



2025 STORE DESIGN HANDBOOK



<http://www.d-e.net/shop>

Phone: 320-235-0852

E-mail: info@d-e.net

V06.25.25



TABLE OF CONTENTS

- D-E: WHO WE ARE, WHAT WE DO & HOW pg. 3
- DELIVERY & LEAD TIME..... pg. 4-6
- SECTION 1000 – GENERAL SPECIFICATIONS pg. 7-15
 - LIGHTING pg. 7
 - TYPICAL LIGHTING LAYOUT
 - ELECTRICAL pg. 7
 - COMPUTER pg. 7
 - NETWORK
 - POWER
 - PAINT pg. 8
 - WIRE GRID pg. 8
 - CARPET FLOORING pg. 8-13
 - CARPET CONSTRUCTION SPECIFICATIONS
 - CARPET NOTES
 - CARPET TILE INSTALLATION
 - CARPET MAINTENANCE & CLEANING
 - COUNTER TOPS pg. 13
 - STORE FIXTURE KEY..... pg. 14-15
- SECTION 2000 – DETAIL DRAWINGS pg. 16-35
 - LOZIER RACKING SYSTEM..... pg. 16
 - WINDOW TREATMENT..... pg. 17-18
 - SURFACE PREPARATION
 - APPLICATION INSTRUCTIONS
 - WALL BLOCKING & FURRING pg. 19
 - COUNTERTOPS & CASHWRAPS..... pg. 20-21
 - SHOE FITTING BENCH..... pg. 22
 - METAL DOUBLE GONDOLA..... pg. 23-24
 - GOLF BALL CENTER pg. 25-27
 - TWO-TIER PUTTER TREE pg. 28-29
 - SINGLE SHOE SHELF FOR UPRIGHTS pg. 30
 - TWO-TIER SHELVES FOR H-RACK..... pg. 31
 - HOCKEY STICK DISPLAYER..... pg. 32
 - K10 4-ASSEMBLY..... pg. 33-35
- SECTION 5000 – FIXTURE ASSEMBLY..... pg. 36-39
 - K41 H-RACK ASSEMBLY pg. 36-37
 - K41 H-RACK END PANEL ASSEMBLY pg. 38-39
 - QR SCAN CODES – YOUTUBE Assembly & Instructional Videos pg. 40

Designed Environments (D-E)

We at Designed Environments are looking forward to partnering with you! We work with you to streamline your opening process by taking care of supplies, fixture and design needs, allowing you the time and energy needed to focus on the success of your business.

D-E is a family-owned company located in Willmar, MN that started in 1986.

It is our job and passion to:

- Find the most efficient and effective store layout for your location and merchandise.
- Match your merchandise to fixture and floor rack needs.
- Provide all of the supplies needed to operate a successful retail location.

We do this by working as a team and partner for your store and stand beside you throughout the process providing you with:

- A Store Designer & Fixture Specialist:
Works with you & your contractor to create your store layout, décor & fixture needs.
- Account Manager:
A real person that stands beside you throughout the opening process & in business to coordinate shipping schedules, confirm delivery, order supplies and troubleshoot as needed. We are your advocate & partner working with you and understanding your business.
- Warehouse & Shipping Department:
D-E has an on-site warehouse that carries fixtures & supply needs for your store. The on-site location allows us to quickly fill orders, physically check stock and our shipping manager works to find your location the most economical shipping option. We also maintain inventory in 6 regional warehouses to save you money on freight costs.

How do we do what we do?

D-E has learned from more than 30 years in business that customer service and quality product are key to the on-going success of your store. We work directly with wholesalers, suppliers and shipping companies from across the nation to find you the best price and highest quality products delivered, in the most economical way, to your door. We put the pieces together providing you a turn key opening and continued operation, saving you time and money.

We look forward to our partnership and appreciate your business.

DELIVERIES

Be sure that you put an “OPENING SOON” poster in your store window soon after you sign your lease. Find out when UPS delivers to your area, meet your UPS drivers and inform them when you are opening. Without this poster, shipments may be returned to the vendor if no one is around to receive them. Extra shipping costs and time delays may be incurred.

When deliveries of certain products are made to your store location, you will be required to have manpower available to unload products from the truck. These products include:

- Wood Equipment (Counters)
- Most Metal Equipment & Shelving (Fixtures)
- Carpet & Flooring
- Slatwall

Important Notes:

- Have adequate help unloading products! We recommend having 4-6 people on hand when shipments arrive. Truck drivers are NOT responsible for the unloading of your freight. If help is not available, a subsequent unloading fee will be incurred.
- **Hang a delivery poster in the window, giving a contact phone number or an optional delivery address!**

DELIVERIES

FREIGHT DAMAGE CAN COST YOU MONEY

Failure to follow these steps may result in refusal of your claim and non-payment for damage or loss.

You have the right and responsibility to inspect your freight before you sign.

You can insist that the driver wait.

1. Inspect the crate/packages for damages/shortages.
2. Inspect the contents for damage.

If damage or shortage is found, you have the obligation to:

1. Specify the damage or shortage found on all copies of the bill of lading receipt—**then sign it –NOT before.**
2. Contact the carrier and Designed Environments as soon as possible.
3. Determine the cost estimate of damages or shortages. The inspector will need to know before they inspect.
4. If the carrier waives the inspection, be sure to note with whom you're speaking and request a copy of the inspection report, showing the waiver.

You may wish to note the following when you have discovered damage or shortage:

1. Delivery Date
2. Carrier
3. Terminal Contact
4. Nature of damage/shortage

We are here to help you with your project.

Your d-e account manager will be in touch with you throughout this project. We encourage your contractors and/or yourself to call 1.800.342.0852 at any time with questions pertaining to your new store.

LEAD TIMES/SHIPPING SCHEDULE

ITEMS	SHIPPED/DELIVER
SLATWALL (REFACING)	Shipped from regional warehouse via truck Lead Time: 3 weeks production + 1 week transit
COVEBASE	Shipped from manufacture via UPS Lead Times: 1 week production + 1 week transit
CARPET	Shipped from D-E via truck Lead Time: 1 week production + 1 week transit
COUNTER TOPS HANGROD & BRACKETS WALL LOGOS	Shipped from D-E via truck Lead time: 3 weeks production + 1 week transit
COUNTERS & ASSOCIATED SUPPLIES	Shipped from the manufacturer via truck Lead Time: 6 weeks production + 1 week transit
FLOOR FIXTURES RACKS GRID SUPPLIES ∂ Tags, Labels, Bags & Hangers	Shipped from D-E via truck Lead Time: 3 weeks production + 1 week transit

Important Notes:

- Lead/Shipping time is based upon the date of when payment is received.
- Once the order is picked up by the freight carrier, d-e has little or no control over the delivery schedules.
- d-e will provide you with all the shipping information, tracking numbers and phone numbers to assist you in tracking your shipments.

To avoid delays, please keep these lead times in mind when planning your orders.

SECTION 1000-GENERAL SPECIFICATIONS

LIGHTING

Proper lighting is critical in your retail store and it should not be compromised in any way. The **Play It Again** store requires:

- 100-foot candles in the selling and back-room areas
- 200-foot candles over the checkout
- T-8, SP35 “Cool White”, color corrected lamps are recommended
- Prismatic Lens (not parabolic lens)

To maintain this level of light, one 2' x 4' three lamp fixture (or 8' two lamp fixture) should be placed every 64 square feet, or 8' center to center. Track lighting may be necessary to highlight specific areas. Refer to your store drawing for a suggested lighting schematic. Please note the lighting schematic provides good general lighting. City codes and current ceiling conditions are not necessarily taken into account. The lighting plan is not intended to be custom targeted lighting for the initial store design. Instead, it is designed for the best overall lighting coverage to flex with racking changes over the years. Be sure to review the layout with your electrician to best adjust lights to avoid potential dark isles.

ELECTRICAL

All stores need duplex outlets 20' around the perimeter of the store.

- A minimum of one outlet is required above the front window for an “OPEN” sign. It will be the franchisee’s choice as to the exact location.
 - At least one 20A dedicated circuit with isolated ground, orange in color, is required for the point of sale for the computer systems.
 - Up to three duplex outlets are required to be installed at cabinet locations. *See “Cabinet Elevation” for details and exact P.O.S. locations.*
 - One phone jack on a 3-wire line is required at each cabinet location. *See “Plan-View at Checkout” for details and exact locations*
 - Be sure to contact your exterior sign vendor to check if you need additional electrical!
- *** Local codes should always be considered first and foremost! *****

COMPUTER

NETWORK CABLE:

Enclose as much of the cable as possible in PVC pipe to protect it from wear. If network cable gets stepped on, wet or kinked, there is a very good possibility it will not work. Do not run the cable through the same conduit as electrical or telephone wire. This could cause interference in the computer network. If the cable needs to be run across the ceiling, keep the cable at least 6 feet from fluorescent lights. If you must cross fluorescent lights, do so at a 90-degree angle.

POWER:

The computer outlet should be a dedicated 20A circuit with isolated ground, orange in color, to distinguish it from the others. If you have a computer in an office or other workstation away from your main P.O.S. counter, they should be on the same circuit.

WARNING: Failure to follow this procedure may void your warranty.

SECTION 1000-GENERAL SPECIFICATIONS

PAINT

Paint can be purchased at any Sherwin Williams Store. When buying paint ask for the “Winmark Corporation Account” and then “Play It Again Sports”.

Perimeter wall colors in the retail area include:

- **Repose Gray** **Non-P.O.S. Walls** **SW7015** **Semi-Gloss Finish**
- **Dovetail Gray** **P.O.S. Wall** **SW7018** **Semi-Gloss Finish**
- **Humorous Green** **Directly Behind P.O.S.** **SW6918** **Semi-Gloss Finish**
- **Refer to your “F2” Wall Elevations drawing for the exact locations.**

For stores w/open ceilings, all of the area above the wall, deck joists, conduit, ducts, etc. can be painted either of the following colors:

- **Pure White** **SW7005** **Flat Finish**
- **Repose Gray** **SW7015** **Flat Finish**
- **Tricorn Black** **SW6258** **Flat Finish**

All interior doors, door jambs & trim can be painted either of the following colors:

- **Repose Gray** **SW7015** **Flat Finish**
- **Tricorn Black** **SW6258** **Flat Finish**

WIRE GRID

Wire grid panels, for use in the Play It Again Sports stores should be 3-inch center to center squares of powder coated black grid.

All 2' x 4', 2' x 5', 2' x 6', 2' x 7' and 4' x 4' wire grid panels are to have double wire at long.

CARPET

The carpet for your new store is a patterned commercial carpet. Therefore, special consideration must be given when choosing a carpet installer. The carpet mill will not honor claims for carpet installed by non-certified installers.

Installation Qualifications: Patterned Carpet Installation should be accomplished by a Floor Covering Installation Board (FCIB) certified firm or an installer who can demonstrate compliance with the FCIB certification program. Call 800-882-8846 for verification or certification. Another option is to visit www.cfiinstallers.com Other valid certifications are Floor Covering Installation Contractors Association (FCICA) and the International Certified Floor Covering Installers Association (CFI). The installer must meet or exceed C-1 or C-2 classification.

SECTION 1000-GENERAL SPECIFICATIONS

CARPET CONSTRUCTION SPECIFICATIONS

STYLE.....	STAR TREK 02-B
CONSTRUCTION.....	Multi-Level Loop
FIBER	100% Polypropylene
GAUGE.....	1/10"
STITCHES	10 per inch
PILE HEIGHT	16 oz/yd sq
AVERAGE PILE HEIGHT	3MM +/- 0.5MM
BACKING	BITUMEN
TILE SIZE.....	19.69" X 19.69" (50cm X 50cm)
CARTON QUANTITY.....	5.98 sq. yd (5sqm)
CARTON WEIGHT.....	37.48 lbs. (18.5 kg)
APPROVED INSTALLATION.....	MONOLITHIC - 1/4 TURN - BRICK

CARPET NOTES:

- Every effort is made to ensure that each box shipped meets the highest standards of workmanship and quality. Specifications are derived from averages resulting from normal manufacturing tolerances in yarn, fiber, temperature and humidity, and may vary within normal industry tolerances. Performance is not affected by such variances. Variance may be up to five percent, plus or minus. Quality control tests to accept or reject goods must be performed prior to cutting and installation. No claims for out-of-tolerance material will be accepted after the goods are cut and installed. We reserve the right to change the primary or secondary backing on this carpet without notice where performance is not affected. Due to yarn variations, actual merchandise not guaranteed to exactly color match the sample.
- No claims will be honored if carpet is installed with visible defects.
- **D-E does NOT supply glue** for the carpet. Installers must purchase glue locally or online.
 - Below are 4 recommended adhesives
 - Taylor 2098-Dynamic
 - Dri-Tac ECO-5500
 - AAT-420
 - AAT-520
- Read all instructions prior to beginning any installation.

SECTION 1000-GENERAL SPECIFICATIONS

CARPET TILE INSTALLATION INSTRUCTIONS:

Failure to follow these guidelines for installation may void of Product Warranty. Any variance from any of the following instructions will become the responsibility of the installer and not the manufacturer, and shall void all otherwise applicable warranties.

1. Site Conditions

Carpet Tiles are not intended for installation on walls or wet surfaces. We recommend the following conditions before installation: The best environment in which the carpet is to be installed is the temperature between 65° F and 95° F (18° C and 35° C) and the relative humidity between 10% and 65%. A pH range of 5-9 is satisfactory.

2. Floor Preparation

Carpet must be installed over properly prepared substrates. All cracks, holes and flooring irregularities must be adequately repaired to ensure a smooth, finished appearance and prevent accelerated wear.

3. Check the Carpet Before Installation

All Carpet Tiles should be inspected carefully for dye lot, pattern, quality and other damage during the shipping before installation. Contact with your dealer immediately when finding some defects. Labels on each carton contain important information including: product name, weight. Do not install any product that has visible problems, otherwise that would void of the Product Warranty. The manufacturer will not be responsible for workmanship or problems due to improper installation. Carpet Tiles must be adequately protected from soil, dust, moisture and other contaminants and stored on a flat surface; however, the number should be no more than 5 cartons for a long period if overlapped. In the event of any shading or dyelot problem, please do not install the tiles and inform your local distributor immediately.

4. Tools and Supplies Checklist

Scissors; Tape Measures; Straight Edge; Marking Pen; Vacuum Cleaner; Trowel, pH Test Paper; Calcium Chloride Moisture Test.

5. Adhesives

Any uneven surface that cannot be leveled may require adhesive or double-sided tape to hold a tile in place. Recommend to use solvent environment-friendly glue.

Caution: To protect your hands, always wear heavy work gloves when handling tackless strips and other tools and materials.

6. Cutting Carpet Tiles

Always cut tiles from the back. Using one tile as a reference tile, score a line on the back of the tile that is to be cut. Cut the tile along the reference line, being careful not to cut through the installed tile below it. Always secure cut or partial tiles with releasable adhesive or double-sided tape. The square of the cut carpet should not less than half of the square of common carpet tile. Otherwise, it is not easy to secure it.

7. Floor Layout

Make a diagram with exact measurements of the area(s) where carpet will be installed. It is wise to always locate the seams in the areas of lightest traffic. Indicate all windows, doors, furniture, and unusual angles. Divide the room into four quadrants and snap a chalk line. Make sure quadrants meet at right angles. Use the 3-4-5 triangle method to make sure the first line is perpendicular to the second line. Check the distance from each centerline to its parallel wall and determine how many tiles will be required (Fig. 1).

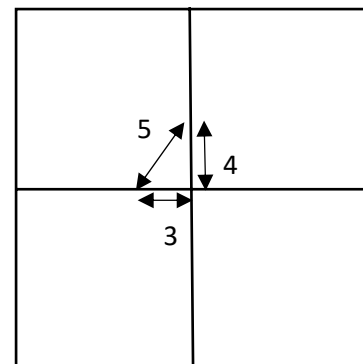


Fig. 1

SECTION 1000-GENERAL SPECIFICATIONS

CARPET TILE INSTALLATION INSTRUCTIONS CONT.:

8. Carpet Installation

Tiles are printed on the back with arrows showing pile direction. Start from the intersection point in the center of the floor. Install the tiles in one quadrant using the chalk lines as guidelines. Fill in the area between the two chalk lines using the stair step method. Continue to install tiles in a stair step or pyramid pattern, starting at the center point. Check to make sure the tiles are properly aligned at edges during the installation. Fit the tiles tightly together by sliding them together and press into the adhesive (Fig. 2).

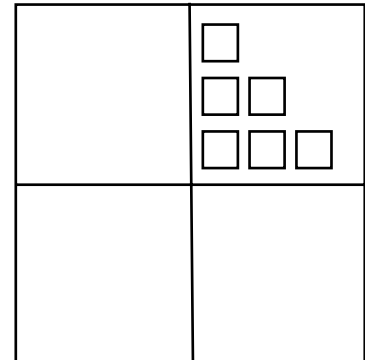


Fig. 2

Refer to the installation instruction in each box of carpet.

9. Carpet on Electrical Lines

Mark locations with a piece of tape on tiles installed over electrical boxes and electrical floor. Tiles can be lifted for cut-outs later.

10. Repair After Carpet Tile's Installation

Check the whole effect after the installation, if there are any seams among tiles, change them if possible. As for the fluff, use the scissors to repair accordingly.

11. Replacement of Damaged Tiles

In order to minimize visual differences between new and old tiles, consider replacing damaged tiles with tiles removed from less visible areas. Use stock tiles to replace those removed from less visible areas

SECTION 1000-GENERAL SPECIFICATIONS

POLYPROPYLENE CARPET TILE WARRANTY:

Bella Flooring GROUP will repair or replace the portion of the carpet that does not perform according to our warranties. If all warranty conditions have been met, proportional purchase price of the carpet will be compensated for the directly affected area. Any charges for carpet installation, disposal, new padding or moving furniture, equipment, etc. are not the responsibility of us.

The following prorated schedule shall be applied:

Lifetime Warranty Proration Chart

1st Year 100%	2nd Year 90%	3rd Year 80%	4th Year 70%
5th Year 60%	6th Year 50%	7th Year 45%	8th Year 40%
9th Year 35%	10th Year 30%	11th Year 25%	12th Year 20%
13th Year 15%	14th Year 13%	15th Year 10%	16th Year 8%
17th Year 6%	18th Year 4%	19th Year 4%	20+ Years 3%

Installation

The carpet must be installed in accordance with the Carpet & Rug Institute's Carpet Installation Standard.

(See www.carpet-rug.org)

Maintenance

The consumer shall maintain the carpet in accordance with Carpet & Rug Institute's Carpet Maintenance Guidelines for Commercial Applications.

Commercial Wear Warranty

We warrant that this carpet will not wear (loose surface pile) more than 10% following installation of the carpet, provided that the carpet is properly installed and maintained indoors. This warranty excludes carpet installed on stairs, areas subject to inappropriate chair casters, damage from skates, spiked shoes and sharp objects, and abuse including damage from athletic shoes and abnormal activity. Water damage, willful damage including burns, tears and cuts, and the effects of improper installation and maintenance are also all excluded from this warranty. This warranty covers abrasive wear (loss of pile). Changes in appearance caused by soiling, crushing (matting) or pooling are excluded from warranty coverage.

Comprehensive Stain Warranty – No Exclusions

We warrant that this carpet will not permanently stain from substances typically found in homes or offices during the listed warranty years following installation of the carpet, provided that the carpet is properly installed and maintained indoors according to CRI recommendations. A stain is defined as an irreversible localized colour change rated less than 3.0 on the AATCC Gray Scale for Evaluating Staining (1.0 = more change; 5.0 = less change). This warranty excludes willful damage including burns, water damage and reappearing (wicking) spots, and any stain that may occur in high traffic areas such as stairs. In addition, substances that degrade or destroy the carpet fibers (i.e. drain cleaner, battery acid, etc.) are also excluded from warranty coverage. This warranty is not a cleaning contract. The consumer must establish and implement a pre-planned preventative maintenance program immediately after installation of the carpet. Claims submitted to us under this warranty must include a letter and a receipt from a professional carpet cleaner describing the affected area and the cleaning procedures applied, with a statement that the stain could not be removed. If after professional cleaning, the stain is tested and the affected area is found to have a rating of less than 3.0 on the AATCC Gray Scale for Evaluating Change in Colour, we will designate a professional carpet cleaner to attempt to remove the stain. If the second professional cleaning removes the stain, the consumer must pay for this service. If we determine that the affected area remains unsatisfactory, and that all warranty conditions have been met, we will compensate the owner on a pro rata basis.

Backing Performance

We warrant that this carpet tile will not lose dimensional stability (i.e. shrink, grow, cup or dome), delaminate from face fiber or unravel at the edges when properly installed indoors according to installation recommendations. This warranty excludes carpet installed on stairs, areas subject to inappropriate chair casters, damage from skates, spiked shoes and sharp objects, and abuse including damage from athletic shoes and abnormal activity. Water damage, willful damage including burns, tears and cuts, and the effects of improper installation and maintenance are also all excluded from this warranty. If after inspection and/or testing of the carpet, we determine that the carpet tile backing has not performed as per the warranty description and that all warranty conditions have been met, we will compensate the owner on a pro rata basis.

SECTION 1000-GENERAL SPECIFICATIONS

CARPET MAINTENANCE & CLEANING

VACUUMING EQUIPMENT

The manufacturer recommends an upright heavy-duty commercial vacuum with a “Beat and Sweep” beater bar. The Pile Height Level Setting, the amount of suction, the beater bar and the vacuum bag should be checked periodically to insure that the vacuum is performing properly.

VACUUMING FREQUENCY

Heavy traffic areas, walk off areas and pivot areas should be vacuumed as needed, or at least daily. Moderate traffic areas can be vacuumed every other day.

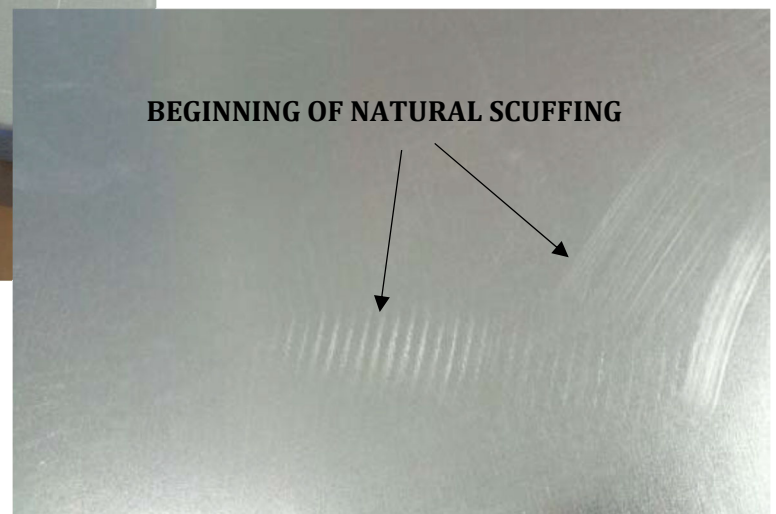
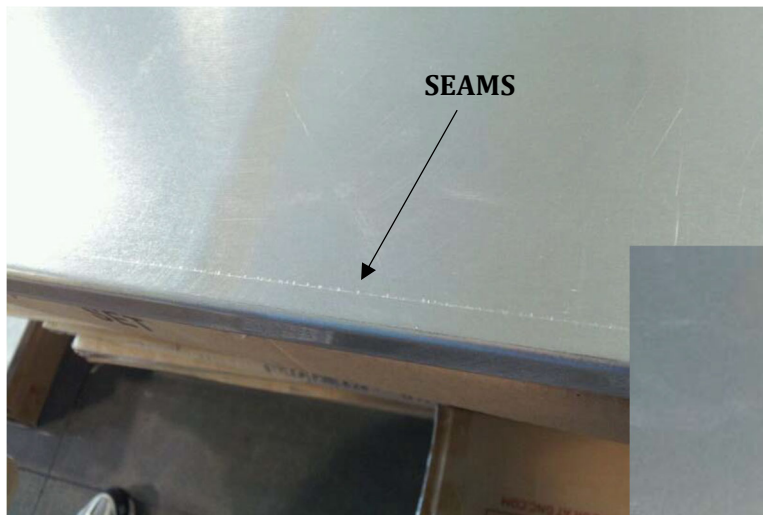
COUNTERTOPS

Countertops are made of stainless steel with a particle board backing. Tops are chosen because of durability and appearance.

When tops arrive, they will be smooth, however as the tops get use this will create a seasoned look. Scratches and wear are expected.

Use of the countertop is encouraged to buff the surface and build consistency for a “worn in” look.



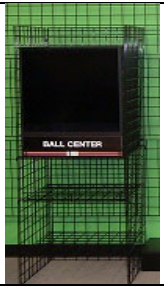
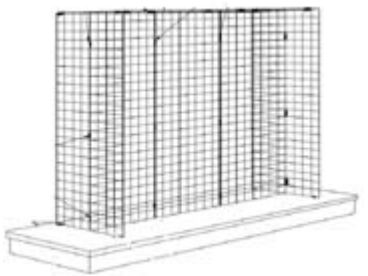
Please see pictures below showing what to expect when tops arrive and after usage:



SECTION 1000-GENERAL SPECIFICATIONS

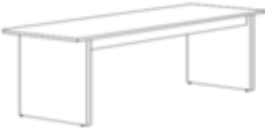

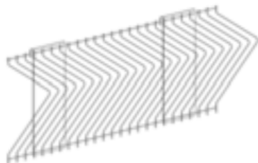

STORE FIXTURE KEY: CORRESPONDS WITH YOUR STORE SPECIFIC DRAWING

Refer to the PDF drawing labeled "Fixture Plan" sent via e-mail for your specific store's fixture locations

10	<p>4-WAY RACK</p>	140K-10	
77	<p>H-RACK</p> <ul style="list-style-type: none"> • 4- CASTER FOR RACK 	<p>140K41</p> <ul style="list-style-type: none"> • 140CTM60 	
11	<p>BALL CENTER</p> <ul style="list-style-type: none"> • 3-2X6 BLACK GRID • 3-BLACK GRID SHELVES • 6- GRID CONNECTORS 	<ul style="list-style-type: none"> • 130BLK-26 • 130BLKS-95 • 130BLK-JC 	
376	<p>METAL GONDOLA W/WOODEN BASE</p> <ul style="list-style-type: none"> • 6-2X6 BLACK GRID • 16-BLACK GRID CONNECTORS • 16-BLACK JC CONNECTORS <li style="padding-left: 40px;">10-JC CONN W/SCREWS <li style="padding-left: 40px;">6-JC CONN W/BOLTS 	<ul style="list-style-type: none"> • 130BLK-26 • 130BLK-JC • 130BLK-JC <li style="padding-left: 40px;">130BLK-JC-SCREW <li style="padding-left: 40px;">130BLK-JC-BOLT 	
149	<p>30" x 84" x 6" PORTABLE BLACK GONDOLA BASE</p>	<ul style="list-style-type: none"> • 160-PIAS-0149BLK 	

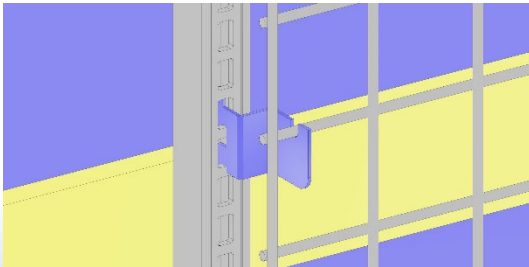
SECTION 1000-GENERAL SPECIFICATIONS

STORE FIXTURE KEY CONT.

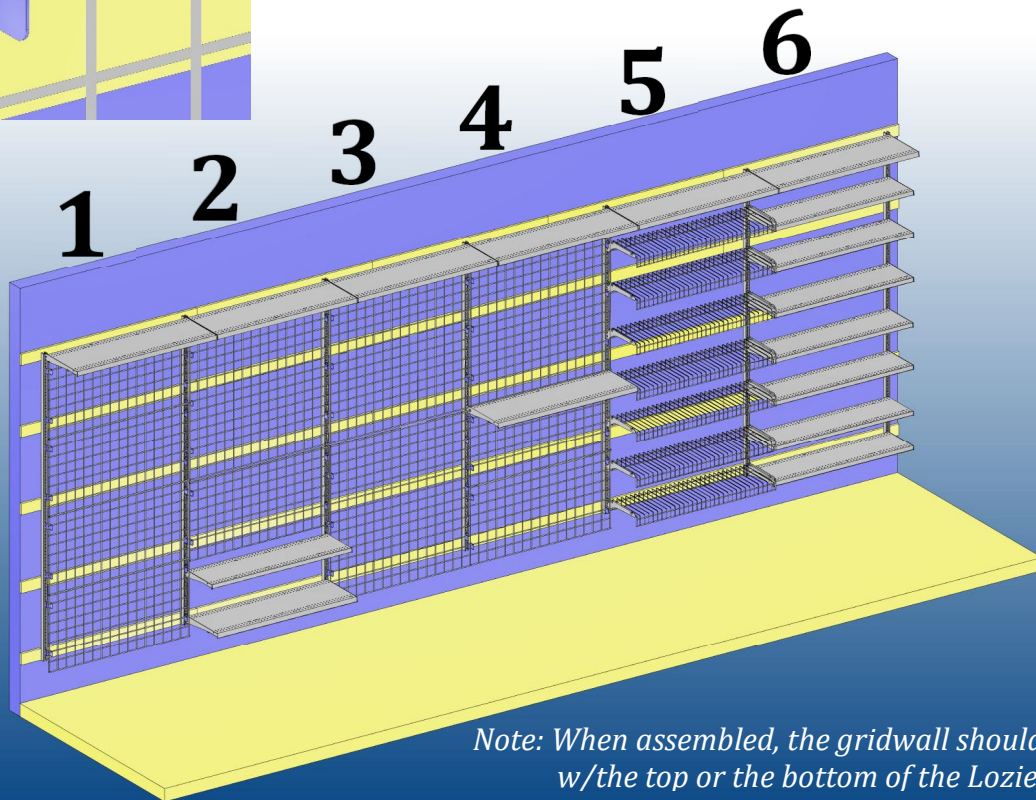
28	SHOE FITTING BENCH	160-PIAS-0128BLK 
39 & 40	PUTTER TREE TOP & BOTTOM	160DE- PUTTERTREE 
41	HOCKEY STICK DISPLAYER	11024HOCKSTICK 
SS	"T" STYLE 8 SHELF SHOE MERCHANDISER	140K-48 

SECTION 2000-DETAIL DRAWINGS

LOZIER RACKING SYSTEM FOR THE PERIMETER OF THE STORE



**15" Spacing from the top of the bracket to the top of the next bracket. **



Note: When assembled, the gridwall should not be level w/the top or the bottom of the Lozier Wall Mounts

- 7 - 96" LOZIER WALL MOUNTS
- 26 - GRID BRACKETS

- *EACH 2X4 PIECE OF GRID REQUIRES 2 PAIRS OF GRID BRACKETS
- *EACH 4X4 PIECE OF GRID REQUIRES 3 PAIRS OF GRID BRACKETS

<p>COLUMN 1:</p> <ul style="list-style-type: none"> • 4 - 2X4 GRID #DE-BLK24 • 1 - 16X48 SHELF #1648BLK 	<p>COLUMN 3:</p> <ul style="list-style-type: none"> • 2 - 4X4 GRID #DE-BLK44 • 1 - 16X48 SHELF #1648BLK 	<p>COLUMN 5:</p> <ul style="list-style-type: none"> • 7 - SKATE SHELVES • 7pr - SKATE SHELF BRACKETS • 1 - 16X48 SHELF #1648BLK
<p>COLUMN 2:</p> <ul style="list-style-type: none"> • 1 - 4X4 GRID #DE-BLK44 • 1 - 2X4 GRID #DE-BLK24 • 1 - 16X48 SHELF #1648BLK • 2 - 12X48 SHELF #1248BLK 	<p>COLUMN 4:</p> <ul style="list-style-type: none"> • 2 - 2X4 GRID #DE-BLK24 • 1 - 4X4 GRID #DE-BLK44 • 1 - 16X48 SHELF #1648BLK • 1 - 12X48 SHELF #1248BLK 	<p>COLUMN 6:</p> <ul style="list-style-type: none"> • 1 - 16X48 SHELF #1648BLK • 7 - 12X48 SHELF #1248BLK

SECTION 2000-DETAIL DRAWINGS

WINDOW TREATMENT

NOTE: READ THROUGH ALL INSTRUCTIONS COMPLETELY BEFORE ATTEMPTING TO APPLY THE VINYL GRAPHICS.

ALL VINYL IS TO BE APPLIED TO THE OUTSIDE OF THE STORE WINDOWS.

SURFACE PREPARATION FOR WINDOW TREATMENT

1. All surfaces should be considered dirty and cleaned prior to the application of all vinyl.
2. Mark the outside or inside (depending on location specifications) of the window with a level line at the heights specified. (i.e. chalk line)

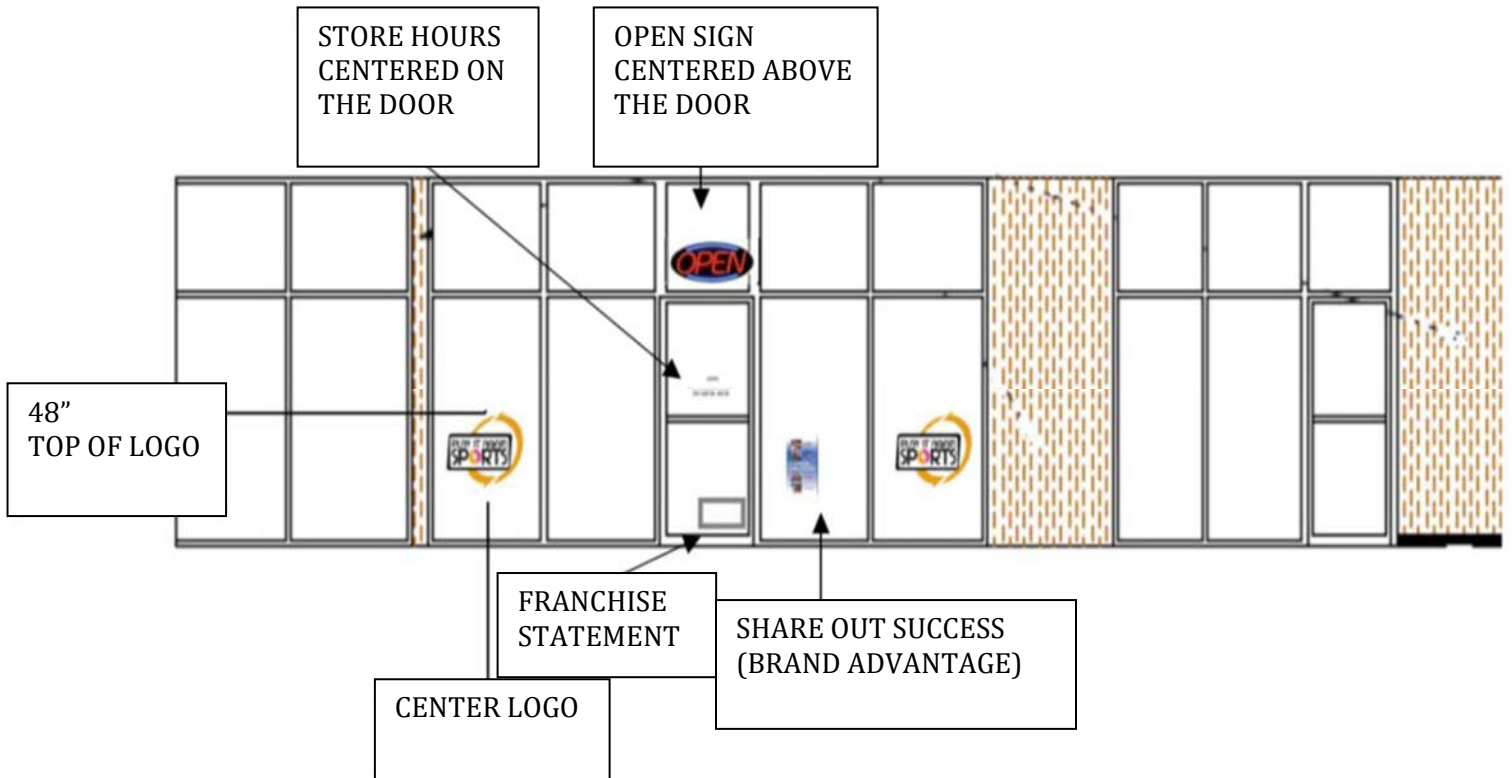
APPLICATION INSTRUCTIONS FOR WINDOW TREATMENT & INTERIOR DOOR TREATMENTS

1. Use 1" to 2" strips of masking tape to position in proper registry.
2. Apply horizontal tape hinge to the top of the marking.
3. In a spray bottle, mix together two drops of liquid dish detergent with approximately two cups of water.
4. Liberally spray application surface of the glass.
5. Remove the liner entirely and allow carrier paper with logo or text to drape flat against the glass.
6. Liberally spray the backside of the vinyl with the soap mixture.
7. Squeegee entire marking to expel excess moisture and air pockets.
Check on the front side of the application to see if any bubbles remain.
8. Let this dry overnight. Do not re-wet the application before removing the pre-mask.
In the morning, pull the pre-mask back on itself at 180 degrees.

**SMALL AIR BUBBLES WILL ABSORB AND THERE IS NO NEED TO BE CONCERNED ABOUT THEM.
IF LARGE BUBBLES APPEAR, THEY SHOULD BE PRICKED WITH A PIN AND HAVE THE AIR PRESSED**

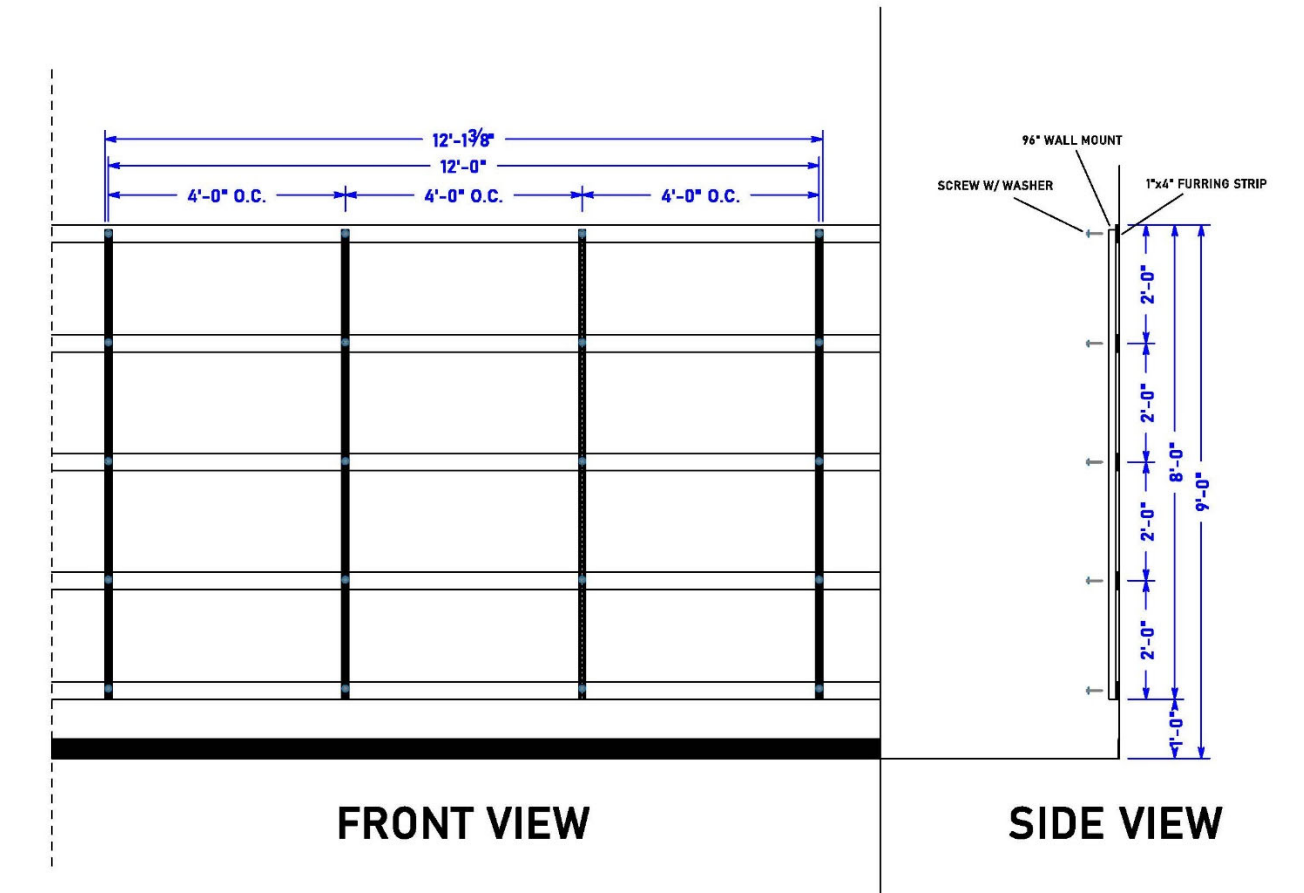
SECTION 2000-DETAIL DRAWINGS

WINDOW TREATMENT SPECIFICATIONS



SECTION 2000-DETAIL DRAWINGS

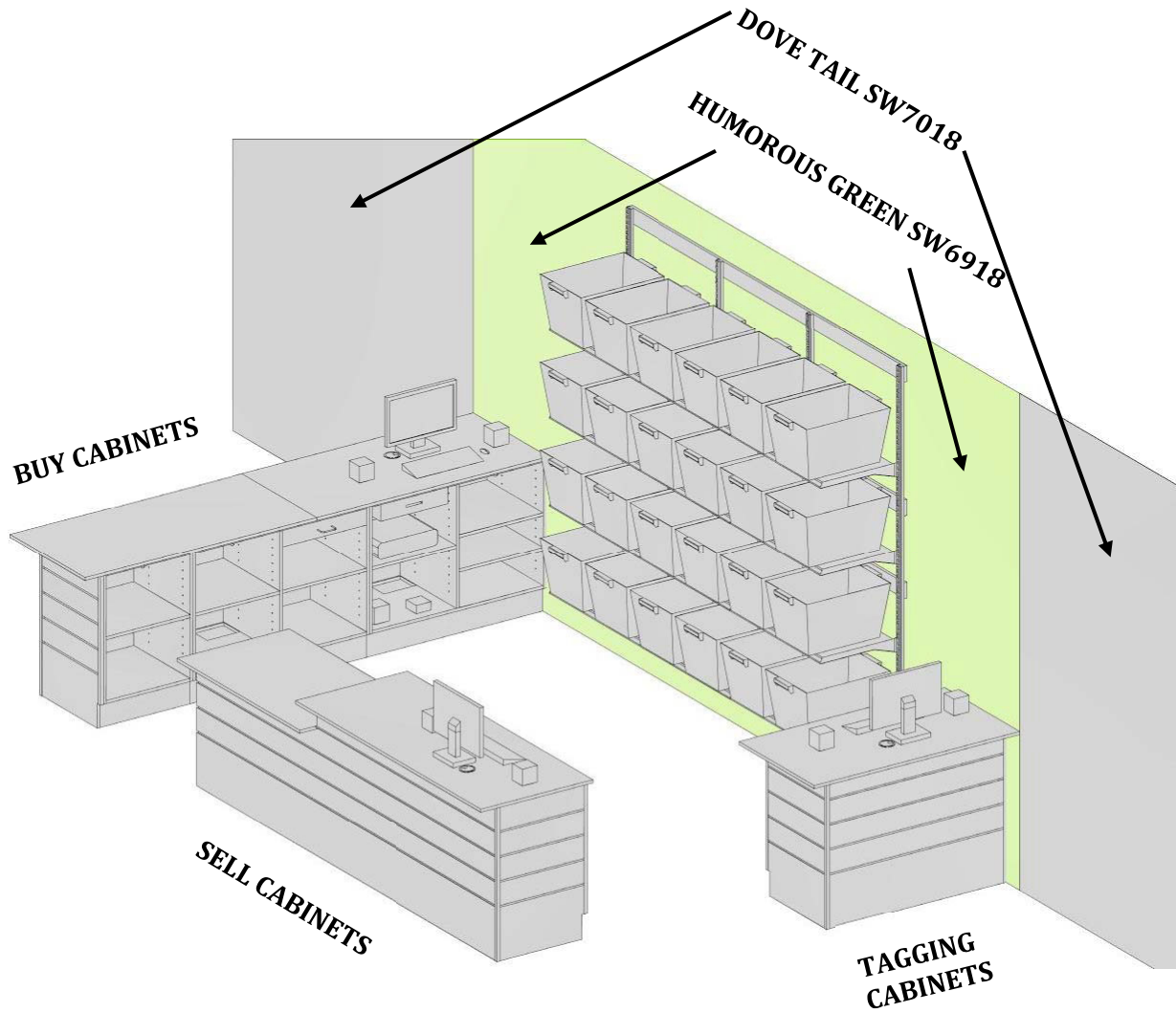
WALL BLOCKING & FURRING



1' x 4' FURRING STRIPS CONTINUOUS, THROUGHOUT THE SALES FLOOR. PAINTED TO MATCH THE WALL COLOR.

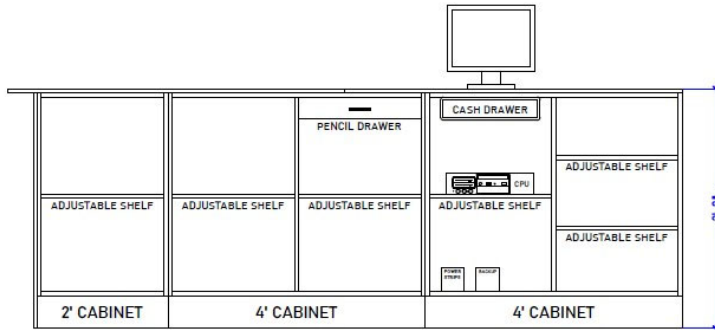
SECTION 2000-DETAIL DRAWINGS

COUNTERTOPS & CASHWRAP

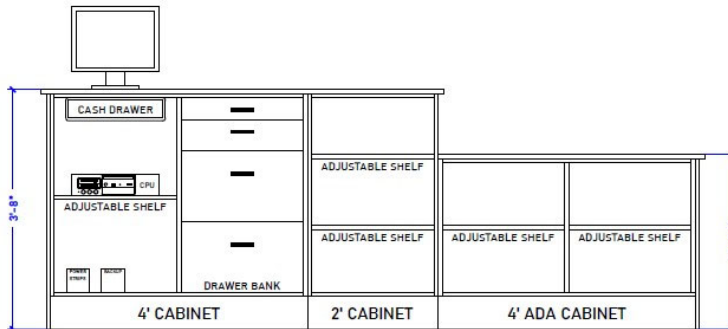


SECTION 2000-DETAIL DRAWINGS

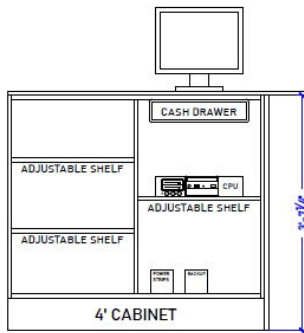
CABINET ELEVATIONS DRAWING



BUY COUNTER



SELL COUNTER

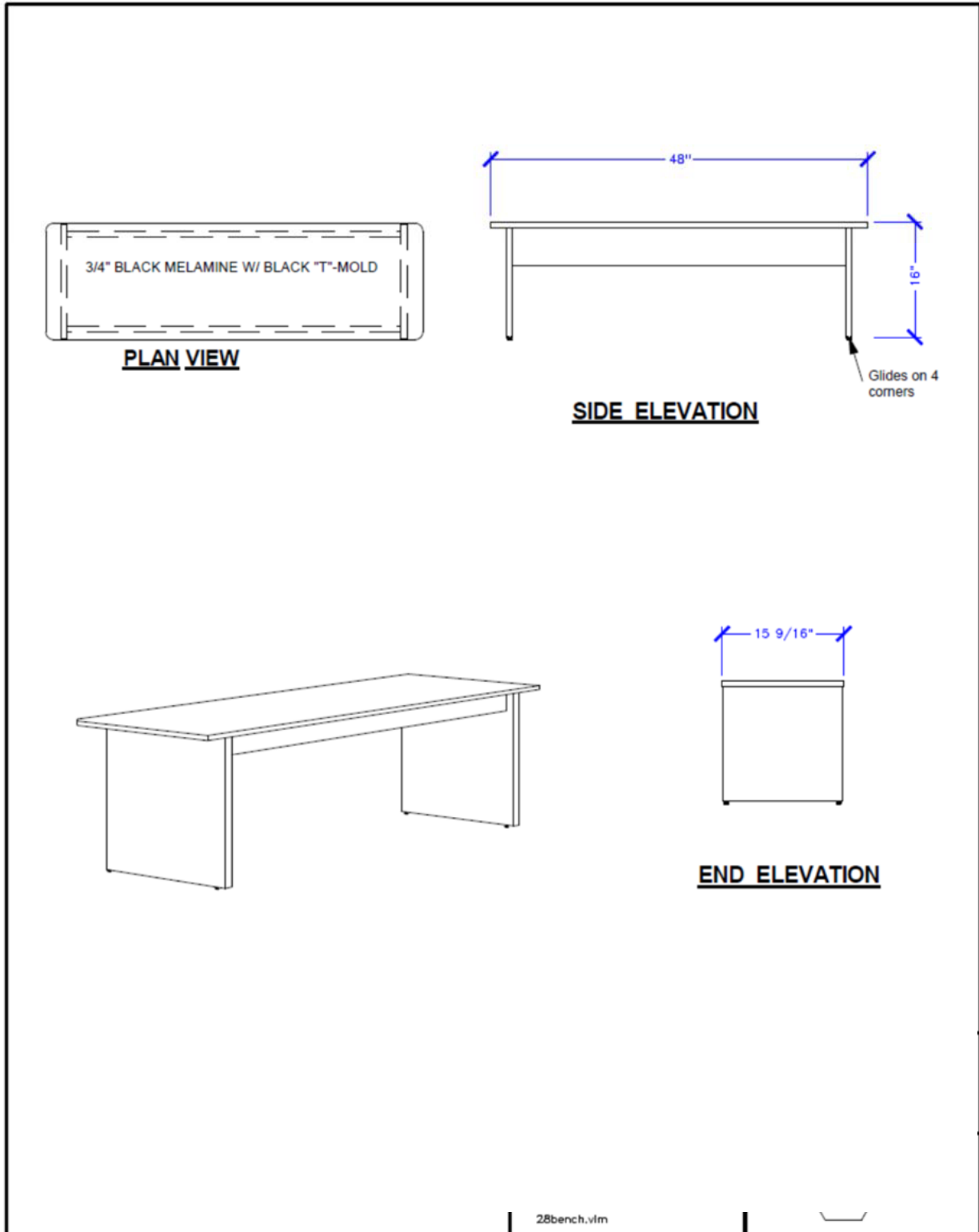


TAGGING COUNTER

THIS IS A TYPICAL GENERIC LAYOUT. REFER TO YOUR SPECIFIC STORE DRAWINGS FOR EXACT CABINET AND PAINT LOCATIONS.

SECTION 2000-DETAIL DRAWINGS

- **SHOE FITTING BENCH (28)**



SECTION 2000-DETAIL DRAWINGS

METAL DOUBLE GONDOLA (376)

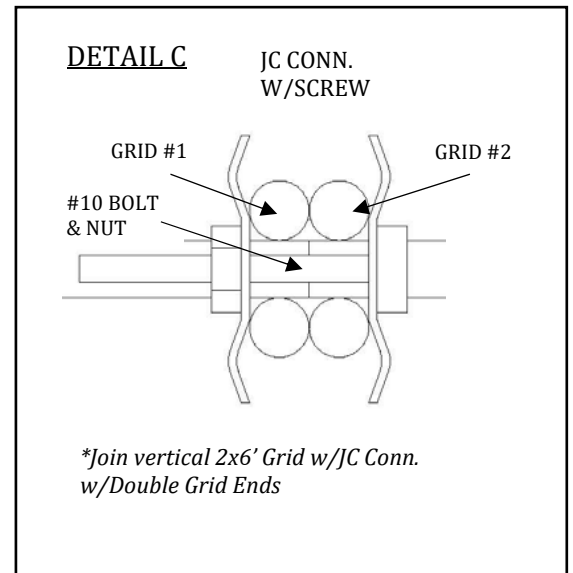
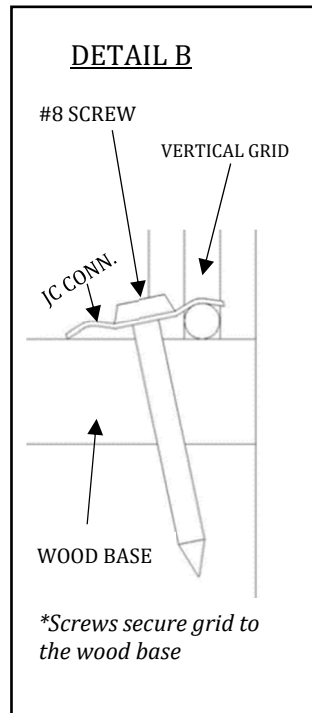
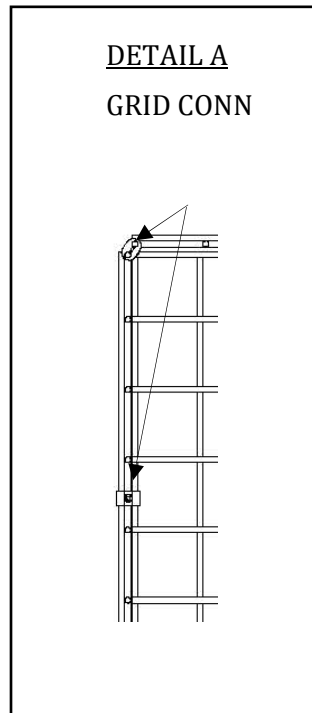
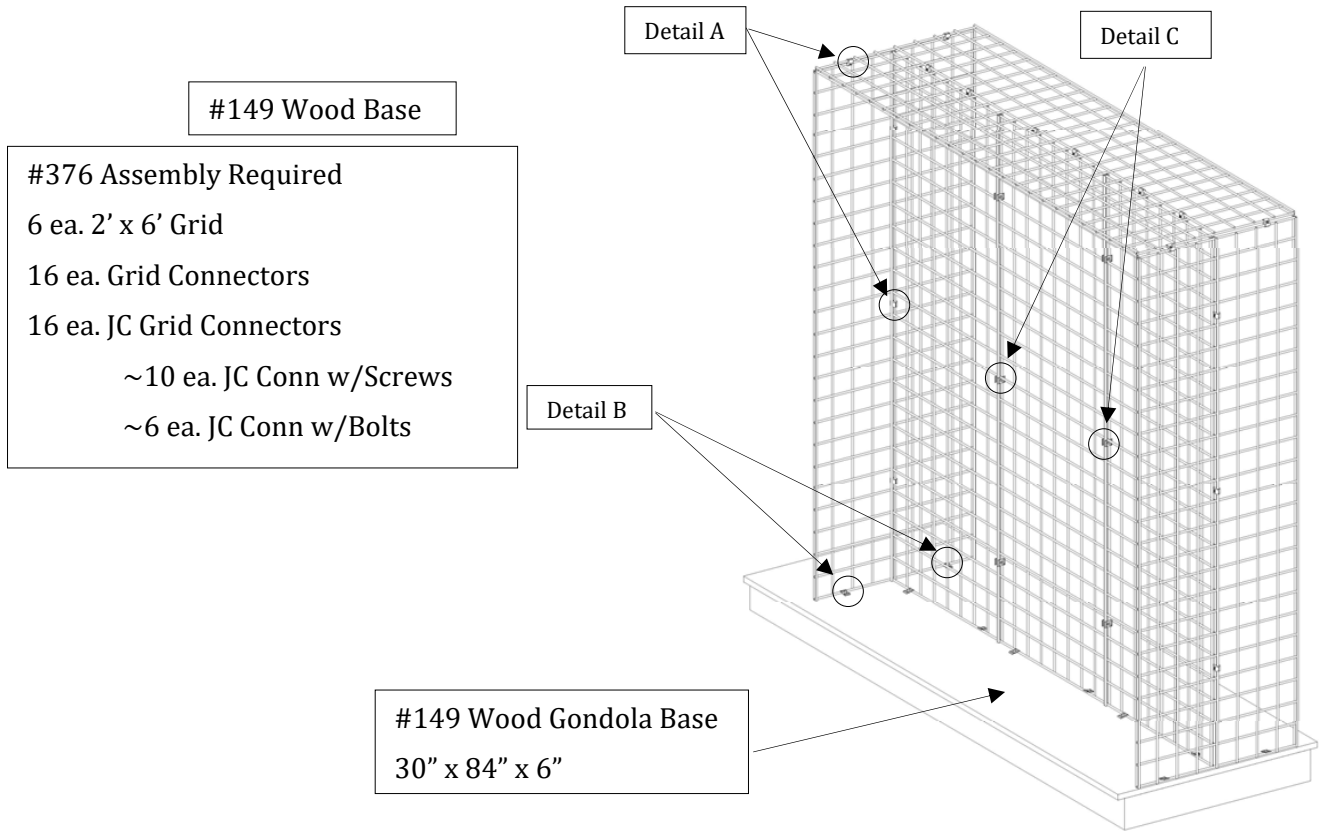
Start With:

- 2-PEOPLE (AT LEAST)
- 1 - #149 WOOD BASE (7' x 30")
- 6 -2' X 6' BLACK GRID
- 16 -GRID CONNECTORS
- 16 -JC GRID CONNECTORS
 - ~10 EA. JC CONN W/SCREWS
 - ~6 EA. JC CONN W/BOLT

1. Lay three 2' x 6' grid side by side on the floor with the long sides butted up to each other.
2. Connect these grid panels together using 3 of the JC connectors on each seam. Remove the screw from these connectors and set aside, you will not be reusing these screws. You will need to use the #10 bolts for these connections. See following page (Detail C).
3. Stand the three connected grid upright. Have a helper hold them in place while you center another 2' x 6' grid panel upright at right angles to the end of the assembly, forming a "T" shaped structure. Be sure the horizontal wires of the grid are on the inside. Connect this grid with 3 of the grid connectors. See following page (Detail A).
4. Repeat Step 3 on the other side of your grid assembly, forming an "I" shape. Again, make sure the horizontal wires of the grid are on the inside. See following page (Detail A),
5. Place the last 2' x 6' grid across the top of the unit. Make sure the shorter 2' wires are facing down. See following page (Detail A). Using 2 of the grid connectors in the top, secure the top grid in place, making sure that the horizontal wire of the grid is facing down.
6. Lift the entire unit onto the #149 wood base. The center 3 grid panels should be centered from each side. The 2 end grid panels should be centered from the edge of the wood base as well.
7. Find the 10 remaining JC connectors, remove and set aside the screws. You will use the 10 halves of the connectors and 10 of the #10 x 1" wood screws to attach the grid assembly to the wood base. See following page (Detail B). Place 2 secure points at the base of each grid panel.

SECTION 2000-DETAIL DRAWINGS

METAL DOUBLE GONDOLA DRAWING (376/149)



SECTION 2000-DETAIL DRAWINGS

GOLF BALL CENTER (11)

Wooden golf ball center holds up to 800 balls. The display can also accommodate baseballs & softballs. Additional display is available below the Golf Ball Center as well. Consider placing extra shelving to display new golf balls, etc. (Grid Shelf ships from DE) 4" Grid Hooks recommended for additional display on outside of unit for clubs or other items.

This is available in black only.

Start With:

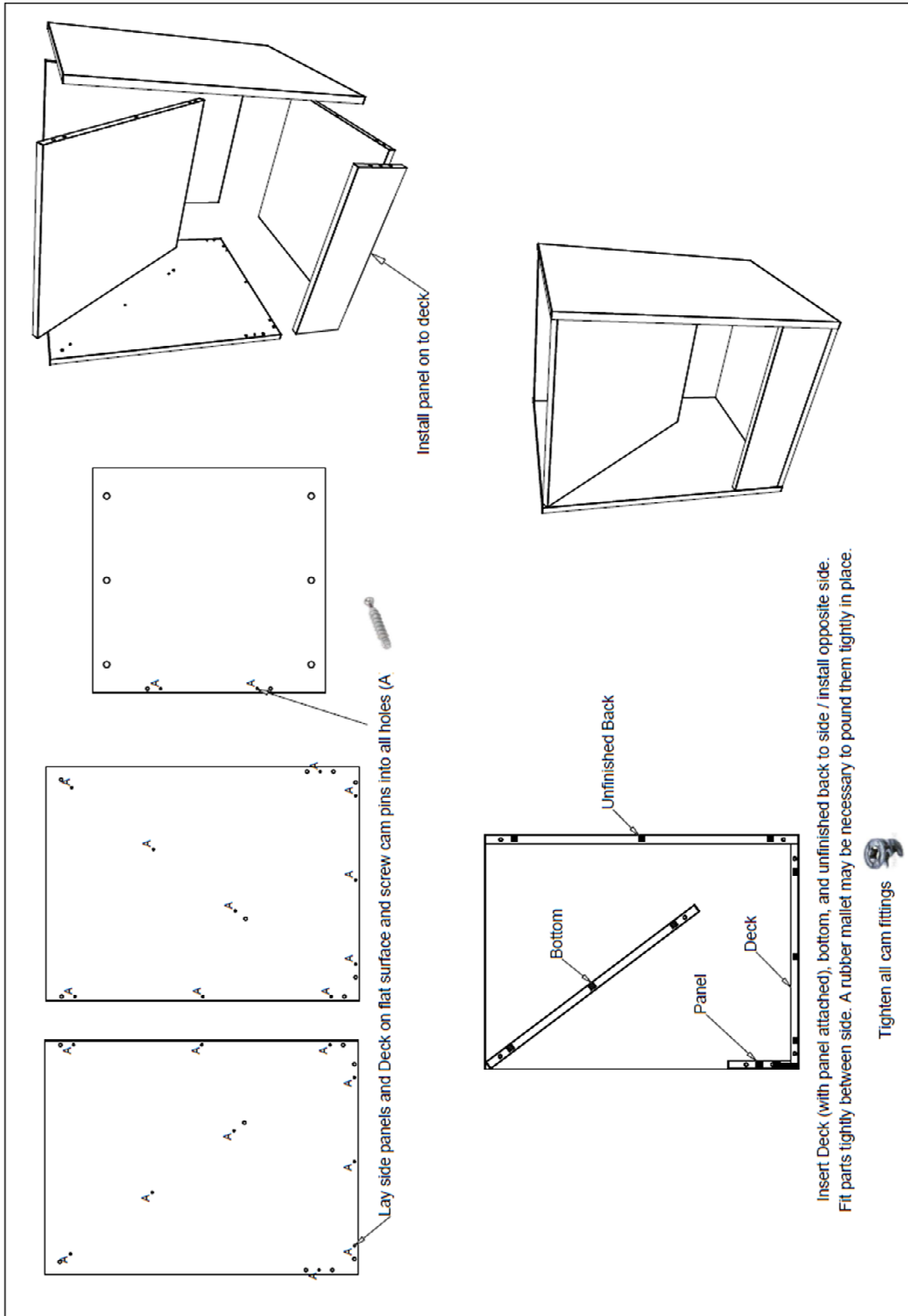
- 3- 2'X6' GRID PANELS
- 6- GRID CONNECTORS
- 3- 2'X2' GRID SHELF

GOLF BALL CENTER DISPLAY

1. Connect the three 2'x6' grid panels using 6 connectors: connect at top, middle and bottom
2. Place the 2x2 grid shelf 12 squares down from the top.
3. Place the display in the grid shelf.

SECTION 2000-DETAIL DRAWINGS

GOLF BALL CENTER DRAWING



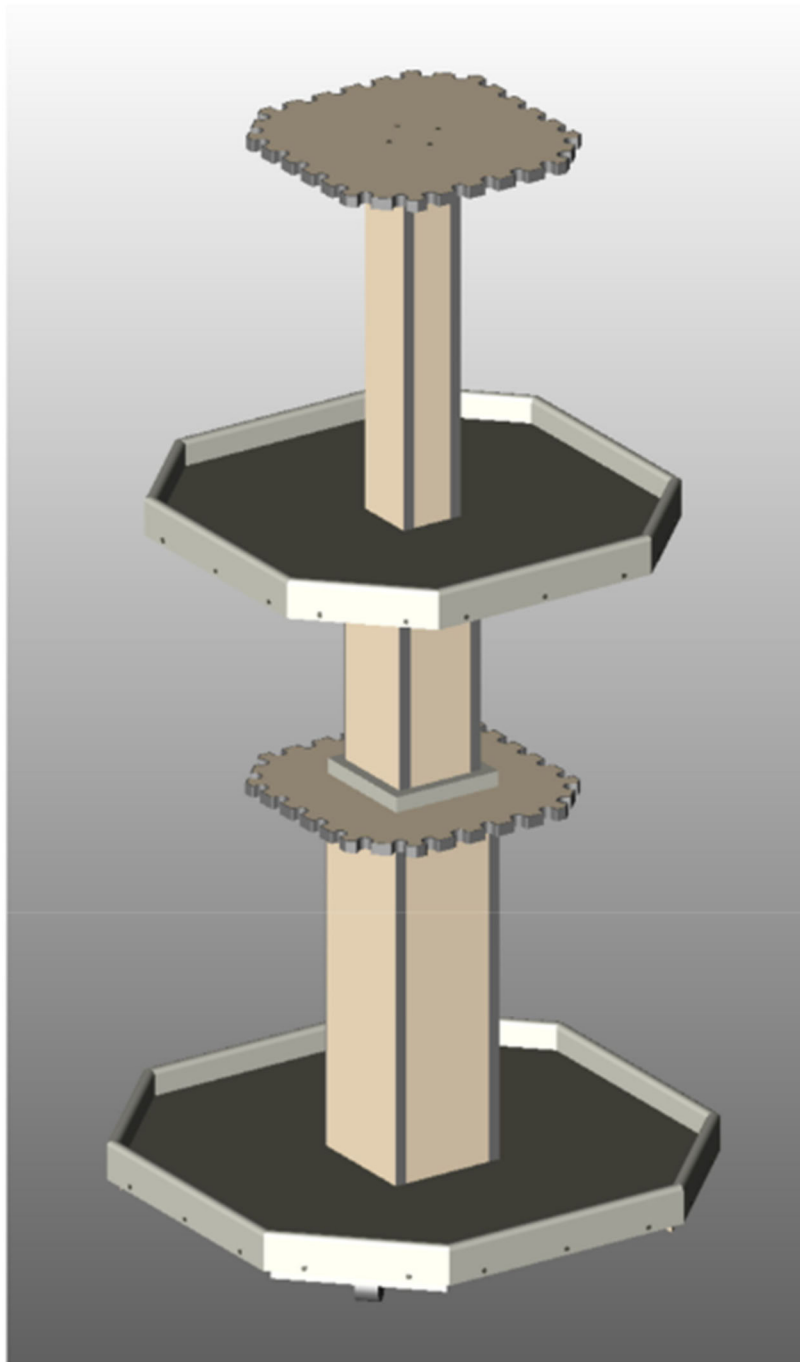
DESIGNED ENVIRONMENTS
PIAS-0152
GOLFBALL DISPLAY

SECTION 2000-DETAIL DRAWINGS

GOLF BALL CENTER



SECTION 2000-DETAIL DRAWINGS



Two Tier Putter Tree

SECTION 2000-DETAIL DRAWINGS

~SEE DETAILED ASSEMBLY INSTRUCTIONS INCLUDED WITH PRODUCT

TWO TIER PUTTER TREE

Holds 56 putters.

Lower Tier includes:

- ∂ 4 Casters
- ∂ Tube C (largest of the 3)
- ∂ Lower Base (larger of the 2)
- ∂ Lower Handle Rest
- ∂ Hardware Kit
 - 8-1/4"-20 Hex Nuts
 - 8-1-1/4" Washers
 - 18-#8 1-5/8" Screws
 - 8-#6 1-1/4" Screws
 - 16-1" Pan Head Screws

Upper Tier includes:

- ∂ Tubes A & B
- ∂ Upper Base
- ∂ Upper Handle Rest
- ∂ Support Plate

1. Open all the boxes, then gather the hardware and all components.
2. Using the four pre-drilled pilot holes in the middle of each triangle on the Lower Base screw in the casters.
3. Attach Tube C to the Lower Base using four nuts and washers ****Do not overtighten****
4. Screw the Lower Handle Rest to the top of Tube C using four 1-5/8" Screws. Make sure the hole in the middle of the Lower Handle Rest lines up with Tube C.
5. Secure the Upper Handle Rest to the top of Tube A using 4 1-5/8" Screws.
6. Secure Tube A and the Upper Handle Rest to the Upper Base using the remaining four nuts and washers. ****Do not overtighten****
7. Using the pre-drilled countersunk holes towards the top to Tube C place Tube B in the completed Lower Tier and screw it into Tube C with two 1-5/8" Screws.
8. Screw the Support Plate to the top of Tube B using 8 1-5/8" Screws. Make sure the hole in the middle of the Support Plate lines up with the top of Tube B.
9. Center the assembled Upper Tier on top of the Lower Tier using eight 1-1/4" Screws to secure the Support Plate to the Upper Base.

SECTION 2000-DETAIL DRAWINGS

SINGLE SHOE SHELF FOR UPRIGHT

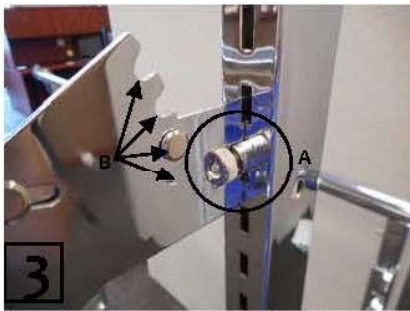


Saddle "Upright Bracket" over the existing H-Rack



Once The "Upright Bracket" is in place it will need to be secured with a nut and bolt (included).

As shown above.



Tighten the friction bolt (A) to secure the "Shoe Shelf". Then, adjust the angle of the "Shoe Shelf" (B) to get the desired angle.



Place the black plastic cap on the "Upright Bracket".



Lay the black styrene sheet in the shoe shelf to prevent shoes from slipping through.

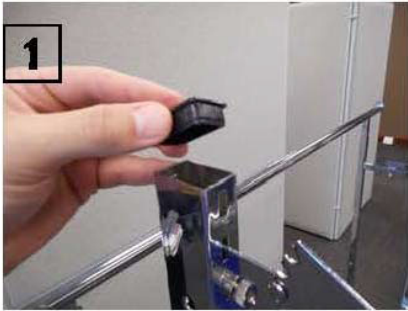


KEEP THESE PARTS!!!

The "Extension Bars" and hardware are for future double stacking the shoe shelves.

SECTION 2000-DETAIL DRAWINGS

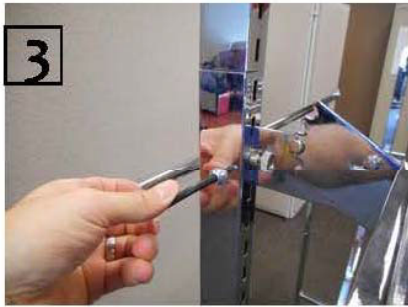
TWO TIER SHOE SHELVES FOR H-RACK



1
Remove the black plastic cap from the "Upright Bracket" to make room for the "Extension Bar".



2
Insert the "Extension Bar" back into the existing "Upright Bracket"



3
Secure the "Extension Bar" with the bolt and washer.



4
Add the black styrene to the additional shoe rack to finish the Two-Tier Shelf.



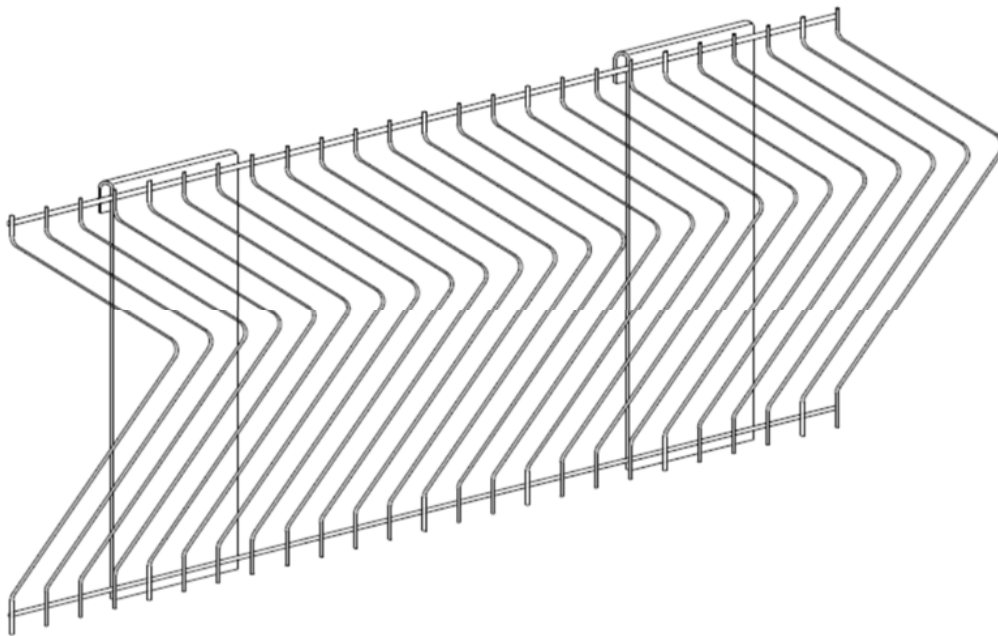
5
Insert the black cap that was removed from step 1 into the new "Extension Bar."



6
A Finished Two-Tier Shelf

SECTION 2000-DETAIL DRAWINGS

HOCKEY STICK DISPLAYER (41)



11024HOCKSTICK

6"x23 1/2"

HOLDS UP TO 24 STICKS UPRIGHT

SECTION 2000-DETAIL DRAWINGS

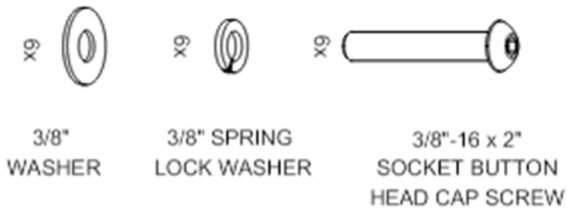
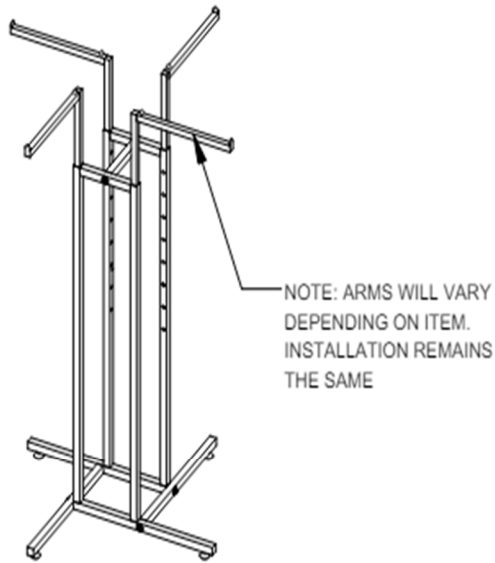
K10 4-WAY ASSEMBLY

Start With:
K10 Box

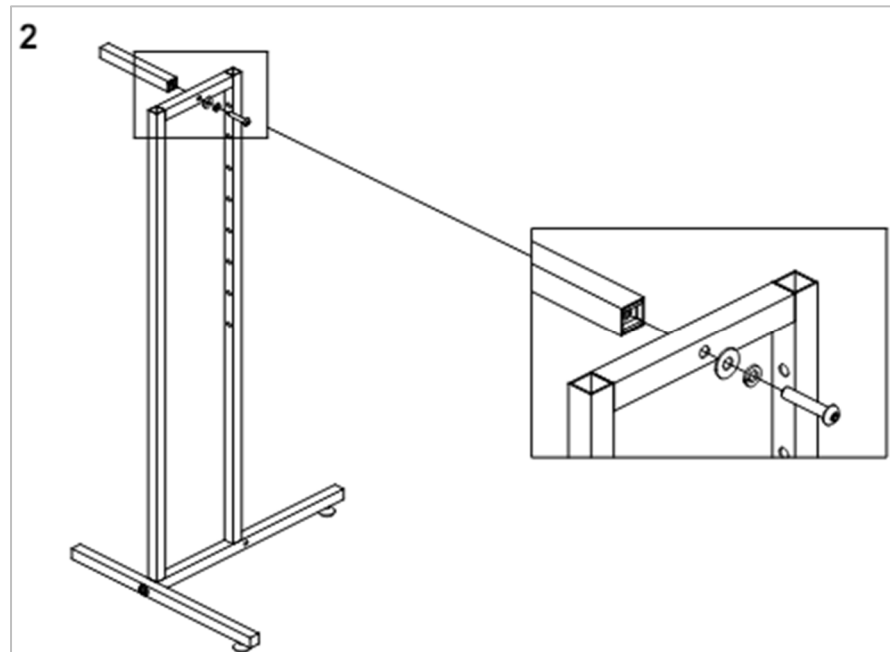
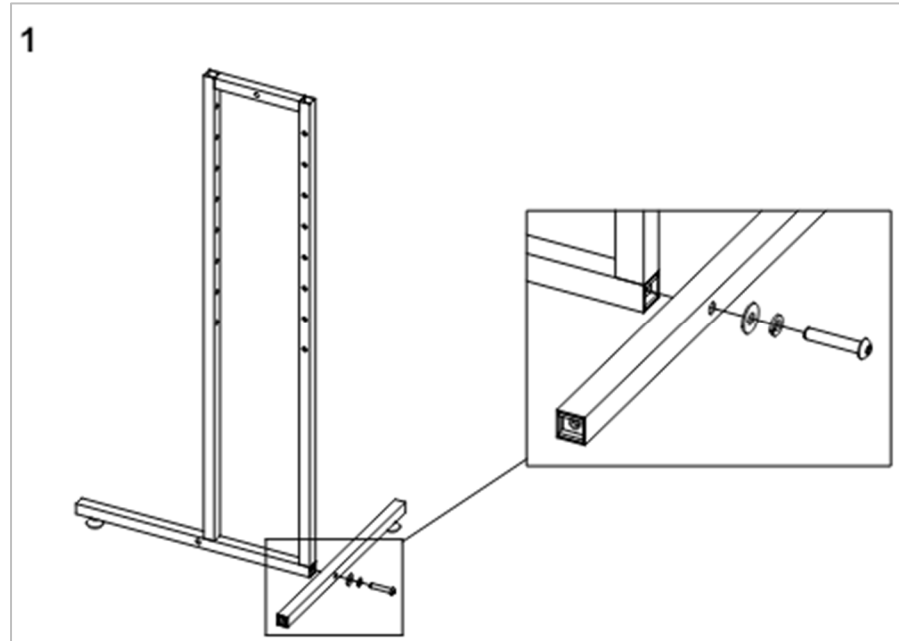
1. Empty contents of the K-10 box onto the floor. You will have two rectangular frames with round leveling feet and two straight bars with leveling feet.
2. Stand the rectangular frames up so the height adjustment holes face in. Attach the straight bars to the rectangular frames. Each straight bar attaches to both of the frames, one through the side and one through the end.
3. Tighten until the lock washer is flat. The top brace attaches between the frames through the hole in the top of each frame.
4. Insert one into each hole in the top of the rack.
5. Adjust the height by pressing the adjustment button.

SECTION 2000-DETAIL DRAWINGS

K-10 4 WAY DRAWING (A)



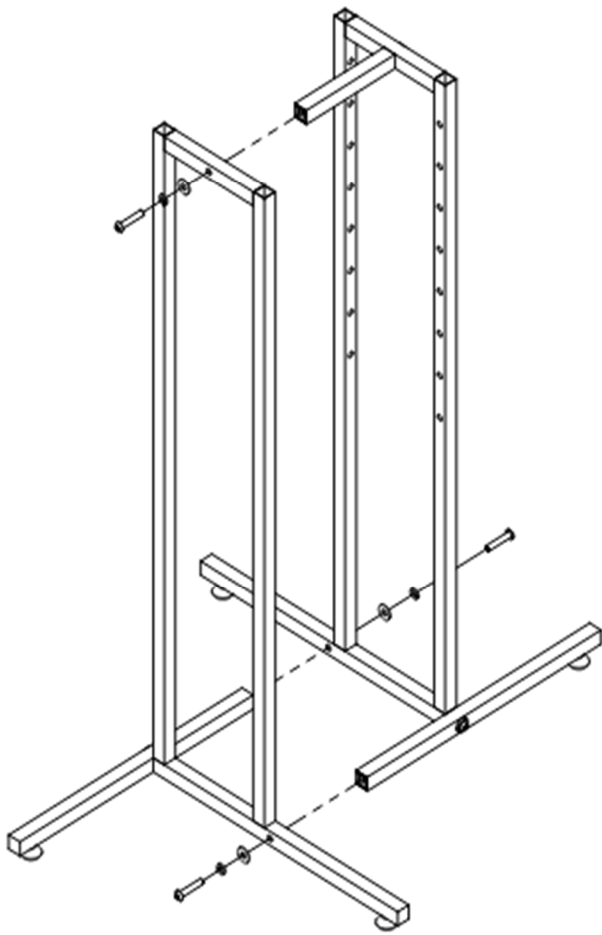
INCLUDED HARDWARE



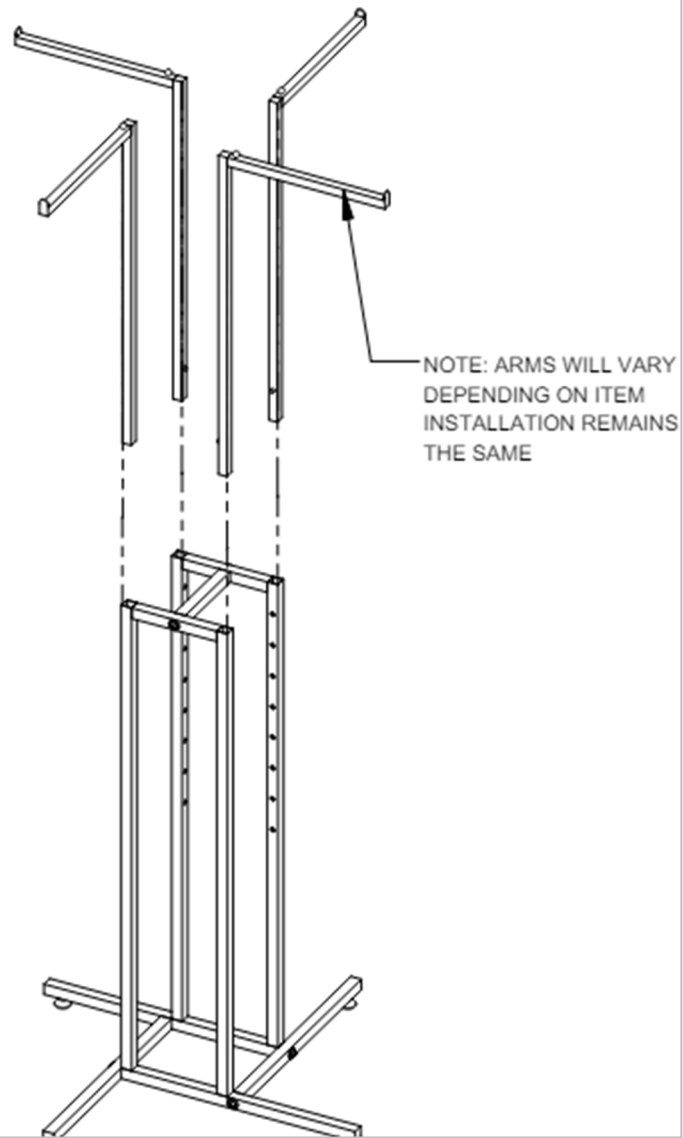
SECTION 2000- DETAIL DRAWINGS

K-10 4 WAY DRAWING (A) ASSEMBLY

3



4



SECTION 2000-DETAIL DRAWINGS

K41 H-RACK ASSEMBLY

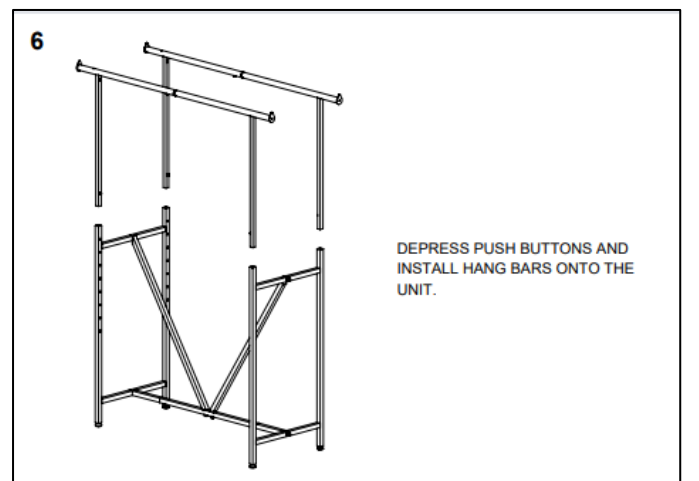
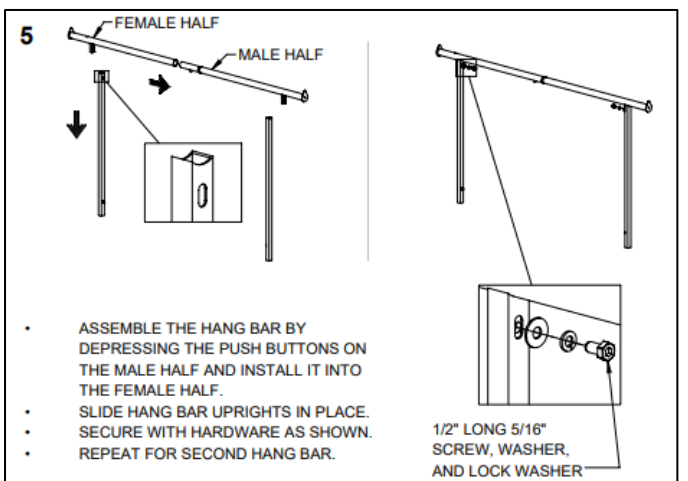
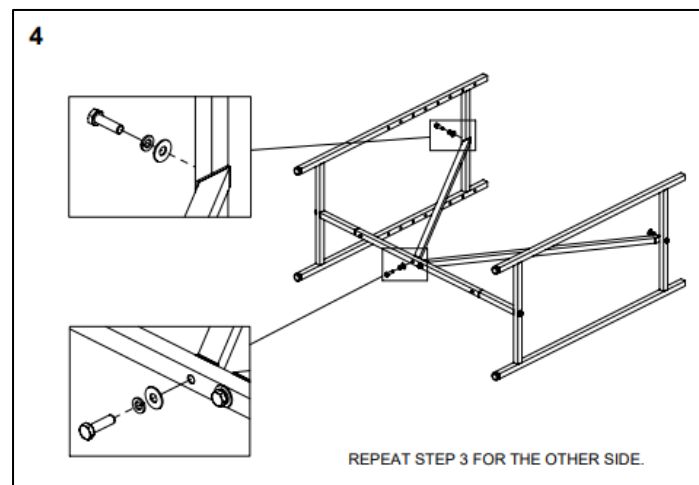
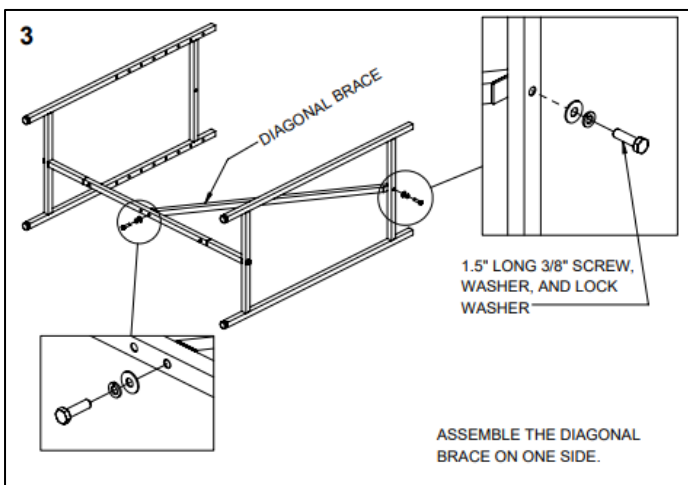
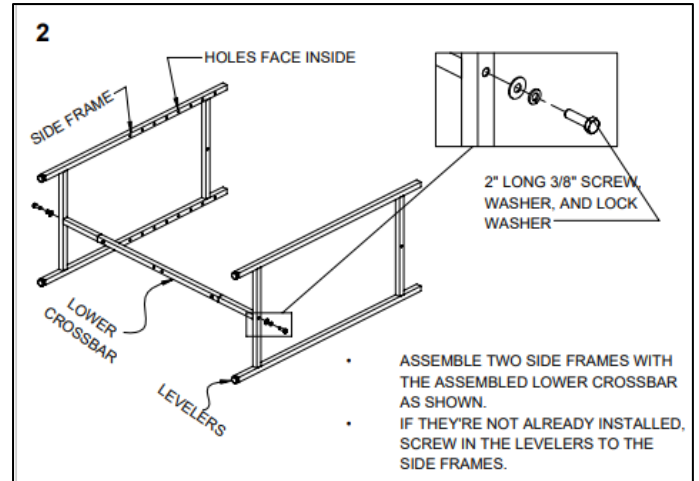
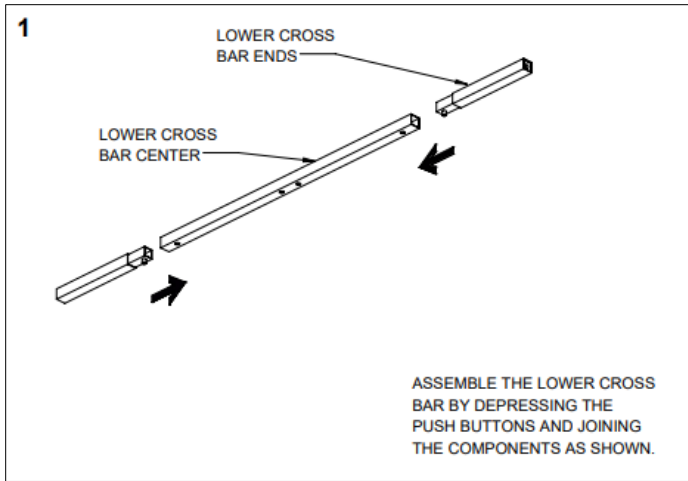
Start with:

K41 BOX:

- 2 rectangular frames (with round leveling feet)
 - 1 straight stretcher bar
 - 2 angled bars (labeled Diagonal brace on the diagram)
1. Empty K41 box onto the floor. Assemble the Lower Cross Bar by depressing the push buttons of the components.
 2. Assemble the two Side Frames with the Lower Cross Bar.
 3. Screw in the Levelers to the Side Frames
 4. Using the 1.5" x 3/8" screw, washer and lock washer attach the Diagonal Brace on one side. Repeat this step for the other side. Tighten the lock washers until flat.
 5. Assemble the hang bar by depressing the push buttons on the male half and install it into the female half.
 6. Slide the hang bar uprights in place. Secure with 1/2" x 5/16" screw, washer and lock washer. Repeat this step for the 2nd Hang bar
 7. Depress the push buttons and install the hang bars into the unit.

SECTION 5000- FIXTURE ASSEMBLY

K41 H-RACK ASSEMBLY



SECTION 5000- FIXTURE ASSEMBLY

K41 H-RACK END PANEL ASSEMBLY

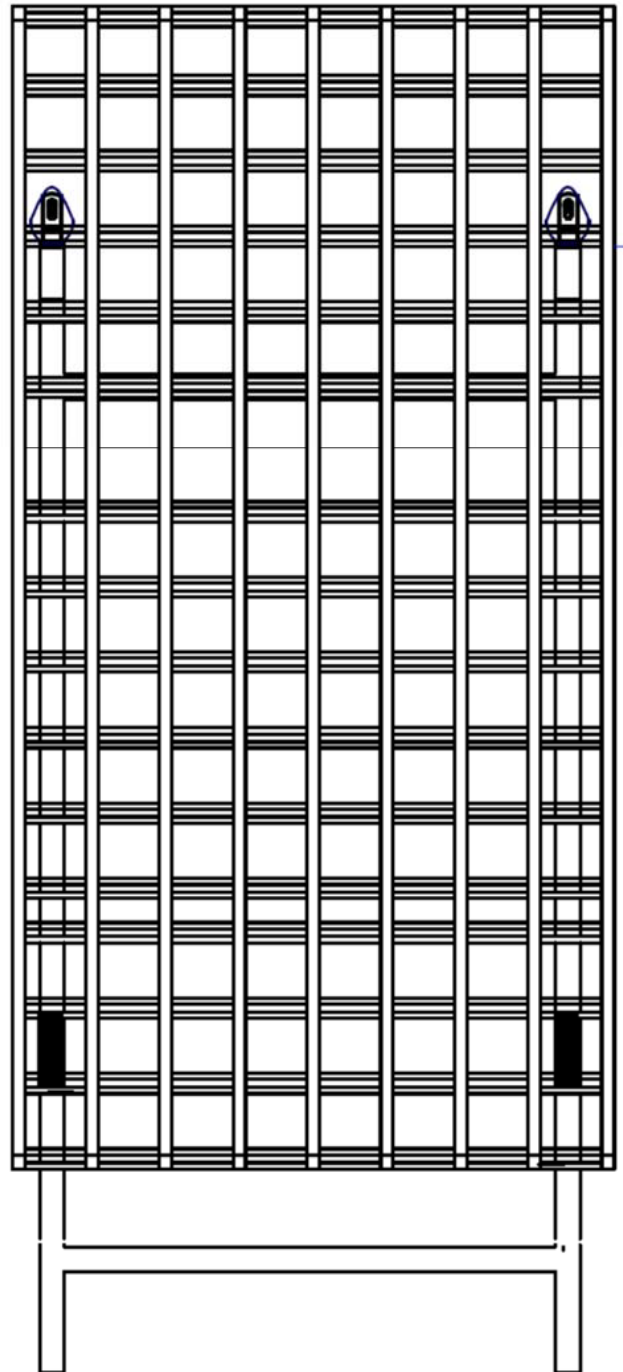
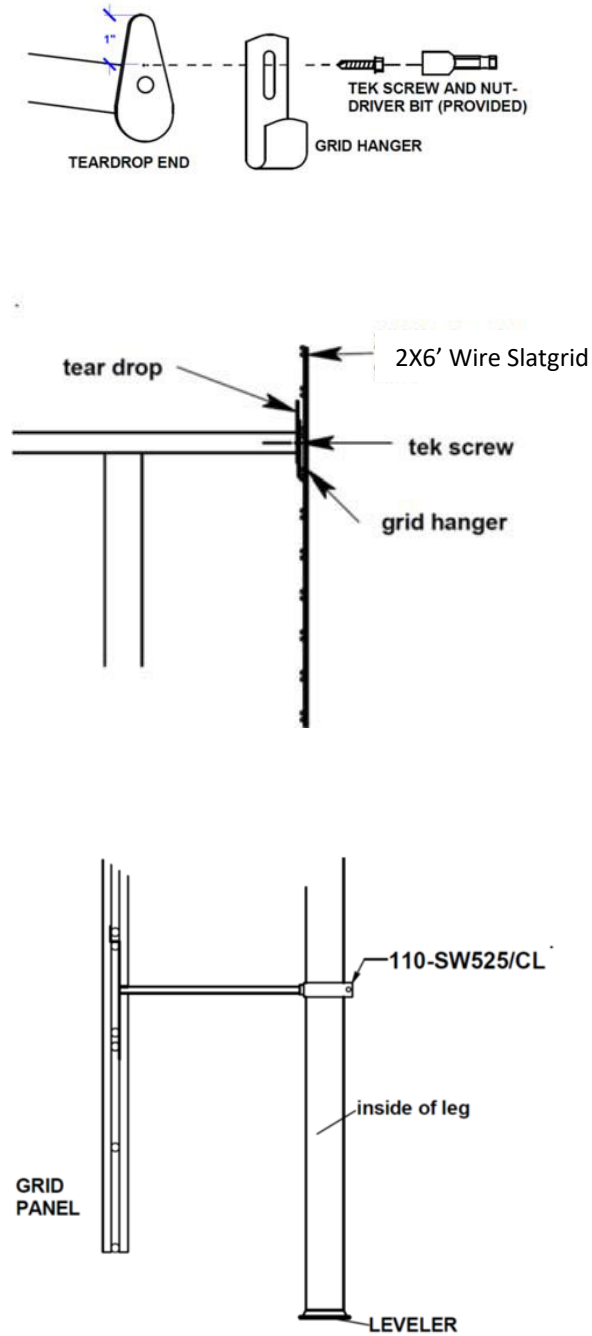
Start with:

- Assembled K41 H- Rack
- 2x6 Chrome Slatgrid
- Grid Hanger
- Tek Screw
- Nut-Driver Bit
- End Cap Spacer Bracket

1. Check the rack with a level, and adjust the leveling feet if needed.
2. Measure down 1" from the top of the hang bars teardrop end. Begin with a grid hanger & a Tek screw.
3. Fasten a grid hanger to each teardrop end using the provided nut driver bit in a power drill or power screwdriver. Steady pressure is needed to drive the screw through metal.
4. Hang the 2x6 chrome slatgrid by the fourth square from the top.
5. Place an endcap spacer bracket on the back of the slatgrid panel up 2 or 3 squares in line with the racks leg. Attach the spacers to the legs of the rack.

SECTION 5000- FIXTURE ASSEMBLY

K41 H-RACK END PANEL ASSEMBLY (C)



D-E Assembly & Instructional Videos:

D-E HAS CREATED A YOUTUBE CHANNEL TO ASSIST OUR CUSTOMERS WITH FIXTURE ASSEMBLY. WE INVITE YOU TO GO TO WWW.YOUTUBE.COM/DESIGNEDENVIRONMENTS, SCAN THE CORRESPONDING QR CODES WITH YOUR SMART PHONE, OR CLICK THE LINKS POSTED BELOW TO VIEW OUR SHORT VIDEOS. YOU ARE ALSO WELCOME TO CALL US AT 320-235-0852 OR E-MAIL INFO@D-E.NET FOR ASSISTANCE.



Shipping & Receiving Video

<http://www.youtube.com/watch?v=qMOxGRyGHgg&list=UUXtOAQKYEWx6tvR-tuMvqTw&index=4>



H-RACK ASSEMBLY

<https://www.youtube.com/watch?v=tjtx4qO6r44>



H-RACK END PANEL ASSEMBLY

<https://www.youtube.com/watch?v=1CnQ9VYvkrY>



Window Treatment Video

<https://www.youtube.com/watch?v=CWbKevvZg84>



THANK YOU FOR YOUR PARTNERSHIP.

We look forward to working with you!
Please contact us at any time with questions.

WEBSITE: www.d-e.net/shop

PHONE: 320-235-0852

EMAILS:

Derrick Cruze – President/CEO

derrick_cruze@d-e.net

Will Hisken – Store Designer

will_hisken@d-e.net

Gina Schmitz – Operations Manager

gschmitz@d-e.net

Carrie Duke – Purchasing Agent

cduke@d-e.net

Jasmine Moreno – CSR/Account Manager

jmoreno@d-e.net



421 Benson Ave SE Willmar, MN 56201