



Safety Media
Fire & Life Safety Essentials

www.safetymedia.com
sales@safetymedia.com
1-800-420-9737

Regulatory Fire & Safety Signage

Oakville, Ontario

Fire Routes

Fire Route Application Package - Design Requirements for Signage

<https://www.oakville.ca/assets/general%20-%20residents/firerouteapplicationpackage2018.pdf>

* for signs in municipally owned or leased buildings

- Minimum 30cm in width and 45cm in height
- All legends in black except where noted
- Background material is to be 3M "SCOTCHLITE" white or equal
- Blank to be galvanized steel



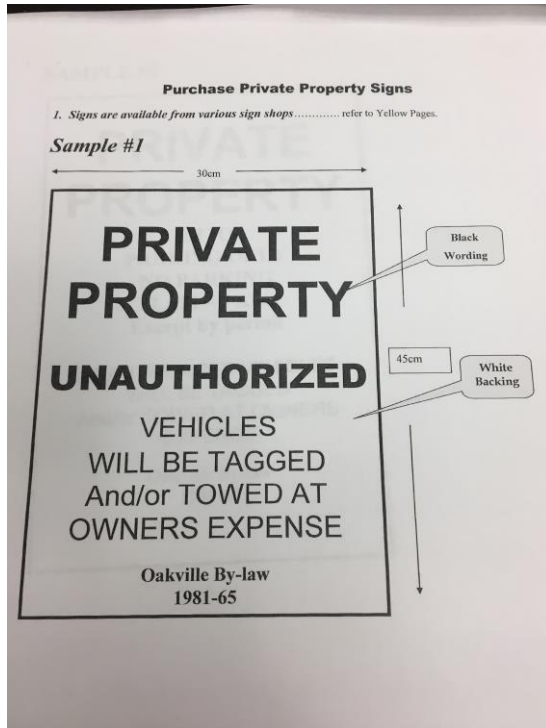
No

Parking

Bylaw Office 9058456601

Blanket Guidelines

- Must be located at each entrance to the property and should be visible from the parking area
- Fixed to a stationary galvanized steel "U" post, wall, or fence so that the sign is 2m above grade level
- If not a wall sign, the sign must be angled to face the direction of traffic entering the property so that drivers can see the sign upon entering
- At least 45cm in height, and not less than 30cm in width



No Smoking

Halton Region (Municipal) Requirements:

<http://sirepub.halton.ca/councildocs/pm/9/Apr%201%202009%20REGULAR%20MEETING%20OF%20REGIONAL%20COUNCIL%20Bylaw%20No%202409%20%20A%20bylaw%20to%20Prohibit%20Smoking%20wi%20%202409doc%20115558.pdf>

- White background with a graphic of the international no smoking symbol
- Includes the text: "Halton Region By-law No. 24-09" above the graphic
- Includes the text: "Within Nine Metres" below the graphic



Safety Media

Fire & Life Safety Essentials

www.safetymedia.com

sales@safetymedia.com

1-800-420-9737



No Smoking in public places

<http://www.elgar.ca/2001-%20smoking.pdf>

- Symbol of a cigarette within an interdictory symbol together with the words "Town of Oakville By-law"
- Letters and graphic symbols of colour must contrast with the background colour of the sign





Safety Media

Fire & Life Safety Essentials

www.safetymedia.com
sales@safetymedia.com
1-800-420-9737

No Smoking in the workplace

<https://assets.oakville.ca/blis/BylawIndexLibrary/1994-217.pdf#search=no%20smoking&toolbar=1&navpanes=0>

- Consist of a depiction of a burning cigarette contained within a circle graphic and with an interdictory stroke through the cigarette
- Carry the text “No Smoking” in capital or lowercase letters, or a combination
- Size of lettering requirements, based on viewing distance
 - 3m or less → height of 2.5cm
 - 6.1m or less → height of 5.1cm
 - 12.2m or less → height of 7.6cm
 - 24.4m or less → height of 10.2cm
 - 48.8m or less → height of 15.2cm
 - 73.2m or less → height of 20cm
- Text included at the bottom states: “Town of Oakville By-law, Maximum Penalty \$5,000.00”
 - Text must be in at least 5% of the diameter of the circle
 - Can add symbols such as directional arrows
 - Letters not less than 1.3cm in height for signs with letter size of 2.5cm
 - Or else, letters not less than 0.64cm of the height of the letters on all other sizes of signs
- Symbols are on a white background
- Circle and interdictory stroke are in red
- Cigarette, letters, and figures are in black

Diameter of the circle requirements, based on viewing distance

- 3m or less → 10.2 cm diameter
- 6.1m or less → 15.2cm diameter
- 12.2m or less → 20cm diameter
- 24.4m or less → 30.5cm diameter
- 48.8m or less → 40.6cm diameter
- 73.2m or less → 61cm diameter



Towing

Bylaw Office 9058456601

- No requirements for posting on private property
- Businesses - will need a sign permit
- See sample signs under [No Parking](#)

No Dumping

Bylaw Office 9058456601

- No requirements for posting on private property
- Businesses - will need a sign permit

Underground Parking

Bylaw Office 9058456601

- No requirements for posting on private property
- Businesses - will need a sign permit

Building Code Extracts

http://tnb.ca/en/brands/emergi-lite/files/EL_NBC%20BUILDING%20CODE_EN.pdf

Every exit door shall have an exit sign placed over it or adjacent to it if the exit serves

- A building that is 3 storeys in building height
- A building having an occupant load of more than 150
- A room or floor area that has a fire escape as part of a required means of egress

Every exit sign shall:

- Be visible on approach to the exit
- Consist of a green pictogram and a white or lightly tinted graphical symbol meeting the colour specifications referred to in ISO 3864-1, "Graphical symbols – Safety colours and safety signs – Part 1: Design principles for safety signs in workplaces and public areas," and c) conform to the dimensions indicated in ISO 7010, "Graphical symbols – Safety colours and safety signs – for the following symbols (see A-3.4.5.1.(2)(c))
 - i) E001 emergency exit left,
 - ii) E002 emergency exit right,



Safety Media

Fire & Life Safety Essentials

www.safetymedia.com
sales@safetymedia.com
1-800-420-9737

- iii) E005 90-degree directional arrow, and
- iv) E006 45-degree directional arrow.
- Internally illuminated exit signs shall be continuously illuminated and
 - Where illumination of the sign is powered by an electrical circuit, be constructed in conformance with CSA C22.2 No. 141, "Emergency Lighting Equipment,"
 - Where illumination of the sign is not powered by an electrical circuit, be constructed in conformance with CAN/ULC-S572, "Photoluminescent and Self-Luminous Signs and Path Marking Systems."
- Externally illuminated exit signs shall be continuously illuminated and be constructed in conformance with CAN/ULC-S572, "Photoluminescent and Self-Luminous Signs and Path Marking Systems." (See A-3.4.5.1. (4)
- The circuitry serving lighting for externally and internally illuminated exit signs shall a) serve no equipment other than emergency equipment, and b) be connected to an emergency power supply as described in Sentences 9.9.12.3.(2), (3) and (7).
- Where no exit is visible from a public corridor, from a corridor used by the public, or from principal routes serving an open floor area having an occupant load of more than 150, an exit sign conforming to Clauses (2)(b) and (c) with an arrow or pointer indicating the direction of egress shall be provided

Fire Safety Box Provisions

Fire Prevention Officer

905-815-2008, ext.2008

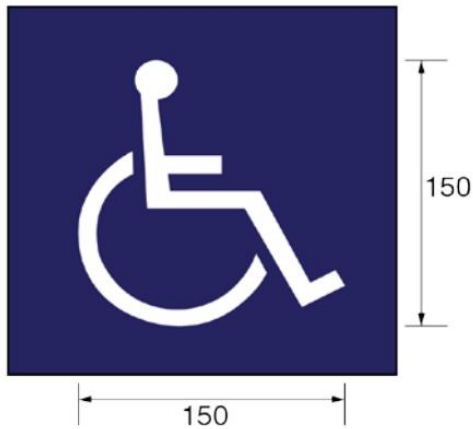
- Oakville currently has no bylaw for fire safety plan boxes, and thus has no specific requirements

Accessibility Guidelines

Universal Design Standards

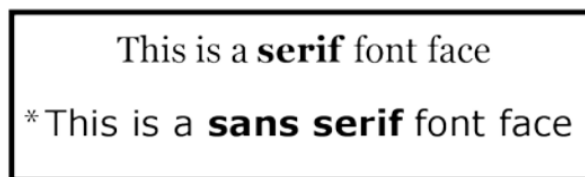
<https://www.oakville.ca/assets/general%20-%20residents/aUniversal-Design-Standards.pdf>

International symbol of accessibility:



Design Requirements

- Letters and numbers on signs must
 - Be sans serif
 - Have Arabic numbers
 - Have a width-to-height ratio between 3:5 and 1:1
 - Have a stroke-width-to-height ratio between 1:5 and 1:10



Tactile Sign Requirements:

- Text must be:
 - Raised a minimum 0.8mm
 - 16 to 50mm tall
 - Smooth edged
 - Sans serif font
 - Accompanied by Grade 2 Braille

Sign Finishes

- Must have a matte or glare-free finish for characters, symbols, and backgrounds
- Colour/tonal contrast



Safety Media

Fire & Life Safety Essentials

www.safetymedia.com

sales@safetymedia.com

1-800-420-9737

- Either light characters on a dark background or dark characters on a light background
- Recommended/most visible colours:
 - White or yellow on black, charcoal, dark blue, dark green, or purple
 - Black lettering on white is also acceptable (vice versa is less readable)

Pictograms

- Must be a minimum 150mm tall
- Accompanied with equivalent visual and tactile text placed directly below the pictogram



Washroom



Women's
Washroom



Men's
Washroom



Accessible
Washroom



Accessible
Men's
Washroom



Accessible
Women's
Washroom



Meeting



Telephone



Information

Electronic Signage

- Alternate formats must be provided for any type of electronic signage
 - Ex. video display terminals must provide alternative formats, such as audio, Braille, and min 16pt large-text print on highly contrasting background
- Touch screens and any buttons must be mounted 900mm to 1200mm AFF, be clearly identifiable by colour form background

Disclaimer: The material and information contained on this document is for general information purposes only. Please contact your local authorities before making any business, legal or other decision.