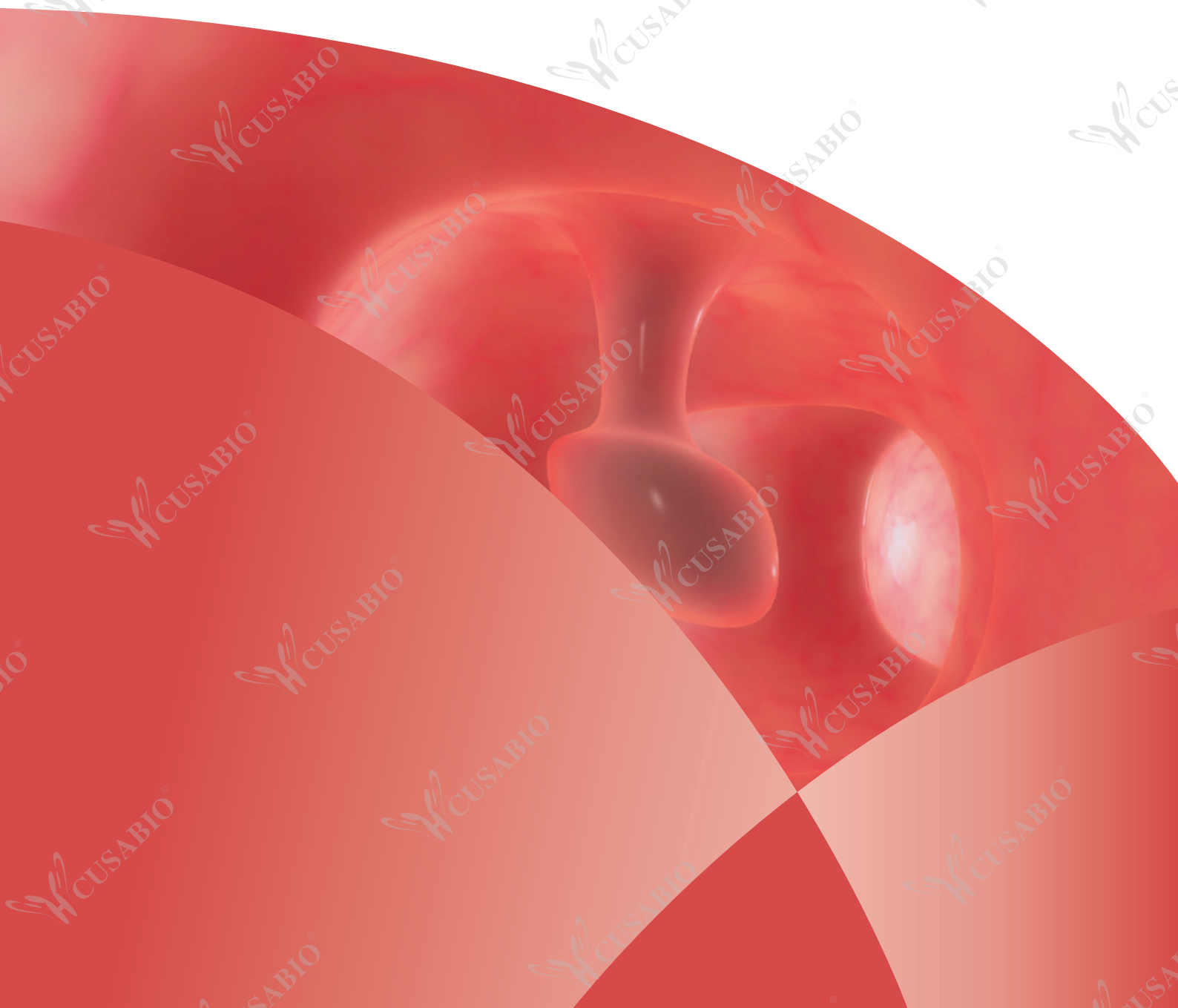




TUMOR MARKERS

YOUR GOOD PARTNER IN BIOLOGY RESEARCH



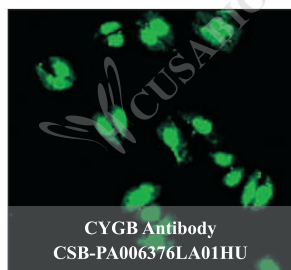
Cusabio Antibodies Associated With Tumor Markers

Target	Code	Reactivity	Application
ABI3BP	CSB-PA772035LA01HU	Human	ELISA, IHC
ACAA1	CSB-PA001117ESR1HU	Human, Mouse	ELISA, WB
ACP1	CSB-PA001176ESR2HU	Human	ELISA, WB, IHC
ACPP	CSB-PA11309A0Rb	Human	ELISA, IHC
AFP	CSB-PA09987A0Rb	Human	ELISA, IHC
AGK	CSB-PA706634LA01HU	Human, Mouse	ELISA, WB, IHC
AGR3	CSB-PA848404LA01HU	Human	ELISA
AKR1B10	CSB-PA001540ESR2HU	Human	ELISA, WB, IHC
AKR1C2	CSB-PA001543HA01HU	Human, Rat	ELISA, WB
ALDH1A1	CSB-PA001565ESR1HU	Human, Mouse	ELISA, WB, IHC
ALK	CSB-PA21109A0Rb	Human	ELISA, IHC, IF
ALKBH8	CSB-PA842644ESR1HU	Human	ELISA, IHC
AMBP	CSB-PA001654YA01HU	Human, Mouse	ELISA, WB, IHC
AMFR	CSB-PA333164LA01HU	Human	ELISA, WB, IHC
ANG	CSB-PA05729A0Rb	Human	ELISA, IHC
ANKRD11	CSB-PA757769LA01HU	Human	ELISA
ANTXR1	CSB-PA001832ESR1HU	Human	ELISA, IHC
B2M	CSB-PA002486YA01HU	Human, Mouse	ELISA, WB, IHC
BCAS2	CSB-PA002597ESR2HU	Human	ELISA, IHC
BCAS3	CSB-PA872507ESR1HU	Human	ELISA, IHC
BCL2	CSB-PA12959A0Rb	Human, Rat	ELISA, WB, IHC, IF
Ca12	CSB-PA004367YA01HU	Human, Mouse	ELISA, WB, IHC
Ca8	CSB-PA004379ESR1HU	Human, Mouse	ELISA, WB, IHC
CAB39L	CSB-PA872527LA01HU	Human	ELISA, WB
Cd276	CSB-PA745871ESR1HU	Human	ELISA, WB, IHC
CDR2	CSB-PA005103LA01HU	Human, Mouse	ELISA, WB, IHC
CEACAM6	CSB-PA005166LA01HU	Human	ELISA, IHC, IF
CFAP52	CSB-PA839781LA01HU	Human	ELISA, WB, IHC
CHDH	CSB-PA839862LA01HU	Human	ELISA, IHC
CKAP4	CSB-PA005453LA01HU	Human	ELISA, WB
CKMT1A	CSB-PA09817A0Rb	Human	ELISA, IHC, IF
CLUAP1	CSB-PA836181LA01HU	Human	ELISA, IHC
CMC4	CSB-PA349766LA01HU	Human	ELISA, IHC
CSAG1	CSB-PA006033LA01HU	Human	ELISA, IHC
CSTA	CSB-PA006099DA01HU	Human	ELISA, WB, IHC
CTAGE5	CSB-PA006131LA01HU	Human	ELISA, IHC
CYGB	CSB-PA006376LA01HU	Human	ELISA, IHC, IF
DCUN1D1	CSB-PA839329HA01HU	Human	ELISA, IHC
DHX32	CSB-PA748724LA01HU	Human, Mouse	ELISA, WB, IHC
DLK1	CSB-PA006945LA01HU	Human	ELISA, WB, IHC, IF
EGFR	CSB-PA005571LA01HU	Human	ELISA, WB
ENO1	CSB-PA02395A0Rb	Human, Mouse	ELISA, WB, IHC, IF
ENO2	CSB-PA09764A0Rb	Human, Mouse	ELISA, WB, IHC
ENOX2	CSB-PA007677ESR1HU	Human	ELISA, IHC
ENTPD5	CSB-PA007694ESR2HU	Human, Mouse	ELISA, WB, IHC, IP
EPST11	CSB-PA839347LA01HU	Human	ELISA, WB, IHC
ERBB3	CSB-PA007765ESR1HU	Human	ELISA, IHC
ESR1	CSB-PA11399A0Rb	Human, Rat	ELISA, WB, IHC, ChIP
EZH1	CSB-PA852913DSR2HU	Human, Mouse	ELISA, WB, IHC
EZH2	CSB-PA613606ESR2HU	Human, Mouse	ELISA, WB
F8	CSB-PA007932LA01HU	Human	ELISA, IHC, IF
FAM107A	CSB-PA007987LA01HU	Human	ELISA, IHC
FAM89B	CSB-PA854045LA01HU	Human	ELISA
FERMT1	CSB-PA874786LA01HU	Human	ELISA, IHC, IF
FMNL1	CSB-PA008743LA01HU	Human	ELISA, IHC
FUCA1	CSB-PA009062LA01HU	Human	ELISA, IHC
FUT8	CSB-PA887159LA01HU	Human, Mouse	ELISA, WB, IHC
FXYD5	CSB-PA842655DSR1HU	Human	ELISA, IHC
GCSAM	CSB-PA854052LA01HU	Human	ELISA, IHC
GTPBP4	CSB-PA887173LA01HU	Human	ELISA, WB, IF
HDFG	CSB-PA01004A0Rb	Human	ELISA
HOXB13	CSB-PA842162LA01HU	Human, Mouse	ELISA, WB
HPN	CSB-PA010704LA01HU	Human, Mouse, Rat	ELISA, WB, IHC, IF
HSPA6	CSB-PA863082HA01HU	Human	ELISA, WB
HSPB1	CSB-PA10869A0Rb	Human	ELISA, WB, IHC
IL11RA	CSB-PA623927ESR1HU	Human	ELISA, IHC
KIAA1191	CSB-PA846582LA01HU	Human, Mouse	ELISA, WB, IHC
KRT19	CSB-PA11259A0Rb	Human	ELISA
KRT5	CSB-PA11689A0Rb	Human	ELISA, IF
LCPI	CSB-PA012824YA01HU	Human, Mouse	ELISA, WB, IHC, IF
LDHA	CSB-PA00045A0Rb	Human	ELISA, WB
LDHD	CSB-PA801250LA01HU	Human, Mouse	ELISA, WB, IHC, IF
LOXL2	CSB-PA897283LA01HU	Human, Mouse, Rat	ELISA, WB, IHC
LRRC15	CSB-PA819484LA01HU	Human	ELISA, IHC
LRRN2	CSB-PA013183LA01HU	Human	ELISA, IHC, IF
MAGEA10	CSB-PA013324LA01HU	Human	ELISA, WB, IHC
MAGEA5	CSB-PA013331LA01HU	Human	ELISA, IHC
MAGEB18	CSB-PA853461LA01HU	Human, Mouse	ELISA, WB

Cusabio Antibodies Associated With Tumor Markers

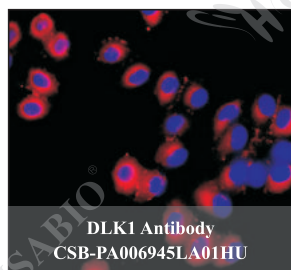
Target	Code	Reactivity	Application
MAGEC2	CSB-PA887003DSR2HU	Human	ELISA, IHC
MCC	CSB-PA013571LA01HU	Human	ELISA, IHC, IF
MLANA	CSB-PA621968ESR2HU	Human, Mouse	ELISA, WB, IHC
MOB1A	CSB-PA872519HA01HU	Human, Mouse	ELISA, WB, IHC
MSLN	CSB-PA015044ESR1HU	Human	ELISA, WB, IHC
MUC16	CSB-PA10657A0Rb	Human	ELISA, IHC
MUC2	CSB-PA015222LA01HU	Human	ELISA
NANOGP8	CSB-PA754125LA01HU	Human, Mouse, Rat	ELISA, WB
NAPSA	CSB-PA11529A0Rb	Human, Mouse	ELISA, WB, IHC
NDUFAF2	CSB-PA836643LA01HU	Human	ELISA, WB, IHC
NES	CSB-PA015713YA01HU	Human	ELISA, IHC, IF
NIPBL	CSB-PA750379LA01HU	Human	ELISA, WB, IHC
NMT1	CSB-PA015900LA01HU	Human	ELISA, IHC
OCC1	CSB-PA851524LA01HU	Human	ELISA, IHC
OC1AD1	CSB-PA882129LA01HU	Human, Mouse	ELISA, WB, IHC
OLFM4	CSB-PA764941LA01HU	Human, Rat	ELISA, WB, IHC
PAGE1	CSB-PA13219A0Rb	Human	ELISA, IHC
PGC	CSB-PA11299A0Rb	Human, Mouse	ELISA, WB
PGR	CSB-PA11385A0Rb	Human	ELISA
Pi3	CSB-PA017952HA01HU	Human	ELISA, IHC, IF
PIP	CSB-PA018020LA01HU	Human	ELISA, IHC
PKM	CSB-PA02949A0Rb	Human	ELISA, IHC, IF
PMEL	CSB-PA021324LA01HU	Human	ELISA, WB
PMPCB	CSB-PA018243ESR1HU	Human	ELISA, WB, IHC
POMC	CSB-PA018363OJ01HU	Human	ELISA, WB
POSTN	CSB-PA09905A0Rb	Human, Mouse	ELISA, WB, IHC, IF
POU5F1B	CSB-PA23129A0Rb	Human	ELISA, WB, IHC
PRAME	CSB-PA018603LA01HU	Human, Mouse	ELISA, WB, IHC, IF
PRR11	CSB-PA836225LA01HU	Human, Mouse	ELISA, WB, IHC, IF
PRSS3	CSB-PA12319A0Rb	Human	ELISA, WB
PRSS8	CSB-PA623091LA01HU	Human	ELISA, WB
PRUNE	CSB-PA771430LA01HU	Human	ELISA, IHC
PSAT1	CSB-PA018838LA01HU	Human	ELISA, IHC, IF
RAB25	CSB-PA019175LA01HU	Human, Mouse	ELISA, WB, IHC, IF
RBBP6	CSB-PA768776LA01HU	Human, Mouse	ELISA, WB, IHC, IF
RNF43	CSB-PA019892LA01HU	Human	ELISA, IHC
RNF5	CSB-PA857879DSR1HU	Human, Mouse	ELISA, WB, IHC, IF
RPL15	CSB-PA02435A0Rb	Human	ELISA, WB
RPL19	CSB-PA020160LA01HU	Human, Mouse	ELISA, WB, IHC, IF
RPL5	CSB-PA02495A0Rb	Human	ELISA, WB, IHC
RPLP2	CSB-PA020342DSR1HU	Human	ELISA, IHC
S100P	CSB-PA020645LA01HU	Human	ELISA, IHC, IF
S100PBP	CSB-PA822185LA01HU	Human	ELISA, IHC
SART3	CSB-PA624010HA01HU	Human	ELISA, IHC
SDF4	CSB-PA861120LA01HU	Human	ELISA, WB
SECTM1	CSB-PA819898LA01HU	Human	ELISA, IHC, IF
SERPINB3	CSB-PA11275A0Rb	Human	ELISA, IHC, IF
SERPINB4	CSB-PA021072LA01HU	Human	ELISA, IHC, IF
SERPINE1	CSB-PA11239A0Rb	Human	ELISA, WB, IHC, IF
SLC45A3	CSB-PA836239LA01HU	Human	ELISA, IHC
SPANXC	CSB-PA878921LA01HU	Human	ELISA, IHC
SPDEF	CSB-PA022518LA01HU	Human, Mouse	ELISA, WB, IHC
SPIN1	CSB-PA897305DSR1HU	Human	ELISA, WB, IHC
SSX5	CSB-PA022738ESR2HU	Human	ELISA, IHC
SULT1A1	CSB-PA022933ESR1HU	Human	ELISA, IHC
TACSTD2	CSB-PA023072ESR1HU	Human	ELISA, IHC
TAGLN2	CSB-PA023106DSR1HU	Human	ELISA, WB, IHC
TCERG1	CSB-PA023291LA01HU	Human, Rat	ELISA, WB, IHC
TFF3	CSB-PA11935A0Rb	Human	ELISA
THRSP	CSB-PA846095ESR1HU	Human	ELISA, WB, IHC
TIMM17A	CSB-PA860770ESR1HU	Human	ELISA, IHC
Tk1	CSB-PA023577HA01HU	Human	ELISA, WB, IHC
TP53INP2	CSB-PA812888LA01HU	Human	ELISA, IF
TPD52L1	CSB-PA624123ESR2HU	Human	ELISA, WB, IHC
TPD52L2	CSB-PA024098LA01HU	Human, Mouse	ELISA, WB, IHC, IF
TRAK1	CSB-PA891465LA01HU	Human	ELISA, IHC
TXN2	CSB-PA857458ESR2HU	Human, Mouse, Rat	ELISA, WB, IHC
UBAP1	CSB-PA873701LA01HU	Human	ELISA, IHC
UTP14A	CSB-PA883609ESR1HU	Human	ELISA
UXT	CSB-PA880062ESR1HU	Human	ELISA, WB, IHC
VIM	CSB-PA025857LA01HU	Human	ELISA, WB, IHC, IF
VMP1	CSB-PA856940LA01HU	Human, Mouse	ELISA, WB, IHC
WDR19	CSB-PA836733LA01HU	Human	ELISA, IHC, IF
WFDC2	CSB-PA09794A0Rb	Human, Mouse	ELISA, WB, IHC, IF
Wt1	CSB-PA11609A0Rb	Human	ELISA, IHC
XAGE2	CSB-PA839331LA01HU	Human	ELISA
ZBTB20	CSB-PA867198ESR1HU	Human	ELISA, IHC

© Partial Validation Images of IF



CYGB Antibody
CSB-PA006376LA01HU

Immunofluorescent analysis of HepG2 cells using CSB-PA006376LA01HU at a dilution of 1:100 and Alexa Fluor 488-conjugated AffiniPure Goat Anti-Rabbit IgG(H+L)



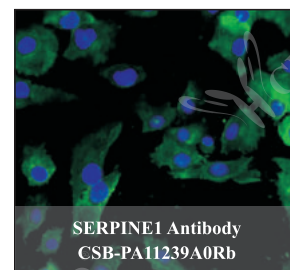
DLK1 Antibody
CSB-PA006945LA01HU

Immunofluorescent analysis of A549 cells using CSB-PA006945LA01HU at a dilution of 1:100 and Alexa Fluor 488-conjugated AffiniPure Goat Anti-Rabbit IgG(H+L)



Pi3 Antibody
CSB-PA017952HA01HU

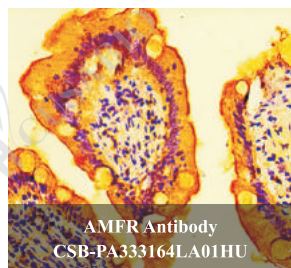
Immunofluorescent analysis of PC-3 cells using CSB-PA017952HA01HU at dilution of 1:100 and Alexa Fluor 488-conjugated AffiniPure Goat Anti-Rabbit IgG(H+L)



SERPINE1 Antibody
CSB-PA01459A0Rb

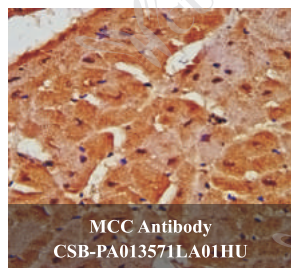
Immunofluorescent analysis of HeLa cells using CSB-PA01459A0Rb at a dilution of 1:100 and Alexa Fluor 488-conjugated AffiniPure Goat Anti-Rabbit IgG(H+L)

© Partial Validation Images of IHC



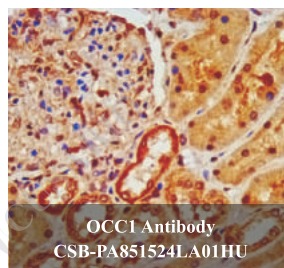
AMFR Antibody
CSB-PA333164LA01HU

IHC image of CSB-PA333164LA01HU diluted at 1:100 and staining in paraffin-embedded human small intestine tissue performed on a Leica BondTM system.



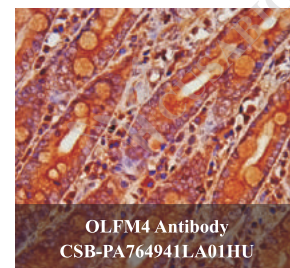
MCC Antibody
CSB-PA013571LA01HU

IHC image of CSB-PA013571LA01HU diluted at 1:500 and staining in paraffin-embedded human heart tissue performed on a Leica BondTM system.



OCCI Antibody
CSB-PA851524LA01HU

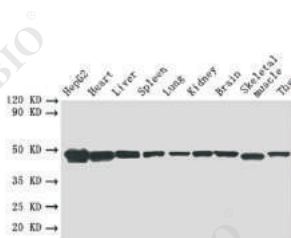
IHC image of CSB-PA851524LA01HU diluted at 1:600 and staining in paraffin-embedded human kidney tissue performed on a Leica BondTM system.



OLFM4 Antibody
CSB-PA764941LA01HU

IHC image of CSB-PA764941LA01HU diluted at 1:300 and staining in paraffin-embedded human small intestine tissue performed on a Leica BondTM system.

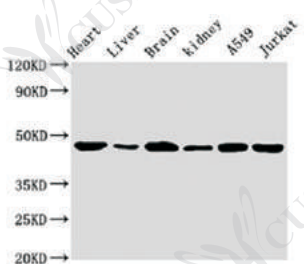
© Partial Validation Images of WB



ENO1 Antibody
CSB-PA02395A0Rb

Positive WB detected in: HepG2 whole cell lysate, Mouse heart tissue, Mouse liver tissue, Mouse spleen tissue, Mouse lung tissue, Mouse kidney tissue, Mouse brain tissue, Mouse skeletal muscle tissue, Mouse thymus tissue

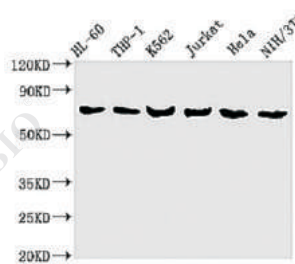
All lanes: ENO1 antibody at 2.5 ug/ml
Secondary
Goat polyclonal to rabbit IgG at 1/10000 dilution
Predicted band size: 48, 37 kDa
Observed band size: 48 kDa



ENO2 Antibody
CSB-PA09764A0Rb

Positive WB detected in: Mouse heart tissue, Mouse liver tissue, Mouse brain tissue, Mouse kidney tissue, A549 whole cell lysate, Jurkat whole cell lysate

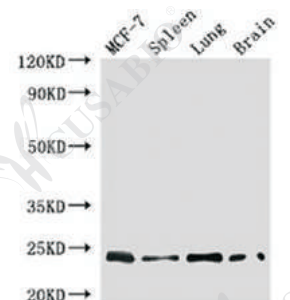
All lanes: ENO2 antibody at 1.5 ug/ml
Secondary
Goat polyclonal to rabbit IgG at 1/10000 dilution
Predicted band size: 48, 43 kDa
Observed band size: 48 kDa



LCPI Antibody
CSB-PA012824YA01HU

Positive WB detected in: HL-60 whole cell lysate, THP-1 whole cell lysate, K562 whole cell lysate, Jurkat whole cell lysate, HeLa whole cell lysate, NIH/3T3 whole cell lysate

All lanes: LCPI antibody at 8 ug/ml
Secondary
Goat polyclonal to rabbit IgG at 1/10000 dilution
Predicted band size: 71, 22 kDa
Observed band size: 71 kDa



RAB25 Antibody
CSB-PA019175LA01HU

Positive WB detected in: MCF-7 whole cell lysate, Mouse spleen tissue, Mouse lung tissue, Mouse brain tissue

All lanes: RAB25 antibody at 4ug/ml
Secondary
Goat polyclonal to rabbit IgG at 1/50000 dilution
Predicted band size: 24 kDa
Observed band size: 24 kDa



CUSABIO TECHNOLOGY LLC

Postal Address: 6161 Savoy Dr. Suite 1018 Houston, TX 77036, USA

Tel: 301-363-4651 (Available 9 a.m. to 5 p.m. EST from Monday to Friday)

Email: antibody3@cusabio.com **Web:** www.cusabio.com