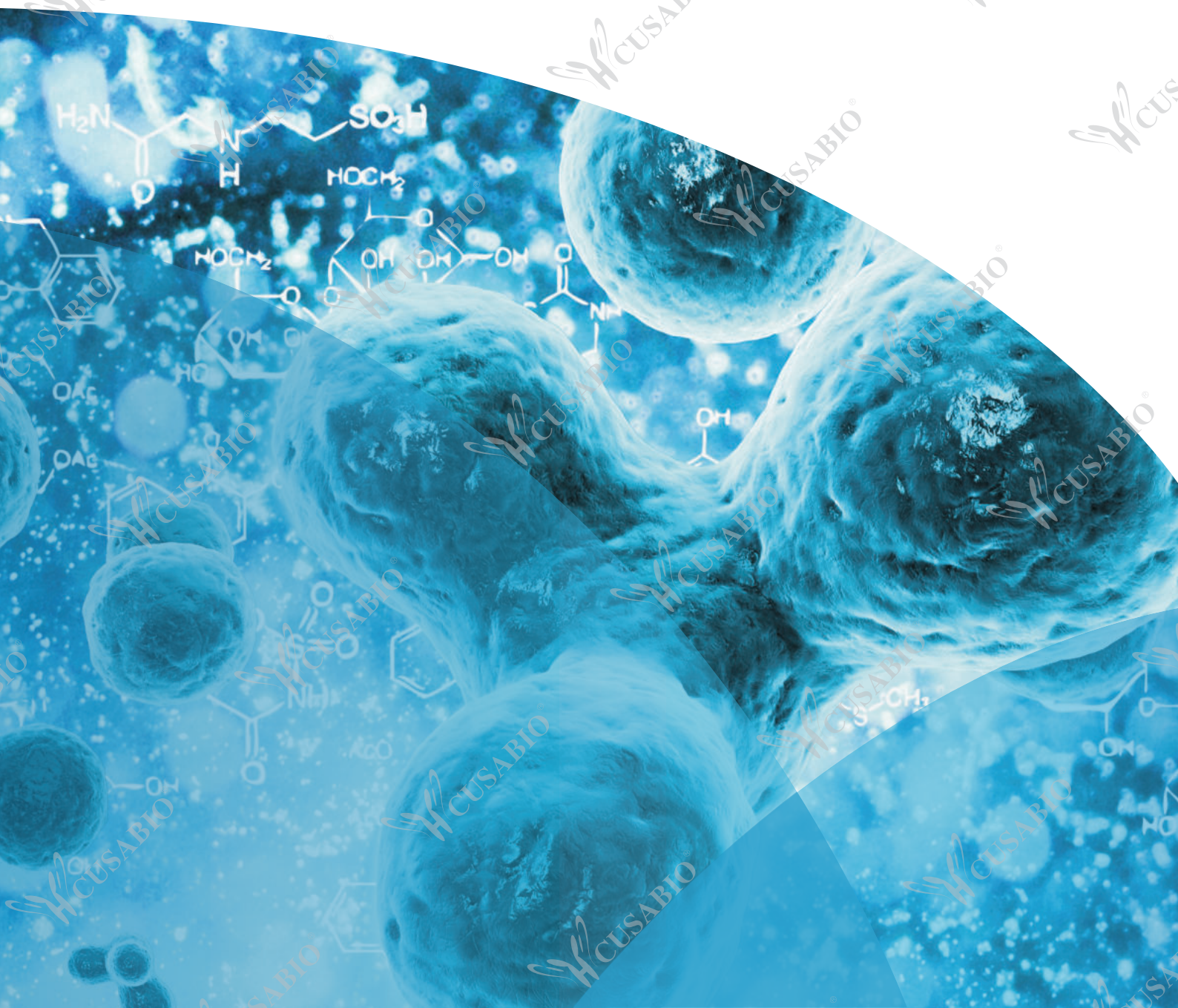


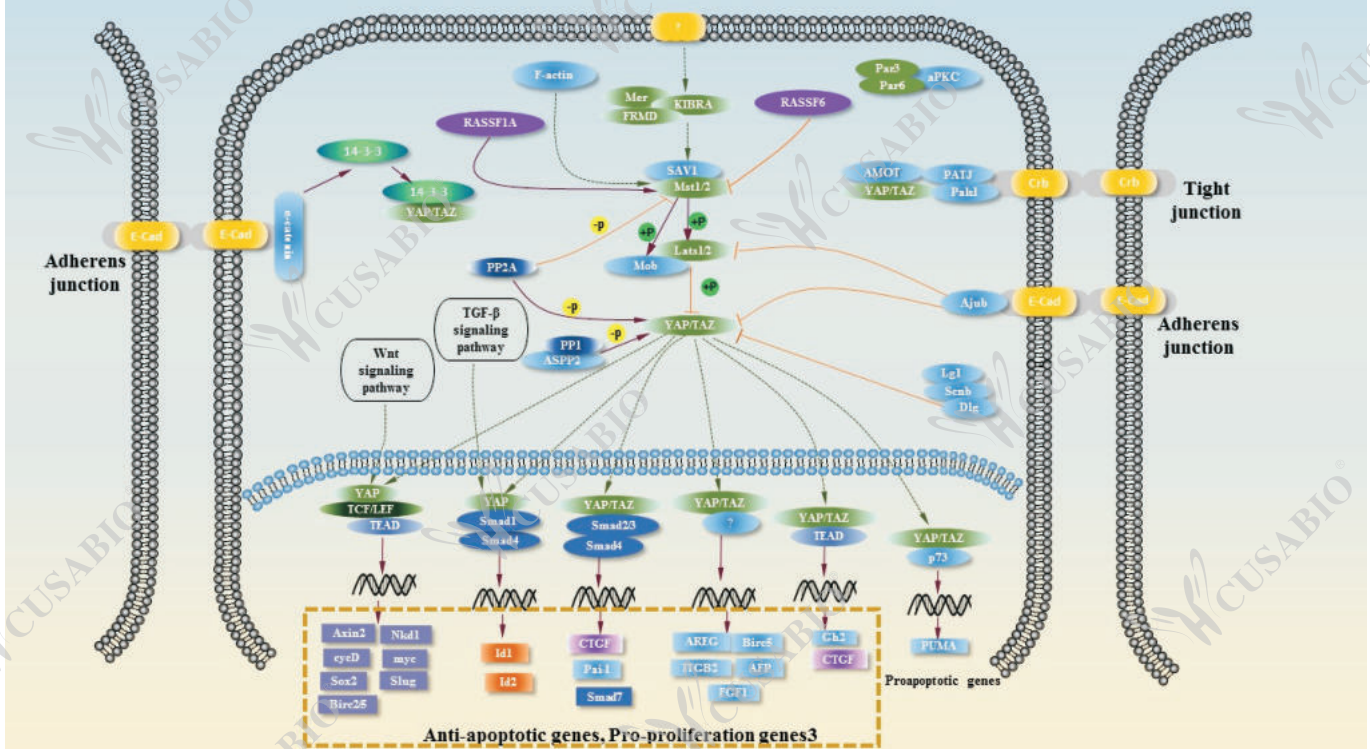


HIPPO SIGNAL PATHWAY

YOUR GOOD PARTNER
IN BIOLOGY RESEARCH



Hippo Signal Pathway



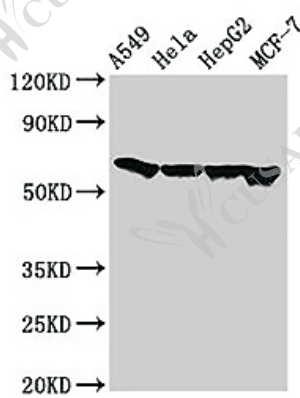
CUSABIO Antibodies For Hippo Signal Pathway Research (Partial)

Target	Code	Reactivity	Application	Target	Code	Reactivity	Application
ACTB	CSB-PA01629A0Rb	Human, Mouse	ELISA, WB, IHC, IF	FZD3	CSB-PA768769LA01HU	Human	ELISA, WB, IHC
ACTG1	CSB-PA02619A0Rb	Human	ELISA, WB, IHC, IF	FZD4	CSB-PA009963LA01HU	Human, Mouse	ELISA, WB, IF
AFP	CSB-PA09989A0Rb	Human	ELISA, WB	FZD8	CSB-PA010967LA01HU	Human	ELISA, IHC, IF
AMH	CSB-PA12639A0Rb	Human, Mouse	ELISA, WB, IHC, IF	FZD9	CSB-PA011884LA01HU	Human	ELISA, IHC, IF
AMOT	CSB-PA001677ESR2HU	Human	ELISA, WB, IHC	GDF5	CSB-PA012769LA01HU	Human	ELISA, IHC, IF, IP
ANAPC2	CSB-PA892446DSR1HU	Human	ELISA, IHC, IF	GDF7	CSB-PA012856LA01HU	Human, Mouse	ELISA, WB, IHC, IF
AREG	CSB-PA11339A0Rb	Human	ELISA, IHC, IF	GSK3B	CSB-PA764711LA01HU	Human	ELISA, IF
AXIN1	CSB-PA517675LA01HU	Human	ELISA, IHC	Id2	CSB-PA013498LA01HU	Human	ELISA, IHC, IF
BIRC5	CSB-PA07249A0Rb	Human	ELISA, IF	ITGB2	CSB-PA872519HA01HU	Human, Mouse	ELISA, WB, IHC, IF, IP
BMP2	CSB-PA09419A0Rb	Human	ELISA, WB, IHC, IF	LATS1	CSB-PA762574HA01HU	Human, Mouse	ELISA, IHC, IF, IP
BMP4	CSB-PA05799A0Rb	Human, Mouse, Rat, Zebrafish	ELISA, WB, IHC	LEF1	CSB-PA847626LA01HU	Human	ELISA, IF
BMP6	CSB-PA10709A0Rb	Human	ELISA, IHC	LLGL2	CSB-PA02589A0Rb	Human, Mouse	ELISA, WB, IHC
BMP7	CSB-PA05805A0Rb	Human, Mouse	ELISA, WB, IHC, IF	MARK3	CSB-PA801219ESR1HU	Human	ELISA, IHC
BMPR1A	CSB-PA002748LA01HU	Human	ELISA, WB, IHC, IF	MOB1A	CSB-PA015741LA01HU	Human, Mouse	ELISA, WB, IHC, IF
BMPR1B	CSB-PA002751LA01HU	Human, Rat	ELISA, WB, IHC, IF	MOB1B	CSB-PA015987LA01HU	Human	ELISA, IHC, IF
BTRC	CSB-PA897464LA01HU	Human	ELISA, WB, IHC, IF	MPP5	CSB-PA819481LA01HU	Human	ELISA, WB, IHC
CASP3	CSB-PA05689A0Rb	Human	ELISA, IHC, IF	MYC	CSB-PA878839LA01HU	Human, Mouse	ELISA, WB, IF
CCND1	CSB-PA004811LA01HU	Human	ELISA	NEK8	CSB-PA861174DSR1HU	Human	ELISA, IHC, IF
CCND2	CSB-PA004812ESR2HU	Human	ELISA, WB, IHC, IF	Nf2	CSB-PA863155LA01HU	Human, Mouse	ELISA, WB, IF
CCND3	CSB-PA004814ESR2HU	Human	ELISA, WB, IHC, IF, IP	NPHP4	CSB-PA018503LA01HU	Human	ELISA, IHC, IF
CDH1	CSB-PA005034MA01HU	Human	ELISA, WB, IHC, IF, IP	PARD3	CSB-PA018504LA01HU	Human	ELISA, WB, IHC
CRB1	CSB-PA005941DSR1HU	Human	ELISA, IHC, IF	PARD6A	CSB-PA018505LA01HU	Human, Mouse	ELISA, WB, IHC
CRB2	CSB-PA692212LA01HU	Human	ELISA, IHC	PARD6B	CSB-PA018559LA01HU	Human, Mouse	ELISA, WB, IHC, IF
CSNK1D	CSB-PA006067LA01HU	Human	ELISA, WB, IHC, IF, IP	PARD6G	CSB-PA00985A0Rb	Human	ELISA, WB, IHC, IF
CSNK1E	CSB-PA01319A0Rb	Human	ELISA, WB, IHC, IF	PPP1CA	CSB-PA830420ESR1HU	Human	ELISA, WB, IHC
CTGF	CSB-PA09429A0Rb	Human	ELISA, IHC, IF	PPP1CB	CSB-PA018564LA01HU	Human, Mouse, Rat	ELISA, WB, IHC, IF
CTNNA1	CSB-PA006164EA01HU	Human, Mouse	ELISA, WB, IHC, IF	PPP1CC	CSB-PA018565LA01HU	Human	ELISA, IHC, IF
CTNNA2	CSB-PA006165LA01HU	Human	ELISA, IF	PPP2CA	CSB-PA727750LA01HU	Human	ELISA, WB, IHC, IF
CTNNB1	CSB-PA00174A0Rb	Human	ELISA, WB, IHC, IF, IP	PPP2CB	CSB-PA15889A0Rb	Human	ELISA, IF
DLG1	CSB-PA614264LA01HU	Human	ELISA, IHC, IF	PPP2R1B	CSB-PA04329A0Rb	Human	ELISA, IHC, IF
DLG2	CSB-PA621882LA01HU	Human, Rat	ELISA, WB, IHC, IF	PPP2R2A	CSB-PA885715LA01HU	Human	ELISA, IHC
DVL2	CSB-PA007286ESR2HU	Human	ELISA, WB, IHC, IF	PPP2R2B	CSB-PA754570ESR2HU	Human	ELISA, IHC
DVL3	CSB-PA856442LA01HU	Human	ELISA, IHC, IF	PPP2R2D	CSB-PA875672ESR2HU	Human	ELISA, WB, IHC, IF, IP
FAT4	CSB-PA740927LA01HU	Human	ELISA, IF	PRK CZ	CSB-PA020893LA01HU	Human, Mouse, Rat	ELISA, WB, IHC, IF
FBXW11	CSB-PA891721ESR2HU	Human	ELISA, WB, IHC	RAC1	CSB-PA11239A0Rb	Human	ELISA, WB, IHC, IF
FGF1	CSB-PA008615ESR1HU	Human, Mouse	ELISA, WB, IHC, IF	RASSF1	CSB-PA618998LA01HU	Human, Mouse	ELISA, WB, IHC, IF
FRMD6	CSB-PA822270ESR2HU	Human	ELISA, WB, IHC	RASSF6	CSB-PA15557A0Rb	Human, Mouse	ELISA, WB, IHC, IF
FZD1	CSB-PA891570LA01HU	Human	ELISA, IHC, IF	SAV1	CSB-PA021788ESR2HU	Human	ELISA, WB, IHC, IF, IP
FZD10	CSB-PA891782LA01HU	Human	ELISA, WB, IHC, IF	SDCBP	CSB-PA619768LA01HU	Human	ELISA, WB, IHC, IP

CUSABIO Antibodies For Hippo Signal Pathway Research

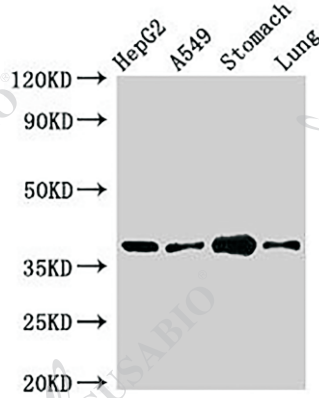
Target	Code	Reactivity	Application	Target	Code	Reactivity	Application
SERPINE1	CSB-PA021869LA01HU	Human	ELISA, IHC, IF	WNT1	CSB-PA026138LA01HU	Human, Mouse	ELISA, WB, IHC, IF
SMAD1	CSB-PA022419LA01HU	Human, Rat, Mouse	ELISA, WB, IHC	WNT10A	CSB-PA872432ESR1HU	Human	ELISA, IHC
SMAD2	CSB-PA16539A0Rb	Human, Mouse	ELISA, WB, IHC, IF	WNT2	CSB-PA026141LA01HU	Human	ELISA, IF
SMAD3	CSB-PA614396ESR2HU	Human	ELISA, WB, IHC, IF	WNT3A	CSB-PA026142ESR1HU	Human, Mouse	ELISA, WB, IHC
SMAD4	CSB-PA023363DSR2HU	Human	ELISA, WB, IHC, IF	WNT4	CSB-PA863951LA01HU	Human	ELISA, IHC
SNAI2	CSB-PA860344LA01HU	Human	ELISA, IHC	WNT5A	CSB-PA026145ESR1HU	Human	ELISA, IHC
SOX11	CSB-PA618010LA01HU	Human	ELISA, WB, IHC	WNT5B	CSB-PA026146LA01HU	Human	ELISA, IHC
SOX2	CSB-PA07309A0Rb	Human	ELISA, IHC	WNT7A	CSB-PA734879LA01HU	Human	ELISA, IHC
STK3	CSB-PA07315A0Rb	Human	ELISA, WB, IHC	WNT7B	CSB-PA01544A0Rb	Human, Mouse, Rat, Zebrafish	ELISA, WB, IHC, IF
TEAD1	CSB-PA023449LA01HU	Human	ELISA, IHC	WNT8A	CSB-PA026287DA01HU	Human, Mouse	ELISA, WB, IHC, IF
TEAD3	CSB-PA023451LA01HU	Human	ELISA, WB, IHC, IF	WNT9A	CSB-PA026288LA01HU	Human, Mouse	ELISA, WB, IHC, IP
TEAD4	CSB-PA023452LA01HU	Human	ELISA, IHC, IF	WNT9B	CSB-PA02174A0Rb	Human, Mouse	ELISA, WB, IHC, IF
TGFB1	CSB-PA07889A0Rb	Human, Mouse	ELISA, WB, IHC, ChIP	WWC2	CSB-PA026290ESR1HU	Human, Mouse	ELISA, WB, IHC, IF
TGFB2	CSB-PA622676ESR2HU	Human, Mouse	ELISA, WB	YWHAB	CSB-PA01459A0Rb	Human, Mouse	ELISA, WB, IHC, IF
TGFB3	CSB-PA026128LA01HU	Human	ELISA, IHC	YWHAE	CSB-PA882067ESR1HU	Human, Rat	ELISA, WB, IHC
TGFBR1	CSB-PA884424LA01HU	Human	ELISA, IHC	YWHAG	CSB-PA890755LA01HU	Human	ELISA, WB, IHC, IF
TGFBR2	CSB-PA026133ESR1HU	Human	ELISA, WB, IHC	YWHAH	CSB-PA880970LA01HU	Human, Mouse	ELISA, WB, IHC
TP53	CSB-PA15549A0Rb	Human, Mouse	ELISA, WB, IHC	YWHAQ	CSB-PA009112LA01HU	Human, Mouse	ELISA, WB, IHC
TP53BP2	CSB-PA026137LA01HU	Human	ELISA, WB, IHC	YWHAZ	CSB-PA009349ESR1HU	Human	ELISA, WB, IHC, IF

© Partial Validation Images of WB



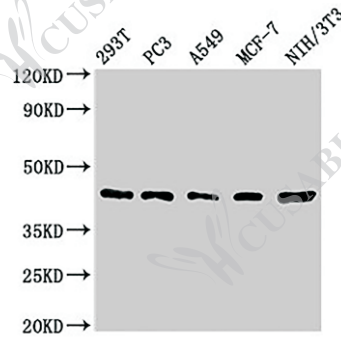
FZD10 Antibody
CSB-PA891782LA01HU

Positive WB detected in: A549 whole cell lysate, HeLa whole cell lysate, HepG2 whole cell lysate, MCF-7 whole cell lysate
All lanes: FZD10 antibody at 3ug/ml
Secondary
Goat polyclonal to rabbit IgG at 1/50000 dilution
Predicted band size: 66 kDa
Observed band size: 66 kDa



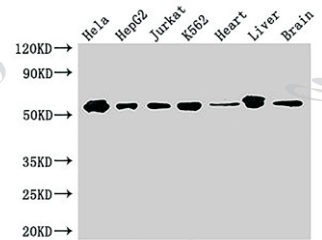
PARD6A Antibody
CSB-PA878839LA01HU

Positive WB detected in: HepG2 whole cell lysate, A549 whole cell lysate, Mouse stomach tissue, Mouse lung tissue
All lanes: PARD6A antibody at 2.5ug/ml
Secondary
Goat polyclonal to rabbit IgG at 1/50000 dilution
Predicted band size: 38 kDa
Observed band size: 38 kDa



SAV1 Antibody
CSB-PA875672ESR2HU

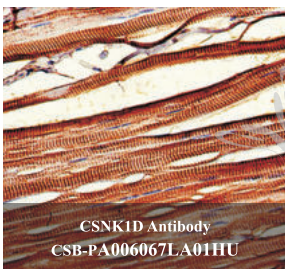
Positive WB detected in: 293T whole cell lysate, PC3 whole cell lysate, A549 whole cell lysate, MCF-7 whole cell lysate, NIH/3T3 whole cell lysate
All lanes: SAV1 antibody at 1.62ug/ml
Secondary
Goat polyclonal to rabbit IgG at 1/50000 dilution
Predicted band size: 45 kDa
Observed band size: 45 kDa



SMAD2 Antibody
CSB-PA15557A0Rb

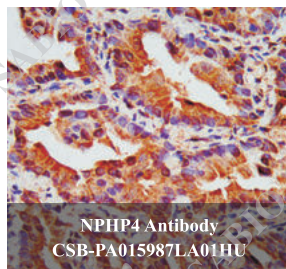
Positive WB detected in: HeLa whole cell lysate, HepG2 whole cell lysate, Jurkat whole cell lysate, K562 whole cell lysate, Mouse heart tissue, Mouse liver tissue, Mouse brain tissue
All lanes: SMAD2 antibody at 3ug/ml
Secondary
Goat polyclonal to rabbit IgG at 1/50000 dilution
Predicted band size: 53, 49 kDa
Observed band size: 53 kDa

© Partial Validation Images of IHC



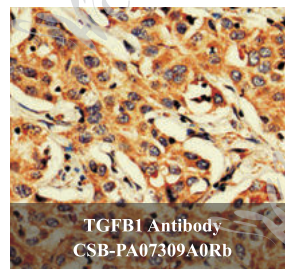
CSNK1D Antibody
CSB-PA006067LA01HU

IHC image of CSB-PA006067LA01HU diluted at 1:1000 and staining in paraffin-embedded human skeletal muscle tissue performed on a Leica BondTM system.



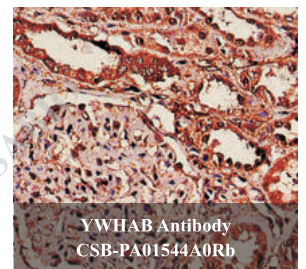
NPHP4 Antibody
CSB-PA015987LA01HU

IHC image of CSB-PA015987LA01HU diluted at 1:500 and staining in paraffin-embedded human lung cancer performed on a Leica BondTM system.



TGFB1 Antibody
CSB-PA07309A0Rb

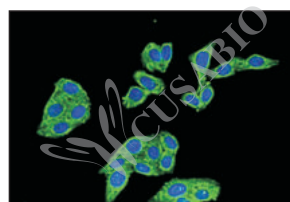
IHC image of CSB-PA07309A0Rb diluted at 1:600 and staining in paraffin-embedded human liver cancer performed on a Leica BondTM system.



YWHAB Antibody
CSB-PA01544A0Rb

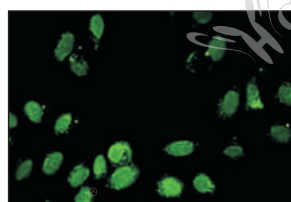
IHC image of CSB-PA01544A0Rb diluted at 1:600 and staining in paraffin-embedded human kidney tissue performed on a Leica BondTM system.

© Partial Validation Images of IF



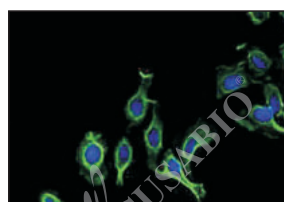
BTRC Antibody
CSB-PA897464LA01HU

Immunofluorescent analysis of HepG2 cells using CSB-PA897464LA01HU at a dilution of 1:100 and Alexa Fluor 488-conjugated AffiniPure Goat Anti-Rabbit IgG(H+L)



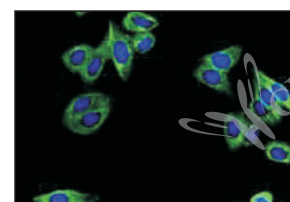
Id2 Antibody
CSB-PA010967LA01HU

Immunofluorescent analysis of HepG2 cells using CSB-PA010967LA01HU at a dilution of 1:100 and Alexa Fluor 488-conjugated AffiniPure Goat Anti-Rabbit IgG(H+L)



PARD6G Antibody
CSB-PA863155LA01HU

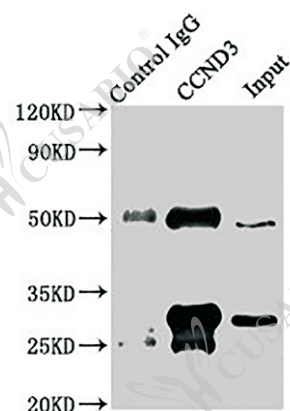
Immunofluorescent analysis of HepG2 cells using CSB-PA863155LA01HU at a dilution of 1:100 and Alexa Fluor 488-conjugated AffiniPure Goat Anti-Rabbit IgG(H+L)



TGFBR1 Antibody
CSB-PA023451LA01HU

Immunofluorescent analysis of HepG2 cells using CSB-PA023451LA01HU at a dilution of 1:100 and Alexa Fluor 488-conjugated AffiniPure Goat Anti-Rabbit IgG(H+L)

© Partial Validation Images of IP



CCND3 Antibody
CSB-PA004814ESR2HU

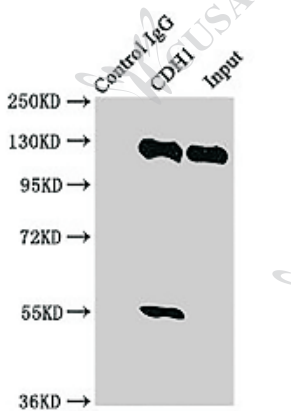
Immunoprecipitating CCND3 in Jurkat whole cell lysate

Lane 1 : Rabbit control IgG instead of CSB-PA004814ESR2HU in Jurkat whole cell lysate.

For western blotting, a HRP-conjugated Protein G antibody was used as the secondary antibody (1/2000)

Lane 2 : CSB-PA004814ESR2HU (5µg) + Jurkat whole cell lysate (500µg)

Lane 3 : Jurkat whole cell lysate (20µg)



CDH1 Antibody
CSB-PA005034MA01HU

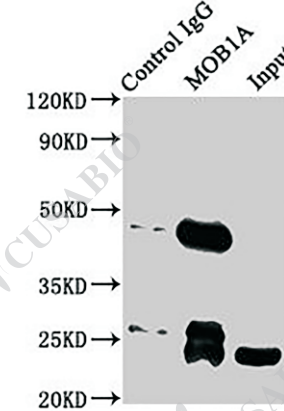
Immunoprecipitating CDH1 in 293 whole cell lysate

Lane 1 : Rabbit control IgG instead of CSB-PA005034MA01HU in HEK293 whole cell lysate.

For western blotting, a HRP-conjugated Protein G antibody was used as the secondary antibody (1/2000)

Lane 2 : CSB-PA005034MA01HU (6µg) + HEK293 whole cell lysate (500µg)

Lane 3 : HEK293 whole cell lysate (20µg)



MOB1A Antibody
CSB-PA872519HA01HU

Immunoprecipitating MOB1A in Jurkat whole cell lysate

Lane 1 : Rabbit control IgG instead of CSB-PA872519HA01HU in Jurkat whole cell lysate.

For western blotting, a HRP-conjugated Protein G antibody was used as the secondary antibody (1/2000)

Lane 2 : CSB-PA872519HA01HU (5µg) + Jurkat whole cell lysate (500µg)

Lane 3 : Jurkat whole cell lysate (20µg)



MOB1B Antibody
CSB-PA762574HA01HU

Immunoprecipitating MOB1B in K562 whole cell lysate

Lane 1 : Rabbit control IgG (1µg) instead of CSB-PA762574HA01HU in K562 whole cell lysate.

For western blotting, a HRP-conjugated Protein G antibody was used as the secondary antibody (1/2000)

Lane 2 : CSB-PA762574HA01HU (6µg) + K562 whole cell lysate (500µg)

Lane 3 : K562 whole cell lysate (10µg)

© Partial Publications For Your Reference

Kim JY.*et al.* Progesterone Receptor Membrane Component 1 suppresses the p53 and Wnt/ β -catenin pathways to promote human pluripotent stem cell self-renewal. *Sci Rep*, 2018.

SOX2 Antibody (CSB-PA16539A0Rb), CASP3 Antibody (CSB-PA05689A0Rb)

Kim JA.*et al.* Magnesium phosphate ceramics incorporating a novel indene compound promote osteoblast differentiation in vitro and bone regeneration in vivo. *Biomaterials*, 2017.

BMP2 Antibody (CSB-PA09419A0Rb), BMP4 Antibody (CSB-PA05799A0Rb), BMP7 Antibody (CSB-PA05805A0Rb)

YutakaMiyamoto.*et al.* Asporin stably expressed in the surface layer of mandibular condylar cartilage and augmented in the deeper layer with age. *Bone Reports*, 2017.

TGFBI Antibody (CSB-PA07309A0Rb)

CUSABIO TECHNOLOGY LLC

Postal Address: 7707 Fannin St., Ste 200-V126, Houston, TX 77054, USA

Tel : 301-363-4651 (Available 9 a.m. to 5 p.m. CST from Monday to Friday)

Email: antibody3@cusabio.com Web: www.cusabio.com

