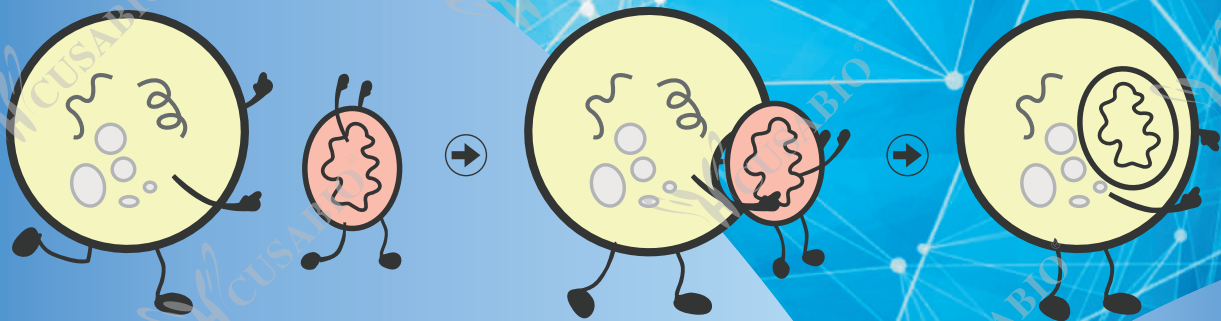


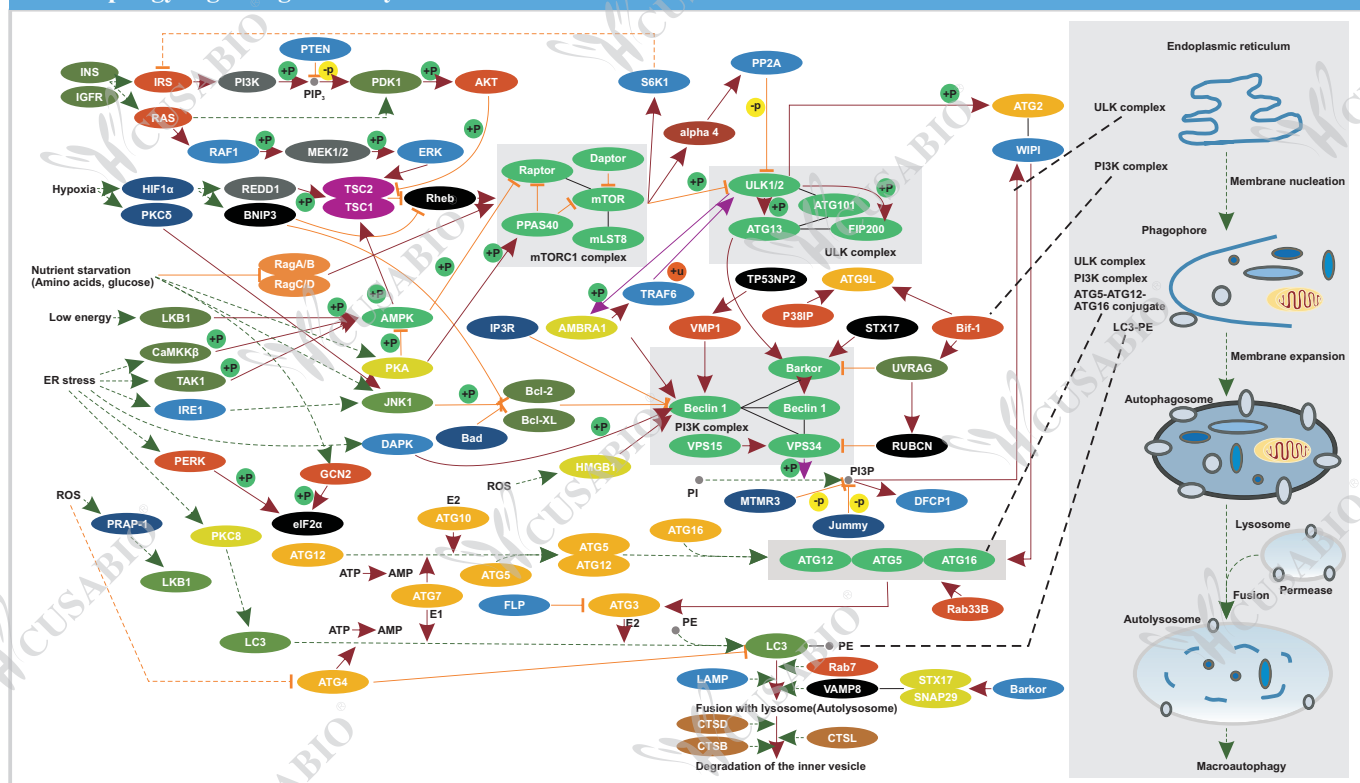


AUTOPHAGY SIGNALING PATHWAY

YOUR GOOD PARTNER IN BIOLOGY RESEARCH



Autophagy Signaling Pathway

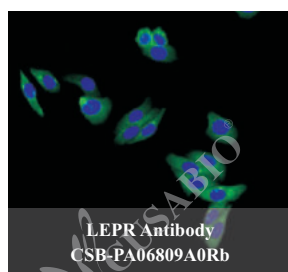


Antibodies for Autophagy Signaling Pathway Research (Partial)

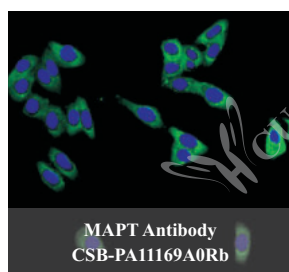
Product Name	Code	Reactivity	Application
ABL1 Antibody	CSB-PA04355A0Rb	Human	ELISA
ABL1/ABL2 (Ab-393/439) Antibody	CSB-PA562429	Human,Mouse	ELISA,WB
ABL1/ABL2 Antibody	CSB-PA008494	Human,Mouse	ELISA,IHC
ABL2 Antibody	CSB-PA119696	Human,Mouse	ELISA,WB,IHC
AKT1S1 Antibody	CSB-PA836185LA01HU	Human	ELISA,WB,IHC
ATG10 Antibody	CSB-PA861988LA01HU	Human	ELISA,IF
ATG12 Antibody	CSB-PA313566	Human	ELISA,IHC
ATG13 Antibody	CSB-PA012203LA01HU	Human	ELISA,WB,IHC
ATG14 Antibody	CSB-PA741052LA01HU	Human	ELISA,WB,IHC,IF
ATG16L1 Antibody	CSB-PA734569LA01HU	Human	ELISA,IHC
ATG16L1 Antibody	CSB-PA734569LA01HU	Human	ELISA,IHC
ATG16L2 Antibody	CSB-PA843310HA01HU	Human	ELISA,IHC,IF
ATG3 Antibody	CSB-PA002288HA01HU	Human	ELISA,WB,IHC
ATG4A Antibody	CSB-PA845174EA01HU	Human,Mouse	ELISA,WB
ATG4B Antibody	CSB-PA002290LA01HU	Human,Mouse	ELISA,WB,IHC,IF
ATG4C Antibody	CSB-PA836199ESR2HU	Human,Mouse	ELISA,WB,IHC
ATG4D Antibody	CSB-PA774797LA01HU	Human	ELISA,WB,IHC,IF
ATG5 Antibody	CSB-PA15499A0Rb	Human	ELISA,IHC,IF
ATG7 Antibody	CSB-PA002294LA01HU	Human	ELISA,WB,IHC,IF
BCL2 (Ab-56) Antibody	CSB-PA187601	Human	ELISA,WB,IHC,IF
BCL2 (Ab-70) Antibody	CSB-PA129411	Human	ELISA,WB,IHC,IF
BCL2 Antibody	CSB-PA12959A0Rb	Human	ELISA,WB,IHC,IF
BCL2L1 (Ab-62) Antibody	CSB-PA923588	Human,Mouse,Rat	ELISA,WB
BCL2L1 Antibody	CSB-PA002613HA01HU	Human	ELISA
BECN1 Antibody	CSB-PA617917LA01HU	Human,Mouse	ELISA,WB,IHC,IF
DRAM1 Antibody	CSB-PA836675LA01HU	Human	ELISA,IHC
LAMP1 Antibody	CSB-PA005240	Human,Rat	ELISA,WB
LAMP2 Antibody	CSB-PA012740EA01HU	Human,Mouse	ELISA,WB,IHC,IF
LAMP3 Antibody	CSB-PA843473	Human	ELISA,WB,IHC
MAP1LC3A Antibody	CSB-PA880971DA01HU	Human	ELISA,IHC
MAP1LC3B Antibody	CSB-PA887936LA01HU	Human	ELISA,IHC
MAP1LC3B2 Antibody	CSB-PA013404LA01HU	Human	ELISA,IF
MAP1LC3C Antibody	CSB-PA887153LA01HU	Human	ELISA,IHC,IF
MAPK1 Antibody	CSB-PA013448LA01HU	Human,Mouse	ELISA,WB,IHC,IF
MAPK14 (Ab-182) Antibody	CSB-PA112086	Human,Mouse,Rat	ELISA,WB
MAPK14 (Ab-322) Antibody	CSB-PA901142	Human,Mouse,Rat	ELISA,WB,IHC,IF
MAPK14 Antibody	CSB-PA013453LA01HU	Human	ELISA,IHC,IF
MAPK3 Antibody	CSB-PA013456LA01HU	Human,Zebrafish	ELISA,WB,IHC,IF
MAPK8 Antibody	CSB-PA16759A0Rb	Human,Mouse	ELISA,WB,IHC,IF
MAPK8/MAPK9/MAPK10 Antibody	CSB-PA030294	Human,Mouse,Rat	ELISA,WB,IHC,IF
NBR1 Antibody	CSB-PA622775ESR2HU	Human	ELISA,IHC
Phospho-ABL1 (T735) Antibody	CSB-PA008492	Human,Mouse,Rat,Monkey	ELISA,WB,IHC
Phospho-ABL1 (Tyr412) Antibody	CSB-PA980598	Human,Mouse	ELISA,IHC,IF
Phospho-ABL1 (Y204) Antibody	CSB-PA008490	Human,Mouse,Rat,Monkey	ELISA,WB,IHC

Phospho-ABL1 (Y245) Antibody	CSB-PA008493	Human,Mouse,Rat	ELISA,WB,IF
Phospho-ABL1/ABL2 (Tyr393/439) Antibody	CSB-PA565211	Human,Mouse	ELISA,WB,IHC,IF
Phospho-ABL1/ABL2 (Y393/439) Antibody	CSB-PA008502	Human,Mouse,Monkey	ELISA,WB,IHC
Phospho-BCL2 (S70) Antibody	CSB-PA000484	Human,Monkey	ELISA,WB,IHC,IP
Phospho-BCL2 (S87) Antibody	CSB-PA040191	Human,Mouse,Rat	ELISA,WB,IHC
Phospho-BCL2 (T56) Antibody	CSB-PA000485	Human	ELISA,WB,IHC,IP,IF
Phospho-BCL2 (T69) Antibody	CSB-PA040190	Human	ELISA,IHC,IF
Phospho-BCL2 (T74) Antibody	CSB-PA040192	Human	ELISA,IHC
Phospho-BCL2L1 (S62) Antibody	CSB-PA040205	Human,Mouse,Rat	ELISA,WB,IHC
Phospho-BCL2L1 (T115) Antibody	CSB-PA040207	Human,Mouse,Rat	ELISA,IHC
Phospho-BCL2L1 (T47) Antibody	CSB-PA040206	Human,Mouse,Rat	ELISA,WB,IHC,IF
Phospho-MAPK1/MAPK3 (Y222/205) Antibody	CSB-PA000658	Human,Mouse,Rat	ELISA,WB
Phospho-MAPK14 (T180) Antibody	CSB-PA000593	Human,Mouse,Rat,Monkey	ELISA,WB,IF
Phospho-MAPK14 (T180/Y182) Antibody	CSB-PA000647	Human,Mouse,Rat	ELISA,WB,IHC
Phospho-MAPK14 (Y182) Antibody	CSB-PA000594	Human,Mouse,Rat	ELISA,WB,IHC
Phospho-MAPK14 (Y323) Antibody	CSB-PA000709	Human,Mouse,Rat	ELISA,WB,IHC
Phospho-MAPK3/MAPK1 (T202) Antibody	CSB-PA000522	Human,Mouse,Rat	ELISA,WB
Phospho-MAPK3/MAPK1 (T202/Y204) Antibody	CSB-PA000749	Human,Mouse,Rat	ELISA,WB,IHC
Phospho-MAPK3/MAPK1 (Y204) Antibody	CSB-PA000523	Human,Mouse,Rat	ELISA,WB,IHC,IF
Phospho-MAPK8/MAPK9/MAPK10 (T183) Antibody	CSB-PA000563	Human,Mouse,Rat	ELISA,WB,IHC,IF
Phospho-MAPK8/MAPK9/MAPK10 (T183/Y185) Antibody	CSB-PA000564	Human,Mouse,Rat	ELISA,WB
Phospho-MAPK8/MAPK9/MAPK10 (Y185) Antibody	CSB-PA000717	Human,Mouse,Rat	ELISA,WB,IHC
Phospho-PIK3R2 (Y464) Antibody	CSB-PA030059	Human,Mouse,Rat	ELISA,WB
Phospho-PRKAA1 (S496) Antibody	CSB-PA953053	Human,Mouse,Rat	ELISA,WB,IHC
Phospho-PRKAA1/PRKAA2 (Ser487) Antibody	CSB-PA261465	Human,Mouse,Rat	ELISA,WB,IHC,IF
Phospho-PRKAA1/PRKAA2 (T183/172) Antibody	CSB-PA477914	Human,Mouse,Rat,Monkey	ELISA,WB,IHC
PIK3C3 Antibody	CSB-PA854108LA01HU	Human	ELISA,WB,IHC
PIK3CB Antibody	CSB-PA017999LA01HU	Human	ELISA,IF
PIK3R2 Antibody	CSB-PA018005LA01HU	Human	ELISA,WB,IHC
PIK3R4 Antibody	CSB-PA858716LA01HU	Human	ELISA,IHC,IF
PRKAA1 (Ab-174/172) Antibody	CSB-PA913725	Human,Mouse,Rat	ELISA,WB,IHC,IF
PRKAA1 Antibody	CSB-PA618759LA01HU	Human,Mouse	ELISA,WB,IHC,IF
PRKAA1/PRKAA2 (Ab-487) Antibody	CSB-PA592613	Human,Mouse,Rat	ELISA,WB,IHC
PRKAA1/PRKAA2 Antibody	CSB-PA555883	Human,Mouse,Rat,Monkey	ELISA,WB,IHC
PRKAA2 Antibody	CSB-PA805325LA01HU	Human,Mouse	ELISA,WB,IHC,IF
RB1CC1 Antibody	CSB-PA855061LA01HU	Human	ELISA,IF
SH3GLB1 Antibody	CSB-PA878084ESR1HU	Human,Mouse	ELISA,WB,IHC
SQSTM1 Antibody	CSB-PA615696LA01HU	Human	ELISA,IHC,IF
TP53INP2 Antibody	CSB-PA812888LA01HU	Human	ELISA,IF
ULK1 Antibody	CSB-PA025612LA01HU	Human	ELISA,IF
ULK2 Antibody	CSB-PA471712	Human,Mouse,Rat	ELISA,WB
ULK3 Antibody	CSB-PA750879ESR1HU	Human	ELISA,IHC
UVRAG Antibody	CSB-PA882187HA01HU	Human	ELISA,WB,IHC,IF
VMP1 Antibody	CSB-PA856940LA01HU	Human	ELISA,WB,IHC
WDFY3 Antibody	CSB-PA025992GA01HU	Human,Mouse,Rat	ELISA,WB

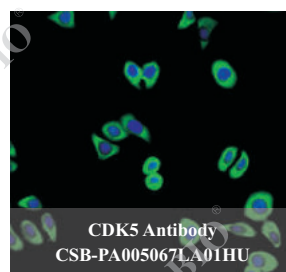
Partial Validation Images of IF



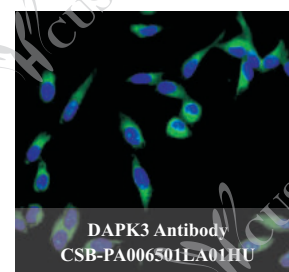
Immunofluorescent analysis of HepG2 cells using CSB-PA06809A0Rb at a dilution of 1:100 and Alexa Fluor 488-conjugated AffiniPure Goat Anti-Rabbit IgG(H+L)



Immunofluorescent analysis of HepG2 cells using CSB-PA11169A0Rb at a dilution of 1:100 and Alexa Fluor 488-conjugated AffiniPure Goat Anti-Rabbit IgG(H+L)

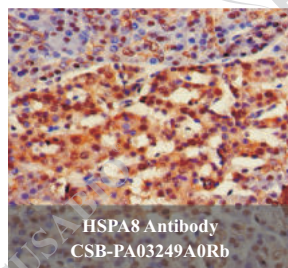


Immunofluorescent analysis of PC-3 cells using CSB-PA005067LA01HU at a dilution of 1:100 and Alexa Fluor 488-conjugated AffiniPure Goat Anti-Rabbit IgG(H+L)

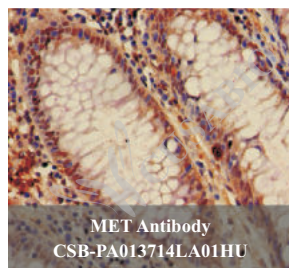


Immunofluorescent analysis of HeLa cells using CSB-PA006501LA01HU at a dilution of 1:100 and Alexa Fluor 488-conjugated AffiniPure Goat Anti-Rabbit IgG(H+L)

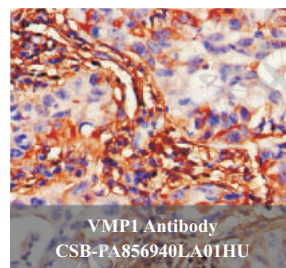
Partial Validation Images of IHC



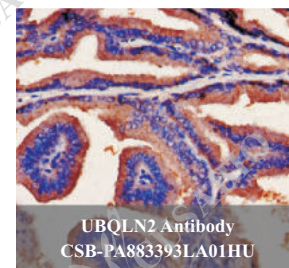
Immunohistochemistry of paraffin-embedded human pancreatic tissue using CSB-PA03249A0Rb at dilution of 1:100



Immunohistochemistry of paraffin-embedded human colon cancer tissue using CSB-PA013714LA01HU at dilution of 1:100



Immunohistochemistry of paraffin-embedded human lung cancer tissue using CSB-PA856940LA01HU at dilution of 1:100



Immunohistochemistry analysis of human prostate tissue using CSB-PA883393LA01HU at dilution of 1:100

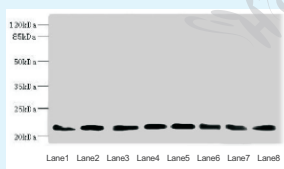
© Partial Validation Images of WB



PLK3 Antibody
CSB-PA880972ESR1HU

Western blot

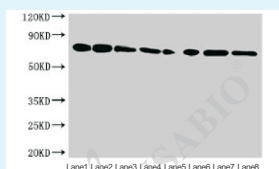
All lanes : PLK3 antibody at 1.2ug/ml
Lane 1 : Rat heart tissue
Lane 2 : HeLa whole cell lysate
Lane 3 : 293T whole cell lysate
Lane 4 : MCF7 whole cell lysate
Lane 5 : Monocytic leukemia cells in mice Macrophages
Secondary
Goat polyclonal to rabbit IgG at 1/10000 dilution
Predicted band size : 72 kDa
Observed band size : 72 kDa



RAB23 Antibody
CSB-PA891960ESR1HU

Western blot

All lanes : RAB23 antibody at 3.88ug/ml
Lane 1 : Mouse ocular tissue
Lane 2 : Rat brain tissue
Lane 3 : Mouse kidney tissue
Lane 4 : Mouse lung tissue
Lane 5 : Mouse brain tissue
Lane 6 : NIH/3T3 whole cell lysate
Lane 7 : MCF7 whole cell lysate
Lane 8 : HeLa whole cell lysate
Secondary
Goat polyclonal to rabbit IgG at 1/10000 dilution
Predicted band size : 27 kDa
Observed band size : 27 kDa



HSPA8 Antibody
CSB-PA03249A0Rb

Western blot

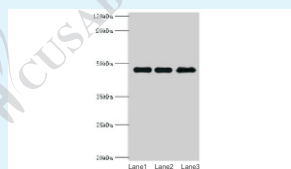
All lanes : HSPA8 antibody at 3.5µg/ml
Lane 1 : HEK293 whole cell lysate
Lane 2 : A549 whole cell lysate
Lane 3 : Colo320 whole cell lysate
Lane 4 : HeLa whole cell lysate
Lane 5 : HepG2 whole cell lysate
Lane 6 : Mouse brain tissue
Lane 7 : Rat brain tissue
Lane 8 : Rat lung tissue
Secondary
Goat polyclonal to rabbit IgG at 1/50000 dilution
Predicted band size : 71,54 kDa
Observed band size : 71 kDa



KAT8 Antibody
CSB-PA17859A0Rb

Western Blot

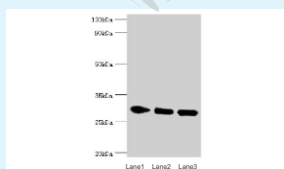
All lanes : KAT8 antibody at 3µg/ml
Lane 1 : MCF-7 whole cell lysate
Lane 2 : HepG2 whole cell lysate
Lane 3 : Jurkat whole cell lysate
Lane 4 : Mouse liver tissue
Lane 5 : Rat liver tissue
Secondary
Goat polyclonal to rabbit IgG at 1/50000 dilution
Predicted band size : 53 kDa
Observed band size : 53 kDa



PIP4K2B Antibody
CSB-PA018023ESR2HU

Western blot

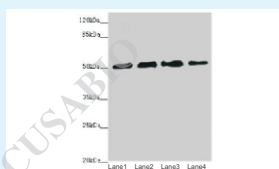
All lanes : Phosphatidylinositol 5-phosphate 4-kinase type-2 beta antibody at 10ug/ml
Lane 1 : HeLa whole cell lysate
Lane 2 : MCF-7 whole cell lysate
Lane 3 : 293T whole cell lysate
Secondary
Goat polyclonal to rabbit at 1/10000 dilution
Predicted band size : 48,33 kDa
Observed band size : 48 kDa



PRKAB2 Antibody
CSB-PA527326ESR1HU

Western blot

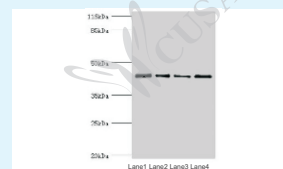
All lanes : PRKAB2 antibody at 5ug/ml
Lane 1 : rat brain tissue
Lane 2 : mouse heart tissue
Lane 3 : mouse gonad tissue
Secondary
Goat polyclonal to rabbit at 1/10000 dilution
Predicted band size : 31,22 kDa
Observed band size : 31 kDa



CALCOCO2 Antibody
CSB-PA614394ESR1HU

Western blot

All lanes : CALCOCO2 antibody at 3.36ug/ml
Lane 1 : HeLa whole cell lysate
Lane 2 : Jurkat whole cell lysate
Lane 3 : 293T whole cell lysate
Lane 4 : Raji whole cell lysate
Secondary
Goat polyclonal to Rabbit IgG at 1/10000 dilution
Predicted band size : 53,48,55,56,44 kDa
Observed band size : 53 kDa

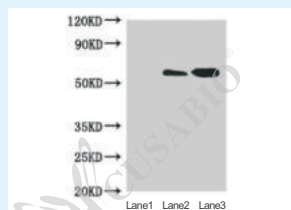


TP53 Antibody
CSB-PA07889A0Rb

Western blot

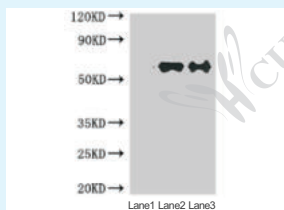
All lanes : Cellular tumor antigen p53 antibody at 2ug/ml
Lane 1 : A431 whole cell lysate
Lane 2 : 293T whole cell lysate
Lane 3 : MCF-7 whole cell lysate
Lane 4 : MM231 whole cell lysate
Secondary
Goat polyclonal to rabbit at 1/10000 dilution
Predicted band size : 44,38,39,40,34,35,30,24,25 kDa
Observed band size : 44 kDa

© Partial Validation Images of IP-ChIP



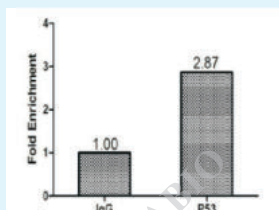
CALCOCO2 Antibody
CSB-PA614394ESR1HU

Immunoprecipitating CALCOCO2 in HeLa whole cell lysate
Lane 1 : Rabbit monoclonal IgG(1ug)instead of CSB-PA614394ESR1HU in HeLa whole cell lysate.
For western blotting, a HRP-conjugated anti-rabbit IgG, specific to the non-reduced form of IgG was used as the Secondary antibody (1/50000)
Lane 2 : CSB-PA614394ESR1HU(4ug)+ HeLa whole cell lysate(500ug)
Lane 3 : HeLa whole cell lysate (20ug)



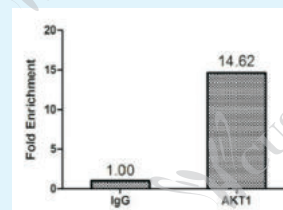
MTDH Antibody
CSB-PA773028ESR2HU

Immunoprecipitating MTDH in HeLa whole cell lysate
Lane 1 : Rabbit monoclonal IgG(1ug)instead of CSB-PA773028ESR2HU in HeLa whole cell lysate.
For western blotting, a HRP-conjugated anti-rabbit IgG, specific to the non-reduced form of IgG was used as the Secondary antibody (1/50000)
Lane 2 : CSB-PA773028ESR2HU(4ug)+ HeLa whole cell lysate(500ug)
Lane 3 : HeLa whole cell lysate (20ug)



TP53 Antibody
CSB-PA07889A0Rb

Chromatin Immunoprecipitation HeLa(1.2*10⁶)were cross-linked with formaldehyde, sonicated, and immunoprecipitated with 4ug anti-p53 or a control normal rabbit IgG . The resulting ChIP DNA was quantified using real-time PCR with primers(CSB-PP07889HU) against the P21 promoter.



AKT1 Antibody
CSB-PA15905A0Rb

Chromatin Immunoprecipitation HeLa(1.1*10⁶)were cross-linked with formaldehyde, sonicated, and immunoprecipitated with 4ug anti-AKT1 or a control normal rabbit IgG . The resulting ChIP DNA was quantified using real-time PCR with primers(CSB-PP15905HU) against the exon-1 of Egr1 promoter.

CUSABIO TECHNOLOGY LLC

Postal Address: 7707 Fannin St., Ste 200-V126, Houston, TX 77054, USA

Tel: 301-363-4651 (Available 9 a.m. to 5 p.m. CST from Monday to Friday)

Email: antibody3@cusabio.com **Web:** www.cusabio.com

