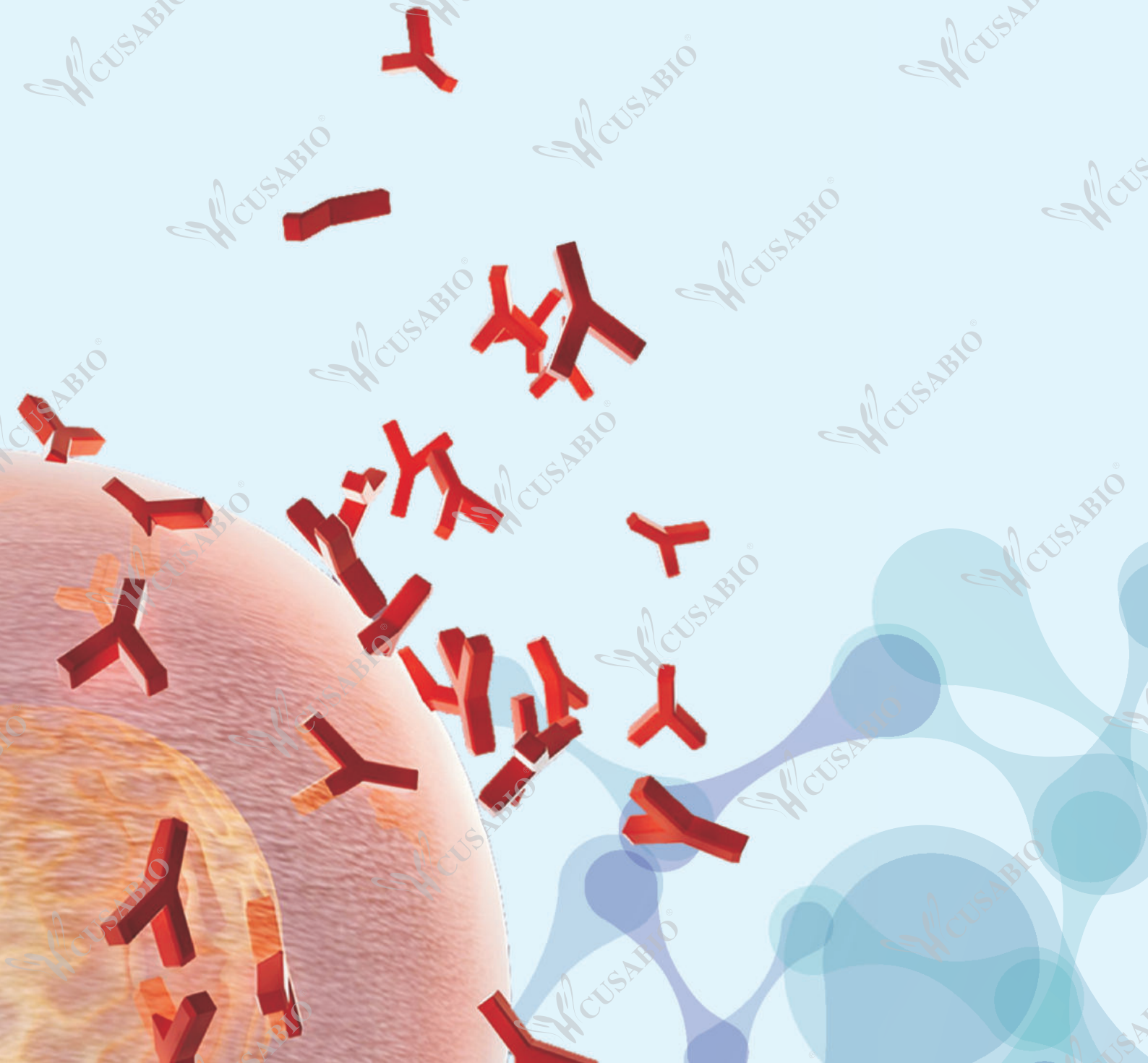


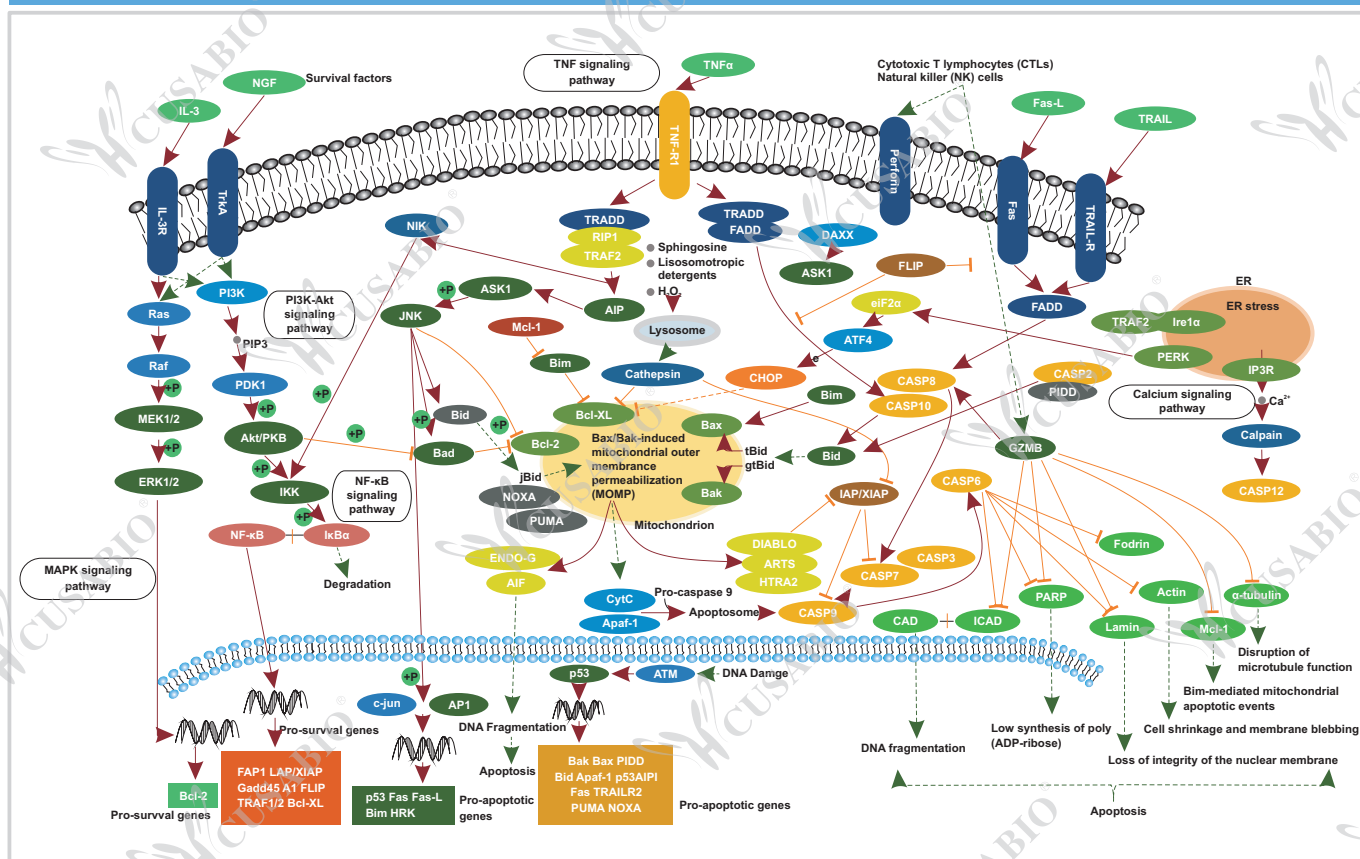


# APOPTOSIS SIGNALING PATHWAY

YOUR GOOD PARTNER IN BIOLOGY RESEARCH



## Apoptosis Signaling Pathway



## Antibodies for Apoptosis Signaling Pathway Research (Partial)

Product Name	Code	Reactivity	Application
DFFA Antibody	CSB-PA006737DSR2HU	Human	ELISA, WB, IHC, IP
HTRA2 Antibody	CSB-PA010902EA01HU	Human	ELISA, WB, IHC, IP
TIA1 Antibody	CSB-PA023527DSR1HU	Human	ELISA, WB, IHC, IP
E2F1 Antibody	CSB-PA007340LA01HU	Human	ELISA, WB, IHC, IP
AIMP1 Antibody	CSB-PA618638DSR1HU	Human	ELISA, WB, IHC, IP
TARDBP Antibody	CSB-PA621652ESR1HU	Human, Mouse	ELISA, WB, IHC, IP
PDCD4 Antibody	CSB-PA703610DSR2HU	Human	ELISA, WB, IHC, IP
EIF3M Antibody	CSB-PA745333DSR1HU	Human, Mouse	ELISA, WB, IHC, IP
EIF3K Antibody	CSB-PA866204ESR1HU	Human	ELISA, WB, IHC, IP
CDK2 Antibody	CSB-PA005061LA01HU	Human	ELISA, WB, IHC, IF, IP
TRADD Antibody	CSB-PA621879EA01HU	Human, Rat	ELISA, WB, IHC, IF, IP
FIS1 Antibody	CSB-PA008684LA01HU	Human, Mouse	ELISA, WB, IHC, IF, IP
SGK1 Antibody	CSB-PA021189LA01HU	Human, Mouse	ELISA, WB, IHC, IF
HAX1 Antibody	CSB-PA03515A0Rb	Human	ELISA, WB, IHC, IF
TNFRSF10A Antibody	CSB-PA023964LA01HU	Human	ELISA, WB, IHC, IF
DDX3X Antibody	CSB-PA006621LA01HU	Human, Mouse, Rat	ELISA, WB, IHC, IF
AIM2 Antibody	CSB-PA001499LA01HU	Human	ELISA, WB, IHC, IF
IFIT3 Antibody	CSB-PA011022HA01HU	Human	ELISA, WB, IHC, IF
IKBKB Antibody	CSB-PA16309A0Rb	Human	ELISA, WB, IHC, IF
XPO1 Antibody	CSB-PA026221LA01HU	Human, Mouse	ELISA, WB, IHC, IF
MAPK13 Antibody	CSB-PA013452LA01HU	Human	ELISA, WB, IHC, IF
TOX3 Antibody	CSB-PA024075LA01HU	Human, Mouse	ELISA, WB, IHC, IF
CIDEA Antibody	CSB-PA005431LA01HU	Human, Mouse	ELISA, WB, IHC, IF
ROCK2 Antibody	CSB-PA020059ESR1HU	Human, Rat	ELISA, WB, IHC, IF
PAK3 Antibody	CSB-PA017407LA01HU	Human, Mouse	ELISA, WB, IHC, IF
CELF2 Antibody	CSB-PA006217LA01HU	Human	ELISA, WB, IHC, IF
WISP1 Antibody	CSB-PA026119LA01HU	Human, Mouse	ELISA, WB, IHC, IF
MBP Antibody	CSB-PA013551LA01HU	Human, Mouse, Rat	ELISA, WB, IHC, IF
GAPDH Antibody	CSB-PA00025A0Rb	Human, Mouse, Rat, Zebrafish	ELISA, WB, IHC, IF
APP Antibody	CSB-PA07179A0Rb	Human, Mouse	ELISA, WB, IHC, IF
KRT18 Antibody	CSB-PA10629A0Rb	Human, Zebrafish	ELISA, WB, IHC, IF
CTSB Antibody	CSB-PA06974A0Rb	Human, Mouse	ELISA, WB, IHC, IF
YES1 Antibody	CSB-PA026253LA01HU	Human	ELISA, WB, IHC, IF
LGALS1 Antibody	CSB-PA012882HA01HU	Human	ELISA, WB, IHC, IF
HMGB1 Antibody	CSB-PA010553YA01HU	Human, Mouse	ELISA, WB, IHC, IF
IFIT2 Antibody	CSB-PA011021LA01HU	Human, Rat	ELISA, WB, IHC, IF
IFIT1 Antibody	CSB-PA011018LA01HU	Human, Mouse, Rat	ELISA, WB, IHC, IF
BCL2 Antibody	CSB-PA12959A0Rb	Human, Rat	ELISA, WB, IHC, IF
MAPT Antibody	CSB-PA11169A0Rb	Human, Mouse	ELISA, WB, IHC, IF
ODC1 Antibody	CSB-PA00535A0Rb	Human	ELISA, WB, IHC, IF
IDO1 Antibody	CSB-PA010996HA01HU	Human	ELISA, WB, IHC, IF
RPA2 Antibody	CSB-PA01555A0Rb	Human	ELISA, WB, IHC, IF

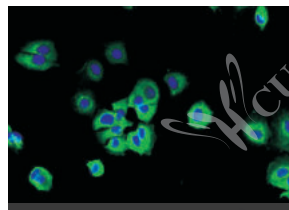
PECAM1 Antibody	CSB-PA017767LA01HU	Human, Mouse, Rat	ELISA, WB, IHC, IF
ITGAL Antibody	CSB-PA011875LA01HU	Human	ELISA, WB, IHC, IF
EPHA1 Antibody	CSB-PA007720LA01HU	Human, Mouse	ELISA, WB, IHC, IF
CBL Antibody	CSB-PA004578LA01HU	Human	ELISA, WB, IHC, IF
PAX3 Antibody	CSB-PA017489HA01HU	Human	ELISA, WB, IHC, IF
MAPK3 Antibody	CSB-PA013456LA01HU	Human, Mouse, Rat, Zebrafish	ELISA, WB, IHC, IF
MAPK1 Antibody	CSB-PA013448LA01HU	Human, Mouse	ELISA, WB, IHC, IF
PRDX5 Antibody	CSB-PA018658ESR1HU	Human, Mouse	ELISA, WB, IHC, IF
YWHAB Antibody	CSB-PA01544A0Rb	Human, Mouse, Rat, Zebrafish	ELISA, WB, IHC, IF
FCGR2B Antibody	CSB-PA10839A0Rb	Human, Mouse	ELISA, WB, IHC, IF
ARRB2 Antibody	CSB-PA002135LA01HU	Human, Rat	ELISA, WB, IHC, IF
NF2 Antibody	CSB-PA015741LA01HU	Human, Mouse	ELISA, WB, IHC, IF
TGFBR1 Antibody	CSB-PA023451LA01HU	Human	ELISA, WB, IHC, IF
MLH1 Antibody	CSB-PA17009A0Rb	Human, Mouse	ELISA, WB, IHC, IF
ACAA2 Antibody	CSB-PA001118LA01HU	Human, Mouse, Rat	ELISA, WB, IHC, IF
MAPK8 Antibody	CSB-PA16759A0Rb	Human, Mouse	ELISA, WB, IHC, IF
MAP2K4 Antibody	CSB-PA013413LA01HU	Human	ELISA, WB, IHC, IF
CASP4 Antibody	CSB-PA004549LA01HU	Human, Mouse	ELISA, WB, IHC, IF
CXCR3 Antibody	CSB-PA006253LA01HU	Human	ELISA, WB, IHC, IF
BCAP31 Antibody	CSB-PA03425A0Rb	Human	ELISA, WB, IHC, IF
P2RX1 Antibody	CSB-PA017319LA01HU	Human, Mouse	ELISA, WB, IHC, IF
DAD1 Antibody	CSB-PA03124A0Rb	Human	ELISA, WB, IHC, IF
YWHAZ Antibody	CSB-PA01459A0Rb	Human, Mouse	ELISA, WB, IHC, IF
DYNLL1 Antibody	CSB-PA01284A0Rb	Human	ELISA, WB, IHC, IF
CSNK2A1 Antibody	CSB-PA006072LA01HU	Human	ELISA, WB, IHC, IF
CDK5 Antibody	CSB-PA005067LA01HU	Human, Mouse	ELISA, WB, IHC, IF
IFITM2 Antibody	CSB-PA011025LA01HU	Human	ELISA, WB, IHC, IF
BTX Antibody	CSB-PA002867LA01HU	Human, Mouse	ELISA, WB, IHC, IF
MCL1 Antibody	CSB-PA03829A0Rb	Human	ELISA, WB, IHC, IF
FOXO1 Antibody	CSB-PA16019A0Rb	Human, Mouse	ELISA, WB, IHC, IF
PSMD2 Antibody	CSB-PA619755LA01HU	Human	ELISA, WB, IHC, IF
SLAMF1 Antibody	CSB-PA614403LA01HU	Human	ELISA, WB, IHC, IF
IKZF1 Antibody	CSB-PA621668HA01HU	Human	ELISA, WB, IHC, IF
BECN1 Antibody	CSB-PA617917LA01HU	Human, Mouse	ELISA, WB, IHC, IF
IRF3 Antibody	CSB-PA011818LA01HU	Human, Mouse	ELISA, WB, IHC, IF
CASP8 Antibody	CSB-PA18109A0Rb	Human	ELISA, WB, IHC, IF
PDCD1 Antibody	CSB-PA619964LA01HU	Human, Mouse	ELISA, WB, IHC, IF
PEA15 Antibody	CSB-PA621865DSR1HU	Human, Mouse	ELISA, WB, IHC, IF
ADRM1 Antibody	CSB-PA001396HA01HU	Human, Mouse	ELISA, WB, IHC, IF
STEAP3 Antibody	CSB-PA717655LA01HU	Human	ELISA, WB, IHC, IF
DRAM2 Antibody	CSB-PA866601ESR2HU	Human, Mouse	ELISA, WB, IHC, IF
SLC30A10 Antibody	CSB-PA747695LA01HU	Human, Mouse	ELISA, WB, IHC, IF
MAEA Antibody	CSB-PA013310LA01HU	Human	ELISA, WB, IHC, IF
RBBP6 Antibody	CSB-PA768776LA01HU	Human, Mouse	ELISA, WB, IHC, IF
SLFN11 Antibody	CSB-PA021760LA01HU	Human, Mouse	ELISA, WB, IHC, IF
ATG4D Antibody	CSB-PA774797LA01HU	Human, Mouse	ELISA, WB, IHC, IF
PIM3 Antibody	CSB-PA771444LA01HU	Human, Mouse	ELISA, WB, IHC, IF

### © Partial Validation Images of IF



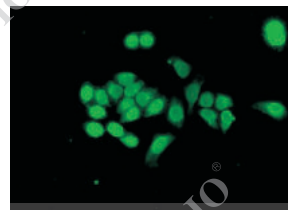
**CAMLG Antibody**  
CSB-PA004475LA01HU

Immunofluorescent analysis of HepG2 cells using CSB-PA004475LA01HU at a dilution of 1:100 and Alexa Fluor 488-conjugated AffiniPure Goat Anti-Rabbit IgG (H+L)



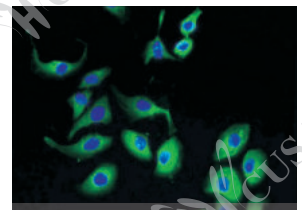
**S1PR3 Antibody**  
CSB-PA859932LA01HU

Immunofluorescent analysis of MCF-7 cells using CSB-PA859932LA01HU at a dilution of 1:100 and Alexa Fluor 488-conjugated AffiniPure Goat Anti-Rabbit IgG (H+L)



**NUPR1 Antibody**  
CSB-PA527662LA01HU

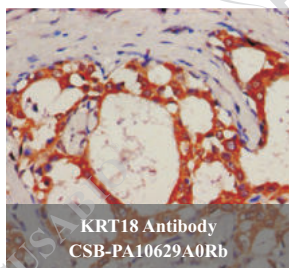
Immunofluorescent analysis of PC3 cells using CSB-PA527662LA01HU at a dilution of 1:100 and Alexa Fluor 488-conjugated AffiniPure Goat Anti-Rabbit IgG (H+L)



**FATE1 Antibody**  
CSB-PA839274LA01HU

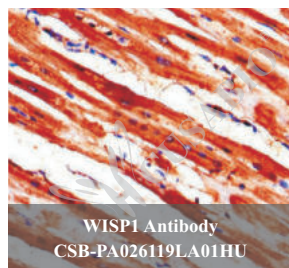
Immunofluorescent analysis of A549 cells using CSB-PA839274LA01HU at a dilution of 1:100 and Alexa Fluor 488-conjugated AffiniPure Goat Anti-Rabbit IgG (H+L)

### © Partial Validation Images of IHC



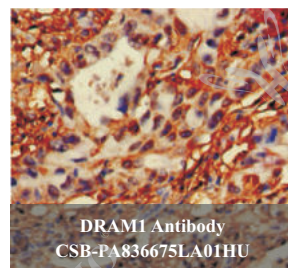
**KRT18 Antibody**  
CSB-PA10629A0Rb

Immunohistochemistry analysis of human breast cancer using CSB-PA10629A0Rb at dilution of 1:100



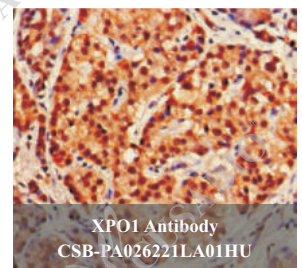
**WISP1 Antibody**  
CSB-PA026119LA01HU

Immunohistochemistry of paraffin-embedded human heart tissue using CSB-PA026119LA01HU at dilution of 1:100



**DRAM1 Antibody**  
CSB-PA836675LA01HU

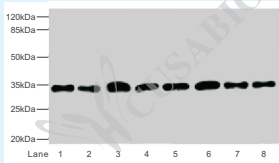
Immunohistochemistry of paraffin-embedded human lung cancer using CSB-PA836675LA01HU at dilution of 1:100



**XPO1 Antibody**  
CSB-PA026221LA01HU

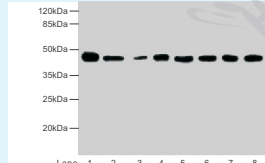
Immunohistochemistry of paraffin-embedded human pancreatic tissue using CSB-PA026221LA01HU at dilution of 1:100

## © Partial Validation Images of WB



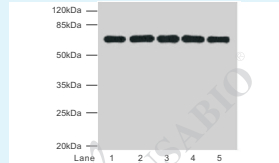
**TMBIM1 Antibody**  
CSB-PA853376LA01HU

Western blot  
All lanes: TMBIM1 antibody at 8 ug/ml  
Lane 1: U251 whole cell lysate  
Lane 2: K562 whole cell lysate  
Lane 3: A549 whole cell lysate  
Lane 4: MCF7 whole cell lysate  
Lane 5: Mouse lung tissue  
Lane 6: Mouse liver tissue  
Lane 7: Mouse kidney tissue  
Lane 8: Human placenta tissue  
Secondary  
Goat polyclonal to Rabbit IgG at 1/10000 dilution  
Predicted band size: 35 kDa  
Observed band size: 35 kDa



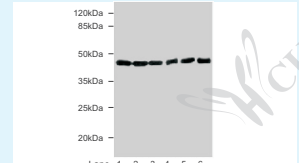
**ACTL6A Antibody**  
CSB-PA001236ESR2HU

Western blot  
All lanes: ACTL6A antibody at 4 ug/ml  
Lane 1: Mouse thymus tissue  
Lane 2: Mouse spleen tissue  
Lane 3: Mouse heart tissue  
Lane 4: Jurkats whole cell lysate  
Lane 5: K562 whole cell lysate  
Lane 6: Hela whole cell lysate  
Lane 7: A549 whole cell lysate  
Lane 8: MCF-7 whole cell lysate  
Secondary  
Goat polyclonal to rabbit at 1/10000 dilution  
Predicted band size: 48, 44 kDa  
Observed band size: 48 kDa



**PLK1 Antibody**  
CSB-PA018193LA01HU

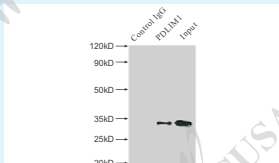
Western blot  
All lanes: PLK1 antibody at 3 ug/ml  
Lane 1: A375 whole cell lysate  
Lane 2: Colo320 whole cell lysate  
Lane 3: Human placenta tissue  
Lane 4: Hela whole cell lysate  
Lane 5: A431 whole cell lysate  
Secondary  
Goat polyclonal to Rabbit IgG at 1/10000 dilution  
Predicted band size: 68 kDa  
Observed band size: 68 kDa



**EIF3M Antibody**  
CSB-PA745333DSR1HU

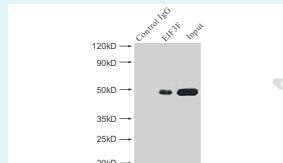
Western blot  
All lanes: EIF3M antibody at 2.02 ug/ml  
Lane 1: Hela whole cell lysate  
Lane 2: A549 whole cell lysate  
Lane 3: Mouse gonadal tissue  
Lane 4: Human placenta tissue  
Lane 5: Mouse stomach tissue  
Lane 6: Mouse brain tissue  
Secondary  
Goat polyclonal to rabbit IgG at 1/10000 dilution  
Predicted band size: 43, 28 kDa  
Observed band size: 43 kDa

## © Partial Validation Images of IP



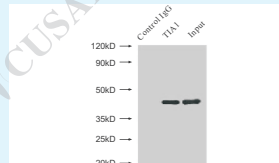
**CDK2 Antibody**  
CSB-PA005061LA01HU

Immunoprecipitating CDK2 in Hela whole cell lysate  
Lane 1: Rabbit monoclonal IgG (1 ug) instead of CSB-PA005061LA01HU in Hela whole cell lysate.  
For western blotting, a HRP-conjugated light chain specific antibody was used as the Secondary antibody (1/50000)  
Lane 2: CSB-PA005061LA01HU (4 ug) + Hela whole cell lysate (500 ug)  
Lane 3: Hela whole cell lysate (20 ug)



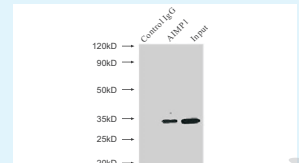
**EIF3F Antibody**  
CSB-PA007535ESR2HU

Immunoprecipitating EIF3F in Jurkat whole cell lysate  
Lane 1: Rabbit monoclonal IgG (1 ug) instead of CSB-PA007535ESR2HU in Jurkat whole cell lysate.  
For western blotting, a HRP-conjugated light chain specific antibody was used as the Secondary antibody (1/50000)  
Lane 2: CSB-PA007535ESR2HU (4 ug) + Jurkat whole cell lysate (500 ug)  
Lane 3: Jurkat whole cell lysate (20 ug)



**TIA1 Antibody**  
CSB-PA023527DSR1HU

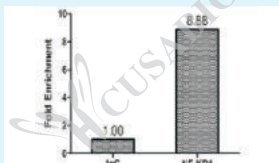
Immunoprecipitating TIA1 in Hela whole cell lysate  
Lane 1: Rabbit monoclonal IgG (1 ug) instead of CSB-PA023527DSR1HU in Hela whole cell lysate.  
For western blotting, a HRP-conjugated anti-rabbit IgG, specific to the non-reduced form of IgG was used as the Secondary antibody (1/50000)  
Lane 2: CSB-PA023527DSR1HU (4 ug) + Hela whole cell lysate (500 ug)  
Lane 3: Hela whole cell lysate (20 ug)



**AIMP1 Antibody**  
CSB-PA618638DSR1HU

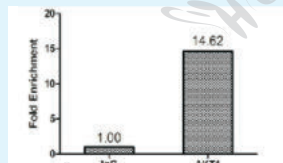
Immunoprecipitating AIMP1 in HepG2 whole cell lysate  
Lane 1: Rabbit monoclonal IgG (1 ug) instead of CSB-PA618638DSR1HU in HepG2 whole cell lysate.  
For western blotting, a HRP-conjugated anti-rabbit IgG, specific to the non-reduced form of IgG was used as the Secondary antibody (1/50000)  
Lane 2: CSB-PA618638DSR1HU (4 ug) + HepG2 whole cell lysate (500 ug)  
Lane 3: HepG2 whole cell lysate (20 ug)

## © Partial Validation Images of ChIP



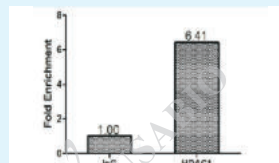
**NFKB1 Antibody**  
CSB-PA10354A0Rb

Chromatin Immunoprecipitation Hela ( $1.1 \times 10^7$ ) were cross-linked with formaldehyde, sonicated, and immunoprecipitated with 4 ug anti-NFKB1 or a control normal rabbit IgG . The resulting ChIP DNA was quantified using real-time PCR with primers (CSB-PP10354HU) against the Ikb promoter.



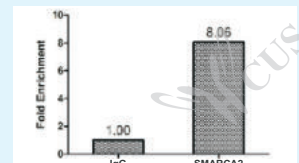
**AKT1 Antibody**  
CSB-PA15905A0Rb

Chromatin Immunoprecipitation Hela ( $1.1 \times 10^7$ ) were cross-linked with formaldehyde, sonicated, and immunoprecipitated with 4 ug anti-AKT1 or a control normal rabbit IgG . The resulting ChIP DNA was quantified using real-time PCR with primers (CSB-PP15905HU) against the exon-1 of Egr1 promoter.



**HDAC1 Antibody**  
CSB-PA17869A0Rb

Chromatin Immunoprecipitation MCF7 ( $1.1 \times 10^7$ ) were cross-linked with formaldehyde, sonicated, and immunoprecipitated with 4 ug anti-HDAC1 or a control normal rabbit IgG . The resulting ChIP DNA was quantified using real-time PCR with primers (CSB-PP17869HU) against the P21 promoter.



**SMARCA2 Antibody**  
CSB-PA021799LA01HU

Chromatin Immunoprecipitation Hela ( $1.1 \times 10^7$ ) were cross-linked with formaldehyde, sonicated, and immunoprecipitated with 4 ug anti-BRM or a control normal rabbit IgG . The resulting ChIP DNA was quantified using real-time PCR with primers (CSB-PP021799HU) against the ESR1 pS2 promoter.

**CUSABIO TECHNOLOGY LLC**

Postal Address: 7707 Fannin St., Ste 200-V126, Houston, TX 77054, USA

Tel : 301-363-4651 (Available 9 a.m. to 5 p.m. CST from Monday to Friday)

Email: antibody3@cusabio.com Web: www.cusabio.com

