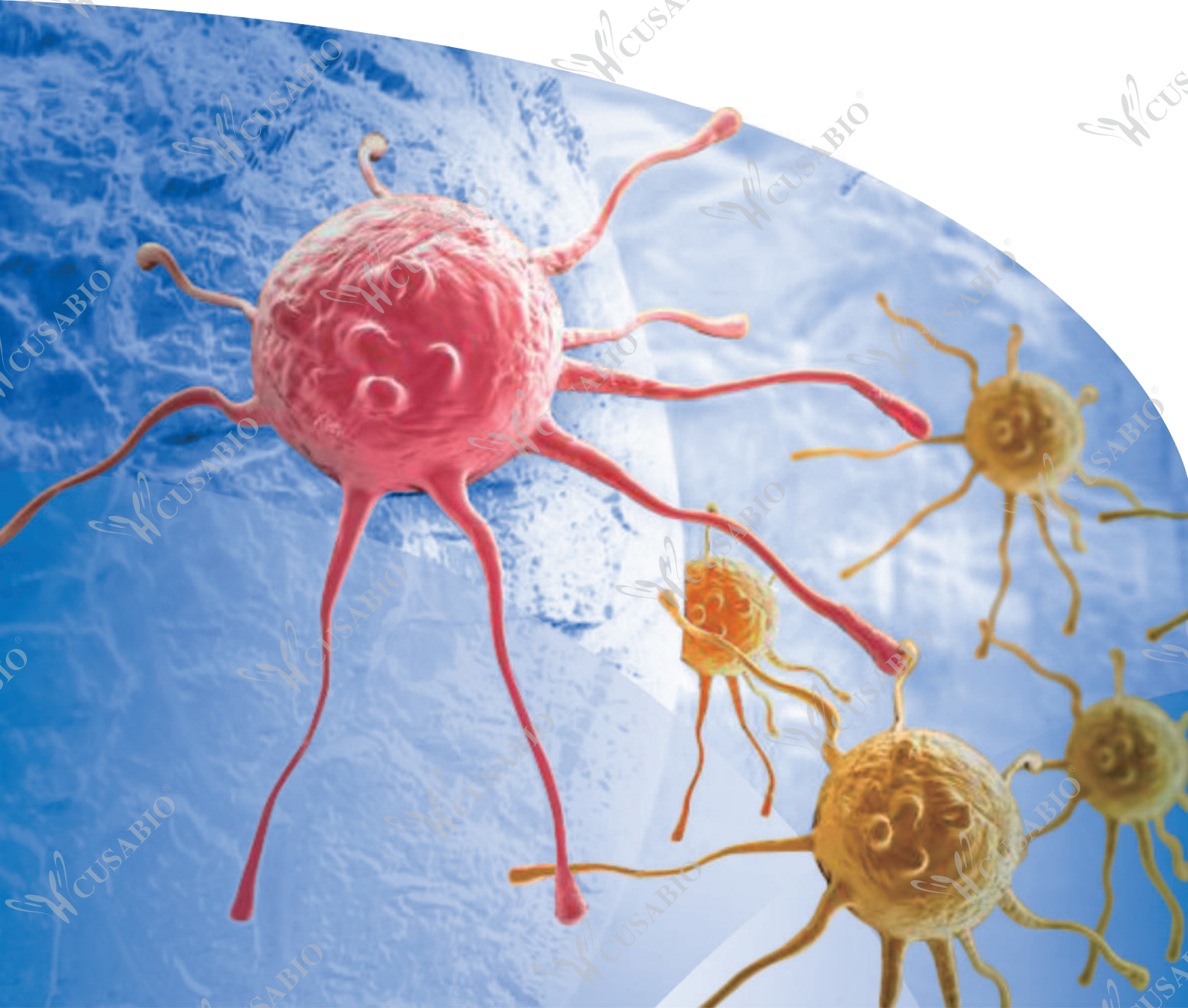


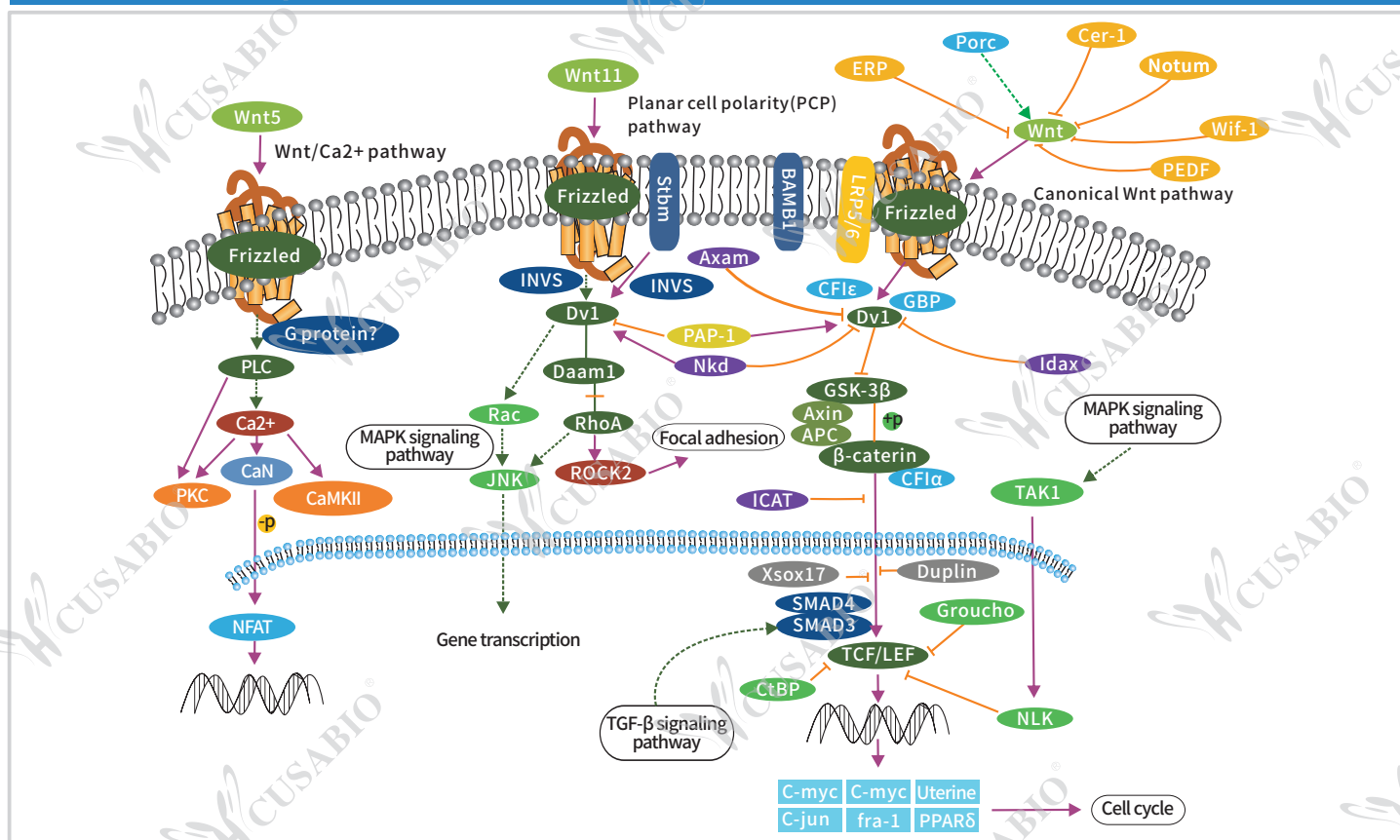


Wnt SIGNALING PATHWAY

YOUR GOOD PARTNER IN BIOLOGY RESEARCH



© Wnt Signaling Pathway

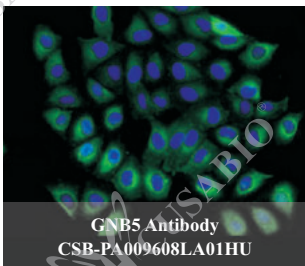


©CUSABIO Antibodies for Wnt Signaling Pathway Research (Partial)

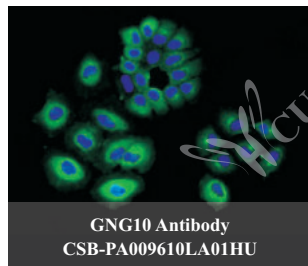
Target	Code	Reactivity	Application	Target	Code	Reactivity	Application
2-hydroxyisobutyryl-HIST1H4A (K16)	CSB-PA0104290A16hibHU	Human, Rat	ELISA, WB, IF, IP, ChIP	LEF1	CSB-PA012856LA01HU	Human	ELISA, IHC, IF
Acetyl-HIST1H2BC (K20)	CSB-PA0104030A20acHU	Human, Rat	ELISA, WB, ICC, IF, IP, ChIP	LGR4	CSB-PA883618LA01HU	Human	ELISA, IHC, IF
Acetyl-HIST1H3A (K27)	CSB-PA0104180A27acHU	Human, Mouse, Rat	ELISA, WB, IHC, IF, IP, ChIP	LGR5	CSB-PA012906LA01HU	Human	ELISA, IHC, IF
Acetyl-HIST1H4A (K31)	CSB-PA0104290A31acHU	Human, Rat	ELISA, WB, ICC, IF, ChIP	LGR6	CSB-PA884515LA01HU	Human	ELISA, WB, IHC
AKT1	CSB-PA15905A0RB	Human	ELISA, WB, IHC, IF	Mono-methyl-HIST1H2BC (K12)	CSB-PA0104030A12me1HU	Human, Mouse, Rat	ELISA, WB, ICC, ChIP
AKT2	CSB-PA15919A0Rb	Human, Rat	ELISA, WB, IHC, IF	MOV10	CSB-PA862068LA01HU	Human	ELISA, WB, IHC
AP2M1	CSB-PA00625A0Rb	Human	ELISA, WB, IHC	PARD6A	CSB-PA878839LA01HU	Human, Mouse	ELISA, WB, IF
AP2S1	CSB-PA02604A0Rb	Human	ELISA, IHC, IF	PDE6A	CSB-PA2109ESR2HU	Human, Mouse	ELISA, WB, IHC
ARRB2	CSB-PA002135LA01HU	Human, Rat	ELISA, WB, IHC, IF	PLCB1	CSB-PA865102LA01HU	Human	ELISA, IHC, IF
ASH2L	CSB-PA883363LA01HU	Human	ELISA, IHC, IF	PPP2CA	CSB-PA018559LA01HU	Human	ELISA, IHC, IF
BCL9	CSB-PA002631LA01HU	Human	ELISA, WB, IHC, IF	PPP2CB	CSB-PA00985A0Rb	Human	ELISA, IHC, IF
BTRC	CSB-PA897464LA01HU	Human	ELISA, WB, IHC, IF	PPP2R1B	CSB-PA830420ESR1HU	Human	ELISA, WB, IHC
Butyryl-HIST1H3A (K23)	CSB-PA0104180A23butHU	Human, Rat	ELISA, WB, IHC, IF, IP, ChIP	PPP2R5E	CSB-PA619075LA01HU	Human	ELISA, IHC, IF
Butyryl-HIST1H3A (K27)	CSB-PA0104180A27butHU	Human, Mouse, Rat	ELISA, WB, IHC, IF, ChIP	PPP3R1	CSB-PA018575LA01HU	Human	ELISA, WB
CREBBP	CSB-PA838805LA01HU	Human	ELISA, IHC, IF	PRKCA	CSB-PA15859A0Rb	Human	ELISA, IHC, IF
Crotonyl-HIST1H2BC (K20)	CSB-PA0104030A20crHU	Human, Mouse, Rat	ELISA, WB, IF, ChIP	PRKCB	CSB-PA15849A0Rb	Human	ELISA, IHC, IF
Crotonyl-HIST1H3A (K4)	CSB-PA0104180A04crHU	Human, Mouse, Rat	ELISA, WB, IP, ChIP	PSMA1	CSB-PA018865LA01HU	Human	ELISA, WB, IHC, IF
Crotonyl-HIST1H3A (K9)	CSB-PA0104180A09crHU	Human, Mouse, Rat	ELISA, WB, ICC, IP, ChIP	PSMA2	CSB-PA018866LA01HU	Human	ELISA, IHC, IF
Crotonyl-HIST1H4A (K5)	CSB-PA0104290A05crHU	Human, Mouse, Rat	ELISA, WB, IF, IP, ChIP	PSMA3	CSB-PA018867LA01HU	Human	ELISA, IHC, IF
CSNK1E	CSB-PA01319A0Rb	Human	ELISA, WB, IHC, IF	PSMA4	CSB-PA018869LA01HU	Human	ELISA, IHC, IF
CSNK1G2	CSB-PA006070ESR2HU	Human, Mouse	ELISA, WB, IHC	PSMA7	CSB-PA01335A0Rb	Human, Mouse	ELISA, WB, IHC, IF
CSNK2A1	CSB-PA006072LA01HU	Human	ELISA, WB, IHC, IF, IP	PSMB2	CSB-PA01385A0Rb	Human	ELISA, IHC, IF
CSNK2A2	CSB-PA526319HA01HU	Human	ELISA, IHC, IF	PSMB3	CSB-PA018880ESR1HU	Human, Mouse	ELISA, WB, IHC
CTBP1	CSB-PA618772ESR1HU	Human	ELISA, WB	PSMB4	CSB-PA01374A0Rb	Human	ELISA, IHC, IF
CTNNB1	CSB-PA00174A0Rb	Human	ELISA, WB, IHC, IF, IP	PSMB5	CSB-PA010083LA01HU	Human	ELISA, IHC, IF
DKK1	CSB-PA06219A0Rb	Human	ELISA, IHC, IF	PSMB7	CSB-PA01345A0Rb	Human	ELISA, IHC, IF
DVL2	CSB-PA007286ESR2HU	Human	ELISA, WB, IHC, IF	PSMB9	CSB-PA018887LA01HU	Human	ELISA, WB, IHC
DVL3	CSB-PA856442LA01HU	Human	ELISA, IHC, IF	PSMC3	CSB-PA018891LA01HU	Human	ELISA, IHC, IF

FZD1	CSB-PA891570LA01HU	Human	ELISA, IHC, IF	PSMC6	CSB-PA018896LA01HU	Human, Mouse, Rat	ELISA, WB, IHC
FZD3	CSB-PA882067ESR1HU	Human, Rat	ELISA, WB, IHC	PSMD10	CSB-PA018899LA01HU	Human	ELISA, IHC, IF
FZD4	CSB-PA890755LA01HU	Human	ELISA, IHC, IF	PSMD11	CSB-PA00575A0Rb	Human	ELISA, IHC, IF
GNB2	CSB-PA009604ESR1HU	Human, Mouse	ELISA, WB, IHC	PSMD2	CSB-PA619755LA01HU	Human	ELISA, WB, IHC, IF
GNB4	CSB-PA862056LA01HU	Human	ELISA, IHC, IF	PSMD7	CSB-PA018912LA01HU	Human	ELISA, IHC, IF
GNB5	CSB-PA009608LA01HU	Human	ELISA, IHC, IF	PSMD9	CSB-PA018914LA01HU	Human	ELISA, IHC, IF
GNG10	CSB-PA009610LA01HU	Human	ELISA, IHC, IF	PSME1	CSB-PA018915DSR1HU	Human, Mouse	ELISA, WB, IHC, IP
GNG11	CSB-PA009611LA01HU	Human	ELISA, IHC, IF	PSME3	CSB-PA13674A0Rb	Human	ELISA, IHC, IF
GNG4	CSB-PA009616LA01HU	Human	ELISA, IHC, IF	PSMF1	CSB-PA852882DSR1HU	Human	ELISA, IHC, IF
GNG5	CSB-PA009617LA01HU	Human	ELISA, IHC, IF	PYGO2	CSB-PA883586LA01HU	Human	ELISA, IHC, IF
GSK3B	CSB-PA009963LA01HU	Human, Mouse	ELISA, WB, IF	RAC1	CSB-PA04329A0Rb	Human	ELISA, IHC, IF
H2AFB1	CSB-PA010091LA01HU	Human	ELISA, IHC, IF	RBBP5	CSB-PA613589DSR1HU	Human	ELISA, WB
H2AFJ	CSB-PA010094DA01HU	Human, Mouse	ELISA, WB, IHC	ROR2	CSB-PA21119A0Rb	Human	ELISA, IHC, IF
H2AFZ (Ab-4)	CSB-PA010100OA04nacHU	Human, Mouse	ELISA, WB, IHC, IF, IP, ChIP	RUNX3	CSB-PA020595LA01HU	Human	ELISA, IHC, IF
HDAC1	CSB-PA17869A0Rb	Human	ELISA, IHC, IF	RUVBL1	CSB-PA896483LA01HU	Human	ELISA, IHC, IF
HIST1H2AC	CSB-PA846293LA01HU	Human	ELISA, IHC, IF	SFRP1	CSB-PA021138LA01HU	Human	ELISA, IHC, IF
HIST1H2BB (Ab-16)	CSB-PA010402OA16nacHU	Human, Mouse, Rat	ELISA, WB, IF, ChIP	SKP1	CSB-PA021360LA01HU	Human, Mouse	ELISA, WB
HIST1H2BB	CSB-PA010402HA01HU	Human	ELISA, IHC, IF	SMURF1	CSB-PA875720LA01HU	Human	ELISA, IHC, IF
HIST1H2BC	CSB-PA01694A0Rb	Human	ELISA, IHC, IF	SOX2	CSB-PA16539A0Rb	Human	ELISA, IHC, IF
HIST1H2BK	CSB-PA010411LA01HU	Human	ELISA, IHC, IF	SOX3	CSB-PA022429LA01HU	Human	ELISA, WB, IHC
HIST1H3A (Ab-10)	CSB-PA010418PA10nphHU	Human, Mouse, Rat	ELISA, WB, IHC, IF, ChIP	SOX9	CSB-PA022437LA01HU	Human	ELISA, IHC, IF
HIST1H3A (Ab-23)	CSB-PA010418OA23nbutHU	Human, Mouse, Rat	ELISA, WB, IHC, IF, ChIP	TNKS	CSB-PA024004LA01HU	Human	ELISA, WB, IHC, IF
HIST1H3A (Ab-27)	CSB-PA010418OA27nbutHU	Human, Mouse, Rat	ELISA, WB, IHC, IF, ChIP	TNKS2	CSB-PA867136LA01HU	Human	ELISA, IHC, IF
HIST1H3A (Ab-4)	CSB-PA010418OA04nacHU	Human, Rat, Mouse	ELISA, WB, IHC, IF, ChIP	TNRC6A	CSB-PA839859LA01HU	Human	ELISA, IHC, IF
HIST1H3A	CSB-PA010418ESR2HU	Human, Mouse	ELISA, WB, IHC	UBA52	CSB-PA025416LA01HU	Human	ELISA, IHC, IF
HIST1H4A (Ab-12)	CSB-PA010429PA12nacHU	Human, Mouse	ELISA, WB, IHC, IF, IP, ChIP	VPS29	CSB-PA890661LA01HU	Human	ELISA, WB, IHC, IF
HIST1H4A (Ab-5)	CSB-PA010429OA05npropHU	Human, Mouse	ELISA, WB, IHC, IF, IP, ChIP	WLS	CSB-PA716359LA01HU	Human	ELISA, WB, IHC
HIST1H4A (Ab-5)	CSB-PA010429OA05nscrHU	Human, Rat	ELISA, WB, IHC, IF, IP, ChIP	WNT5A	CSB-PA026138LA01HU	Human	ELISA, IHC, IF
HIST1H4A (Ab-8)	CSB-PA010429PA08nacHU	Human, Rat	ELISA, WB, IHC, IF, IP, ChIP	WNT7A	CSB-PA026141LA01HU	Human	ELISA, IHC, IF
ITPR1	CSB-PA614538LA01HU	Human	ELISA, IHC, IF	XIAP	CSB-PA026193ESR2HU	Human	ELISA, WB, IHC
KAT5	CSB-PA17849A0Rb	Human	ELISA, IHC, IF	XPO1	CSB-PA026221LA01HU	Human, Mouse	ELISA, WB, IHC, IF
KLHL12	CSB-PA700650LA01HU	Human	ELISA, IHC, IF	YWHAZ	CSB-PA01459A0Rb	Human, Mouse	ELISA, WB, IHC, IF

© Partial Validation Images of IF



Immunofluorescent analysis of A549 cells using CSB-PA009608LA01HU at dilution of 1:100 and Alexa Fluor 488-conjugated AffiniPure Goat Anti-Rabbit IgG(H+L)



Immunofluorescent analysis of A549 cells using CSB-PA009610LA01HU at dilution of 1:100 and Alexa Fluor 488-conjugated AffiniPure Goat Anti-Rabbit IgG(H+L)

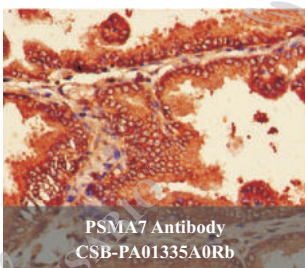


Immunofluorescent analysis of HeLa cells using CSB-PA018559LA01HU at dilution of 1:100 and Alexa Fluor 488-conjugated AffiniPure Goat Anti-Rabbit IgG(H+L)

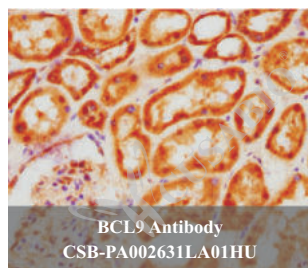


Immunofluorescence staining of HeLa cells using CSB-PA523988LA01HU at 1:100, counter-stained with DAPI.

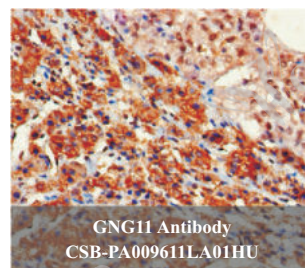
© Partial Validation Images of IHC



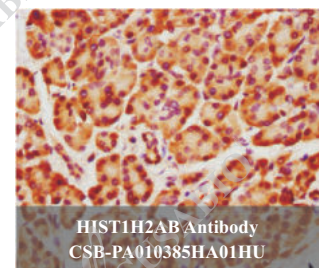
Immunohistochemistry of paraffin-embedded human prostate cancer tissue using CSB-PA01335A0Rb at dilution of 1:100



IHC image of CSB-PA002631LA01HU diluted at 1:200 and staining in paraffin-embedded human prostate tissue performed on a Leica BondTM system.

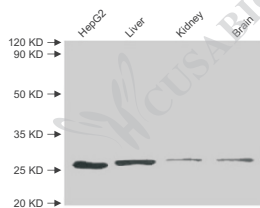


Immunohistochemistry of paraffin-embedded human adrenal gland tissue using CSB-PA009611LA01HU at dilution of 1:100



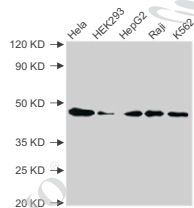
IHC image of CSB-PA010385HA01HU diluted at 1:1300 and staining in paraffin-embedded human pancreatic tissue performed on a Leica BondTM system.

Partial Validation Images of WB



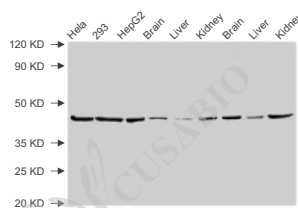
PSMA7 Antibody
CSB-PA01335A0Rb

All lanes: PSMA7 antibody at 1.6µg/ml
Secondary
Goat polyclonal to rabbit IgG at 1/10000 dilution
Predicted band size: 28, 21, 17 kDa
Observed band size: 28 kDa



CSNK2A1 Antibody
CSB-PA006072LA01HU

All lanes: CSNK2A1 antibody at 3µg/ml
Secondary
Goat polyclonal to rabbit IgG at 1/50000 dilution
Predicted band size: 46, 30 kDa
Observed band size: 46 kDa



PSMC6 Antibody
CSB-PA018896LA01HU

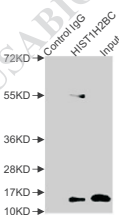
All lanes: PSMC6 antibody at 3µg/ml
Secondary
Goat polyclonal to rabbit IgG at 1/50000 dilution
Predicted band size: 45 kDa
Observed band size: 45 kDa



PARD6A Antibody
CSB-PA878839LA01HU

All lanes: PARD6A antibody at 2.5µg/ml
Secondary
Goat polyclonal to rabbit IgG at 1/50000 dilution
Predicted band size: 38 kDa
Observed band size: 38 kDa

Partial Validation Images of IP



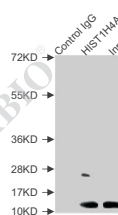
Butyryl-HIST1H2BC (K5) Antibody
CSB-PA010403OA05butHU

Immunoprecipitating HIST1H2BC in HEK293 whole cell lysate
Lane 1: Rabbit control IgG instead of CSB-PA010403OA05butHU in HEK293 whole cell lysate. For western blotting, a HRP-conjugated Protein G antibody was used as the secondary antibody (1/2000)
Lane 2: CSB-PA010403OA05butHU (5µg)+ HEK293 whole cell lysate (500µg)
Lane 3: HEK293 whole cell lysate (20µg)



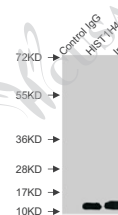
HIST1H3A (Ab-3) Antibody
CSB-PA010418OA03nphHU

Immunoprecipitating HIST1H3A in HepG2 whole cell lysate
Lane 1: Rabbit control IgG instead of CSB-PA010418OA03nphHU in HepG2 whole cell lysate.
For western blotting, a HRP-conjugated Protein G antibody was used as the secondary antibody (1/2000)
Lane 2: CSB-PA010418OA03nphHU (3µg) + HepG2 whole cell lysate (500µg)
Lane 3: HepG2 whole cell lysate (20µg)



HIST1H4A (Ab-5) Antibody
CSB-PA010429OA05nbutHU

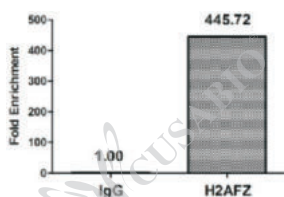
Immunoprecipitating HIST1H4A in HepG2 whole cell lysate
Lane 1: Rabbit control IgG instead of CSB-PA010429OA05nbutHU in HepG2 whole cell lysate.
For western blotting, a HRP-conjugated Protein G antibody was used as the secondary antibody (1/2000)
Lane 2: CSB-PA010429OA05nbutHU (2µg) + HepG2 whole cell lysate (500µg)
Lane 3: HepG2 whole cell lysate (20µg)



HIST1H4A (Ab-8) Antibody
CSB-PA010429PA08nacHU

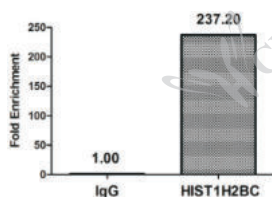
Immunoprecipitating HIST1H4A in NIH/3T3 whole cell lysate
Lane 1: Rabbit control IgG instead of CSB-PA010429PA08nacHU in NIH/3T3 whole cell lysate.
For western blotting, a HRP-conjugated Protein G antibody was used as the secondary antibody (1/2000)
Lane 2: CSB-PA010429PA08nacHU (5µg) + NIH/3T3 whole cell lysate (500µg)
Lane 3: NIH/3T3 whole cell lysate (20µg)

Partial Validation Images of ChIP



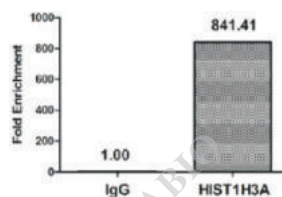
Acetyl-H2AFZ (K4) Antibody
CSB-PA0101000A04acHU

Chromatin Immunoprecipitation HeLa (4*10⁶, treated with 30mM sodium butyrate for 4h) were treated with Micrococcal Nuclease, sonicated, and immunoprecipitated with 5µg anti-H2AFZ (CSB-PA0101000A04acHU) or a control normal rabbit IgG. The resulting ChIP DNA was quantified tissue using real-time PCR with primers against the β-Globin promoter.



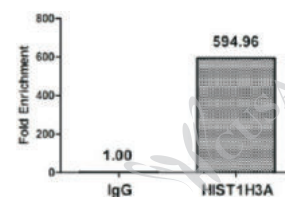
Acetyl-HIST1H2BC (K20) Antibody
CSB-PA010403OA20acHU

Chromatin Immunoprecipitation HeLa (10⁶, treated with 30mM sodium butyrate for 4h) were treated with Micrococcal Nuclease, sonicated, and immunoprecipitated with 5µg anti-HIST1H2BC (CSB-PA010403OA20acHU) or a control normal rabbit IgG. The resulting ChIP DNA was quantified using real-time PCR with primers against the β-Globin promoter.



Acetyl-HIST1H3A (K27) Antibody
CSB-PA010418OA27acHU

Chromatin Immunoprecipitation HeLa (4*10⁶, treated with 30mM sodium butyrate for 4h) were treated with Benzanase, sonicated, and immunoprecipitated with 5µg anti-HIST1H3A (CSB-PA010418OA27acHU) or a control normal rabbit IgG. The resulting ChIP DNA was quantified tissue using real-time PCR with primers against the β-Globin promoter.



Acetyl-HIST1H3A (K36) Antibody
CSB-PA010418OA36acHU

Chromatin Immunoprecipitation HeLa (4*10⁶, treated with 30mM sodium butyrate for 4h) were treated with Micrococcal Nuclease, sonicated, and immunoprecipitated with 5µg anti-HIST1H3A (CSB-PA010418OA36acHU) or a control normal rabbit IgG. The resulting ChIP DNA was quantified tissue using real-time PCR with primers against the β-Globin promoter.

CUSABIO TECHNOLOGY LLC

Postal Address: 7707 Fannin St., Ste 200-V126, Houston, TX 77054, USA

Tel: 301-363-4651 (Available 9 a.m. to 5 p.m. CST from Monday to Friday)

Email: antibody3@cusabio.com Web: www.cusabio.com

