



SARS-Cov-2 Reagents

Protein | Antibody | ELISA Kit

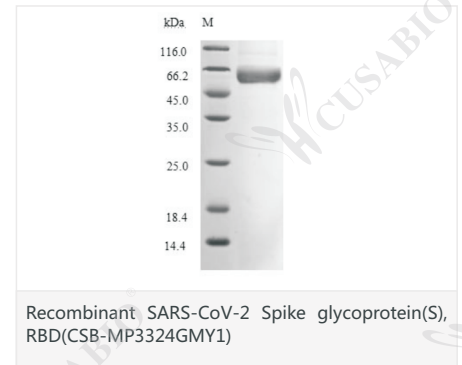
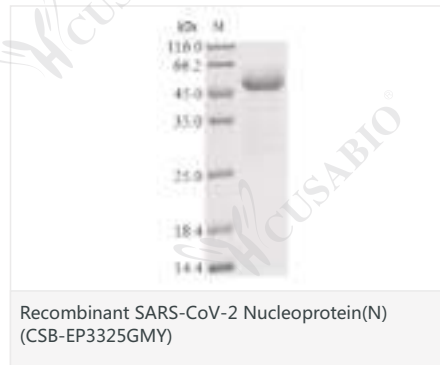
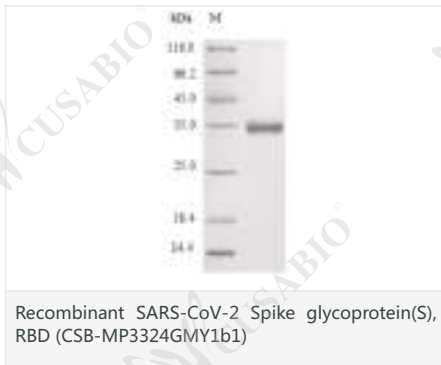
YOUR
GOOD PARTNER
IN BIOLOGY RESEARCH
www.cusabio.com



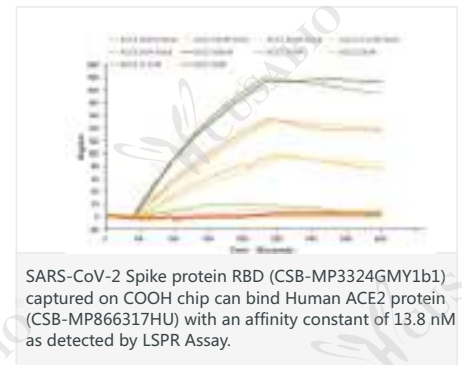
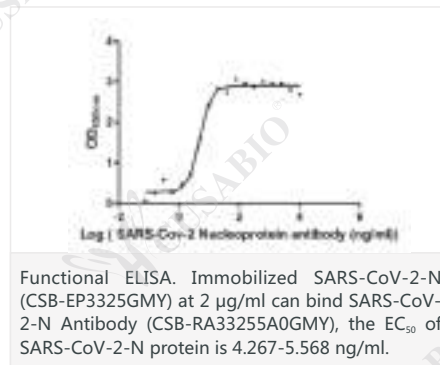
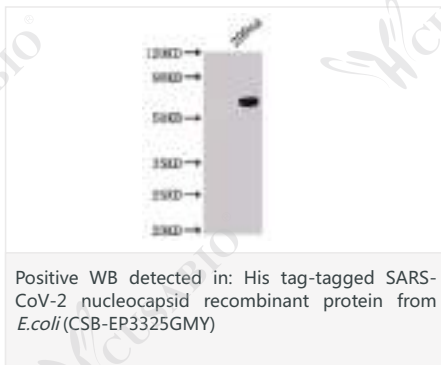
As you know, The COVID-19 has been rampant all over the world. CUSABIO, as a biotechnology company, always paid close attention to the progression of SARS-CoV-2. Once obtaining the virus gene sequence information, we quickly developed and produced SARS-CoV-2 related products. Now, CUSABIO provides related antigen reagents (N protein and S protein), antibody reagents (N antibody and S antibody) and Nucleoprotein/ Spike glycoprotein IgG ELISA Kit with high quality.

➔ SARS-CoV-2 Proteins

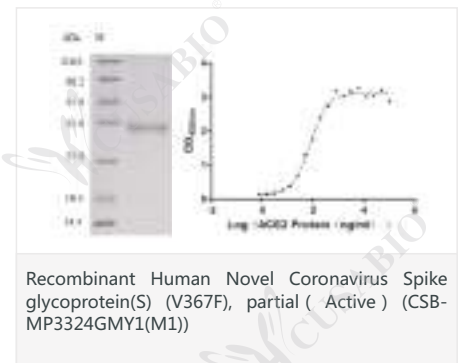
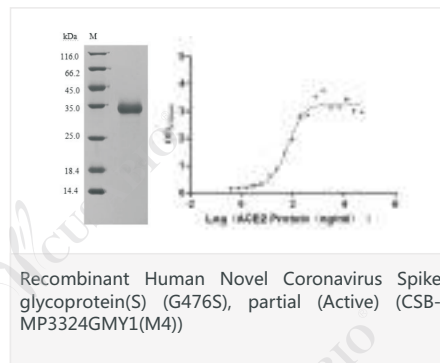
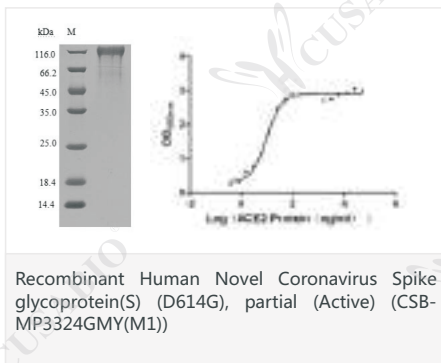
- ▶ Diverse Expression Systems and Tags
- ▶ Most of proteins are In Stock with Low Endotoxin
- ▶ Most of the Purity >90%



▶ WB , Function ELISA and LSPR Assay Validation



▶ Keeping Up With the Research Hotspot and Launching S Mutant Proteins with High Quality



Target Name	Product Name	Code	Tag Info	Source
E & M	Recombinant Severe acute respiratory syndrome coronavirus 2 Envelope small membrane protein & Membrane protein(E & M),partial	CSB-EP3402GND	N-terminal 6xHis-SUMO-tagged	E.coli
N	Recombinant Human Novel Coronavirus Nucleoprotein(N) (Active)	CSB-EP3325GMY	N-terminal 6xHis-tagged	E.coli
N	Recombinant Human Novel Coronavirus Nucleoprotein(N),partial	CSB-EP3325GMY1	C-terminal 10xHis-tagged	E.coli
N	Recombinant Human Novel Coronavirus Nucleoprotein(N),Biotinylated	CSB-EP3325GMY-B	N-terminal MBP-tagged and C-terminal 6xHis-Avi-tagged	E.coli
N	Recombinant Human Novel Coronavirus Nucleoprotein(N)	CSB-MP3325GMY	Tag-Free	Mammalian Cell
N	Recombinant Human Novel Coronavirus Nucleoprotein(N)	CSB-YP3325GMY	N-terminal 6xHis-PDI-tagged	Yeast
N	Recombinant Human Novel Coronavirus Nucleoprotein(N)	CSB-YP3325GMYa4	N-terminal 6xHis-sumostar-tagged	Yeast
Nsp10	Recombinant Severe acute respiratory syndrome coronavirus 2 Non-structural protein 9(nsp9)	CSB-EP3388GND	C-terminal 10xHis-tagged	E.coli
NSP3	Recombinant Severe acute respiratory syndrome coronavirus 2 Non-structural protein 3(nsp3),partial	CSB-EP3398GND	N-terminal 10xHis-tagged	E.coli
Nsp5	Recombinant Severe acute respiratory syndrome coronavirus 2 3C-like proteinase(NSP5)	CSB-EP3389GND	N-terminal 10xHis-tagged	E.coli
NSP8	Recombinant Human Novel Coronavirus Non-structural protein 8(ns8)	CSB-EP3366GND	N-terminal 6xHis-tagged	E.coli
Nsp9	Recombinant Severe acute respiratory syndrome coronavirus 2 Non-structural protein 9(nsp9)	CSB-MP3388GND	C-terminal hFC-Flag-tagged	Mammalian Cell
S1	Recombinant Human Novel Coronavirus Spike glycoprotein(S), partial (Active)	CSB-MP3324GMY	N-terminal 10xHis-tagged and C-terminal Flag-tagged	Mammalian Cell
S1	Recombinant Human Novel Coronavirus Spike glycoprotein(S) (D614G), partial (Active)	CSB-MP3324GMY(M1)	C-terminal 10xHis-tagged	Mammalian Cell
S1	Recombinant Human Novel Coronavirus Spike glycoprotein(S), partial	CSB-YP3324GMYa4	N-terminal 6xHis-sumostar-tagged	Yeast
S1-RBD	Recombinant Human Novel Coronavirus Spike glycoprotein(S), partial (Active)	CSB-MP3324GMY1	C-terminal 6xHis-mFc-tagged	Mammalian Cell
S1-RBD	Recombinant Human Novel Coronavirus Spike glycoprotein(S)(V367F), partial (Active)	CSB-MP3324GMY1(M1)	C-terminal 10xHis-tagged	Mammalian Cell
S1-RBD	Recombinant Human Novel Coronavirus Spike glycoprotein(S) (W436R), partial	CSB-MP3324GMY1(M2)	C-terminal 10xHis-tagged	Mammalian Cell
S1-RBD	Recombinant Human Novel Coronavirus Spike glycoprotein(S) (N354D,D364Y), partial	CSB-MP3324GMY1(M3)	C-terminal 10xHis-tagged	Mammalian cell
S1-RBD	Recombinant Human Novel Coronavirus Spike glycoprotein(S)(G476S), partial (Active)	CSB-MP3324GMY1(M4)	C-terminal 10xHis-tagged	Mammalian Cell
S1-RBD	Recombinant Human Novel Coronavirus Spike glycoprotein(S)(V483A), partial (Active)	CSB-MP3324GMY1(M5)	C-terminal 10xHis-tagged	Mammalian Cell
S1-RBD	Recombinant Human Novel Coronavirus Spike glycoprotein(S) (N501Y),partial	CSB-MP3324GMY1(M6)	C-terminal 10xHis-tagged	Mammalian Cell
S1-RBD	Recombinant Human Novel Coronavirus Spike glycoprotein(S)(N501Y),partial	CSB-MP3324GMY1(M6)k2	C-terminal 6xHis-mFC-tagged	Mammalian Cell
S1-RBD	Recombinant Human Novel Coronavirus Spike glycoprotein(S) (K417N),partial	CSB-MP3324GMY1(M7)	C-terminal 10xHis-tagged	Mammalian Cell
S1-RBD	Recombinant Human Novel Coronavirus Spike glycoprotein(S) (K417N),partial	CSB-MP3324GMY1(M7)h8	C-terminal mFC-tagged	Mammalian Cell
S1-RBD	Recombinant Human Novel Coronavirus Spike glycoprotein(S) (E484K),partial	CSB-MP3324GMY1(M8)	C-terminal 10xHis-tagged	Mammalian Cell
S1-RBD	Recombinant Human Novel Coronavirus Spike glycoprotein(S) (E484K),partial	CSB-MP3324GMY1(M8)h8	C-terminal mFC-tagged	Mammalian Cell
S1-RBD	Recombinant Human Novel Coronavirus Spike glycoprotein(S), partial, Biotinylated	CSB-MP3324GMY1-B	C-terminal mFc-Avi-tagged	Mammalian Cell
S1-RBD	Recombinant Human Novel Coronavirus Spike glycoprotein(S), partial (Active)	CSB-MP3324GMY1b1	N-terminal 10xHis-tagged and C-terminal Myc-tagged	Mammalian Cell
S1-RBD	Recombinant Human Novel Coronavirus Spike glycoprotein(S), partial (Active)	CSB-YP3324GMY1	N-terminal 6xHis-sumostar-tagged	Yeast
S1-RBD	Recombinant Human Novel Coronavirus Spike glycoprotein(S), partial	CSB-YP3324GMY2	N-terminal 6xHis-PDI-tagged	Yeast

➤ SARS-CoV-2 Antibodies

- ▶ Contains Immune Antibodies and Recombinant Antibodies, Antibody Pairs
- ▶ Most of Antibodies are In Stock
- ▶ High Specificity and Good Sensitivity



In the GICA detection system, the background of antibody (CSB-RA33255A2GM Y) is clean, the detection limit can be as low as 15.625ng/ml (1.09ng/0.07ml), and the sensitivity is very good.



In the GICA detection system, the background of antibody (CSB-RA33245A0GM Y) is clean, the detection limit can be as low as 13.94ng/ml (0.976ng/0.07ml), and the sensitivity is very good.

- ▶ Validated in Multiple Application (WB, Antibody Pair, ELISA, Neutralising, GICA)



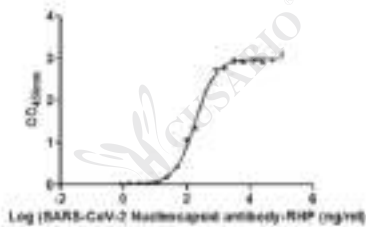
WB

Positive WB detected in: His tag-tagged SARS-CoV-2 N protein (CSB-EP3325GM Y)
SARS-CoV-2 nucleocapsid antibody at 1:1000 (CSB-RA33255A1GM Y)
Predicted band size: 48 kDa
Observed band size: 55 kDa



Antibody Pair

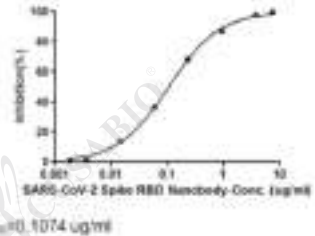
SARS-CoV-2 Spike RBD Antibody Pair 1 (CSB-EAP33245) is a solid phase sandwich Enzyme Linked-Immuno-Sorbent Assay (Sandwich ELISA).
An antibody specific for SARS-CoV-2 Spike RBD has been pre-coated onto the microwells. The SARS-CoV-2 Spike RBD protein in samples is captured by the coated antibody. Another antibody HRP conjugated as a captured antibody to detect the captured SARS-CoV-2 Spike RBD protein.



Functional ELISA

Immobilized SARS-CoV-2-N (CSB-EP3325GM Y) 2 µg/ml can bind SARS-CoV-2-N Antibody, HRP conjugated (CSB-RA33255B1GM Y), the EC50 is 188.35 ng/ml.

SARS-CoV-2 Spike RBD Nanobody (µg/ml)	Inhibition (%)
0.5	99.99%
0.75	97.99%
1.00	95.99%
1.25	93.99%
1.50	91.99%
1.75	89.99%
2.00	87.99%
2.25	85.99%
2.50	83.99%



Neutralizing Assay

Binding signal of SARS-CoV-2-S1-RBD (CSB-YP3324GM Y1) and ACE2 protein-HRP conjugate (CSB-MP866317HU) was inhibited by SARS-CoV-2 Spike RBD Nanobody (CSB-RA33245A2GM Y) with the IC50 is 0.1074 µg/ml.

► Immune Antibodies

Product Name	Clone No	Code	Tested Applications
S Monoclonal Antibody	8A1G8	CSB-MA33245A0m	ELISA
S Monoclonal Antibody	20C3G5	CSB-MA33245A1m	ELISA
S Monoclonal Antibody	18C7B10	CSB-MA33245A2m	ELISA
S Antibody	/	CSB-PA33245YA01GMY	ELISA
S Antibody	/	CSB-PA33245YA11GMY	ELISA
N Antibody	/	CSB-PA33254A0Rb	ELISA
N Antibody	9B2F3-1	CSB-MA33255A0m	ELISA
N Antibody	13D9C9	CSB-MA33255A1m	ELISA
N Antibody	9B12F2	CSB-MA33255A2m	ELISA

► Recombinant Antibodies

Product Name	Isotype	Code	Tested Applications
S Antibody	Mouse scFv fusion with human IgG1 Fc	CSB-RA33245A1GMY	ELISA, GICA, Neutralising
S Antibody	Monoclonal mouse (variable region) / human (kappa / IgG1 constant) chimeric antibody	CSB-RA33245A0GMY	ELISA, GICA
RBD Nanobody	VHH fusion with human IgG1 Fc	CSB-RA33245A2GMY	ELISA, GICA, Neutralising
N Antibody	Mouse scFv fusion with human IgG1 Fc	CSB-RA33255A1GMY	ELISA, WB, GICA
N Antibody	Monoclonal mouse (variable region) / human (kappa / IgG1 constant) chimeric antibody	CSB-RA33255A0GMY	ELISA, GICA
N Antibody	Mouse scFv fusion with human IgG1 Fc	CSB-RA33255A2GMY	ELISA, GICA

► Antibody Pairs

Product Name	Code	Tested Applications
SARS-CoV-2 Spike RBD Antibody Pair 1	CSB-EAP33245	S-ELISA
SARS-CoV-2 N Antibody Pair 1	CSB-EAP33255A1	S-ELISA
SARS-CoV-2 N Antibody Pair 2	CSB-EAP33255A2	S-ELISA
SARS-CoV-2 N Antibody Pair 3	CSB-EAP33255A3	S-ELISA
SARS-CoV-2 N Antibody Pair 4	CSB-EAP33255A4	S-ELISA

➔ SARS-CoV-2 ELISA Kits

- All ELISA Kits are for Research Use Only
- High Sensitivity, High Specificity, and High Security

Name	Code	Sample Types	Assay Principle
SARS-CoV-2 N ELISA Kit	CSB-EL33251	Serum, plasma, swabs	Quantitative
SARS-CoV-2 S1 RBD ELISA Kit	CSB-EL33244	Serum, plasma, swabs	Quantitative
Human SARS-CoV-2 N IgG Antibody ELISA Kit	CSB-EL3325HU	Serum, plasma	Qualitative
Human SARS-CoV-2 N/S1 IgG Antibody ELISA Kit	CSB-EL3326HU	Serum, plasma	Qualitative
Human SARS-CoV-2 S1 RBD IgG Antibody ELISA Kit	CSB-EL33241HU	Serum, plasma	Qualitative
Human SARS-CoV-2 S1 RBD IgM Antibody ELISA Kit	CSB-EL33242HU	Serum, plasma	Qualitative
SARS-CoV-2 Neutralizing Antibody ELISA Kit	CSB-EL33243HU	Serum, plasma	Qualitative

➔ Other Coronavirus Related Reagents

► Proteins

Target Name	Code	Expression Region	Species	Source
RBD	CSB-MP348663HQE	306-527aa	SARS-COV	Mammalian cell
N	CSB-EP349523HQE	1-422aa	SARS-COV	E.coli
S	CSB-EP336163HIY	15-344aa	OC43-COV	E.coli
N	CSB-EP322753HIT	1-389aa	229E-COV	E.coli

► Antibodies

Product Name	Code	Species Reactivity	Tested Applications
S Antibody	CSB-PA333052LA01BJO	Bovine coronavirus	ELISA
S Antibody	CSB-PA322803LA01BJK	Bovine coronavirus	ELISA, WB
S Antibody	CSB-PA336163EA01HIY	Human coronavirus Oc43	ELISA

Coronavirus-Host Interactome Targets Reagents

► Proteins

Target Name	Product Name	Code	Source	Tag Info
ACE2	Recombinant Human Angiotensin-converting enzyme 2(ACE2),partial, Biotinylated (Active)	CSB-MP866317HU-B	Mammalian cell	C-terminal mFc-Avi-tagged
ACE2	Recombinant Human Angiotensin-converting enzyme 2(ACE2), partial (Active)	CSB-MP866317HU	Mammalian cell	C-terminal hFc-tagged
ACE2	Recombinant Human Angiotensin-converting enzyme 2(ACE2), partial(Active)	CSB-AP005671HU	Mammalian cell	C-terminal 6xHis-tagged
CD147	Recombinant Human Basigin(BSG),partial	CSB-RP117574h	E.coli	N-terminal 6xHis-tagged
CD147	Recombinant Human Basigin(BSG),partial	CSB-MP002831HU	Mammalian cell	C-terminal hFc-tagged
CD147	Recombinant Human Basigin(BSG),partial	CSB-MP002831HUf3	Mammalian cell	C-terminal 6xHis-Myc-tagged
CTSB	Recombinant Human Cathepsin B(CTSB),partial (Active)	CSB-AP005381HU	Mammalian cell	C-terminal 6xHis-tagged
CTSB	Recombinant Human Cathepsin B(CTSB),partial	CSB-EP006185HU1	E.coli	N-terminal GST-tagged
DPP4	Recombinant Human Dipeptidyl peptidase 4(DPP4)	CSB-CF007139HU	in vitro E.coli expression system	Inquiry
NUP98	Recombinant Human Nuclear pore complex protein Nup98-Nup96 (NUP98) ,partial	CSB-MP016209HU	Mammalian cell	C-terminal hFc-tagged
TMPRSS2	Recombinant Human Transmembrane protease serine 2 (TMPRSS2),partial	CSB-EP023924HU	E.coli	N-terminal 6xHis-tagged
TMPRSS2	Recombinant Human Transmembrane protease serine 2 (TMPRSS2),partial,Biotinylated	CSB-EP023924HU-B	E.coli	N-terminal MBP-tagged and C-terminal 6xHis-Avi-tagged
TMPRSS2	Recombinant Human Transmembrane protease serine 2(TMPRSS2), partial (Active)	CSB-YP023924HU	Yeast	N-terminal 6xHis-tagged
TMPRSS2	Recombinant Human Transmembrane protease serine 2(TMPRSS2), partial	CSB-MP023924HU	Mammalian cell	N-terminal 10xHis-tagged and C-terminal Myc-tagged
TMPRSS2	Recombinant Human Transmembrane protease serine 2(TMPRSS2) (R255Q),partial	CSB-YP023924HU(M)c7	Yeast	C-terminal 6xHis-tagged
TMPRSS2	Recombinant Human Transmembrane protease serine 2(TMPRSS2) (R255Q),partial	CSB-YP023924HU(M)f3	Yeast	C-terminal 6xHis-Myc-tagged
TMPRSS2	Recombinant Human Transmembrane protease serine 2(TMPRSS2) (R255Q),partial (Active)	CSB-MP023924HU(M)b0	Mammalian cell	N-terminal 10xHis-tagged

► Antibodies

Product Name	Code	Species Reactivity	Tested Applications
ACE2 Antibody	CSB-PA866317LA01HU	Human	ELISA, IHC, IF
ACE2 Antibody	CSB-PA001150GA01HU	Human, Mouse, Rat	ELISA,WB
APN Antibody	CSB-PA001827LA01HU	Human, Mouse	ELISA, WB, IHC, IF
APN Antibody	CSB-PA001827GA01HU	Human,Mouse,Rat	ELISA,WB
CD147 antibody	CSB-PA11759A0Rb	Human	ELISA, WB, IHC
CTSB Antibody	CSB-PA06974A0Rb	Human, Mouse	ELISA, WB, IHC, IF
DPP4 Antibody	CSB-PA06229A0Rb	Human, Rat	ELISA, WB, IHC, IF
DPP4 Antibody	CSB-PA007139GA01HU	Human,Mouse,Rat	ELISA,WB,IHC
TMPRSS2 Antibody	CSB-PA971239	Human	ELISA,WB

► ELISA Kits

Product Name	Code	Sample Types	Detection Range
Human ACE2 ELISA Kit	CSB-E04489h	serum, plasma, cell culture supernates	0.156 ng/mL-10 ng/mL
Human APN ELISA kit	CSB-EL001827HU	serum, plasma, tissue homogenates	31.25 pg/mL-2000 pg/mL
Human CD147 ELISA Kit	CSB-E12994h	serum, plasma	12.5 pg/mL-800 pg/mL
Human CTSB ELISA kit	CSB-E13450h	serum, plasma, tissue homogenates	0.312 ng/mL-20 ng/mL

CUSABIO TECHNOLOGY LLC

Postal Address : 7505 Fannin St. Ste 610-312, Houston,
TX 77054, USA

Tel : 301-363-4651 (Available 9 a.m. to 5 p.m. CST from
Monday to Friday)

Web: www.cusabio.com

Email: Marketing@cusabio.com

