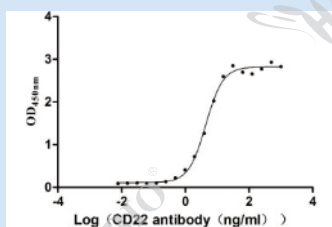


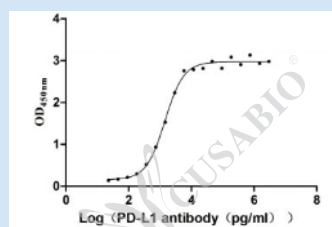
Hot Proteins

Molecule	Code	Tag Info	Molecule	Code	Tag Info	Molecule	Code	Tag Info
CD160	CSB-AP005221HU	C-terminal 6xHis-tagged	CD47	CSB-AP005201HU	C-terminal 6xHis-tagged	MSLN	CSB-MP015044HUc9	N-terminal FC-tagged
CD22	CSB-MP004900HU	C-terminal 6xHis-tagged	CD86	CSB-AP005161HU	C-terminal 6xHis-tagged	SIRPA	CSB-AP005271HU	C-terminal 6xHis-tagged
CD274 (PD-L1)	CSB-MP878942HU1	C-terminal FC-tagged	CTLA4	CSB-AP005121GU	C-terminal 6xHis-tagged	TACSTD2 (TROP2)	CSB-MP023072HU1	C-terminal FC-tagged
CD276	CSB-MP733578HU	C-terminal FC-Myc-tagged	EGFR	CSB-MP007479HU	N-terminal 10xHis-tagged and C-terminal Myc-tagged	TNFRSF17 (BCMA)	CSB-MP023974HU1	C-terminal FC-tagged
CD40	CSB-AP005181HU	C-terminal FC-tagged	EPHA3	CSB-MP007723HU	C-terminal 6xHis-tagged	TNFRSF4	CSB-AP005241HU	C-terminal 6xHis-tagged
CD40LG	CSB-AP005191HU	Tag-Free	HAVCR2	CSB-AP005281HU	C-terminal FC-Avi-tagged	TNFRSF9	CSB-AP005131HU	C-terminal 6xHis-FC-tagged
CD44	CSB-MP004938HU1	C-terminal FC-tagged	KLRK1	CSB-MP012474HU1	C-terminal FC-Avi-tagged	TNFSF4	CSB-AP005261HU	N-terminal 6xHis-tagged



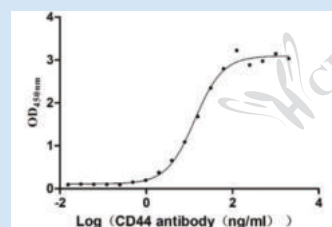
Recombinant Human CD22 (CSB-MP004900HU)

The EC₅₀ as determined by its ability to bind anti-CD22 rabbit monoclonal antibody in functional ELISA is 4.034-4.800 ng/ml.



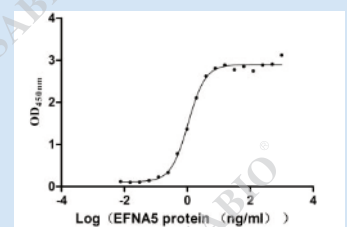
Recombinant Human PD-L1 (CSB-MP878942HU1)

The EC₅₀ as determined by its ability to bind anti-PD-L1 mouse monoclonal antibody in functional ELISA is 1.252-1.653 ng/ml.



Recombinant Human CD44 (CSB-MP004938HU1)

The EC₅₀ as determined by its ability to bind anti-CD44 mouse monoclonal antibody in functional ELISA is 11.89-14.94 ng/ml.

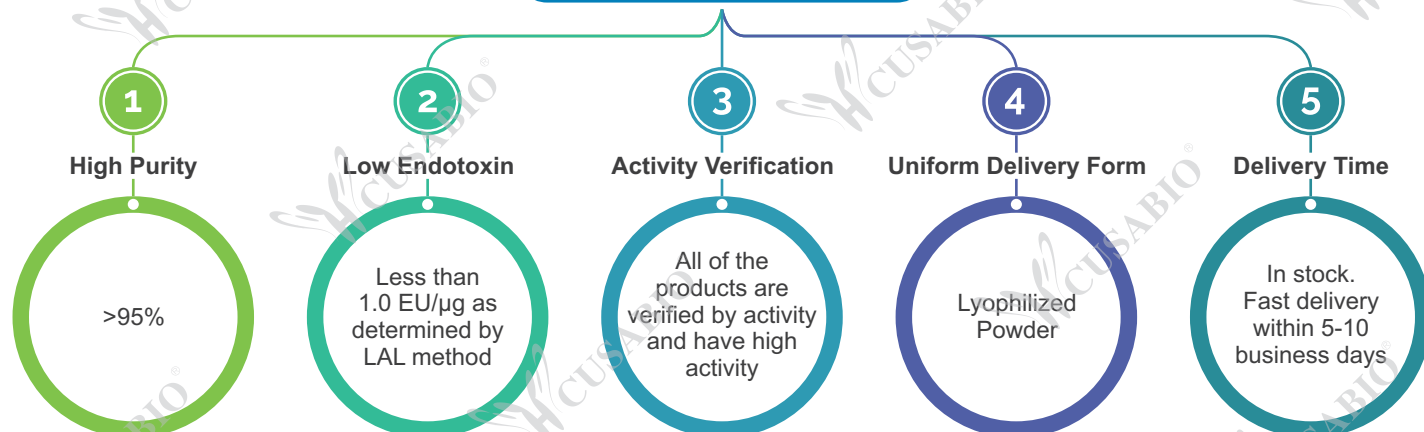


Recombinant Human EPHA3 (CSB-MP007723HU)

The EC₅₀ as determined by its ability to bind human EFNA5 in functional ELISA is 0.9734-1.179 ng/ml.

CUSABIO provide more drug target proteins, such as CAR-T cell therapy target, CD antigen *et al.*

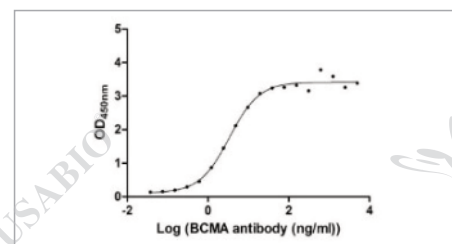
Product Features



CAR-T Cell Therapy Target

CAR-T cell therapy is a kind of cancer treatment that uses cells from your own immune system. Doctors take a type of white blood cell from your body and genetically change the cells in a lab so they can better find your cancer. Then millions of these target-seeking cells are put back into your body. CAR-T Cell Therapy Targets refer to targets involved in CAR-T cell therapy.

Molecule	Species	Source	Code
CD22 ^{HOT}	Human	Mammalian cell	CSB-MP004900HU
CD274 (PD-L1) ^{HOT}	Human	Mammalian cell	CSB-MP878942HU1
EGFR ^{HOT}	Human	Mammalian cell	CSB-MP007479HU
MSLN ^{HOT}	Human	Mammalian cell	CSB-MP015044HUc9
TNFRSF17 (BCMA) ^{HOT}	Human	Mammalian cell	CSB-MP023974HU1

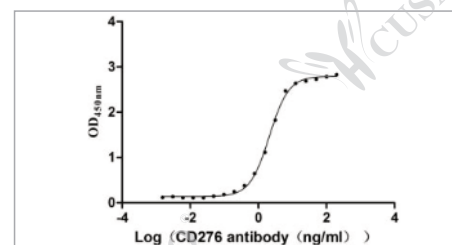


Recombinant Human THFRSF17 (CSB-MP023974HU1)
The EC₅₀ as determined by its ability to bind anti-BCMA recombinant antibody in functional ELISA is 1.912-2.488 ng/ml.

CD Antigen

CD antigens refer to a series of cell surface antigens of leukocytes and play an important role in immune reactions of organisms. As lymphocytes mature, they express different protein receptors on the cell surface, which can aid in determining the type and maturation stage of the cells being examined. These proteins or antigen markers are called **Clusters of Differentiation**.

Molecule	Species	Source	Code
CD107a (LAMP1)	Human	Mammalian cell	CSB-AP005091HU
CD112 (NECTIN2)	Human	Mammalian cell	CSB-AP005081HU
CD19	Human	Mammalian cell	CSB-AP005061HU
CD22 ^{HOT}	Human	Mammalian cell	CSB-MP004900HU
CD274(PD-L1) ^{HOT}	Human	Mammalian cell	CSB-MP878942HU1
CD276 ^{HOT}	Human	Mammalian cell	CSB-MP733578HU
CD44 ^{HOT}	Human	Mammalian cell	CSB-MP004938HU1
CD46 ^{HOT}	Human	Mammalian cell	CSB-MP004939HU
CD73 (NT5E)	Human	Mammalian cell	CSB-AP005071HU



Recombinant Human CD276 (CSB-MP733578HU)
The EC₅₀ as determined by its ability to bind anti- Anti-CD276 rabbit antibody in functional ELISA is 1.961-2.243 ng/ml.

CUSABIO TECHNOLOGY LLC

Postal Address: 7707 Fannin St., Ste 200-V126, Houston, TX 77054, USA

Tel: 301-363-4651(Available 9 a.m. to 5 p.m. CST from Monday to Friday)

Website: www.cusabio.com