

fine handknitting yarns

SEARCH

Go

FREE KnitBits

Berroco Blog

Email This Page

FREE
PATTERNS

Wishshaw

knit in **Berroco Comfort® Chunky** | [color info](#)
Skill level: **Intermediate**[rollover to enlarge](#)[rollover to enlarge](#)

WEB EXCLUSIVE

www.berroco.com



Wishshaw is a long cardigan coat emblazoned with diagonal chevron texture and deep ribbing at the cuffs and hems.



PDF Pattern Instructions

(If you can't open this PDF file you need Adobe Acrobat Reader. Get it [here](#).)

Shown in size L

SIZES

Directions are for women's size X-Small. Changes for sizes Small, Medium, Large, 1X and 2X are in parentheses.

FINISHED MEASUREMENTS

Bust (closed) – 32(36-40-44-48-52)''

Length – 35''

Note: This garment was designed so that fronts just meet, do not overlap

MATERIALS

7(8-9-10-11-12) Balls **BERROCO COMFORT CHUNKY** (100 grs), #5713 Dusk
 Straight knitting needles, sizes 9 (5.50 mm) and 10½ (6.50 mm) OR SIZE TO OBTAIN GAUGE
 29" Length circular knitting needle, size 9 (5.50 mm)
 3 St holders

GAUGE

16 sts = 4"; 26 rows = 4" in charted pat on larger needles
 TO SAVE TIME, TAKE TIME TO CHECK GAUGE

BACK

With smaller straight needles, cast on 78(86-98-106-114-122) sts.

Ribbing: Row 1 (RS): K2, * p2, k2, rep from * across.

Row 2: P2, * k2, p2, rep from * across. Rep these 2 rows until piece measures 6" from beg, end on RS. Change to larger needles and p the next row, dec 14(14-16-16-16-18) sts across – 64(72-82-90-98-104) sts. Keeping 1 st at each edge in Garter St and following chart over remaining sts, work even until piece measures 27(26½-26½-26-26-25½)" from beg, end on WS.

Shape Armholes: Bind off 8 sts at beg of the next 2 rows – 48(56-66-74-82-88) sts. Work even until armholes measure 8(8½-8½-9-9-9½)", end on WS.

Shape Shoulders and Neck: Bind off 9(13-18-22-26-29) sts, work the next 30 sts and sl these sts onto holder for back neck, bind off remaining 9(13-18-22-26-29) sts.

LEFT FRONT

With smaller straight needles, cast on 30(34-38-42-46-54) sts. Work in ribbing same as back for 6", end on RS. Change to larger needles and p the next row, dec 6(6-6-6-6-10) sts across – 24(28-32-36-40-44) sts. Keeping 1 st at each edge in Garter St and following chart over remaining sts, work even until piece measures 27(26½-26½-26-26-25½)" from beg, end on WS.

Shape Armhole: Bind off 8 sts, work to end – 16(20-24-28-32-36) sts. Work even until armhole measures 5(5½-5½-6-6-6½)", end on RS.

Shape Neck: Bind off 4(4-3-3-3-4) sts, work to end – 12(16-21-25-29-32) sts. Dec 1 st at neck edge every RS row 3 times. Work even on 9(13-18-22-26-29) sts until armhole measures 8(8½-8½-9-9-9½)", end on WS. Bind off.

RIGHT FRONT

Work to correspond to left front, reversing all shaping. Bind off for armhole on WS row. Bind off for neck on RS row. Work neck decs at beg of RS rows.

SLEEVES

With smaller straight needles, cast on 54 sts. Work in ribbing same as back for 5", end on RS. Change to larger needles and p the next row, dec 10 sts across – 44 sts. Keeping 1 st at each edge in Garter St and following chart over remaining sts, work even until sleeve measures 10" from beg, end on WS. Inc 1 st each side every 1¼(1-1-¾-¾-½)" 10(12-12-14-14-16) time, working incs into charted pat as sts become available – 64(68-68-72-72-76) sts. Work even until sleeve measures 27(26-26-25-25-24)" from beg, end on WS. Mark beg and end of last row. Work even until sleeve measures 2" above markers, end on WS. Bind off.

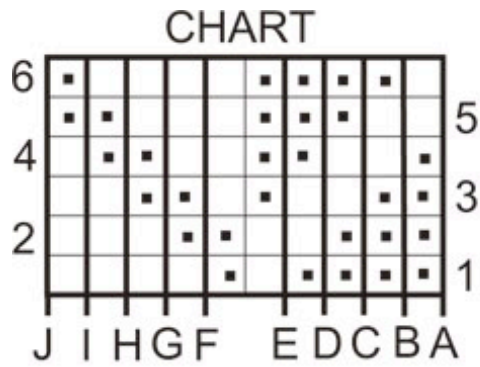
FINISHING

Sew shoulder seams.

Left Frontband: With RS facing, using circular needle, beg at neck edge, pick up and k150 sts along left front edge. Beg with Row 2, work in ribbing same as back for 2", end on WS. Bind off in ribbing.

Right Frontband: Beg at lower edge, work same as left frontband.

Neckband: With RS facing, using circular needle, beg at outer edge of right frontband, pick up and k78 sts around entire neck edge. Beg with Row 2, work in ribbing same as back for 2", end on WS. Bind off. Sew bound-off edges of sleeves to armholes. Sew side edges of sleeves above markers to bound-off sts of armholes. Sew side and sleeve seams, reversing seams over ribbing. Fold ribbing back to RS and tack in place.

**KEY TO CHART**

□ K on RS, p on WS

■ P on RS, k on WS

HOW TO USE CHART**BACK -**

For sizes X-S and 2X: Beg at I, work to J, rep between A and J, work from A to B

For sizes S and M: Rep between A and J

For size L: Beg at F, work to J, rep between A and J, work from A to E

For size 1X: Beg at G, work to J, rep between A and J, work from A to D

FRONTS

For sizes X-S and 2X: Beg at I, work to J, rep between A and J, work from A to B

For size S: Beg at G, work to J, rep between A and J, work from A to D

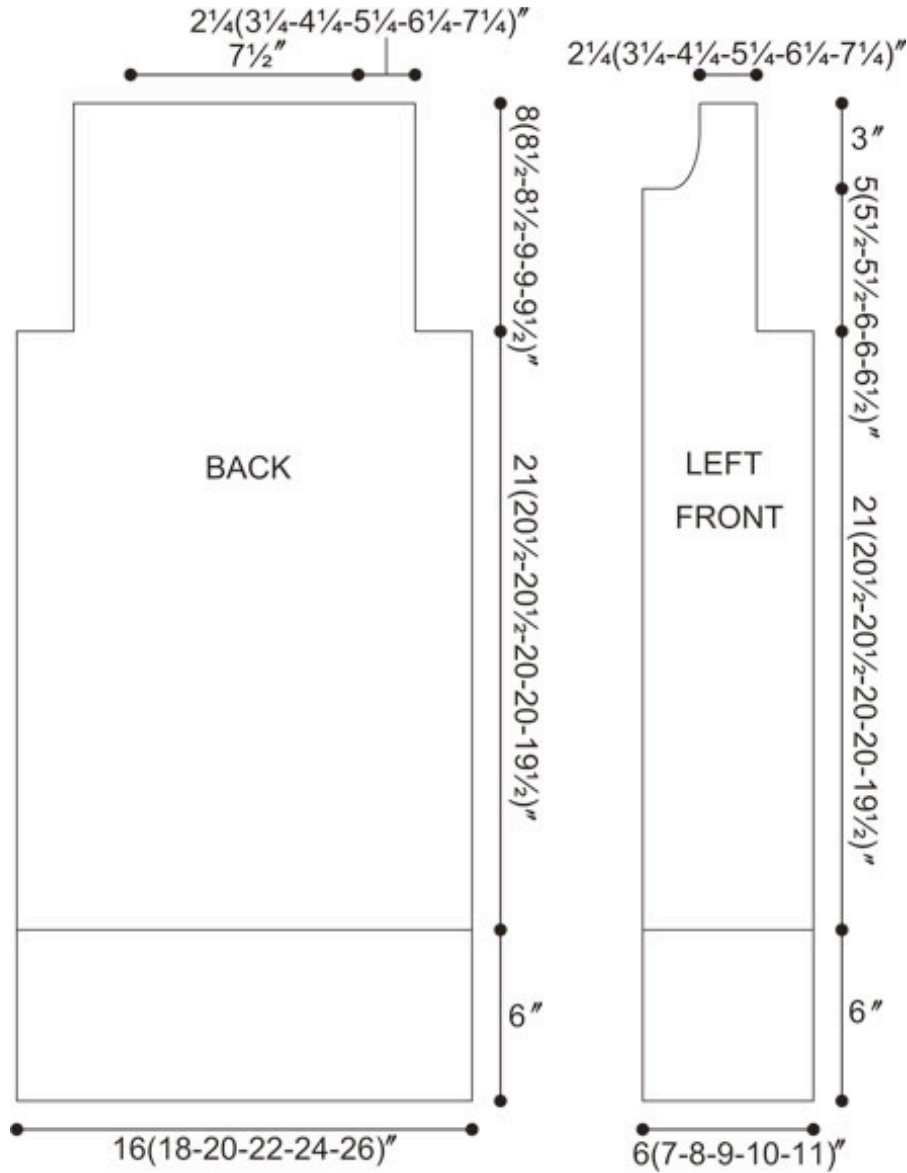
For size M: Rep between A and J

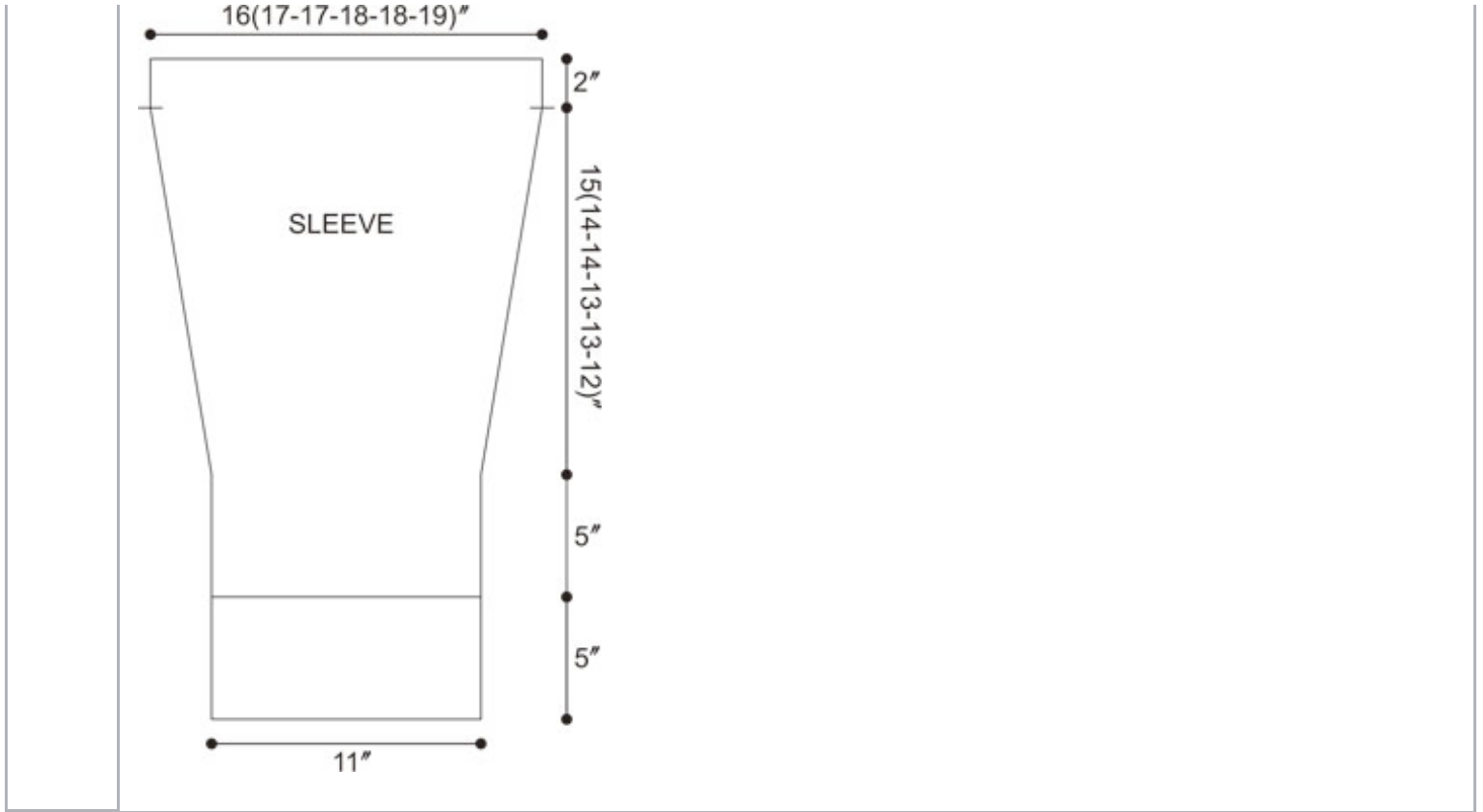
For size L: Beg at H, work to J, rep between A and J, work from A to C

For size 1X: Beg at F, work to J, rep between A and J, work from A to E

SLEEVES

For all sizes: Beg at I, work to J, rep between A and J, work from A to B





[Home](#) | [Yarn Shops](#) | [Yarns](#) | [Free KnitBits®](#) | [New This Season](#) | [Free Patterns](#) | [Blog](#) | [Multimedia](#)
[Pattern Corrections](#) | [Abbreviations & Terms](#) | [Links](#) | [Handeze® Glove](#) | [Scarf Central](#)
[About Us](#) | [Privacy Statement](#) | [FAQs](#) | [Contact Us](#)

Berroco, Inc. P.O. Box 367, 14 Elmdale Road, Uxbridge, MA 01569-0367 USA
copyright 2009 Berroco