

[FREE KnitBits](#) [Berroco Blog](#) [Email This Page](#)

**FREE PATTERNS**

# Wishbone

knit in **Inca Gold™** | [color info](#)  
Skill level: **Intermediate**



[rollover to enlarge](#)

UPDATED  
7/6/09



[rollover to enlarge](#)

WEB EXCLUSIVE  
[www.berroco.com](http://www.berroco.com)



Wishbone features a unique cable, bracelet length sleeves and a neatly finished crewneck--perfect for the office!



### PDF Pattern Instructions

(If you can't open this PDF file you need Adobe Acrobat Reader. Get it [here](#).)

### SIZE

Directions are for women's size X-Small. Changes for sizes Small, Medium, Large, 1X and 2X are in parentheses.

### FINISHED MEASUREMENTS

Bust - 32(36-40-44-48-52)"  
Length - 20 1/2(20 1/2-22-22 1/2-24-24)"

### MATERIALS

8(8-10-11-13-14) hanks **BERROCO INCA GOLD** (50 grs), #6403 Beja  
 Straight knitting needles, sizes 5 (3.75 mm) and 7 (4.50 mm) OR SIZE TO OBTAIN GAUGE  
 16" Length circular knitting needle, size 5 (3.75 mm)  
 Cable needle (cn)  
 3 St markers

### GAUGE

20 sts = 4"; 28 rows = 4" in St st on larger needles  
 30 sts = 4"; 28 rows = 4" in Charted pat on larger needles  
 TO SAVE TIME, TAKE TIME TO CHECK GAUGE

### BACK

With smaller straight needles, cast on 114(126-138-150-162-174) sts.

**Ribbing: Row 1 (RS):** K2, \* p2, k2, rep from \* across.

**Row 2:** P2, \* k2, p2, rep from \* across. Rep these 2 rows until piece measures 2" from beg, end on RS, dec 18(20-22-24-26-28) sts across last row – 96(106-116-126-136-146) sts. Change to larger needles.

**Establish Charts: Row 1 (WS):** P25(30-35-40-45-50), place marker, work Row 1 of Chart over 46 sts, place marker, p to end.

**Row 2:** K to first marker, work Row 2 of Chart over 46 sts, k to end. Work even in pat as established until piece measures 12(12-13-13-14-14)" from beg, end on WS.

**Shape Armholes:** Bind off 4(5-7-8-10-10) sts at beg of the next 2 rows – 88(96-102-110-116-126) sts.

**Dec Row (RS):** K1, SSK, work to last 3 sts, k2 tog, k1 – 86(94-100-108-114-124) sts. Rep this dec every RS row 5(9-9-11-11-14) times more – 76(76-82-86-92-96) sts. Work even until armholes measure 7 1/2(7 1/2-8-8 1/2-9-9)", end on WS.

**Shape Shoulders:** Bind off 5(5-6-6-7-9) sts at beg of the next 2 rows, then 5(5-6-7-8-8) sts at beg of the next 4 rows, end on WS. Bind off remaining 46 sts for back neck.

### FRONT

Work same as back until armholes measure 4 1/2", end on WS – 76(76-82-86-92-96) sts.

**Shape Neck: Next Row (RS):** Work 24(24-27-29-32-34) sts, join another ball of yarn and bind off center 28 sts, work to end. Working both sides at once with separate balls of yarn, work 1 row even.

**Dec Row (RS):** With first ball of yarn, work to 3 sts before neck, k2 tog, k1; with second ball of yarn, k1, SSK, work to end – 23(23-26-28-31-33) sts each side. In this manner, dec 1 st at each neck edge every RS row 8 times more. When all decs have been completed, work even if necessary on 15(15-18-20-23-25) sts each side until armholes measure 7 1/2(7 1/2-8-8 1/2-9-9)", end on WS. Bind off 5(5-6-6-7-9) sts at each armhole edge once, then 5(5-6-7-8-8) sts twice for shoulders.

### SLEEVES

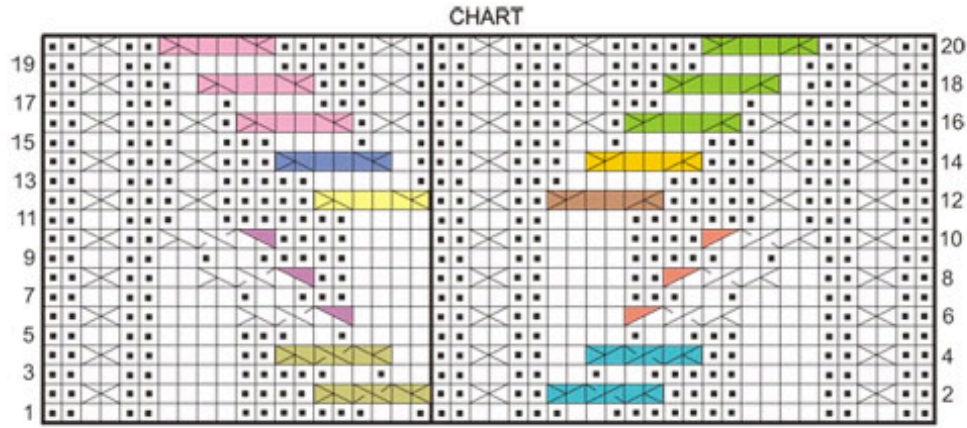
With smaller straight needles, cast on 62 sts. Work in ribbing same as back for 2", end on WS. Change to larger needles and p the next row, dec 16 sts across – 46 sts. Work in St st, inc 1 st each side every 1 1/4(1 1/4-1-3/4-1/2-1/2)" 7(7-9-12-14-17) times – 60(60-64-70-74-80) sts. Work even until sleeve measures 12" from beg, end on WS.

**Shape Cap:** Bind off 4(5-7-8-10-10) sts at beg of the next 2 rows – 52(50-50-54-54-60) sts. Dec 1 st each side in same manner as back armholes every 4th row 0(1-4-4-4-4) times, then every RS row 17(15-9-9-9-9) times, end on WS – 18(18-24-28-28-34) sts. Bind off 3 sts at beg of the next 2 rows. Bind off remaining 12(12-18-22-22-28) sts.

### FINISHING

Sew shoulder seams.

**Neckband:** With RS facing, using circular needle, beg at center back neck, pick up and k128 sts around entire neck edge. Mark for beg of rnd and carry marker up. Work in k2, p2 ribbing for 1". Bind off in ribbing. Sew in sleeves. Sew side and sleeve seams.



**KEY TO CHART**

□ K on RS, p on WS

■ P on RS, k on WS

⊗ RT - K2 tog, leave on LH needle,  
then k first st again

SI 2 sts to cn and hold in  
BACK, p1, RT, p1, k2 from cn

SI 4 sts to cn and hold in FRONT,  
k2, (p1, RT, p1) from cn

SI 2 sts to cn and hold in  
BACK, p1, RT, p1, p2 from cn

SI 4 sts to cn and hold in FRONT,  
p2, (p1, RT, p1) from cn

SI 4 sts to cn and hold in FRONT,  
p2, k4 from cn

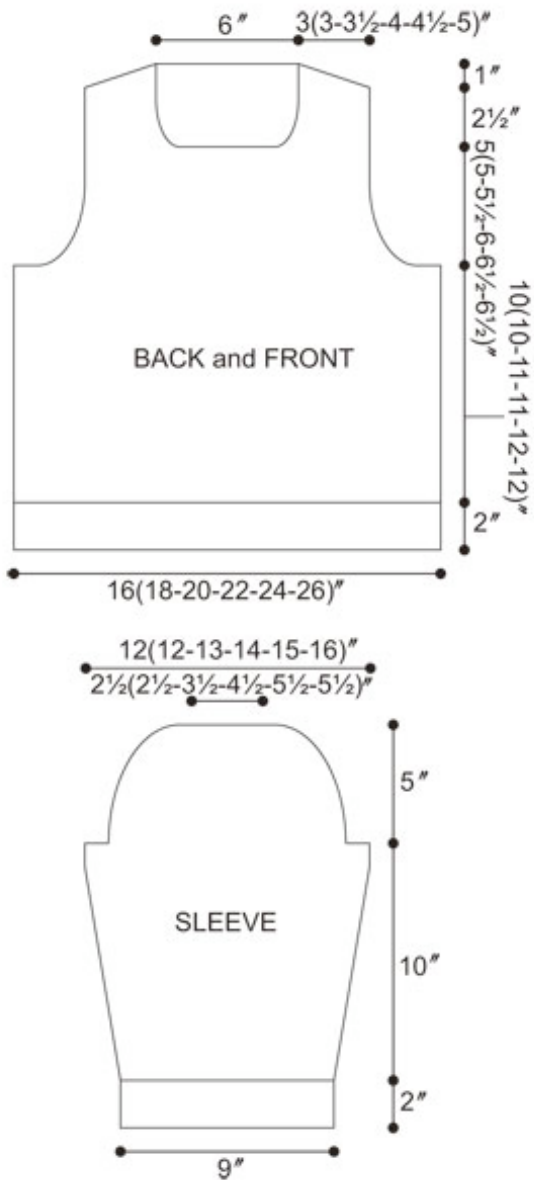
SI 4 sts to cn and hold in FRONT,  
k1, p1, k4 from cn

SI 4 sts to cn and hold in FRONT,  
p1, k1, k4 from cn

SI 2 sts to cn and hold in BACK,  
k4, p2 from cn

SI 2 sts to cn and hold in BACK,  
k4, (p1, k1) from cn

SI 2 sts to cn and hold in BACK,  
k4, (k1, p1) from cn



[Home](#) | [Yarn Shops](#) | [Yarns](#) | [Free KnitBits®](#) | [New This Season](#) | [Free Patterns](#) | [Blog](#) | [Multimedia](#)  
[Pattern Corrections](#) | [Abbreviations & Terms](#) | [Links](#) | [Handeze® Glove](#) | [Scarf Central](#)  
[About Us](#) | [Privacy Statement](#) | [FAQs](#) | [Contact Us](#)

Berroco, Inc. P.O. Box 367, 14 Elmdale Road, Uxbridge, MA 01569-0367 USA  
 copyright 2009 Berroco