

fine handknitting yarns

SEARCH

Go

FREE KnitBits

Berroco Blog

Email This Page

FREE
PATTERNS

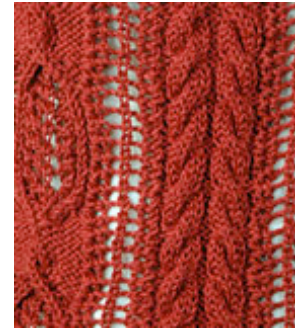
Tarte

knit in **Mica™** | [color info](#)
Skill level: **Intermediate**

rollover to enlarge



Special Cable Technique video



rollover to enlarge

WEB EXCLUSIVE
www.berroco.com

BOOKMARK

Watch the **Special Cable Technique video** for tips on this pattern.Our lace and cable tank top Tarte is perfect layered over another tank. Find the same pattern stitch in our winter sweater **Nesselrode**.**PDF Pattern Instructions**(If you can't open this PDF file you need Adobe Acrobat Reader. Get it [here](#).)

Shown in size Small

SIZES

Directions are for women's size X-Small. Changes for sizes Small, Medium, Large, 1X and 2X are in parentheses.

FINISHED MEASUREMENTS

Bust – 32(36-40-44-48-52)”

Length – 24(24-25-26-27-27)”

MATERIALS7(7-9-10-11-13) Hanks **BERROCO MICA** (50 grs), #1148 Cinnabar

Straight knitting needles, sizes 4 (3.50 mm) and 6 (4.00 mm) OR SIZE TO OBTAIN GAUGE

Crochet hook, size 3.75 mm (F-5)

Cable needle (cn)

2 St markers

GAUGE

21 sts = 4”; 29 rows = 4” in St st on larger needles

TO SAVE TIME, TAKE TIME TO CHECK GAUGE

BACK

With smaller needles, cast on 94(106-118-130-142-154) sts.

Ribbing: Row 1 (RS): K2, * p2, k2, rep from * across.

Row 2: P2, * k2, p2, rep from * across. Rep these 2 rows until piece measures 4” from beg, end on RS. Change to larger needles and p the next row, dec 10(10-12-14-16-16) sts across – 84(96-106-116-126-138) sts. Work even in St st until piece measures 5(5-5½-6-6½-6½)” from beg, end on WS. Dec 1 st each side of next row, then every 2¼” twice more – 78(90-100-110-120-132) sts. Work even until piece measures 11½(11½-12-12½-13-13)” from beg, end on WS. Inc 1 st each side of next row, then every 1½” twice more – 84(96-106-116-126-138) sts. Work even until piece measures 15½(15½-16-16½-17-17)” from beg, end on WS.

Shape Armholes: Bind off 3(4-3-6-7-9) sts at beg of the next 2 rows, 0(3-3-4-6-8) sts at beg of the next 2 rows, then 0(2-2-3-4-6) sts at beg of the next 2 rows. Dec 1 st each side every RS row 7(7-10-10-9-9) times – 64(64-70-70-74) sts. Work even until armholes measure 7½(7½-8-8½-9-9)”, end on WS.

Shape Neck and Shoulders: Next Row (RS): Bind off 2(2-3-3-3-3) sts, k until there are 5(5-7-7-9-9) sts on RH needle, join another hank of yarn and bind off center 50 sts, k to end. Working both sides at once, bind off 2(2-3-3-3-3) sts at beg of the next row, then 2(2-3-3-4-4) sts at beg of the next 4 rows. AT THE SAME TIME, dec 1 st at each neck edge once.

FRONT

Work same as back until piece measures 4” from beg, end on RS – 94(106-118-130-142-154) sts. Change to larger needles.

Dec/Inc Row (WS): P15(21-27-33-39-45), decreasing 1(1-2-3-4-4) sts across, place marker; p64, increasing 34 sts across, place marker; p to end, decreasing 1(1-2-3-3-4) sts across – 126(138-148-158-168-180) sts.

Establish Chart: Row 1 (RS): K to first marker, work Row 1 of chart to second marker, k to end.

Row 2: P to first marker, work Row 2 of chart to second marker, p to end. Work even in pat as established until piece measures 5(5-5½-6-6½-6½)” from beg, end on WS. Dec 1 st each side of next row, then every 2¼” twice more – 120(132-142-152-162-174) sts. Work even until piece measures 11½(11½-12-12½-13-13)” from beg, end on WS. Inc 1 st each side of next row, then every 1½” twice more – 126(138-148-158-168-180) sts. Work even until piece measures

15½(15½-16-16½-17-17)” from beg, end on WS.

Shape Armholes: Bind off 3(4-3-6-7-9) sts at beg of the next 2 rows, 0(3-3-4-6-8) sts at beg of the next 2 rows, then 0(2-2-3-4-6) sts at beg of the next 2 rows. Dec 1 st each side every RS row 7(7-10-10-9-9) times – 106(106-112-112-116-116) sts. AT THE SAME TIME, when armholes measure 2(2-2½-3-3½-3½)”, end on WS. Mark center 62 sts on last row.

Shape Neck: Next Row (RS): Continuing to work armhole decs if necessary, work to marker, join another hank of yarn and bind off center 62 sts, decreasing 2 sts over each 6-stitch cable), work to end. Working both sides at once, bind off 6 sts at each neck edge once, then 4 sts once, end on WS.

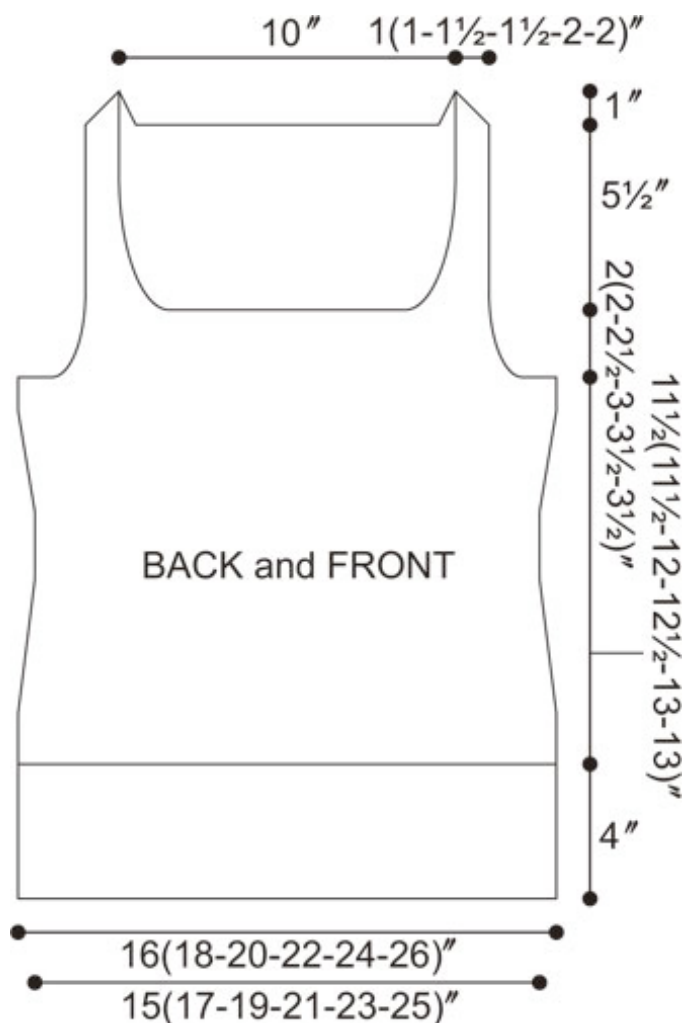
Dec Row (RS): With first hank of yarn, work to 4 sts before neck edge, k2 tog, k2; with second hank of yarn, k2, SSK, work to end. Rep this dec every RS row 5 times more. When all decs have been completed, work even in St st on 6(6-9-9-11-11) sts each side until armholes measure 7½(7½-8-8½-9-9)”, end on WS. Bind off 2(2-3-3-3-3) sts at each armhole edge once, then 2(2-3-3-4-4) sts twice for shoulders.

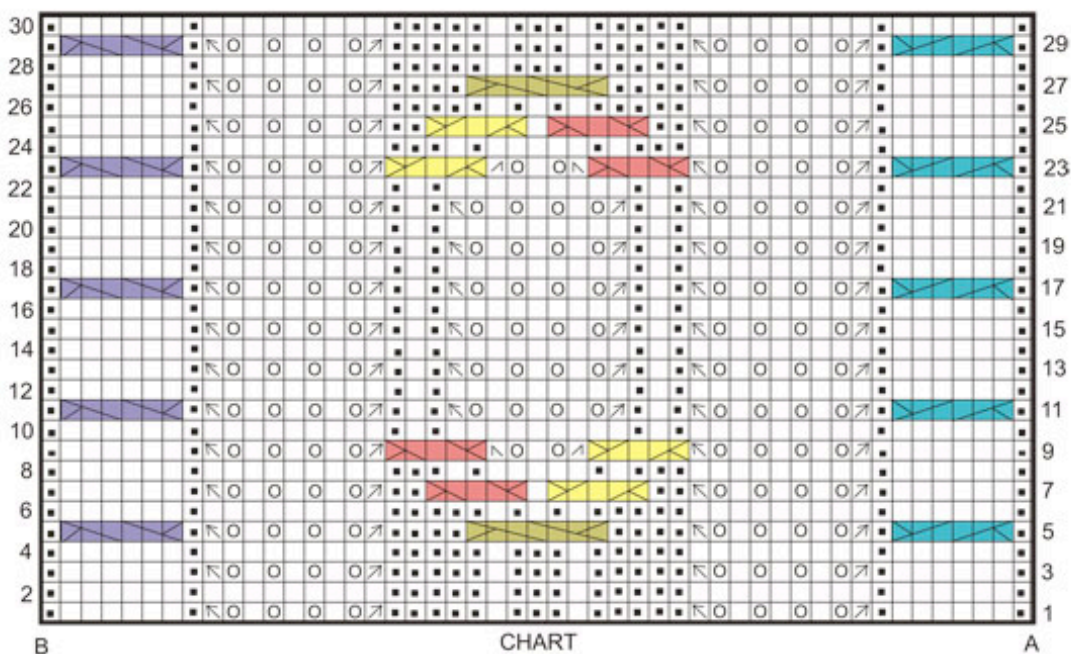
FINISHING

Sew shoulder and side seams.

Neck Edging: With RS facing, using crochet hook, join yarn with a sl st in center of back neck. Work in sc around entire neck edge, join with a sl st in first sc. DO NOT turn. Working from left to right, work in Reverse sc around entire neck edge, join with a sl st in first sc. Fasten off.

Armhole Edgings: Beg at side seams, work same as neck edging.





KEY TO CHART

□ K on RS, p on WS

■ P on RS, k on WS

○ YO

⌞ K3 tog

⌞ SSSK

⌞ K2 tog

⌞ SSK

SI 3 sts to cn and hold in BACK, k3, k3 from cn

SI 3 sts to cn and hold in FRONT, k3, k3 from cn

SI 2 sts to cn and hold in BACK, p1, k1, p1, then k2 from cn

SI 3 sts to cn and hold in FRONT, k2, then p1, k1, p1 from cn

SI 4 sts to cn and hold in FRONT, p1, k1, p1, sl last st from cn to RH needle and knit it, then p1, k1, p1 from cn

HOW TO USE CHART

Rep from A to B twice on RS rows and from B to A twice on WS rows

[Home](#) | [Yarn Shops](#) | [Yarns](#) | [Free KnitBits®](#) | [New This Season](#) | [Free Patterns](#) | [Blog](#) | [Multimedia](#)
[Pattern Corrections](#) | [Abbreviations & Terms](#) | [Links](#) | [Handeze® Glove](#) | [Scarf Central](#)
[About Us](#) | [Privacy Statement](#) | [FAQs](#) | [Contact Us](#)

Berroco, Inc. P.O. Box 367, 14 Elmdale Road, Uxbridge, MA 01569-0367 USA
 copyright 2009 Berroco