

fine handknitting yarns

SEARCH

Go

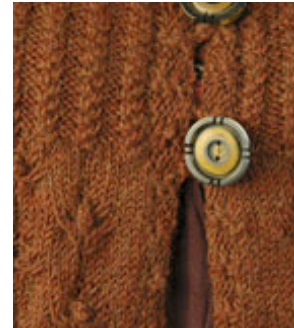
FREE KnitBits

Berroco Blog

Email This Page

FREE
PATTERNS

Rosebud

knit in **Ultra™ Alpaca Light** | [color info](#)
Skill level: **Intermediate**WEB EXCLUSIVE
www.berroco.com

Dainty floral like bobbles adorn Rosebud, a feminine cardigan with a trio of buttons on its textured yoke.



PDF Pattern Instructions

(If you can't open this PDF file you need Adobe Acrobat Reader. Get it [here](#).)

Shown in size Small

SIZES

Directions are for women's size X-Small. Changes for sizes Small, Medium, Large, 1X and 2X are in parentheses.

FINISHED MEASUREMENTS

Bust (closed) – 32(36-40-44-48-52)''

Length – 21 1/2(22-22 1/2-22 1/2-23-23 1/2)''

MATERIALS

10(11-13-15-16-17) Hanks **BERROCO ULTRA ALPACA LIGHT** (50 grs), #4280 Mahogany Mix
Straight knitting needles, size 4 (3.50 mm) OR SIZE TO OBTAIN GAUGE

Crochet hook, size 4.00 mm (F)
Three 1½" buttons

GAUGE

23 sts = 4"; 32 rows = 4" in St st
22 sts = 4"; 28 rows = 4" in Wheat Ear Rib
28 sts = 4"; 32 rows = 4" in Rosebud Pat
TO SAVE TIME, TAKE TIME TO CHECK GAUGE

WHEAT EAR RIB (Multiple of 5 sts + 2)

Row 1 (RS): * P3, insert needle from back to front between 1st and 2nd sts on LH needle and k the 2nd st, then k the 1st and sl both sts from needle tog, rep from * to last 2 sts, end p2.

Row 2: * K3, skip 1 st and p the 2nd st, p the skipped st, then sl both sts from needle tog, rep from * to last 2 sts, end k2.

Rep these 2 rows for Wheat Ear Rib.

View How-to Videos: [Picking Up Stitches](#) | [Button Loop](#) | [4-Stitch Bobble](#)

NOTE

When increasing or decreasing over Rosebud Pat, if there are not enough sts to work an entire RC or LC as shown on chart, work the remaining sts in St st. Drop markers when decreasing. When increasing, return dropped markers to their original places.

BACK

With straight needles, cast on 112(127-142-157-167-182) sts. Work even in Wheat Ear Rib for 3 rows, end on RS. P the next row, dec 1(2-1-2-0-3) sts across – 111(125-141-155-167-179) sts.

Establish Chart: Row 1 (RS): K6(4-3-1-7-4), place marker, work Row 1 of chart to last 6(4-3-1-7-4) sts, place marker, k to end.

Row 2: P to first marker, work Row 2 of chart to last marker, p to end. Work even in pat as established until piece measures 2" from beg, end on WS. Dec 1 st each end of next row, then every 3/4(3/4- 1/2- 1/2- 3/4- 3/4)" 5(5-6-6-5-5) times more – 99(113-127-141-155-167) sts. Work even until piece measures 8" from beg, end on WS. Inc 1 st each end of next row, then every 3/4(3/4- 1/2- 1/2- 3/4- 3/4)" 5(5-6-6-5-5) times more – 111(125-141-155-167-179) sts. Work even until piece measures 13" from beg, end on WS, dec 24(23-29-33-35-37) sts across last row – 87(102-112-122-132-142) sts. From here, work in Wheat Ear Rib.

Shape Armholes: Bind off 5(7-8-10-12-13) sts at beg of the next 2 rows – 77(88-96-102-108-116) sts. Dec 1 st each side every RS row 5(8-9-10-10-11) times – 67(72-78-82-88-94) sts. Work even until armholes measure 7 1/2(8-8 1/2-8 1/2-9-9 1/2)", end on WS.

Shape Shoulders: Bind off 4(5-5-6-7-7) sts at beg of the next 4(2-8-4-2-8) rows, then 3(4-0-5-6-0) sts at beg of the next 4(6-0-4-6-0) rows. Bind off remaining 39(38-38-38-38) sts for back neck.

LEFT FRONT

With straight needles, cast on 52(57-67-72-77-87) sts. Work even in Wheat Ear Rib for 3 rows, p the next row, inc 1(4-0-3-4-2) sts across – 53(61-67-75-81-89) sts.

Establish Chart: Row 1 (RS): K4(8-2-6-0-4), place marker, work Row 1 of chart to last 4(8-2-6-0-4) sts, place marker, k to end.

Row 2: P to first marker, work Row 2 of chart to last marker, p to end. Work even in pat as established until piece measures 2" from beg, end on WS. Dec 1 st at beg of the next row, then at same edge every 3/4(3/4- 1/2-1/2-3/4-3/4)" 5(5-6-6-5-5) times – 47(55-60-68-75-83) sts. Work even until piece measures 8" from beg, end on WS. Inc 1 st at beg of the next row, then at same edge every 3/4(3/4-1/2-1/2-3/4-3/4)" 5(5-6-6-5-5) times more – 53(61-67-75-81-89) sts. Work even until piece measures 13" from beg, end on WS, dec 16(14-15-18-19-22) sts across last row – 37(47-52-57-62-67) sts. Work from here in Wheat Ear Rib.

Shape Armhole: Bind off 5(7-8-10-12-13) sts at beg of the next row – 32(40-44-47-50-54) sts. Work 1 row even. Dec 1 st at beg of the next row, then at same edge 4(7-8-9-9-10) times more – 27(32-35-37-40-43) sts. Work even until armholes measure 5½(6-6½-6½-7-7½)", end on RS.

Shape Neck: Bind off 7(9-9-9-9-9) sts at beg of the next row, then work to end – 20(23-26-28-31-34) sts. Dec 1 st at neck edge every RS row 6 times – 14(17-20-22-25-28) sts. Work even until armhole measures 7 1/2(8-8 1/2-8 1/2-9-9 1/2)", end on WS. Bind off 4(5-5-6-7-7) sts at armhole edge 2(1-4-2-1-4) times,

then 3(4-0-5-6-0) sts 2(3-0-2-3-0) times for shoulder.

RIGHT FRONT

Work to correspond to left front, reversing all shaping and placement of chart. Bind off for armhole on WS row. Dec for armholes at end of RS rows. Bind off for neck on RS row. Dec for neck at beg of RS rows. Bind off for shoulders on WS rows.

SLEEVES

With straight needles, cast on 62 sts. Work even in Wheat Ear Cable for 3 rows, p the next row, dec 1 st at end of the last row – 61 sts.

Establish Chart: Row 1 (RS): K8, place marker, work Row 1 of chart to last 8 sts, place marker, k8.

Row 2: P to first marker, work Row 2 of chart to last marker, p to end. Work in pat as established. When sleeve measures 1", inc 1 st each side, then every $1\frac{1}{2}(1-\frac{3}{4}-\frac{3}{4}-\frac{1}{2}-\frac{1}{2})$ " 10(14-17-21-24-28) times more – 83(91-97-105-111-119) sts. Note: When increasing, add sts to chart as sts become available. Work even until sleeve measures 18" from beg, end on WS, dec 18(19-20-23-24-27) sts across last row – 65(72-77-82-87-92) sts. Work from here in Wheat Ear Rib.

Shape Cap: Bind off 5(7-8-10-12-13) sts at beg of the next 2 rows – 56(58-61-62-63-66) sts. Dec 1 st each side every 4th row 0(0-0-0-2-3) times, every RS row 15(17-18-18-14-12) times, then EVERY row 6(2-0-0-0-0) times, end on WS. Bind off remaining 14(20-25-26-31-36) sts.

FINISHING

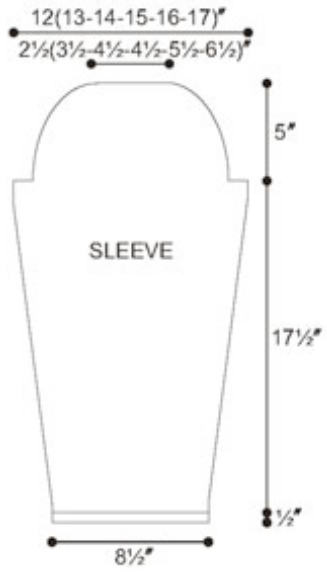
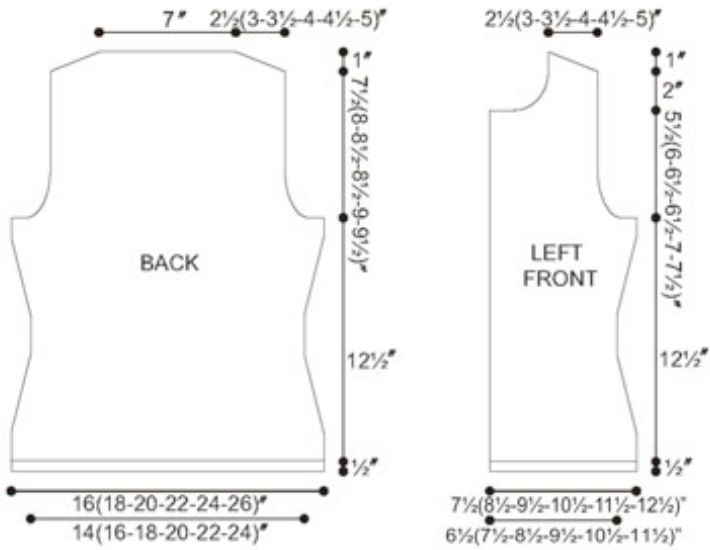
Sew shoulder seams.

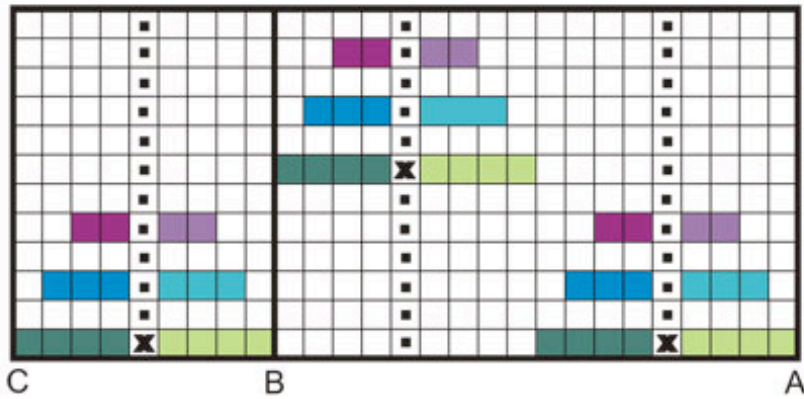
Left Frontband: With RS facing, using straight needles, beg at left neck edge, pick up and k102(102-107-107-112-112) sts. Beg with Row 2, work in Wheat Ear Rib for 3 rows, end on WS. Bind off.

Right Frontband: Beg at lower edge of right front, work to correspond to left frontband.

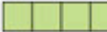





Neckband: With RS facing, using straight needles, beg at right neck edge, pick up and k112 sts around entire neck edge. Complete same as frontbands. Sew in sleeves. Sew side and sleeve seams.

Buttonloop: With RS facing, using crochet hook, join yarn with a sl st to right frontband 1" down from top of neckband. Make a chain $1\frac{1}{2}$ " long. Join with a sl st in top edge of right frontband. In this manner, make 2 more buttonloops, the last at beg of Wheat Ear Rib and the other evenly spaced between. Sew on buttons.





KEY TO CHART

- K on RS, p on WS
- P on RS, k on WS
- Make Bobble - K in front, back front, then back of next st, turn, p4, turn, SSK, k2 tog, turn, p2 tog, turn, p1
-  SI 3 sts to cn and hold in BACK, k1, k3 from cn
-  SI 1 st to cn and hold in FRONT, k3, k1 from cn
-  SI 2 sts to cn and hold in BACK, k1, k2 from cn
-  SI 1 st to cn and hold in FRONT, k2, k1 from cn
-  SI 1 st to cn and hold in BACK, k1, k1 from cn
-  SI 1 st to cn and hold in FRONT, k1, k1 from cn

HOW TO USE CHART

Beg at A, work to B, rep between A and B, end at C

[Home](#) | [Yarn Shops](#) | [Yarns](#) | [Free KnitBits®](#) | [New This Season](#) | [Free Patterns](#) | [Blog](#) | [Multimedia](#)
[Pattern Corrections](#) | [Abbreviations & Terms](#) | [Links](#) | [Handeze® Glove](#) | [Scarf Central](#)
[About Us](#) | [Privacy Statement](#) | [FAQs](#) | [Contact Us](#)

Berroco, Inc. P.O. Box 367, 14 Elmdale Road, Uxbridge, MA 01569-0367 USA

copyright 2009 Berroco