

fine handknitting yarns

SEARCH

Go

FREE KnitBits

Berroco Blog

Email This Page

FREE
PATTERNS

Doll Aran

knit in **Berroco Comfort® DK** | [color info](#)
Skill level: **Intermediate**[rollover to enlarge](#)[rollover to enlarge](#)

Make this coordinating sweater for your little girl's doll.

SIZE

To fit most 18" dolls

**PDF Pattern Instructions**

(If you can't open this PDF file you need Adobe Acrobat Reader. Get it [here](#).)

FINISHED MEASUREMENTS

Chest – 12"

Length – 6"

MATERIALS

2 Balls **BERROCO COMFORT DK** (50 grs), #2740 Seedling

Straight knitting needles, sizes 3 (3.00 mm) and 5 (3.75 mm) OR SIZE TO OBTAIN GAUGE

Crochet hook, size 4.00 mm (F)

2 St markers

WEB EXCLUSIVE
www.berroco.com

Five 1/2" buttons

GAUGE

41 sts = 4"; 35 rows = 4" in Pat St on larger needles
TO SAVE TIME, TAKE TIME TO CHECK GAUGE

DOUBLE SEED STITCH (Even number of sts)

Rows 1 and 2: * K1, p1, rep from * across.

Rows 3 and 4: * P1, k1, rep from * across.

Rep these 4 rows for Double Seed St.

BACK

With smaller needles, cast on 61 sts.

Ribbing: Row 1 (RS): K1, * p1, k1, rep from * across.

Row 2: P1, * k1, p1, rep from * across.

Rep these 2 rows until piece measures 3/4" from beg, end on WS, inc 1 st at end of last row – 62 sts. Change to larger needles and work even, following Chart 1 until piece measures 3 1/2" from beg, end on WS. Mark beg and end of last row for beg of armholes. Work even until piece measures 6" from beg, end on WS. Bind off.

LEFT FRONT

With smaller needles, cast on 31 sts. Work in ribbing same as back for 3/4", end on WS. Change to larger needles and work even, following Chart 1 until piece measures 3 1/2" from beg, end on WS. Mark end of last row for beg of armhole. Work even until piece measures 5" from beg, end on RS.

Shape Neck: Bind off 9 sts, work to end – 22 sts. Dec 1 st at neck edge EVERY row 7 times – 15 sts. Work even if necessary until piece measures 6" from beg, end on WS. Bind off.

RIGHT FRONT

Work to correspond to left front, reversing all shaping. Mark for armhole at beg of last WS row. Bind off for neck on WS row.

SLEEVES

With smaller needles, cast on 31 sts. Work in ribbing same as back for 3/4", end on WS, dec 1 st at end of last row – 30 sts. Change to larger needles.

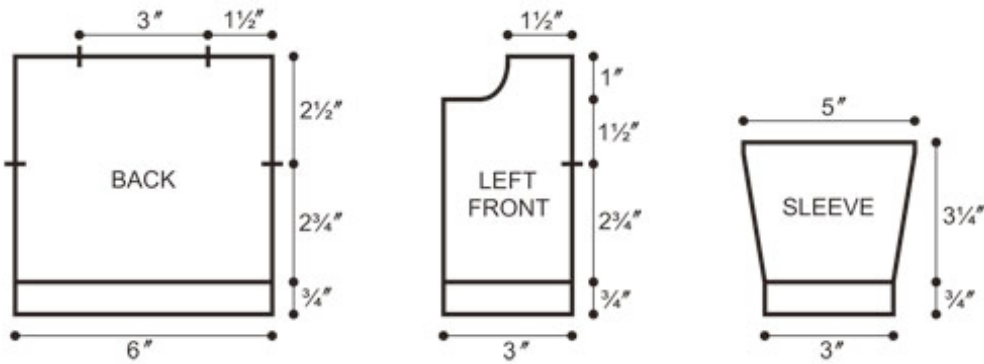
Establish Chart: Row 1 (RS): Work Row 1 of Double Seed St over 2 sts, place marker, work Row 1 of Chart 2 over 26 sts, place marker, work Row 1 of Double Seed St over 2 sts.

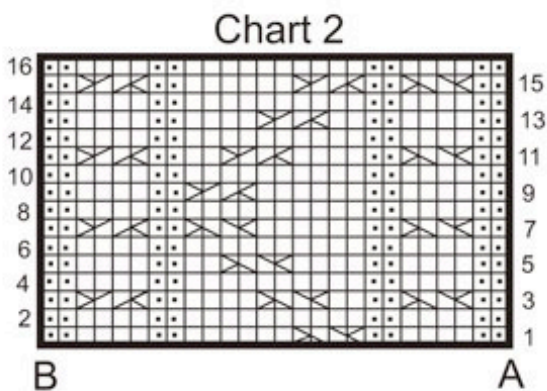
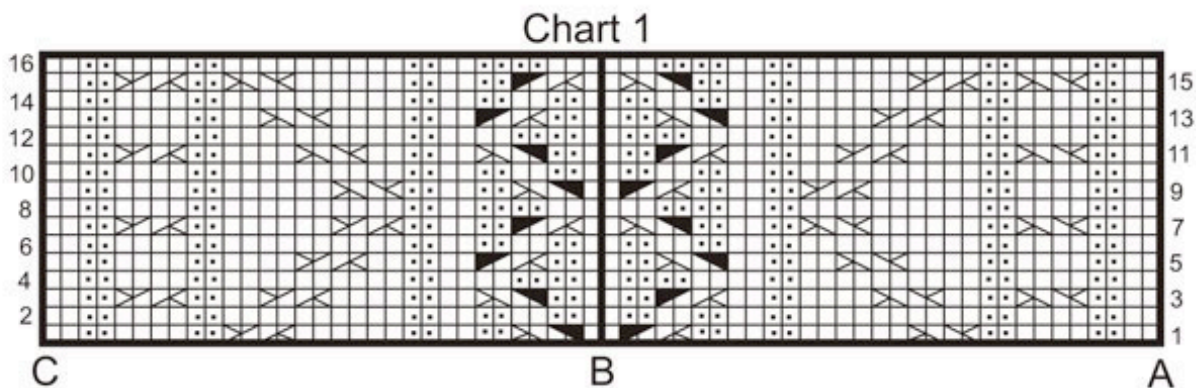
Row 2: Work Row 2 of Double Seed St to first marker, work Row 2 of Chart 2 to last marker, work Row 2 of Double Seed St to end. Work in pat as established, inc 1 st each side every 1/2" 6 times, working incs into Double Seed St as sts become available – 42 sts. Work even until sleeve measures 4" from beg, end on WS. Bind off.

FINISHING

Sew shoulder seams. Sew on sleeves between markers. Sew side and sleeve seams.

Edging: With RS facing, using crochet hook, beg at lower edge of right front, work in sc along right front, neck and left front edges, working 3 sc's in corners of front neck. Turn. Work 1 sc in each sc, working 3 sc's in each corner to beg of right front neck; ch 2, skip 1 sc (buttonloop), continue to work in sc along right front edge, making 4 more buttonloops evenly spaced, the last 2 sc's from lower edge of right front. Fasten off. Sew on buttons.





KEY TO CHARTS

□ K on RS, p on WS

■ P on RS, k on WS

Sl 2 sts to cn and hold in BACK, k2, k2 from cn

Sl 2 sts to cn and hold in FRONT, k2, k2 from cn

Sl 2 sts to cn and hold in BACK, k2, p2 from cn

Sl 2 sts to cn and hold in FRONT, p2, k2 from cn

HOW TO USE CHARTS

For Back: Using Chart 1, work from A to C on RS rows and from C to A on WS rows.

For Left Front: Using Chart 1, work from A to B on RS rows and from B to A on WS rows.

For Right Front: Using Chart 1, work from B to C on RS rows and from C to B on WS rows

For Sleeves: Using Chart 2, work from A to B on RS rows and from B to A on WS rows.

[About Us](#) | [Privacy Statement](#) | [FAQs](#) | [Contact Us](#)

Berroco, Inc. P.O. Box 367, 14 Elmdale Road, Uxbridge, MA 01569-0367 USA
copyright 2009 Berroco