

FREE  
PATTERNS

## Cumulus

knit in **Sundae™** | [color info](#)  
Skill level: **Intermediate**

KNIT

[rollover to enlarge](#)[rollover to enlarge](#)[Schematic](#) | [Chart](#) | [Abbreviations & Terms](#)

Sundae



Find this Yarn

WEB EXCLUSIVE  
www.berroco.com

The Cumulus coat has deep pockets and wide garter button bands that are the perfect canvas for your largest buttons. Puffed elbow length sleeves and a faux Aran diamond add a touch of whimsy.

**PDF Pattern Instructions**

(If you can't open this PDF file you need Adobe Acrobat Reader. Get it [here](#).)

Shown in size Small

**SIZES**

Directions are for women's size X-Small. Changes for sizes Small, Medium, Large, 1X and 2X are in parentheses.

**FINISHED MEASUREMENTS**

Bust (closed) – 32(36-40-44-48-52)''

Length – 28(28-28½ -29-29½-30)'' including neckband

**MATERIALS**

11(12-13-15-16-18) Hanks **BERROCO SUNDAE** (100 grs), #8701 Ale

29'' Length circular knitting needles, sizes 13 (9.00 mm) and 15 (10.00 mm) OR SIZE TO OBTAIN GAUGE

Straight knitting needles, sizes 13 (9.00 mm) and 15 (10.00 mm)

6 St markers

4 St holders

Five 2'' buttons

**GAUGE**

10 sts = 4''; 12 rows = 4'' in St st on larger needles

9 sts = 4''; 13 rows = 4'' worked over Chart A on larger needles

TO SAVE TIME, TAKE TIME TO CHECK GAUGE

**NOTE**

Body of this sweater is worked in one piece to the underarm. Sleeves are then joined and yoke is worked in one piece.

**SEED STITCH** (odd number of sts)

**Row 1 (RS):** K1, \* p1, k1, rep from \* across.

Rep this row for Seed St.

**SLEEVES** (Make 2)

With smaller straight needles, cast on 29(29-32-32-35-35) sts. Knit 6 rows. Change to larger straight needles.

**Inc Row (RS):** K2, \* k in front and back of next st, k2, rep from \* across – 38(38-42-42-46-46) sts. Beg with a p row, work even in St st until sleeve measures 10" from beg, end on WS. Bind off 3 sts at beg of the next 2 rows. Sl remaining 32(32-36-36-40-40) sts onto holder for yoke.

**BODY**

With smaller circular needle, cast on 83(91-99-111-119-127) sts. Knit 12 rows. Change to larger circular needle.

**Establish Pat St: Row 1 (RS):** K9, place marker, work Row 1 of Chart over 19 sts, place marker, work Seed St over 3(7-11-17-21-25) sts, place marker, p1, work Row 1 of Chart over 19 sts, p1, place marker, work Seed St over 3(7-11-17-21-25) sts, place marker, work Row 1 of Chart over 19 sts, place marker, k9.

**Row 2:** K to first marker, work Row 2 of Chart to next marker, work Seed St to next marker, k1, work Row 2 of Chart over 19 sts, k1, work Seed St to next marker, work Row 2 of Chart to last marker, k to end. Work even in pat as established until piece measures 3" from beg, end on WS.

**Buttonhole Row (RS):** K4, bind off 2 sts, work to end.

**Following Row:** Work in pat as established, cast on 2 sts over sts bound off on previous row. Work even in pat as established, making 2 more buttonholes 5" apart. AT THE SAME TIME, when 24 rows of Chart have been completed, end on WS.

**Pocket Openings: Next Row (RS):** K to first marker, p2, k15 sts then sl these sts to holder, p2, work to 5th marker, p2, k15 sts then sl these sts to holder, p2, k to end.

**Following Row (WS):** K to first marker, k2, cast on 15 sts, k2, work to 5th marker, k2, cast on 15 sts, k2, k to end – 83(91-99-111-119-127) sts. Continue to work even in pat as established, making buttonholes as directed, until Chart has been completed twice (48 rows), end on WS. Bind off. Piece should measure approximately 17" from beg. With WS facing, using larger circular needle, pick up and k1 st in each bound-off st of body – 83(91-99-111-119-127) sts.

**Row 1 (RS):** K9, place marker, k to last 9 sts, place marker, k to end.

**Row 2:** K to first marker, p to last marker, k to end. Work even in pat as established until piece measures 2" above picked-up sts, end on RS.

**Shape Armholes: Next Row (WS):** K to first marker, p18(20-21-23-25-27), bind off 6 sts, p until there are 17(21-27-35-39-43) sts on needle after bound-off sts, bind off 6 sts, work to end.

**YOKE**

**Joining Row (RS):** K27(29-30-32-34-36), k32(32-36-36-40-40) sts from first sleeve holder, k17(21-27-35-39-43), k32(32-36-36-40-40) sts from second sleeve holder, k to end – 135(143-159-169-187-195) sts. From here, continue to keep 9 sts at each front edge in Garter St and remaining sts in St st. Work even for 1(1-1½-2-2½-3)", end on WS.

**Dec Row 1 (RS):** K to first marker, \* k3(3-3-1-1-1), k2 tog, rep from \* 4(4-0-0-6-6) times more, (k2, k2 tog) 23(25-34-37-37-39) times, k to end – 107(113-124-133-143-149) sts. Work even for 1", end on WS. Make buttonhole on next row, then work even until piece measures 3" above last dec row, end on WS.

**Dec Row 2 (RS):** K to first marker, \* k2(2-2-0-0-0), k2 tog, rep from \* 4(4-0-0-6-6) times more, (k1, k2 tog) 23(25-34-37-37-39) times, k to end – 79(83-89-95-99-103) sts. Work even for 3", end on WS.

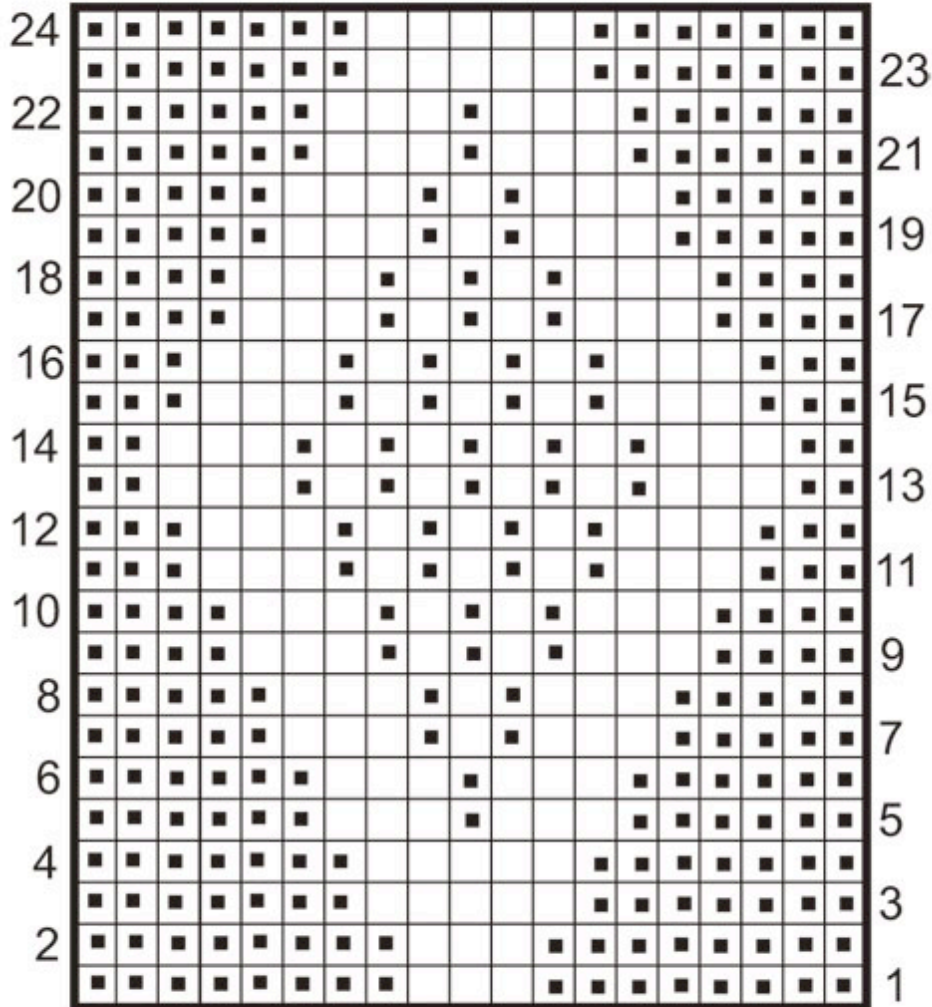
**Dec Row 3 (RS):** K5, bind off 2 sts, k to first marker, \* k1(1-1-0-0-0), k2 tog, rep from \* 4(4-0-0-0-0) times more, k2 tog 23(25-34-36-30-32) times, k3 tog 0(0-0-1-7-7) times, k to end – 51(53-54-57-55-57) sts. Work even in Garter St for 2", end on WS. Bind off.

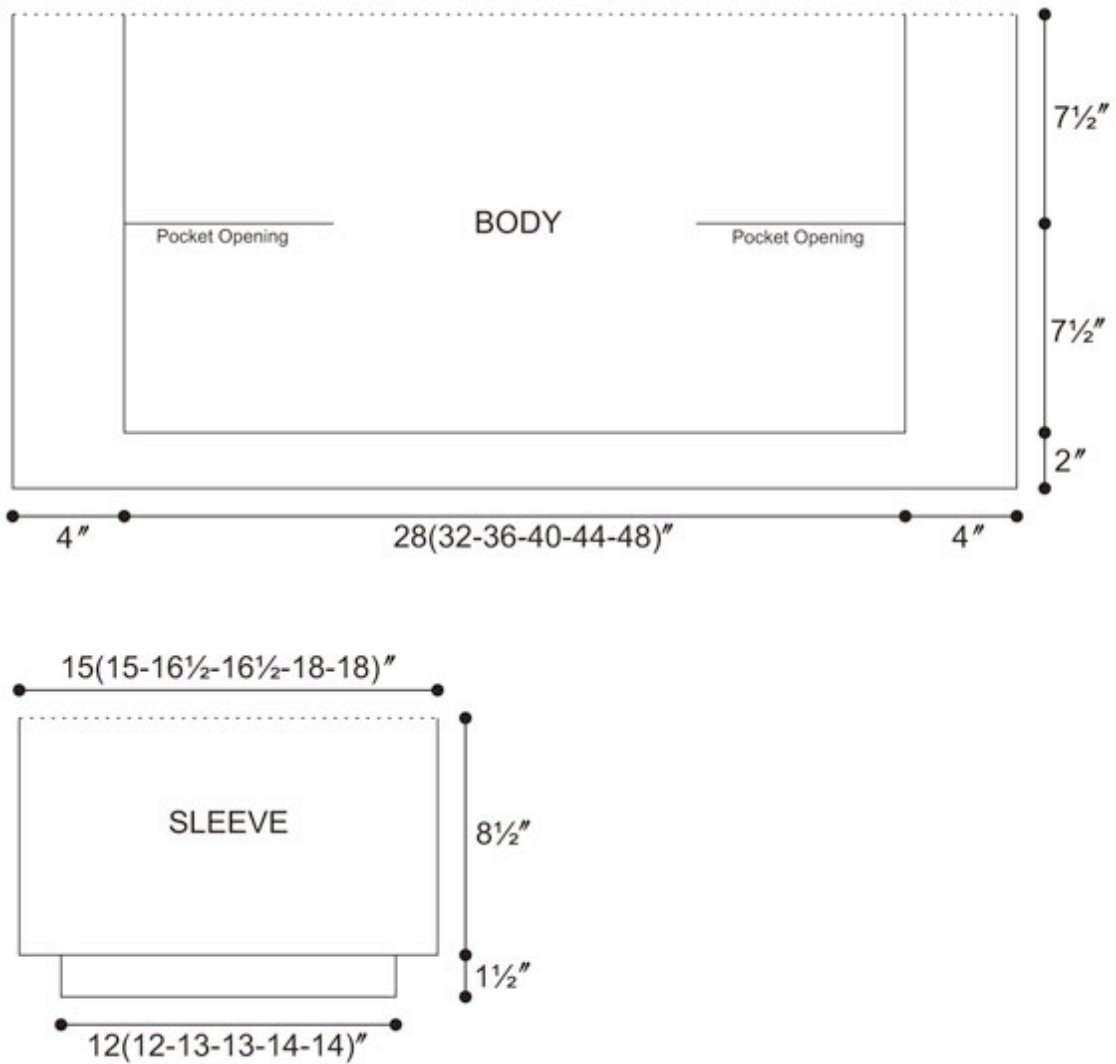
**FINISHING**

Sew underarm and sleeve seams.

**Pocket Linings (Make 2):** With WS facing, sl 15 sts from holder to larger straight needle. Knit 1 row on WS. Work even in St st for 7", end on RS. Knit 1 row on WS for turning ridge. Work even in St st for 7", end on WS. Bind off. Fold pocket lining in half along turning ridge and sew side edges tog. Sew bound-off edge of pocket lining to sts cast-on at top of pocket. Sew on buttons.

### CHART





[Home](#) | [Yarn Shops](#) | [Yarns](#) | [Free KnitBits®](#) | [New This Season](#) | [Free Patterns](#) | [Blog](#) | [Multimedia](#)  
[Pattern Corrections](#) | [Abbreviations & Terms](#) | [Links](#) | [Handeze® Glove](#) | [Scarf Central](#)  
[About Us](#) | [Privacy Statement](#) | [FAQs](#) | [Contact Us](#)

Berroco, Inc. P.O. Box 367, 14 Elmdale Road, Uxbridge, MA 01569-0367 USA  
 copyright 2009 Berroco