

FREE
PATTERNS

Corsica

knit in **Pure® Pima** | **color info**
Skill level: **Intermediate**



[Chart](#) | [Schematic](#) |
[Abbreviations & Terms](#)



[Download the free Pure® Pima eBook](#)



Corsica is a curve flattering garment that is worked in several directions. The center lace panel rises from the lower hem while the sides are picked up and knit at a perpendicular angle.



PDF Pattern Instructions

(If you can't open this PDF file you need Adobe Acrobat Reader. Get it [here](#).)

SIZES

Directions are for women's size X-Small. Changes for sizes Small, Medium, Large, 1X and 2X are in parentheses.

Shown in size small

FINISHED MEASUREMENTS

Bust – 32(36-40-44-48-52)"
Center Length – 24(24-25-25½-26½-27)"
Side Length – 28½(28½-29½-30-31-31½)"

MATERIALS

9(10-11-12-13-14) Hanks **BERROCO PURE PIMA** (50 grs), #2224 Beech
Straight knitting needles, sizes 5 (3.75 mm) and 6 (4.00 mm) OR SIZE TO OBTAIN GAUGE
29" and 16" Length circular knitting needles, size 6 (4.00 mm)

1 St marker

GAUGE

22 sts = 4"; 26 rows = 4" in St st on larger needles

19 sts = 4"; 30 rows = 4" in charted pat on smaller needles

TO SAVE TIME, TAKE TIME TO CHECK GAUGE

NOTE

Center panels of back and front are worked from bottom to top, then sewn tog at shoulders.

Side/Sleeve sections are then picked up from lower front edge to lower back edge and worked sideways to sleeve cuffs. Side edges will measure 4½" longer than center section.

BACK CENTER PANEL

With straight needles, cast on 43 sts. Work even following chart until 67 rows have been completed. Change to larger straight needles and St st. Inc 1 st each end on next RS row, then every 6th row 5 times more – 55 sts. Work even until piece measures 24(24-25-25½-26½-27)" from beg, end on WS. Bind off.

FRONT CENTER PANEL

Work same as back center panel until piece measures 22(22-23-23½-24½-25)" from beg, end on WS.

Shape Neck: Next Row (RS): K14, join another hank of yarn and bind off center 27 sts, k to end. Working both sides at once, dec 1 st at each neck edge EVERY row 8 times. Work even on 6 sts each side until piece measures 24(24-25-25½-26½-27)" from beg, end on WS. Bind off. Sew shoulder seams.

LEFT SIDE/SLEEVE SECTION With RS facing, using longer circular needle, beg at lower edge of front center panel, pick up and 156(156-162-165-170-173) sts along left side of front center panel to shoulder, then 156(156-162-165-170-173) sts along left side of back center panel to lower edge – 312(312- 324-330-340-346) sts. Beg with a p row, work even in St st for 3(4-5-6-7-8)", end on WS.

Shape Sides: Bind off 106(106-110-110-113- 113) sts at beg of the next 2 rows – 100(100- 104-110-114-120) sts.

Left Sleeve: Continuing to work in St st, dec 1 st each side EVERY row 13(13-11-11-11-11) times, then every RS row 4(4-5-5-5-5) times, end on WS – 66(66-72-78-82-88) sts. Dec 1 st each side every RS row 0(0-0-2-6-12) times, every 4th row 0(0-4-9-7-4) times, every 6th row 0(0-4-0-0-0) times, then every 8th row 5(5-0-0-0-0) times – 56 sts. Work even until sleeve measures 12" from bound-off sts of sides, end on WS. Bind off.

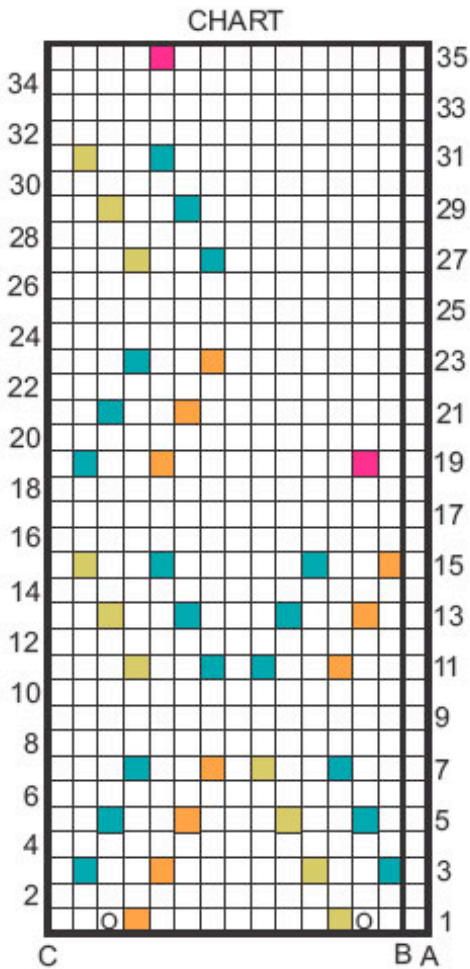
RIGHT SIDE/SLEEVE SECTION

Beg at lower back center section, work same as left side/sleeve section.

FINISHING

Sew side and sleeve seams.

Neckband: With RS facing, using shorter circular needle, beg at left shoulder seam, pick up and k94 sts around entire neck edge. Mark for beg of rnd and carry marker up. Work in St st (k EVERY rnd) for 1". Bind off.

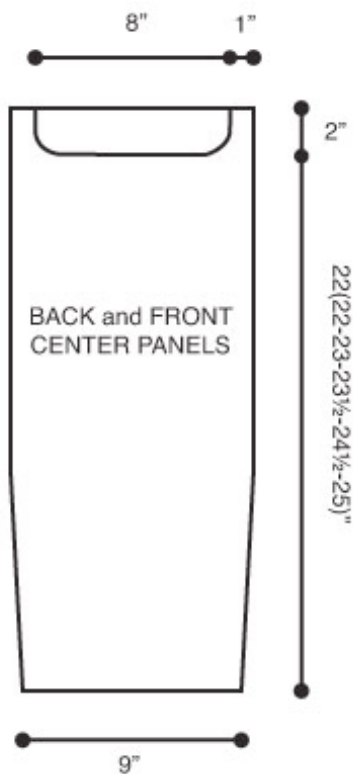
**KEY TO CHART**

- K on RS, p on WS
- Yo
- SSK
- K2 tog
- M1k
- Drop st off needle and allow it to unravel back to beg. Sl strand left by unraveled st back onto LH needle and k this st

HOW TO USE CHART

Beg at A, work to C, rep between B and C, end at C on RS rows.
 Beg at C, work to B, rep between B and C, end at A on WS rows.

Work Rows 1 - 18 once, rep Rows 3 - 18 twice more, then work Rows 19 - 35 once.



[Home](#) | [Yarn Shops](#) | [Yarns](#) | [Free KnitBits®](#) | [New This Season](#) | [Free Patterns](#) | [Blog](#) | [Multimedia](#)
[Pattern Corrections](#) | [Abbreviations & Terms](#) | [Links](#) | [Handeze® Glove](#) | [Scarf Central](#)
[About Us](#) | [Privacy Statement](#) | [FAQs](#) | [Contact Us](#)

Berroco, Inc. P.O. Box 367, 14 Elmdale Road, Uxbridge, MA 01569-0367 USA
copyright 2010 Berroco