

FREE
PATTERNS

Coretto

knit in [Berroco Voyage™](#) & [Berroco Nanuk™](#) | [color info](#)

Skill level: [Easy](#)



[click to enlarge](#)



[click to enlarge](#)

[Schematic](#) | [Chart](#) | [Abbreviations & Terms](#)

[Berroco Voyage](#)

[Find this Yarn](#)

[Berroco Nanuk](#)

[Find this Yarn](#)



Colorwork bands of Voyage are alternated with Nanuk's fur-like texture in this fashion forward cardigan.



PDF Pattern Instructions

(If you can't open this PDF file you need Adobe Acrobat Reader. Get it [here](#).)

Shown in size Small

SIZES

Directions are for women's size X-Small. Changes for sizes Small, Medium, Large, 1X and 2X are in parentheses

FINISHED MEASUREMENTS

Bust (closed) – 34(38-42-46-50-54)"

Length – 31½(32-32½-32½-33-33½)"

Note: This garment was designed with a slightly oversized fit. Please take this into consideration when selecting your size

MATERIALS

3(4-4-5-5-5) Hanks **BERROCO VOYAGE** (50 grs), #4030 Satchel (A) and 5(5-6-6-7-7) hanks #4018 Charcoal (B)

6(6-7-8-9-9) Balls **BERROCO NANUK** (50 grs), #5403 Narwhal (C)

Straight knitting needles, sizes 8 (5.00 mm) and 10 (6.00 mm) OR SIZE TO OBTAIN GAUGE

29" Length circular knitting needle, size 8 (5.00 mm)

GAUGE

18 sts = 4"; 26 rows = 4" in St st with A or B on larger needles

14 sts = 4"; 22 rows = 4" in St st with C on larger needles

TO SAVE TIME, TAKE TIME TO CHECK GAUGE

NOTE 1

Due to the difference in gauge, Nanuk sections will measure wider than Voyage sections. This is intended. Just match up the sections when sewing seams.

NOTE 2

Starting and ending points of chart given are for the first repeat of chart. It will be necessary to adjust these points as you increase or decrease. It will also be necessary to adjust Rows 5 and 6 as you increase or decrease.

PATTERN STITCH (Multiple of 3 sts + 1)

Row 1 (RS): With C, knit.

Row 2: With C, purl.

Row 3: With A, knit.

Row 4: With A, purl.

Rows 5 and 6: With B, k1, * sl 2 WYIB, k1, rep from * across.

Row 7: With A, knit.

Row 8: With A, purl.

Rows 9 – 14: With B, purl.

Rep these 14 rows for Pat St.

BACK

With smaller straight needles, using A, cast on 94(106-114-126-134-146) sts.

Ribbing: Row 1 (RS): K2, * p2, k2, rep from * across.

Row 2: P2, * k2, p2, rep from * across. Rep these 2 rows once more, then change to B and work even in ribbing as established until piece measures 2" from beg, end on RS. Change to larger needles and p the next row, dec 8(10-10-12-12-14) sts across – 86(96-104-114-122-132) sts. Change to C and work even in St st until piece measures 5" from beg, end on RS. Change to A and B and work in St st, following chart for 13 rows, end on WS, dec 1 st at end (each end – at end – each end – at end – each end) of last row – 85(94-103-112-121-130) sts. Change to C and work even in Pat St for 28 rows (2 repeats). Continue to repeat this pat sequence (3" St st with C, 13 rows chart, then 28 rows Pat St) to shoulder. AT THE SAME TIME, dec 1 st each side every 3¼" 4 times – 77(86-95-104-113-122) sts. Work even until piece measures 23" from beg, end on WS.

Shape Armholes: Bind off 3(4-4-5-6-6) sts at beg of the next 2 rows, then 2 sts at beg of the following 2 rows – 67(74-83-90-97-106) sts. Dec 1 st each side every RS row 4(6-8-9-10-12) times – 59(62-67-72-77-82) sts. Work even until armholes measure 7½(8-8½-8½-9-9½)", end on WS.

Shape Shoulders: Bind off 5(6-7-7-8-10) sts at beg of the next 2 rows, then 6(6-7-8-9-9) sts at beg of the next 4 rows. Bind off remaining 25(26-25-26-25-26) sts for back neck.

LEFT FRONT

With smaller needles, using A, cast on 46(50-54-58-66-70) sts. Work in ribbing same as back for 2", end on RS. Change to larger needles and p the next row, dec 6(6-6-6-8-8) sts across – 40(44-48-52-58-62) sts. Change to C and work even in St st until piece measures 5" from beg, end on RS. Change to A and B and work 13 rows of chart, end on RS, dec 0(1-1-0-0-1) st at end(at end – each end – at end – at end – at end) of last row – 40(43-46-52-58-61) sts. Work 28 rows of Pat St (2 repeats). Continue to repeat this pat sequence (3" St st with C, 13 rows of chart, then 28 rows Pat St) to shoulder. AT THE SAME TIME, dec 1 st at side edge (beg of RS rows) every 3¼" 4 times – 36(39-42-48-54-57) sts. Work even until piece measures 21" from beg, end on WS.

Shape Neck: Next Row (RS): Work to last 3 sts, SSK, k1 – 35(38-41-47-53-56) sts. Rep this dec every 1" 9(8-6-8-9-8) times more. AT THE SAME TIME, when piece measures 23" from beg (before all neck decs

have been completed), end on WS. Shape armhole same as back. When all armhole and neck decs have been completed, work even on 17(18-19-23-26-28) sts until armhole measures

7½(8-8½-8½-9-9½)" , end on WS. Bind off 5(6-7-7-8-10) sts at armhole edge once, then 6(6-7-8-9-9) sts twice for shoulder.

RIGHT FRONT

Work to correspond to left front, reversing all shaping. Work side decs at end of RS rows. Work neck decs at beg of RS rows as k1, k2 tog. Bind off for armhole on WS rows. Work armhole decs at end of RS rows. Bind off for shoulder on WS rows.

SLEEVES

With smaller straight needles, using A, cast on 50 sts. Work in ribbing same as back for 2", end on RS. Change to larger needles and p the next row, dec 6 sts across – 44 sts. Work in same pat sequence as back (3" St st with C, 13 rows chart, then 28 rows Pat St). AT THE SAME TIME, inc 1 st each side every 3(2-1½-1¼-1-¾)" 5(7-10-12-14-16) times – 54(58-64-68-72-76) sts. Work even until sleeve measures 18" from beg, end on WS.

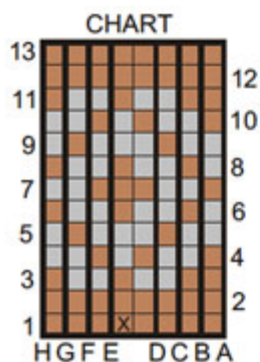
Shape Cap: Bind off 3(4-4-5-6-6) sts at beg of the next 2 rows, then 2 sts at beg of the following 2 rows – 44(46-52-54-56-60) sts. Dec 1 st each side every RS row 14(14-16-16-18-18) times, end on WS – 16(18-20-22-20-24) sts. Bind off 4(3-4-5-4-4) sts at beg of the next 2 rows. Bind off remaining 8(12-12-12-12-16) sts.

FINISHING

Sew shoulder seams. Sew in sleeves. Sew side and sleeve seams, matching pat.

Left Front/Neckband: With RS facing, using circular needle and B, beg at center back neck, pick up and k174(178-182-182-186-190) sts along back neck, front neck and front edge. Beg with Row 2, work in ribbing same as back for 1", end on WS. Change to A and work in ribbing as established for ½", end on WS. Bind off in ribbing.

Right Front/Neckband: Beg at lower right front edge, work to correspond to left front/neckband. Sew edges of neckbands together at center back neck.



KEY TO CHART

- #4030 A
- #4018 B
- X Center of sleeve

HOW TO USE CHART

For Back:

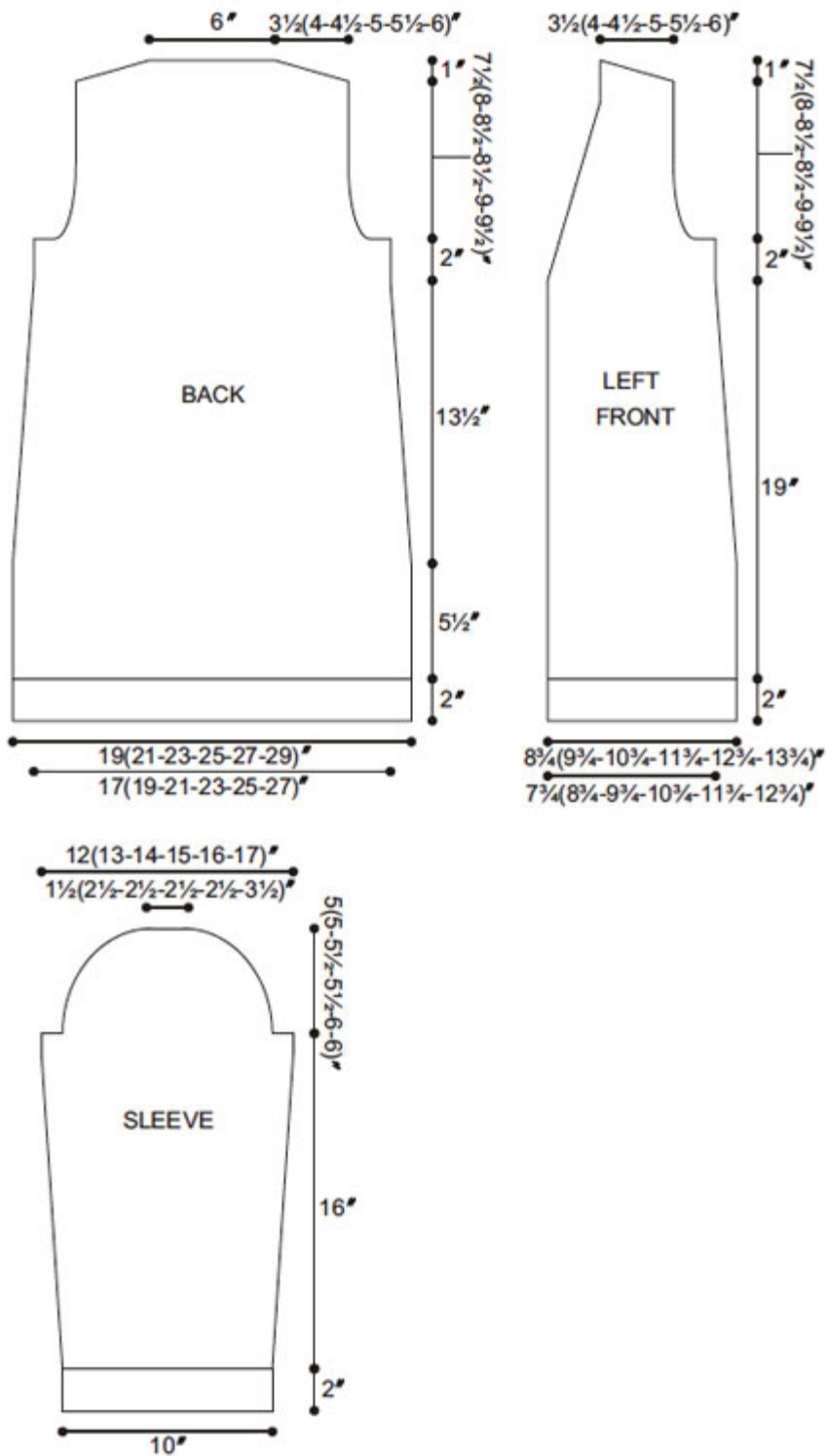
- X-S - Beg at E, work to H, rep between A and H, end work A to D
- S and M - Rep from A to H
- L and 1X - Beg at G, work to H, rep between A and H, end work A to B
- 2X - Beg at F, work to H, rep between A and H, end work A to C

Fronts:

- XS and M - Rep from A to H
- S and L - Beg at F, work to H, rep between A and H, end work A to C
- 1X - Beg at G, work to H, rep between A and H, end work A to B
- 2X - Beg at E, work to H, rep between A and H, end work A to D

Sleeves:

Center chart with X at center of sleeve



WEB EXCLUSIVE

www.berroco.com

[Home](#) | [Yarn Shops](#) | [Yarns](#) | [Free KnitBits®](#) | [New This Season](#) | [Free Patterns](#) | [Blog](#) | [Multimedia](#)
[Pattern Corrections](#) | [Abbreviations & Terms](#) | [Links](#) | [Handeze® Glove](#)
[About Us](#) | [Privacy Statement](#) | [FAQs](#) | [Contact Us](#)

Berroco, Inc. 1 Tupperware Dr. Suite 4, N. Smithfield, RI 02896-6815 USA
 copyright 2011 Berroco