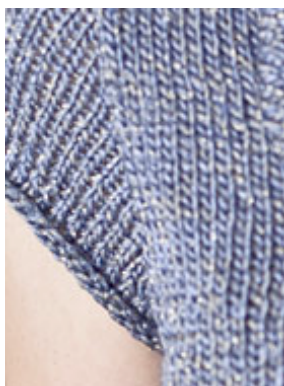


FREE
PATTERNS

Anjou

knit in **Pure® Pima** | **color info**
Skill level: **Easy****Schematic** | **Abbreviations & Terms****Download the free Pure® Pima eBook**

Anjou is a dressy version of your favorite t-shirt. Cap sleeves and a cute cinched cowl collar create an adorable top that you can easily dress up or down.

**PDF Pattern Instructions**

(If you can't open this PDF file you need Adobe Acrobat Reader. Get it [here](#).)

SIZES

Directions are for women's size X-Small. Changes for sizes Small, Medium, Large, 1X and 2X are in parentheses.

Shown in size small.

FINISHED MEASUREMENTS

Bust – 32(36-40-44-48-52)''

Length – 22(22-23-23½-24-24½)''

MATERIALS

8(9-10-11-11-12) Hanks **BERROCO PURE PIMA** (50 grs), #2246 Delft

Straight knitting needles, sizes 4 (3.50 mm) and 6 (4.00 mm) OR SIZE TO OBTAIN GAUGE

29'' Length circular knitting needle, size 6 (4.00 mm)

2 Double pointed knitting needles (dpn), size

4 (3.50 mm)

- 1 St marker
- 1 Safety pin

GAUGE

22 sts = 4"; 26 rows = 4" in St st on larger needles

TO SAVE TIME, TAKE TIME TO CHECK GAUGE

BACK

With smaller straight needles, cast on 110(122- 134-146-158-170) sts.

Ribbing: Row 1 (RS): K2, * p2, k2, rep from * across.

Row 2: P2, * k2, p2, rep from * across. Rep these 2 rows until piece measures 1½" from beg, end on RS. Change to larger straight needles and p the next row, dec 22(22-24-24-26-26) sts across – 88(100-110-122-132-144) sts. Work even in St st until piece measures 4(4-4½-4½-5-5)" from beg, end on WS.

Dec Row (RS): K1, k2 tog, k to last 3 sts, SSK, k1 – 86(98-108-120-130-142) sts. Rep this dec every 1¾" twice more – 82(94-104-116-126-138) sts. Work even until piece measures 9½(9½-10-10-10½-10½)" from beg, end on WS. Inc Row (RS): K1, M1k, k to last st, M1k, k1 – 84(96-106-118-128-140) sts. Rep this inc every 1½" etwice more – 88(100-110-122-132-144) sts. Work even until piece measures 13½(13½- 14-14-14½-14½)" from beg, end on WS.

Shape Armholes: Bind off 4(6-7-8-10-10) sts at beg of the next 2 rows, then 0(4-4-4-4-4) sts at the beg of the next 2 rows – 80(80-88-98- 104-116) sts.

Dec Row (RS): K1, k2 tog, k to last 3 sts, SSK, k1 – 78(78-86-96-102-114) sts. Rep this dec every RS row 6(6-7-9-10-13) times more – 66(66-72- 78-82-88) sts. Work even until armholes measure 7½(7½-8-8½-8½-9)", end on WS.

Shape Shoulders: Bind off 6(6-7-8-8-9) sts at beg of the next 2 rows, then 5(5-6-7-8-9) sts at beg of the next 4 rows. Bind off remaining 34 sts for back neck.

FRONT

Work same as front until armholes measure approximately 2(2-2½-3-3-3½)", end on WS.

Shape Neck: Next Row (RS): Mark center 10 sts. Cont armhole shaping as for back if necessary and work to marker, join another hank of yarn and bind off center 10 sts, k to end. Working both sides at once, dec 1 st at each neck edge every RS row 12 times. Work even on 16(16-19-22-24-27) sts each side until armholes measure 7½(7½-8-8½-8½-9)", end on WS. Bind off 6(6-7-8-8-9) sts at each armhole edge once, then 5(5-6-7-8-9) sts twice for shoulders.

SLEEVES

With larger straight needles, cast on 66(66-72- 78-82-88) sts. Work even in St st for 1", end on WS.

Shape Cap: Bind off 4(6-7-8-10-10) sts at beg of the next 2 rows, then 0(4-4-4-4-4) sts at the beg of next 2 rows – 58(46-50-54-54-60) sts. Dec 1 st each side every RS row 9(10-10-10-10- 10) times, end on WS – 40(26-30-34-34-40) sts. Bind off 2 sts at beg of the next 2 rows, then 3 sts at beg of the next 2(0-2-2-2-2) rows, then 4 sts at beg of next 4(2-0-0-0-0). Bind off remaining 14(14-20-24-24-30) sts.

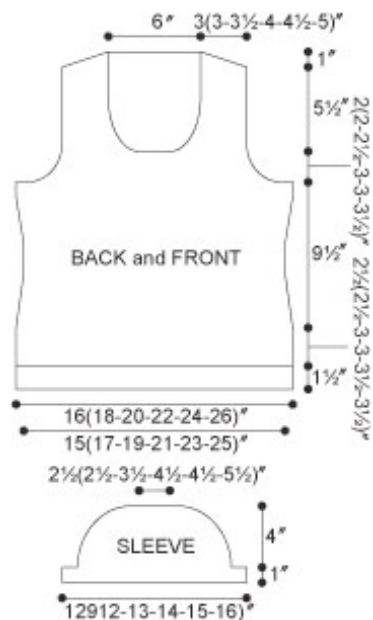
FINISHING

Sew shoulder seams.

Collar: With RS facing, using circular needle, beg at center back neck, pick up and k16 sts to left shoulder seam, 28 sts along left front neck edge, 10 sts across front neck edge, 28 sts along right front neck edge, then 16 sts across > remaining back neck edge – 98 sts. Mark for beg of rnd and carry marker up. Knit 1 rnd, inc 62 sts around – 160 sts. Work even in St st (k EVERY rnd) until collar measures 7". Bind off. Fold edge 1" under to RS and sew in place forming casing, leaving 1" open at center front for drawstring.

Drawstring: With dpn's, cast on 3 sts and make I-Cord as follows:

Row 1: * K3, do not turn work. Slide sts to beg of needle to work next row from RS. Rep from * until drawstring measures 54". Fasten off. Fasten safety pin through one end of drawstring. Insert pin through opening at front of collar and pull through casing and back out of opening. Tie as in photo.



[Home](#) | [Yarn Shops](#) | [Yarns](#) | [Free KnitBits®](#) | [New This Season](#) | [Free Patterns](#) | [Blog](#) | [Multimedia](#)
[Pattern Corrections](#) | [Abbreviations & Terms](#) | [Links](#) | [Handeze® Glove](#) | [Scarf Central](#)
[About Us](#) | [Privacy Statement](#) | [FAQs](#) | [Contact Us](#)

Berroco, Inc. P.O. Box 367, 14 Elmdale Road, Uxbridge, MA 01569-0367 USA
 copyright 2010 Berroco