

# Marcy

Designed by the Berroco Design Team



## finished measurements

Approximately 36" wide x 50" long  
(after blocking)

## yarn

**BERROCO COMFORT DK** (50 grs):  
10 balls #2702 Pearl

## needles and notions

29" circular needle, size 6  
(4.00 mm) or size to obtain gauge

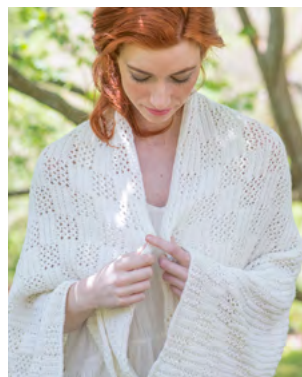
## gauge

21 sts and 36 rows = 4" in charted  
pattern (after blocking)

*To save time, take time to check  
gauge*

Berroco Comfort® DK

Find this Yarn 



BERROCO®

[www.berroco.com](http://www.berroco.com)

**NOTE:** We recommend using yarns called for in our instructions. Every effort has been made to ensure that directions contained in this book are accurate and complete, however errors do occur. We cannot be responsible for variance of individual knitters, human or typographical errors.

All pattern PDFs are updated when corrections are made. In the event of finding an error, please make sure you've downloaded the most recent version.

## SHAWL or BLANKET

With circular needle, cast on 190 sts. DO NOT join. Knit 1 row on WS. Work even, following chart until 32 rows of chart have been completed a total of 14 times, end on WS with Row 32 of chart. Bind off.

## FINISHING

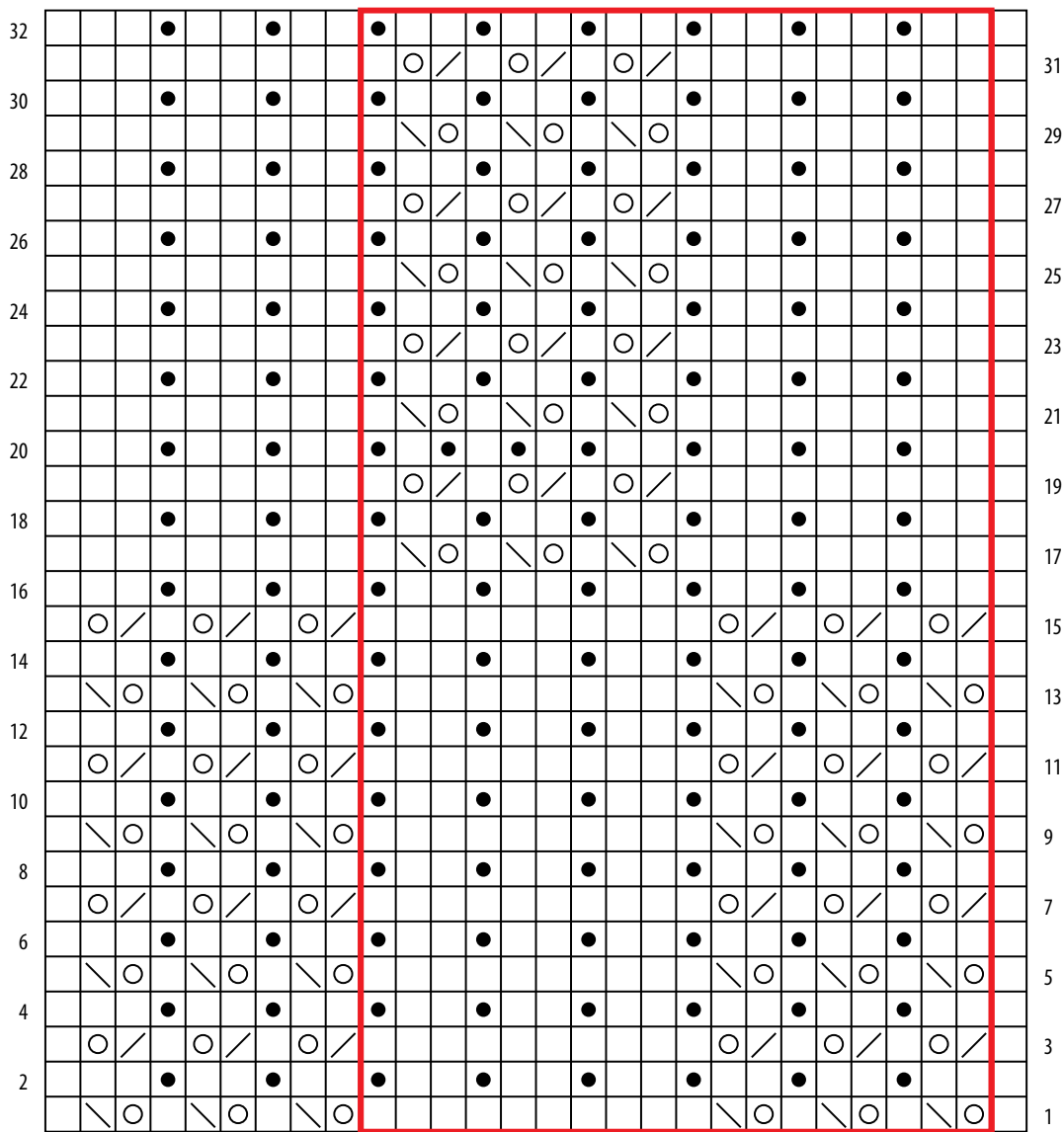
Weave in all ends and block as desired.



## ABBREVIATIONS & TERMS

- k:** knit
- k2tog:** knit 2 stitches together
- RS:** right side
- SSK:** Slip 2 stitches knitwise, insert point of left hand needle through fronts of these 2 stitches and knit 2 together.
- st(s):** stitch(es)
- WS:** wrong side

MARCY CHART



18-stitch pattern repeat work 10 times

KEY TO CHART

- knit on RS; purl on WS
- purl on RS; knit on WS
- yarn over
- k2tog
- SSK
- pattern repeat

CHART NOTES

Work from right to left on RS rows, and from left to right on WS rows, working the 18-stitch pattern repeat 10 times on each row.

Love Berroco patterns?  
Sign up for our KnitBits® newsletter.

