

Love Berroco patterns? Sign up for our [KnitBits® newsletter](#).

skill level: Intermediate
Shown in size Small

sizes

Directions are for women's size X-Small. Changes for sizes Small, Medium, Large, 1X and 2X are in parentheses

To Fit Bust Size: 30(34-38-42-46-50)"

finished measurements

Bust - 36(40-44-48-52-56)"

Length - 22(22-23-23-24-24½)"

Note: This garment was designed with approximately 6" of ease.

Please take this into consideration when selecting your size

materials

6(7-8-9-10-11) Hanks [BERROCO](#)

[FUJI](#) (50 grs), #9203 Sandy

Straight knitting needles, size 7 (4.50 mm) OR SIZE TO OBTAIN GAUGE

Spare straight knitting needle, size 7 (4.40 mm)

4 St markers

4 St holders

gauge

20 sts = 4"; 28 rows = 4" in St st

TO SAVE TIME, TAKE TIME TO CHECK GAUGE

Free Pattern



Berroco Fuji™



Find this yarn at your LYS

Our supercharged store locator goes above and beyond the ordinary. Innovatively linked to our inventory system, search for a yarn in your area and you'll pinpoint LYS's that have a proven history of ordering that product. A handy listing of all of the Berroco yarns the store carries and easy access to driving directions are also right at your finger tips. [Find all yarns now.](#)

Don't forget to connect with us on social media!



NOTE: We recommend using yarns called for in our instructions. Every effort has been made to ensure that directions contained in this book are accurate and complete, however errors do occur. We cannot be responsible for variance of individual knitters, human or typographical errors.

All pattern PDFs are updated when corrections are made. In the event of finding an error, please make sure you've downloaded the most recent version.

NOTE

Sleeves and yoke are worked from side to side in 2 pieces, starting at sleeve cuffs and ending at center. Pieces are joined in center of front and back yoke, then back and front are picked up and worked down.

SLEEVE/YOKE (Make 2)

Cast on 60 sts.

Set-Up Row (WS): P3, place marker, p12, place marker, p30, place marker, p12, place marker, p3.

Establish Chart A: Row 1 (RS): (K to marker, work Row 1 of Chart A to next marker) twice, k to end.

Row 2: (P to first marker, work Row 2 of Chart A to next marker) twice, p to end. Work even in pat as established until sleeve measures 1" from beg, end on WS.

Inc Row (RS): K2, M1k, work to last 2 sts, M1k, k2 - 62 sts. Rep this inc every $1(1-\frac{3}{4}-\frac{3}{4}-\frac{3}{4}-\frac{1}{2})$ " 11(11-12-12-14-16) times more - 84(84-86-86-90-94) sts. Work even until sleeve measures 13" from beg end on WS. Mark beg and end of last row for beg of yoke. Work even until piece measures $\frac{1}{2}(1-2-3-4-5)$ " above markers end on WS, dropping all markers on last row.

Establish Chart B: Row 1 (RS): K2(2-3-3-5-7), place marker, work Row 1 of Chart B over 38 sts, place marker, k4, place marker, work Row 1 of Chart B over 38 sts, place marker, k2(2-3-3-5-7).

Row 2: P to first marker, work Row 2 of Chart B to next marker, p to next marker, work Row 2 of Chart B to last marker, p to end. Work even in pat as established until piece measures 3(4-5-6-7-8)" above markers, end on WS.

Divide For Neck: Next Row (RS): K to first marker, work Chart B to next marker, k2, join another hank of yarn, with second hank, k2, work Chart B to next marker, k to end.

Following Row: Working both sides at once, with first hank, p to first marker, work Chart B to next marker, p2; with second hank, p2, work Chart B to next marker, p to end. Work even in pat as established until Chart B has been completed twice (52 rows total), end on WS. Discontinue Chart B and work Chart C over 38 sts between markers on each section. Work even until piece measures 9(10-11-12-13-14)" above markers, end on WS. Sl first 42(42-43-43-45-47) sts to one holder and second 42(42-43-43-45-47) sts to second holder.

FINISHING

When both sleeve/yoke sections have been completed, with RS facing, sl first 42(42-43-43-45-47) sts of one section to straight needle. Sl second 42(42-43-43-45-47) sts of the other section to another straight needle. Hold pieces together with WS facing each other and with needles pointing in the same direction. Join yarn and * insert needle through first st on front needle and first st



on back needle. Knit these 2 sts tog. Rep from * once more, then bind off first st. Continue in this manner, working 3-needle bind-off until all sts have been bound off. Repeat with the remaining sts on holders.

BACK

With RS facing, pick up and k90(100-110-120-130-140) sts along side of yoke between markers. Purl 1 row.

Establish Charts A and B: Row 1 (RS): K14(19-24-29-34-39), place marker, work Row 1 of Chart A over 12 sts, place marker, work Row 1 of Chart B over 38 sts, place marker, work Row 1 of Chart A over 12 sts, place marker, k14(19-24-29-34-39).

Row 2: P to first marker, work Row 2 of Chart A to

next marker, work Row 2 of Chart B to next marker, work Row 2 of Chart A to next marker, p to end. Work even in pat as established until 26 rows of Chart B have been completed twice (52 rows total), end on WS. Continuing to work Chart A, discontinue Chart B and work these 38 sts in St st. Work even until piece measures 14(14-14½-14½-15-15)" from picked-up sts, end on RS. Bind off knitwise on WS.

FRONT

With RS facing, pick up and k90(100-110-120-130-140) sts along the other side edge of yoke between markers. Complete same as back.

FINISHING

Sew side and sleeve seams.

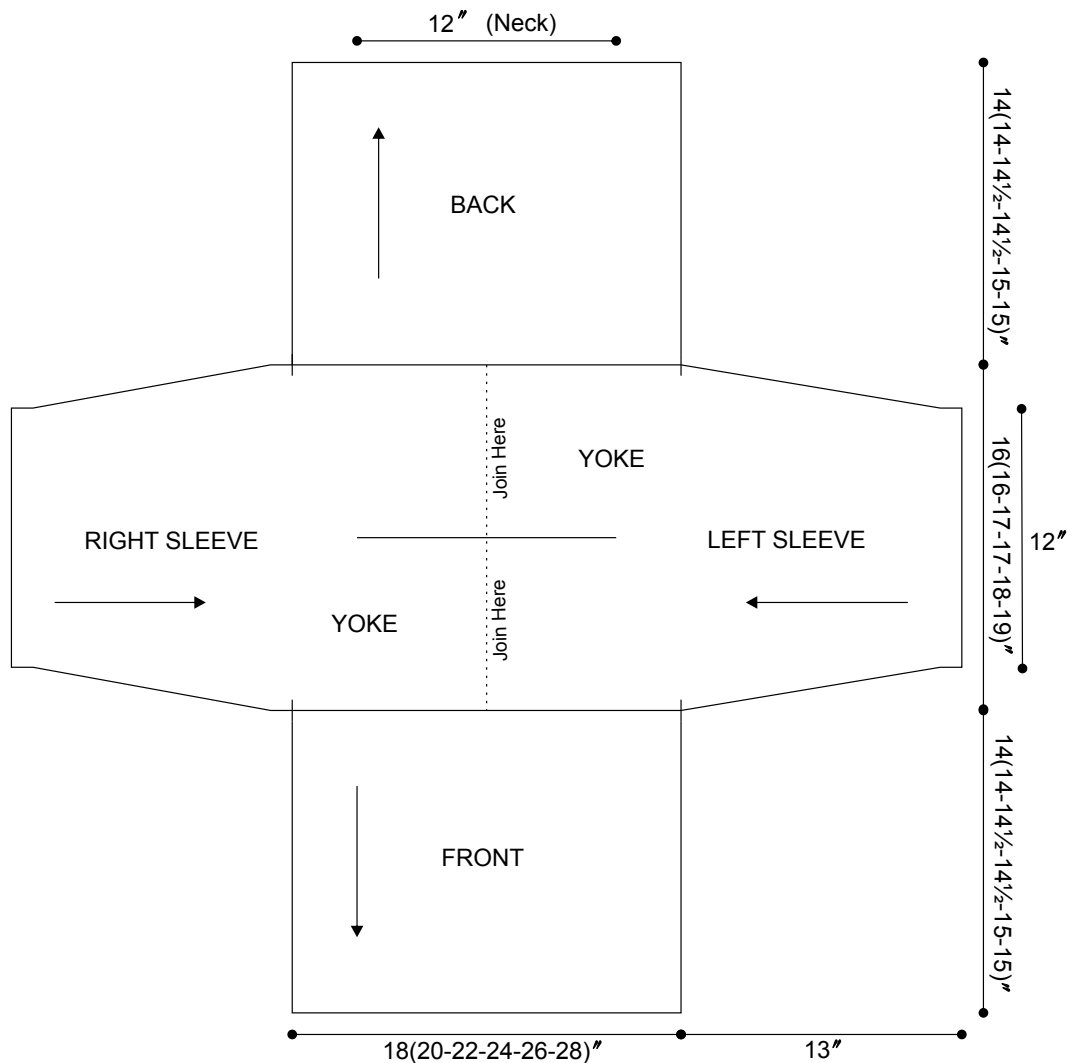


CHART A

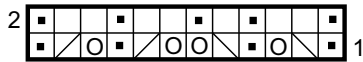


CHART B

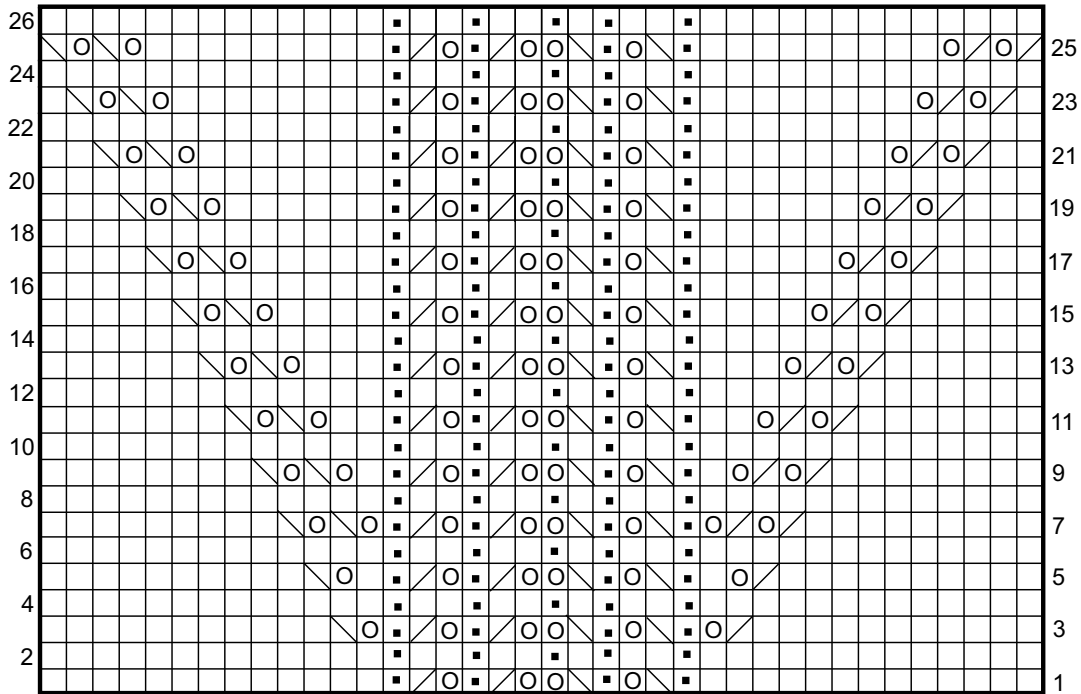
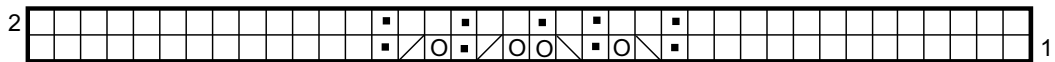


CHART C



KEY TO CHARTS

- K on RS, p on WS
- P on RS, k on WS
- Yo
- SSK
- K2 tog

Note: When working over double yo's on WS rows, p the first yo and k the second yo.

ABBREVIATIONS & TERMS

Knit

beg: beginning
CC: contrasting color
cn: cable needle
cont: continue
dec: decrease
dpn: double pointed needles
est: established
inc: increase
K: knit
KSP: Knit 1, then slip stitch back to left hand needle, lift 2nd stitch on left hand needle back over returned stitch and replace returned stitch on RH needle (1 stitch decreased).
K2SP: Knit 2 together, then slip stitch back to left hand needle, lift second stitch on left hand needle back over returned stitch and replace returned stitch on right hand needle (2 stitches decreased).
LH: left hand
lp(s): loop(s)
LT2 (Left Twist): Skip 1 stitch, knit second stitch through back loop, then knit both stitches together through back loop
MC: main color
M1k: Pick up horizontal strand between stitch just worked and next stitch, place on left hand needle, knit this stitch (1 stitch increased).
M1p: Pick up horizontal strand between stitch just worked and next stitch, place on left hand needle, purl this stitch (1 stitch increased).
p: purl
pat(s): pattern(s)
pm: place marker
pssso: pass slip stitch over knit stitch
p2sso: pass 2 slip stitches over knit stitch
rem: remaining
rep: repeat
RH: right hand
rnd(s): round(s)
RS: right side
RT2 (Right Twist): Knit 2 stitches together, leaving them on the left hand needle, then knit the first stitch again slipping both stitches to the right hand needle.
SKP: slip 1, knit 1, pass slip stitch over
sl: slip
SSK: Slip 2 stitches knitwise, insert point of left hand needle through fronts of these 2 stitches and knit 2 together.
st(s): stitch(es)

TBL: through back loop(s)
tog: together
WS: wrong side
wyib: with yarn in back
wyif: with yarn in front
yo: yarn over
end on WS: end having just completed a Wrong Side row.
end on RS: end having just completed a Right Side row
STOCKINETTE ST (St st): Knit 1 row, purl 1 row alternately when working on straight needles. The knit side is the right side of work. Knit EVERY round when working in the round on a circular needle. Reverse **St st (Rev St st):** Purl 1 row, knit 1 row alternately when working on straight needles. The purl side is the right side of the work. Purl EVERY round when working in the round on a circular needle.
GARTER ST: Knit EVERY row when working on straight needles. Knit 1 round, purl 1 round when working on a circular needle.

Crochet

bphdc (back post half double crochet): Yarn over, insert hook from back to front to back around post of half double crochet one row below, yarn over, draw up a loop, yarn over, draw through all 3 loops on hook (this is worked on even # or wrong side rows).
bptr (back post triple): Yarn over twice, insert hook from back to front around post of stitch on previous row and pull up a loop, (yarn over and draw through 2 loops on hook) 3 times.
ch: chain
dc: double crochet
fphdc (front post half double crochet): Yarn over, insert hook from front to back to front around post of half double crochet one row below, yarn over, draw up a loop, yarn over, draw through all 3 loops on hook (this is worked on odd # or right side rows)
fptr (front post triple): Yarn over twice, insert hook from front to back around post of stitch on previous row and pull up a loop, (yarn over and draw through 2 loops on hook) 3 times.
hdc: half double crochet
hdctbl: Half double crochet worked in the back loop
hdctfl: Half double crochet worked in the front loop
sl st: slip stitch
sp: space
tr: treble