

Love Berroco patterns? Sign up for our **KnitBits®** newsletter.

Free Pattern

skill level: Intermediate
One size

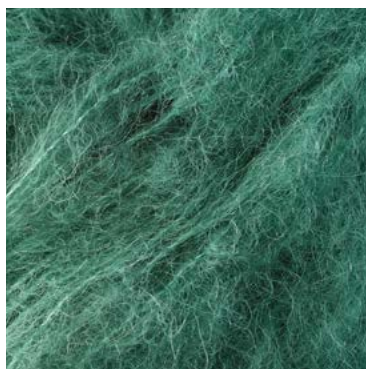
finished measurements
Approximately 10" wide x 60" long

materials
3 Balls **BERROCO ANDEAN MIST** (25 grs), #6320 Lascar
Straight knitting needles, size 7 (4.50 mm) OR SIZE TO OBTAIN GAUGE
Spare knitting needle, size 7 (4.50 mm)

gauge
20 sts and 24 rows = 4" in St st
TO SAVE TIME, TAKE TIME TO CHECK GAUGE



Berroco Andean Mist™



*Find this yarn
at your LYS*

Our supercharged store locator goes above and beyond the ordinary. Innovatively linked to our inventory system, search for a yarn in your area and you'll pinpoint LYS's that have a proven history of ordering that product. A handy listing of all of the Berroco yarns the store carries and easy access to driving directions are also right at your finger tips. *Find all yarns now.*

 **BERROCO®**
www.berroco.com

Don't forget to connect with us on social media!



NOTE: We recommend using yarns called for in our instructions. Every effort has been made to ensure that directions contained in this book are accurate and complete, however errors do occur. We cannot be responsible for variance of individual knitters, human or typographical errors.

All pattern PDFs are updated when corrections are made. In the event of finding an error, please make sure you've downloaded the most recent version.

NOTE

This scarf is made in 2 pieces, then joined in the center using 3-needle bind off.

SCARF

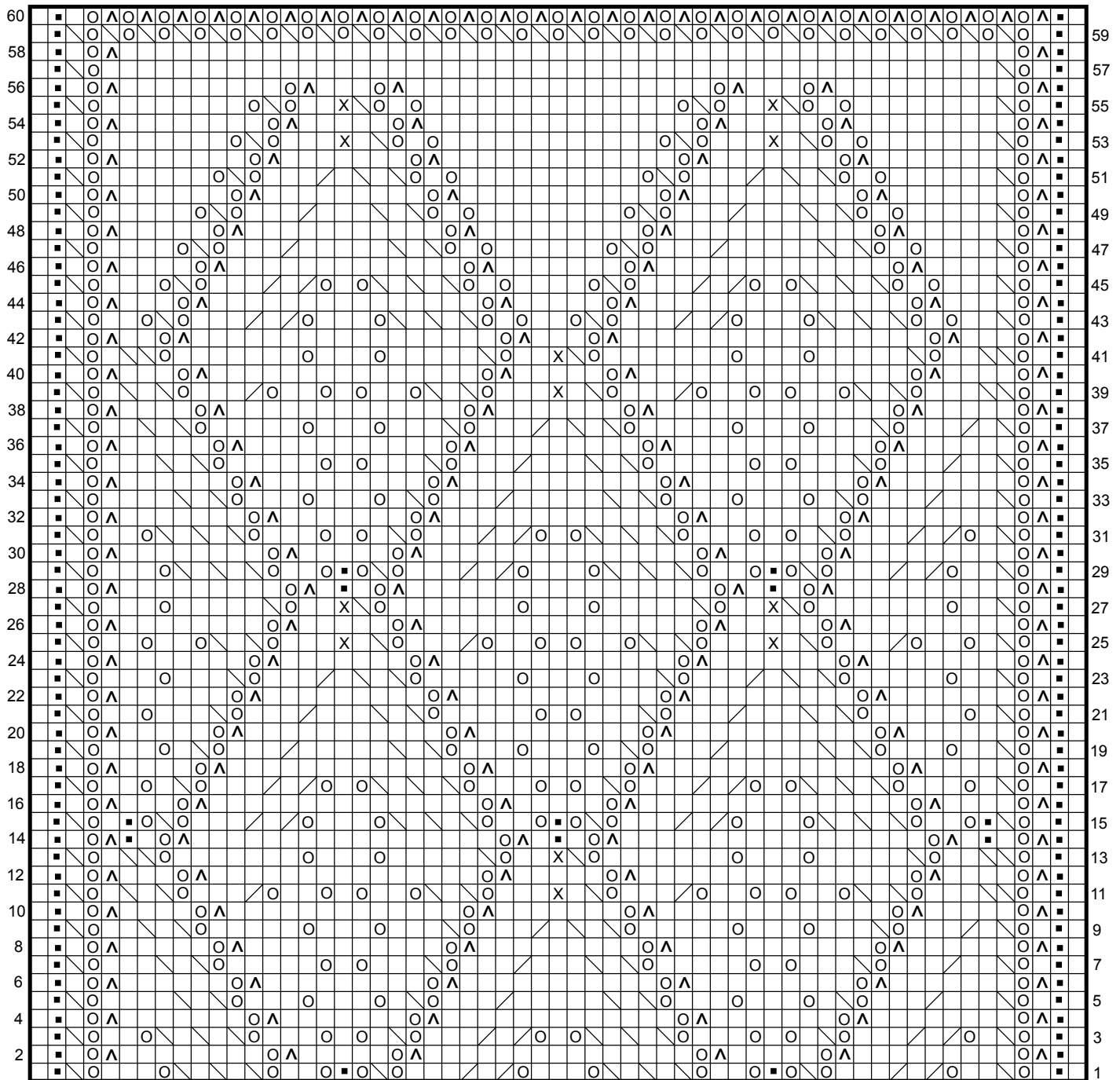
Section 1: With straight needles, cast on 59 sts. Work Rows 1 – 56 of chart, then rep Rows 57 and 58 until piece measures 28" from beg, end on WS. Rep Rows 59 and 60 three times (6 rows total), end on WS. Break off yarn and leave sts on needle.

Section 2: Using straight needle and spare needle, work same as Section 1, end on WS. DO NOT break off yarn.

FINISHING

Hold 2 sections together with WS facing each other and needles one behind the other, pointed in the same direction. * Insert point of RH needle through first st on front needle and first st on back needle and k these 2 sts tog. Rep from * once more, then bind off 1 st. Continue in this manner until all sts have been bound off.





HOW TO USE CHART

Work from right to left on RS rows
 Work from left to right on WS rows

KEY TO CHART

- K on RS, p on WS
- Yo
- P on RS, k on WS
- △ P2 tog
- ▧ SSK
- ⊗ SI 1, k2 tog, pss0
- ▨ K2 tog

ABBREVIATIONS & TERMS

Knit

beg: beginning
CC: contrasting color
cn: cable needle
cont: continue
dec: decrease
dpn: double pointed needles
est: established
inc: increase
K: knit
KSP: Knit 1, then slip stitch back to left hand needle, lift 2nd stitch on left hand needle back over returned stitch and replace returned stitch on RH needle (1 stitch decreased).
K2SP: Knit 2 together, then slip stitch back to left hand needle, lift second stitch on left hand needle back over returned stitch and replace returned stitch on right hand needle (2 stitches decreased).
LH: left hand
lp(s): loop(s)
LT2 (Left Twist): Skip 1 stitch, knit second stitch through back loop, then knit both stitches together through back loop
MC: main color
M1k: Pick up horizontal strand between stitch just worked and next stitch, place on left hand needle, knit this stitch (1 stitch increased).
M1p: Pick up horizontal strand between stitch just worked and next stitch, place on left hand needle, purl this stitch (1 stitch increased).
p: purl
pat(s): pattern(s)
pm: place marker
pssso: pass slip stitch over knit stitch
p2sso: pass 2 slip stitches over knit stitch
rem: remaining
rep: repeat
RH: right hand
rnd(s): round(s)
RS: right side
RT2 (Right Twist): Knit 2 stitches together, leaving them on the left hand needle, then knit the first stitch again slipping both stitches to the right hand needle.
SKP: slip 1, knit 1, pass slip stitch over
sl: slip
SSK: Slip 2 stitches knitwise, insert point of left hand needle through fronts of these 2 stitches and knit 2 together.
st(s): stitch(es)

TBL: through back loop(s)
tog: together
WS: wrong side
wyib: with yarn in back
wyif: with yarn in front
yo: yarn over
end on WS: end having just completed a Wrong Side row.
end on RS: end having just completed a Right Side row
STOCKINETTE ST (St st): Knit 1 row, purl 1 row alternately when working on straight needles. The knit side is the right side of work. Knit EVERY round when working in the round on a circular needle. Reverse **St st (Rev St st):** Purl 1 row, knit 1 row alternately when working on straight needles. The purl side is the right side of the work. Purl EVERY round when working in the round on a circular needle.
GARTER ST: Knit EVERY row when working on straight needles. Knit 1 round, purl 1 round when working on a circular needle.

Crochet

bphdc (back post half double crochet): Yarn over, insert hook from back to front to back around post of half double crochet one row below, yarn over, draw up a loop, yarn over, draw through all 3 loops on hook (this is worked on even # or wrong side rows).
bptr (back post triple): Yarn over twice, insert hook from back to front around post of stitch on previous row and pull up a loop, (yarn over and draw through 2 loops on hook) 3 times.
ch: chain
dc: double crochet
fphdc (front post half double crochet): Yarn over, insert hook from front to back to front around post of half double crochet one row below, yarn over, draw up a loop, yarn over, draw through all 3 loops on hook (this is worked on odd # or right side rows)
fptr (front post triple): Yarn over twice, insert hook from front to back around post of stitch on previous row and pull up a loop, (yarn over and draw through 2 loops on hook) 3 times.
hdc: half double crochet
hdctbl: Half double crochet worked in the back loop
hdctfl: Half double crochet worked in the front loop
sl st: slip stitch
sp: space
tr: treble