

# Theodora

Designed by Brenda York



**skill level:** Intermediate  
One size

**finished measurements**  
Approximately 58" across top x 30"  
long (after blocking)

**materials**  
**BERROCO ARTISAN** (50 grs): 4 hanks  
#6039 Maritime (MC), 2 hanks  
#6042 Strait of Gibraltar (CC1), 1  
hank #6029 Caspian Sea (CC2), 2  
hanks #6040 Ocean Floor (CC3) and  
1 hank #6025 Caribbean Sea (CC4)

Crochet hook, size 4.50 mm (G) OR  
SIZE TO OBTAIN GAUGE

**gauge**  
1 Motif = 5" x 5" (after blocking)  
TO SAVE TIME, TAKE TIME TO CHECK  
GAUGE

*Berroco Artisan*<sup>®</sup>

Find this Yarn 

 **BERROCO**<sup>®</sup>  
www.berroco.com



Love Berroco patterns?  
Sign up for our **KnitBits**<sup>®</sup> newsletter.



**NOTE:** We recommend using yarns called for in our instructions. Every effort has been made to ensure that directions contained in this book are accurate and complete, however errors do occur. We cannot be responsible for variance of individual knitters, human or typographical errors.

All pattern PDFs are updated when corrections are made. In the event of finding an error, please make sure you've downloaded the most recent version.

## NOTE

This shawl is made up of square motifs joined together on the 8th rnd. Triangular motifs are then joined on the last row to fill in the gaps. We suggest weaving in ends as you work. When changing colors and the last st of the row is a sl st, work the sl st with the new color. When any other kind of st, work last st of the row until there are 2 loops on hook, then draw new color through these 2 loops.

## STITCH GLOSSARY

**Puff St:** Yo, pull up a loop in next st, (yo, pull up a loop in same st) twice, yo and pull through all loops on hook.

## SHAWL

### MOTIF 1

Using CC1, beg with a sliding loop.

**Rnd 1:** Ch 1, work 16 sc in loop, join with a sl st in beg ch-1 – 16 sc. Pull loop up tightly to close center hole.

**Rnd 2:** Ch 3 (counts as 1 dc), \* Puff St in next sc, dc in next sc, [Puff St, ch 3, Puff St] in next sc (corner), dc in next sc, rep from \* twice more, Puff st in next sc, dc in next sc, [Puff St, ch 3, Puff St] in next sc (corner), join with a sl st in last ch of beg ch-3, changing to CC2 as in note.

**Rnd 3:** With CC2, ch 1, sc in same st, \* ch 5, skip next Puff St, sc in next dc, ch 5, skip next Puff St, [sc, ch 5, sc] in next ch-3 corner sp, ch 5, skip next Puff St, sc in next dc, rep from \* 3 times more, omitting last sc in next dc, end ch 2, dc in last dc, changing to CC3 as in note.

**Rnd 4:** With CC3, ch 1, sc in space made by joining dc, \* [ch 3, sc in next ch-5 sp] twice, ch 3, [sc, ch 1, sc] in next corner ch-5 sp, ch 3, sc in next ch-5 sp, rep from \* 3 times more, omitting last sc, join with a sl st in first sc.

**Rnd 5:** With CC3, ch 1, \* [4 sc in next ch-3 sp, skip next sc] 3 times, [sc, ch 3, sc] in next ch-1 corner sp,



skip next sc, 4 sc in next ch-3 sp, skip next sc, rep from \* 3 times more, join with a sl st in beg ch-1, changing to CC4 as in note.

**Rnd 6:** With CC4, ch 1, sc in same st, \* [ch 4, skip next 4 sc, sc between last skipped sc and next sc] twice, ch 4, [sc, ch 3, sc] in next ch-3 corner sp, ch 4, skip next 4 sc, sc between last skipped sc and next sc, rep from \* twice, more, [ch 4, skip next 4 sc, sc between last skipped sc and next sc] twice, ch 4, [sc, ch 3, sc] in next ch-3 corner sp, ch 4, join with a sl st in first sc, changing to MC as in note.

**Rnd 7:** With MC, ch 1, sc in same st, \* [ch 4, sc in next sc] twice, ch 4, [sc, ch 3, sc] in next ch-1 corner sp, ch 4, sc in next sc, rep from \* 3 times more, omitting last sc, join with a sl st in first sc.

**Rnd 8:** With MC, ch 1, [sc, ch 3, sc] in same st, \* [3 sc in next ch-4 sp, (sc, ch 3, sc) in next sc] twice, 3 sc in

next ch-4 sp, [sc, ch 3, sc] in next ch-3 corner sp, 3 sc in next ch-4 sp, [sc, ch 3, sc] in next sc, rep from \* 3 times more, omitting last [sc, ch 3, sc], join with a sl st in beg ch-1. Fasten off.

The corner of this motif is the center point of your triangle.

## MOTIF 2

Work Rnds 1 – 7 as for Motif 1.

**Rnd 8 (Joining Rnd):** With MC, ch 1, [sc, ch 3, sc] in same st, [3 sc in next ch-4 sp, (sc, ch 3, sc) in next sc] twice, 3 sc in next ch-4 sp, sc in next ch-3 corner sp, ch 1, insert hook from RS through ch-3 corner sp of Motif 1 and work sl st, ch 1, sc in ch-3 corner sp of Motif 2, \* 3 sc in next ch-4 sp, sc in next ch-3 sp, ch 1, insert hook from RS through next ch-3 sp of Motif 1 and work sl st, ch 1, sc in same ch-3 sp of Motif 2, rep from \* twice more, 3 sc in next ch-4 sp, sc in next ch-3 corner sp, ch 1, insert hook from RS through ch-3 corner sp of Motif 1 and work sl st, ch 1, sc in ch-3 corner sp of Motif 2, complete as for Rnd 8 of Motif 1. Fasten off.

Continue to make motifs, joining as you work, using diagram as a guide, working 1 more motif on each row until you have 7 motifs joined across last row.

**Note:** Join third side of motif as for second side when working a motif that needs to be joined on two sides.

Make 8 Triangle Motifs (see below), joining in the gaps of the last row of Motif 2's. This will form a straight edge at the top of your shawl.

## TRIANGLE MOTIF 1

**Note:** Entire motif is worked with MC. There will be 1 row less than on square motifs.

Using MC, beg with a sliding loop.

**Row 1 (RS):** Ch 1, work 9 sc in loop. Do not join. Turn.

**Row 2 (WS):** Ch 5 (counts as dc + ch 2), Puff St in first sc, dc in next sc, Puff St in next sc, dc in next sc, [Puff St, ch 3, Puff St] in next sc (corner), dc in next sc, Puff St in next sc, dc in next sc, [Puff St, ch 2, dc] in last sc, turn.

**Row 3:** [Sc, ch 5, sc] in ch-2 sp, [ch 5, skip next Puff St, sc in next dc] twice, ch 5, skip next Puff St, [sc, ch 5, sc] in ch-3 corner sp, [ch 5, skip next Puff St, sc in next dc] twice, ch 5, skip last Puff St, [sc, ch 5, sc] in last ch-2 sp, turn.

**Row 4:** Sl st into first ch-5 sp, ch 1, [sc, ch 1, sc] in same sp, ch 3, [sc in next ch-5 sp, ch 3] 3 times, sc, [sc, ch 1, sc] in ch-5 corner sp, [ch 3, sc in next ch-5 sp] 3 times, ch 3, [sc, ch 1, sc] in last ch-5 sp, turn.

**Row 5:** [Sc, ch 3, sc] in ch-1 sp, [4 sc in next ch-3 sp] 4 times, [sc, ch 3, sc] in ch-1 corner sp, [4 sc in next ch-3 sp] 4 times, [sc, ch 3, sc] in ch-1 sp, turn.

**Row 6:** [Sc, ch 3, sc] in ch-3 sp, ch 4, [skip 4 sc, sc between last skipped sc and next sc, ch 4] 3 times, [sc, ch 3, sc – corner] in next ch-3 corner sp, ch 4, [skip 4 sc, sc between last skipped sc and next sc, ch 4] 3 times, [sc, ch 3, sc] in ch-3 sp, turn.

**Row 7 (Joining Row - RS):** Sc in ch-3 sp, ch 1, insert hook from RS through ch-3 corner sp of square Motif and work sl st, ch 1, sc in ch-3 corner sp of Triangle Motif, \* 3 sc in next ch-4 sp, sc in next sc, ch 1, insert hook from RS through next ch-3 sp of square Motif and work sl st, ch 1, sc in same sc of Triangle Motif, rep from \* twice more, 3 sc in next ch-4 sp, sc in next ch-3 corner sp, ch 1, insert hook from RS through ch-3 corner sp of square Motif and work sl st, ch 1, sc in ch-3 corner sp of Triangle Motif, \*\* 3 sc in next ch-4 sp, [sc, ch 3, sc] in next sc, rep from \*\* twice more, 3 sc in next ch-4 sp, [sc, ch 3, sc] in next sc in ch-3 corner sp, fasten off.

**Note:** When joining 2 sides, work sc in next ch-3 corner sp, ch 1, insert hook from RS through ch-3 corner sp of square motif and work sl st, ch 1, sc in ch-3 corner sp of triangle motif in place of all [sc, ch 3, sc] on second side as for first side of triangle. On last triangle you will join only the second side.

## EDGING

**Note:** Edging is worked along both slanted side edges of shawl, not across top.

**Row 1 (RS):** With RS facing, join CC1 with a sl st in ch-3 sp at outer edge of last Triangle Motif. Sc in same sp, [ch 2, skip 2 sc, hdc in next sc, ch 2, skip 2 sc, sc in ch-3 sp] 3 times, ch 2, skip 3 sc, hdc in next sc, ch 2, skip 2 sc, \* hdc in joining of 2 motifs, ch 2, skip 2 sc, hdc in next sc, [ch 2, skip 2 sc, sc in ch-3 sp, ch 2, skip 2 sc, hdc in next sc] 3 times, ch 2, skip 2 sc, rep from \* 6 times more, [sc, ch 3, sc] in ch-3 corner sp, \*\* ch 2, skip 2 sc, hdc in next sc, [ch 2, skip 2 sc, sc in ch-3 sp, ch 2, skip 2 sc, hdc in next sc] 3 times, ch 2, skip 2 sc, hdc in joining of 2 motifs, rep from \*\* 6 times more, ch 2, skip 2 sc, hdc in next sc, [ch 2, skip

2 sc, sc in ch-3 sp, ch 2, skip 2 sc, hdc in next sc] 3 times, ch 2, skip 2 sc, hdc in ch-3 sp, turn.

**Row 2 (WS):** With CC, ch 1, work 1 sc in each sc and hdc and 2 sc in each ch-2 sp along each side of shawl (work sc, ch 3, sc in ch-3 corner sp), change to CC2 at end of row. Turn.

**Row 3 (RS):** With CC2, ch 1, work 1 sc in each sc along both edges of shawl (work sc, ch 3, sc in ch-3 corner sp), fasten off. Do not turn, return to beg of row just worked.

**Row 4 (RS):** Join MC with a sl st in first st. Ch 1, sc in same st, ch 5, \* skip 2 sc, sc in next sc, ch 5, rep from \* along edge of shawl to 2 sts before corner ch-3 sp, skip 2 sc, [sc, ch 3, sc] in corner ch-3 sp, ch 5, \*\* skip 2 sc, sc in next sc, ch 5, rep from \*\* along edge of

shawl to last 3 sc, skip 2 sc, sc in last sc, turn.

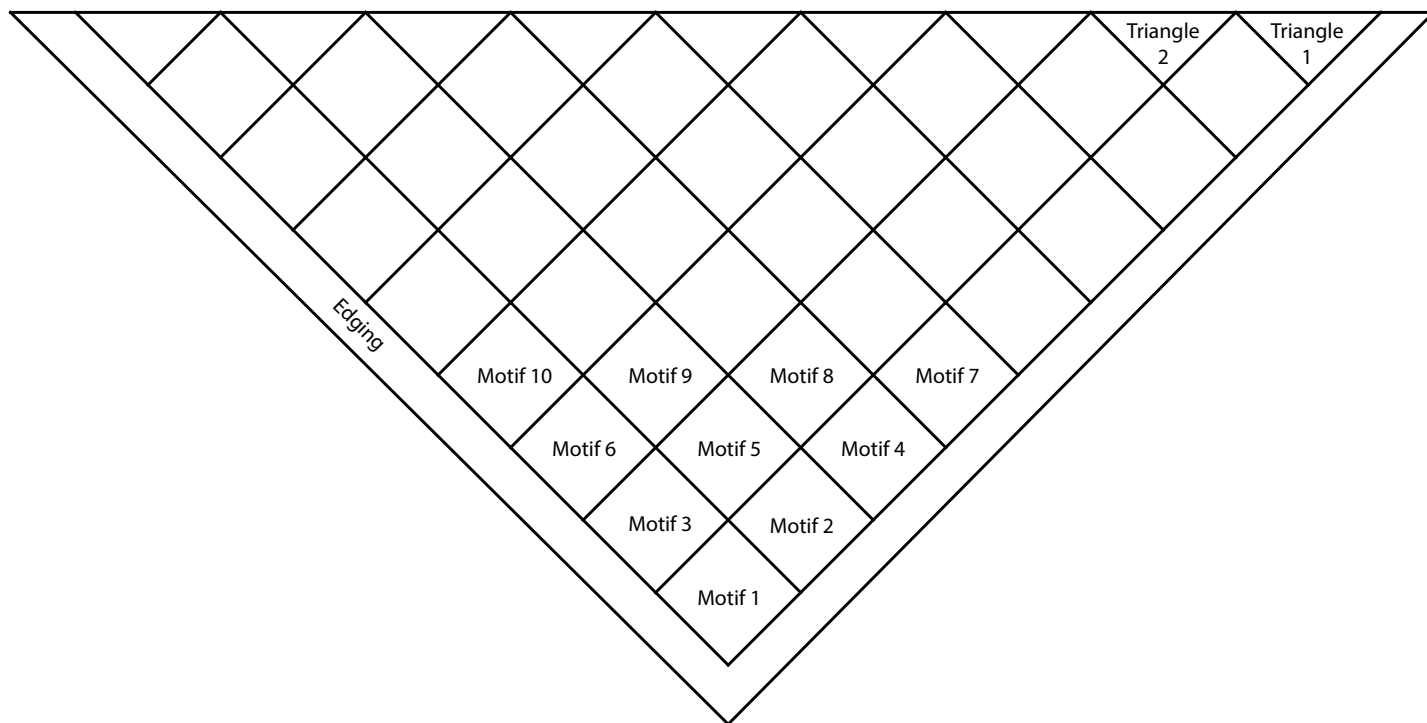
**Row 5 (WS):** Ch 5 (counts as 1 dc + ch 2), \* sc in next ch-5 sp, ch 5, rep from \* to ch-3 corner sp, [sc, ch 3, sc – corner] in ch-3 corner sp, ch 5, \*\* sc in next ch-5 sp, ch 5, rep from \*\* to last ch-5 sp, sc in last ch-5 sp, ch 2, dc in first sc of Row 4, turn.

**Row 6 (RS):** Ch 1, sc in ch-2 sp, ch 5, \* sc in ch-5 sp, ch 5, rep from \* to ch-3 corner sp, [sc, ch 3, sc] in ch-3 corner sp, ch 5, \*\* sc in next ch-5 sp, ch 5, rep from \*\* to last ch-5 sp, sc in ch-2 sp, turn. Rep Rows 5 and 6 once more. Fasten off.

## FINISHING

Weave in all ends and block as desired.

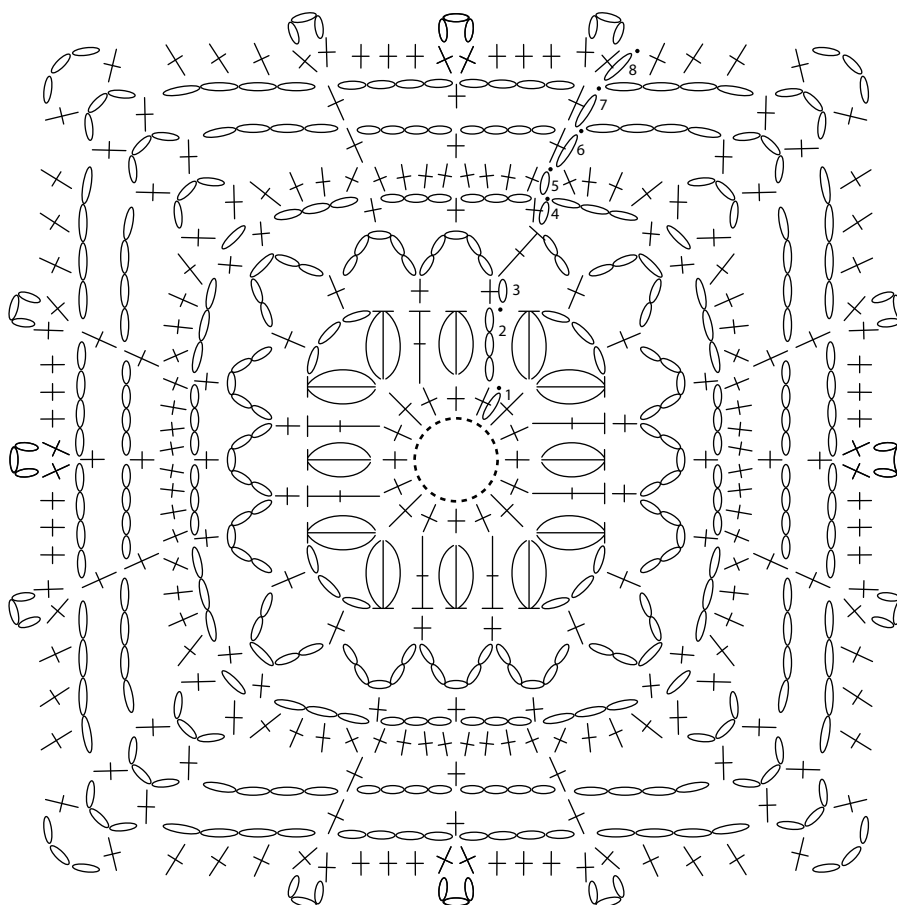
## THEODORA DIAGRAM



### MOTIF 1

#### CHART KEY

- sl st
- ch
- + sc
- ┆ dc
- ⊖ Puff St
- sliding loop

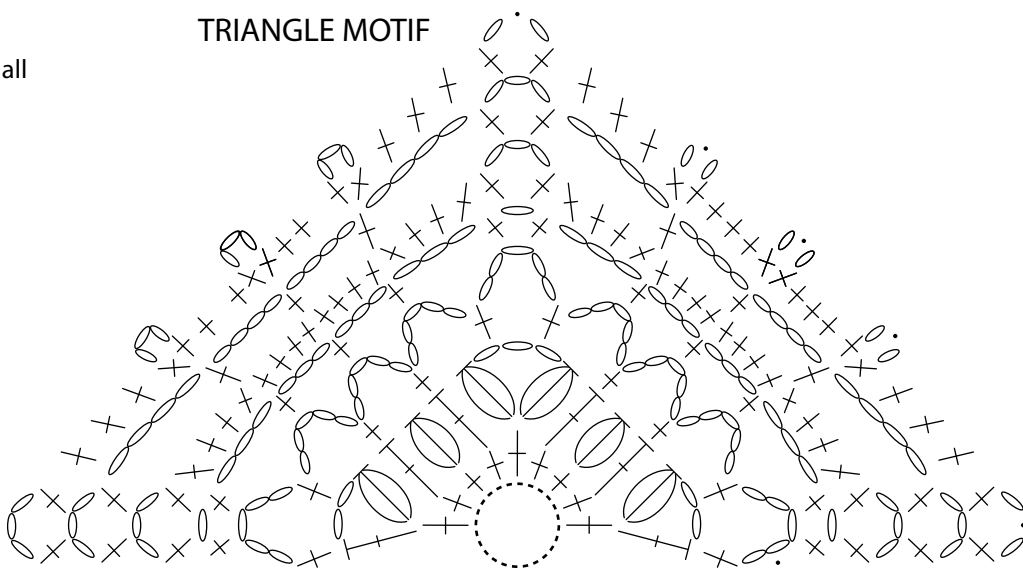


#### CHART NOTES

**Motif 1:** Work Rnds 1 & 2 with CC1, Rnd 3 with CC2, Rnds 4 & 5 with CC3, Rnd 6 with CC4, and Rnds 7 & 8 with MC.

**Triangle Motif:** Work all rnds with MC.

### TRIANGLE MOTIF



---

## ABBREVIATIONS & TERMS

---

**beg:** beginning

**CC:** contrasting color

**cont:** continue

**ch:** chain

**dec:** decrease

**dc:** double crochet

**dtr:** double treble crochet

**est:** established

**hdc:** half double crochet

**inc:** increase

**MC:** main color

**pat(s):** pattern(s)

**pm:** place marker

**rep:** repeat

**rnd(s):** round(s)

**RS:** right side

**sc:** single crochet

**sl st:** slip stitch

**sliding loop:** Form a loop of yarn around your fingers, with the end attached to the ball on the right and the tail on the left. Insert hook into the loop under both pieces of yarn and draw up a loop onto hook. (This does not count as your first stitch.) Work first row into the original loop. Pull up the yarn tail after your first row is complete to close the loop.

**sp:** space

**st(s):** stitch(es)

**tog:** together

**tr:** treble

**WS:** wrong side

**yo:** yarn over