

# sangria

Designed by Alison Green

Berroco - Sangria



**skill level:** Intermediate

Shown in size 40"

**finished measurements**

Bust – 32(36-40-44-48-52-56-60)"

Length – 23½(23¾-24-24½-24½-25-25¾-26¼-26¾)"

**materials**

9(10-11-13-14-15-17) balls

**BERROCO ARTISAN** (50 grs), #6039

Maritime

Straight knitting needles, size 8

(5.00 mm) OR SIZE TO OBTAIN

GAUGE

Crochet hook, size 4.50 mm (7)

2 st markers

**gauge**

18 sts and 26 rows = 4" in St st and

Pat St

TO SAVE TIME, TAKE TIME TO CHECK

GAUGE

*Berroco Artisan™*

Find this Yarn 

 **BERROCO®**  
www.berroco.com

Love Berroco patterns?  
Sign up for our **KnitBits®** newsletter.



**NOTE:** We recommend using yarns called for in our instructions. Every effort has been made to ensure that directions contained in this book are accurate and complete, however errors do occur. We cannot be responsible for variance of individual knitters, human or typographical errors.

All pattern PDFs are updated when corrections are made. In the event of finding an error, please make sure you've downloaded the most recent version.

## STITCH GLOSSARY

### 3/3 Cluster Stitch

Sl 5 sts, dropping extra wraps, then sl sts back to LH needle. Knt these 5 sts tog, yo, then knit same 5 sts together again.

### Pattern Stitch (multiple of 12 sts plus 7)

**Row 1 (WS):** [K1, p5] to last st, k1.

**Row 2:** [P1, k5] to last st, p1.

**Row 3:** K1, p5, k1, \* purl next 5 sts, wrapping each st twice, k1, p5, k1, rep from \*.

**Row 4:** P1, k5, p1, \* yo, work 3/3 Cluster St, yo, p1, k5, p1, rep from \*.

**Row 5:** Same as Row 1.

**Row 6:** Same as Row 2.

**Row 7:** K1, purl next 5 sts, wrapping each st twice, k1, \* p5, k1, purl next 5 sts, wrapping each st twice, k1, rep from \*.

**Row 8:** P1, yo, work 3/3 Cluster St, yo, p1, \* k5, p1, yo, work 3/3 Cluster St, yo, p1, rep from \*.

Rep Rows 1-8 for Pat St.

## BACK

Cast on 73(81-91-99-109-117-127-135) sts.

**Row 1 (WS):** P15(19-18-22-21-25-30-28), pm, work Row 1 of Pat St over 43(43-55-55-67-67-79) sts, pm, p15(19-18-22-21-25-30-28).

**Row 2:** Knit to first marker, sm, work next row of Pat St over 43(43-55-55-67-67-79) sts, sm, knit to end. Work in pat as established until piece measures 4" from beg, end on WS.

**Dec Row (RS):** K2, k2tog, work as est to last 4 sts, SSK, k2 - 2 sts dec'd. Rep Dec Row every 12th row 3 times more - 65(73-83-91-101-109-119-127) sts. Work 11 rows even.

**Inc Row (RS):** K2, M1L, work as est to last 2 sts, M1R, k2 - 2 sts inc'd. Rep Inc Row every 6th row 3 times more - 73(81-91-99-109-117-127-135) sts. Work even until piece measures 15½" from beg, end on WS.



**Shape Armholes:** Bind off 4(5-6-7-8-8-9-9) sts at beg of next 2 rows - 65(71-79-85-93-101-109-117) sts.

**Dec Row (RS):** K1, k2tog, work to last 3 sts, SSK, k1 - 2 sts dec'd. Rep Dec Row every RS row 2(3-5-5-5-7-9-11-4-6-8-10-12) times more - 59(63-67-73-77-81-85-91) sts. Work even until armholes measure 7 (7¼-7½-8-8½-9¼-9¾-10¼)", end on WS. Mark center 43 sts on last row.

**Shape Shoulders and Neck: Next Row (RS):** Bind off 4(5-6-8-9-10-11-12) sts, work to first marker, join another ball of yarn and bind off center 43 sts, work to end. Working both sides at once, bind off 4(5-6-7-8-9--10-12) sts at beg of the next row, then 4(5-6-8-9-10-11-12) sts at beg of the next 2 rows.

## FRONT

Work as for Back until armholes measure 6", end on WS. Mark center 31 sts on last row.

**Shape Neck: Next Row (RS):** Work to first marker, join another ball of yarn and bind off center 31 sts, work to end. Working both sides at once, work WS row, then bind off 3 sts twice at each neck edge. 8(10-12-16-18-20-22-24) sts rem for each shoulder. Work even until armholes measure 7½", end on WS. Shape shoulders as for Back.



## SLEEVES

Cast on 41(41-41-41-45-45-45) sts.

**Row 1 (WS):** P11(11-11-11-13-13-13), pm, work Row 1 of Pat St over 19 sts, pm, p11(11-11-11-13-13-13).

**Row 2:** Knit to first marker, sm, work next row of Pat St over 19 sts, sm, k to end. Work in pat as established until piece measures 1" from beg, end on WS.

**Inc Row:** K2, M1R, work to last 2 sts, M1L, k2 – 2 sts inc'd. Rep Inc Row every  $3\frac{1}{2}$  5(2-1 $\frac{1}{4}$ -1-1 $\frac{3}{4}$ -3 $\frac{3}{4}$ -3 $\frac{3}{4}$ )" 4(7-9-11-13-16-17-19) times more – 51(57-61-65-73-79-81-85) sts. Work even until sleeve measures 17", end on WS.

**Shape Cap:** Bind off 4(5-6-7-8-8-9-9) sts at beg of next 2 rows – 43(47-49-51-57-63-63-67) sts. Work 2 rows even.

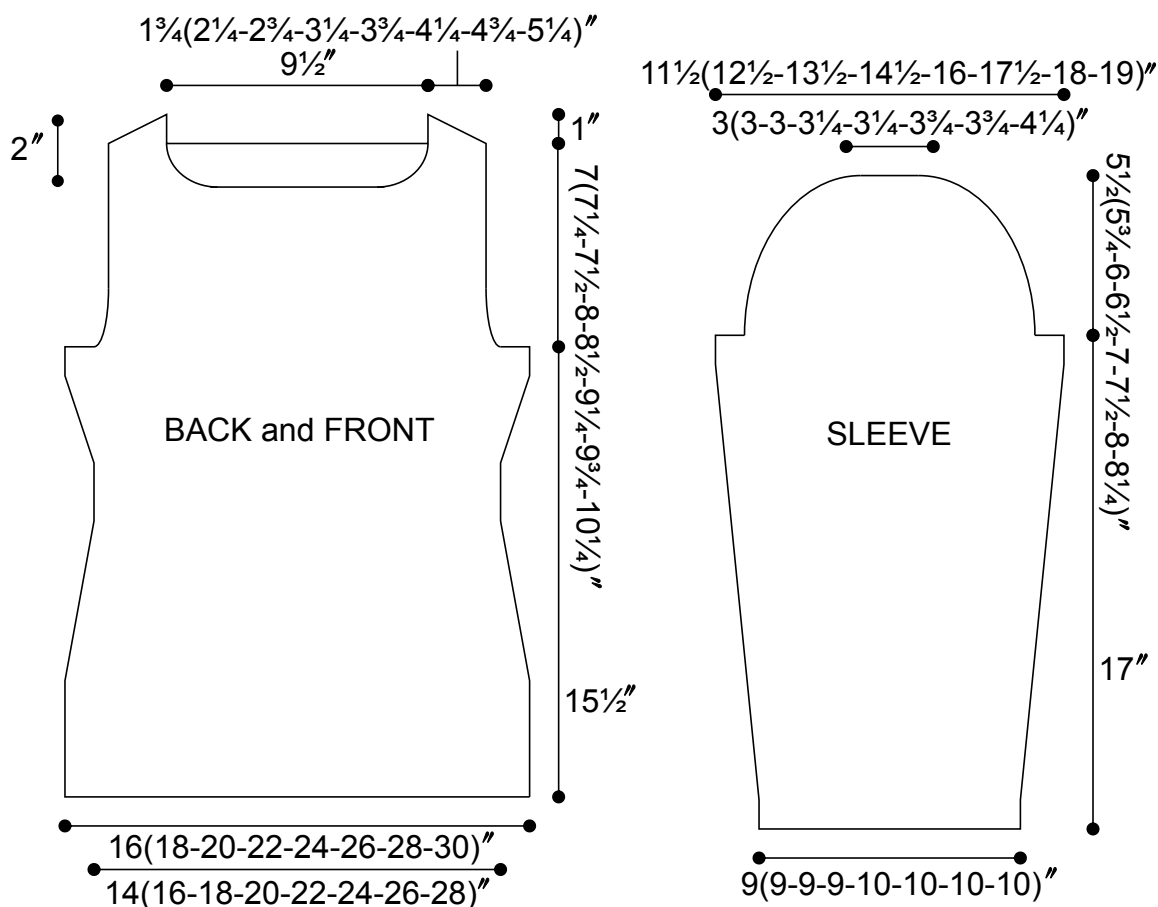
**Dec Row (RS):** K1, k2tog, work to last 3 sts, SSK, k1 – 2 sts dec'd. Rep Dec Row every 4 rows 3(2-2-3-2-1-3-3) times more, then every RS row 7(10-11-10-14-17-15-16) times, end on WS – 21(21-21-23-23-25-25-27) sts. Bind off 2 sts at beg of the next 4 rows. Bind off remaining 13(13-13-15-15-17-17-19) sts.

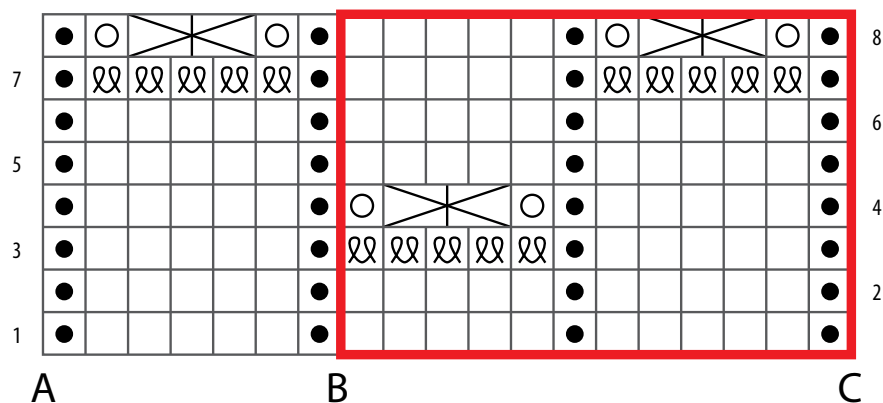
## FINISHING







Sew shoulder seams. Sew in sleeves. Sew side and sleeve seams.

**Neckline finishing:** With crochet hook, work 1 rnd sc around neck, then 1 rnd of Reverse Single Crochet (Crab St).

**Hem finishing:** On hem of body and sleeves, work as for Neckline finishing. Weave in ends.





-  knit on RS; purl on WS
-  purl on RS; knit on WS
-  yarn over
-  purl, wrapping stitch twice
-  3/3 Cluster Stitch (see Stitch Glossary)
-  pattern repeat

#### CHART NOTES

Row 1 is a WS row.

On WS rows, beg at A, work to C,  
then rep from B to C.

On RS rows, beg at C, rep from C  
to B, then work from B to A.

## ABBREVIATIONS & TERMS

### Knit

**beg:** beginning  
**CC:** contrasting color  
**cdd (centered double decrease):** Slip 2 together, knit 1, pass the 2 slipped stitches over.  
**cn:** cable needle  
**cont:** continue  
**dec:** decrease  
**dpn:** double pointed needles  
**est:** established  
**inc:** increase  
**K:** knit  
**k tbl:** knit through the back loop(s)  
**k2tog:** Knit 2 stitches together  
**k3tog:** Knit 3 stitches together  
**LH:** left hand  
**MC:** main color  
**M1:** Pick up horizontal strand between stitch just worked and next stitch from front to back, place on left hand needle, knit this stitch through the back (1 stitch increased).  
**M1L:** Work as for M1.  
**M1p:** Pick up horizontal strand between stitch just worked and next stitch from front to back, place on left hand needle, purl this stitch through the back (1 stitch increased).  
**M1pL:** Work as for M1p.  
**M1pR:** Pick up horizontal strand between stitch just worked and next stitch from back to front, place on left hand needle, purl this stitch through the front (1 stitch increased).  
**M1R:** Pick up horizontal strand between stitch just worked and next stitch from back to front, place on left hand needle, knit this stitch through the front (1 stitch increased).  
**p:** purl  
**p tbl:** purl through the back loop(s)  
**pat(s):** pattern(s)  
**pm:** place marker  
**pssso:** pass slip stitch over knit stitch  
**p2tog:** purl 2 stitches together  
**p2sso:** pass 2 slip stitches over knit stitch  
**p3tog:** purl 3 stitches together  
**rem:** remaining  
**rep:** repeat  
**RH:** right hand  
**rnd(s):** round(s)  
**RS:** right side  
**sl:** slip  
**sm:** slip marker

**SSK:** Slip 2 stitches knitwise, insert point of left hand needle through fronts of these 2 stitches and knit 2 together.

**SSP:** Slip 2 stitches knitwise, transfer these 2 stitches back to left hand needle, purl 2 together through the back loops.

**st(s):** stitch(es)

**TBL:** through back loop(s)

**tog:** together

**WS:** wrong side

**wyib:** with yarn in back

**wyif:** with yarn in front

**yo:** yarn over

**end on WS:** end having just completed a Wrong Side row.

**end on RS:** end having just completed a Right Side row

**STOCKINETTE ST (St st):** Knit 1 row, purl 1 row alternately when working on straight needles. The knit side is the right side of work. Knit EVERY round when working in the round on a circular needle.

**Reverse St st (Rev St st):** Purl 1 row, knit 1 row alternately when working on straight needles. The purl side is the right side of the work. Purl EVERY round when working in the round on a circular needle.

**GARTER ST:** Knit EVERY row when working on straight needles. Knit 1 round, purl 1 round when working on a circular needle.

### Crochet

**ch:** chain

**dc:** double crochet

**hdc:** half double crochet

**sc:** single crochet

**sl st:** slip stitch

**sp:** space

**tr:** treble