

Skill level: Intermediate

Shown in size Small

sizes

Directions are for women's size Small.
Changes for sizes Medium, Large, Extra Large and 2X are in parentheses.
To Fit Bust Size: 30(34-38-42-46)"

finished measurements

Bust – 34(38-43-48-51)"
Length – 19¾(21¾-22¾-25½-26¾)"
Note: This garment was designed with approximately 4" of ease. Please take this into consideration when selecting your size.

materials

4(5-6-7-8) Hanks **BERROCO VINTAGE DK** (100 grs), #2183 Lilacs
Crochet hooks, sizes 4.50 mm (G/7), 5.00 mm (H/8) and 5.50 mm (I/9) OR SIZE TO OBTAIN GAUGE
Tapestry needle
Spray bottle and pins for blocking
Stitch markers
Three 1" buttons

gauge

Diameter of motif= 4.5" with smallest hook, 5" with medium hook, 5.25" with largest hook.
18 sts = 4¼"; 12 rows (6 RR)= 3.75" (11 x 9.5 cm) in cluster filet stitch pattern.

Free Pattern



Vintage® DK



Find this yarn at your LYS

Our supercharged store locator goes above and beyond the ordinary. Innovatively linked to our inventory system, search for a yarn in your area and you'll pinpoint LYS's that have a proven history of ordering that product. A handy listing of all of the Berroco yarns the store carries and easy access to driving directions are also right at your finger tips. *Find all yarns now.*



Don't forget to connect with us on social media!



NOTE: We recommend using yarns called for in our instructions. Every effort has been made to ensure that directions contained in this book are accurate and complete, however errors do occur. We cannot be responsible for variance of individual knitters, human or typographical errors.

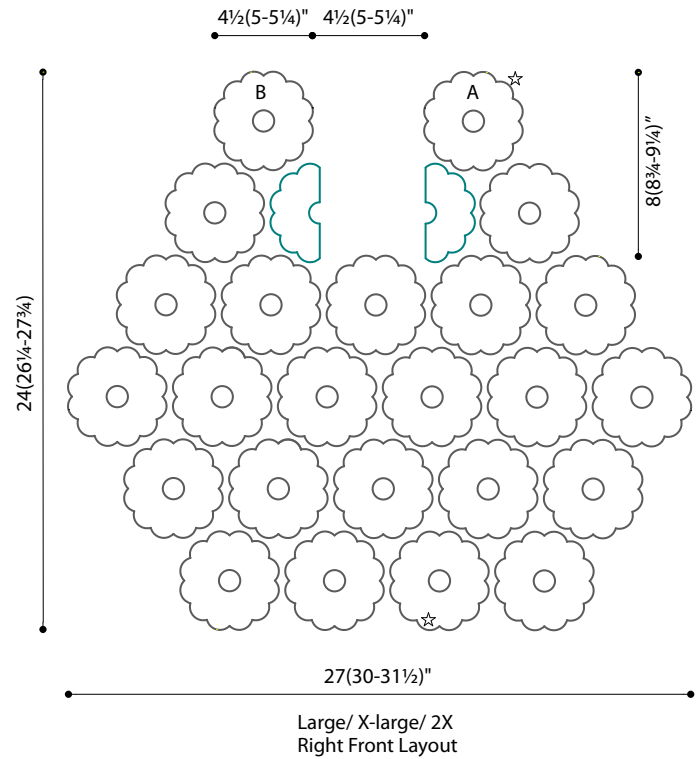
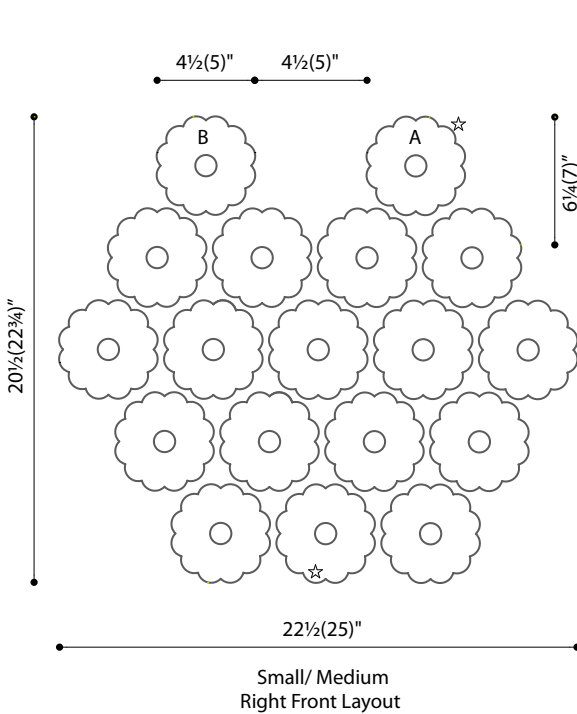
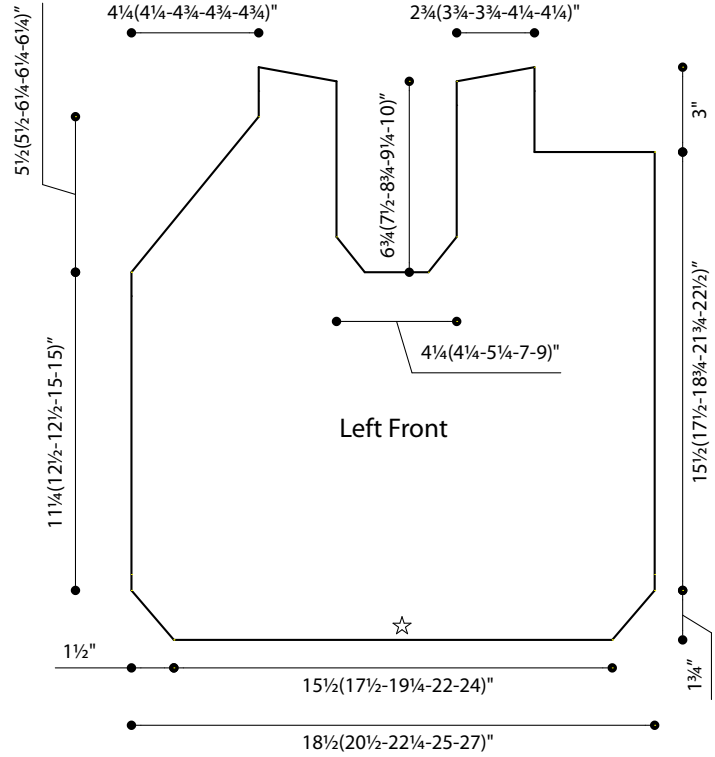
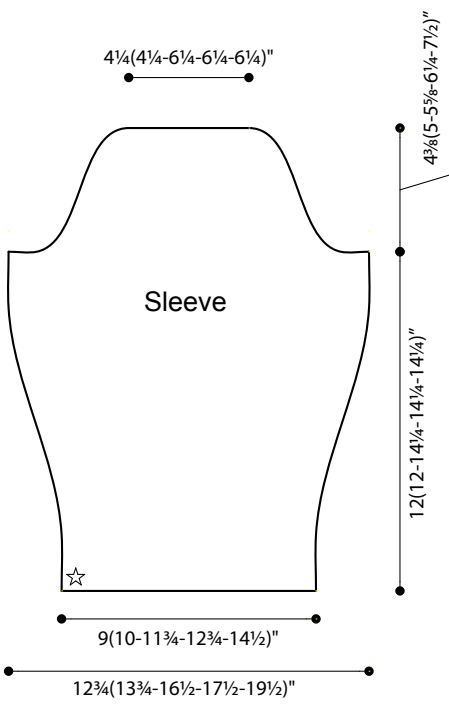
All pattern PDFs are updated when corrections are made. In the event of finding an error, please make sure you've downloaded the most recent version.

NOTES

Use smallest hook for Small and Large size, use medium hook for Medium and X-large size, and use largest hook for 2X size on the motif front panel. Use the smallest hook for the left front panel and sleeves. Right and Left front panels are overlapped and sewn together in the back, this allows a bit of room to modify the bust size for your circumference.



SCHEMATICS



STITCH GLOSSARY

SR: Stitch Repeat (Stitches to repeat for stitch pattern)

RR: Row Repeat (Rows to repeat for stitch pattern)

Prev: Previous

Tr: Treble Crochet

Dc: Double Crochet

Hdc: Half Double Crochet

Sc: Single Crochet

Ch-sp: Chain Space

Tch: Turning chain

Sps: Spaces

Sk: Skip

rep: Repeat

Ea: Each

Ch: Chain

WS: Wrong side

RS: Right side

Sl st: Slip stitch

Rnd: Round

Cont: Continue

St(s): Stitch(es)

M: Marker

Sc2tog: Single crochet 2 together

Sc3tog: Single crochet 3 together

Dc3tog: Double crochet 3 together

Dc5tog: Double crochet 5 together

2 dc-cl: (double crochet cluster)

*Yarn over hook, insert hook into next indicated stitch, yarn over hook and draw up a loop, yarn over hook and draw yarn through 2 loops; rep from * once in same stitch, yarn over hook and draw yarn through remaining loops on hook.

2 tr-cl: (treble cluster)

*Yarn over hook twice, insert hook into next indicated stitch, (yarn over hook and draw up a loop, yarn over hook and draw yarn through 2 loops) twice; rep from * once in same stitch, yarn over hook and draw yarn through remaining loops on hook.

ch 6 join: ch 2, sl st to adjoining ch-6 sp on adjacent motif, ch 3

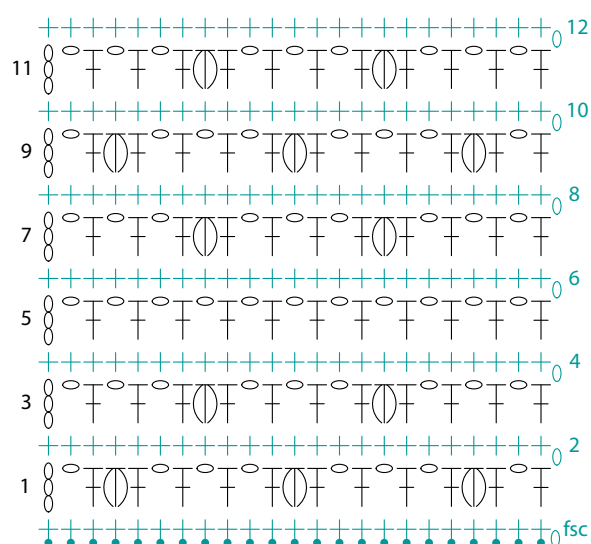
3 hdc-cl: (half double cluster)

*Yarn over hook, insert hook into next indicated stitch, yarn over hook and draw up a loop; rep from * twice in same stitch, yarn over hook and draw yarn through all loops on hook.

fsc (foundation single crochet): Ch 2 (does not count as fsc), insert hook in 2nd ch from hook, yarn over and pull up loop, yarn over and draw through 1 loop (the "ch"), yarn over and draw through 2 loops (the "fsc"), * insert hook under 2 loops of the "ch" st of last fsc, yarn over and pull up loop, yarn over and draw through 1 loop, yarn over and draw through 2 loops, rep from * for length of foundation.

FILET CLUSTER STITCH PATTERN

See stitch diagram **AT DIRECTION** for assistance.
(multiple of 8 plus 7)



Filet Cluster Stitch Pattern

Row 1 (WS): Ch 4, sk first 2 sc, *dc in next sc, 3 hdc-cl in next sc, [dc in next sc, ch 1, sk next sc] 3 times; rep from * across to last 5 sc, dc in next sc, 3 hdc-cl in next sc, dc in next sc, ch 1, sk next sc, dc in last sc, turn.

Row 2: Ch 1, sc in ea dc, ch-1 sp, and hdc-cl across to tch, sc in 4th and 3rd ch of tch, turn.

Row 3: Ch 4, sk first 2 sc, [dc in next sc, ch 1, sk next sc] twice, *dc in next sc, 3 hdc-cl in next sc, [dc in next sc, ch 1, sk next sc] 3 times; rep from * across to last sc, dc in last sc, turn.

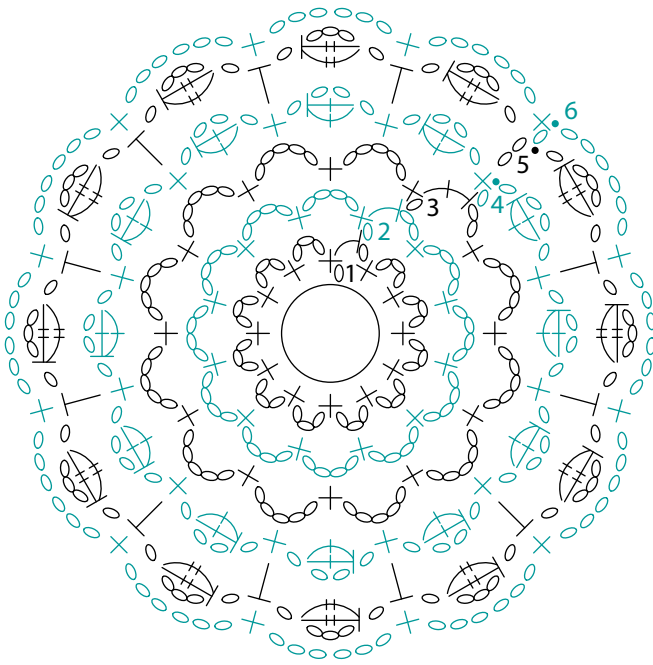
Row 4: Rep Row 2.

Row 5: Ch 4, sk first 2 sc, [dc in next sc, ch 1, sk next sc] across to last sc, dc in last sc, turn.

Rows 6-7: Rep Rows 2-3.

Row 8: Rep Row 2.

Rep Rows 1-8 to desired length.



Marseille Motif Diagram

PATTERN

RIGHT PANEL

MARSEILLE MOTIF

Make 1, Join 17 (17, 23, 23, 23).

Make an adjustable ring,

Rnd 1(RS): Ch 1, [sc in ring, ch 3] 11 times, sc in ring, ch 1, hdc in first sc, do not turn. (12 sc)

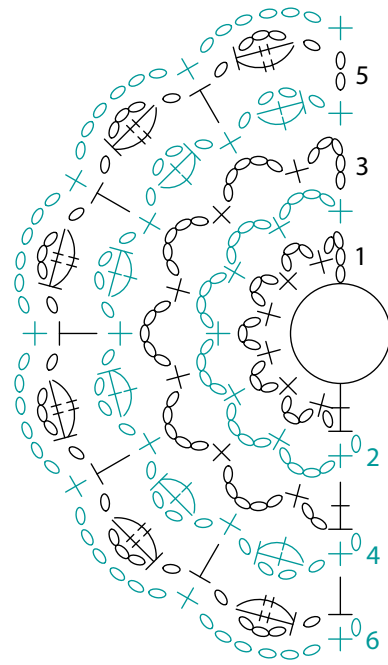
Rnd 2: Ch 1, sc around post of hdc, *ch 4, sc in next ch-3 sp; rep from * around to last ch-sp, ch 2, hdc in first sc (counts as ch-4 sp), do not turn. (12 ch-4 sps)

Rnd 3: Ch 1, sc around post of hdc, *ch 5, sc in next ch-4 sp; rep from * around to last ch-sp, ch 2, dc in first sc (counts as ch-5 sp), do not turn. (12 ch-5 sps)

Rnd 4: Ch 1, sc around post of dc, *ch 3, 2 dc-cl in 3rd ch from hook, ch 1, sc in next ch-5 sp; rep from * around to last ch-sp, ch 3, 2 dc-cl in first ch, ch 1, sl st in first sc, do not turn. (12 dc-cl)

Rnd 5: Ch 6, 2 tr-cl in 4th ch from hook, ch 1, *hdc in next sc, ch 4, 2 tr-cl in 4th ch from hook, ch 1; rep from * around, sl st to 2nd ch of tch, do not turn. (12 tr-cl)

Rnd 6: Ch 1, sc in same ch, *ch 6, sc in next hdc; rep from * around to last hdc, ch 6, sl st to first sc, fasten off. (12 ch-6 sps)



Half Motif Diagram

HALF MOTIF

Join 0 (0, 2, 2, 2).

Make an adjustable ring,

Row 1(RS): Ch 4 (counts as dc, ch-1 sp), [sc in ring, ch 3] 5 times, sc in ring, ch 1, dc in ring, turn. (7 ch-sps)

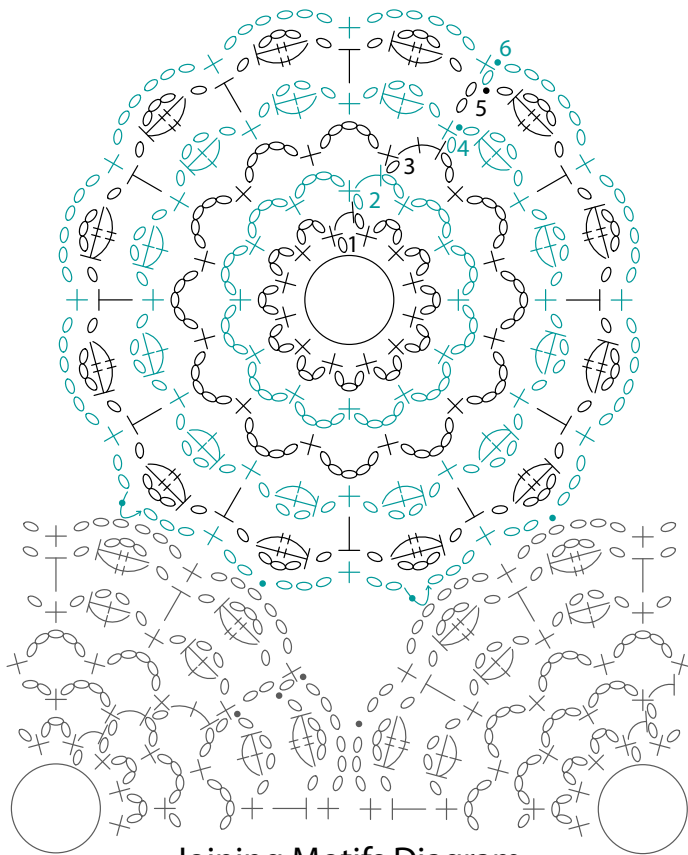
Row 2: Ch 1, sc in dc, *ch 4, sc in next ch-3 sp; rep from * around, turn. (6 ch-4 sps)

Row 3: *Ch 5, sc in next ch-4 sp; rep from * around to last ch-sp, ch 2, dc in last sc, turn. (7 ch-sps)

Row 4: Ch 1, sc in dc, *ch 3, 2 dc-cl in 3rd ch from hook, ch 1, sc in next ch-5 sp; rep from * around, turn. (6 dc-cl)

Row 5: Ch 6, 2 tr-cl in 4th ch from hook, ch 1, *hdc in next sc, ch 4, 2 tr-cl in 4th ch from hook, ch 1; rep from * around, hdc in last sc, turn. (6 tr-cl)

Row 6: Ch 1, sc in hdc, *ch 6 join, sc in next hdc; rep from * around to tch, ch 6 join, sc in 2nd ch of tch, fasten off. (6 ch-6 sps)



Joining Motifs Diagram

JOINING MOTIFS

Join motifs by substituting a "ch 6 join" for a "ch 6" on adjoining ch-sps in adjacent motifs on Rnd 6. Join 2 ch-sps on each adjacent motifs. See layouts for location of motifs. Do not join "A/B" motifs together, the shoulder seam will be joined later

LEFT PANEL

Fsc 67, 75, 83, 95, 103.

Row 1 (WS): Ch 5 (counts as tr, ch-1 sp), dc in first sc, (XL, 2X) ch 1, sk 1 sc, dc in next sc, (all) *3 hdc-cl in next sc, dc in next sc, [ch 1, sk 1 sc, dc in next sc] 3 times; rep from * across to last 2 (2, 2, 4, 4) sc, 3 hdc-cl in next sc, (XL, 2X) dc in next sc, ch 1, sk 1 sc, (all) (dc, ch 1, tr) in last sc, turn. (34, 38, 42, 48, 52 dc)

Row 2: Ch 1, sc in tr, sc in ea dc, ch-1 sp, and hdc-cl across to tch, sc in 5th and 4th ch of tch, turn. (71, 79, 87, 99, 107 sc)

Row 3: Ch 5 (counts as tr, ch-1 sp), dc in first sc, (XL, 2X) ch 1, sk 1 sc, dc in next sc, (all) * [ch 1, sk 1 sc, dc in next sc] 3 times, 3 hdc-cl in next sc, dc in next sc;

rep from * across to last 6 (6, 6, 8, 8) sc, [ch 1, sk 1 sc, dc in next sc] 3 (3, 3, 4, 4) times, (ch 1, tr) in last sc, turn. (36, 40, 44, 50, 54 dc)

Row 4: Rep Row 2. (75, 83, 91, 103, 111 sc)

Row 5: Ch 5 (counts as tr, ch-1 sp), dc in first sc, *ch 1, sk 1 sc, dc in next sc; rep from * across to last sc, (ch 1, tr) in last sc, turn. (39, 43, 47, 53, 57 ch-sps)

Row 6: Rep Row 2. (79, 87, 95, 107, 115 sc)

Row 7: Ch 4 (counts as dc, ch-1 sp), sk first 2 sc, (XL, 2X) dc in next sc, ch 1, sk next sc, (all) *dc in next sc, 3 hdc-cl in next sc, [dc in next sc, ch 1, sk next sc] 3 times; rep from * across to last 5 (5, 5, 7, 7) sc, dc in next sc, 3 hdc-cl in next sc, (XL, 2X) dc in next sc, ch 1, sk 1 sc, (all) dc in next sc, ch 1, sk next sc, dc in last sc, turn.

Row 8 and all further even rows: Rep Row 2 of filet cluster stitch pattern.

Row 9: Working straight without increasing, Rep Row 3 of filet cluster stitch pattern with 3 (3, 3, 4, 4) ch-1 sps before first and after last 3 hdc-cl.

Row 11: Rep Row 1 of filet cluster stitch pattern with 1 (1, 1, 2, 2) ch-1 sps before first and after last 3 hdc-cl.

Row 13: Rep Row 5 of filet cluster stitch pattern. Rep Rows 7-14 once (once, once, twice, twice) more.

(S) Rep Rows 7-8 once.

(M, L) Rep Rows 7-10 once.

FRONT NECKLINE

Row 1 (WS): Ch 3 (counts as dc), sk 2 sc, dc in next sc, cont in filet cluster stitch pattern for 4 (5, 5, 5, 5) hdc-cl with 2 (0, 0, 1, 1) ch-1 sp before first 3 hdc-cl, dc in next sc, (L, XL, 2X) ch 1, sk next sc, dc in next sc, (all) sk next sc, dc in next sc, leave remaining sts unworked, turn. (18, 20, 21, 22, 22 dc)

Row 2: Ch 1, sk first dc, sc in ea dc, ch-1 sp, and hdc-cl across to tch, leave tch unworked, turn. (31, 35, 37, 39, 39 sc)

Row 3: Ch 3 (counts as dc), sk 2 sc, dc in next sc, (M, L) cont in Row 5 of filet cluster stitch pattern across to last 2 sc, dc in last sc, turn. (S, XL, 2X) cont in filet cluster stitch pattern across to last 2 sc with 3 (2, 2) ch-1 sps before first hdc-cl, dc in last sc, turn. (16, 18, 19, 20, 20 dc)

Row 4: Rep Row 2 of front neckline. (27, 31, 33, 35, 35 sc)

Row 5: Ch 3 (counts as dc), sk 2 sc, dc in next sc, (S) cont in Row 5 of filet cluster stitch pattern across, turn. (M, L, XL, 2x) cont in filet cluster stitch pattern across with 2 (2, 3, 3) ch-1 sps before first hdc-cl, turn. (14, 16, 17, 18, 18 dc)

Row 6: Ch 1, sc in first dc, sc in ea dc, ch-1 sp, and hdc-cl across to tch, leave tch unworked, turn. (25, 29, 31, 33, 33 sc)

Row 7: Ch 3 (counts as dc), sk 2 sc, dc in next sc, (S, M, L) cont in filet cluster stitch pattern across with 1 (3, 3) ch-1 sps before first hdc-cl, turn. (XL, 2X) cont in Row 5 of filet cluster stitch pattern across, turn. (13, 15, 16, 17, 17 dc)

Row 8: Rep Row 6 of front neckline. (23, 27, 29, 31, 31 sc)

Row 9: Ch 3 (counts as dc), sk 2 sc, dc in next sc, cont in filet cluster stitch pattern across with 2 (0, 0, 1, 1) ch-1 sps before first hdc-cl, turn. (12, 14, 15, 16, 16 dc)

Row 10: Rep Row 6 of front neckline. (21, 25, 27, 29, 29 sc)

Row 11: Ch 3 (counts as dc), sk 2 sc, dc in next sc, (M, L) cont in Row 5 of filet cluster stitch pattern across, turn. (S, XL, 2X) cont in filet cluster stitch pattern across with 3 (2, 2) ch-1 sps before first hdc-cl, turn. (11, 13, 14, 15, 15 dc)

Row 12: Rep Row 6 of front neckline. (19, 23, 25, 27, 27 sc)

Rep Rows 5-10 of front neckline once. (L, XL, 2X)
Rep Rows 11-12 once. (13, 17, 17, 19, 19 sc)

FRONT STRAP

Row 1: (S, L, XL, 2X) Cont in filet cluster stitch pattern across with 0 (3, 0, 0) ch-1 sps before first hdc-cl, leave tch unworked, turn. (M) cont in Row 5 of filet cluster stitch pattern across, leave tch unworked, turn. (7, 9, 9, 10, 10 dc)

Row 2 and all even rows: Rep Row 2 of filet cluster stitch pattern across. (13, 17, 17, 19, 19 sc)

Row 3: (S, XL, 2X) cont in Row 5 of filet cluster stitch pattern across, turn. (M, L) cont in filet cluster stitch pattern across with 0 (1) ch-1 sps before first hdc-cl, turn.

(S) Row 4: Rep Row 2 of front strap, move to front

shoulder shaping.

(M, L, XL, 2X) Row 5: Cont in filet cluster stitch pattern across with 2 (3, 0, 0) ch-1 sps before first hdc-cl, turn.

(M) Row 6: Rep Row 2 of front strap, move to front shoulder shaping.

(L) Row 7: Cont in Row 5 of filet cluster stitch pattern, turn.

(L) Row 8: Rep Row 2 of front strap, move to front shoulder shaping.

(XL, 2X) Row 7: Cont in filet cluster stitch pattern across with 2 (2) ch-1 sps before first hdc-cl, turn.

(XL, 2X) Row 9: Cont in filet cluster stitch pattern across with 0 (0) ch-1 sps before first hdc-cl, turn.

(XL) Row 10: Rep Row 2 of front strap, move to front shoulder shaping.

(2X) Row 11: Cont in Row 5 of filet cluster stitch pattern across, turn.

(2X) Row 12: Rep Row 2 of front strap, move to front shoulder shaping.

FRONT SHOULDER

Row 1: Ch 4 (counts as dc, ch-1 sp), sk 2 sc, [dc in next sc, ch 1, sk next sc] 1 (2, 2, 2) times, [hdc in next sc, ch 1, sk next sc] 2 (2, 2, 3, 3) times, [sc in next sc, ch 1, sk next sc] 2 (3, 3, 3, 3) times, sl st in last sc, turn. (6, 8, 8, 9, 9 ch-1 sps)

Row 2: Sk sl st, sl st in next ch-1 sp, sc in next sc, sc in ea st across to tch, sc in 4th and 3rd ch of tch, fasten off.

BACK ARMHOLE SHAPING

Sk 9 (9, 13, 21, 29) sc from end of Row 1 of front neckline, sl st to next sc.

Row 1: Ch 3 (counts as dc), sk next sc, dc in next sc, cont in filet cluster stitch pattern with 0 (0, 1, 1, 1) ch-1 sps before first hdc-cl, turn. (18, 20, 21, 22, 22 dc)

Row 2: Ch 1, sc in first dc, sc in ea dc, ch-1 sp, and hdc-cl across to tch, leave tch unworked, turn. (33, 37, 39, 41, 41 sc)

Row 3: Ch 3 (counts as dc), sk 2 sc, dc in next sc, (M, L) cont in Row 5 of filet cluster stitch pattern across, turn. (S, XL, 2X) cont in filet cluster stitch pattern across with 1 (2, 2) ch-1 sps before first hdc-cl, turn. (17, 19, 20, 21, 21 dc)

Row 4: Rep Row 2 of Back Armhole Shaping. (31, 35, 37, 39, 39 sc)

Row 5: (S) Cont in Row 5 of filet cluster stitch pattern across, turn. (M, L, XL, 2X) Cont in filet cluster stitch pattern across with 3 (0, 0, 0) ch-1 sps before first hdc-cl, turn. (16, 18, 19, 20, 20 dc)

Row 6 and following even rows: Rep Row 2 of filet cluster stitch pattern.

Row 7: (S, M, L) cont in filet cluster stitch pattern across with 1 (1, 2) ch-1 sps before first hdc-cl, turn. (XL, 2X) cont in Row 5 of filet cluster stitch pattern across, turn.

Row 9: Cont in filet cluster stitch pattern across with 3 (3, 0, 0, 0) ch-1 sps before first hdc-cl, turn.

Row 11: (M, L) cont in Row 5 of filet cluster stitch pattern across, turn. (S, XL, 2X) cont in filet cluster stitch pattern across with 1 (2, 2) ch-1 sps before first hdc-cl, turn.

(S) Rep Rows 5-6 of back armhole shaping. (M) Rep Rows 5-8 of back armhole shaping. (L) Rep Rows 5-12 of back armhole shaping. (XL) Rep Rows 5-12 and 5-6 once again of back armhole shaping. (2X) Rep Rows 5-12 and 5-8 once again of back armhole shaping.

BACK NECKLINE

Row 1: (S, M, L, 2X) Cont in filet cluster stitch pattern for 7 (9, 9, 10) dc with 1 (3, 0, 0) ch-1 sp before first hdc-cl, turn. (XL) Cont in Row 5 of filet cluster stitch pattern for 10 dc, turn.

Row 2 and all even rows: Rep Row 2 of filet cluster stitch pattern.

Row 3: (S, L, XL, 2X) Cont in filet cluster stitch pattern across with 3 (2, 0, 2) ch-1 sp before first hdc-cl, turn. (M) Cont in Row 5 of filet cluster stitch pattern across, turn.

Row 5: Cont in filet cluster stitch pattern with 1 (3, 0, 2, 0) ch-1 sps before first hdc-cl, turn.

Row 7: (S, L, 2X) Cont in Row 5 of filet cluster stitch pattern, turn. (M, XL) Cont in filet cluster stitch pattern with 1 (0) ch-1 sps before first hdc-cl, turn.

Row 9: Sl st in first sc, [ch 1, sk next sc, sc in next sc] 2 (3, 3, 3, 3) times, [ch 1, sk next sc, hdc in next sc] 2 (2, 2, 3, 3) times, [ch 1, sk next sc, dc in next sc] 2 (3, 3, 3, 3) times, turn. (6, 8, 8, 9, 9 ch-1 sps)

Row 10: Ch 1, sc in ea st across to last ch-1 sp, sl st in last ch-1 sp, fasten off.

SLEEVE

Make 2, Fsc 39 (43, 51, 55, 63).

Row 1(WS): Ch 4 (counts as dc, ch 1), sk first 2 sc, (M/L) dc in next sc, ch 1, sk next sc, (all)*dc in next sc, 3 hdc-cl in next sc, [dc in next sc, ch 1, sk next sc] 3 times; rep from * across to last 5 (7, 7, 5, 5) sc, dc in next sc, 3 hdc-cl in next sc, dc in next sc, ch 1, sk next sc, (M/ L) dc in next sc, ch 1, sk next sc, (all) dc in last sc, turn. (20, 22, 26, 28, 32 dc)

Row 2 and all even rows: Rep Row 2 of filet cluster stitch pattern across.

Row 3: Cont in filet cluster stitch pattern across with 3 (4, 4, 3, 3) ch-1 sps before first hdc-cl, turn.

Row 5: Cont in Row 5 of filet cluster stitch pattern across, turn.

Row 7: Ch 5 (counts as tr, ch-1 sp), dc in first sc, cont in filet cluster stitch pattern across to last sc with 4 (5, 5, 4, 4) ch-1 sp before first hdc-cl, (dc, ch 1, tr) in last sc, turn. (20, 22, 26, 28, 32 dc)

Row 9: Cont in filet cluster stitch pattern across with 2 (3, 3, 2, 2) ch-1 sps before first hdc-cl, turn. (22, 24, 28, 30, 34 dc)

Row 11: Cont in filet cluster stitch pattern across with 0 (1, 1, 0, 0) ch-1 sps before first hdc-cl, turn. Row 13: Rep Row 5 of sleeve.

Row 15: Ch 5 (counts as tr, ch-1 sp), dc in first sc, cont in filet cluster stitch pattern across to last sc with 1 (2, 2, 1, 1) ch-1 sps before first hdc-cl, turn.

Row 17: Cont in filet cluster stitch pattern across with 3 (4, 4, 3, 3) ch-1 sps before first hdc-cl, turn. (24, 26, 30, 32, 36 dc)

Row 19: Cont in filet cluster stitch pattern across with 1 (2, 2, 1, 1) ch-1 sps before first hdc-cl, turn.

Row 21: Rep Row 5 of sleeve.

Row 23: Ch 5 (counts as tr, ch-1 sp), dc in first sc, cont in filet cluster stitch pattern across to last sc with 2 (3, 3, 2, 2) ch-1 sps before first hdc-cl, turn.

Row 25: Cont in filet cluster stitch pattern across with 0 (1, 1, 0, 0) ch-1 sps before first hdc-cl, turn. (26, 28, 32, 34, 38 dc)

Row 27: Cont in filet cluster stitch pattern across with 2 (3, 3, 2, 2) ch-1 sps before first hdc-cl, turn.

Row 29: Rep Row 5 of sleeve.

Row 31: Ch 5 (counts as tr, ch-1 sp), dc in first sc, cont in filet cluster stitch pattern across to last sc with 3 (4, 4, 3, 3) ch-1 sps before first hdc-cl, turn.

Row 33: Cont in filet cluster stitch pattern across with 1 (2, 2, 1, 1) ch-1 sps before first hdc-cl, turn. (28, 30, 34, 36, 40 dc)

Row 35: Cont in filet cluster stitch pattern across with 3 (4, 4, 3, 3) ch-1 sps before first hdc-cl, turn.

Row 37: Rep Row 5 of sleeve.

(S, M) Row 38: Rep Row 2 of sleeve, move to cap shaping, fasten off.

(L, XL, 2X) Row 39: Ch 5 (counts as tr, ch-1 sp), dc in first sc, cont in filet cluster stitch pattern across to last sc with 4 (5, 5, 4, 4) ch-1 sps before first hdc-cl, turn.

(L, XL, 2X) Row 41: Cont in filet cluster stitch pattern across with 2 (3, 3, 2, 2) ch-1 sps before first hdc-cl, turn. (36, 38, 42 dc)

(L, XL, 2X) Row 43: Cont in filet cluster stitch pattern across with 0 (1, 1, 0, 0) ch-1 sps before first hdc-cl, turn.

(L, XL, 2X) Row 45: Rep Row 5 of sleeve.

(L, XL, 2X) Row 46: Rep Row 2 of sleeve, move to cap shaping, fasten off.

CAP SHAPING

Sk 4 sc, join with sl st to next sc.

Row 1: Ch 3 (counts as dc), sk 2 sc, dc in next sc, cont in filet cluster stitch pattern across to last 6 sc with 0 (1, 2, 1, 1) ch-1 sps before first hdc-cl, sk next sc, dc in next sc, leave last 4 sc unworked, turn. (24, 26, 32, 34, 38 dc)

Row 2 and next even rows: Ch 1, sk first dc, sc in ea dc, ch-1 sp, and hdc-cl across to tch, leave tch unworked, turn. (43, 47, 59, 63, 71 sc)

Row 3: Ch 3 (counts as dc), sk 2 sc, dc in next sc, cont in filet cluster stitch pattern across to last 2 sc with 1 (2, 3, 2, 2) ch-1 sps before first hdc-cl, dc in last sc, turn. (22, 24, 30, 32, 36 dc)

Row 5: Ch 3 (counts as dc), sk 2 sc, dc in next sc, cont in filet cluster stitch pattern across to last 2 sc with 2 (3, 0, 3, 3) ch-1 sps before first hdc-cl, dc in last sc, turn. (20, 22, 28, 30, 34 dc)

Row 7: Ch 3 (counts as dc), sk 2 sc, dc in next sc, cont in Row 5 of filet cluster stitch pattern across to last 2 sc, dc in last sc, turn. (18, 20, 26, 28, 32 dc)

Row 9: Ch 3 (counts as dc), sk 2 sc, dc in next sc, cont in filet cluster stitch pattern across to last 2 sc with 0 (1, 2, 1, 1) ch-1 sps before first hdc-cl, dc in

last sc, turn. (16, 18, 24, 26, 30 dc)

Row 11: Ch 3 (counts as dc), sk 2 sc, dc in next sc, cont in filet cluster stitch pattern across to last 2 sc with 1 (2, 3, 2, 2) ch-1 sps before first hdc-cl, dc in last sc, turn. (14, 16, 22, 24, 28 dc)

Row 13: Ch 3 (counts as dc), sk 2 sc, dc in next sc, cont in filet cluster stitch pattern across to last 2 sc with 2 (3, 0, 3, 3) ch-1 sps before first hdc-cl, dc in last sc, turn. (12, 14, 20, 22, 26 dc)

(S) Row 14: Rep Row 2 of cap shaping, fasten off.

Row 15: Ch 3 (counts as dc), sk 2 sc, dc in next sc, cont in Row 5 of filet cluster stitch pattern across to last 2 sc, dc in last sc, turn. (12, 18, 20, 24 dc)

(M) Row 16: Rep Row 2 of cap shaping, fasten off.

Row 17: Ch 3 (counts as dc), sk 2 sc, dc in next sc, cont in filet cluster stitch pattern across to last 2 sc with 2 (1, 1) ch-1 sps before first hdc-cl, dc in last sc, turn. (16, 18, 22 dc)

(L) Row 18: Rep Row 2 of cap shaping, fasten off.

Row 19: Ch 3 (counts as dc), sk 2 sc, dc in next sc, cont in filet cluster stitch pattern across to last 2 sc with 2 (2) ch-1 sps before first hdc-cl, dc in last sc, turn. (16, 20 dc)

(XL) Row 20: Rep Row 2 of cap shaping, fasten off.

Row 21: Ch 3 (counts as dc), sk 2 sc, dc in next sc, cont in filet cluster stitch pattern across to last 2 sc with 3 ch-1 sps before first hdc-cl, dc in last sc, turn. (18 dc)

Row 23: Ch 3 (counts as dc), sk 2 sc, dc in next sc, cont in Row 5 of filet cluster stitch pattern across to last 2 sc, dc in last sc, turn. (16 dc)

(2X) Row 24: Rep Row 2 of cap shaping, fasten off.

FINISHING

BLOCKING

Pin left panel, right panel, and sleeves to schematic size. Spray with water and allow to dry.

Seam left panel shoulders with whipstitch.

LEFT PANEL EDGING

Place stitch markers in all outside and inside corners. Join yarn to RS bottom edge in middle with sl st

Rnd 1 (RS): Ch 1, [sc evenly across edge to m, 2 sc in next st] 3 times, sc evenly across edge to

m, sc2tog in next st, sc evenly across edge to m, sc3tog in next st, sc evenly across edge to m, 3 sc in next st, [sc evenly across edge to m, 2 sc in next st] twice, sc evenly across to first sc, sl st to first sc, turn.

Rnds 2-3: Ch 3, [dc in ea st to m, 3 dc in next st] 3 times, dc in ea st to m, dc3tog in next st, dc in ea st to m, dc5tog in next st, dc in ea st to m, 5 dc in next st, [dc in ea st to m, 3 dc in next st] twice, dc in ea st to tch, sl st to top of tch, turn.

Rnd 4: Ch 1, [sc in ea st to m, 2 sc in next st] 3 times, sc in ea st to m, sc2tog in next st, sc in ea st to m, sc3tog in next st, sc in ea st to m, 3 sc in next st, [sc in ea st to m, 2 sc in next st] twice, sc in ea st to first sc, sl st to first sc, turn.

Rnd 5: Ch 1, sl st in ea sc around, fasten off.

JOIN RIGHT PANEL SHOULDERS

Sk 2 ch-6 sp along neckline of Motif "A" from last join. Join yarn to RS of "A" motif with sl st in next ch-6 sp (at star in layout). *Ch 3, sc in same ch-6 sp on adjacent Motif "B", ch 3, sc in next ch-6 sp on Motif A; rep from * 3 times, ch 3, sc in same ch-6 sp on adjacent Motif "B", fasten off.

RIGHT PANEL ARMHOLE EDGING

(S, M) Join yarn to top ch-6 sp on Motif A in armhole with sl st (same ch-6 sp as shoulder join), (sc, ch 3, sc) in same ch-6 sp, *ch 4, (sc, ch 3, sc) in next ch-6 sp; rep from * 4 times around armhole, ch 4, sl st in join between motifs; rep from * 5 times, ch 4, sl st to middle of shoulder join, ch 4, sl st to first sc, fasten off.

(L, XL, 2X) Join yarn to top ch-6 sp on Motif A in armhole with sl st (same ch-6 sp as shoulder join), (sc, ch 3, sc) in same ch-6 sp, *ch 4, (sc, ch 3, sc) in next ch-6 sp; rep from * twice around armhole, ch 4, sc evenly down edge of half motif; rep from * twice on motif in center of armhole, ch 4, sc evenly up edge of half motif; rep from * 3 times on opposite Motif B, ch 4, sl st to middle of shoulder join, ch 4, sl st to first sc, fasten off.

RIGHT PANEL EDGING

Join yarn to RS at middle motif at bottom edge of right panel at any ch-6 sp with sl st (around star on bottom edge of layout).

Rnd 1: (Sc, ch 4, sc) in same ch-6 sp, *ch 5, (sc, ch 4, sc) in next ch-6 sp; rep from * around entire edge of panel to first sc, ch 2, dc in first sc, do not turn.

Rnd 2: Ch 2, 2 dc-cl around post of dc, *ch 3, 2 dc-cl in 3rd ch from hook, ch 1, sk next ch-4 sp, (3 dc-cl, ch 5, 3 dc-cl) in next ch-5 sp; rep from * around panel to last ch-4 sp, ch 3, 2 dc-cl in 3rd ch from hook, ch 1, sk last ch-4 sp, 3 dc-cl in first ch-sp, ch 5, sl st to first dc-cl, do not turn.

Rnd 3: Ch 1, *sc in next ch, ch 5, sk 2 dc-cl, sc in last ch, (sc, ch 5, sc) in next ch-5 sp; rep from * around panel, sl st in first sc, fasten off.

SEAMING

Pin sleeve to left front panel with right sides facing. Whipstitch sleeve to side panel, whipstitch underarm seam. Repeat for right panel and sleeve.

CUFF EDGING

Join yarn to RS underarm edge with sl st.

Rnd 1 (RS): Ch 1, sc evenly around edge, sl st to first sc, turn.

Rnd 2: Ch 3, dc in ea sc around, sl st to top of tch, turn.

Rnd 3: Ch 3, dc in ea dc around, sl st to top of tch, turn.

Rnd 4: Ch 1, sc in ea dc around, sl st to first sc, turn.

Rnd 5: Ch 1, sl st in ea sc around, fasten off.

Overlap right and left panel so that the bust width measures 17(19-21½-24-25½)". Pin right and left panels together on back. Sew right and left panel backs together along both free edges from collar to edge. Using photo as a guide and using ch-sps on right panel as buttonholes, sew buttons to left panel.

ABBREVIATIONS & TERMS

Knit

beg: beginning
CC: contrasting color
cn: cable needle
cont: continue
dec: decrease
dpn: double pointed needles
est: established
inc: increase
K: knit
KSP: Knit 1, then slip stitch back to left hand needle, lift 2nd stitch on left hand needle back over returned stitch and replace returned stitch on RH needle (1 stitch decreased).
K2SP: Knit 2 together, then slip stitch back to left hand needle, lift second stitch on left hand needle back over returned stitch and replace returned stitch on right hand needle (2 stitches decreased).
LH: left hand
lp(s): loop(s)
LT2 (Left Twist): Skip 1 stitch, knit second stitch through back loop, then knit both stitches together through back loop
MC: main color
M1k: Pick up horizontal strand between stitch just worked and next stitch, place on left hand needle, knit this stitch (1 stitch increased).
M1p: Pick up horizontal strand between stitch just worked and next stitch, place on left hand needle, purl this stitch (1 stitch increased).
p: purl
pat(s): pattern(s)
pm: place marker
psso: pass slip stitch over knit stitch
p2sso: pass 2 slip stitches over knit stitch
rem: remaining
rep: repeat
RH: right hand
rnd(s): round(s)
RS: right side
RT2 (Right Twist): Knit 2 stitches together, leaving them on the left hand needle, then knit the first stitch again slipping both stitches to the right hand needle.
SKP: slip 1, knit 1, pass slip stitch over
sl: slip
SSK: Slip 2 stitches knitwise, insert point of left hand needle through fronts of these 2 stitches and knit 2 together.
st(s): stitch(es)

TBL: through back loop(s)
tog: together
WS: wrong side
wyib: with yarn in back
wyif: with yarn in front
yo: yarn over
end on WS: end having just completed a Wrong Side row.
end on RS: end having just completed a Right Side row
STOCKINETTE ST (St st): Knit 1 row, purl 1 row alternately when working on straight needles. The knit side is the right side of work. Knit EVERY round when working in the round on a circular needle. Reverse **St st (Rev St st):** Purl 1 row, knit 1 row alternately when working on straight needles. The purl side is the right side of the work. Purl EVERY round when working in the round on a circular needle.
GARTER ST: Knit EVERY row when working on straight needles. Knit 1 round, purl 1 round when working on a circular needle.

Crochet

bphdc (back post half double crochet): Yarn over, insert hook from back to front to back around post of half double crochet one row below, yarn over, draw up a loop, yarn over, draw through all 3 loops on hook (this is worked on even # or wrong side rows).
bptr (back post triple): Yarn over twice, insert hook from back to front around post of stitch on previous row and pull up a loop, (yarn over and draw through 2 loops on hook) 3 times.
ch: chain
dc: double crochet
fphdc (front post half double crochet): Yarn over, insert hook from front to back to front around post of half double crochet one row below, yarn over, draw up a loop, yarn over, draw through all 3 loops on hook (this is worked on odd # or right side rows)
fptr (front post triple): Yarn over twice, insert hook from front to back around post of stitch on previous row and pull up a loop, (yarn over and draw through 2 loops on hook) 3 times.
hdc: half double crochet
hdctbl: Half double crochet worked in the back loop
hdctfl: Half double crochet worked in the front loop
sl st: slip stitch
sp: space
tr: treble