

**Skill level:** Intermediate  
Shown in size Small

**sizes**

Directions are for size Small.  
Changes for sizes Medium and Large are in parentheses.

**finished measurements**

Lower Edge – 52(58-63)"  
Upper Edge – 25(27½-30)"  
Length – 18"

**materials**

7(8-9) Hanks **BERROCO FUJI**  
(50 grs), #9203 Sandy  
Crochet hook, size 5.00 mm (H/8)  
OR SIZE TO OBTAIN GAUGE  
Tapestry needle for weaving in ends  
spray bottle with water and straight pins for blocking.

**gauge**

2 sh (2SR) by 10 rows (2 RR) = 5.75"  
x 4.25" in stitch pattern.

**Free Pattern**



*Berroco Fuji™*



**Find this yarn  
at your LYS**

Our supercharged store locator goes above and beyond the ordinary. Innovatively linked to our inventory system, search for a yarn in your area and you'll pinpoint LYS's that have a proven history of ordering that product. A handy listing of all of the Berroco yarns the store carries and easy access to driving directions are also right at your finger tips. *Find all yarns now.*

Don't forget to connect with us on social media!



**NOTE:** We recommend using yarns called for in our instructions. Every effort has been made to ensure that directions contained in this book are accurate and complete, however errors do occur. We cannot be responsible for variance of individual knitters, human or typographical errors.

All pattern PDFs are updated when corrections are made. In the event of finding an error, please make sure you've downloaded the most recent version.

## NOTES

Shawl is worked in the round from the top down from the collar to the cuff.

## STITCH GLOSSARY

**SR:** Stitch Repeat - Stitches to repeat for stitch pattern

**RR:** Row Repeat - Number of rows to repeat for stitch pattern

**Beg:** Beginning

**Sc:** Single Crochet

**Hdc:** Half Double Crochet

**Ch:** Chain

**Sk:** Skip

**Sl st:** Slip stitch

**Tch:** Turning chain

**Bet:** Between

**Yo:** Yarn over

**Tr:** Treble Crochet

**Dc:** Double Crochet



**ch-sp:** Chain Space

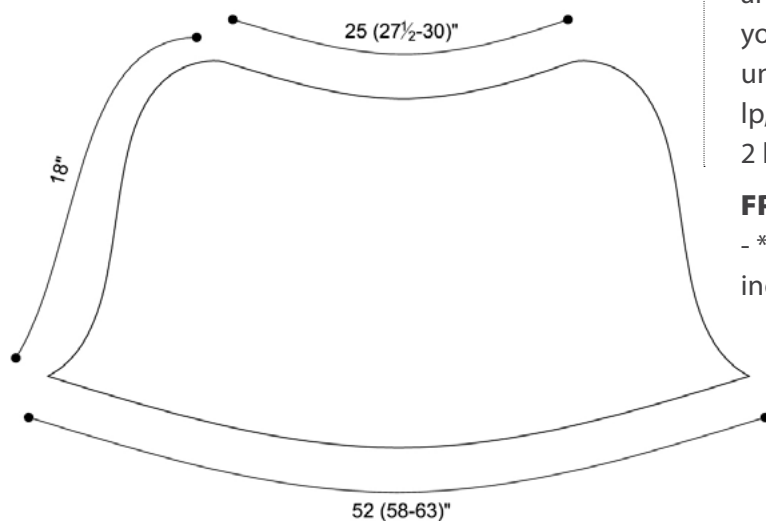
**Sh:** Shell - ([ch 1, dc] 7 times, ch 1) in ch-sp indicated

**FPtr:** Front Post Treble Crochet

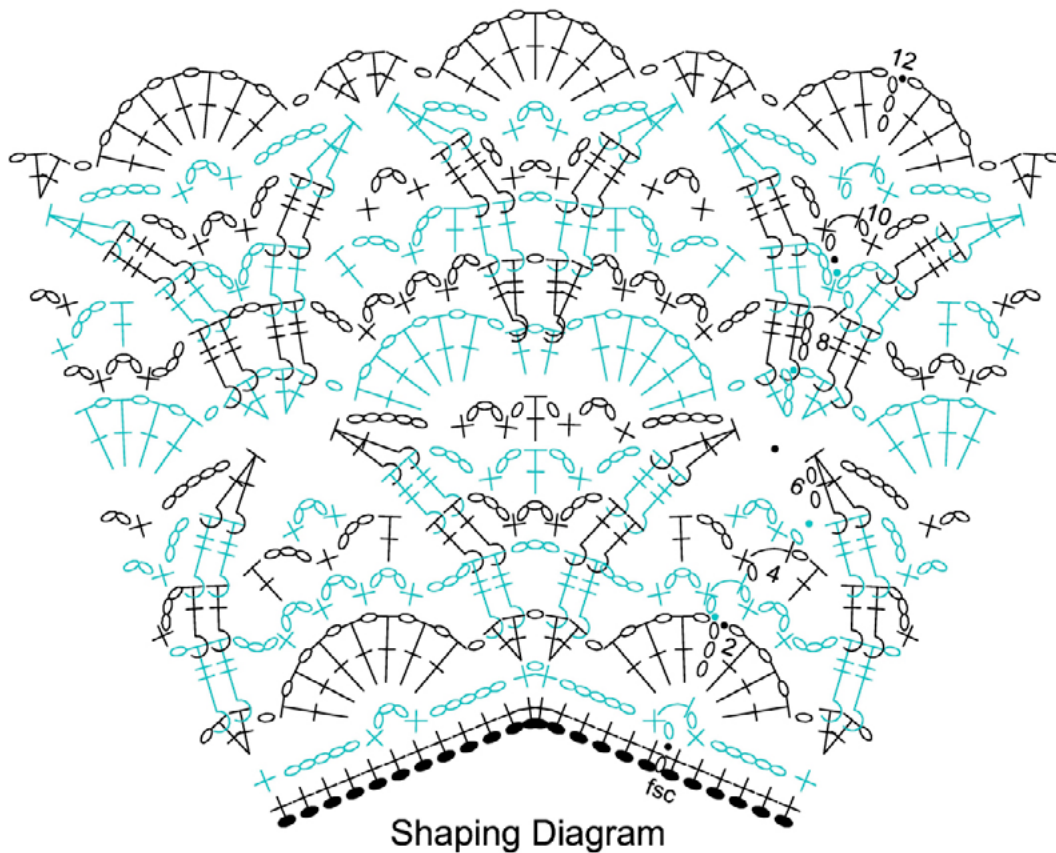
**FPdc:** Front Post Double Crochet

**Fsc:** Foundation Single Crochet - Ch 2 (does not count as fsc), insert hook in 2nd ch from hook, yo and pull up lp, yo and draw through 1 lp (the "ch"), yo and draw through 2 lps (the "fsc"), \* insert hook under 2 lps of the "ch" st of last fsc, yo and pull up lp, yo and draw through 1 lp, yo and draw through 2 lps, rep from \* for length of foundation.

**FPdc2tpg:** Front Post Double Crochet 2 Together - \*yo, insert the hook around the post of the next indicated stitch by inserting the hook from front to back to front around the post, yo and draw up a loop, yo and draw through two loops on the hook, rep from \* one more time, yo and draw through the remaining loops on the hook.







## PATTERN

### Increase Shaping

108 (120, 132) Fsc, sl st to first fsc, do not turn.

**Rnd 1(RS):** Ch 1, sc in first fsc, \*ch 5, sk 4 fsc, sc in next fsc, ch 1, sc in next fsc, ch 5, sk 4 fsc, sc in next fsc \*\*, ch 3, sc in next fsc; rep from \* across to last fsc ending at \*\*, sc in last fsc, ch 1, hdc in first sc, do not turn. (18, 20, 22 ch-5 sps)

**Rnd 2:** Ch 4 (counts as dc, ch 1), [dc, ch 1] 3 times around post of hdc (beg sh), \*sk next ch- 5 sp, 2 dc in next sc, ch 1, 2 dc in next sc, sk ch-5 sp -\*\*, sh in ch-3 sp; rep from \* around to beg sh ending at \*\*, ([ch 1, dc] 3 times, ch 1) in first ch-sp, sl st to 3rd ch of tch, do not turn. (9, 10, 11 sh)

**Rnd 3:** Sl st to next ch, ch 1, sc in same ch, ch 3, sc in next ch-1 sp, ch 3, \*sk 2 ch-1 sps, FPtr around next 2 dc, ch 3, FPtr around next 2 dc\*\*, ch 3, sk 2 ch-1 sps, [sc in next ch-1 sp, ch 3] 4 times; rep from \* around to first sh ending at \*\*, ch 3, sk 2 ch-1 sps, sc in next ch-1 sp, ch 3, sc in next ch-1 sp, ch 1, hdc in first sc, do not turn.

**Rnd 4:** Ch 1, sc around post of hdc, ch 3, dc in next ch-3 sp, sk next ch-3 sp, \*FPdc around next 2 tr, [ch

3, sc] twice in next ch-3 sp, ch 3, FPdc around next 2 tr\*\*, sk next ch-3 sp, dc in next ch-3 sp, ch 3, sc in next ch-3 sp, ch 3, dc in next ch-3 sp; rep from \* around to last 2 ch-3 sps ending at \*\*, sk next ch-3 sp, dc in last ch-3 sp, ch 1, hdc in first sc, do not turn.

**Rnd 5:** Ch 1, sc around post of hdc, ch 3, sc in next ch-3 sp, \*FPtr around next 2 dc, ch 3, sc in next ch-3 sp, ch 2, dc in next ch-3 sp, ch 2, sc in next ch-3 sp, ch 3, FPtr around next 2 dc\*\*, sc in next ch-3 sp, ch 3, sc in next ch-3 sp; rep from \* around to first sc ending at \*\*, sl st to first sc, do not turn.

**Rnd 6:** Ch 2, \*FPdc2tog over next 2 tr, ch 5, sc in next ch-3 sp, ch 3, sc in next ch-2 sp, ch 1, dc in next dc, ch 1, sc in next ch-2 sp, ch 3, sc in next ch-3 sp, ch 5, FPdc2tog over next 2 tr; rep from \* around, sl st to top of first FPdc2tog, do not turn.

**Rnd 7:** Ch 3 (counts as dc), dc in sp bet first and last FPdc2tog, \*sk ch-5 sp, ([ch 1, dc] five times, ch 1) in next ch-3 sp (half sh made), (dc, ch 1, dc) in next dc, half sh in next ch-3 sp, sk ch-5 sp\*\*, (2 dc, ch 1, 2 dc) in sp bet next 2 FPdc2tog; rep from \* around to last FPdc2tog ending at \*\*, 2dc in sp bet last and first

FPdc2tog, ch 1, sl st to top of tch, do not turn. (18, 20, 22 half sh)

**Rnd 8:** Ch 3, FPtr around tch, FPtr around next dc, \* ch 3, sk 2 ch-1 sps, [sc in next ch-1 sp, ch 3] 3 times, sk next ch-1 sp, 2 FPtr around next dc, ch 1, 2 FPtr around next dc, ch 3, sk next ch-1 sp, [sc in next ch-1 sp, ch 3] 3 times, sk 2 ch-1 sps, FPtr around next 2 dc\*\*, ch 2, FPtr around next 2 dc; rep from \* around to tch ending at \*\*, hdc in first tr, do not turn.

**Rnd 9:** Ch 1, sc around post of hdc, ch 3, FPdc around next 2 tr, \* sk next ch-3 sp, dc in next ch-3 sp, ch 3, sc in next ch-3 sp, ch 3, dc in next ch-3 sp, FPdc around next 2 tr, ch 2, FPdc around next 2 tr, dc in next ch-3 sp, ch 3, sc in next ch-3 sp, ch 3, dc in next ch-3 sp, sk next ch-3 sp, FPdc around next 2 tr, ch 3\*\*, sc in ch-2 sp, ch 3, FPdc around next 2 tr; rep from \* around to first sc ending at \*\*, sl st to first sc, do not turn.

**Rnd 10:** Sl st to next ch-sp, ch 1, sc in same ch-sp, ch 3, FPtr around next 2 dc, \*sc in next ch-3 sp, ch 3, sc in next ch-3 sp, sk 1 dc, FPtr around next 2 dc, ch 2, (sc, ch 2, sc) in next ch-2 sp, ch 2, FPtr around next 2 dc, sk 1 dc, sc in next ch-3 sp, ch 3, sc in next ch-3 sp, sk 1 dc, FPtr around next 2 dc\*\*, [ch 3, sc in next ch-3 sp] twice, ch 3, FPtr around next 2 dc; rep from \* around to last ch-3 sp ending at \*\*, ch 3, sc in last ch-3 sp, ch 1, hdc in first sc, do not turn.

**Rnd 11:** Ch 1, sc around post of hdc, ch 5, \* [FPdc2tog over next 2 tr] twice, ch 4, sk next ch-2 sp, (sc, ch 3, sc) in next ch-2 sp, ch 4, [FPdc2tog over next 2 tr] twice, ch 5\*\*, sk next ch-3 sp, (sc, ch 3, sc) in next ch-3 sp, ch 5; rep from \* around to last ch-3 sp ending at \*\*, sk last ch-3 sp, sc in first ch-sp, ch 1, hdc in first sc, do not turn.

## BODY (Digram on page 5)

**Rnd 12:** Ch 4, [dc, ch 1] 3 times around post of hdc, \*(2 dc, ch 1, 2 dc) bet next 2 FPdc2tog\*\*, sh in next ch-3 sp; rep from \* around to beg sh ending at \*\*, [ch 1, dc] 3 times in first ch-sp, ch 1, sl st to 3rd ch of tch, do not turn. (18, 20, 22 sh)

**Rnd 13:** Sl st to next ch, ch 1, sc in same ch, ch 3, sc in next ch-1 sp, ch 3, \*sk 2 ch-1 sps, FPtr around next 2 dc, ch 2, FPtr around next 2 dc\*\*, ch 3, sk 2 ch-1 sps, [sc in next ch-1 sp, ch 3] 4 times; rep from \* around to first sh ending at \*\*, ch 3, sk 2 ch-1 sps,

sc in next ch-1 sp, ch 3, sc in next ch-1 sp, ch 1, hdc in first sc, do not turn.

**Rnd 14:** Ch 1, sc around post of hdc, ch 3, dc in next ch-3 sp, \*FPdc around next 2 tr, ch 3, sc in ch-2 sp, ch 3, FPdc around next 2 tr\*\*, sk next ch-3 sp, dc in next ch-3 sp, ch 3, sc in next ch-3 sp, ch 3, dc in next ch-3 sp; rep from \* around to last 2 ch-3 sps ending at \*\*, sk next ch-3 sp, dc in next ch-3 sp, ch 1, hdc in first sc, do not turn.

**Rnd 15:** Ch 1, sc around post of hdc, ch 3, sc in next ch-3 sp, \*FPtr around next 2 dc, [ch 3, sc in next ch-3 sp] twice, ch 3, FPtr around next 2 dc\*\*, sc in next ch-3 sp, ch 3, sc in next ch-3 sp; rep from \* around to first sc ending at \*\*, sl st to first sc, do not turn.

**Rnd 16:** Ch 2, \*FPdc2tog over next 2 tr, ch 5, sk next ch-3 sp, (sc, ch 3, sc) in next ch-3 sp, ch 5, FPdc2tog over next 2 tr; rep from \* around, sl st to first FPdc2tog, do not turn.

**Rnd 17:** Ch 3, dc in sp bet first and last FPdc2tog, \*sh in next ch-3 sp\*\*, (2 dc, ch 1, 2 dc) in sp bet next 2 FPdc2tog; rep from \* around to last FPdc2tog ending at \*\*, 2 dc in sp bet last and first FPdc2tog, ch 1, sl st to top of tch, do not turn.

**Rnd 18:** Ch 3, FPtr around tch, FPtr around next dc, \*ch 3, sk 2 ch-1 sps, [sc in next ch-1 sp, ch 3] 4 times, FPtr around next 2 dc\*\*, ch 2, FPtr around next 2 dc; rep from \* around to tch ending at \*\*, hdc in first tr, do not turn.

**Rnd 19:** Ch 1, sc around post of hdc, \*ch 3, FPdc around next 2 tr, sk next ch-3 sp, dc in next ch-3 sp, ch 3, sc in next ch-3 sp, ch 3, dc in next ch-3 sp, FPdc around next 2 tr, ch 3\*\*, sc in next ch-2 sp; rep from \* around to first sc ending at \*\*, sl st to first sc, do not turn.

**Rnd 20:** Sl st in next ch-sp, ch 1, sc in same ch-sp, \*ch 3, FPtr around next 2 dc, sc in next ch-3 sp, ch 3, sc in next ch-3 sp, FPtr around next 2 dc\*\*, [ch 3, sc in next ch-3 sp] twice; rep from \* around to last ch-3 sp ending at \*\*, ch 3, sc in last ch-3 sp, ch 1, hdc in first sc, do not turn.

**Rnd 21:** Ch 1, sc around post of hdc, \*ch 5, [FPdc2tog over next 2 tr] twice, ch 5\*\*, sk next ch-3 sp, (sc, ch 3, sc) in next ch-3 sp; rep from \* around to last ch-3 sp ending at \*\*, sk last ch-3 sp, sc in first ch-sp, ch 1, hdc in first sc, do not turn.

Rep Rnds 12-21 twice more.

## EDGING

**Rnd 42:** Ch 1, sc around post of hdc, \*5 sc in next ch-5 sp, 2 sc in sp bet next 2 FPdc2tog, 5 sc in next ch-5 sp\*\*, 2 sc in ch-3 sp; rep from \* around to first ch-sp ending at \*\*, sc in first ch-sp, sl st to first sc, do not turn.

**Rnd 43:** Ch 3 (counts as dc), dc in ea sc around, sl st to top of tch, do not turn.

**Rnd 44:** Ch 1, sc bet ea dc around, sl st to first sc, fasten off, weave in ends.

## FINISHING

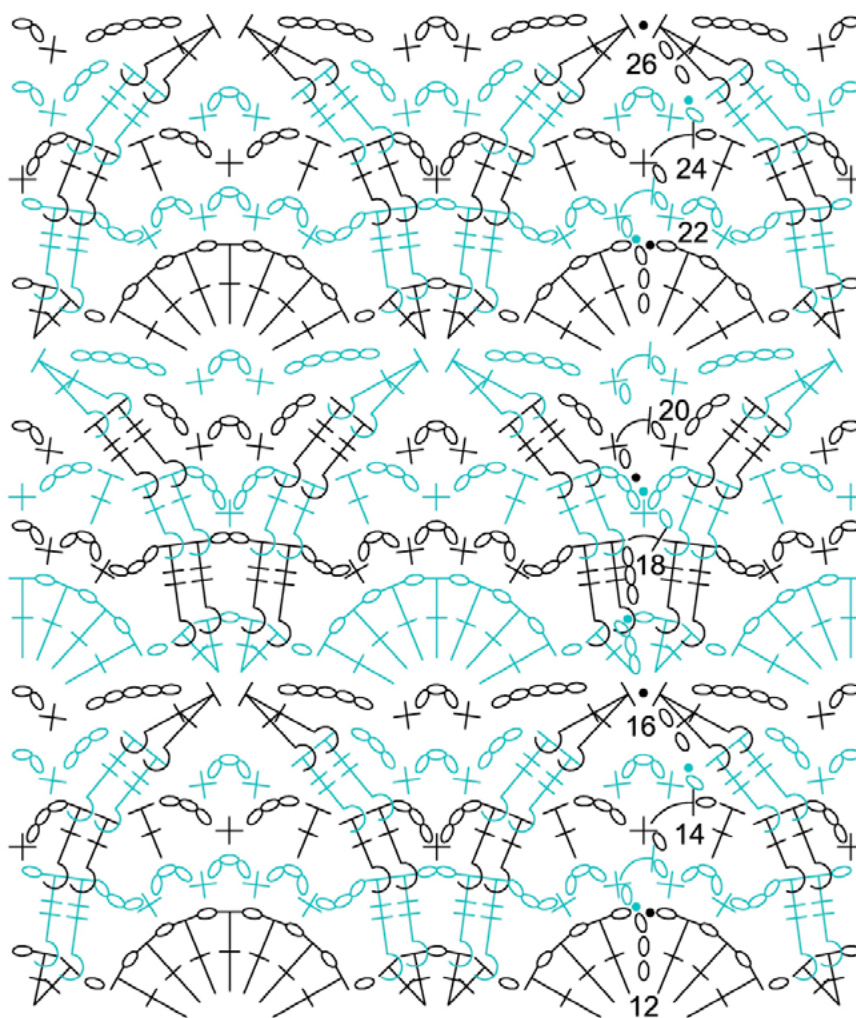
### Blocking

Pin body to schematic size. Spray with water and allow to dry.

**Collar Edging:** Join yarn to RS with sl st at collar edge.

**Rnd 1:** Ch 1, sc in ea sc around, sl st to first sc, do not turn.

**Rnd 2:** Ch 1, working from left to right, sl st in ea sc around, fasten off.



Lisbon Stitch Pattern

## ABBREVIATIONS & TERMS

### Knit

**beg:** beginning  
**CC:** contrasting color  
**cn:** cable needle  
**cont:** continue  
**dec:** decrease  
**dpn:** double pointed needles  
**est:** established  
**inc:** increase  
**K:** knit  
**KSP:** Knit 1, then slip stitch back to left hand needle, lift 2nd stitch on left hand needle back over returned stitch and replace returned stitch on RH needle (1 stitch decreased).  
**K2SP:** Knit 2 together, then slip stitch back to left hand needle, lift second stitch on left hand needle back over returned stitch and replace returned stitch on right hand needle (2 stitches decreased).  
**LH:** left hand  
**lp(s):** loop(s)  
**LT2 (Left Twist):** Skip 1 stitch, knit second stitch through back loop, then knit both stitches together through back loop  
**MC:** main color  
**M1k:** Pick up horizontal strand between stitch just worked and next stitch, place on left hand needle, knit this stitch (1 stitch increased).  
**M1p:** Pick up horizontal strand between stitch just worked and next stitch, place on left hand needle, purl this stitch (1 stitch increased).  
**p:** purl  
**pat(s):** pattern(s)  
**pm:** place marker  
**psso:** pass slip stitch over knit stitch  
**p2sso:** pass 2 slip stitches over knit stitch  
**rem:** remaining  
**rep:** repeat  
**RH:** right hand  
**rnd(s):** round(s)  
**RS:** right side  
**RT2 (Right Twist):** Knit 2 stitches together, leaving them on the left hand needle, then knit the first stitch again slipping both stitches to the right hand needle.  
**SKP:** slip 1, knit 1, pass slip stitch over  
**sl:** slip  
**SSK:** Slip 2 stitches knitwise, insert point of left hand needle through fronts of these 2 stitches and knit 2 together.  
**st(s):** stitch(es)

**TBL:** through back loop(s)  
**tog:** together  
**WS:** wrong side  
**wyib:** with yarn in back  
**wyif:** with yarn in front  
**yo:** yarn over  
**end on WS:** end having just completed a Wrong Side row.  
**end on RS:** end having just completed a Right Side row  
**STOCKINETTE ST (St st):** Knit 1 row, purl 1 row alternately when working on straight needles. The knit side is the right side of work. Knit EVERY round when working in the round on a circular needle. Reverse **St st (Rev St st):** Purl 1 row, knit 1 row alternately when working on straight needles. The purl side is the right side of the work. Purl EVERY round when working in the round on a circular needle.  
**GARTER ST:** Knit EVERY row when working on straight needles. Knit 1 round, purl 1 round when working on a circular needle.

### Crochet

**bphdc (back post half double crochet):** Yarn over, insert hook from back to front to back around post of half double crochet one row below, yarn over, draw up a loop, yarn over, draw through all 3 loops on hook (this is worked on even # or wrong side rows).  
**bptr (back post triple):** Yarn over twice, insert hook from back to front around post of stitch on previous row and pull up a loop, (yarn over and draw through 2 loops on hook) 3 times.  
**ch:** chain  
**dc:** double crochet  
**fphdc (front post half double crochet):** Yarn over, insert hook from front to back to front around post of half double crochet one row below, yarn over, draw up a loop, yarn over, draw through all 3 loops on hook (this is worked on odd # or right side rows)  
**fptr (front post triple):** Yarn over twice, insert hook from front to back around post of stitch on previous row and pull up a loop, (yarn over and draw through 2 loops on hook) 3 times.  
**hdc:** half double crochet  
**hdctbl:** Half double crochet worked in the back loop  
**hdctfl:** Half double crochet worked in the front loop  
**sl st:** slip stitch  
**sp:** space  
**tr:** treble