

Lilla

Berroco - Lilla

Designed by Brenda York



skill level: Intermediate
finished measurements
Approximately 46" across top edge
x 20" down center back

materials

3 hanks **BERROCO VINTAGE** (100 grs), #5136 Bird's Egg
29" length circular knitting needle,
size 9 (5.50 mm) OR SIZE TO OBTAIN
GAUGE
Straight knitting needles, size 9
(5.50 mm)
6 st markers

gauge

18 sts and 23 rows = 4" in St st
TO SAVE TIME, TAKE TIME TO CHECK
GAUGE

Vintage®

Find this Yarn 

 **BERROCO®**
www.berroco.com

Love Berroco patterns?
Sign up for our **KnitBits®** newsletter.



NOTE: We recommend using yarns called for in our instructions. Every effort has been made to ensure that directions contained in this book are accurate and complete, however errors do occur. We cannot be responsible for variance of individual knitters, human or typographical errors.

All pattern PDFs are updated when corrections are made. In the event of finding an error, please make sure you've downloaded the most recent version.

SHAWL

Garter Stitch Tab: With straight needles, using provisional cast-on, cast on 3 sts. Knit 10 rows (5 Garter ridges). Using circular needle, k3, turn piece 90 degrees to the left, pick up and knit 1 st in each Garter ridge along side of tab (5 sts), turn piece 90 degrees to the left again, unravel provisional cast on, slipping sts to needle, then knit these sts – 11 sts.

Set-Up Row (WS): K3, pm, (p1, pm) 5 times, k3 – 6 markers on needle.

Next Row (RS): K3, * sm, yo, k1, yo, sm, k1, rep from * once more, sm, yo, k1, yo, sm, k3 – 17 sts.

Next Row and all WS rows: K3, sm, purl to last marker, sm, k3.

Inc Row (RS): K3, * sm, yo, knit to next marker, yo, sm, k1, rep from * once more, sm, yo, knit to last marker, yo, sm, k3 – 6 sts inc'd.

Rep the last 2 rows 47 times more, end with a RS row – 305 sts. Knit 1 row on WS. Break off yarn, leaving an 8" long end and leaving sts on circular needle.

Edging: With straight needles, using long-tail method, cast on 13 sts. Knit 1 row on WS.

Set-Up Row 1 (RS): K1, yo, k2tog, k6, yo, k2tog, k1, sl last st to circular needle and knit this st and first st on circular needle tog TBL. Turn.

Set-Up Row 2: Using circular needle, sl 1 WYIF (with yarn in front), then knit to end – all sts are now on circular needle. From here, you will be working with 1 straight needle and the circular needle. Straight needle will be RH needle on RS rows and LH needle on WS rows.

Row 3 (RS): K1, yo, k2, k2tog, (yo) twice, k2tog, k2, yo, k2tog, k1, k2togTBL, turn.

Row 4: Sl 1 WYIF, k7, yo, p2tog, k4.

Row 5: K1, yo, k1, k2tog, (yo) twice, (k2tog) twice, (yo) twice, k2tog, yo, k2tog, k1, k2tog TBL, turn.

Row 6: Sl 1 WYIF, k5, yo, p2tog, k2, yo, p2tog, k3.

Row 7: K1, yo, k4, k2tog, (yo) twice, k2tog, k2, yo, k2tog, k1, k2togTBL, turn.



Row 8: Sl 1 WYIF, k7, yo, p2tog, k6.

Row 9: K1, yo, k3tog, k2tog, (yo) twice, (k2tog) twice, (yo) twice, k2tog, yo, k2tog, k1, k2togTBL, turn.

Row 10: Sl 1 WYIF, k5, yo, p2tog, k2, yo, p2tog, k3.

Row 11: K1, yo, k3tog, k1, k2tog, (yo) twice, k2tog, k2, yo, k2tog, k1, k2togTBL, turn.

Row 12: Sl 1 WYIF, k7, yo, p2tog, k4.

Row 13: K1, yo, k3tog, k6, yo, k2tog, k1, k2togTBL, turn.

Row 14: Sl 1 WYIF, knit to end.

Rep Rows 1 – 14 until all 305 sts originally on circular needle have been decreased, leaving only Border sts, end with a WS row. Bind off knitwise.

FINISHING

Weave in all ends and block as desired.

KEY TO CHART

- | | |
|---|--------------------------|
|  | knit on RS; purl on WS |
|  | purl on RS; knit on WS |
|  | yo |
|  | k3tog |
|  | sl 1 WYIF |
|  | k2togTBL |
|  | k2tog on RS, p2tog on WS |

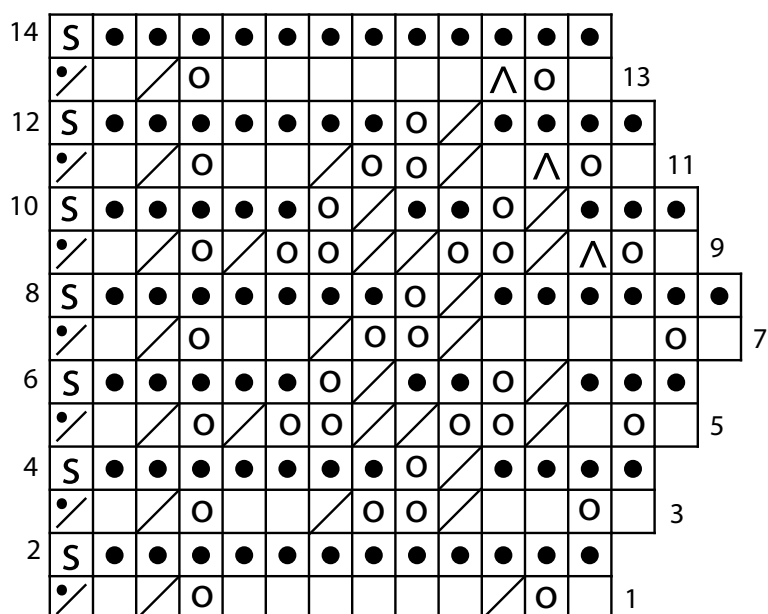
CHART NOTES

On RS, work from right to left.

On WS, work from left to right.

This joins border to shawl as you work.

BORDER CHART



ABBREVIATIONS & TERMS

beg: beginning
CC: contrasting color
cdd (centered double decrease): Slip 2 together (as if to k2tog), knit 1, pass the 2 slipped stitches over.
cn: cable needle
cont: continue
dec: decrease
dpn: double pointed needles
est: established
inc: increase
K: knit
k tbl: knit through the back loop(s)
k2tog: Knit 2 stitches together
k3tog: Knit 3 stitches together
LH: left hand
MC: main color
M1: Pick up horizontal strand between stitch just worked and next stitch from front to back, place on left hand needle, knit this stitch through the back (1 stitch increased).
M1L: Work as for M1.
M1p: Pick up horizontal strand between stitch just worked and next stitch from front to back, place on left hand needle, purl this stitch through the back (1 stitch increased).
M1pL: Work as for M1p.
M1pR: Pick up horizontal strand between stitch just worked and next stitch from back to front, place on left hand needle, purl this stitch through the front (1 stitch increased).
M1R: Pick up horizontal strand between stitch just worked and next stitch from back to front, place on left hand needle, knit this stitch through the front (1 stitch increased).
p: purl
p tbl: purl through the back loop(s)
pat(s): pattern(s)
pm: place marker
pssso: pass slip stitch over knit stitch
p2tog: purl 2 stitches together
p2sso: pass 2 slip stitches over knit stitch
p3tog: purl 3 stitches together
rem: remaining
rep: repeat
RH: right hand
rnd(s): round(s)
RS: right side
sl: slip

sm: slip marker
SSK: Slip 2 stitches knitwise, insert point of left hand needle through fronts of these 2 stitches and knit 2 together.
SSP: Slip 2 stitches knitwise, transfer these 2 stitches back to left hand needle, purl 2 together through the back loops.
st(s): stitch(es)
TBL: through back loop(s)
tog: together
w&t: wrap and turn, a method of concealing a hole created in short row shaping. With yarn held in back, slip stitch to be wrapped purlwise, then bring yarn between needles to the front. Slip that same stitch back to the left needle, then bring the yarn to the back again. Turn your work. Unless otherwise indicated, each time you come to a wrapped stitch when working subsequent rows, slip the wrap back over stitch and onto needle, then work the wrap together with its accompanying stitch.
WS: wrong side
wyib: with yarn in back
wyif: with yarn in front
yo: yarn over
end on WS: end having just completed a Wrong Side row.
end on RS: end having just completed a Right Side row
Stockinette stitch (St st): Knit 1 row, purl 1 row alternately when working on straight needles. The knit side is the right side of work. Knit EVERY round when working in the round on a circular needle.
Reverse St st (Rev St st): Purl 1 row, knit 1 row alternately when working on straight needles. The purl side is the right side of the work. Purl EVERY round when working in the round on a circular needle.
GARTER ST: Knit EVERY row when working on straight needles. Knit 1 round, purl 1 round when working on a circular needle.