

Love Berroco patterns? Sign up for our [KnitBits®](#) newsletter.

skill level: Intermediate
Shown in size Small

sizes

Directions are for women's size X-Small. Changes for sizes Small, Medium, Large and X-Large are in parentheses.

finished measurements

Bust (closed) – 38(45-52-59-66)“
Length – 26(26-27-28-29)“

Note: This garment is designed to be quite oversized. The fronts have a large overlap so the fit is very forgiving. The model in the photo is wearing the sweater with approximately 10“ of ease.

materials

7(8-9-10-11-13) hanks [BERROCO WEEKEND](#) (100 grs), #5909 Lavender
29“ length circular knitting needles, sizes 6 (4.00 mm) and 7 (4.50 mm)
OR SIZE TO OBTAIN GAUGE
1 st marker

gauge

20 sts and 28 rows = 4“ in charted pat on size 7 (4.50 mm) needles
18 sts and 26 rows = 4“ in St st on size 7 (4.50 mm) needles
TO SAVE TIME, TAKE TIME TO CHECK GAUGE

Free Pattern



Berroco Weekend®



Find this yarn at your LYS

Our supercharged store locator goes above and beyond the ordinary. Innovatively linked to our inventory system, search for a yarn in your area and you'll pinpoint LYS's that have a proven history of ordering that product. A handy listing of all of the Berroco yarns the store carries and easy access to driving directions are also right at your finger tips. *Find all yarns now.*



Don't forget to connect with us on social media!



NOTE: We recommend using yarns called for in our instructions. Every effort has been made to ensure that directions contained in this book are accurate and complete, however errors do occur. We cannot be responsible for variance of individual knitters, human or typographical errors.

All pattern PDFs are updated when corrections are made. In the event of finding an error, please make sure you've downloaded the most recent version.

BACK

With smaller needles, cast on 95(113-131-149-167) sts. Knit 6 rows. Change to larger needles and work even, following chart, until piece measures 19" from beg, end on WS. Mark beg and end of last row for beg of armholes. Work even until armholes measure 7(7-8-9-10)", end on WS. Bind off. Mark center 41 sts for back neck.

LEFT FRONT

With smaller needles, cast on 62(80-98-116-134) sts.
Row 1 (RS): K to last 3 sts, place marker, p1, k2.
Row 2: P2, k1, sl marker, k to end. Work even in pat as established for 4 more rows (6 rows total), end on WS. Change to larger needles. Keeping 3 sts at front edge (after marker) in pat as established and following chart over remaining sts, work even until piece measures 19" from beg, end on WS. Mark end of last row for beg of armhole. Work even until armhole measures 7(7-8-9-10)", end on WS. Bind off. With RS facing, place marker after first 27(36-45-54-63) sts (these are shoulder sts).

RIGHT FRONT

With smaller needles, cast on 62(80-98-116-134) sts.
Row 1 (RS): K2, p1, place marker, k to end.
Row 2: K to marker, sl marker, k1, p2. Work even in pat as established for 4 more rows, end on WS. Change to larger needles. Keeping 3 sts at front edge (before marker) in pat as established and following chart over remaining sts, work even until piece measures 19" from beg, end on WS. Mark beg of last row for beg of armhole. Work even until armhole measures 7(7-8-9-10)", end on WS. Bind



off. With RS facing, place marker before last 27(36-45-54-63) sts (these are shoulder sts).

SLEEVES

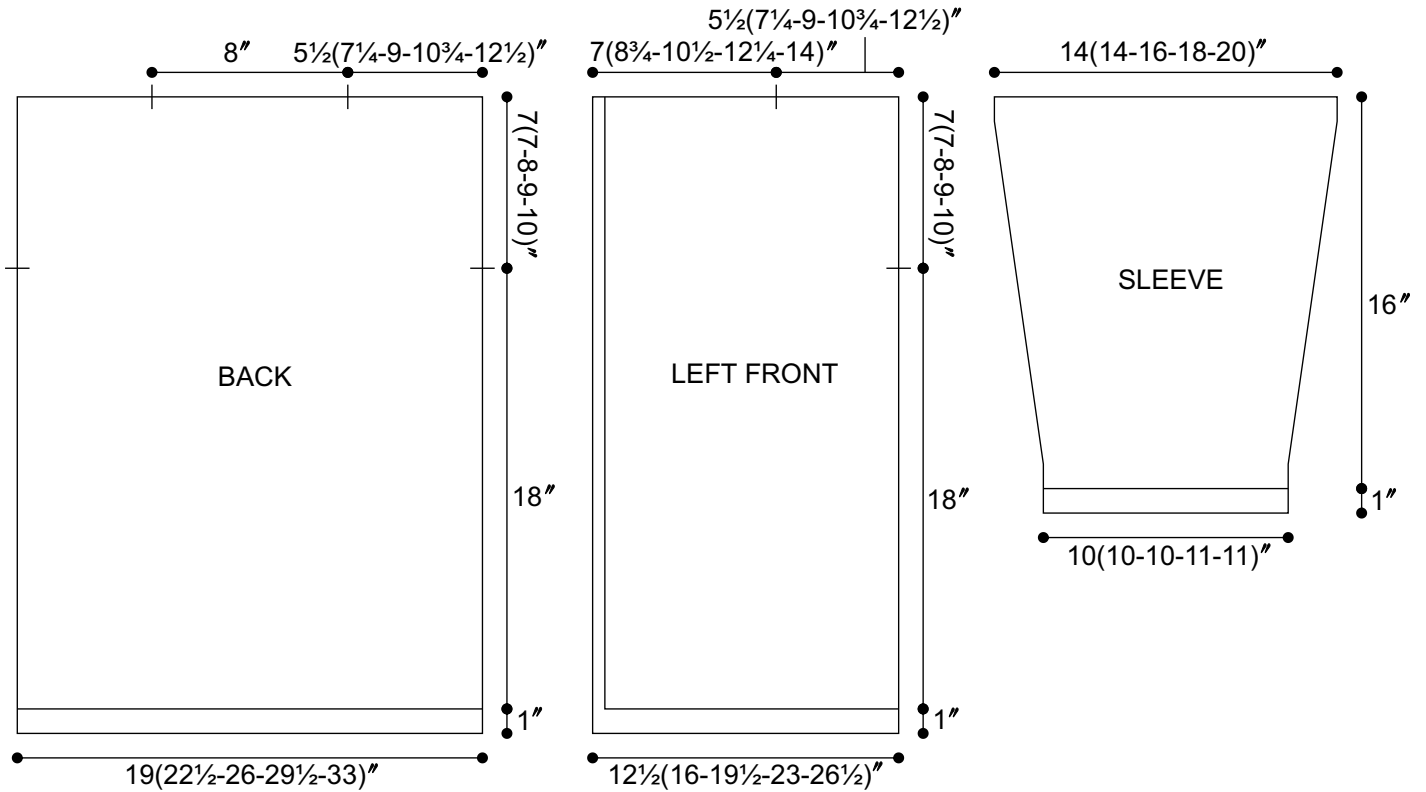
With smaller needles, cast on 45(45-45-49-49) sts. Knit 6 rows. Change to larger needles and work even in St st until sleeve measures 2" from beg, end on WS.

Inc Row (RS): K1, M1L, k to last st, M1R, k1 – 2 sts inc'd. Rep Inc Row every 1¾(1¾-1¾-¾)" 8(8-12-15-19) times more – 63(63-71-81-89) sts. Work even until sleeve measures 17" from beg, end on WS. Bind off.

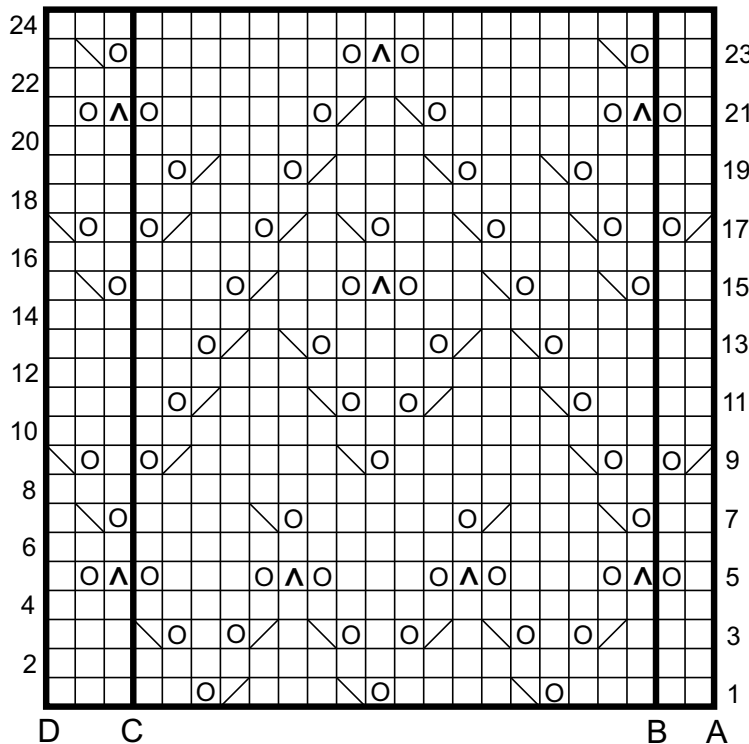
FINISHING

Sew shoulder seams.

Neckband: With RS facing, using smaller needles, beg at right front edge, pick up and k32(39-47-55-63) sts across bound-off edge of right front, 36 sts across back neck edge, then 32(39-47-55-63) sts across bound-off edge of left front – 100(114-130-146-162) sts. Knit 5 rows. Bind off. Sew on sleeves between markers. Sew side and sleeve seams.



LAVANYA CHART



KEY TO CHART

- K on RS, p on WS
- Yo
- ▤ SSK
- ▥ K2 tog
- ▧ SI 1, k2tog, pss0 - 2 sts dec'd.

CHART NOTES

On RS rows, beg at A, work to C, rep between B and C, end at D.
 On WS rows, beg at D, work to B, rep between C and B, end at A.

ABBREVIATIONS & TERMS

Knit

beg: beginning
CC: contrasting color
CDD (centered double decrease): Slip 2 together, knit 1, pass the 2 slipped stitches over.
cn: cable needle
cont: continue
dec: decrease
dpn: double pointed needles
est: established
inc: increase
K: knit
k tbl: knit through the back loop(s)
k2tog: Knit 2 stitches together
k3tog: Knit 3 stitches together
LH: left hand
MC: main color
M1: Pick up horizontal strand between stitch just worked and next stitch from front to back, place on left hand needle, knit this stitch through the back (1 stitch increased).
M1L: Work as for M1.
M1p: Pick up horizontal strand between stitch just worked and next stitch from front to back, place on left hand needle, purl this stitch through the back (1 stitch increased).
M1pL: Work as for M1p.
M1pR: Pick up horizontal strand between stitch just worked and next stitch from back to front, place on left hand needle, purl this stitch through the front (1 stitch increased).
M1R: Pick up horizontal strand between stitch just worked and next stitch from back to front, place on left hand needle, knit this stitch through the front (1 stitch increased).
p: purl
p tbl: purl through the back loop(s)
pat(s): pattern(s)
pm: place marker
pssso: pass slip stitch over knit stitch
p2tog: purl 2 stitches together
p2sso: pass 2 slip stitches over knit stitch
p3tog: purl 3 stitches together
rem: remaining
rep: repeat
RH: right hand
rnd(s): round(s)
RS: right side
sl: slip
sm: slip marker

SSK: Slip 2 stitches knitwise, insert point of left hand needle through fronts of these 2 stitches and knit 2 together.

SSP: Slip 2 stitches knitwise, transfer these 2 stitches back to left hand needle, purl 2 together through the back loops.

st(s): stitch(es)

TBL: through back loop(s)

tog: together

WS: wrong side

wyib: with yarn in back

wyif: with yarn in front

yo: yarn over

end on WS: end having just completed a Wrong Side row.

end on RS: end having just completed a Right Side row

STOCKINETTE ST (St st): Knit 1 row, purl 1 row alternately when working on straight needles. The knit side is the right side of work. Knit EVERY round when working in the round on a circular needle.

Reverse St st (Rev St st): Purl 1 row, knit 1 row alternately when working on straight needles. The purl side is the right side of the work. Purl EVERY round when working in the round on a circular needle.

GARTER ST: Knit EVERY row when working on straight needles. Knit 1 round, purl 1 round when working on a circular needle.

Crochet

ch: chain

dc: double crochet

hdc: half double crochet

sc: single crochet

sl st: slip stitch

sp: space

tr: treble