

Love Berroco patterns? Sign up for our **KnitBits®** newsletter.

**skill level:** Intermediate

Shown in size 4

**sizes**

Directions are for children's size 2. Changes for sizes 4, 6, 8 and 10 are in parentheses.

To Fit Chest Size: 20(21-22-23-24)"

**finished measurements**

Chest – 24(25-26-27-28)"

Length – 14½(15½-16-17-17½)"

Note: This garment was designed with approximately 4" of ease. Please take this into consideration when selecting your size.

**materials**

1(2-2-2-2) balls **BERROCO COMFORT** (100 grs), #9725 Dutch Teal (MC) and 1 ball each #9717 Raspberry Coulis (CC1) and #9721 Sprig (CC2)  
Straight knitting needles, size 8 (5.00 mm) OR SIZE TO OBTAIN GAUGE

1 set (4) double pointed knitting needles (dpns), size 7 (3.50 mm)  
Crochet hook, size 5.00 mm (H)

2 st holders

6 st markers

**Gauge**

20 sts and 26 rows = 4" in St st on larger needles

TO SAVE TIME, TAKE TIME TO CHECK GAUGE

**Free Pattern**



*Berroco Comfort®*



*Find this yarn  
at your LYS*

Our supercharged store locator goes above and beyond the ordinary. Innovatively linked to our inventory system, search for a yarn in your area and you'll pinpoint LYS's that have a proven history of ordering that product. A handy listing of all of the Berroco yarns the store carries and easy access to driving directions are also right at your finger tips. *Find all yarns now.*

Don't forget to connect with us on social media!



**NOTE:** We recommend using yarns called for in our instructions. Every effort has been made to ensure that directions contained in this book are accurate and complete, however errors do occur. We cannot be responsible for variance of individual knitters, human or typographical errors.

All pattern PDFs are updated when corrections are made. In the event of finding an error, please make sure you've downloaded the most recent version.

## NOTE

The sleeves and yoke of this garment are worked sideways from right sleeve cuff to left sleeve cuff. The back and front are then picked up along side edges of yoke and worked down.

## SLEEVES/YOKE

**Right Sleeve:** With straight needles, using CC1, cast on 30(30-34-34-34) sts. Knit 1 row on WS. Change to MC and knit 4 rows, end on WS. Work even in St st for 2 rows, end on WS.

**Inc Row (RS):** K1, M1L, k to last st, M1R, k1 – 2 sts inc'd. Rep Inc Row every  $\frac{3}{4}$ ( $\frac{1}{2}$ - $\frac{3}{4}$ - $\frac{3}{4}$ - $\frac{3}{4}$ )" 9(12-10-12-12) times more – 50(56-56-60-60) sts. Work even until sleeve measures 9(10-11-12-13)" from beg, end on WS. Mark beg and end of last row for beg of yoke.

**Yoke:** Work even until piece measures  $3\frac{1}{2}$ ( $3\frac{3}{4}$ - $3\frac{3}{4}$ -4-4)" above markers, end on WS.

**Shape Neck: Next Row (RS):** K20(23-23-25-25), then sl these sts to holder for front; join another ball of yarn and bind off 5 sts, k to end – 25(28-28-30-30) sts for back.

**Back:** Work even until piece measures 5(5-5 $\frac{1}{2}$ -5 $\frac{1}{2}$ -6)" above sts on holder, end on WS. Break off yarn and sl sts to second holder.

**Front:** With WS facing, sl 20(23-23-25-25) sts from first holder to straight needle. Join MC in first st. Dec 1 st at beg of the next WS row, then at same edge 4 times more – 15(18-18-20-20) sts. Work even until piece measures  $3\frac{1}{2}$ ( $3\frac{1}{2}$ -4-4-4 $\frac{1}{2}$ )" above sts bound off at beg of neck shaping, end on RS. Inc 1 st at beg of the next row, then at same edge 4 times more – 20(23-23-25-25) sts.

**Joining Row (RS):** K20(23-23-25-25), cast on 5 sts using cable cast-on method, sl 25(28-28-30-30) sts



of back to straight needle and k across these sts with same strand of yarn – 50(56-56-60-60) sts. Beg with a p row, work even in St st until piece measures  $3\frac{1}{2}$ ( $3\frac{3}{4}$ - $3\frac{3}{4}$ -4-4)" above joining row, end on WS.

Mark beg and end of last row for beg of left sleeve.

**Left Sleeve:** Work even until piece measures 1" above markers, end on WS.

**Dec Row (RS):** K1, k2 tog, k to last 3 sts, SSK, k1 – 2 sts dec'd. Rep Dec Row every  $\frac{3}{4}$ ( $\frac{1}{2}$ - $\frac{3}{4}$ - $\frac{3}{4}$ - $\frac{3}{4}$ )" 9(12-10-12-12) times more – 30(30-34-34-34) sts. Work even until sleeve measures 8(9-10-11-12)" above markers, end on WS. Knit 4 rows. Change to CC1 and knit 1 row, purl 1 row. Bind off.

## BACK

With RS facing, using straight needles and CC1, pick up and k61(63-65-69-71) sts along left side edge of sleeves/yoke between sleeve markers. Knit 3 rows. (2 Garter ridges). Knit 1 row, purl 1 row.

**Establish Charts: Row 1 (RS):** K7(8-8-9-10), pm, work Row 1 of Chart 1 over 11 sts, pm, k7(7-8-9-9), pm, work Row 1 of Chart 2 over 11 sts, pm, k7(7-8-9-9), pm, work Row 1 of Chart 1 over 11 sts, pm, k to end.

**Row 2:** P to first marker, work Row 2 of Chart 1 to next marker, p to next marker, work Row 2 of Chart 2 to next marker, p to next marker, work Row 2 of Chart 1 to last marker, p to end. Work even in pat as established until 13 rows of charts have been completed, end on RS. Purl 1 row, knit 4 rows (2 Garter ridges), end on WS. Change to CC2 and work even in St st until piece measures 8½(9-9½-10-10½)'' above yoke, end on WS. Knit 4 rows. Change to MC and knit 2 rows, end on WS. Bind off.

## FRONT

Work as for back.

## FINISHING

Sew side and sleeve seams, matching colors.

**Neckband:** With RS facing, using dpns and MC, beg at left side of neck, pick up and k62(62-66-66-

70) sts around entire neck edge. Divide sts onto 3 needles, mark for beg of rnd and carry marker up. Purl 1 rnd, knit 1 rnd, purl 1 rnd. Change to CC2 and knit 1 rnd, purl 1 rnd. Bind off loosely knitwise. Using crochet hook and CC1, work 1 row of chain st along base of neckband just below picked-up sts.

**Twisted Cord (optional):** Cut one 48'' long strand each of MC, CC1 and CC2. Tie 3 strands together at both ends. Slip one knot over a hook and begin twisting. Twist until cord is so tightly twisted that it can't twist any further and starts to double back on itself. Putting one finger in center, allow the 2 ends to twist together, then tie the 2 knotted ends together. Knot the other end, trimming strands at each end to 1''. Tie cord in a bow and sew to left front of neckband as in photo.

CHART 1

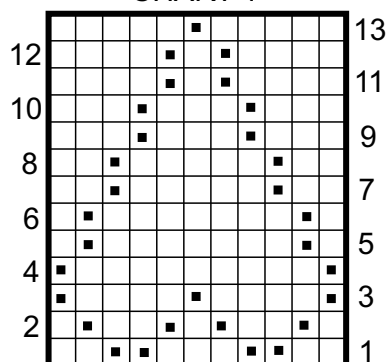
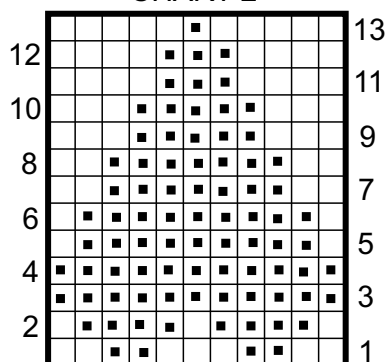


CHART 2

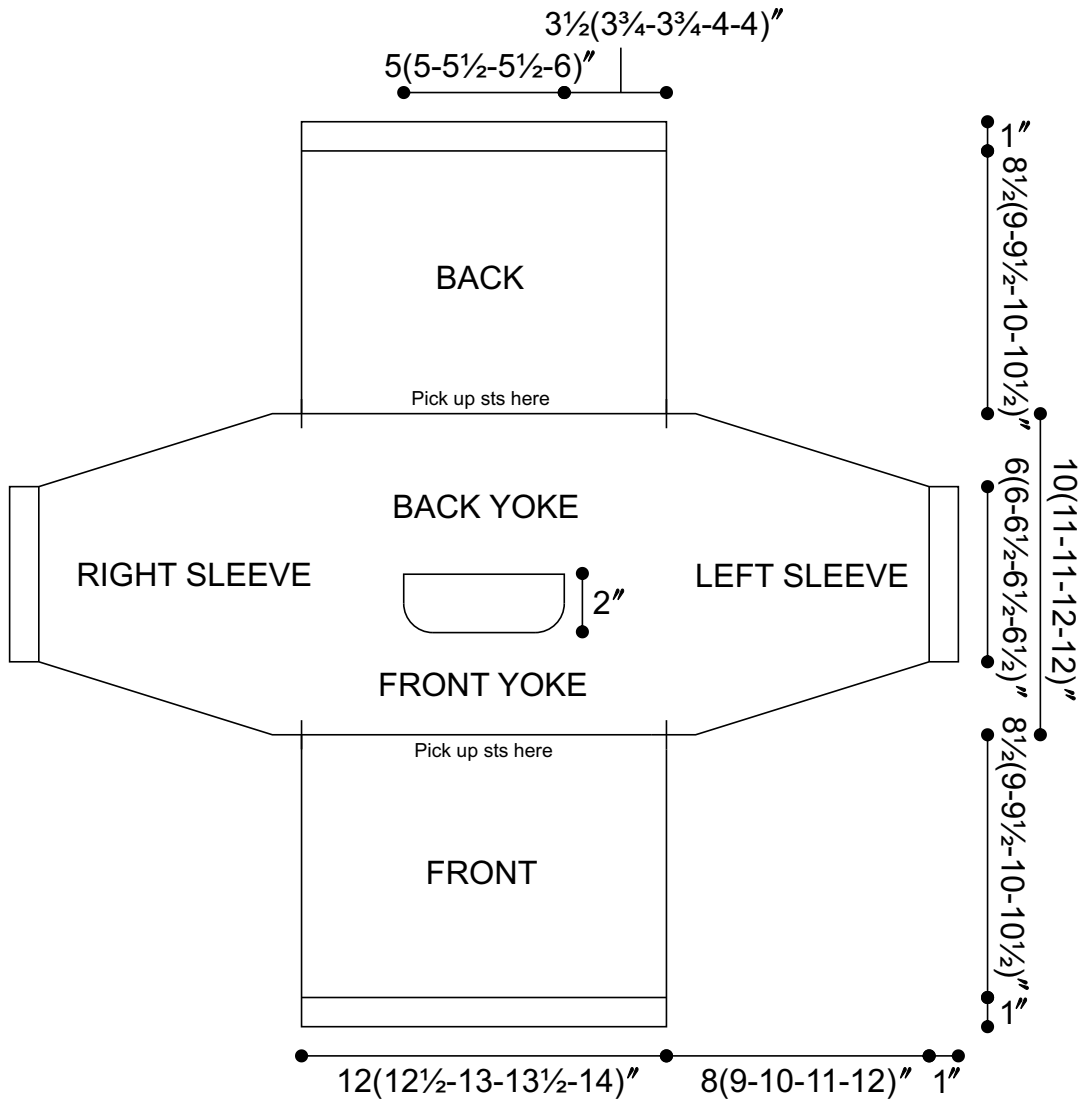


## KEY TO CHARTS

- K on RS, p on WS
- P on RS, k on WS

## CHART NOTES

On RS, work from right to left. On WS, work from left to right.



## ABBREVIATIONS & TERMS

### Knit

---

**beg:** beginning

**CC:** contrasting color

**CDD (centered double decrease):** Slip 2 together, knit 1, pass the 2 slipped stitches over.

**cn:** cable needle

**cont:** continue

**dec:** decrease

**dpn:** double pointed needles

**est:** established

**inc:** increase

**K:** knit

**k tbl:** knit through the back loop(s)

**k2tog:** Knit 2 stitches together

**k3tog:** Knit 3 stitches together

**LH:** left hand

**MC:** main color

**M1:** Pick up horizontal strand between stitch just worked and next stitch from front to back, place on left hand needle, knit this stitch through the back (1 stitch increased).

**M1L:** Work as for M1.

**M1p:** Pick up horizontal strand between stitch just worked and next stitch from front to back, place on left hand needle, purl this stitch through the back (1 stitch increased).

**M1pL:** Work as for M1p.

**M1pR:** Pick up horizontal strand between stitch just worked and next stitch from back to front, place on left hand needle, purl this stitch through the front (1 stitch increased).

**M1R:** Pick up horizontal strand between stitch just worked and next stitch from back to front, place on left hand needle, knit this stitch through the front (1 stitch increased).

**p:** purl

**p tbl:** purl through the back loop(s)

**pat(s):** pattern(s)

**pm:** place marker

**pssso:** pass slip stitch over knit stitch

**p2tog:** purl 2 stitches together

**p2sso:** pass 2 slip stitches over knit stitch

**p3tog:** purl 3 stitches together

**rem:** remaining

**rep:** repeat

**RH:** right hand

**rnd(s):** round(s)

**RS:** right side

**sl:** slip

**sm:** slip marker

**SSK:** Slip 2 stitches knitwise, insert point of left hand needle through fronts of these 2 stitches and knit 2 together.

**SSP:** Slip 2 stitches knitwise, transfer these 2 stitches back to left hand needle, purl 2 together through the back loops.

**st(s):** stitch(es)

**TBL:** through back loop(s)

**tog:** together

**WS:** wrong side

**wyib:** with yarn in back

**wyif:** with yarn in front

**yo:** yarn over

**end on WS:** end having just completed a Wrong Side row.

**end on RS:** end having just completed a Right Side row

**STOCKINETTE ST (St st):** Knit 1 row, purl 1 row alternately when working on straight needles. The knit side is the right side of work. Knit EVERY round when working in the round on a circular needle.

**Reverse St st (Rev St st):** Purl 1 row, knit 1 row alternately when working on straight needles. The purl side is the right side of the work. Purl EVERY round when working in the round on a circular needle.

**GARTER ST:** Knit EVERY row when working on straight needles. Knit 1 round, purl 1 round when working on a circular needle.

### Crochet

---

**ch:** chain

**dc:** double crochet

**hdc:** half double crochet

**sc:** single crochet

**sl st:** slip stitch

**sp:** space

**tr:** treble