

# Dory

Designed by Amy Christoffers



**skill level:** Intermediate  
Shown in size 36"

**finished measurements**

Bust (closed) – 33(36-39-42-45-48-51-54)"

Length – 22½(23-23½-23½-24-24½-25-25½)"

**Note:** This garment was designed with approximately 2 – 4" of ease. Please take this into consideration when selecting your size.

**materials**

9(10-10-11-12-13-14-16) balls

**BERROCO ELBA** (50 grs), #7707

Damselfish

Straight knitting needles, sizes 6

(4.00 mm) and 7 (4.50 mm) OR SIZE

TO OBTAIN GAUGE

Seven 1" buttons

**gauge**

20 sts and 28 rows = 4" in St st on larger needles

TO SAVE TIME, TAKE TIME TO CHECK GAUGE

*Berroco Elba™*

Find this Yarn 

 **BERROCO®**  
www.berroco.com

Love Berroco patterns?  
Sign up for our **KnitBits®** newsletter.



**NOTE:** We recommend using yarns called for in our instructions. Every effort has been made to ensure that directions contained in this book are accurate and complete, however errors do occur. We cannot be responsible for variance of individual knitters, human or typographical errors.

All pattern PDFs are updated when corrections are made. In the event of finding an error, please make sure you've downloaded the most recent version.

## BACK

With smaller needles, cast on 83(91-99-105-113-121-129-135) sts.

**Ribbing: Row 1 (RS):** K1, \* p1, k1, rep from \* across.

**Row 2:** P1, \* k1, p1, rep from \* across. Rep these 2 rows until piece measures 2" from beg, end on WS. Change to larger needles and St st and work even until piece measures 14" from beg, end on WS.

**Shape Armholes:** Bind off 4(4-5-6-7-7-8-8) sts at beg of the next 2 rows – 75(83-89-93-99-107-113-119) sts.

**Dec Row (RS):** K1, k2tog, knit to last 3 sts, SSK, k1 – 2 sts dec'd. Rep Dec Row every RS row 4(4-5-5-6-6-7-8) times more – 65(73-77-81-85-93-97-101) sts. Work even until armholes measure 2½(3-3½-3½-4-4½-5-5½)", end on WS. Begin working from chart. Work even following chart until armholes measure 7½(8-8½-8½-9-9½-10-10½)", end on WS.

**Shape Shoulders:** Bind off 4(6-6-6-8-8-10-10) sts at beg of the next 2 rows, then 4(5-6-7-7-9-9-10) sts at beg of the next 4 rows. Bind off remaining 41 sts for back neck.

## LEFT FRONT

With smaller needles, cast on 39(43-45-49-55-59-61-67) sts. Work in ribbing as for back for 2", end on WS, dec 1(1-0-0-0-0-0-1) sts at end of last row – 38(42-44-49-55-59-61-66) sts. Change to larger needles and St st and work even until piece measures 14" from beg, end on WS.

**Shape Armhole: Next Row (RS):** Bind off 4(4-5-6-7-7-8-8) sts, knit to end – 34(38-39-43-48-52-53-58) sts. Purl 1 row, end on WS.

**Dec Row (RS):** K1, k2tog, knit to end – 1 st dec'd. Rep Dec Row every RS row 4(4-4-5-6-6-7-8) times more – 29(33-33-37-41-45-45-49) sts. Work even until armhole measures 2½(3-3½-3½-4-4½-5-5½)", end on WS. Begin working from chart. Work even, following chart, until armhole measures 3½(4-4½-



4½-5-5½-6-6½)", end on RS.

**Shape Neck: Next Row (WS):** Bind off 7(7-5-7-9-9-7-9) sts, follow chart to end – 22(26-28-30-32-36-38-40) sts.

**Dec Row (RS):** Follow chart to last 2 sts, k2tog – st dec'd. Continue to follow chart and AT THE SAME TIME, rep dec row every RS row 9 times more – 12(16-18-20-22-26-28-30) sts. Work even until armhole measures 7½(8-8½-8½-9-9½-10-10½)", end on WS. Bind off 4(6-6-6-8-8-10-10) sts at armhole edge once, then 4(5-6-7-7-9-9-10) sts twice for shoulder.

## RIGHT FRONT

Work as for left front until piece measures 14" from beg, end on RS – 38(42-44-49-55-59-61-66) sts.

**Shape Armhole: Next Row (WS):** Bind off 4(4-5-6-7-7-8-8) sts, purl to end – 34(38-39-43-48-52-53-58) sts.

**Dec Row (RS):** Knit to last 3 sts, SSK, k1 – 1 st dec'd. Rep Dec Row every RS row 4(4-4-5-6-6-7-8) times more – 29(33-33-37-41-45-45-49) sts. Work even until armhole measures 2½(3-3½-3½-4-4½-5-5½)", end on WS. Being working from chart. Work even, following chart, until armhole measures 3½(4-4½-4½-5-5½-6-6½)", end on WS.



**Shape Neck: Next Row (RS):** Bind off 7(7-5-7-9-9-7-9) sts, follow chart to end – 22(26-28-30-32-36-38-40) sts. Work 1 row even, following chart, end on WS.

**Dec Row (RS):** K2tog, follow chart to end – 1 st dec'd. Continue to follow chart and AT THE SAME TIME, rep dec row every RS row 9 times more – 12(16-18-20-22-26-28-30) sts. Work even until armhole measures 7½(8-8½-8½-9-9½-10-10½)”, end on RS. Bind off 4(6-6-6-8-8-10-10) sts at armhole edge once, then 4(5-6-7-7-9-9-10) sts twice for shoulder.

## SLEEVES

With smaller needles, cast on 41(41-43-43-43-45-45-45) sts. Work in ribbing as for back for 3”, end on WS. Change to larger needles and St st and work even until sleeve measures 4” from beg, end on WS.

**Inc Row (RS):** K1, M1L, knit to last st, M1R, k1 – 2 sts inc'd. Rep Inc Row every 1¼(1-1-¾-¾-¾-½-½)” 9(11-12-15-18-17-19-19) times more – 61(65-69-75-81-81-85-85) sts. Work even until sleeve measures 18” from beg, end on WS.

**Shape Cap:** Bind off 4(4-5-6-7-7-8-8) sts at beg of the next 2 rows – 53(57-59-63-67-67-69-69) sts.

### Sizes 33, 36, 39, 42, and 45 ONLY:

**Dec Row 1 (RS):** K1, k3tog, knit to last 3 sts, SSSK, k1 – 4 sts dec'd. Rep Dec Row 1 every RS row 2(1-0-2-2-X-X-X) times more, end on WS.

## ALL SIZES

**Dec Row 2 (RS):** K1, k2tog, knit to last 3 sts, SSK, k1 – 2 sts dec'd. Rep Dec Row 2 every 4th row 0(0-0-0-0-0-1-3) times, then every RS row 16(17-18-16-18-21-

21-17) times more, end on WS – 7(13-17-17-17-23-23-27) sts. Bind off remaining 7(13-17-17-17-23-23-27) sts.

## FINISHING

Sew shoulder seams. Sew in sleeves. Sew side and sleeve seams.

**Left Front Band:** With RS facing, using smaller needles, beg at neck edge, pick up and knit 93(95-97-97-99-103-105-107) sts along left front edge. Beg with Row 2, work in ribbing as for back for 1”, end on WS. Bind off in ribbing.

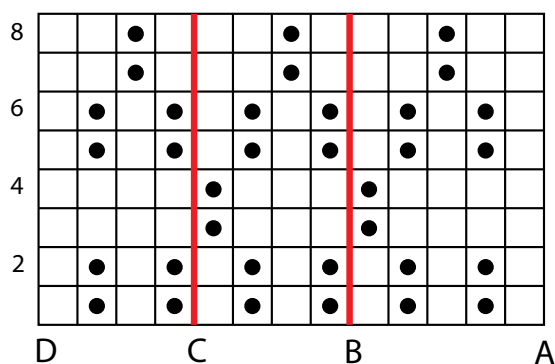
**Right Front Band:** With RS facing, using smaller needles, beg at lower edge, pick up and knit 93(95-97-97-99-103-105-107) sts along right front edge. Beg with Row 2, work in ribbing as for back for 3 rows, end on WS.

**Buttonhole Row (RS):** Work 8(5-7-7-4-8-5-7) sts, k2tog, yo, \* work 12(13-13-13-14-14-15-15) sts, k2tog, yo, rep from \* 5 times more, work to end – 6 buttonholes (7th will be in neckband). Complete as for left frontband.

**Neckband:** With RS facing, using smaller needles, beg at right front edge, pick up and knit 5 sts across top of right frontband, 31 sts along right front neck edge, 47 sts across back neck edge, 31 sts along left front neck edge, then 5 sts across top of left frontband – 119 sts. Beg with Row 2, work in ribbing as for back for 3 rows, end on WS.

**Buttonhole Row (RS):** Work 3 sts, k2tog, yo, work to end. Complete as for left frontband. Sew buttons to right frontband and neckband, corresponding to buttonholes.

DORY CHART



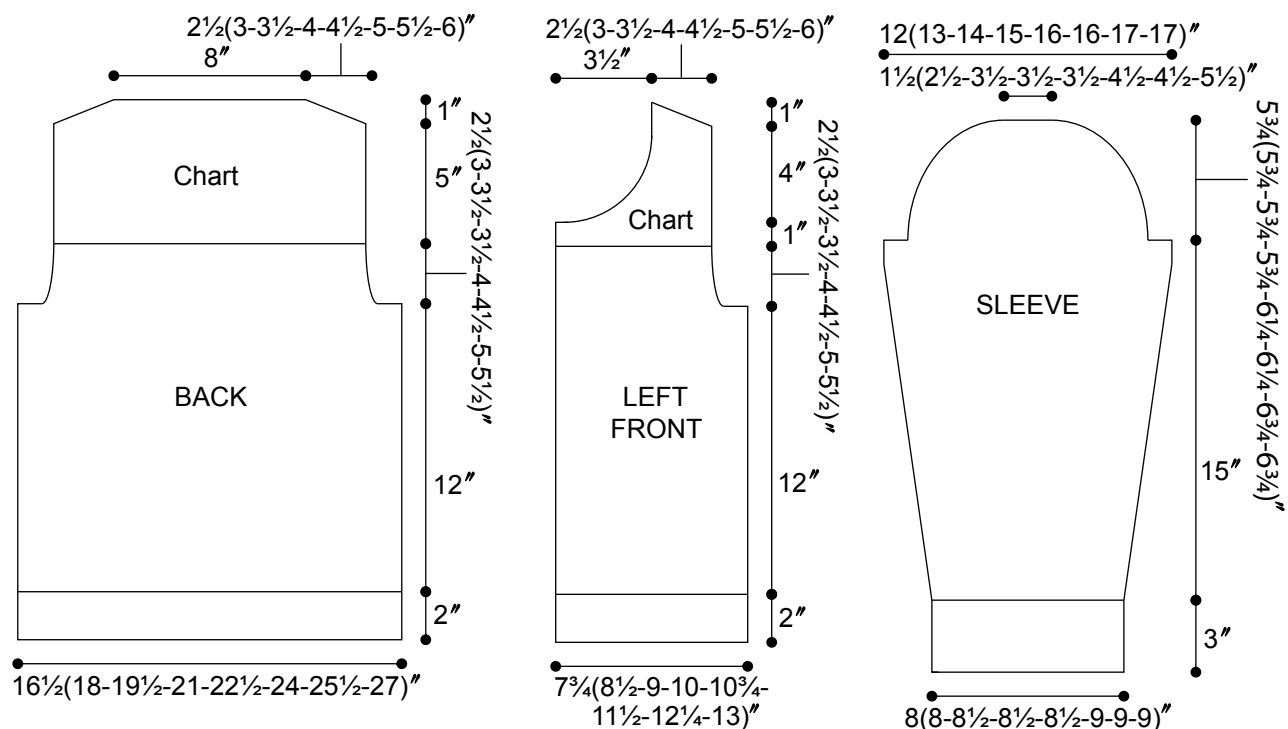
### KEY TO CHART

- knit on RS; purl on WS
- purl on RS; knit on WS

### CHART NOTES

On RS, beg at A, work to C, rep between B and C, end at D.

On WS, beg at D, work to B, rep between C and B, end at A.



## ABBREVIATIONS & TERMS

**beg:** beginning

**dec:** decrease

**inc:** increase

**k:** knit

**k2tog:** Knit 2 stitches together

**k3tog:** Knit 3 stitches together

**M1:** Pick up horizontal strand between stitch just worked and next stitch from front to back, place on left hand needle, knit this stitch through the back (1 stitch increased).

**M1L:** Work as for M1.

**M1R:** Pick up horizontal strand between stitch just worked and next stitch from back to front, place on left hand needle, knit this stitch through the front (1 stitch increased).

**p:** purl

**rep:** repeat

**RS:** right side

**SSK:** Slip 2 stitches knitwise, insert point of left hand needle through fronts of these 2 stitches and knit 2 together.

**SSSK:** Slip 3 stitches knitwise, insert point of left hand needle through fronts of these 3 stitches and knit 3 together.

**st(s):** stitch(es)

**WS:** wrong side

**yo:** yarn over

**Stockinette stitch (St st):** Knit 1 row, purl 1 row alternately when working on straight needles. The knit side is the right side of work. Knit EVERY round when working in the round on a circular needle.