

Love Berroco patterns? Sign up  
for our [KnitBits® newsletter](#).

**skill level:** Intermediate  
One size

**finished measurements**  
Approximately 76" across top edge x  
38" down center

**materials**  
3 hanks [BERROCO FIORA](#) (100 grs),  
#3812 Tybee  
36" length circular knitting needle,  
size 7 (4.50 mm) OR SIZE TO OBTAIN  
GAUGE  
4 st markers  
Tapestry needle  
Waste yarn for provisional cast-on

**gauge**  
14 sts and 16 rows = 4" in charted pat  
(after blocking)  
TO SAVE TIME, TAKE TIME TO CHECK  
GAUGE

Free Pattern



*Berroco Fiora™*



*Find this yarn  
at your LYS*

Our supercharged store locator goes above and beyond the ordinary. Innovatively linked to our inventory system, search for a yarn in your area and you'll pinpoint LYS's that have a proven history of ordering that product. A handy listing of all of the Berroco yarns the store carries and easy access to driving directions are also right at your finger tips. [Find all yarns now.](#)

Don't forget to connect with us on social media!



**NOTE:** We recommend using yarns called for in our instructions. Every effort has been made to ensure that directions contained in this book are accurate and complete, however errors do occur. We cannot be responsible for variance of individual knitters, human or typographical errors.

All pattern PDFs are updated when corrections are made. In the event of finding an error, please make sure you've downloaded the most recent version.

## SHAWL

**Garter St Tab:** With waste yarn and Fiora, using provisional cast-on, cast on 2 sts. Knit 6 rows.

**Next Row (RS):** K2, turn work 90 degrees and pick up and knit 3 sts along side edge of Garter St tab, turn work 90 degrees, then knit 2 sts from provisional cast-on, removing waste yarn – 7 sts.

**Next Row (WS):** K2, p to last 2 sts, k2.

**Establish Chart: Row 1 (RS):** K2, pm, work Row 1 of chart, pm, k1, pm, work Row 1 of chart, pm, k2 – 4 sts inc'd.

**Row 2 and all WS rows:** K2, p to last 2 sts, k2. Working charts as established, work Rows 1 – 18 of chart once, then rep Rows 19 – 34 of chart for pattern. **Note:** After each repeat of Rows 19 – 34, there will be 2 additional diamonds across in each half of the shawl. Work Rows 19 – 34 until piece measures approximately 56" across, end on Row 34. Work Rows 35 – 43 of chart once, end on RS. Knit 3 rows.

## FINISHING

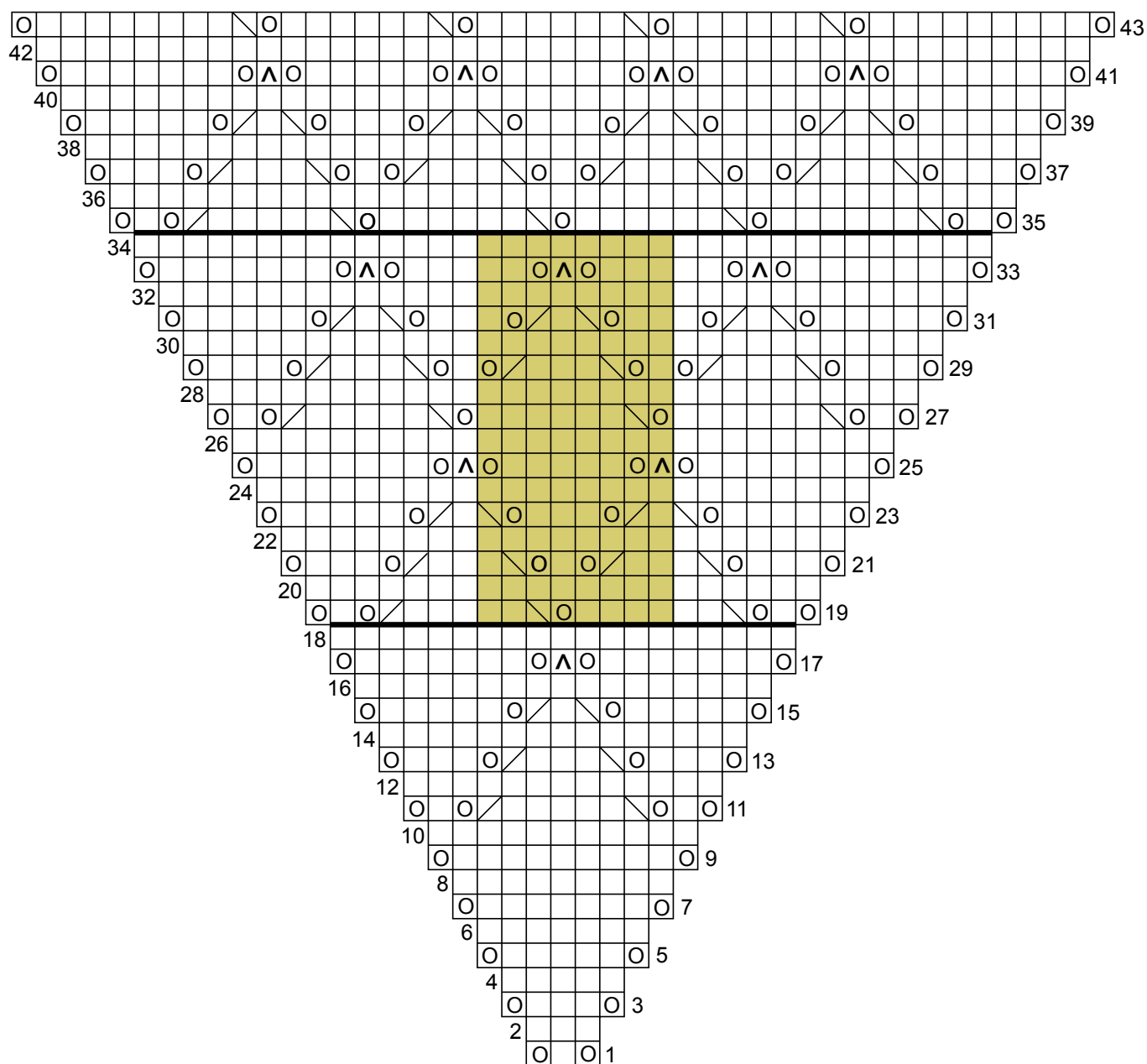
**Bind off** – we suggest using the sewn bind-off as follows:

**Step 1** – Break off yarn, leaving a very long end. Thread end through tapestry needle. With yarn threaded on tapestry needle, run the needle through the first 2 sts on LH needle from right to left, pulling the yarn all the way through.

**Step 2** – Run the needle back through the first st on needle from left to right, pulling the yarn all the way through. Drop first st off needle. Rep Steps 1 and 2 until all sts have been bound off. Weave in ends and block as desired.



## DOROTHEA CHART



## KEY TO CHART

□ K on RS, p on WS

○ Yo

▤ SSK

▥ K2tog

△ SI 1, k2tog, pssso

## CHART NOTES

Work from right to left on RS rows. Work from left to right on WS rows.

Work Rows 1 - 18 once.

Rep Rows 19 - 34 for pat.

There will be 2 more diamonds after each 16 - row repeat.

Repeat of pat is 8 sts x 16 rows shown in green.

## ABBREVIATIONS & TERMS

### Knit

**beg:** beginning  
**CC:** contrasting color  
**CDD (centered double decrease):** Slip 2 together, knit 1, pass the 2 slipped stitches over.  
**cn:** cable needle  
**cont:** continue  
**dec:** decrease  
**dpn:** double pointed needles  
**est:** established  
**inc:** increase  
**K:** knit  
**k tbl:** knit through the back loop(s)  
**k2tog:** Knit 2 stitches together  
**k3tog:** Knit 3 stitches together  
**LH:** left hand  
**MC:** main color  
**M1:** Pick up horizontal strand between stitch just worked and next stitch from front to back, place on left hand needle, knit this stitch through the back (1 stitch increased).  
**M1L:** Work as for M1.  
**M1p:** Pick up horizontal strand between stitch just worked and next stitch from front to back, place on left hand needle, purl this stitch through the back (1 stitch increased).  
**M1pL:** Work as for M1p.  
**M1pR:** Pick up horizontal strand between stitch just worked and next stitch from back to front, place on left hand needle, purl this stitch through the front (1 stitch increased).  
**M1R:** Pick up horizontal strand between stitch just worked and next stitch from back to front, place on left hand needle, knit this stitch through the front (1 stitch increased).  
**p:** purl  
**p tbl:** purl through the back loop(s)  
**pat(s):** pattern(s)  
**pm:** place marker  
**pssso:** pass slip stitch over knit stitch  
**p2tog:** purl 2 stitches together  
**p2sso:** pass 2 slip stitches over knit stitch  
**p3tog:** purl 3 stitches together  
**rem:** remaining  
**rep:** repeat  
**RH:** right hand  
**rnd(s):** round(s)  
**RS:** right side  
**sl:** slip  
**sm:** slip marker

**SSK:** Slip 2 stitches knitwise, insert point of left hand needle through fronts of these 2 stitches and knit 2 together.

**SSP:** Slip 2 stitches knitwise, transfer these 2 stitches back to left hand needle, purl 2 together through the back loops.

**st(s):** stitch(es)

**TBL:** through back loop(s)

**tog:** together

**WS:** wrong side

**wyib:** with yarn in back

**wyif:** with yarn in front

**yo:** yarn over

**end on WS:** end having just completed a Wrong Side row.

**end on RS:** end having just completed a Right Side row

**STOCKINETTE ST (St st):** Knit 1 row, purl 1 row alternately when working on straight needles. The knit side is the right side of work. Knit EVERY round when working in the round on a circular needle.

**Reverse St st (Rev St st):** Purl 1 row, knit 1 row alternately when working on straight needles. The purl side is the right side of the work. Purl EVERY round when working in the round on a circular needle.

**GARTER ST:** Knit EVERY row when working on straight needles. Knit 1 round, purl 1 round when working on a circular needle.

### Crochet

**ch:** chain

**dc:** double crochet

**hdc:** half double crochet

**sc:** single crochet

**sl st:** slip stitch

**sp:** space

**tr:** treble