

Love Berroco patterns? Sign up for our **KnitBits®** newsletter.

skill level: Intermediate
Shown in size Small

sizes

Directions are for women's size X-Small. Changes for sizes Small, Medium, Large, 1X, 2X and 3X are in parentheses.

To Fit Bust Size: 30(34-38-42-46-50-54)"

finished measurements

Bust (closed) – 32(36-40-44-48-52-56)"

Length – 23½(24-24½-24½-25-25½-26)"

Note: This garment was designed with approximately 2" of ease. Please take this into consideration when selecting your size.

materials

5(5-6-6-7-8-8) hanks **BERROCO MODERN COTTON** (100 grs), #1658 Bristol

Straight knitting needles, size 7 (4.50 mm) OR SIZE TO OBTAIN GAUGE

29" length circular knitting needle, size 6 (4.00 mm)

Six ½" buttons

gauge

20 sts and 26 rows = 4" in St st on larger needles

TO SAVE TIME, TAKE TIME TO CHECK GAUGE



Berroco Modern Cotton™



Find this yarn at your LYS

Our supercharged store locator goes above and beyond the ordinary. Innovatively linked to our inventory system, search for a yarn in your area and you'll pinpoint LYS's that have a proven history of ordering that product. A handy listing of all of the Berroco yarns the store carries and easy access to driving directions are also right at your finger tips. *Find all yarns now.*



Don't forget to connect with us on social media!



NOTE: We recommend using yarns called for in our instructions. Every effort has been made to ensure that directions contained in this book are accurate and complete, however errors do occur. We cannot be responsible for variance of individual knitters, human or typographical errors.

All pattern PDFs are updated when corrections are made. In the event of finding an error, please make sure you've downloaded the most recent version.

BACK

With straight needles, cast on 81(91-101-111-121-131-141) sts. Knit 3 rows, end on WS.

Establish Chart: Row 1 (RS): K0(1-2-3-0-1-2), work Row 1 of chart to last 0(1-2-3-0-1-2) sts, k to end.

Row 2: P0(1-2-3-0-1-2), work Row 2 of chart to last 0(1-2-3-0-1-2) sts, p to end. Work even in pat as established until Row 7 of chart has been completed, end on RS. Knit 3 rows. Work even in St st until piece measures 4" from beg, end on WS.

Dec Row (RS): K1, k2tog, k to last 3 sts, SSK, k1 – 2 sts dec'd. Rep Dec Row every 1¼" 4 times more – 71(81-91-101-111-121-131) sts. Work even until piece measures 11" from beg, end on WS.

Inc Row (RS): K1, M1L, k to last st, M1R, k1 – 2 sts inc'd. Rep Inc Row every ¾" 4 times more – 81(91-101-111-121-131-141) sts. Work even until piece measures 15" from beg, end on WS.

Shape Armholes: Bind off 4(5-6-7-8-9-10) sts at beg of the next 2 rows – 73(81-89-97-105-113-121) sts. Dec 1 st each side EVERY row 0(0-0-2-6-6-8) times, then every RS row 6(9-12-11-9-10-10) times – 61(63-65-71-75-81-85) sts. Work even until armholes measures 7½(8-8½-8½-9-9½-10)", end on WS.

Shape Shoulders: Bind off 5(5-5-6-7-8-9) sts at beg of the next 4 rows, then 4(5-6-7-7-8-8) sts at beg of the next 2 rows. Bind off remaining 33 sts for back neck.

LEFT FRONT

With straight needles, cast on 38(43-48-53-58-63-68) sts. Knit 3 rows, end on WS.

Establish Chart: Row 1 (RS): K2(1-3-2-0-3-1), work Row 1 of chart to last 3(1-4-2-1-3-2) sts, k to end.



Row 2: P3(1-4-2-1-3-2), work Row 2 of chart to last 2(1-3-2-0-3-1) sts, p to end. Work even in pat as established until Row 7 of chart has been completed, end on RS. Knit 3 rows. Work even in St st until piece measures 4" from beg, end on WS.

Dec Row (RS): K1, k2tog, k to end – 1 st dec'd. Rep Dec Row every 1¼" 4 times more – 33(38-43-48-53-58-63) sts. Work even until piece measures 11" from beg, end on WS.

Inc Row (RS): K1, M1L, k to end – 1 st inc'd. Rep this inc every ¾" 4 times more – 38(43-48-53-58-63-68) sts. Work even until piece measures 15" from beg, end on WS.

Shape Armhole and V-Neck: Next Row (RS): Bind off 4(5-6-7-8-9-10) sts, k to last 3 sts, SSK, k1 (neck dec) – 33(37-41-45-49-53-57) sts. Purl 1 row. Dec 1 st at armhole edge EVERY row 0(0-0-2-6-6-8) times, then every RS row 6(9-12-11-9-10-10) times. AT THE SAME TIME, continue to dec 1 st at neck edge every RS row 3(2-0-0-0-0-0) times, every 4th row 10(11-13-13-11-10-9) times, then every 6th row 0(0-0-0-2-3-4) times. When all armhole and

neck decs have been completed, work even on remaining 14(15-16-19-21-24-26) sts until armhole measures 7½(8-8½-8½-9-9½-10)”, end on WS. Bind off 5(5-5-6-7-8-9) sts at armhole edge twice, then 4(5-6-7-7-8-8) sts once for shoulder.

RIGHT FRONT

With straight needles, cast on 38(43-48-53-58-63-68) sts. Knit 3 rows, end on WS.

Establish Chart: Row 1 (RS): K3(1-4-2-1-3-2), work Row 1 of chart to last 2(1-3-2-0-3-1) sts, k to end.

Row 2: P2(1-3-2-0-3-1), work Row 2 of chart to last 3(1-4-2-1-3-2) sts, p to end. Work even in pat as established until Row 7 of chart has been completed, end on RS. Knit 3 rows. Work even in St st until piece measures 4” from beg, end on WS.

Dec Row (RS): K to last 3 sts, SSK, k1 – 1 st dec’d. Rep Dec Row every 1¼” 4 times more – 33(38-43-48-53-58-63) sts. Work even until piece measures 11” from beg, end on WS.

Inc Row (RS): K to last st, M1R, k1 – 1 st inc’d. Rep this inc every ¾” 4 times more – 38(43-48-53-58-63-68) sts. Work even until piece measures 15” from beg, end on WS.

Shape Neck: Next Row (RS): K1, k2tog, (neck dec), k to end – 1 st dec’d.

Shape Armhole: Next Row (WS): Bind off 4(5-6-7-8-9-10) sts, p to end – 33(37-41-45-49-53-57) sts. Dec 1 st at armhole edge EVERY row 0(0-0-2-6-6-8) times, then every RS row 6(9-12-11-9-10-10) times. AT THE SAME TIME, continue to dec 1 st at neck edge every RS row 3(2-0-0-0-0-0) times, every 4th row 10(11-13-13-11-10-9) times, then every 6th row 0(0-0-0-2-3-4) times. When all neck and armhole decs have been completed, work even on 14(15-16-19-21-24-26) sts until armhole measures 7½(8-8½-8½-9-9½-10)”, end on RS. Bind off 5(5-5-6-7-8-9) sts at armhole edge twice, then 4(9-6-7-7-8-8) sts once for shoulder.

SLEEVES

With straight needles, cast on 61(67-71-75-81-85-91) sts. Knit 3 rows, end on WS.

Establish Chart: Row 1 (RS): K2(1-3-1-0-2-1), work Row 1 of chart to last 2(1-3-1-0-2-1) sts, k to end.

Row 2: P2(1-3-1-0-2-1), work Row 2 of chart to last 2(1-3-1-0-2-1) sts, p to end. Work even in pat as established until Row 7 of chart has been completed, end on RS. Knit 3 rows. Work even in St st until sleeve measures 12” from beg, end on WS.

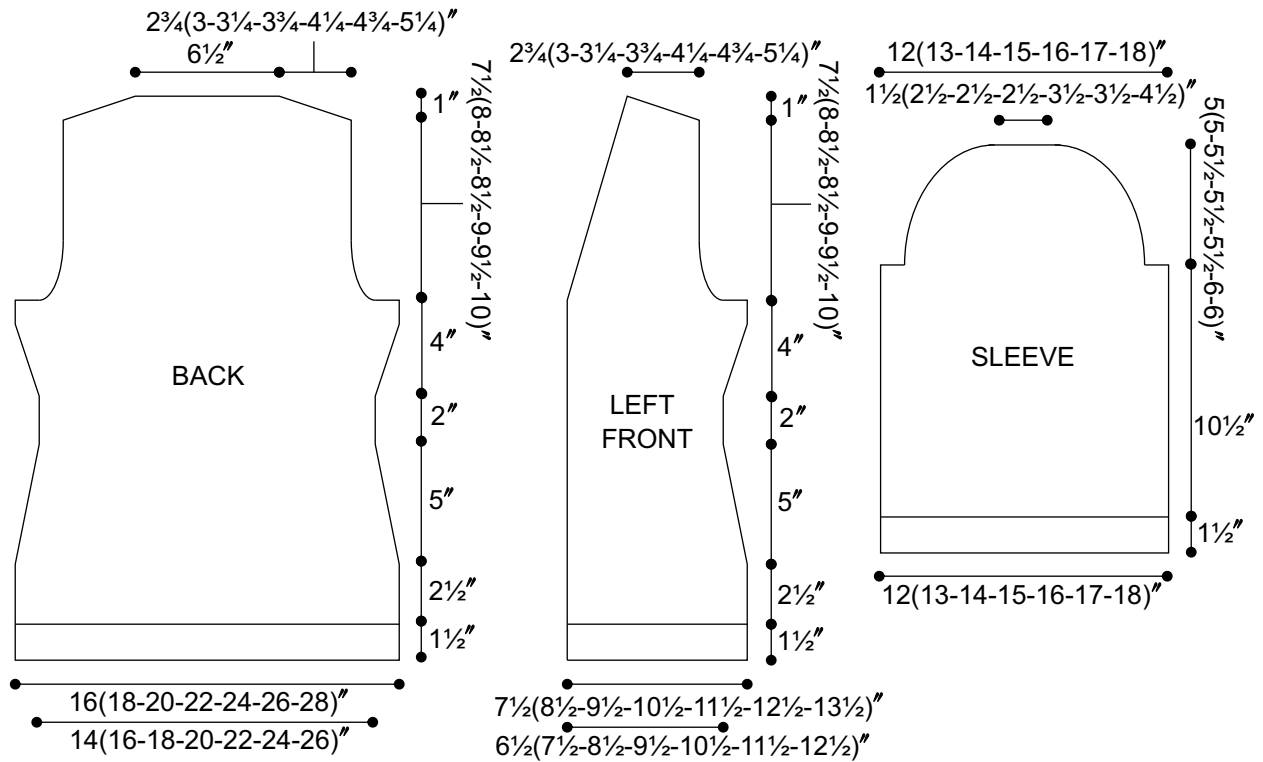
Shape Cap: Bind off 4(5-6-7-8-9-10) sts at beg of the next 2 rows – 53(57-59-61-65-67-71) sts. Dec 1 st each side every RS row 9(10-13-12-12-15-16) times, then EVERY row 14(12-10-12-12-10-8) times, end on WS. Bind off remaining 7(13-13-13-17-17-23) sts.

FINISHING

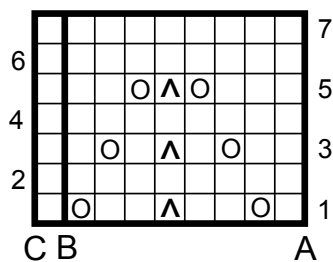
Sew shoulder seams. Sew in sleeves. Sew side and sleeve seams.

Front/Neckband: With RS facing, using circular needle, beg at lower right front edge, pick up and k75 sts along right front edge to beg of neck shaping, 40(43-45-45-48-50-53) sts along right front neck edge, 33 sts across back neck edge, 40(43-45-45-48-50-53) sts along left front neck edge, then 75 sts along left front edge – 263(269-273-273-279-283-289) sts. Knit 3 rows, end on WS.

Buttonhole Row (RS): K4, yo, k2tog, * k14, yo, k2tog, rep from * 4 times more, k to end. Knit 3 rows. Bind off. Sew on buttons.



CARIOCA CHART



KEY TO CHART

- K on RS, p on WS
- Yo
- △ CDD: sl 2 together as if to k2tog, k1, pass 2 sl sts tog over k1

CHART NOTES

On RS, beg at A, work to B, rep between A and B, end at C.
 On WS, beg at C, work to A, rep between B and A.

ABBREVIATIONS & TERMS

Knit

beg: beginning

CC: contrasting color

CDD (centered double decrease): Slip 2 together, knit 1, pass the 2 slipped stitches over.

cn: cable needle

cont: continue

dec: decrease

dpn: double pointed needles

est: established

inc: increase

K: knit

k tbl: knit through the back loop(s)

k2tog: Knit 2 stitches together

k3tog: Knit 3 stitches together

LH: left hand

MC: main color

M1: Pick up horizontal strand between stitch just worked and next stitch from front to back, place on left hand needle, knit this stitch through the back (1 stitch increased).

M1L: Work as for M1.

M1p: Pick up horizontal strand between stitch just worked and next stitch from front to back, place on left hand needle, purl this stitch through the back (1 stitch increased).

M1pL: Work as for M1p.

M1pR: Pick up horizontal strand between stitch just worked and next stitch from back to front, place on left hand needle, purl this stitch through the front (1 stitch increased).

M1R: Pick up horizontal strand between stitch just worked and next stitch from back to front, place on left hand needle, knit this stitch through the front (1 stitch increased).

p: purl

p tbl: purl through the back loop(s)

pat(s): pattern(s)

pm: place marker

pssso: pass slip stitch over knit stitch

p2tog: purl 2 stitches together

p2sso: pass 2 slip stitches over knit stitch

p3tog: purl 3 stitches together

rem: remaining

rep: repeat

RH: right hand

rnd(s): round(s)

RS: right side

sl: slip

sm: slip marker

SSK: Slip 2 stitches knitwise, insert point of left hand needle through fronts of these 2 stitches and knit 2 together.

SSP: Slip 2 stitches knitwise, transfer these 2 stitches back to left hand needle, purl 2 together through the back loops.

st(s): stitch(es)

TBL: through back loop(s)

tog: together

WS: wrong side

wyib: with yarn in back

wyif: with yarn in front

yo: yarn over

end on WS: end having just completed a Wrong Side row.

end on RS: end having just completed a Right Side row

STOCKINETTE ST (St st): Knit 1 row, purl 1 row alternately when working on straight needles. The knit side is the right side of work. Knit EVERY round when working in the round on a circular needle.

Reverse St st (Rev St st): Purl 1 row, knit 1 row alternately when working on straight needles. The purl side is the right side of the work. Purl EVERY round when working in the round on a circular needle.

GARTER ST: Knit EVERY row when working on straight needles. Knit 1 round, purl 1 round when working on a circular needle.

Crochet

ch: chain

dc: double crochet

hdc: half double crochet

sc: single crochet

sl st: slip stitch

sp: space

tr: treble