

Berta

Beroco Berta

Designed by Amy Christoffers



skill level: Intermediate

One size

finished measurements

Approximately 62" across top edge x
30" down center

materials

3 hanks **BERROCO FOLIO LUXE** (50 grs),
#4628 Orion

36" length circular knitting needle, size
7 (4.50 mm) OR SIZE TO OBTAIN GAUGE
4 st markers

Tapestry needle

Waste yarn for provisional cast-on

gauge

16 sts and 32 rows = 4" in charted pat
(after blocking)

TO SAVE TIME, TAKE TIME TO CHECK
GAUGE



Beroco Folio® Luxe

Find this Yarn 

 **BERROCO®**
www.berroco.com

Love Berroco patterns?
Sign up for our **KnitBits®** newsletter.



Don't forget to connect with us on social media!



NOTE: We recommend using yarns called for in our instructions. Every effort has been made to ensure that directions contained in this book are accurate and complete, however errors do occur. We cannot be responsible for variance of individual knitters, human or typographical errors.

All pattern PDFs are updated when corrections are made. In the event of finding an error, please make sure you've downloaded the most recent version.

SHAWL

Garter St Tab: With waste yarn and Folio Luxe, using provisional cast-on, cast on 2 sts. Knit 6 rows.

Next Row (RS): K2, turn work 90 degrees and pick up and knit 3 sts along side edge of Garter St tab, turn work 90 degrees, then knit 2 sts from provisional cast-on, removing waste yarn – 7 sts.

Next Row (WS): Knit.

Establish Chart: Row 1 (RS): K2, pm, work Row 1 of chart, pm, k1, pm, work Row 1 of chart, pm, k2 – 4 sts inc'd.

Row 2 and all WS rows: Knit.

Working charts as established, work Rows 1 – 18 of chart once, then rep Rows 19 – 34 of chart for pattern. **Note:** After each repeat of Rows 19 – 34, there will be 2 additional diamonds across in each half of the shawl. Work Rows 19 – 34 eight times total. Work Rows 35 – 43 of chart once, end on RS. Knit 3 rows.

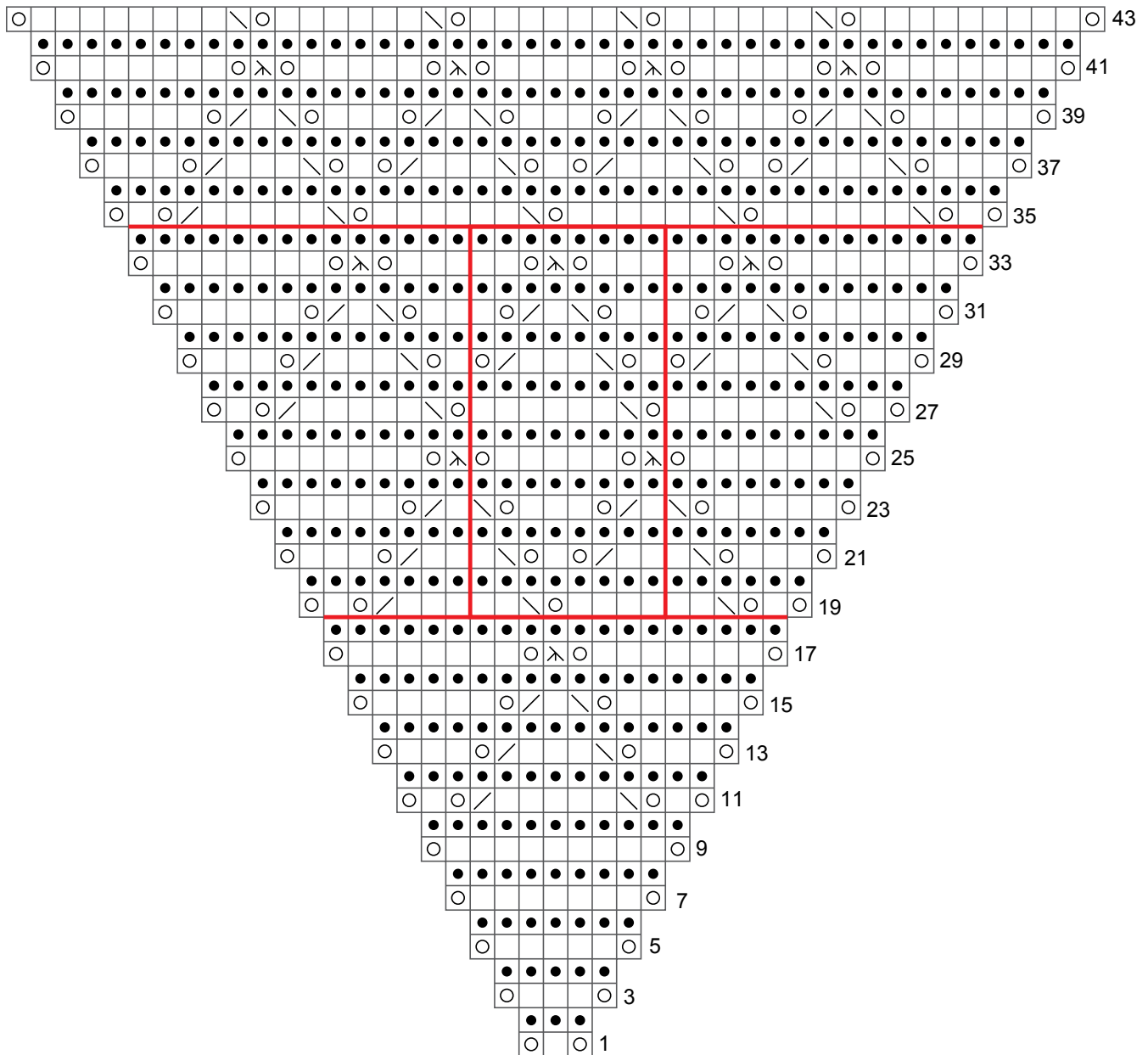
FINISHING

Bind off – we suggest using the sewn bind-off as follows:

Step 1 – Break off yarn, leaving a very long end. Thread end through tapestry needle. With yarn threaded on tapestry needle, run the needle through the first 2 sts on LH needle from right to left, pulling the yarn all the way through.

Step 2 – Run the needle back through the first st on needle from left to right, pulling the yarn all the way through. Drop first st off needle. Rep Steps 1 and 2 until all sts have been bound off. Weave in ends and block as desired.





KEY TO CHART

- knit on RS
- knit on WS
- yarn over
- k2tog
- ssk
- sl 1, k2tog, pass slipped st over
- pattern repeat

CHART NOTES

Work from right to left on RS rows. Work from left to right on WS rows.

Work Rows 1-18 once.
 Rep Rows 19-34 for pat.
 There will be 2 more diamonds after each 16-row repeat.
 Repeat of pat is 8 sts x 16 rows, outlined in red.

ABBREVIATIONS & TERMS

Knit

beg: beginning

CC: contrasting color

CDD (centered double decrease): Slip 2 together, knit 1, pass the 2 slipped stitches over.

cn: cable needle

cont: continue

dec: decrease

dpn: double pointed needles

est: established

inc: increase

K: knit

k tbl: knit through the back loop(s)

k2tog: Knit 2 stitches together

k3tog: Knit 3 stitches together

LH: left hand

MC: main color

M1: Pick up horizontal strand between stitch just worked and next stitch from front to back, place on left hand needle, knit this stitch through the back (1 stitch increased).

M1L: Work as for M1.

M1p: Pick up horizontal strand between stitch just worked and next stitch from front to back, place on left hand needle, purl this stitch through the back (1 stitch increased).

M1pL: Work as for M1p.

M1pR: Pick up horizontal strand between stitch just worked and next stitch from back to front, place on left hand needle, purl this stitch through the front (1 stitch increased).

M1R: Pick up horizontal strand between stitch just worked and next stitch from back to front, place on left hand needle, knit this stitch through the front (1 stitch increased).

p: purl

p tbl: purl through the back loop(s)

pat(s): pattern(s)

pm: place marker

pssso: pass slip stitch over knit stitch

p2tog: purl 2 stitches together

p2sso: pass 2 slip stitches over knit stitch

p3tog: purl 3 stitches together

rem: remaining

rep: repeat

RH: right hand

rnd(s): round(s)

RS: right side

sl: slip

sm: slip marker

SSK: Slip 2 stitches knitwise, insert point of left hand needle through fronts of these 2 stitches and knit 2 together.

SSP: Slip 2 stitches knitwise, transfer these 2 stitches back to left hand needle, purl 2 together through the back loops.

st(s): stitch(es)

TBL: through back loop(s)

tog: together

WS: wrong side

wyib: with yarn in back

wyif: with yarn in front

yo: yarn over

end on WS: end having just completed a Wrong Side row.

end on RS: end having just completed a Right Side row

STOCKINETTE ST (St st): Knit 1 row, purl 1 row alternately when working on straight needles. The knit side is the right side of work. Knit EVERY round when working in the round on a circular needle.

Reverse St st (Rev St st): Purl 1 row, knit 1 row alternately when working on straight needles. The purl side is the right side of the work. Purl EVERY round when working in the round on a circular needle.

GARTER ST: Knit EVERY row when working on straight needles. Knit 1 round, purl 1 round when working on a circular needle.

Crochet

ch: chain

dc: double crochet

hdc: half double crochet

sc: single crochet

sl st: slip stitch

sp: space

tr: treble