

skill level: Intermediate
Shown in size Small

sizes

Directions are for women's size Small. Changes for sizes Medium, Large, 1X and 2X are in parentheses.

To Fit Bust Size: 30(34-38-42-46)"

finished measurements

Width – 44½(48½-54-61½-69)"
(including edging)

Length – 26(26-28-28-30)"
(including edging)

Note: This garment was designed with approximately 3" of ease at the bust. There is, however, a large overlap which allows each size to fit multiple sizes.

materials

8(9-10-12-14) Hanks **BERROCO CAPTIVA** (50 grs), #5542 Antique Copper
Crochet hook, size 5.50 mm (I) OR
SIZE TO OBTAIN GAUGE
Tapestry needle
Spray bottle and pins for blocking

gauge

20 sts (2 stitch repeats) = 3¾"; 8 rows = 4" in Berne lace stitch pattern.

Free Pattern



Berroco Captiva®



Find this yarn at your LYS

Our supercharged store locator goes above and beyond the ordinary. Innovatively linked to our inventory system, search for a yarn in your area and you'll pinpoint LYS's that have a proven history of ordering that product. A handy listing of all of the Berroco yarns the store carries and easy access to driving directions are also right at your finger tips. *Find all yarns now.*

NOTE: We recommend using yarns called for in our instructions. Every effort has been made to ensure that directions contained in this book are accurate and complete, however errors do occur. We cannot be responsible for variance of individual knitters, human or typographical errors.

All pattern PDFs are updated when corrections are made. In the event of finding an error, please make sure you've downloaded the most recent version.

BERNE LACE STITCH PATTERN

See stitch diagram for assistance.

Chain a multiple of 8 plus 3.

Row 1(RS): Dc in 4th ch from hook, dc in next ch, *ch 5, sk 3 ch, dc in next 5 ch; rep from * across to last 6 ch, ch 5, sk 3 ch, dc in last 3 ch, turn.

Row 2: Ch 3 (counts as dc throughout), dc in next dc, *ch 3, sc in next ch-5 sp, ch 3, sk 1 dc**, dc in next 3 dc, sk 1 dc; rep from * across to last 2 sts ending at **, dc in next dc, dc in top of tch, turn.

Row 3: Ch 1, sc in dc, *ch 4, dc in ch-3 sp, dc in sc, dc in next ch-3 sp, ch 4, sk 1 dc, sc in next dc; rep from * across, turn.

Row 4: Ch 7, *dc in ch-4 sp, dc in next 3 dc, dc in next ch-4 sp**, ch 5; rep from * across to last sc ending at **, ch 2, dtr in last sc, turn.

Row 5: Ch 1, sc in dtr, *ch 3, sk 1 dc, dc in next 3 dc, sk 1 dc, ch 3, sc in next ch-sp; rep from * across, turn.

Row 6: Ch 3, dc in next ch-3 sp, *ch 4, sk 1 dc, sc in next dc, ch 4, dc in next ch-3 sp, dc in next sc**, dc in next ch-3 sp; rep from * across ending at **, turn.

Row 7: Ch 3, dc in next dc, dc in next ch-4 sp, *ch 5, dc in next ch-4 sp, dc in next 3 dc, dc in next ch-4 sp; rep from * across to last ch-4 sp, ch 5, dc in next ch-4 sp, dc in next dc, dc in top of tch, turn.

Rep Rows 2-7 to desired length.

PATTERN BOTTOM

Ch 187 (203, 226, 258, 290)

For Sizes Small and Medium ONLY: Row 1(RS): Dc in 4th ch from hook, dc in next ch, *ch 5, sk 3 ch, dc in next 5 ch; rep from * across to last 6 ch, ch 5, sk 3 ch, dc in last 3 ch, turn. 23(25-X-X-X) ch-sps

For Sizes Large and 1X ONLY: Row 1 (RS): Sc in 2nd ch from hk, *sk 2 ch, ch 3, hdc in next 3 ch, ch

3, sk 2 ch, sc in next ch; rep from * across, turn. X(X-56-64-X) ch-sps

Rows 2-3: Rep Rows 6-7 of Berne lace st patt

For Size 2X ONLY: Row 1 (RS): Sc in 2nd ch from hk, *sk 2 ch, ch 4, dc in next 3 ch, ch 4, sk 2 ch, sc in next ch; rep from * across, turn. X(X-X-X-72) ch-sps

Rows 2-5: Rep Rows 4-7 of Berne lace st patt

For ALL Sizes:

Rep Rows 2-7 of Berne lace st patt 5 times, Rep Row 2

ARMHOLE SHAPING

For Sizes: S/ M/ L

Front Panel

Row 1: Rep Row 3 of Berne lace st patt

Row 2a: Rep Row 4 of Berne lace st patt for 6 (7, 8) ch-5 sps, dc3tog over next ch-4 sp and next 2 dc, turn.

Row 3a: Ch 3, sc in ch-5 sp, rep Row 5 of Berne lace st patt, turn.

Rows 4a-5a: Rep Rows 6-7 of Berne lace st patt (6, 7, 8 SR)



Rows 6a-11a: Rep Rows 2-7 of Berne lace st patt

Rows 12a-14a: Rep Rows 2-4 of Berne lace st patt, (S M) ch 15, lay down yarn.

For Size Large ONLY: Rows 15a-16a: Rep Rows 5-6 of Berne lace st patt, ch 15, lay down yarn.

Back Panel

Row 2b: Sk 2 ch-4 sps from end of Row 2a, join new ball of yarn with sl st to next dc, ch 3, dc3tog over next 2 dc and next ch-4 sp, ch 5, rep Row 4 of Berne lace st patt for 8 (8, 9) ch-sps total, dc3tog over next ch-4 sp and next 2 dc, turn.

Row 3b: Ch 3, sc in ch-5 sp, rep Row 5 of Berne lace st patt to last ch-5 sp, sc in ch-5 sp, dc in top of dc3tog, turn.

Row 4b: Ch 3, dc in ch-3 sp, rep Row 6 of Berne lace st patt across, turn. (7, 7, 8 SR)

Row 5b-14b (14b, 16b): Rep directions for front panel, Rows 5a-14a (14a, 16a).

Pick up yarn at end of chains from Row 14a (14a, 16a) join to top of tch of Row 14b (14b, 16b) with sl st, fasten off.

Opp Front Panel

Row 2c: Sk 2 ch-4 sps from end of Row 2b, join new ball of yarn with sl st to next dc, ch 3, dc3tog over next 2 dc and next ch-4 sp, ch 5, rep Row 4 of Berne lace st patt to end, turn.

Row 3c: Rep Row 5 of Berne lace st patt to last ch-5 sp, sc in ch-5 sp, dc in top of dc3tog, turn.

Row 4c: Ch 3, dc in ch-3 sp, rep Row 6 of Berne lace st patt across, turn. (6, 7, 8 SR)

Row 5c-14c (14c, 16c): Rep directions for front panel, rows 5a-14a (14a, 16a).

Pick up yarn at end of Row 14b (14b, 16b) join to top of tch of Row 14c (14c, 16c) with sl st, fasten off.

For Sizes XL/ 2X

Front Panel

Row 1a: Rep Row 3 of Berne lace st patt for 20 (22) ch-4 sps, sk 1 dc, sc in next dc, fasten off, turn.

Row 2a: Join yarn with sl st to next dc, ch 3, dc3tog over next 2 dc and next ch-4 sp, ch 5, rep Row 4 of Berne lace st patt to end, turn. (9, 10 ch-5 sps)

Row 3a: Rep Row 5 of Berne lace st patt to last ch-5 sp, sc in ch-5 sp, dc in top of dc3tog, turn.

Row 4a: Ch 3, dc in ch-3 sp, rep Row 6 of Berne lace st patt across, turn. (9, 10 SR)

Rows 5a-16a: Rep Rows 7, 2-7, 2-6 of Berne lace st patt, (XL), lay down yarn.

For Size 2X ONLY: Rows 17a-18a: Rep Rows 7, 2 of Berne lace st patt, lay down yarn.

Back Panel

Row 1b: Sk 2 (4) ch-4 sps, join new ball of yarn with sl st in next dc, sc in next dc, rep Row 3 of Berne lace st patt for 20 (20) ch-4 sps, sk 1 dc, sc in next dc, fasten off, turn.

Row 2b: Join yarn with sl st to next dc, ch 3, dc3tog over next 2 dc and next ch-4 sp, , ch 5, rep Row 4 of Berne lace st patt across to last 2 ch-4 sps, dc3tog over next ch-4 sp and next 2 dc, turn. (9, 9 ch-5 sps)

Row 3b: Ch 3, sc in ch-5 sp, rep Row 5 of Berne lace st patt to last ch-5 sp, sc in ch-5 sp, dc in top of dc3tog, turn.

Row 4b: Ch 3, dc in ch-3 sp, rep Row 6 of Berne lace st patt across, turn. (8, 8 SR)



Row 5b-16b: Rep directions for front panel, rows 5a-16a.

For Size 1X ONLY: Ch 23, sl st to top of tch of Row 16a, fasten off.

For Size 2X ONLY: Rows 17b-18b: Rep rows 7, 2 of Berne lace st patt. Ch 31, sl st to top of tch of row 18a.

Opp Front Panel

Row 1c: Sk 2 (4) ch-4 sps, join new ball of yarn with sl st in next dc, sc in next dc, rep Row 3 of Berne lace st patt to end, turn.

Row 2c: Rep Row 4 of Berne lace st patt across to last 2 ch-4 sps, dc3tog over next ch-4 sp and next 2 dc, turn. (9, 10 ch-5 sps)

Row 3c: Ch 3, sc in ch-5 sp, rep Row 5 of Berne lace st patt to end, turn. (9, 10 SR)

Row 4c-16c: Rep directions for front panel, rows 5a-16a.

For Size 1X ONLY: Ch 23, sl st to top of tch of Row 16b, fasten off.

For Size 2X ONLY: Rows 17c-18c: Rep rows 7, 2 of Berne lace st patt. Ch 31, sl st to top of tch of Row 18b, fasten off.

COLLAR

For Sizes: S/ M

Row 1: *Rep Row 5 of Berne lace st patt across to ch-sp for armhole, ch 3, sk 2 ch, hdc in next 3 ch, ch 3, sk 2 ch, sc in next ch, ch 3, sk 2 ch, hdc in next 3 ch, ch 3, sk last 2 ch; rep from * across, cont in Row 5 of Berne lace st patt to end, turn.

Rows 2-5: Rep Rows 6-7, 2-3 of Berne lace st patt

Row 6: Ch 6, *dc in next ch-4 sp, dc in next 3 dc, dc in next ch-4 sp**, ch 3; rep from * across to last ch-4 sp ending at **, ch 1, dtr in last sc, fasten off.

For Sizes: L/ XL

Row 1: *Rep Row 7 of Berne lace st patt across to ch-sp for armhole, **hdc in next 2 ch, ch 5, sk 3 ch, hdc in next 3 ch, rep from ** across armhole ch, ending with hdc in last 2 ch; rep from * across, cont in Row 7 of Berne lace st patt across to end, turn.

Rows 2-5: Rep Rows 2-5 of Berne lace st patt

Row 6: Ch 3, dc in next ch-3 sp, *ch 3, sk 1 dc, dc in

next dc, sk 1 dc, ch 3, dc in next ch-3 sp, dc in next sc**, dc in next ch-3 sp; rep from * across ending at **, fasten off.

For Size: 2X

Row 1: *Rep Row 3 of Berne lace st patt across to ch-sp for armhole, **ch 4, sk 2 ch, dc in next 3 ch, ch 4, sk 2 ch, sc in next ch, rep from ** across armhole ch; rep from * across, cont in Row 3 of Berne lace st patt across to end, turn.

Rows 2-5: Rep Rows 4-7 of Berne lace st patt

Row 6: Ch 3, dc in next dc, *ch 2, sc in next ch-5 sp, ch 2, sk 1 dc, dc in next 3 dc; rep from * across, fasten off.

FINISHING

Blocking: Pin body to schematic size. Spray with water and allow to dry.

Vest Edging: Join yarn to RS edge with sl st

Rnd 1 (RS): Ch 1, *sc evenly across edge, 3 sc in corner; rep from * around, sl st to first sc, turn.

Rnd 2: Ch 3, *dc in ea sc across, 5 dc in middle sc of 3 sc in corner, rep from * around, sl st to top of tch, turn.

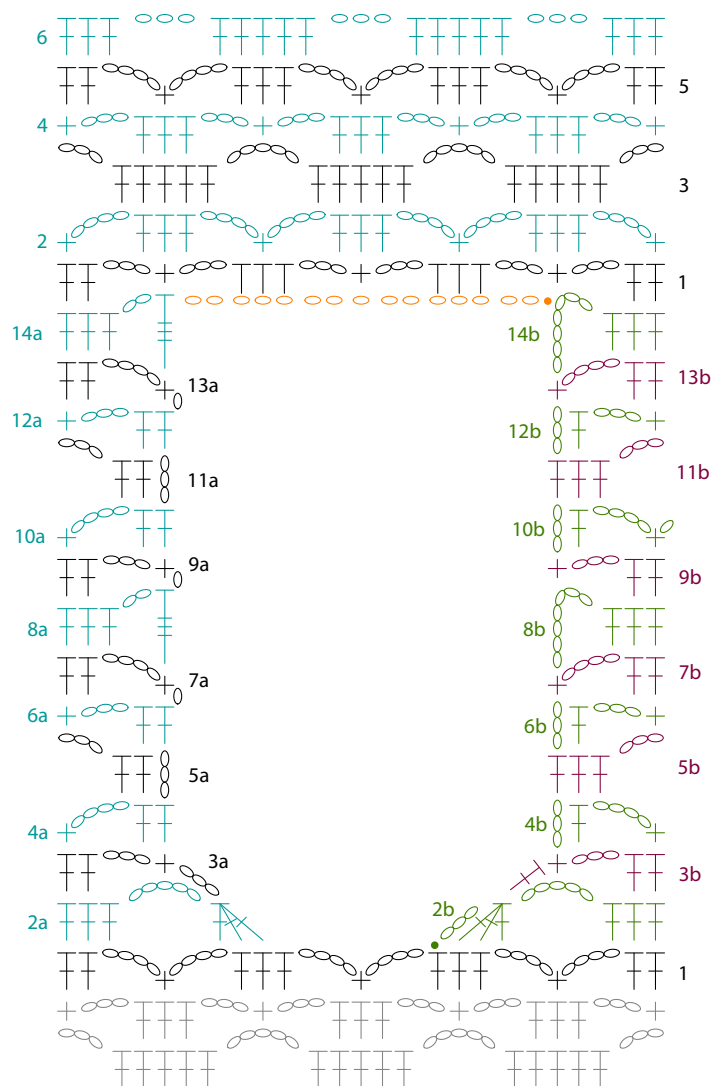
Rnd 3: Ch 1, *sc in ea dc across, 3 sc in middle dc of corner; rep from * around, sl st to first sc, do not turn.

Rnd 4: Sl st in ea sc around, fasten off.

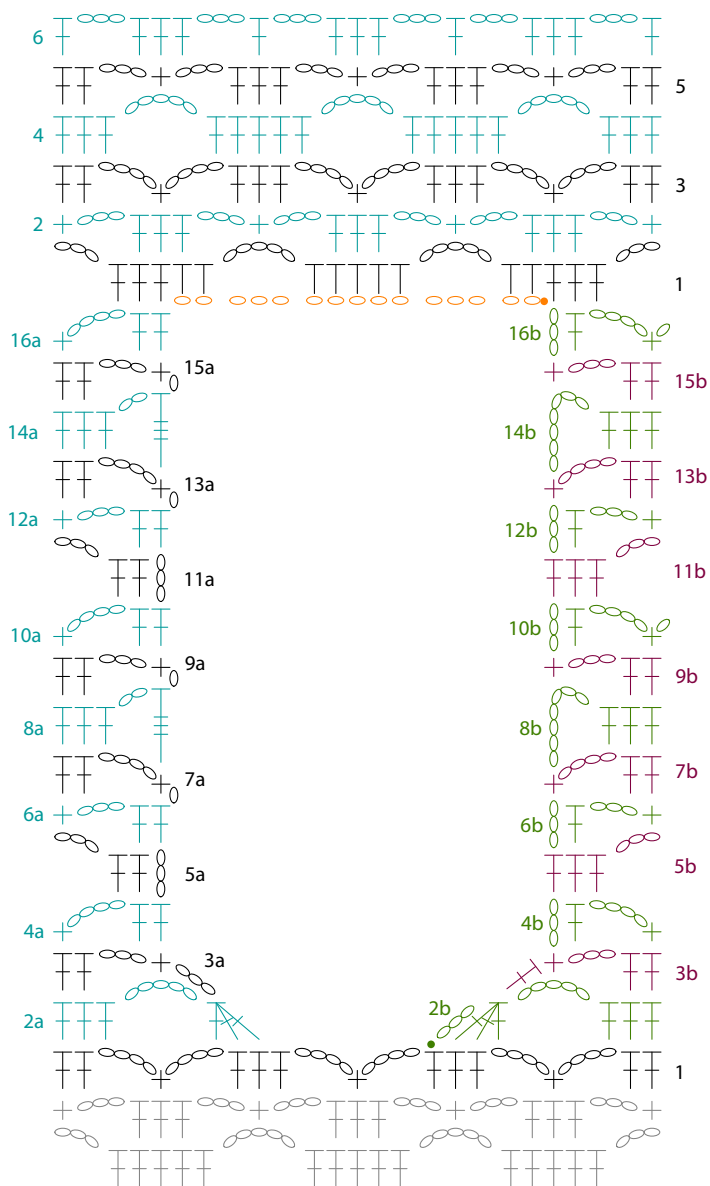
Armhole Edging: Join yarn to RS armhole edge with sl st

Rnd 1 (RS): Ch 1, sc evenly around edge, sl st to first sc, do not turn.

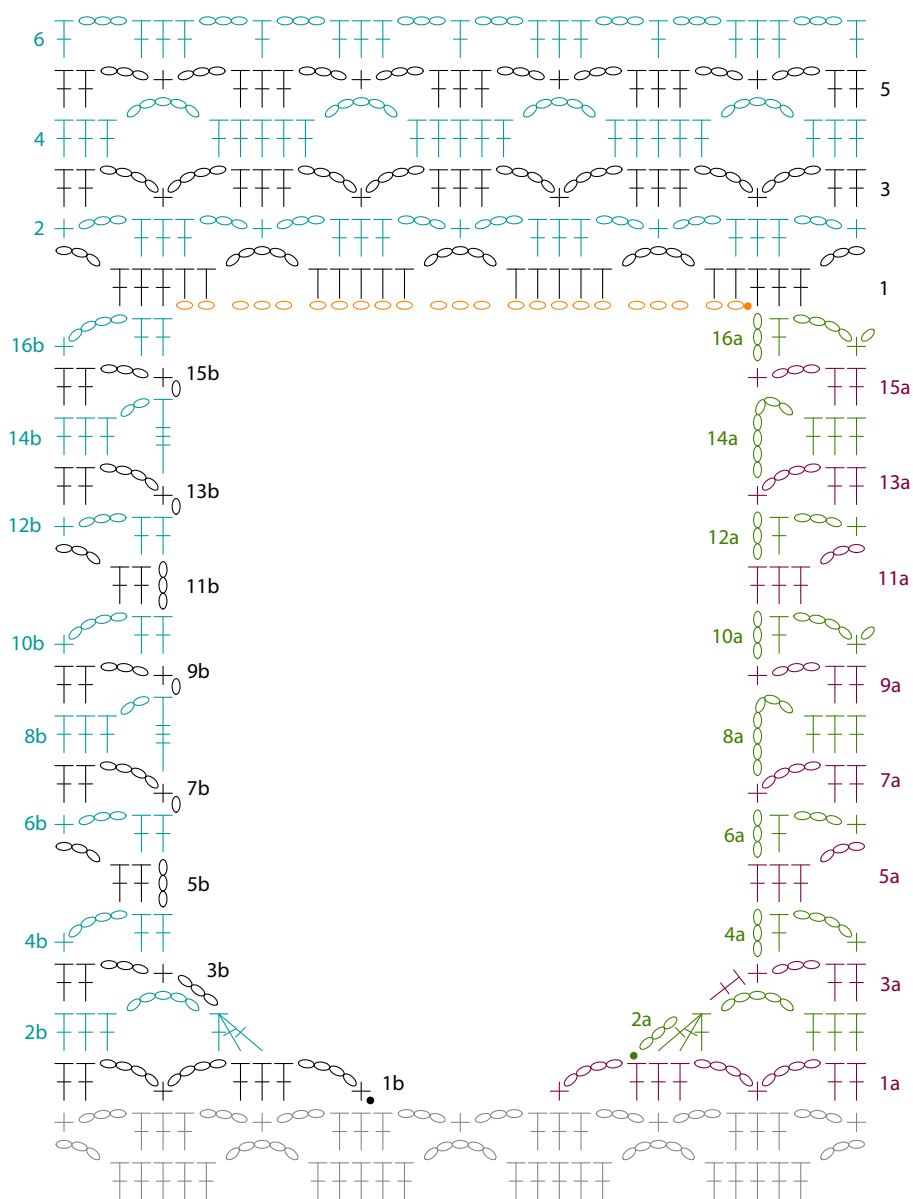
Rnd 2: Sl st to ea sc around, fasten off.



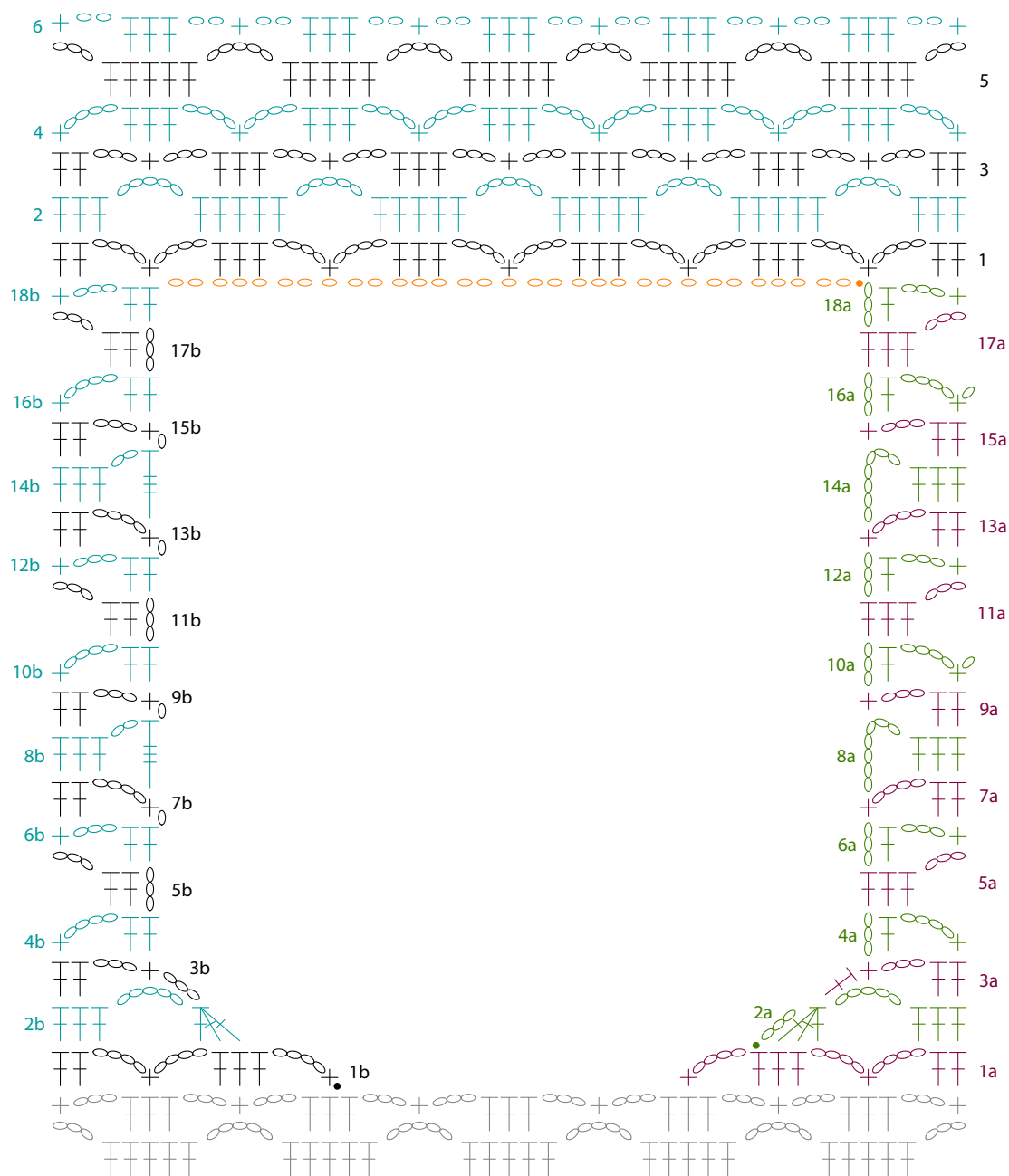
S/ M Armhole Shaping Diagram



L Armhole Shaping Diagram



XL Armhole Shaping Diagram



2X Armhole Shaping Diagram

ABBREVIATIONS & TERMS

Knit

beg: beginning
CC: contrasting color
cn: cable needle
cont: continue
dec: decrease
dpn: double pointed needles
est: established
inc: increase
K: knit
KSP: Knit 1, then slip stitch back to left hand needle, lift 2nd stitch on left hand needle back over returned stitch and replace returned stitch on RH needle (1 stitch decreased).
K2SP: Knit 2 together, then slip stitch back to left hand needle, lift second stitch on left hand needle back over returned stitch and replace returned stitch on right hand needle (2 stitches decreased).
LH: left hand
lp(s): loop(s)
LT2 (Left Twist): Skip 1 stitch, knit second stitch through back loop, then knit both stitches together through back loop
MC: main color
M1k: Pick up horizontal strand between stitch just worked and next stitch, place on left hand needle, knit this stitch (1 stitch increased).
M1p: Pick up horizontal strand between stitch just worked and next stitch, place on left hand needle, purl this stitch (1 stitch increased).
p: purl
pat(s): pattern(s)
pm: place marker
psso: pass slip stitch over knit stitch
p2sso: pass 2 slip stitches over knit stitch
rem: remaining
rep: repeat
RH: right hand
rnd(s): round(s)
RS: right side
RT2 (Right Twist): Knit 2 stitches together, leaving them on the left hand needle, then knit the first stitch again slipping both stitches to the right hand needle.
SKP: slip 1, knit 1, pass slip stitch over
sl: slip
SSK: Slip 2 stitches knitwise, insert point of left hand needle through fronts of these 2 stitches and knit 2 together.
st(s): stitch(es)

TBL: through back loop(s)
tog: together
WS: wrong side
wyib: with yarn in back
wyif: with yarn in front
yo: yarn over
end on WS: end having just completed a Wrong Side row.
end on RS: end having just completed a Right Side row
STOCKINETTE ST (St st): Knit 1 row, purl 1 row alternately when working on straight needles. The knit side is the right side of work. Knit EVERY round when working in the round on a circular needle. Reverse **St st (Rev St st):** Purl 1 row, knit 1 row alternately when working on straight needles. The purl side is the right side of the work. Purl EVERY round when working in the round on a circular needle.
GARTER ST: Knit EVERY row when working on straight needles. Knit 1 round, purl 1 round when working on a circular needle.

Crochet

bphdc (back post half double crochet): Yarn over, insert hook from back to front to back around post of half double crochet one row below, yarn over, draw up a loop, yarn over, draw through all 3 loops on hook (this is worked on even # or wrong side rows).
bptr (back post triple): Yarn over twice, insert hook from back to front around post of stitch on previous row and pull up a loop, (yarn over and draw through 2 loops on hook) 3 times.
ch: chain
dc: double crochet
fphdc (front post half double crochet): Yarn over, insert hook from front to back to front around post of half double crochet one row below, yarn over, draw up a loop, yarn over, draw through all 3 loops on hook (this is worked on odd # or right side rows)
fptr (front post triple): Yarn over twice, insert hook from front to back around post of stitch on previous row and pull up a loop, (yarn over and draw through 2 loops on hook) 3 times.
hdc: half double crochet
hdctbl: Half double crochet worked in the back loop
hdctfl: Half double crochet worked in the front loop
sl st: slip stitch
sp: space
tr: treble