

Designed by Amy Christoffers



skill level: Easy
Shown in size 40½"

finished measurements

Bust – 37½(40½-43½-49½-52-58-61)"

Length – 24½(25-25½-25½-26-26-26½)"

Note: This garment was designed with approximately 6" of ease. Please take this into consideration when selecting your size.

materials

8(9-10-11-12-13-14) balls **BERROCO COLORA** (50 grs), #4845 Cloves

Straight knitting needles, sizes 4 (3.50 mm) and 6 (4.00 mm) OR SIZE TO OBTAIN GAUGE

16" length circular knitting needle, size 4 (3.50 mm)

1 st marker

gauge

21 sts and 28 rows = 4" in St st on larger needles

TO SAVE TIME, TAKE TIME TO CHECK GAUGE

Berroco Colora™

Find this Yarn 

NOTE: We recommend using yarns called for in our instructions. Every effort has been made to ensure that directions contained in this book are accurate and complete, however errors do occur. We cannot be responsible for variance of individual knitters, human or typographical errors.

All pattern PDFs are updated when corrections are made. In the event of finding an error, please make sure you've downloaded the most recent version.

BACK

With smaller straight needles, cast on 98(106-114-130-136-152-160) sts. Work even in Garter St for 2". Change to larger needles and work even, following chart, until piece measures 4" from beg, end on WS. Work even in St st until piece measures 16" from beg, end on WS. Mark beg and end of last row for beg of armholes. Work even until armholes measure 7½(8-8½-8½-9-9-9½)", end on WS. Mark center 36 sts on last row.

Shape Neck and Shoulders: Next Row (RS): Bind off 6(7-8-10-10-12-13), k to first marker, join another ball of yarn and bind off center 36 sts, k to end. Working both sides at once, bind off 6(7-8-10-10-12-13) sts at beg of the next row, then 5(6-7-9-10-12-13) sts at beg of the next 6 rows. AT THE SAME TIME, bind off 4 sts at each neck edge once, then 3 sts twice.

FRONT

Note: Pattern of front is different than on back; after Garter St edge, chart pattern goes all the way to shoulders instead of switching to St st.

With smaller straight needles, cast on 98(106-114-130-136-152-160) sts. Work even in Garter St for 2". Change to larger needles and work even, following chart, until piece measures 16" from beg, end on WS. Mark beg and end of last row for beg of armholes. Work even until armholes measure 4½(5-5½-5½-6-6-6½)", end on WS.

Shape Neck: Next Row (RS): Work 38(42-46-54-57-65-69) sts, join another ball of yarn and bind off center 22 sts, work to end. Working both sides at once, bind off 3 sts at each neck edge 3 times, then bind off 2 sts at each neck edge 4 times – 21(25-29-37-40-48-52) sts each side. Work even until armholes measure 7½(8-8½-8½-9-9-9½)", end on WS. Bind off 6(7-8-10-10-12-13) sts at each armhole edge once, then 5(6-7-9-10-12-13) sts 3 times for shoulders.



Sew shoulder seams.

SLEEVES

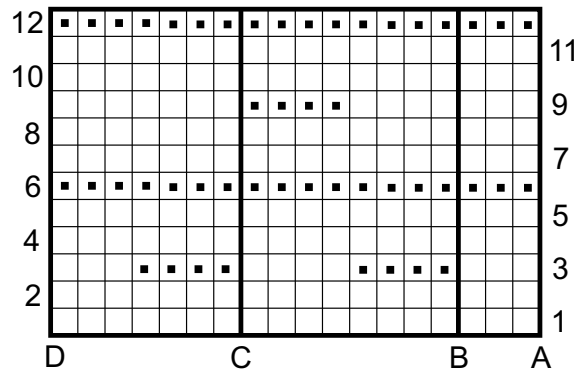
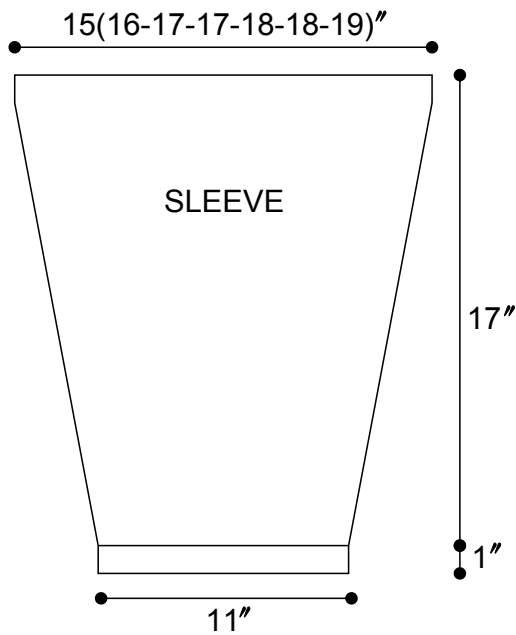
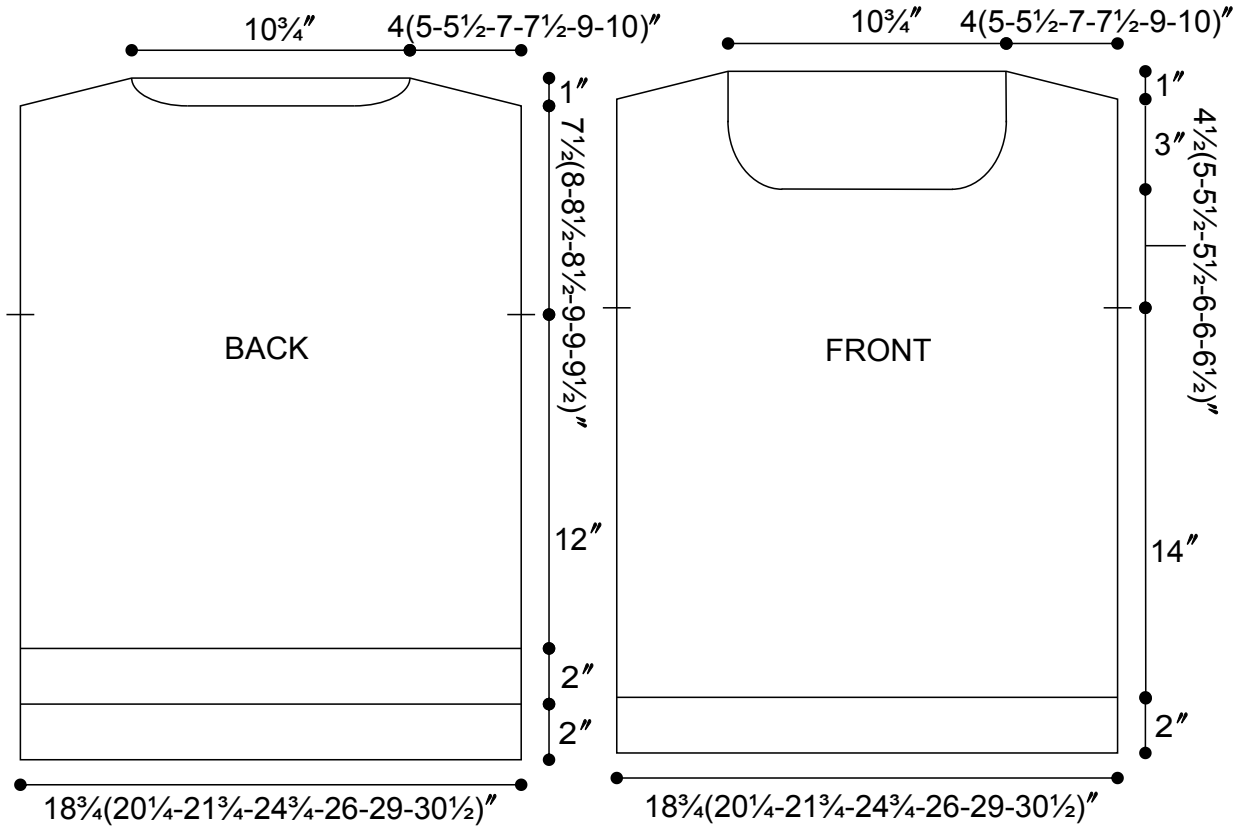
With RS facing, using larger needles, pick up and knit 78(84-89-94-94-99) sts along entire armhole edge between markers. Beg with a purl row, work even in St st for 1", end on WS.

Dec Row (RS): K2, k2tog, knit to last 4 sts, SSK, k2 – 2 sts dec'd. Rep Dec Row every 1½(1¼-1-1-¾-¾-¾)" 9(12-14-14-17-17-19) times more – 58(58-59-59-58-58-59) sts. Work even until sleeve measures 17" from beg, end on WS. Change to smaller straight needles and work even in Garter St for 1", end on WS. Bind off.

FINISHING

Sew side and sleeve seams.

Neckband: With RS facing, using circular needle, beg at left shoulder seam, pick up and knit 120 sts around entire neck edge. Pm and join for working in the round. Work even in Garter St (knit 1 rnd, purl 1 rnd) for 1", end with a purl rnd. Bind off knitwise.



KEY TO CHART

- K on RS, p on WS
- P on RS, k on WS

CHART NOTES

On RS, beg at A, work to C, rep between B and C, end at D.
 On WS, beg at D, work to B, rep between C and B, end at A.

ABBREVIATIONS & TERMS

Knit

beg: beginning
CC: contrasting color
cdd (centered double decrease): Slip 2 together, knit 1, pass the 2 slipped stitches over.
cn: cable needle
cont: continue
dec: decrease
dpn: double pointed needles
est: established
inc: increase
K: knit
k tbl: knit through the back loop(s)
k2tog: Knit 2 stitches together
k3tog: Knit 3 stitches together
LH: left hand
MC: main color
M1: Pick up horizontal strand between stitch just worked and next stitch from front to back, place on left hand needle, knit this stitch through the back (1 stitch increased).
M1L: Work as for M1.
M1p: Pick up horizontal strand between stitch just worked and next stitch from front to back, place on left hand needle, purl this stitch through the back (1 stitch increased).
M1pL: Work as for M1p.
M1pR: Pick up horizontal strand between stitch just worked and next stitch from back to front, place on left hand needle, purl this stitch through the front (1 stitch increased).
M1R: Pick up horizontal strand between stitch just worked and next stitch from back to front, place on left hand needle, knit this stitch through the front (1 stitch increased).
p: purl
p tbl: purl through the back loop(s)
pat(s): pattern(s)
pm: place marker
pssso: pass slip stitch over knit stitch
p2tog: purl 2 stitches together
p2sso: pass 2 slip stitches over knit stitch
p3tog: purl 3 stitches together
rem: remaining
rep: repeat
RH: right hand
rnd(s): round(s)
RS: right side
sl: slip
sm: slip marker

SSK: Slip 2 stitches knitwise, insert point of left hand needle through fronts of these 2 stitches and knit 2 together.
SSP: Slip 2 stitches knitwise, transfer these 2 stitches back to left hand needle, purl 2 together through the back loops.
st(s): stitch(es)
TBL: through back loop(s)
tog: together
WS: wrong side
wyib: with yarn in back
wyif: with yarn in front
yo: yarn over
end on WS: end having just completed a Wrong Side row.
end on RS: end having just completed a Right Side row
STOCKINETTE ST (St st): Knit 1 row, purl 1 row alternately when working on straight needles. The knit side is the right side of work. Knit EVERY round when working in the round on a circular needle.
Reverse St st (Rev St st): Purl 1 row, knit 1 row alternately when working on straight needles. The purl side is the right side of the work. Purl EVERY round when working in the round on a circular needle.
GARTER ST: Knit EVERY row when working on straight needles. Knit 1 round, purl 1 round when working on a circular needle.

Crochet

ch: chain
dc: double crochet
hdc: half double crochet
sc: single crochet
sl st: slip stitch
sp: space
tr: treble