

Fountain

Designed by the Berroco Design Team



skill level Intermediate
Shown in size 40"

finished measurements

Bust – 36 (40, 44, 48, 52, 56, 60)"
Length – 23 (23½, 24, 24½, 25, 25½, 26)"

Note: This garment was designed with approximately 6" of ease. Please take this into consideration when selecting your size.

yarn

BERROCO VINTAGE (100 grs): 4 (5, 5, 6, 6, 7, 7) hanks #5199 Sage

needles and notions

Straight needles, size 8 (5.00 mm) or size to obtain gauge

16" circular needle, size 8 (5.00 mm)
2 st markers

gauge

18 sts and 24 rows = 4" in St st
To save time, take time to check gauge



Berroco Vintage®

Find this Yarn 

 **BERROCO**[®]
www.berroco.com



NOTE: We recommend using yarns called for in our instructions. Every effort has been made to ensure that directions contained in this book are accurate and complete, however errors do occur. We cannot be responsible for variance of individual knitters, human or typographical errors.

All pattern PDFs are updated when corrections are made. In the event of finding an error, please make sure you've downloaded the most recent version.

NOTE

The back raglan armholes of this garment are 1" longer than the front raglan armholes. The decs at the 2 edges of the sleeve cap are worked differently so that they match up with the back and front (see schematic).

BACK

Cast on 81 (91, 99, 109, 117, 127, 135) sts.

Establish Charts: Set-up Row (WS): Work Set-up Row of Lace Panel B over 9 sts, pm, k1, * p1, k1, rep from * to last 9 sts, pm, work Set-up Row of Lace Panel A to end.

Row 1 (RS): Work Row 1 of Lace Panel A to first marker, sm, p1, * k1, p1, rep from * to last marker,



sm, work Row 1 of Lace Panel B to end. Work even in pattern as established until piece measures 1" from beginning, end on WS. At this point, eliminate ribbing between markers and work these sts in St st while continuing to work Lace Panels on each side as before. Work even in patten as established until piece measures 14" from beginning, end on WS.

Note: Stop working Lace Panels at each edge at this point and work all sts in St st.

Shape Raglan Armholes: Bind off 4 (5, 5, 6, 6, 7, 7) sts at beg of the next 2 rows – 73 (81, 89, 97, 105, 113, 121) sts.

For Sizes 40, 44, 48, 52, 56, and 60" ONLY:

Dec Row 1 (RS): K1, k2tog, knit to last 4 sts, sl 1, k2tog, pssso, k1 – 4 sts dec'd. Rep Dec Row 1 every RS row X (0, 3, 5, 8, 10, 13) times more, end on WS – X (77, 73, 73, 69, 69, 65) sts.

For ALL Sizes: Dec Row 2 (RS): K1, k2tog, knit to last 3 sts, SSK, k1 – 2 sts dec'd. Rep Dec Row 2 every RS row 22 (24, 22, 22, 20, 20, 18) times more, end on WS. Bind off remaining 27 sts for back neck.

FRONT

Work as for back until piece measures 14" from beginning and sts have been bound off for armholes – 73 (81, 89, 97, 105, 113, 121) sts.

For Sizes 44, 48, 52, 56, and 60" ONLY:

Dec Row 1 (RS): K1, k3tog, knit to last 4 sts, sl 1, k2tog, pssso, k1 – 4 sts dec'd. Rep Dec Row 1 every RS row X (X, 1, 3, 6, 8, 11) times more, end on WS – X (X, 81, 81, 77, 77, 73) sts.

For ALL Sizes: Dec Row 2 (RS): K1, k2tog, knit to last 3 sts, SSK, k1 – 2 sts dec'd. Rep Dec Row 2 every RS row 15 (20, 21, 21, 19, 19, 17) times more, then every 4th row 2 (1, 0, 0, 0, 0) time(s), end on WS. Bind off remaining 37 sts for front neck.

LEFT SLEEVE

Cast on 39 (41, 41, 41, 43, 43, 45) sts.

Ribbing: Row 1 (RS): K1, * p1, k1, rep from * across.

Row 2: P1, * k1, p1, rep from * across. Rep these 2 rows until sleeve measures 2½" from beginning, end on WS. Work even in St st until sleeve measures 3" from beg, end on WS.



Inc Row (RS): K1, M1R, work to last st, M1L, k1 – 2 sts inc'd. Rep Inc Row every 10 (8, 6, 6, 4, 4, 4)th row 8 (10, 12, 14, 15, 18, 17) times more – 57 (63, 67, 71, 75, 81, 81) sts. Work even until sleeve measures 18" from beginning, end on WS.

Shape Raglan Cap: Bind off 4 (5, 5, 6, 6, 7, 7) sts at beg of the next 2 rows – 49 (53, 57, 59, 63, 67, 67) sts.

Note: Please read through this next section carefully before starting to knit. The decreases at each edge of sleeve cap are worked at different intervals and you will need to keep track of them separately.

Dec Row (RS): K1, k2tog, knit to last 3 sts, SSK, k1 – 2 sts dec'd. Working decs in this manner, dec 1 st at the beginning of every RS row 16 (17, 20, 20, 23, 25, 24) times more, then every 4th row 3 (4, 3, 4, 3, 3, 4) times. AT THE SAME TIME, dec 1 st at the end of every RS row 19 (20, 23, 23, 26, 28, 27) times more, then every 4th row 0 (1, 0, 1, 0, 0, 1) time(s). When all decs at end of rows have been completed, continue to dec at beginning of rows as noted above. AT THE SAME TIME, bind off 3 sts at beginning of the next 3 WS rows, slipping the first st of each group of bound-off sts to minimize jagged edge.

RIGHT SLEEVE

Work as for left sleeve until sts have been bound off for raglan armhole, end on WS – 49 (53, 57, 59, 63, 67, 67) sts.

Dec Row 1 (RS): K1, k2tog, knit to last 3 sts, SSK, k1 – 2 sts dec'd. Working decs in this manner, dec 1 st at the end of every RS row 16 (17, 20, 20, 23, 25, 24) times more, then every 4th row 3 (4, 3, 4, 3, 3, 4) times. AT THE SAME TIME, dec 1 st at the beginning of every RS row 19 (20, 23, 23, 26, 28, 27) times more, then every 4th row 0 (1, 0, 1, 0, 0, 1) time(s). When all decs at beginning of rows have been completed, continue to dec at end of rows as noted above. AT THE SAME TIME, bind off 3 sts at beginning of the next 3 RS rows, slipping the first st of each group of bound-off sts to minimize jagged edge.

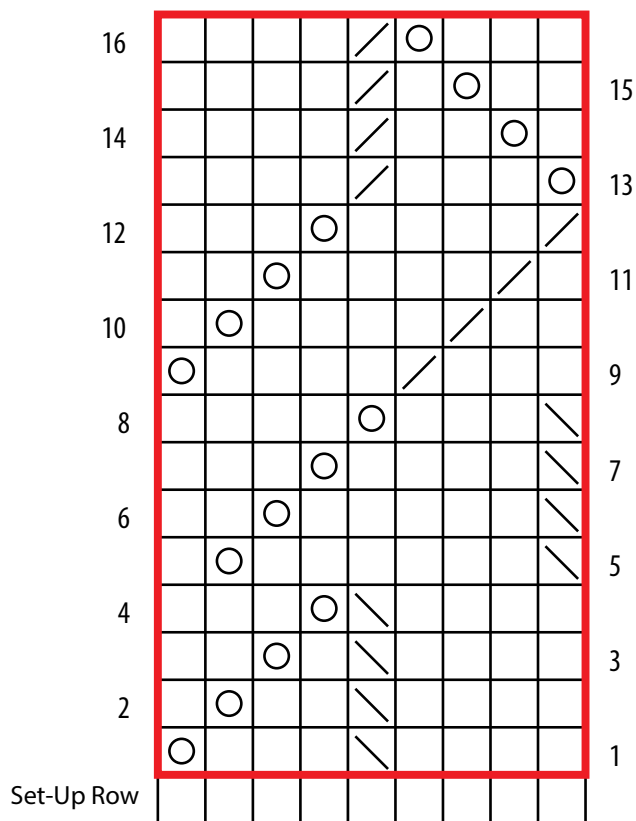
FINISHING

Sew raglan sleeve caps to raglan armholes. Sew side and sleeve seams.

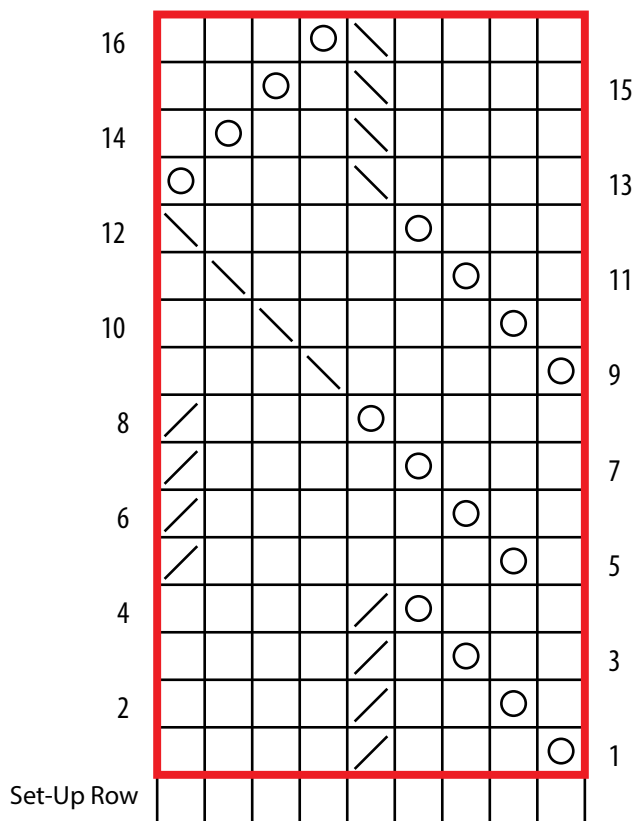
Neckband: With RS facing, using circular needle, beginning at left back raglan seam, pick up and knit 1 st in each around neckline as follows: 9 sts across top of left sleeve, 1 st in seam, 39 sts across front neck edge, 1 st in seam, 29 sts across back

neck edge, then 1 st in seam – 90 sts. Place marker and join for working in the round. Work even in k1, p1 ribbing for 3 rnds. Bind off loosely in ribbing. Weave in all ends and block as desired.

LACE PANEL B



LACE PANEL A

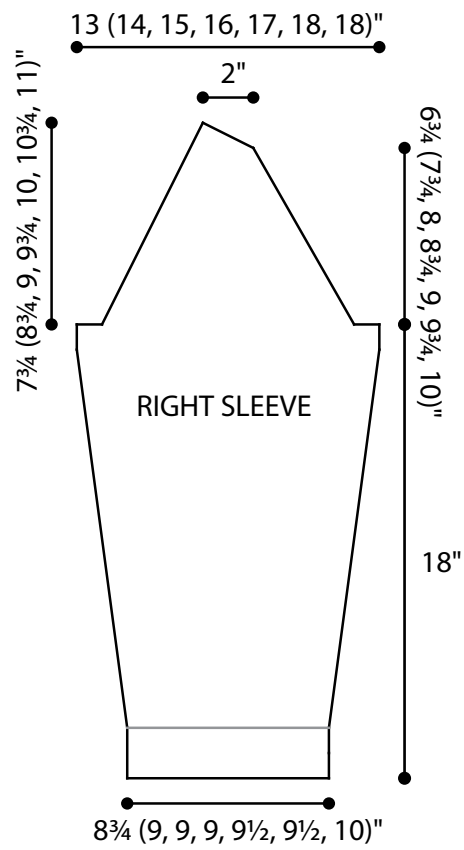
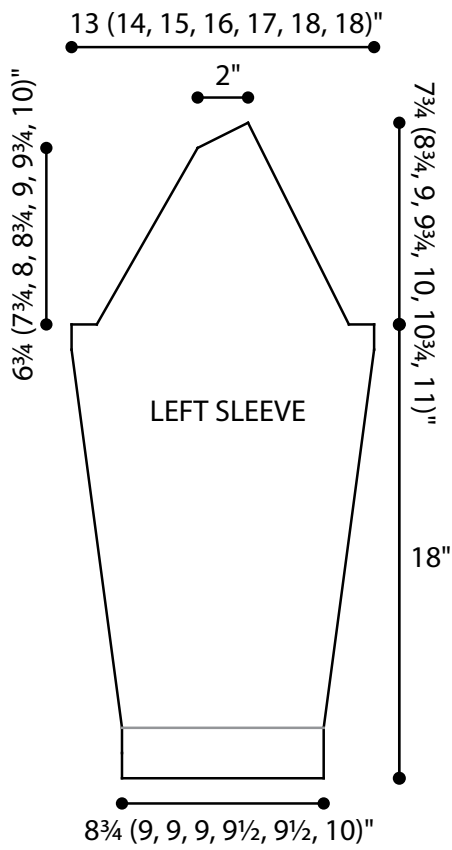
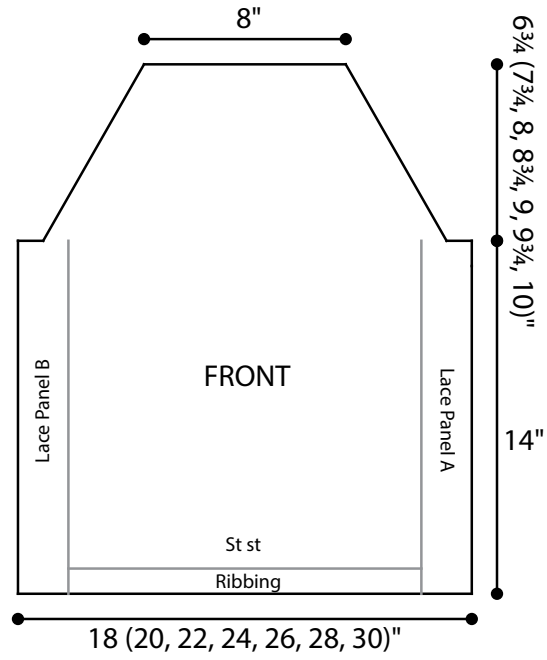
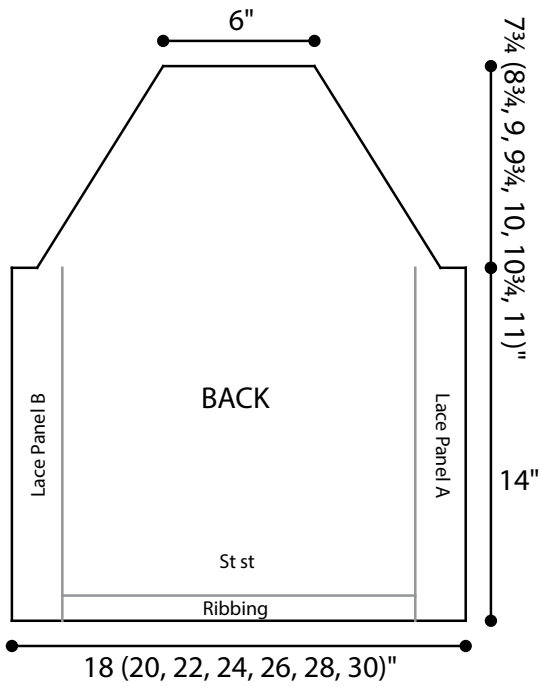


KEY TO CHARTS

- knit on RS; purl on WS
- yarn over
- k2tog on RS; p2tog on WS
- SSK on RS; SSP on WS
- pattern repeat

CHART NOTES

Work from right to left on RS rows and from left to right on WS rows.



STANDARD ABBREVIATIONS & TERMS

dec: decrease

end on WS: end having just completed a Wrong Side row.

end on RS: end having just completed a Right Side row

inc: increase

k: knit

k2tog: knit 2 stitches together

k3tog: knit 3 stitches together

M1L: Make 1—Pick up horizontal strand between stitch just worked and next stitch from front to back, place on left hand needle, knit this stitch through the back (1 stitch increased).

M1R: Make 1 Right—Pick up horizontal strand between stitch just worked and next stitch from back to front, place on left hand needle, knit this stitch through the front (1 stitch increased).

p: purl

p2tog: purl 2 stitches together

pm: place marker

pssso: pass slipped stitch over knit stitch

rep: repeat

RS: right side

sl: slip

sm: slip marker

SSK: Slip 2 stitches knitwise, insert point of left hand needle through fronts of these 2 stitches and knit 2 together.

SSP: Slip 2 stitches knitwise, transfer these 2 stitches back to left hand needle, purl 2 together through the back loops.

st(s): stitch(es)

St st: Stockinette Stitch—Knit 1 row, purl 1 row alternately when working back and forth in rows. The knit side is the right side of work. Knit EVERY round when working in the round.

WS: wrong side

Love Berroco patterns?
Sign up for our *KnitBits*® newsletter.

