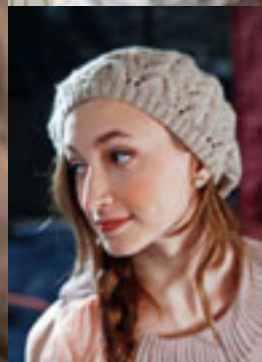
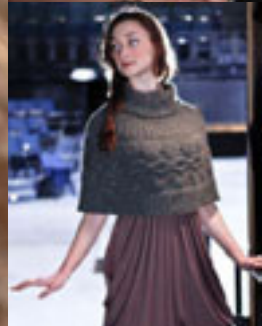


Berroco Flicker™

FREE PATTERNS

 BERROCO®



Berroco Flicker™

Affordable indulgence - this unbelievably lofty and luxurious baby alpaca chainette is infused with super soft glittering strands.



Learn more about [Berroco Flicker™](#)



Find your [next project](#)



FREE weekly e-newsletter [KnitBits®](#)



loken | crocheted in Berroco Flicker™



Ioken

Skill level: Experienced
One size

FINISHED MEASUREMENTS

Approximately 26" around top edge x 39" around lower edge x 17" high

MATERIALS

3 Hanks **BERROCO FLICKER** (50 grs), #3305 Siegfried

Crochet hooks, sizes 3.75 mm (F-5) and 4.00 mm (G-6) OR SIZE TO OBTAIN GAUGE

Tapestry needle

GAUGE

Square Motif (top row) = 3½" across after steaming

TO SAVE TIME, TAKE TIME TO CHECK GAUGE

NOTE

We suggest that you steam each motif as you work it. This makes it easier to see all the loops when you are joining motifs together. When working Medallion Frames (these join medallions to square motifs), it is easier to work with pieces on a flat surface. Be careful not to twist motifs and medallions as you are joining them.

STITCH GLOSSARY

Picot

(After working ch 3), sl st in front loop of last sc

SQUARE MOTIF (top row)

Wrap yarn twice around your little finger to form a ring, leaving a 2" tail to tighten the ring after first rnd has been completed. Use smaller crochet hook.

Rnd 1: Sc into ring, * ch 10, sc into ring, ch 8, sc into ring, rep from * 3 times more. DO NOT turn. Fasten off and pull 2" tail to tighten ring.

Rnd 2: * Work (sc, ch 6, sc, ch 8, sc, ch 6, sc) all in a ch-10 loop, ch 4, sc in next ch-8 loop, ch 4, rep from * 3 times more, beginning each rep in the next ch-10 loop, join with a sl st in beg sc.

Rnd 3: * Ch 8, sc into middle ch-8 loop, ch 3, picot, ch 8, sc in sc on the left side of the next ch-6 loop, ch 6, sc in next sc, ch 8, sc in same st, ch 6, sc in next sc, rep from * 3 times more, end last rep sl st in beg sc of Rnd 2 instead of sc in next sc. Fasten off.

ADJOINING SQUARE MOTIF (top row)

Work same as Square Motif until Rnd 2 has been completed.

Rnd 3: * Ch 8, sc into middle ch-8 loop, ch 3, picot, ch 8, sc in sc on the left side of the next ch-6 loop, ch 6, sc in next sc, ch 8, sc in same sc, ch 6, sc in next sc, rep from * twice more; ch 8, sc into middle ch-8 loop, ch 2, pick up first square motif and insert hook into the middle of a picot from the underside of the work, yo, pull through picot and loop on hook; sl st in front loop of of last sc, ch 8, sc in sc on the left side of the next ch-6 loop, ch 6, sc in next sc, ch 8, sc in same sc, ch 6, join with a sl st in first sc of Rnd 2. Fasten off. Make 6 more Adjoining Square Motifs in this manner, connecting each to the opposite picot from the last joining. You will have a straight line of 8 square motifs joined to each other at one corner.

SQUARE MOTIF (bottom row)

Using larger crochet hook, work same as Adjoining Square Motif (top row), joining to bottom picot of first square in top row.

ADJOINING SQUARE (bottom row)

Using larger crochet hook, work same as Square Motif (top row) until Rnd 2 has been completed.

Rnd 3: * Ch 8, sc into middle ch-8 loop, ch 3, picot, ch 8, sc in sc on the left side of the next ch-6 loop, ch 6, sc in next sc, ch 8, sc in same sc, ch 6, * sc in next sc; ch 8, sc into middle ch-8 loop, ch 2, then insert hook from the underside into the middle of the picot on the left side of last square made (on bottom row), yo, pull through picot and loop on hook, sl st in front loop of last sc, ch 8; sc in sc on the left side of the next ch-6 loop, ch 6, sc in next sc, ch 8, sc in same sc, ch 6, sc in next sc, ch 8, sc into middle ch-8 loop, ch 2, insert hook from the underside into the middle of the picot on the bottom of next square in top row, yo, pull through picot and loop on hook, sl st in front loop of last sc, ch 8, sc in sc on the left side of the next ch-6 loop, ch 6, sc in next sc, ch 8, sc in same sc, ch 6, sc in next sc, rep between *'s once more, join with a sl st in beg sc of Rnd 2. Fasten off. Make 6 more Adjoining Square Motifs in this manner, joining each one to the left picot of the preceding motif and to the bottom picot of the next motif on the top row. You will have a flat piece consisting of 16 motifs (2 rows of 8) joined at the picots. Using a tapestry needle and yarn, sew the free picots of the first and last motifs on each row together forming capelet. Mark top and bottom edges of capelet.

MEDALLIONS (Make 8)

Using smaller crochet hook, ch 14, join with a sl st to form a ring.

Rnd 1: Work 15 sc's into ring. Join with a sl st in beg sc.

Rnd 2: Ch 15, sl st in 8th sc of Rnd 2, ch 5, sl st in same sc, ch 15, join with a sl st in last sl st of Rnd 1.

Rnd 3: Ch 32, join with a sl st in last sl st of Rnd 2.

Rnd 4: Sc into ch-32 loop, ch 9, 4 sc into ch-32 loop, * ch 3, 4 sc into ch-32 loop, ch 10, sc into ch-32 loop, ch 18, sc into ch-32 loop, ch 10, 4 sc into ch-32 loop; ch 3, * 5 sc into ch-32 loop, ch 9, insert hook into ch-5 loop from Rnd 3 and ch-32 loop held together and sc, ch 14, sc into both loops again, ch 9, 5 sc into ch-32 loop; rep between *'s once more; 4 sc into ch-32 loop, ch 9, sc in last sl st of Rnd 3, ch 14, sc back in same st, join with a sl st in beg sc. Fasten off. Mark the last ch-14 worked as the bottom point of the medallion, marked A.

MEDALLION FRAMES

Note: These will be worked into the spaces between the 2 rows of square motifs, joining the medallions to the square motifs.

Hold capelet with top edge at the top. Using smaller crochet hook, beg in the 1st ch of the ch-8 space on the left hand side of A- see diagram. * Sl st in the front loop of the next 8 ch's, sl st in both loops of the next sc, sl st in the front loops of the next 6 ch's, sl st in both loops of sc at base of ch-8 loop; 3 sc, sl st into ch-8 loop, * remove st from hook, pick up a medallion and insert hook into the first ch-3 loop to the left of marker and back in st just removed from hook, pull st through ch-3 loop, ch 1, sl st back into ch-8 loop. 3 sc into remainder of ch-8 loop, sl st in both loops of sc at base of ch-8 loop; Sl st in the front loops of next 6 ch's, sl st in both loops of next sc, sl st in front loops of next 8 ch's, insert hook in a loop on the side edge of this picot and the one joined to it, yo and pull through all 3 loops on hook. Remove st from hook and insert hook in the back loop of 9th ch in the next ch-18 loop on left side of the medallion and back in st just removed from hook, pull st through 9th ch, ch 1. Rep from * 3 more times, working into the center ch of ch-14 and ch-18 loops. Sl st into beg ch. Fasten off. Repeat in the remaining 7 spaces of capelet, joining all medallions.

HALF MEDALLIONS (Make 8) see diagram

With smaller crochet hook, ch 10, join with a sl st to form a ring.

Row 1: Work 11 sc's into ring, leaving 2 ch's exposed. Turn.

Row 2: Ch 9, skip 5 sc's, sl st in next sc, ch 5, sl st back in same sc, ch 9, sl st in first sc of Rnd 1. Turn.

Row 3: Ch 18, sl st in back loop of 1st ch of Rnd 2. Turn.

Row 4: Sc into ch-1 loop, ch 16, sc into ch-18 loop, ch 9, 4 sc into ch-18 loop, ch 3, 5 sc into ch-18 loop, ch 9, insert hook into ch-5 loop from Rnd 2 and ch-18 loop held together and sc, ch 14, sc into both loops again, ch 9, 5 sc into ch-18 loop, ch 3, 4 sc into ch-18 loop, ch 9, sc into ch-18 loop, ch 16, sc into ch-18 loop. Fasten off.

HALF MEDALLION FRAMES

Note: These will be worked around the top edge of the

top row of Square Motifs on capelet joining half medallions to square motifs.

Insert smaller crochet hook in right side of a picot at the top of a square motif. * Yo and pull up a loop. Remove loop from hook and insert hook into the back loop of the 8th ch in the ch-16 loop on left side of a half medallion and back in loop just removed from hook, pull st through 8th ch, ch 1. Continue to sl st around the edges of 2 squares joining the half medallion the same way you attached the full size medallion, end with sl st, remove loop from hook and insert in back loop of the 8th ch of the remaining ch-16 loop of half medallion and back in loop just removed from hook, pull st through 8th ch, ch 1. Insert hook in loop on the other side of picot, sl st. Rep from * around top edge of capelet until all half medallions have been joined. DO NOT fasten off.

COWL

Rnd 1: Sl st in middle of last picot you worked into, ch 1, sc in same st. * Ch 12, sc into exposed 2 ch's from Rnd 1 of the next half medallion, ch 12, sc into middle of next picot. Rep from * around, join with a sl st in beg sc.

Rnds 2 and 3: Ch 1, sc in same st, ch 12, * sc in next sc, ch 12, rep from * around, join with a sl st in first sc.

Rnds 4 – 6: Ch 1, sc in same st, ch 11, * sc in next sc, ch 11, rep from * around, join with a sl st in first sc.

Rnds 7 – 9: Ch 1, sc in same st, ch 10, * sc in next sc, ch 10, rep from * around, join with a sl st in first st.

Rnds 10 – 12: Ch 1, sc in same st, ch 9, * sc in next sc, ch 9, rep from * around, join with a sl st in first sc.

Rnds 13 – 15: Ch 1, sc in same st, ch 8, * sc in next sc, ch 8, rep from * around, join with a sl st in first sc.

Rnds 16 – 18: Ch 1, sc in same st, ch 9, * sc in next sc, ch 9, rep from * around, join with a sl st in first sc.

Rnds 19 – 21: Ch 1, sc in same st, ch 10, * sc in next sc, ch 10, rep from * around, join with a sl st in first sc.

Rnds 22 – 36: Ch 1, sc in same st, ch 11, * sc in next sc, ch 11, rep from * around, join with a sl st in first sc. Turn.

Cowl Edging: With WS facing, using smaller crochet hook, sl st in same st, * work 10 sc's over ch's from Rnds 36 and 35 held tog, sl st in next sc, rep from * around, join with a sl st in beg sl st. Fasten off.

BOTTOM EDGING

Note: This will be worked on the edges of the bottom row of square motifs.

With smaller crochet hook, beg just below the left hand

side of a free picot in the first ch of the ch-8. ** Sl st in this ch and in the next 7 ch's, * sl st in both loops of next sc, sl st in front loop of next 6 ch's, sl st in both loops of sc at base of ch-8 loop, 7 sc into ch-8 loop; sl st in both loops of sc at base of ch-8 loop, sl st in front loop of next 6 ch's, sl st in both loops of next sc, sl st in front loop of next 8 ch's. * Insert hook in middle of joined picot, sl st, ch 17, sl st back in middle of picots, ch 24, sl st in middle of picots, ch 17, sl st in middle of picots, sl st in front loop of next 8 ch's. Rep between *'s once, sl st in loop of this side of the picot, ch 5, sl st in a loop on opposite side of picot. Rep from ** around, join with a sl st. Fasten off.





nansen

Skill level: Intermediate
One size

FINISHED MEASUREMENTS

Approximately 48" around x 21" high

MATERIALS

6 Hanks **BERROCO FLICKER** (50 grs), #3307 Rothbart

Straight knitting needles, size 9 (5.50 mm) OR SIZE TO OBTAIN GAUGE

24" Length circular knitting needles, sizes 7 (4.50 mm), 8 (5.00) mm and 9 (5.50 mm)

Cable needle (cn)

1 St marker

GAUGE

48 sts = 7"; 20 rows = 2¾" in charted pat on larger needles

TO SAVE TIME, TAKE TIME TO CHECK GAUGE

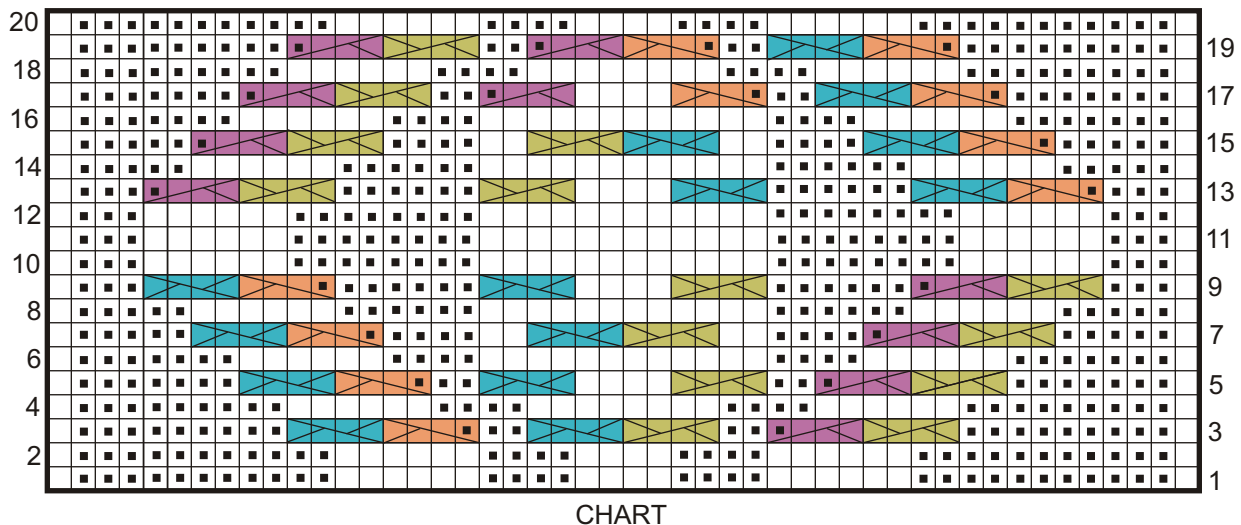
BODY

With straight needles, cast on 48 sts. Work even, following chart, for 48", end on WS. Bind off. Sew cast-on and bound-off edges together.

Lower Ribbing: With RS facing, using size 7 circular needle, beg at seam, pick up and k320 sts around one long edge of body. Mark for beg of rnd and carry marker up. Purl 1 rnd, knit 1 rnd, then work even in k2, p2 ribbing for 3". Bind off loosely in ribbing.

Collar: With RS facing, using size 9 circular needle, beg at seam, pick up and k220 sts around the other long edge of body. Mark for beg of rnd and carry marker up. Purl 1 rnd, knit 1 rnd, then work even in k2, p3 ribbing for 6 rnds. Change to size 8 circular needle and work even in k2, p3 ribbing for 6 rnds. Change to size 7 circular needle and work even in k2, p3 ribbing for 6 rnds.

Dec Rnd: * K2, p1, p2 tog, rep from * around – 176 sts. Work even in k2, p2 ribbing until piece measures 3" from picked-up sts. Mark for beg of collar. Work even in k2, p2 ribbing for 8". Bind off loosely in ribbing.



KEY TO CHART

- K on RS, p on WS
- P on RS, k on WS
- SI 2 sts to cn and hold in BACK, k2, k2 from cn
- SI 2 sts to cn and hold in BACK, k2, p2 from cn
- SI 2 sts to cn and hold in FRONT, k2, k2 from cn
- SI 2 sts to cn and hold in FRONT, p2, k2 from cn

HOW TO USE CHART

Work RS rows from right to left.
 Work WS rows from left to right.

gurie | knit in Berroco Flicker™



gurie

Skill level: Intermediate

One size

FINISHED MEASUREMENTS

Approximately 6" at widest point x 39" (blocked measurements)

MATERIALS

1 Hank **BERROCO FLICKER** (50 grs), #3312 Odile

Straight knitting needles, size 9 (5.50 mm) OR SIZE TO OBTAIN GAUGE

Spare knitting needle, size 9 (5.50 mm)

2 St holders

GAUGE

20 sts = 4"; 28 rows = 4" in St st

TO SAVE TIME, TAKE TIME TO CHECK GAUGE

NOTE 1

Jabot is made in 2 sections worked from outer edge to center, then joined using 3-needle bind-off at center back neck.

NOTE 2

Due to the nature of this pat, the number of sts will vary from row to row. The number given at the end of rows is the number of sts you will have after completing that row.

HALF JABOT (Make 2)

With straight needles, cast on 33 sts. Knit 1 row on WS.

Row 1 (RS): K2, yo, k2 tog, (yo) twice, SSK, * p1, yo, p2 tog, k1, yo, SSK, rep from * twice more, p1, yo, p2 tog, k2 tog, (yo) twice, SSK, yo, k2 – 35 sts.

Row 2: K3, p2, k1, p1, * k1, yo, SSK, p1, yo, p2 tog, rep from * twice more, k1, yo, SSK, p2, k1, p1, k3 – 35 sts.

Row 3: K3, yo, k2 tog, (yo) twice, SSK, * p1, yo, p2 tog, k1, yo, SSK, rep from * twice more, p1, yo, p2 tog, k2 tog, (yo) twice, SSK, yo, k3 – 37 sts.

Row 4: K4, p2, k1, p1, * k1, yo, SSK, p1, yo, p2 tog, rep from * twice more, k1, yo, SSK, p2, k1, p1, k4 – 37 sts.

Row 5: K4, yo, k2 tog, (yo) twice, SSK, * p1, yo, p2 tog, k1, yo, SSK, rep from * twice more, p1, yo, p2 tog, k2 tog, (yo) twice, SSK, yo, k4 – 39 sts.

Row 6: K5, p2, k1, p1, * k1, yo, SSK, p1, yo, p2 tog, rep from * twice more, k1, yo, SSK, p2, k1, p1, k5 – 39 sts.

Row 7: K5, yo, k2 tog, (yo) twice, SSK, * p1, yo, p2 tog, k1, yo, SSK, rep from * twice more, p1, yo, p2 tog, k2 tog, (yo) twice, SSK, yo, k5 – 41 sts.

Row 8: K6, p2, k1, p1, * k1, yo, SSK, p1, yo, p2 tog, rep from * twice more, k1, yo, SSK, p2, k1, p1, k6 – 41 sts.

Row 9: K4, k2 tog, yo, k2 tog, (yo) twice, SSK, * p1, yo, p2 tog, k1, yo, SSK, rep from * twice more, p1, yo, p2 tog, k2 tog, (yo) twice, SSK, yo, SSK, k4 – 41 sts.

Note: Be careful on the next row. The pat changes at this point – you will dec 7 sts and will work no yo's over this row.

Row 10: K6, p2, k1, p1, * k1, SSK, p1, p2 tog, rep from * twice more, k1, SSK, p2, k1, p1, k6 – 34 sts.

Rows 11 and 13: K4, k2 tog, yo, k2 tog, (yo) twice, SSK, k14, k2 tog, (yo) twice, SSK, yo, SSK, k4 – 34 sts.

Rows 12 and 14: K6, p2, k1, p1, k14, p2, k1, p1, k6 – 34 sts.

Row 15: K4, k2 tog, yo, k2 tog, (yo) twice, SSK, (k1, yo twice) 13 times, k1, k2 tog, (yo) twice, SSK, yo, SSK, k4 – 60 sts.

Row 16: K6, p2, k1, p1, with yarn in front (sl 1, drop double yo) 13 times (this makes 13 elongated sts), bring yarn to back and k1; one at a time, sl the 13 elongated sts over the st you just knit; p2, k1, p1, k6 – 21 sts.

Row 17: K6, yo, k2 tog, (yo) twice, SSK, * insert LH needle from front to back under the bar before next st and (k1, yo, k1) into that space, * k1, rep between *'s once more, k2 tog, (yo) twice, SSK, yo, k6 – 29 sts.

Row 18: K7, p2, k1, p4, yo, p1, yo, p5, k1, p1, k7 – 31 sts.

Row 19: K7, yo, k2 tog, (yo) twice, SSK, k9, k2 tog, (yo) twice, SSK, yo, k7 – 33 sts.

Row 20: K10, p1, k12, p1, k9 – 33 sts.

Rows 21 and 22: Knit.

Rep Rows 1 – 22 twice more, end on WS.

Shape End: Row 1 (RS): K2, k2 tog, (yo) twice, SSK, k2 tog, k to last 8 sts, SSK, k2 tog, (yo) twice, SSK, k2 – 31 sts.

Row 2: K2, p2, k1, p1, k to last 6 sts, p2, k1, p1, k2 – 31 sts. Rep the last 2 rows 8 times more (decreasing 2 sts on every RS row) – 15 sts.

Next Row (RS): K2, k2 tog, k to last 4 sts, SSK, k2 – 13 sts. Knit 1 row. Rep the last 2 rows once more – 11 sts. Knit 27 rows. Sl remaining 11 sts onto holder.

FINISHING

With needles pointing in the same direction, sl sts of one Half Jabot onto one needle and sts from the second Half Jabot onto the other needle. Join yarn.

Bind-Off Row: * Insert point of spare needle into first st on front needle and first st on back needle and k these 2 sts tog; rep from *, then bind off first st. Continue to work in this manner until all sts on both needles are bound off. Fasten off and weave in ends.



viveca

Skill level: Intermediate

One size

FINISHED MEASUREMENTS

Approximately 22" around x 8" high

MATERIALS

2 Hanks **BERROCO FLICKER** (50 grs), #3310 Odette

Straight knitting needles, sizes 7 (4.50 mm) and 9 (5.50 mm) OR SIZE TO OBTAIN GAUGE

Tapestry needle

GAUGE

20 sts = 4"; 28 rows = 4" in Pat St on larger needles

TO SAVE TIME, TAKE TIME TO CHECK GAUGE

PATTERN STITCH

Note: Due to the nature of this pat st, the number of sts will vary from row to row. The number given after each row is the number of sts you will have after completing that row.

Row 1 (RS): K2, * yo, k8, yo, k1, rep from * to last st, end k1 – 135 sts.

Row 2: K3, * p8, k3, rep from * across.

Row 3: K3, * yo, k8, yo, k3, rep from * across – 159 sts.

Row 4: K4, * p8, k5, rep from * across, end last rep k4 instead of k5.

Row 5: K4, * yo, k8, yo, k5, rep from * across, end last rep k4 instead of k5 – 183 sts.

Row 6: K5, * p8, k7, rep from * across, end last rep k5 instead of k7.

Row 7: K5, * k4 tog TBL, k4 tog, k7, rep from * across, end last rep k5 instead of k7 – 111 sts.

Row 8: Knit.

Rep these 8 rows for Pat St.

HAT

With smaller needles, cast on 111 sts.

Ribbing: Row 1 (RS): K1, * p1, k1, rep from * across.

Row 2: P1, * k1, p1, rep from * across. Rep these 2 rows 3 times more. Change to larger needles and work even in Pat St until 5 repeats have been completed (40 rows), then work Rows 1 – 4 of Pat St once more, end on WS – 159 sts.

Shape Top: Row 1: Knit.

Row 2: K4, * p8, k5, rep from * across, end last rep k4 instead of k5.

Row 3: K4, * k4 tog TBL, k4 tog, k5, rep from * across, end last rep k4 instead of k5 – 87 sts.

Row 4: Knit.

Row 5: K2, * yo, k6, yo, k1, rep from * to last st, end k1 – 111 sts.

Row 6: K3, * p6, k3, rep from * across.

Row 7: Knit.

Row 8: Rep Row 6.

Row 9: Knit.

Row 10: Rep Row 6.

Row 11: K3, * k3 tog TBL, k3 tog, k3, rep from * across – 63 sts.

Row 12: Knit.

Row 13: K1, k2 tog, k2, k2 tog, * k3, k2 tog, rep from * to last st, end k1 – 50 sts.

Row 14: * K2, p2, rep from * to last 2 sts, end k2.

Row 15: K1, * k2 tog, SSK, rep from * to last st, end k1 – 26 sts.

Row 16: Rep Row 15 – 14 sts. Break off yarn leaving an 18" long end. Thread end into tapestry needle and draw through all sts on needle. Pull up tightly and secure. Sew back seam.

toren | knit in Berroco Flicker™



toren

Skill level: Easy

One size

FINISHED MEASUREMENTS

Approximately 7" around x 12" long (unstretched)

MATERIALS

2 Hanks **BERROCO FLICKER** (50 grs), #3317 Benno

1 Set (4) double pointed knitting needles (dpns), size 7 (4.50 mm) OR SIZE TO OBTAIN GAUGE

4 St markers (1 a different color)

GAUGE

22 sts = 4"; 38 rnds = 4" in Seed St

TO SAVE TIME, TAKE TIME TO CHECK GAUGE

GAUNTLETS (Make 2)

With dpn's, cast on 50 sts. Divide sts onto 3 needles and join, being careful not to twist sts. Mark for beg of rnd with different colored marker and carry marker up.

Establish Pat St: Rnd 1: (P2, k2) twice, place marker, k1, (p1, k1) 5 times, place marker, k2, (p2, k2) 3 times, k1, (p1, k1) 5 times, place marker, k2, p2, k2.

Rnd 2: (P2, k2) twice, sl marker, p1, (k1, p1) 5 times, sl marker, k2, (p2, k2) 3 times, sl marker, p1, (k1, p1) 5 times, sl marker, k2, p2, k2. Rep these 2 rnds until piece measures 3" from beg.

Divide for Thumb Opening: Next Rnd: Bind off 2 sts, work to end – 48 sts. Turn. From here, work back and forth in pat as established for 1", end on WS.

Joining Rnd: Cast on 2 sts, work to end – 50 sts. Work even in pat as established until piece measures 12" from beg. Bind off.

taina | knit in Berroco Flicker™



taina

Skill level: Intermediate
Shown in size Small

SIZES

Directions are for women's size X-Small. Changes for sizes Small, Medium, Large, 1X and 2X are in parentheses

FINISHED MEASUREMENTS

Bust (closed) – 32(36-40-44-48-52)″

Length – 23(23-24-24-25-25½)″

MATERIALS

7(7-8-9-10-11) Hanks **BERROCO FLICKER** (50 grs), #3312
Odile

Straight knitting needles, size 8 (5.00 mm) and 10 (6.00 mm) OR SIZE TO OBTAIN GAUGE

3 St markers

Nine ½″ buttons

GAUGE

18 sts = 4″; 26 rows = 4″ in St st on larger needles

TO SAVE TIME, TAKE TIME TO CHECK GAUGE

STITCH GLOSSARY

P2tog-b

(Sl next st as if to k with yarn in back) twice, insert LH needle through both sts from the left and in front of the RH needle, remove RH needle, p the 2 sts tog from the back with RH needle

HONEYBEE PATTERN (Starts with 16 sts)

Note: Due to the nature of this pat, the number of sts will vary from row to row. The number given at the end of each row indicates the number of sts you will have after completing that row.

Row 1 (RS): P2, k4, k2 tog, yo, SSK, k4, p2 – 15 sts.

Row 2: K2, p3, p2tog-b, drop yo of previous row, (yo) twice, p2 tog, p3, k2 – 14 sts.

Row 3: P2, k2, k2 tog, drop yo's of previous row, (yo) 3 times, SSK, k2, p2 – 13 sts.

Row 4: K2, p1, p2tog-b, drop yo's of previous row, (yo) 4 times, p2 tog, p1, k2 – 12 sts.

Row 5: P2, k2 tog, drop yo's of previous row, cast on 4 sts onto RH needle, insert point of RH needle under the 4 loose strands and k these strands tog, yo, k the 4 loose strands tog again, cast on 4 sts onto RH needle, SSK, p2 – 17 sts.

Row 6: K2, p5, p2 tog, p6, k2 – 16 sts.

Rep these 6 rows for Honeybee Pat.

RAISED TEXTURE STITCH (Multiple of 4 sts)

Row 1 (RS): * P3 tog, leaving sts on LH needle, yo, p these 3 sts tog again, sl sts from needle, k1, rep from * across.

Row 2: Purl.

Row 3: K1, * p3 tog, leaving sts on LH needle, yo, p these 3 sts again, slipping sts from needle, rep from * across.

Row 4: Purl.

Rep these 4 rows for Raised Texture St

LITTLE SHELL (Starts with 9 sts)

Note: Due to the nature of this pat, the number of sts will vary from row to row. The number given after each row indicates the number of sts you will have after completing that row.

Row 1 (RS): P2, k1, (yo, k1) 4 times, p2 – 13 sts.

Row 2: K2, p1, (k1, p1) 4 times, k2.

Row 3: P2, k1, p1, SSK, k1, k2 tog, p1, k1, p2 – 11 sts.

Row 4: K2, p1, k1, p3 tog, k1, p1, k2 – 9 sts.

Rep these 4 rows for Little Shell

BACK

With smaller needles, cast on 98(110-122-134-146-158) sts.

Ribbing: Row 1 (RS): K2, * p2, k2, rep from * across.

Row 2: P2, * k2, p2, rep from * across. Rep these 2 rows until piece measures 2″ from beg, end on RS. Change to larger needles and p the next row, dec 26(28-32-34-38-40) sts across – 72(82-90-100-108-118) sts. Work even in St st until piece measures 5(5-5½-5½-6-6)″ from beg, end on WS.

Dec Row (RS): K1, k2 tog, k to last 3 sts, SSK, k1 – 70(80-88-98-106-116) sts. Rep this dec every 3″ once more – 68(78-86-96-104-114) sts. Work even until piece measures 10(10-10½-10½-11-11)″ from beg, end on WS.

Inc Row (RS): K1, M1k, k to last st, M1k, k1 – 70(80-88-98-106-116) sts. Rep this inc every 3″ once more – 72(82-90-100-108-118) sts. Work even until piece measures 14(14-14½-14 ½-15-15)″ from beg, end on WS.

Shape Armholes: Bind off 4(5-6-7-8-9) sts at beg of the next 2 rows, then 2 sts at beg of the following 2 rows – 60(68-74-82-88-96) sts. Dec 1 st each side every RS row 5(7-8-10-10-12) times – 50(54-58-62-68-72) sts. Work even until armholes measure 8(8-8½-8½-9-9½)″, end on WS.

Shape Shoulders: Bind off 4(4-6-6-7-7) sts at beg of the next 2 rows, then 4(5-5-6-7-8) sts at beg of the next 4 rows. Bind off remaining 26 sts for back neck.

LEFT FRONT

With smaller needles, cast on 46(50-58-62-66-70) sts. Work in ribbing same as back for 2", end on RS. Change to larger needles and p the next row, inc 4(4-1-1-2-2) sts across – 50(54-59-63-68-72) sts.

Establish Pat Sts: Row 1 (RS): K5(9-14-18-23-27), place marker, work Row 1 of Honeybee pat over 16 sts, place marker, work Row 1 of Raised Texture St over 20 sts, place marker, work Row 1 of Little Shell over 9 sts.

Row 2: Work Row 2 of Little Shell to first marker, work Row 2 of Raised Texture St to next marker, work Row 2 of Honeybee Pat to last marker, p to end. Work even in pat as established until piece measures 5(5-5½-5½-6-6)" from beg, end on WS.

Dec Row (RS): K1, k2 tog, work to end – 49-53-58-62-67-71) sts. Rep this dec every 3" once more – 48(52-57-61-66-70) sts. Work even until piece measures 10(10-10½-10½-11-11)" from beg, end on WS.

Inc Row (RS): K1, M1k, work to end – 49(53-58-62-67-71) sts. Rep this inc every 3" once more – 50(54-59-63-68-72) sts. Work even until piece measures 14(14-14½-14½-15-15)" from beg, end on WS.

Shape Armhole: Bind off 4(5-6-7-8-9) sts at beg of the next RS row, the 2 sts at beg of the following RS row – 44(47-51-54-58-61) sts. Dec 1 st at armhole edge every RS row 5(7-8-10-10-12) times – 39(40-43-44-48-49) sts. Work even until armhole measures 6(6-6½-6½-7-7½)", end on RS.

Shape Neck: Next Row (WS): Bind off 6 sts, work to end – 33(34-37-38-42-43) sts. Bind off 3 sts at neck edge once, then dec 1 st at neck edge EVERY row 10 times – 20(21-24-25-29-30) sts. Note: Due to the difference in gauges, there will be a different number of sts on front shoulder than on back. They will, however, measure the same. When armhole measures 8(8-8½-8½-9-9)", end on WS. Bind off 6(7-8-9-9-10) sts at armhole edge once, then 7(7-8-8-10-10) sts twice for shoulder.

RIGHT FRONT

Work same as left front until piece measures 2" from beg, end on WS – 50(54-59-63-68-72) sts.

Establish Pat Sts: Row 1 (RS): Work Row 1 of Little Shell over 9 sts, place marker, work Row 1 of Raised Texture St over 20 sts, place marker, work Row 1 of Honeybee Pat over 16 sts, place marker, k to end.

Row 2: P to first marker, work Row 2 of Honeybee Pat to next marker, work Row 2 of Raised Texture St to last marker,

work Row 2 of Little Shell to end. Complete to correspond to left front, reversing all shaping. Work side decs at end of RS rows as SSK, k1. Work side incs at end of RS rows as M1k, k1. Bind off for armhole on WS rows. Work armhole decs at end of RS rows. Bind off for neck on RS rows. Work neck decs at beg of RS rows. Bind off for shoulder on WS rows.

SLEEVES

With smaller needles, cast on 58(58-62-62-66-66) sts. Work in ribbing same as back for 4", end on RS. Change to larger needles and p the next row, dec 12(12-14-14-16-16) sts across – 46(46-48-48-50-50) sts. Work in St st, inc 1 st each side every 3¼(2-1¼-1¼-1-1)" 4(6-7-10-11-13) times – 54(58-62-68-72-76) sts. Work even until sleeve measures 18" from beg, end on WS.

Shape Cap: Bind off 4(5-6-7-8-9) sts at beg of the next 2 rows, then 2 sts at beg of the following 2 rows – 42(44-46-50-52-54) sts. Dec 1 st each side every 4th row 2(1-2-0-1-2) times, then every RS row 10(12-12-16-14-14) times, end on WS – 18(18-18-18-22-22) sts. Bind off 3 sts at beg of the next 2 rows. Bind off remaining 12(12-12-12-16-16) sts.

FINISHING

Sew shoulder seams. Sew in sleeves. Sew side and sleeve seams.

Neckband: With RS facing, using smaller needles, beg at right front edge, pick up and k30 sts along right front neck edge, 28 sts across back neck edge, then 30 sts along left front neck edge – 88 sts. Knit 2 rows. Bind off knitwise on WS.

Left Frontband: With RS facing, using smaller needles, beg at top of left neckband, pick up and k126(126-130-130-134-138) sts along left front edge. Beg with Row 2, work in ribbing same as back for 1", end on WS. Bind off in ribbing.

Right Frontband: Beg at lower right edge, work to correspond to left frontband until band measures ½", end on WS.

Buttonhole Row (RS): Work 2(2-4-4-2-4) sts, k2 tog, yo, * work 13(13-13-13-14-14) sts, k2 tog, yo, rep from * 7 times more, work to end. Complete to correspond to left frontband. Sew on buttons.

