

# Siren

Designed by Mel Kennelly / Skill level: Easy



## FINISHED MEASUREMENTS

Approximately 30" / 76 cm wide x  
65" / 165 cm down center.

## YARN

**BERROCO MODERN COTTON DK**  
(100 g): 1 hank #6691 Diamond Hill

## HOOKS AND NOTIONS

Crochet hook, size E / 3.5 mm  
*or size to obtain gauge*

## GAUGE

17 sts and 8 rows = 4" / 10 cm in  
pattern stitch

*Gauge is measured after blocking.  
To save time and ensure accurate  
measurements, take time to check  
gauge.*

**Berroco**  
**Modern™ Cotton DK**

Find this Yarn 



# BERROCO®



[www.berroco.com](http://www.berroco.com)



*We recommend using yarns called for in our instructions. Every effort has been made to ensure that directions contained in this pattern are accurate and complete, however errors do occur. We cannot be responsible for variance of individual knitters, human or typographical errors.*

*All pattern PDFs are updated when corrections are made. In the event of finding an error, please make sure you've downloaded the most recent version.*

## CONSTRUCTION NOTES

Shawl is made sideways by starting at the smaller end and working increases across.

## SPECIAL ABBREVIATION

**Picot:** Ch 3, sl st into first of these 3 ch.

## SHAWL

Ch 10.

**Set Up Row:** Sc in 2nd ch from hook, \* ch 5, skip 3 ch, sc in next ch; rep from \* once more, turn.

**Row 1:** Ch 5, sc in first ch–5 sp, ch 5, sc in next ch–5 sp, ch 2, tr in beg sc.

**Row 2:** Ch 1, sc in tr, \* ch 5, sc in ch–5 sp; rep from \* to end of row, turn.

**Row 3 (Inc Row):** \* Ch 5, sc in next ch–5 sp; rep from \* once more, ch 2, tr into beg sc below, ch 5, turn.

**Row 4:** Sc in 2nd ch from hook, ch 5, sc in tr, \* ch 5, sc in next ch–5 sp, rep from \* to end of row, turn.

**Row 5:** \* Ch 5, sc in next ch–5 sp; rep from \* to end of row, ch 2, tr in beg sc below, turn.

**Row 6:** Ch 1, sc into tr, \* ch 5, sc in next ch–5 sp; rep from \* to end of row, turn.

Rep rows 3–6 twenty-six times more, fasten off.

## BORDER

**Rnd 1:** Beginning at the first sc worked into the foundation





ch of the shawl and working along the diagonal edge, 2 sc in ch-2 sp, \* 4 sc in side of tr, 1 sc in next ch sp, 3 sc in next tr, 3 sc in ch-4 sp, 3 sc into ch-2 corner sp; rep from \* to last tr of the edge, 3 sc in side of tr, 3 sc in top of tr, turn shawl to work along longer short edge. Sc in next 2 ch, \*\* sc in sc, 4 sc in ch-5 sp; rep from \*\* to next corner, sc into each st to next corner shawl, 3 sc in first ch of shawl, sc in each st to beg of round, join with a sl st in beg sc, turn.

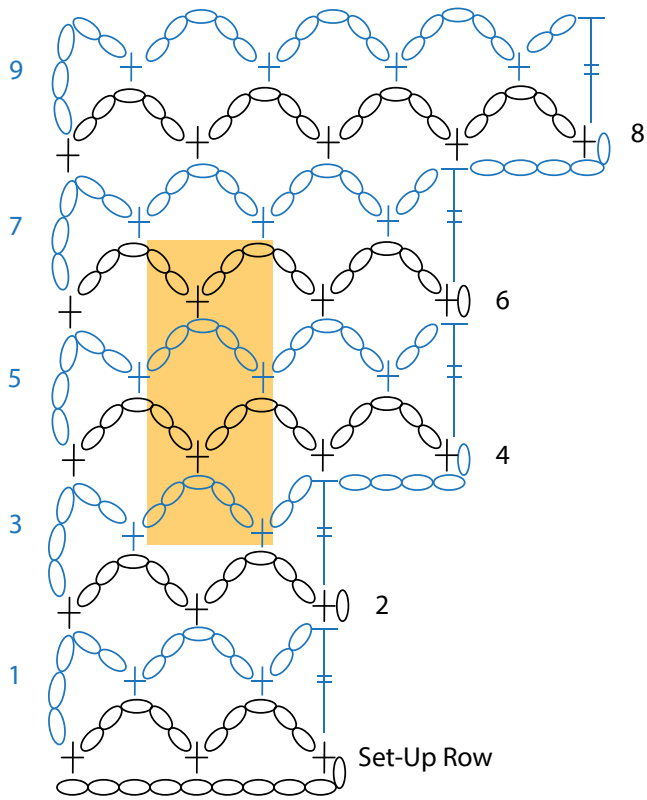
**Rnd 2:** Ch 1, \* sc in next sc, ch 3, dc2tog working first leg into same st, skipping 3 sc, and working 2nd leg into next sc, make picot, ch 3, sc into same st as 2nd leg of dc2tog \*; rep from \* to \* once more, ch 4, dc2tog working first leg into same st, skipping 2 sc, and working 2nd leg into next sc, ch 3, make picot, ch 4, rep from \* to \* to end of shawl edge, ch 1, join with a sl st in next sc, fasten off.

## FINISHING

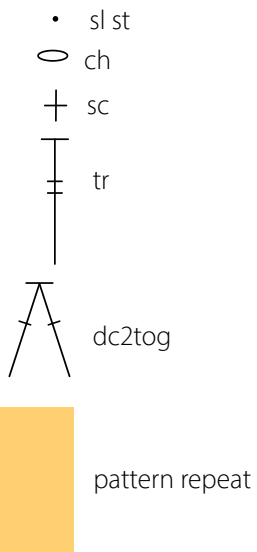
Weave in all ends and block as desired.



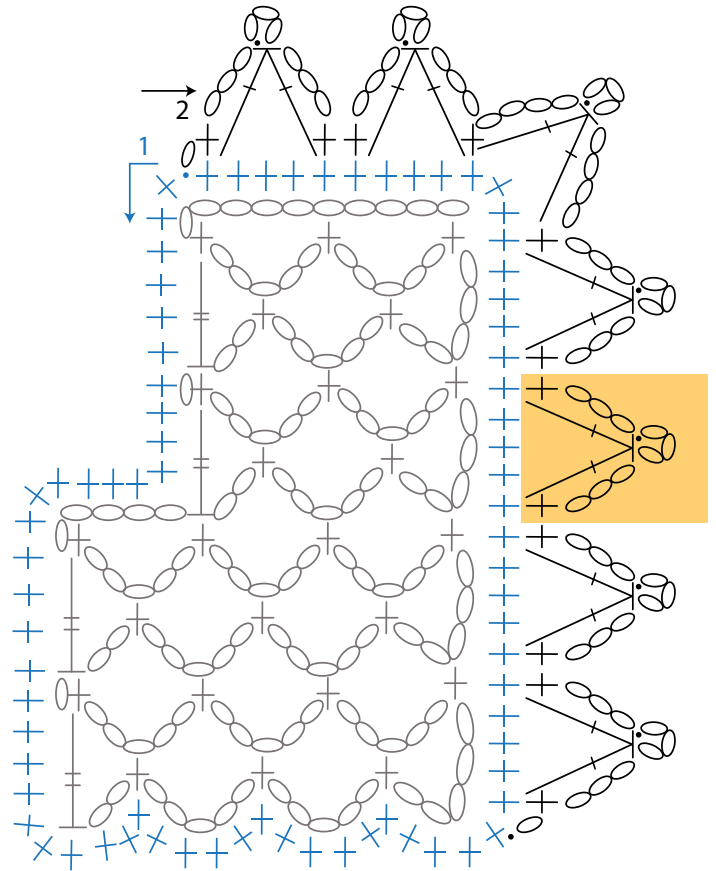
## PATTERN STITCH



## KEY TO CHART



## BORDER STITCH



## STANDARD ABBREVIATIONS & TERMS

**Note:** Berroco patterns use American crochet terms

**beg:** beginning

**BLO:** back loop only

**BP:** back post

**BPdc:** back post double crochet

**BPhdc:** back post half double crochet

**BPsc:** back post single crochet

**BPtc:** back post treble crochet

**CC:** contrasting color

**cont:** continue

**ch:** chain

**dec:** decrease

**dc:** double crochet

**dc2tog:** double crochet 2 stitches together

**dtr:** double treble crochet

**est:** established

**FLO:** front loop only

**est:** established

**FP:** front post

**FPdc:** front post double crochet

**FPhdc:** front post half double crochet

**FPsc:** front post single crochet

**FPtc:** front post treble crochet

**hdc:** half double crochet

**hdc2tog:** half double crochet 2 stitches together

**inc:** increase

**MC:** main color

**pat(s):** pattern(s)

**pm:** place marker

**rep:** repeat

**rnd(s):** round(s)

**RS:** right side

**sc:** single crochet

**sc2tog:** single crochet 2 stitches together

**sl st:** slip stitch

**sliding loop:** Form a loop of yarn around your fingers, with the end attached to the ball on the right and the tail on the left. Insert hook into the loop under both pieces of yarn and draw up a loop onto hook. (This does not count as your first stitch.) Work first row into the original loop. Pull up the yarn tail after your first row is complete to close the loop.

**sp:** space

**st(s):** stitch(es)

**tog:** together

**tr:** treble

**WS:** wrong side

**yo:** yarn over

### QUESTIONS?

Scan the QR code for the Berroco Learning Center where you will find our fit guide, how-to videos, the complete glossary and more.

