

Scout

Designed by the Berroco Design Team / Skill level: Intermediate



FINISHED MEASUREMENTS

Approximately 17" / 43 cm around
x 11" / 28 cm high (unstretched)

YARN

BERROCO ULTRA WOOL CHUNKY
(100 grs): 1 ball #43118 Marjoram

NEEDLES and NOTIONS

16" / 40 cm circular needle, size
10½ / 6.5 mm *or size to obtain
gauge*

1 set double-pointed needles, or
preferred needles for working small
circumferences in the round, size

10½ / 6.5 mm

1 stitch marker

Tapestry needle

GAUGE

16 sts and 22 rnds = 4" / 10 cm in
pattern stitch

*Gauge is measured after blocking.
To save time and ensure accurate
measurements, take time to check
gauge.*

**Berroco Ultra® Wool
Chunky**

Find this Yarn 



BERROCO®



www.berroco.com



We recommend using yarns called for in our instructions. Every effort has been made to ensure that directions contained in this pattern are accurate and complete, however errors do occur. We cannot be responsible for variance of individual knitters, human or typographical errors.

All pattern PDFs are updated when corrections are made. In the event of finding an error, please make sure you've downloaded the most recent version.

CONSTRUCTION NOTES

Hat is worked in the round from the bottom up. Work either from directions below, or follow chart for pattern.

HAT

With circular needle, cast on 70 sts. Place marker and join for working in the round.

Work even in k1, p1 ribbing for 4" / 10 cm.

Establish Pattern: Rnd 1: [K8, p6] 5 times.

Rnd 2: Knit.

Rnds 3 and 4: Rep Rnds 1 and 2.

Rnd 5: Rep Rnd 1.

Rnd 6: [P1, k6, p2, k4, p1] 5 times.

Rnd 7: [P2, k4, p2, k6] 5 times.

Rnd 8: [K1, p2, k2, p2, k7] 5 times.

Rnd 9: [K2, p4, k8] 5 times.

Rnd 10: Rep Rnd 8.

Rnd 11: Rep Rnd 7.

Rnd 12: Rep Rnd 6.

Rep these 12 rounds until piece measures approximately 8½" / 21.5 cm from cast-on, end on Rnd 1 of pattern.

Note: As you decrease for top, when there are too few stitches to fit comfortably on circular needle, change to dpns, or preferred needles for working small circumferences in the round.



Shape Top: Dec Rnd 1: [K5, k2tog] 10 times—60 sts.

Knit 1 round.

Dec Rnd 2: [K4, k2tog] 10 times—50 sts.

Knit 1 round.

Dec Rnd 3: [K3, k2tog] 10 times—40 sts.

Knit 1 round.

Dec Rnd 4: [K2, k2tog] 10 times—30 sts.

Knit 1 round.

Dec Rnd 5: [K1, k2tog] 10 times—20 sts.

Knit 1 round.

Dec Rnd 6: [K2tog] 10 times—10 sts.

Knit 1 round.

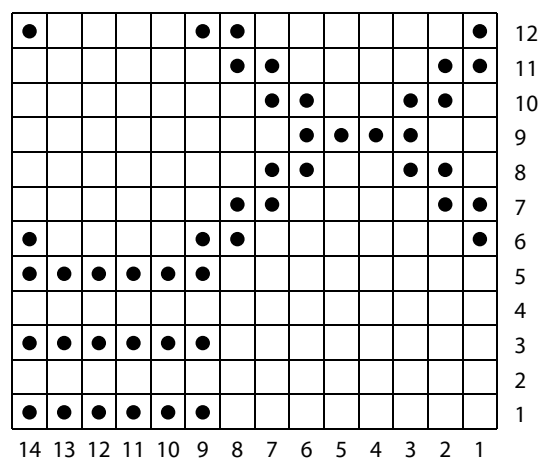
Dec Rnd 7: [K2tog] 5 times—5 sts.

Break yarn, leaving an 8" / 20 cm long end. Thread end into tapestry needle, draw through all stitches on needles, pull up tightly and secure, then fasten off.

FINISHING

Weave in all ends and block as desired.

SCOUT CHART



KEY TO CHART

□ knit

● purl

CHART NOTES

Work from right to left on every round.

STANDARD ABBREVIATIONS & TERMS

beg: beginning
BOR: beginning of round
CC: contrasting color
CDD: Centered Double Decrease—Slip 2 together (as if to k2tog), knit 1, pass the 2 slipped stitches over
cn: cable needle
dec: decrease
dpn(s): double pointed needle(s)
end on WS: end having just completed a Wrong Side row.
end on RS: end having just completed a Right Side row
Garter St: Knit EVERY row when working back and forth in rows. Knit 1 round, purl 1 round when working in the round.
inc: increase
k: knit
k tbl: knit through the back loop(s)
k2tog: knit 2 stitches together
k3tog: knit 3 stitches together
kfb: knit in the front and back of the next st
LH: left hand
LLI: Left Lifted Increase—Insert LH needle into the purl bump one row below the st just worked on the RH needle and knit into this st (1 st inc'd)
M1: Make 1—Pick up horizontal strand between stitch just worked and next stitch from front to back, place on left hand needle, knit this stitch through the back (1 stitch increased).
M1L: Make 1 Left—Work as for M1.
M1p: Make 1 purl—Pick up horizontal strand between stitch just worked and next stitch from front to back, place on left hand needle, purl this stitch through the back (1 stitch increased).
M1pL: Make 1 purl Left—Work as for M1p.
M1pR: Make 1 purl Right—Pick up horizontal strand between stitch just worked and next stitch from back to front, place on left hand needle, purl this stitch through the front (1 stitch increased).
M1R: Make 1 Right—Pick up horizontal strand between stitch just worked and next stitch from back to front, place on left hand needle, knit this stitch through the front (1 stitch increased).
MC: main color
p: purl
p tbl: purl through the back loop(s)
p2tog: purl 2 stitches together
p3tog: purl 3 stitches together
pat(s): pattern(s)
pm: place marker

psso: pass slipped stitch over knit stitch
rep: repeat
Rev St st: Reverse Stockinette Stitch—Purl 1 row, knit 1 row alternately when working back and forth in rows. The purl side is the right side of the work. Purl EVERY round when working in the round.
RH: right hand
RLI: Right Lifted Increase—Insert RH needle into the purl bump of the next st on the LH needle and knit into this st (1 st inc'd)
rnd(s): round(s)
RS: right side
sl: slip
sm: slip marker
SSK: Slip 2 stitches knitwise, insert point of left hand needle through fronts of these 2 stitches and knit 2 together.
SSP: Slip 2 stitches knitwise, transfer these 2 stitches back to left hand needle, purl 2 together through the back loops.
SSSK: Slip 3 stitches knitwise, insert point of left hand needle through fronts of these 3 stitches and knit 3 together.
st(s): stitch(es)
St st: Stockinette Stitch—Knit 1 row, purl 1 row alternately when working back and forth in rows. The knit side is the right side of work. Knit EVERY round when working in the round.
tbl: through back loop(s)
w&t: wrap and turn, a method of concealing a hole created in short row shaping. On RS rows: With yarn held in front, slip next stitch purlwise, then bring yarn between needles to the back. Slip that same stitch back to the left needle. Turn your work. On WS Rows: With yarn held in back, slip next stitch purlwise, then bring yarn between needles to the front. Slip that same stitch back to the left needle. Turn your work. Unless otherwise indicated, each time you come to a wrapped stitch when working subsequent rows, slip the wrap back over stitch and onto needle, then work the wrap together with its accompanying stitch.
WS: wrong side
wyib: with yarn in back
wyif: with yarn in front
yo: yarn over

QUESTIONS?

Scan the QR code for the Berroco Learning Center where you will find our fit guide, how-to videos, the complete glossary and more.

