

# Roselle

Designed by the Berroco Design Team / Skill level: Intermediate



## FINISHED MEASUREMENTS

Bust (closed): (37½, 41, 44¾) [48¼, 52, 55½, 59¼] {63, 66½, 70}" / (95, 104, 113.5) [122.5, 132, 141, 150.5] {160, 169, 178} cm

Length: (20½, 21, 21) [21¼, 21½, 21¾, 22] {22¼, 22½, 22¾}" / (52, 53.5, 53.5) [54, 54.5, 55, 56] {56.5, 57, 57.5} cm

Shown in size 41" / 104 cm.

Recommended ease:

Approximately 2–4" / 5–10 cm positive ease.

## YARN

**BERROCO VINTAGE DK** (100 grs):  
(4, 4, 5) [5, 5, 6, 6] {7, 7, 7} hanks  
#2198 Grape Twist

## NEEDLES and NOTIONS

32" / 80 cm circular needles, sizes,  
4 / 3.25 mm and 6 / 4 mm or size to  
obtain gauge  
6 buttons

## GAUGE

22 sts and 28 rows = 4" / 10 cm in  
Pattern Stitch on larger needles  
Gauge shown is after blocking. To  
save time and ensure accurate  
measurements, take time to check  
gauge.

**Berroco Vintage® DK**

Find this Yarn 



[www.berroco.com](http://www.berroco.com)

# BERROCO®

*Yarn for all makers™*

*We recommend using yarns called for in our instructions. Every effort has been made to ensure that directions contained in this book are accurate and complete, however errors do occur. We cannot be responsible for variance of individual knitters, human or typographical errors.*

*All pattern PDFs are updated when corrections are made. In the event of finding an error, please make sure you've downloaded the most recent version.*

## NOTE

Work pattern using either Pattern Stitch below or chart.

## PATTERN STITCH

Multiple of 10 sts + 3

**Row 1 (RS):** K5, \* k2tog, yo, k8; rep from \* across, end last rep k6 instead of k8.

**Row 2:** P5, \* k3, p7; rep from \* across, end last rep p5 instead of p7.

**Row 3:** K4, [k2tog, yo] twice, \* k6, [k2, yo] twice; rep from \* across, end k5.

**Row 4:** P4, \* k5, p5; rep from \* across, end last rep p4 instead of p5.

**Row 5:** K3, \* [k2tog, yo] 3 times, k4; rep from \* across.

**Row 6:** P3, \* k7, p3; rep from \* across.

**Row 7:** Rep Row 3.

**Row 8:** Rep Row 4.

**Row 9:** Rep Row 1.

**Row 10:** Rep Row 2.

**Row 11:** K10, \* k2tog, yo, k8; rep from \* across, end last rep k11 instead of k8.

**Row 12:** P10, \* k3, p7; rep from \* across, end last rep p10 instead of p7.

**Row 13:** K9, \* [k2tog, yo] twice, k6; rep from \* across, end last rep k10 instead of k6.

**Row 14:** P9, \* k5, p5; rep from \* across, end last rep p9 instead of p5.

**Row 15:** K8, \* [k2tog, yo] 3 times, k4; rep from \* across, end last rep k9 instead of k4.

**Row 16:** P8, \* k7, p3; rep from \* across, end last rep p8 instead of p3.

**Row 17:** Rep Row 13.

**Row 18:** Rep Row 14.

**Row 19:** Rep Row 11.

**Row 20:** Rep Row 12.

Rep these 20 rows for Pattern Stitch.

## BACK

With smaller needles, cast on (103, 113, 123) [133, 143, 153, 163] {173, 183, 193} sts. Do not join.







**Set Up Rib: Row 1 (WS):** P1, \* k1, p1; rep from \* across.

**Row 2 (RS):** K1, \* p1, k1; rep from \* across.

Rep these 2 rows until piece measures 1½" / 4 cm, end on WS.

Change to larger needles.

**Establish Pattern: Row 1 (RS):** Knit (5, 0, 5) [0, 5, 0, 5] {0, 5, 0}, pm, work Row 1 of Chart or Pattern Stitch over (93, 113, 113) [133, 133, 153, 153] {173, 173, 193} sts, pm, knit (5, 0, 5) [0, 5, 0, 5] {0, 5, 0}.

**Row 2:** Purl to first marker, sm, work Row 2 of Chart of Pattern Stitch to last marker, sm, purl to end.

Work even in pattern as established until piece measures 12" / 30.5 cm from cast-on, end on WS. Mark beginning and end of last row for beginning of armholes. Work even until armholes measure (8½, 9, 9) [9¼, 9½, 9¾, 10] {10¼, 10½, 10¾}" / (21.5, 23, 23) [23.5, 24, 25, 25.5] {26, 26.5, 27.5} cm from markers, end on WS.

**Shape Shoulders:** Bind off (27, 32, 37) [42, 47, 52, 57] {62, 67, 72} sts at beginning of the next 2 rows, removing markers. Bind off remaining 49 sts for back neck.

## LEFT FRONT

With smaller needles, cast on (48, 53, 58) [63, 68, 73, 78] {83, 88, 93} sts. Do not join. Work in ribbing as for back for 1½" / 4 cm, end on WS.

Change to smaller needles.

**Establish Pattern: Row 1 (RS):** Knit (5, 0, 5) [0, 5, 0, 5] {0, 5, 0}, pm, work Row 1 of Chart or Pattern Stitch to end.

**Row 2:** Work Row 2 of Chart of Pattern Stitch to marker, sm, purl to end.

Work even in pattern as established until piece measures 12" / 30.5 cm from cast-on, end on WS. Mark end of last row for beginning of armhole. Work even until armhole measures (1½, 2, 2) [2¼, 2½, 2¾, 3] {3¼, 3½, 3¾}" / (4, 5, 5) [5.5, 6.5, 7, 7.5] {8, 9, 9.5} cm from marker, end on WS. Mark beginning of last row for start of neck shaping.

**Note:** When shaping neck, if there are not enough stitches to work an entire k2tog, yo, work the extra stitches in St st.

**Shape Neck: Dec Row (RS):** Work to the last 3 sts, SSK, k1—1 st dec'd.

Rep Dec Row every RS row 20 times more—(27, 32, 37) [42, 47, 52, 57] {62, 67, 72} sts. Work even until armhole measures (8½, 9, 9) [9¼, 9½, 9¾, 10] {10¼, 10½, 10¾}" / (21.5, 23, 23) [23.5, 24, 25, 25.5] {26, 26.5, 27.5} cm from marker, end on WS. Bind off.

## RIGHT FRONT

Work as for Left Front until ribbing has been completed, end on WS—(48, 53, 58) [63, 68, 73, 78] {83, 88, 93} sts.

**Establish Pattern: Row 1 (RS):** Work Row 1 of Chart or Pattern Stitch to last (5, 0, 5) [0, 5, 0, 5] {0, 5, 0} sts, pm, knit (5, 0, 5) [0, 5, 0, 5] {0, 5, 0}.

**Row 2:** Purl to marker, sm, work Row 2 of Chart of Pattern Stitch to end.

Work even in pattern as established until piece measures 12" / 30.5 cm from cast-on, end on WS. Mark beginning of last row for beginning of armhole.

Work even until armhole measures (1½, 2, 2) [2¼, 2½, 2¾, 3] {3¼, 3½, 3¾}" / (4, 5, 5) [5.5, 6.5, 7, 7.5] {8, 9, 9.5} cm from marker, end on WS. Mark end of last row for start of neck shaping.

**Note:** When shaping neck, if there are not enough stitches to work an entire k2tog, yo, work the extra stitches in St st.

**Shape Neck: Dec Row (RS):** K1, k2tog, work to end—1 st dec'd.

Rep Dec Row every RS row 20 times more—(27, 32, 37) [42, 47, 52, 57] {62, 67, 72} sts. Work even until armhole measures (8½, 9, 9) [9¼, 9½, 9¾, 10] {10¼, 10½, 10¾}" / (21.5, 23, 23) [23.5, 24, 24.5, 25.5] {26, 26.5, 27} cm from marker, end on RS. Bind off.

### SLEEVES

With smaller needles, cast on 53 sts. Work in ribbing as for back for 1" / 2.5 cm, end on WS.

Change to larger needles and work even in Pattern Stitch until sleeve measures 2" / 5 cm from cast-on, end on WS.

**Inc Row (RS):** K1, M1L, work to last stitch, M1R, k1—2 sts inc'd.

Rep Inc Row every 4th row (16, 13, 13) [12, 11, 9, 8] {7, 5, 4} times more, then every RS row (3, 9, 9) [11, 13, 17, 19] {21, 25, 27} times—(93, 99, 99) [101, 103, 107, 109] {111, 115, 117} sts. Work even until sleeve measures 13" / 33 cm from cast-on, end on WS. Bind off.

### FINISHING

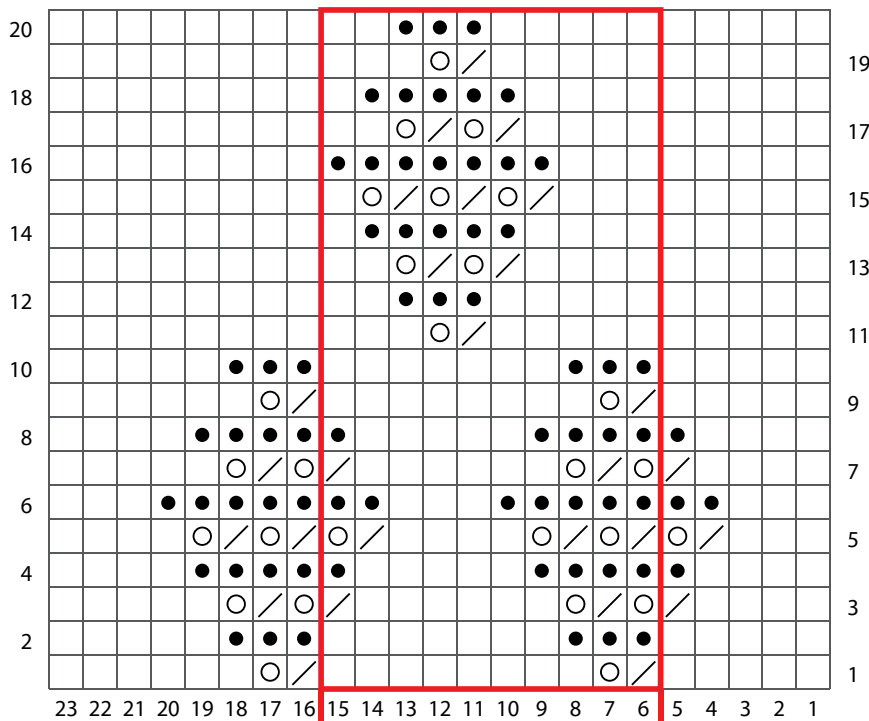
Sew shoulder seams. Sew sleeves to body between markers. Sew side and sleeve seams.

**Neck/Front Bands:** With RS facing, using circular needle, begin at lower right front edge, pick up and knit (72, 74, 74) [75, 76, 78, 80] {80, 82, 84} sts along right front edge to neck marker, 39 sts along right front neck edge, 49 sts across back neck edge, 39 sts along left front neck edge to marker, then (72, 74, 74) [75, 76, 78, 80] {80, 82, 84} sts along left front neck edge—(271, 275, 275) [277, 279, 283, 287] {287, 291, 295} sts. Beginning with Row 2, work in ribbing as for back for 3 rows, end on WS.

**Buttonhole Row (RS):** Work 3 sts, k2tog, yo, \* work (11, 11, 11) [12, 12, 12, 13] {13, 13, 13} sts, k2tog, yo; rep from \* 4 times more, work to end—6 buttonholes made.

Continue working in ribbing as established until band measures 1" / 2.5 cm, end on WS. Bind off loosely in ribbing. Weave in all ends and block as desired. Sew on buttons.

### ROSELLE CHART



10-stitch pattern repeat

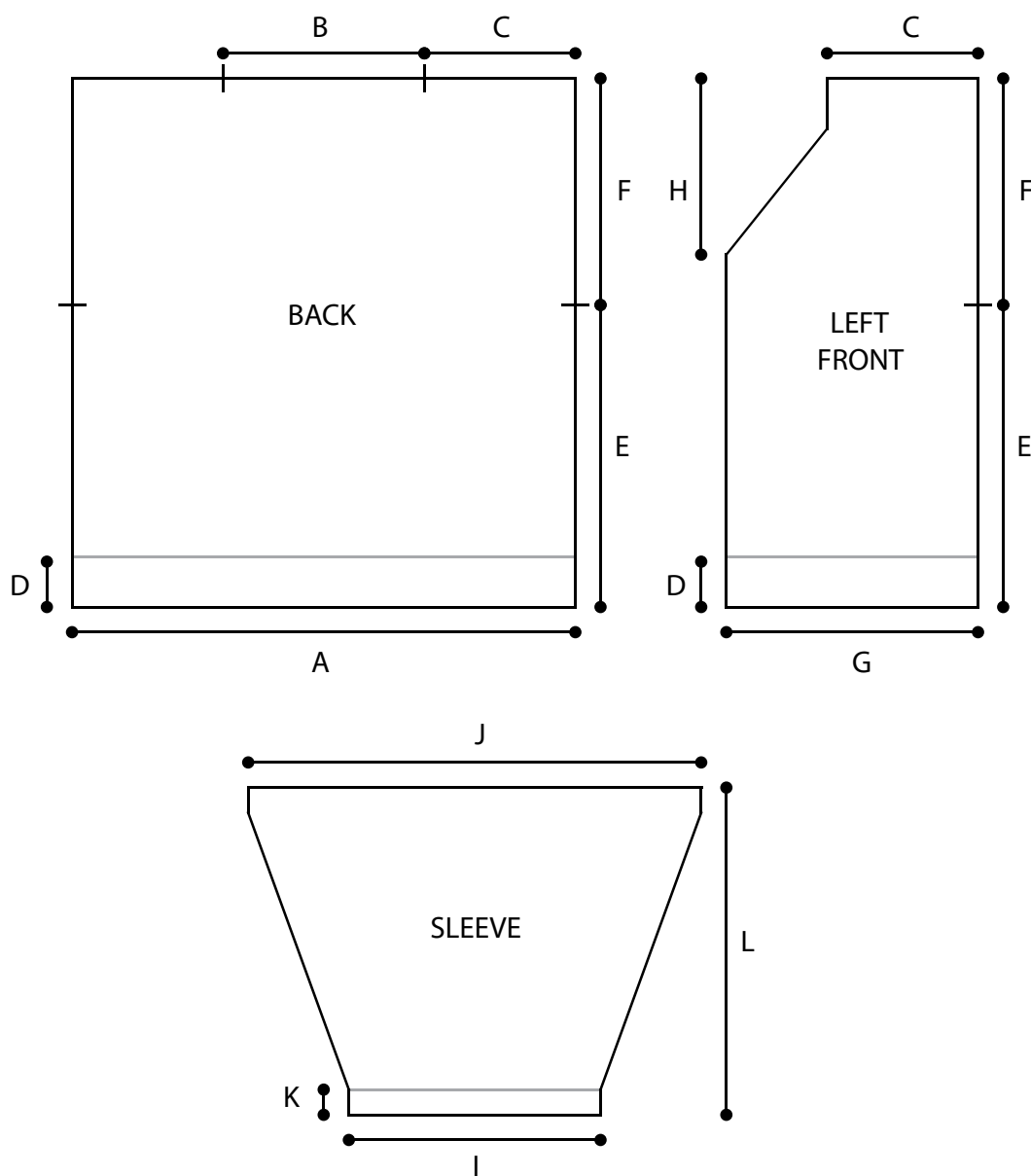
#### KEY TO CHART

- knit on RS; purl on WS
- knit on WS
- yarn over
- k2tog
- pattern repeat

#### CHART NOTES

Work from right to left on RS rows and from left to right on WS rows.

## ROSELLE SCHEMATIC



## ROSELLE MEASUREMENTS

A (Back Width): (18¾, 20½, 22¼) [24, 26, 27¾, 29½] {31½, 33¼, 35}" / (47.5, 52, 56.5) [61, 66, 70.5, 75] {80, 84.5, 89} cm

B (Back Neck Width): 9" / 23 cm

C (Shoulder Width): (5, 5¾, 6¾) [7½, 8½, 9½, 10¼] {11¼, 12, 13}" / (12.5, 14.5, 17) [19, 21.5, 24, 26] {28.5, 30.5, 33} cm

D (Lower Ribbing Length): 1½" / 4 cm

E (Length to Underarms): 12" / 30.5 cm

F (Armhole length): (8½, 9, 9) [9¼, 9½, 9¾, 10] {10¼, 10½, 10¾}" / (21.5, 23, 23) [23.5, 24, 25, 25.5] {26, 26.5, 27.5} cm

G (Front Width): (8¾, 9½, 10½) [11½, 12½, 13¼, 14¼] {15, 16, 17}" / (22, 24, 26.5) [29, 31.5, 33.5, 36] {38, 40.5, 43} cm

H (Front Neck Depth): 7" / 18 cm

I (Sleeve Cuff Width): 9¾" / 25 cm

J (Upper Sleeve Width): (17, 18, 18) [18½, 18¾, 19½, 19¾] {20, 21, 21¼}" / (43, 45.5, 45.5) [47, 47.5, 49.5, 50] {51, 53.5, 54} cm

K (Sleeve Cuff Length): 1" / 2.5 cm

L (Sleeve Length): 13" / 33 cm



## STANDARD ABBREVIATIONS & TERMS

**beg:** beginning  
**CC:** contrasting color  
**CDD:** Centered Double Decrease—Slip 2 together (as if to k2tog), knit 1, pass the 2 slipped stitches over  
**cn:** cable needle  
**dec:** decrease  
**dpn(s):** double pointed needle(s)  
**end on WS:** end having just completed a Wrong Side row.  
**end on RS:** end having just completed a Right Side row  
**Garter St:** Knit EVERY row when working back and forth in rows. Knit 1 round, purl 1 round when working in the round.  
**inc:** increase  
**k:** knit  
**k tbl:** knit through the back loop(s)  
**k2tog:** knit 2 stitches together  
**k3tog:** knit 3 stitches together  
**kfb:** knit in the front and back of the next st  
**LH:** left hand  
**LLI:** Left Lifted Increase—Insert LH needle into the purl bump one row below the st just worked on the RH needle and knit into this st (1 st inc'd)  
**M1:** Make 1—Pick up horizontal strand between stitch just worked and next stitch from front to back, place on left hand needle, knit this stitch through the back (1 stitch increased).  
**M1L:** Make 1 Left—Work as for M1.  
**M1p:** Make 1 purl—Pick up horizontal strand between stitch just worked and next stitch from front to back, place on left hand needle, purl this stitch through the back (1 stitch increased).  
**M1pL:** Make 1 purl Left—Work as for M1p.  
**M1pR:** Make 1 purl Right—Pick up horizontal strand between stitch just worked and next stitch from back to front, place on left hand needle, purl this stitch through the front (1 stitch increased).  
**M1R:** Make 1 Right—Pick up horizontal strand between stitch just worked and next stitch from back to front, place on left hand needle, knit this stitch through the front (1 stitch increased).  
**MC:** main color  
**p:** purl  
**p tbl:** purl through the back loop(s)  
**p2tog:** purl 2 stitches together  
**p3tog:** purl 3 stitches together  
**pat(s):** pattern(s)

**pm:** place marker  
**pssso:** pass slipped stitch over knit stitch  
**rep:** repeat  
**Rev St st:** Reverse Stockinette Stitch—Purl 1 row, knit 1 row alternately when working back and forth in rows. The purl side is the right side of the work. Purl EVERY round when working in the round.  
**RH:** right hand  
**RLI:** Right Lifted Increase—Insert RH needle into the purl bump of the next st on the LH needle and knit into this st (1 st inc'd)  
**rnd(s):** round(s)  
**RS:** right side  
**sl:** slip  
**sm:** slip marker  
**SSK:** Slip 2 stitches knitwise, insert point of left hand needle through fronts of these 2 stitches and knit 2 together.  
**SSP:** Slip 2 stitches knitwise, transfer these 2 stitches back to left hand needle, purl 2 together through the back loops.  
**SSSK:** Slip 3 stitches knitwise, insert point of left hand needle through fronts of these 3 stitches and knit 3 together.  
**st(s):** stitch(es)  
**St st:** Stockinette Stitch—Knit 1 row, purl 1 row alternately when working back and forth in rows. The knit side is the right side of work. Knit EVERY round when working in the round.  
**tbl:** through back loop(s)  
**w&t:** wrap and turn, a method of concealing a hole created in short row shaping. On RS rows: With yarn held in front, slip next stitch purlwise, then bring yarn between needles to the back. Slip that same stitch back to the left needle. Turn your work. On WS Rows: With yarn held in back, slip next stitch purlwise, then bring yarn between needles to the front. Slip that same stitch back to the left needle. Turn your work. Unless otherwise indicated, each time you come to a wrapped stitch when working subsequent rows, slip the wrap back over stitch and onto needle, then work the wrap together with its accompanying stitch.  
**WS:** wrong side  
**wyib:** with yarn in back  
**wyif:** with yarn in front  
**yo:** yarn over

Love Berroco patterns?  
 Sign up for our **KnitBits®** newsletter.

