

# Portage

Designed by Alison Green / Skill level: Intermediate



## FINISHED MEASUREMENTS

Approximately 16" around x 11" high (unstretched with ribbing unfolded)

## YARN

**BERROCO MERCADO** (100 grs):  
1 hank #4128 Cielo

## NEEDLES and NOTIONS

16" length circular needle, size 10 (6.00 mm) *or size to obtain gauge*  
1 set (4) double-pointed knitting needles, size 10 (6.00 mm)  
Cable needle (cn)  
Tapestry needle  
Optional: Faux fur pompom

## GAUGE

15 sts and 18 rows = 4" in St st  
Cable A = 2½" wide  
*To save time and ensure accurate measurements, take time to check gauge.*

**Berroco Mercado®**

Find this Yarn 



**BERROCO®**



[www.berroco.com](http://www.berroco.com)

*We recommend using yarns called for in our instructions. Every effort has been made to ensure that directions contained in this book are accurate and complete, however errors do occur. We cannot be responsible for variance of individual knitters, human or typographical errors.*

*All pattern PDFs are updated when corrections are made. In the event of finding an error, please make sure you've downloaded the most recent version.*

## SPECIAL ABBREVIATIONS

**C4R:** Slip 2 sts to cn and hold in BACK, k2, k2 from cn

**C3R:** Slip 1 st to cn and hold in BACK, k2, k1 from cn

**C3L:** Slip 2 sts to cn and hold in FRONT, k1, k2 from cn

**T3R:** Slip 1 st to cn and hold in BACK, k2, p1 from cn

**T3L:** Slip 2 sts to cn and hold in FRONT, p1, k2 from cn

## CABLE A

(Worked over 14 sts; follow these instructions or follow chart.)

**Rnd 1:** P5, C4R, p5.

**Rnd 2:** P5, k4, p5.

**Rnd 3:** P4, C3R, C3L, p4.

**Rnd 4:** P4, k6, p4.

**Rnd 5:** P3, C3R, k2, C3L, p3.

**Rnd 6:** P3, k8, p3.

**Rnd 7:** P2, T3R, C4R, T3L, p2.

**Rnd 8:** P2, k2, p1, k4, p1, k2, p2.

**Rnd 9:** P1, T3R, p1, k4, p1, T3L, p1.

**Rnd 10:** P1, k2, p2, k4, p2, k2, p1.

Rep these 10 rounds for Cable A.

## CABLE B

(Worked over 4 sts; follow these instructions or follow chart.)

**Rnd 1:** C4R.

**Rnds 2, 3, and 4:** Knit 4.

Rep these 4 rounds for Cable B.

## HAT

With circular needle, cast on 76 sts. Place marker and join for working in the round.

**Set Up Rib: Rnd 1:** \* K1tbl, p1; rep from \* around.

Rep this round until piece measures 6" from beg.

**Inc Rnd:** \* Work 5 sts in ribbing, M1; rep from \* to last 6 sts, work 6 sts in ribbing—90 sts. Wrap next st and turn, so that what was the WS is now facing. (This makes it so the RS of the twisted rib will be showing when the brim is turned up.)

**Set-Up Rnd:** \* P5, k4; rep from \* around.



**Establish Cable Patterns:** **Next Rnd:** Working from charts or written instructions above, \* work Rnd 1 of Cable A over 14 sts, work Rnd 1 of Cable B over 4 sts; rep from \* 4 times more. Work even, following charts as established until Rnds 1–10 of Cable A have been worked twice and Rnds 1–4 of Cable B chart has been worked 5 times (20 rnds total), end on last round of both charts.

**Note:** As you decrease for crown, when there are too few sts to fit comfortably on circular needle, change to dpns, dividing sts onto 3 needles.

**Shape Crown: Dec Rnd 1:** \* P3, p2tog, C4R; rep from \* around—80 sts.

**Next Rnd:** \* P4, k4; rep from \* around.

**Dec Rnd 2:** \* P2, p2tog, k4; rep from \* around—70 sts.

**Next Rnd:** \* P3, k4; rep from \* around.

**Dec Rnd 3:** \* P1, p2tog, C4R; rep from \* around—60 sts.

**Next Rnd:** \* P2, k4; rep from \* around.

**Dec Rnd 4:** \* P2tog, k4; rep from \* around—50 sts.

**Next Rnd:** \* P1, k4; rep from \* around.

**Dec Rnd 5:** \* P1, slip 2 sts to cn and hold in BACK, k2, k2tog from cn; rep from \* around—40 sts.

**Next Rnd:** \* P1, k3; rep from \* around.

**Dec Rnd 6:** \* P1, k2tog, k1; rep from \* around—30 sts.

**Next Rnd:** \* P1, k2; rep from \* around.

**Dec Rnd 7:** \* P1, k2tog; rep from \* around—20 sts.

**Dec Rnd 8:** \* K2tog; rep from \* around—10 sts.

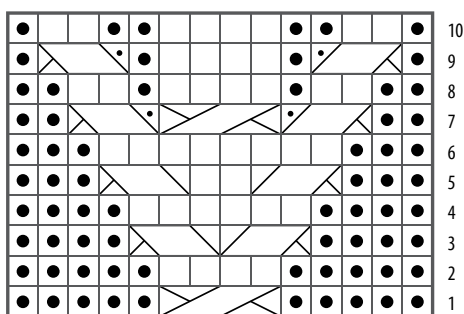
Break off yarn, leaving an 8" long end. Thread end into tapestry needle and draw through all sts on needles. Pull up tightly and secure, then fasten off.

## FINISHING

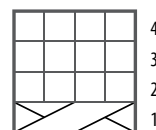
Weave in all ends and block as desired.

**Optional:** Attach faux fur pompom.

CABLE A



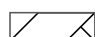
CABLE B

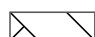



### CHART KEY

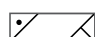
□ knit

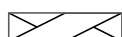
● purl

 C3R: sl 1 to cn and hold to BACK, k2, k1 from cn

 C3L: sl 2 to cn and hold to FRONT, k1, k2 from cn

 T3L: sl 2 to cn and hold to FRONT, p1, k2 from cn

 T3R: sl 1 to cn and hold to BACK, k2, p1 from cn

 C4R: sl 2 to cn and hold to BACK, k2, k2 from cn

### CHART NOTES

Work from right to left on every rnd.

## STANDARD ABBREVIATIONS & TERMS

**beg:** beginning

**CC:** contrasting color

**CDD:** Centered Double Decrease—Slip 2 together (as if to k2tog), knit 1, pass the 2 slipped stitches over

**cn:** cable needle

**dec:** decrease

**dpn(s):** double pointed needle(s)

**end on WS:** end having just completed a Wrong Side row.

**end on RS:** end having just completed a Right Side row

**Garter St:** Knit EVERY row when working back and forth in rows. Knit 1 round, purl 1 round when working in the round.

**inc:** increase

**k:** knit

**k tbl:** knit through the back loop(s)

**k2tog:** knit 2 stitches together

**k3tog:** knit 3 stitches together

**kfb:** knit in the front and back of the next st

**LH:** left hand

**LLI:** Left Lifted Increase—Insert LH needle into the purl bump one row below the st just worked on the RH needle and knit into this st (1 st inc'd)

**M1:** Make 1—Pick up horizontal strand between stitch just worked and next stitch from front to back, place on left hand needle, knit this stitch through the back (1 stitch increased).

**M1L:** Make 1 Left—Work as for M1.

**M1p:** Make 1 purl—Pick up horizontal strand between stitch just worked and next stitch from front to back, place on left hand needle, purl this stitch through the back (1 stitch increased).

**M1pL:** Make 1 purl Left—Work as for M1p.

**M1pR:** Make 1 purl Right—Pick up horizontal strand between stitch just worked and next stitch from back to front, place on left hand needle, purl this stitch through the front (1 stitch increased).

**M1R:** Make 1 Right—Pick up horizontal strand between stitch just worked and next stitch from back to front, place on left hand needle, knit this stitch through the front (1 stitch increased).

**MC:** main color

**p:** purl

**p tbl:** purl through the back loop(s)

**p2tog:** purl 2 stitches together

**p3tog:** purl 3 stitches together

**pat(s):** pattern(s)

**pm:** place marker

**pssso:** pass slipped stitch over knit stitch

**rep:** repeat

**Rev St st:** Reverse Stockinette Stitch—Purl 1 row, knit 1 row alternately when working back and forth in rows. The purl side is the right side of the work. Purl EVERY round when working in the round.

**RH:** right hand

**RLI:** Right Lifted Increase—Insert RH needle into the purl bump of the next st on the LH needle and knit into this st (1 st inc'd)

**rnd(s):** round(s)

**RS:** right side

**sl:** slip

**sm:** slip marker

**SSK:** Slip 2 stitches knitwise, insert point of left hand needle through fronts of these 2 stitches and knit 2 together.

**SSP:** Slip 2 stitches knitwise, transfer these 2 stitches back to left hand needle, purl 2 together through the back loops.

**SSSK:** Slip 3 stitches knitwise, insert point of left hand needle through fronts of these 3 stitches and knit 3 together.

**st(s):** stitch(es)

**St st:** Stockinette Stitch—Knit 1 row, purl 1 row alternately when working back and forth in rows. The knit side is the right side of work. Knit EVERY round when working in the round.

**tbl:** through back loop(s)

**w&t:** wrap and turn, a method of concealing a hole created in short row shaping. On RS rows: With yarn held in front, slip next stitch purlwise, then bring yarn between needles to the back. Slip that same stitch back to the left needle. Turn your work. On WS Rows: With yarn held in back, slip next stitch purlwise, then bring yarn between needles to the front. Slip that same stitch back to the left needle. Turn your work. Unless otherwise indicated, each time you come to a wrapped stitch when working subsequent rows, slip the wrap back over stitch and onto needle, then work the wrap together with its accompanying stitch.

**WS:** wrong side

**wyib:** with yarn in back

**wyif:** with yarn in front

**yo:** yarn over

Love Berroco patterns?  
Sign up for our **KnitBits®** newsletter.

