

Poppy

Designed by Brenda York / Skill level: Intermediate



FINISHED MEASUREMENTS

Approximately (19, 21)" / (48.5, 53.5) cm around x 8" / 20.5 cm high (not including earflaps)
Shown in 21" / 53.5 cm size.

YARN

BERROCO WIZARD (100 grs): 1 ball
#2933 Apatite

NEEDLES and NOTIONS

16" / 40 cm circular needle, size 8 / 5 mm or size to obtain gauge
1 set double-pointed needles or preferred needles for working small circumferences, size 8 / 5 mm
2 double-pointed needles, size 7 / 4.5 mm
Stitch markers (1 a different color for BOR)
Tapestry needle

GAUGE

19 sts and 26 rnds = 4" / 10 cm in St st and pattern stitch on larger needle
Gauge is measured after blocking. To save time and ensure accurate measurements, take time to check gauge.

Berroco Wizard™

Find this Yarn 



BERROCO®

Yarn for all makers™



www.berroco.com



We recommend using yarns called for in our instructions. Every effort has been made to ensure that directions contained in this book are accurate and complete, however errors do occur. We cannot be responsible for variance of individual knitters, human or typographical errors.

All pattern PDFs are updated when corrections are made. In the event of finding an error, please make sure you've downloaded the most recent version.

CONSTRUCTION NOTES

Ties are worked as I-Cords, then stitches are increased for earflaps. Earflaps are worked flat separately, then stitches are cast on, joining earflaps to body of hat. Body of hat is worked in the round. Follow either chart or written directions for pattern stitch.

HAT

Tie: With 2 smaller dpns, cast on 3 sts.

I-Cord: Rnd 1 (RS): K3, do not turn. Slide stitches to beginning of needle to work next round from RS.

Rep Rnd 1 until tie measures 6" / 15 cm. Turn at end of last round.

Earflap: Change to larger needle.

Next Row (RS): [K1, M1] twice, k1—5 sts.

Next Row (WS): K2, purl to last 2 sts, k2.

Inc Row (RS): K2, M1L, knit to last 2 sts, M1R, k2—2 sts inc'd. Rep the last 2 rows (11, 12) times more—(29, 31) sts.

Work even until earflap measures 4½" / 11.5 cm, end on WS. Break yarn and slip stitches to waste yarn.

Make second tie and earflap as for first.

Body of Hat: With circular needle, cast on (5, 7) sts, knit (29, 31) sts of first earflap, cast on (27, 31) sts, knit (29, 31) sts of second earflap, pm and join for working in the round—(90, 100) sts.

Rnd 1: Purl (7, 9), knit (25, 27), purl (31, 35), knit (25, 27), p2.

Rnd 2: Knit.



Rep these 2 rnds twice more.

Knit 5 rounds. At the end of the last round, remove BOR marker, knit (2, 3), replace BOR marker.

Establish Pattern Stitch: Rnd 1: * P1, k9; rep from * around.

Rnd 2: * K1, p1, k7, p1; rep from * around.

Rnd 3: * P1, k1, p1, k5, p1, k1; rep from * around.

Rnd 4: * [K1, p1] twice, k3, p1, k1, p1; rep from * around.

Rnd 5: * P1, k1; rep from * around.

Rnd 6: * K1, p1; rep from * around.

Rnd 7: * K2, [p1, k1] 4 times; rep from * around.

Rnd 8: * K3, [p1, k1] 3 times, k1; rep from * around.

Rnd 9: * K4, p1, k1, p1, k3; rep from * around.

Rnd 10: * K5, p1, k4; rep from * around.

Rep Rnds 1–10 rounds once more, then work even in St st until piece measures 5½" / 14 cm from cast-on edge.

Note: As you decrease for top, when there are too few stitches to fit comfortably on circular needle, change to larger dpns or preferred needles for working small circumferences.

Shape Top: Dec Rnd 1: * K8, k2tog, pm; rep from * around (omitting last pm where you already have BOR marker)—(81, 90) sts.

Knit 1 round.

Dec Rnd 2: * Knit to 2 sts before next marker, k2tog; rep from * around—(9, 10) sts dec'd.

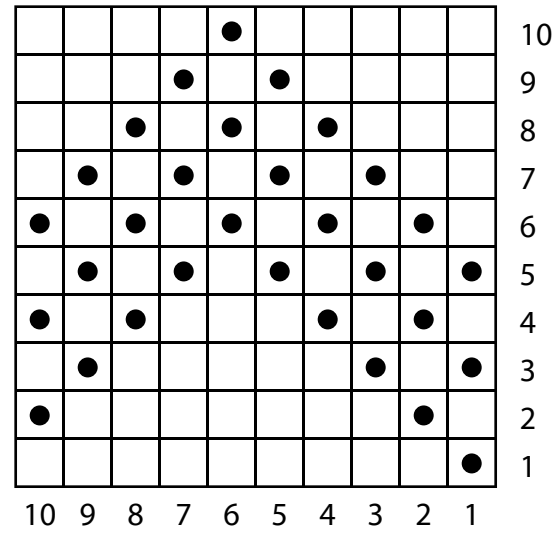
Rep last 2 rounds until (9, 10) sts remain. Break yarn leaving an 8" / 20.5 cm long end. Thread end into tapestry needle and draw through all stitches on needles. Pull up tightly and secure, then fasten off.

FINISHING

Tassels (Make 2): Cut thirty 5" / 12.5 cm strands of yarn and two 8" / 20.5 cm long strands. Tie 5" / 12.5 cm strands in center with one 8" / 20.5 cm strand. Fold 5" / 12.5 cm strands over tie and hold together. Wrap second 8" / 20.5 cm strand around held strands several times, then tie tightly, drawing ends into center of tassel. Fasten 1 tassel to the end of each Tie.



POPPY CHART



KEY TO CHART

□ knit

● purl

CHART NOTES

Work from right to left on every round.
Rep Rnds 1-10 twice.



STANDARD ABBREVIATIONS & TERMS

beg: beginning
BOR: beginning of round
CC: contrasting color
CDD: Centered Double Decrease—Slip 2 together (as if to k2tog), knit 1, pass the 2 slipped stitches over
cn: cable needle
dec: decrease
dpn(s): double pointed needle(s)
end on WS: end having just completed a Wrong Side row.
end on RS: end having just completed a Right Side row
Garter St: Knit EVERY row when working back and forth in rows. Knit 1 round, purl 1 round when working in the round.
inc: increase
k: knit
k tbl: knit through the back loop(s)
k2tog: knit 2 stitches together
k3tog: knit 3 stitches together
kfb: knit in the front and back of the next st
LH: left hand
LLI: Left Lifted Increase—Insert LH needle into the purl bump one row below the st just worked on the RH needle and knit into this st (1 st inc'd)
M1: Make 1—Pick up horizontal strand between stitch just worked and next stitch from front to back, place on left hand needle, knit this stitch through the back (1 stitch increased).
M1L: Make 1 Left—Work as for M1.
M1p: Make 1 purl—Pick up horizontal strand between stitch just worked and next stitch from front to back, place on left hand needle, purl this stitch through the back (1 stitch increased).
M1pL: Make 1 purl Left—Work as for M1p.
M1pR: Make 1 purl Right—Pick up horizontal strand between stitch just worked and next stitch from back to front, place on left hand needle, purl this stitch through the front (1 stitch increased).
M1R: Make 1 Right—Pick up horizontal strand between stitch just worked and next stitch from back to front, place on left hand needle, knit this stitch through the front (1 stitch increased).
MC: main color
p: purl
p tbl: purl through the back loop(s)
p2tog: purl 2 stitches together
p3tog: purl 3 stitches together
pat(s): pattern(s)
pm: place marker
psso: pass slipped stitch over knit stitch

rep: repeat
Rev St st: Reverse Stockinette Stitch—Purl 1 row, knit 1 row alternately when working back and forth in rows. The purl side is the right side of the work. Purl EVERY round when working in the round.
RH: right hand
RLI: Right Lifted Increase—Insert RH needle into the purl bump of the next st on the LH needle and knit into this st (1 st inc'd)
rnd(s): round(s)
RS: right side
sl: slip
sm: slip marker
SSK: Slip 2 stitches knitwise, insert point of left hand needle through fronts of these 2 stitches and knit 2 together.
SSP: Slip 2 stitches knitwise, transfer these 2 stitches back to left hand needle, purl 2 together through the back loops.
SSSK: Slip 3 stitches knitwise, insert point of left hand needle through fronts of these 3 stitches and knit 3 together.
st(s): stitch(es)
St st: Stockinette Stitch—Knit 1 row, purl 1 row alternately when working back and forth in rows. The knit side is the right side of work. Knit EVERY round when working in the round.
tbl: through back loop(s)
w&t: wrap and turn, a method of concealing a hole created in short row shaping. On RS rows: With yarn held in front, slip next stitch purlwise, then bring yarn between needles to the back. Slip that same stitch back to the left needle. Turn your work. On WS Rows: With yarn held in back, slip next stitch purlwise, then bring yarn between needles to the front. Slip that same stitch back to the left needle. Turn your work. Unless otherwise indicated, each time you come to a wrapped stitch when working subsequent rows, slip the wrap back over stitch and onto needle, then work the wrap together with its accompanying stitch.
WS: wrong side
wyib: with yarn in back
wyif: with yarn in front
yo: yarn over

QUESTIONS?

Scan the QR code for the Berroco Learning Center where you will find our fit guide, how-to videos, the complete glossary and more.

