

Designed by Mel Kennelly / Skill level: Intermediate



FINISHED MEASUREMENTS

Approximately 10" / 25.5 cm wide x
25" / 63.5 cm around

YARN

BERROCO VINTAGE (100 grs):

1 hank each # 5121 Sunny (C1) and
#5126 Watermelon (C2)

NEEDLES and NOTIONS

Knitting needles, size 8 / 5 mm
or size to obtain gauge

Darning needle

2 stitch markers

GAUGE

18 sts and 34 rows = 4" / 10 cm in
pattern stitch

*Gauge is measured after blocking.
To save time and ensure accurate
measurements, take time to check
gauge.*

Berroco Vintage®

Find this Yarn 🔍



BERROCO®



www.berroco.com



We recommend using yarns called for in our instructions. Every effort has been made to ensure that directions contained in this pattern are accurate and complete, however errors do occur. We cannot be responsible for variance of individual knitters, human or typographical errors.

All pattern PDFs are updated when corrections are made. In the event of finding an error, please make sure you've downloaded the most recent version.



CONSTRUCTION NOTES

Cowl is knit flat and then seamed. Pattern may be worked either from directions below or from following chart.

COWL

With C1, cast on 45 sts.

Rows 1 and 2: With C1, knit.

Row 3 (RS): With C2, k4, sl 1 wyib, k3, * sl 1 wyib, [k1, sl 1 wyib] twice, k3; rep from * to last 5 sts, sl 1 wyib, k4.

Row 4 (WS): With C2, k4, sl 1 wyif, * p3, sl 1 wyif, [k1, sl 1 wyif] twice; rep from * to last 8 sts, p3, sl 1 wyif, k4.

Row 5: With C1, k5, sl 3 wyib, * k5, sl 3 wyib, rep from * to last 5 sts, k5.

Row 6: With C1, k5, * sl 3 wyif, k5; rep from * to last 8 sts, sl 3 wyif, k5.

Row 7 and 8: Rep Rows 3 and 4.

Rows 9 and 10: With C1, knit.

Row 11: With C2, k4, sl 1 wyib, [k1, sl 1 wyib] twice, * k3, sl 1 wyib, [k1, sl 1 wyib] twice; rep from * to last 4 sts, k4.

Row 12: With C2, k4, * sl 1 wyif, [k1, sl 1 wyif] twice, p3; rep from * to last 9 sts, sl 1 wyif, [k1, sl 1 wyif] twice, k4.

Row 13: With C1, k9, * sl 3 wyib, k5; rep from * to last 4 sts, k4.

Row 14: With C1, k9, * sl 3 wyif, k5; rep from * to last 4 sts, k4.



Rows 15 and 16: Rep Rows 11 and 12.
Rep Rows 1–16 twelve times more. Bind off.

FINISHING

With C1, use mattress stitch to sew the short ends of cowl together. Weave in all ends and block as desired.

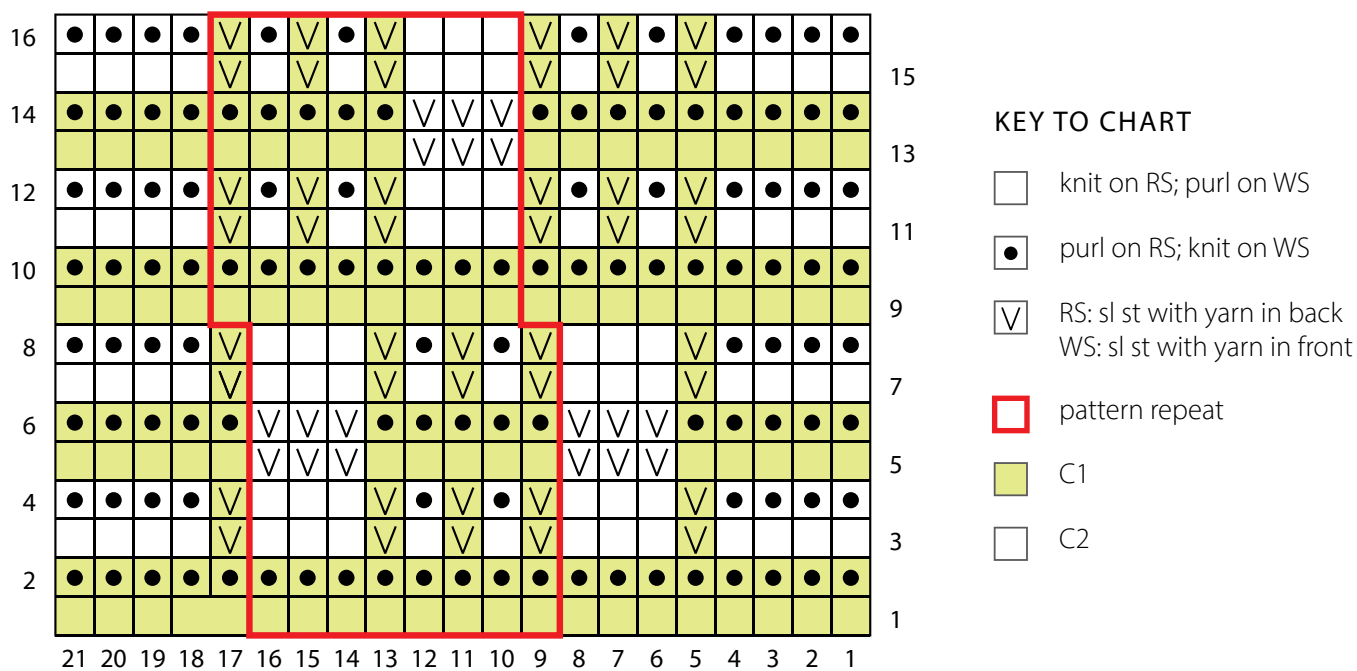


CHART NOTES

Work from right to left on RS rows
and from left to right on WS rows.

STANDARD ABBREVIATIONS & TERMS

beg: beginning
BOR: beginning of round
CC: contrasting color
CDD: Centered Double Decrease—Slip 2 together (as if to k2tog), knit 1, pass the 2 slipped stitches over
cn: cable needle
dec: decrease
dpn(s): double pointed needle(s)
end on WS: end having just completed a Wrong Side row.
end on RS: end having just completed a Right Side row
Garter St: Knit EVERY row when working back and forth in rows. Knit 1 round, purl 1 round when working in the round.
inc: increase
k: knit
k tbl: knit through the back loop(s)
k2tog: knit 2 stitches together
k3tog: knit 3 stitches together
kfb: knit in the front and back of the next st
LH: left hand
LLI: Left Lifted Increase—Insert LH needle into the purl bump one row below the st just worked on the RH needle and knit into this st (1 st inc'd)
M1: Make 1—Pick up horizontal strand between stitch just worked and next stitch from front to back, place on left hand needle, knit this stitch through the back (1 stitch increased).
M1L: Make 1 Left—Work as for M1.
M1p: Make 1 purl—Pick up horizontal strand between stitch just worked and next stitch from front to back, place on left hand needle, purl this stitch through the back (1 stitch increased).
M1pL: Make 1 purl Left—Work as for M1p.
M1pR: Make 1 purl Right—Pick up horizontal strand between stitch just worked and next stitch from back to front, place on left hand needle, purl this stitch through the front (1 stitch increased).
M1R: Make 1 Right—Pick up horizontal strand between stitch just worked and next stitch from back to front, place on left hand needle, knit this stitch through the front (1 stitch increased).
MC: main color
p: purl
p tbl: purl through the back loop(s)
p2tog: purl 2 stitches together
p3tog: purl 3 stitches together
pat(s): pattern(s)
pm: place marker

psso: pass slipped stitch over knit stitch
rep: repeat
Rev St st: Reverse Stockinette Stitch—Purl 1 row, knit 1 row alternately when working back and forth in rows. The purl side is the right side of the work. Purl EVERY round when working in the round.
RH: right hand
RLI: Right Lifted Increase—Insert RH needle into the purl bump of the next st on the LH needle and knit into this st (1 st inc'd)
rnd(s): round(s)
RS: right side
sl: slip
sm: slip marker
SSK: Slip 2 stitches knitwise, insert point of left hand needle through fronts of these 2 stitches and knit 2 together.
SSP: Slip 2 stitches knitwise, transfer these 2 stitches back to left hand needle, purl 2 together through the back loops.
SSSK: Slip 3 stitches knitwise, insert point of left hand needle through fronts of these 3 stitches and knit 3 together.
st(s): stitch(es)
St st: Stockinette Stitch—Knit 1 row, purl 1 row alternately when working back and forth in rows. The knit side is the right side of work. Knit EVERY round when working in the round.
tbl: through back loop(s)
w&t: wrap and turn, a method of concealing a hole created in short row shaping. On RS rows: With yarn held in front, slip next stitch purlwise, then bring yarn between needles to the back. Slip that same stitch back to the left needle. Turn your work. On WS Rows: With yarn held in back, slip next stitch purlwise, then bring yarn between needles to the front. Slip that same stitch back to the left needle. Turn your work. Unless otherwise indicated, each time you come to a wrapped stitch when working subsequent rows, slip the wrap back over stitch and onto needle, then work the wrap together with its accompanying stitch.
WS: wrong side
wyib: with yarn in back
wyif: with yarn in front
yo: yarn over

QUESTIONS?

Scan the QR code for the Berroco Learning Center where you will find our fit guide, how-to videos, the complete glossary and more.

