

Perseus

Designed by Åsa Buchta / Skill level: Intermediate



BERROCO®

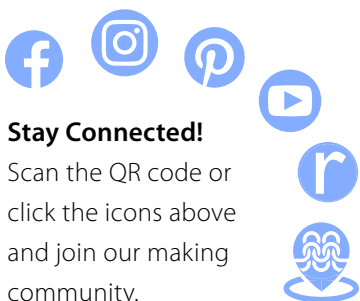
BERROCO.COM

Copyright 2025 in USA and Canada



We recommend using yarns called for in our instructions. Every effort has been made to ensure that directions contained in this pattern are accurate and complete, however errors do occur. We cannot be responsible for variance of individual knitters, human or typographical errors.

All pattern PDFs are updated when corrections are made. In the event of finding an error, please make sure you've downloaded the most recent version.



Stay Connected!

Scan the QR code or click the icons above and join our making community.



Share your project!
#berrocoyarn

SIZES

(Toddler, Child, Small, Medium, Large)

FINISHED MEASUREMENTS

(14, 16, 18, 20, 22)" / (35.5, 40.5, 45.5, 51, 56) cm around (unstretched) x (8½, 9, 9½, 10, 10½)" / (21.5, 23, 24, 25.5, 26.5) cm high

Shown in size Child and Medium.

YARN

BERROCO VINTAGE HANDPAINT (100 g): 1 hank for all sizes. Shown in #5230 Blushing Rose (Child) and #5227 Forest Canopy (Medium)

NEEDLES

16" / 40 cm circular needles, sizes 5 / 3.75 mm and 7 / 4.5 mm or size to obtain gauge

1 set double-pointed needles (or preferred needles for working small circumferences), size 7 / 4.5 mm

NOTIONS

Stitch markers (1 a different color for BOR) and tapestry needle

GAUGE

20 sts and 26 rounds = 4" / 10 cm in St st on larger needles

12 stitch pattern rep measures 2" / 5 cm (unstretched)

Gauge is measured after blocking. To save time and ensure accurate measurements, take time to check gauge.

Berroco Vintage® Handpaint

Find this Yarn

CONSTRUCTION NOTES

Hat is worked in the round from the bottom up.

SPECIAL ABBREVIATION

C6R: Sl 3 to cn and hold in BACK, k3, k3 from cn.

PATTERN STITCH

Multiple of 12 sts.

Rnds 1 & 2: * K6, p1, k4, p1; rep from * around.

Rnds 3 & 4: * K6, p6; rep from * around.

Rnd 5: * C6R, p1, k4, p1; rep from * around.

Rnd 6: * K6, p1, k4, p1; rep from * around.

Rnds 7 & 8: * K6, p6; rep from * around.

Rnds 9 & 10: * K6, p1, k4, p1; rep from * around.

Rnd 11: * C6R, p6; rep from * around.

Rnd 12: * K6, p6; rep from * around.

Repeat Rnds 1–12 for pattern.

INSTRUCTIONS

HAT

Using smaller circular needle, cast on (70, 80, 90, 100, 110) sts. Place BOR marker and join for working in the round.

Set Up Rib: Rnd 1: * K1, p1; rep from * around.

Work in ribbing as established until piece measures (2½, 3, 3½, 4, 4½)" / (6.5, 7.5, 9, 10, 11.5) cm from cast-on.

Change to larger needle.

Set Up Pattern: Inc Rnd: * [K1, M1, k1] twice, p6; rep from * around. (84, 96, 108, 120, 132) sts.

Next Rnd: * K6, p6; rep from * around.

Work Rnds 1–12 of Pattern Stitch twice, then work Rnds 1–6 of pattern. Hat should measure approximately (7, 7½, 8, 8½, 9)" / (18, 19, 20.5, 21.5, 23) cm from cast-on edge.

Note: As you decrease for crown, when there are too few stitches to fit comfortably on circular needle, change to dpns or preferred needles for working small circumferences.

Shape Crown: Rnd 1 (Dec Rnd): * K6, p2tog, p2, p2tog; rep from * around. (70, 80, 90, 100, 110) sts.

Rnd 2: * K6, p4; rep from * around.

Rnds 3 and 4: * K6, p1, k2, p1; rep from * around.

Rnd 5 (Dec Rnd): * Sl 3 sts to cn and hold in back, k2tog, k1, [k2tog, k1] from cn, p4; rep from * around. (56, 64, 72, 80, 88) sts.

Rnd 6: * K4, p4; rep from * around.

Rnds 7 and 8: * K4, p1, k2, p1; rep from * around.

Rnd 9 (Dec Rnd): * Sl 2 sts and hold in back, k2, k2 from cn, [p2tog] twice; rep from * around. (42, 48, 54, 60, 66) sts.

Rnd 10: * K4, p2; rep from * around.

Rnd 11 (Dec Rnd): * K4, p2tog; rep from * around. (35, 40, 45, 50, 55) sts.

Rnd 12: * K4, p1; rep from * around.

Rnd 13 (Dec Rnd): * Sl 2 sts to cn and hold in back, k2tog, k2tog from cn, p1; rep from * around. (21, 24, 27, 30, 33) sts.

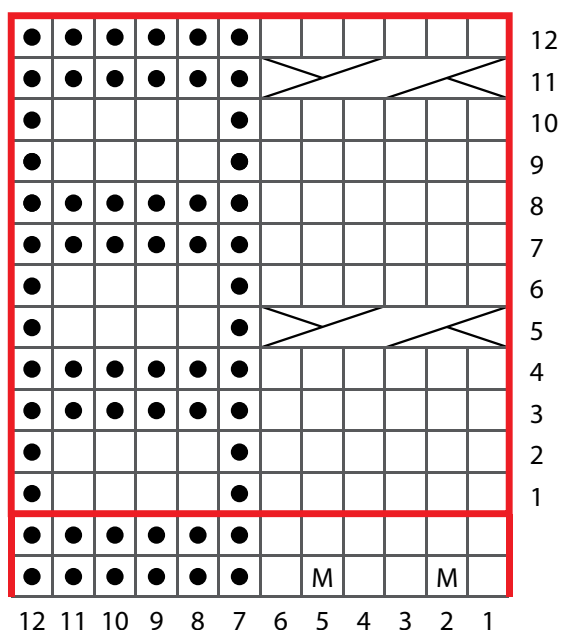
Rnd 14 (Dec Rnd): * CDD; rep from * around. (7, 8, 9, 10, 11) sts.

FINISHING

Break yarn leaving an 8" / 20 cm long end. Thread end into tapestry needle and draw through all stitches on needles. Pull up tightly and secure, then fasten off.



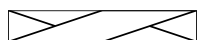
PERSEUS CHART



KEY TO CHART

knit on RS; purl on WS

purl on RS; knit on WS



C6R: sl 3 to cn and hold to BACK, k3, k3 from cn

M1

pattern repeat

CHART NOTES

Work from right to left on every round.

STANDARD ABBREVIATIONS & TERMS

beg: beginning

BOR: beginning of round

CDD: Centered Double Decrease—Slip 2 together (as if to k2tog), knit 1, pass the 2 slipped stitches over

cn: cable needle

dec: decrease

dpn(s): double pointed needle(s)

inc: increase

k: knit

k2tog: knit 2 stitches together

M1: Make 1—Pick up horizontal strand between stitch just worked and next stitch from front to back, place on left hand needle, knit this stitch through the back (1 stitch increased).

p: purl

p2tog: purl 2 stitches together

pm: place marker

rep: repeat

rnd(s): round(s)

sl: slip

sm: slip marker

st(s): stitch(es)

QUESTIONS?

Scan the QR code for the Berroco Learning Center where you will find our fit guide, how-to videos, the complete glossary and more.

