

Orofino

Designed by the Berroco Design Team / Skill level: Intermediate



BERROCO[®]

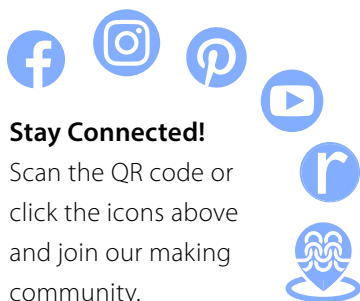
BERROCO.COM

Copyright 2026 in USA and Canada



We recommend using yarns called for in our instructions. Every effort has been made to ensure that directions contained in this pattern are accurate and complete, however errors do occur. We cannot be responsible for variance of individual knitters, human or typographical errors.

All pattern PDFs are updated when corrections are made. In the event of finding an error, please make sure you've downloaded the most recent version.



Stay Connected!

Scan the QR code or click the icons above and join our making community.



Share your project!
#berrocoyarn

SIZES

(1, 2, 3) [4, 5, 6]

FINISHED MEASUREMENTS

Bust: (38, 44¾, 51¼) [58, 64¾, 71½]" / (95, 112, 128) [145, 162, 179] cm

Length: (20½, 21, 21½) [22, 22½, 23]" / (51.5, 52.5, 54) [55, 56.5, 57.5] cm

Shown in size 2 (44¾" / 112 cm). Modeled with 12" / 30 cm ease.

Recommended ease: Approximately 6–12" / 15–30 cm positive ease.

YARN

BERROCO BOZZOLO (100 g): (3, 3, 4) [5, 5, 6] balls #10820 Luna

NEEDLES

29" / 75 cm circular needles, sizes 7 / 4.5 mm and 8 / 5 mm or size to obtain gauge

16" / 40 cm circular needle, size 7 / 4.5 mm

NOTIONS

1 stitch marker and waste yarn to hold stitches

GAUGE

19 sts and 27 rnds/rows = 4" / 10 cm in Pattern st on larger needle

Gauge is measured after blocking. To save time, and ensure accurate measurements, take time to check gauge.

Berroco Bozzolo™

Find this Yarn 

CONSTRUCTION NOTES

Body is worked in the round to armholes, divided for back and front, then worked flat to the end. Pattern Stitch may be worked either by using directions below or by following chart.

PATTERN STITCH (in the round)

Multiple of 16 sts + 10

Rnds 1, 3, 5, 7, 9, and 11 (RS): K1, * k8, [SSK, yo] 4 times; rep from * to last 9 sts, k9.

Rnd 2 and all even numbered rounds: Purl.

Rnds 13, 15, 17, 19, 21, and 23 (RS): K1, * [yo, k2tog] 4 times, k8; rep from * to last 9 sts, [yo, k2tog] 4 times, k1.

Rnd 24: Purl.

Rep Rnds 1–24 for Pattern St in the round.

PATTERN STITCH (worked flat)

Rows 1, 3, 5, 7, 9, and 11 (RS): K1, * k8, [SSK, yo] 4 times; rep from * to last 9 sts, k9.

Row 2 and all WS rows: Knit.

Rows 13, 15, 17, 19, 21, and 23 (RS): K1, * [yo, k2tog] 4 times, k8; rep from * to last 9 sts, [yo, k2tog] 4 times, k1.

Row 24: Knit.

Rep Rows 1–24 for Pattern St worked flat.

INSTRUCTIONS**BODY**

With smaller needle, cast on (180, 212, 244) [276, 308, 340] sts. Place maker and join for working in the round.

Set Up Rib: Rnd 1: * K2, p2; rep from * around.

Rep this round until piece measures 1" / 2.5 cm from cast-on. Change to larger needle.

Set Up Chart: Rnd 1: Begin working in Pattern St (in the round), using chart or written instructions, work the 16-st pattern rep (5, 6, 7) [8, 9, 10] times, then work to the end of the chart row; place marker for side, then work Rnd 1 once more, again working the pattern rep (5, 6, 7) [8, 9, 10] times, then work to the end of the chart row.

Continue working Pattern St as established, work even until piece measures approximately 12" / 30 cm from the cast-on edge, ending after completing Rnd 12 or 24.

Note: From here you will be working back and forth in rows.

Divide for Back and Front: Next Row (RS): Work (90, 106, 122) [138, 154, 170] sts, slip remaining stitches to waste yarn for front.

Back: Beginning with a WS row, work even in Pattern St (worked flat) until armholes measures (7, 7½, 8) [8½, 9, 9½]" / (17.5, 19, 20) [21.5, 22.5, 24] cm from the divide, end after completing a WS row.

Divide for Neck: Next Row (RS): Work (41, 49, 57) [65, 73, 81] sts in pattern, slip these stitches to waste yarn for Right Shoulder, bind off the next 8 sts, work to end in pattern as established. (41, 49, 57) [65, 73, 81] sts

Note: Shoulder and Neck are shaped at the same time. Please read ahead.

Left Back: Shape Shoulder and Neck: Working in pattern as established, bind off (7, 9, 11) [13, 15, 17] sts at beginning of the next WS row, then (6, 8, 10) [12, 14, 16] sts at beginning of the next 2 WS rows for shoulder. AT THE SAME TIME, bind off 8 sts at beginning of the next RS row, then 4 sts at beginning of the next 2 RS rows for neck. Bind off remaining (6, 8, 10) [12, 14, 16] sts.

Right Back: With WS facing, slip (41, 49, 57) [65, 73, 81] sts from waste yarn to larger needle. Work 1 WS row.

Shape Shoulder and Neck: Working in pattern as established, bind off (7, 9, 11) [13, 15, 17] sts at beginning of the next RS row, then (6, 8, 10) [12, 14, 16] sts at beginning of the next 2 RS rows for shoulder. AT THE SAME TIME, bind off 8 sts at beginning of the next WS row, then 4 sts at beginning of the next 2 WS rows for neck. Bind off remaining (6, 8, 10) [12, 14, 16] sts.

Front: With RS facing, slip (90, 106, 122) [138, 154, 170] Front sts from waste yarn to larger needle. Rejoin yarn and, beginning with a RS row, complete as for back.



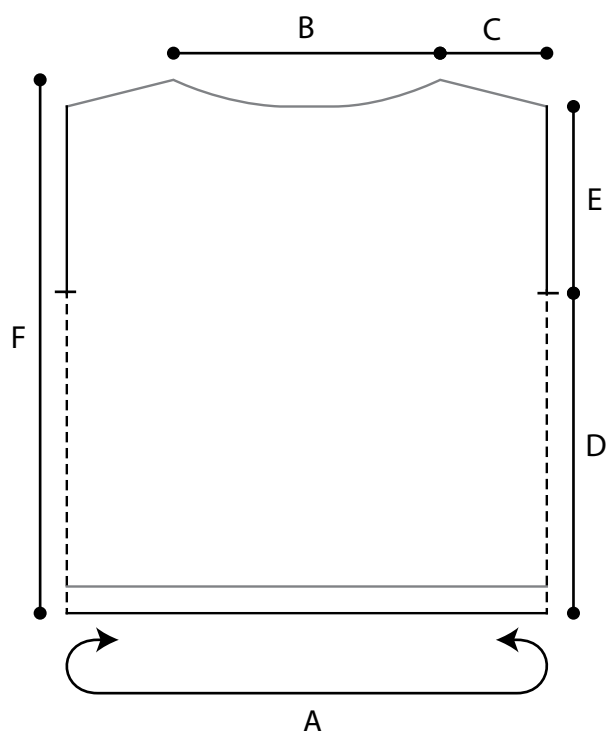
FINISHING

Sew shoulder seams.

Neck Edging: With circular needle, begin at left shoulder seam, pick up and knit approximately 76 sts around the neck edge, place marker and join for working in the round. Purl 1 round. Bind off knitwise.

Armhole Edging: With circular needle, begin at lower end of armhole, pick up and knit 2 sts for every 3 rows around the armhole edge, place marker and join for working in the round. Purl 1 round. Bind off knitwise. Repeat for the other armhole.

Weave in all ends and block as desired.



OROFINO MEASUREMENTS

A (Bust Circumference): (38, 44³/₄, 51¹/₄) [58, 64³/₄, 71¹/₂] / (95, 112, 128) [145, 162, 179] cm

B (Neck Width): 8¹/₂" / 21.5 cm

C (Shoulder Width): (5¹/₄, 7, 8¹/₂) [10¹/₄, 12, 13³/₄] / (13, 17.5, 21.5) [25.5, 30, 34.5] cm

D (Length to Underarms): 12" / 30 cm

E (Armhole Length): (7, 7¹/₂, 8) [8¹/₂, 9, 9¹/₂] / (17.5, 19, 20) [21.5, 22.5, 24] cm

F (Total Length): (20¹/₂, 21, 21¹/₂) [22, 22¹/₂, 23]" / (51.5, 52.5, 54) [55, 56.5, 57.5] cm

STANDARD ABBREVIATIONS & TERMS

k: knit

k2tog: knit 2 stitches together

p: purl

pat(s): pattern(s)

rep: repeat

rnd(s): round(s)

RS: right side

SSK: Slip 2 stitches knitwise, insert point of left-hand needle through fronts of these 2 stitches and knit 2 together.

st(s): stitch(es)

WS: wrong side

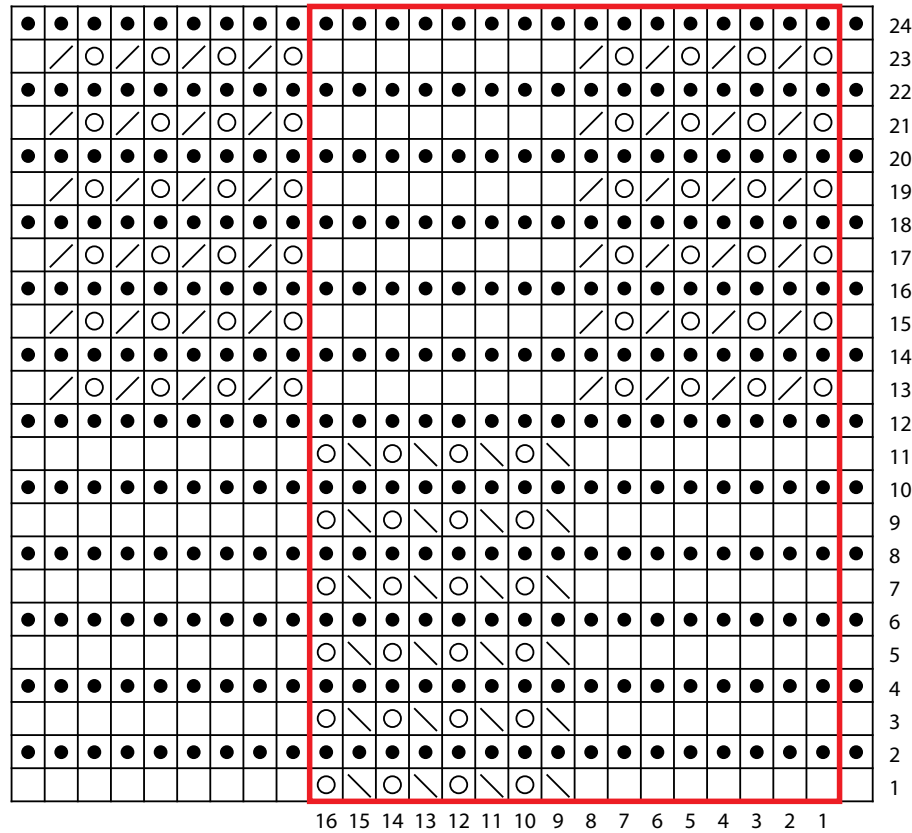
yo: yarn over

QUESTIONS?

Scan the QR code for the Berroco Learning Center where you will find our fit guide, how-to videos, the complete glossary and more.



PATTERN STITCH IN THE ROUND CHART



KEY TO CHARTS

- knit on RS; purl on
- WS purl on RS; knit
- on WS yarn over
- k2tog
- SSK
- pattern repeat

CHART NOTES

When working in the round, work from right to left on all rounds. When working flat, work from right to left on RS rows and from left to right on WS rows. Work repeat (marked in red) (5, 6, 7) [8, 9, 10] times.

PATTERN STITCH WORKED FLAT CHART

