

# Om

Designed by the Berroco Design Team / Skill level: Intermediate



## FINISHED MEASUREMENTS

Approximately 7" / 18 cm across x  
12" / 30 cm long (after felting)

## YARN

**BERROCO ULTRA ALPACA** (100 grs):  
1 hank each #6245 Pitch Black (C1)  
and #6209 Moonshadow (C2)

## NEEDLES and NOTIONS

16" / 40 cm circular needle, size 8 /  
5 mm or size to obtain gauge  
1 set double-pointed needles, size  
8 / 5 mm  
2 stitch markers (different colors)  
1 stitch holder  
Tapestry needle

## GAUGE

20 sts and 26 rnds = 4" / 10 cm in  
St st following chart (before felting)  
*To save time and ensure accurate  
measurements, take time to check  
gauge.*

**Berroco Ultra® Alpaca**

Find this Yarn 



**BERROCO®**

[www.berroco.com](http://www.berroco.com)

*We recommend using yarns called for in our instructions. Every effort has been made to ensure that directions contained in this book are accurate and complete, however errors do occur. We cannot be responsible for variance of individual knitters, human or typographical errors.*

*All pattern PDFs are updated when corrections are made. In the event of finding an error, please make sure you've downloaded the most recent version.*

## NOTE

When changing colors, hold yarn to the left and pick up new color from underneath. This twist yarn so there are no holes.

## OVEN MITT

With circular needle, using C1, cast on 82 sts. Place marker and join for working in the round. Knit 1 round, purl 1 round, knit 1 round. Join C2 and work even in St st (knit EVERY round), following chart until piece measures 9" / 23 cm from beginning.

**Divide for Thumb and Hand: Next Rnd:** Work 41 sts, break C2 and slip the next 41 sts onto holder for hand; using C1, cast on 41 sts—82 sts.

**Thumb:** Rejoin for working in the round. Join C2 and work even in St st, still following chart, until piece measures 2½" / 6 cm from stitches on holder.

**Note:** As you decrease, when there are not enough stitches to fit comfortably on circular needle, change to dpns, dividing stitches onto 3 needles.

**Shape Top: Next Rnd:** Work 41 sts, pm, work to end.

**Dec Rnd:** \* With C1, SSK, work following chart to 2 sts before next marker, with C1, k2tog, sm; rep from \* once more—78 sts.

Rep Dec Rnd every other round 12 times more—30 sts.

Break C2 and bind off with C1, removing markers. Fold bound-off stitches in half and sew together with C1.

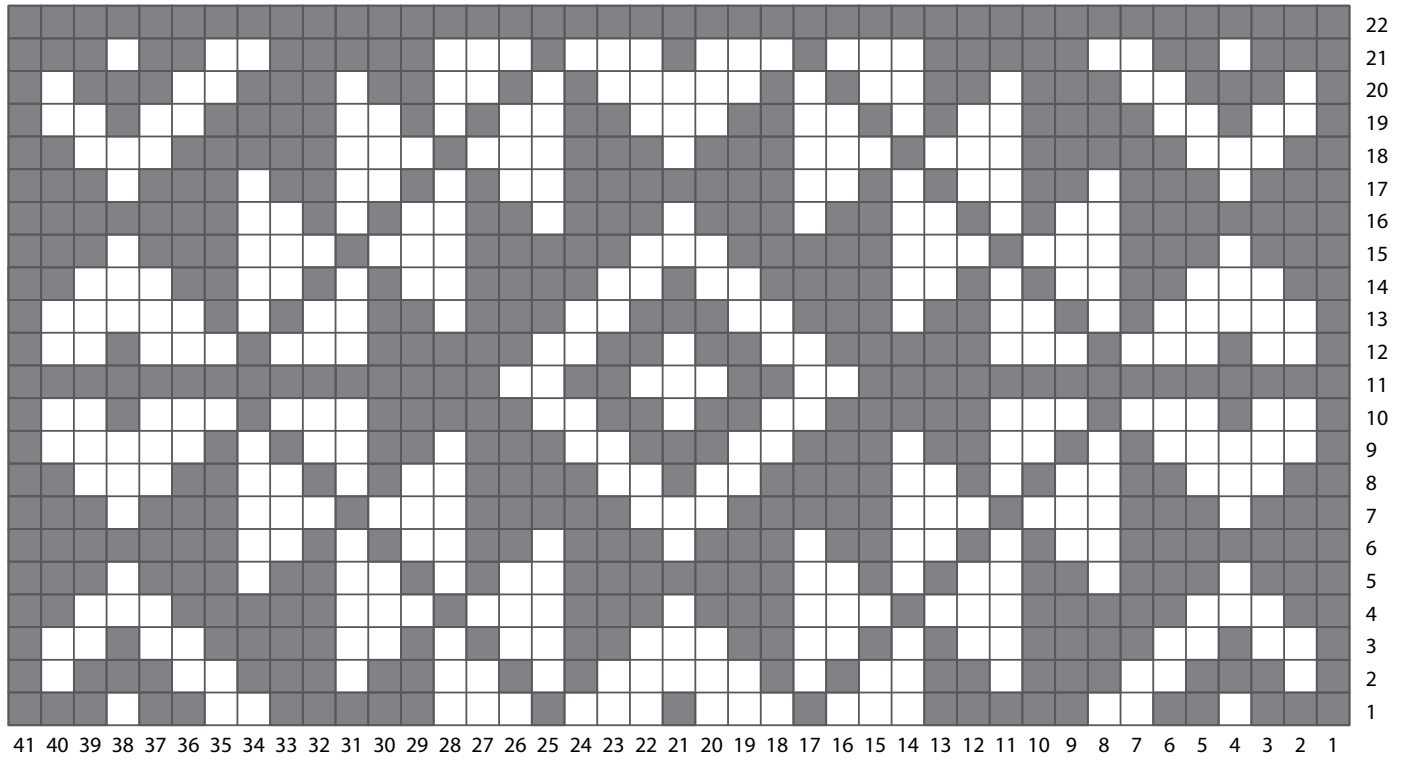
**Hand: Next Rnd:** Slip 41 sts from holder to circular needle, join A and cast on 41 sts—82 sts. Place marker and join for working in the round. Join C2 and work in St st, continuing to follow chart until piece measures 14" / 35 cm from beginning. Shape top as for thumb.

## FINISHING

Felt in top loading washing machine, using hot water and soap. Check piece often. When piece reaches desired size, remove from washer, shape by hand and allow to air dry. Piece will be very fuzzy and pattern will be indistinct. Insert hand into mitt and, using very sharp scissors, carefully trim extra fuzz all over until pattern becomes visible.



## OM CHART



### KEY TO CHART

■ knit with C1

□ knit with C2

### CHART NOTES

Work from right to left on every  
rnd, working each round twice.

## STANDARD ABBREVIATIONS & TERMS

**beg:** beginning  
**CC:** contrasting color  
**CDD:** Centered Double Decrease—Slip 2 together (as if to k2tog), knit 1, pass the 2 slipped stitches over  
**cn:** cable needle  
**dec:** decrease  
**dpn(s):** double pointed needle(s)  
**end on WS:** end having just completed a Wrong Side row.  
**end on RS:** end having just completed a Right Side row  
**Garner St:** Knit EVERY row when working back and forth in rows. Knit 1 round, purl 1 round when working in the round.  
**inc:** increase  
**k:** knit  
**k tbl:** knit through the back loop(s)  
**k2tog:** knit 2 stitches together  
**k3tog:** knit 3 stitches together  
**kfb:** knit in the front and back of the next st  
**LH:** left hand  
**LLI:** Left Lifted Increase—Insert LH needle into the purl bump one row below the st just worked on the RH needle and knit into this st (1 st inc'd)  
**M1:** Make 1—Pick up horizontal strand between stitch just worked and next stitch from front to back, place on left hand needle, knit this stitch through the back (1 stitch increased).  
**M1L:** Make 1 Left—Work as for M1.  
**M1p:** Make 1 purl—Pick up horizontal strand between stitch just worked and next stitch from front to back, place on left hand needle, purl this stitch through the back (1 stitch increased).  
**M1pL:** Make 1 purl Left—Work as for M1p.  
**M1pR:** Make 1 purl Right—Pick up horizontal strand between stitch just worked and next stitch from back to front, place on left hand needle, purl this stitch through the front (1 stitch increased).  
**M1R:** Make 1 Right—Pick up horizontal strand between stitch just worked and next stitch from back to front, place on left hand needle, knit this stitch through the front (1 stitch increased).  
**MC:** main color  
**p:** purl  
**p tbl:** purl through the back loop(s)  
**p2tog:** purl 2 stitches together  
**p3tog:** purl 3 stitches together  
**pat(s):** pattern(s)

**pm:** place marker  
**psso:** pass slipped stitch over knit stitch  
**rep:** repeat  
**Rev St st:** Reverse Stockinette Stitch—Purl 1 row, knit 1 row alternately when working back and forth in rows. The purl side is the right side of the work. Purl EVERY round when working in the round.  
**RH:** right hand  
**RLI:** Right Lifted Increase—Insert RH needle into the purl bump of the next st on the LH needle and knit into this st (1 st inc'd)  
**rnd(s):** round(s)  
**RS:** right side  
**sl:** slip  
**sm:** slip marker  
**SSK:** Slip 2 stitches knitwise, insert point of left hand needle through fronts of these 2 stitches and knit 2 together.  
**SSP:** Slip 2 stitches knitwise, transfer these 2 stitches back to left hand needle, purl 2 together through the back loops.  
**SSSK:** Slip 3 stitches knitwise, insert point of left hand needle through fronts of these 3 stitches and knit 3 together.  
**st(s):** stitch(es)  
**St st:** Stockinette Stitch—Knit 1 row, purl 1 row alternately when working back and forth in rows. The knit side is the right side of work. Knit EVERY round when working in the round.  
**tbl:** through back loop(s)  
**w&t:** wrap and turn, a method of concealing a hole created in short row shaping. On RS rows: With yarn held in front, slip next stitch purlwise, then bring yarn between needles to the back. Slip that same stitch back to the left needle. Turn your work. On WS Rows: With yarn held in back, slip next stitch purlwise, then bring yarn between needles to the front. Slip that same stitch back to the left needle. Turn your work. Unless otherwise indicated, each time you come to a wrapped stitch when working subsequent rows, slip the wrap back over stitch and onto needle, then work the wrap together with its accompanying stitch.  
**WS:** wrong side  
**wyib:** with yarn in back  
**wyif:** with yarn in front  
**yo:** yarn over

*Love Berroco patterns?  
 Sign up for our **KnitBits®** newsletter.*

