

# Minutia '23

Designed by the Berroco Design Team



Horchata

Wassail

Mulled Wine

Irish Coffee

Peppermint  
Patty

Six & Twenty

Bailey's

**Horchata**  
Berroco Vintage® Baby

Find this Yarn 

**Wassail**  
Berroco Vintage® Sock

Find this Yarn 

**Mulled Wine**  
Berroco Carousel™

Find this Yarn 

**Irish Coffee**  
Berroco Lanás® Light

Find this Yarn 

**Peppermint Patty**  
Berroco Ultra® Wool DK

Find this Yarn 

**Six & Twenty**  
Berroco Vintage® DK

Find this Yarn 

Berroco Vintage® Baby

Find this Yarn 

**Baileys**  
Berroco Pima Soft™

Find this Yarn 

# BERROCO®

 [www.berroco.com](http://www.berroco.com)



We recommend using yarns called for in our instructions. Every effort has been made to ensure that directions contained in this book are accurate and complete, however errors do occur. We cannot be responsible for variance of individual knitters, human or typographical errors.

All pattern PDFs are updated when corrections are made. In the event of finding an error, please make sure you've downloaded the most recent version.



## HORCHATA

Designed by Emily Sproul

### FINISHED MEASUREMENTS

Approximately 8" / 20.5 cm across (cuff to cuff) x 3¼" / 9.5 cm high

### YARN

**BERROCO VINTAGE BABY** (100 grs): small amount each CC1 #10072 Toast (C1), #10002 Pearl (C2), and #10005 Haze (C3)

### NEEDLES and NOTIONS

Knitting needles, size 5 / 3.75 mm or size to obtain gauge

### GAUGE

22 sts and 40 rows = 4" in Garter St

*Gauge is measured after blocking. To save time and ensure accurate measurements, take time to check gauge.*

### CONSTRUCTION NOTES

Sweater is worked in one piece from lower edge of front to lower edge of back. Side and sleeve seams are then seamed. Yarn, when not in use, should be carried loosely up side of work unless otherwise directed.

**Front:** With C1 cast on 20 sts.

Knit 4 rows.

With C2 knit 4 rows.

With C3 knit 4 rows.

Rep these 12 rows once more.

Break all yarns and start new ends.

**Add Sleeves:** With C1 cast on 10 sts on the right needle, knit across 20 sts. on the left needle, cast on 10 sts—40 sts.

Knit 3 rows.

With C2 knit 4 rows.

With C3 Knit 1 row.

**Shape Neck: Next Row:** With C3 knit 17 sts, bind off 6 sts, knit 17 sts.

**Next Row:** With C3 knit 17 sts, cast on 6, knit 17 sts.

**Back:** With C3 knit on row.

With C2 knit 4 rows.

With C1 Knit 3 rows.

**End Sleeves:** With C1 Bind off 10 sts, knit 20, bind off 10 sts.

Fasten off all yarns.

With C3 knit 4 rows.

With C2 knit 4 rows.

With C1 Knit 4 rows.

Rep the last 12 rows once more. Bind off.

### FINISHING

Sew body and down sleeve seams using mattress stitch.

Weave in all ends and block as desired.



## WASSAIL

Designed by Lorenette Haynes

### FINISHED MEASUREMENTS

5" / 12.7 cm wide by 2¾" / 7 cm long

### YARN

**BERROCO VINTAGE SOCK** (100 grs): small amount each #12070 Tide Pool (C1) and #12072 Dried Plum (C2)

### HOOKS and NOTIONS

Crochet hook, size 2.5 mm *or size to obtain gauge*  
Tapestry needle

### GAUGE

30 dc and 14 rows = 4" / 10 cm in dc

### CONSTRUCTION NOTES

Garment is worked in pieces for the front and back, then seamed at the shoulders, and the sleeves worked down. The collar is added then the sides are seamed. Carry the color not in work loosely across the back of the work. Change colors at the end of the row by working the last 2 loops of the last dc with the new color. Work between stitches, not into the tops of a stitch.

### BACK

With C1, ch 18 turn.

**Row 1:** Ch 1, sc in the second chain from the hook, sc in each stitch across. Turn. 17 sc

**Row 2:** Ch 3 (counts as dc throughout), skip 1 stitch, 3 dc in next stitch, \* skip 2 stitches, 3 dc in next stitch; repeat from \* across, dc in last stitch, change color (C2). Turn.

**Row 3:** Ch 3, 2 dc between first dc and next dc, \* skip next 3 dc, 3 dc between last dc and next dc; repeat from \* across, skip next 3 dc, 2 dc between last dc and beg ch-3, dc in beg ch-3, change color (C1). Turn.

**Row 4:** Ch 3, skip next 2 dc, \* 3 dc between last dc and next dc \*\*, skip next 3 dc; repeat from \* across, ending last repeat at \*\*, skip next 2 dc, dc in beg ch-3, change color (C2). Turn.

**Rows 5–10:** Repeat Rows 3 and 4 for pattern. Fasten off.

### FRONT

With C1, ch 18 turn.

**Row 1:** Ch 1, sc in the second chain from the hook, sc in each stitch across. Turn—17 sc.

**Row 2:** Ch 3 (counts as dc throughout), skip 1 stitch, 3 dc in next stitch, \* skip 2 stitches, 3 dc in next stitch; repeat from \* across, dc in last stitch, change color (C2). Turn.

**Row 3:** Ch 3, 2 dc between first dc and next dc, \* skip next 3 dc, 3 dc between last dc and next dc; repeat from \* across, skip next 3 dc, 2 dc between last dc and beg ch-3, dc in beg ch-3, change color (C1). Turn.

**Row 4:** Ch 3, skip next 2 dc, \* 3 dc between last dc and next dc \*\*, skip next 3 dc; repeat from \* across, ending last repeat at \*\*, skip next 2 dc, dc in beg ch-3, change color (C2). Turn.

**Rows 5–7:** Repeat Rows 3 and 4 for pattern. Last row ends on Row 3 repeat.

**Shape Neck: Left Front: Row 8:** Ch 3, skip next 2 dc, \* 3 dc between last dc and next dc \*\*, skip next 3 dc; repeat from \* once more, 1 dc between last dc and next dc, change color. Turn.

**Row 9:** Ch 3, 3 dc between last dc and next dc, skip next 3 dc, 2 dc between last dc and beg ch-3, dc in beg ch-3, change color. Turn.

**Row 10:** Ch 3, skip next 2 dc, \* 3 dc between last dc and next dc, dc in beg ch-3. Fasten off.

**Right Front: Row 8:** With C1, join yarn with a slip stitch in the space next to the previously worked dc in the center front. Ch 3, 3 dc between last dc, 2 dc between last dc and beg ch-3, dc in beg ch-3, change color. Turn.

**Row 9:** Ch 3, 2 dc between last dc and next dc, skip next 3 dc, 3 dc between last dc and next dc, dc in beg ch-3, change color. Turn.

**Row 10:** Ch 3, 3 dc between last dc and next dc, dc in beg ch-3. Fasten off.

Join shoulder seams of front to back.

### SLEEVES

**Row 1:** With C1 and right side facing, slip stitch in the fourth chain edge stitch from the hem to join yarn. Ch 3, 2 dc in the same space, \* 3 dc in the next ending chain space; repeat from \* twice more, change color. Turn.

**Row 2:** Ch 3, skip next 2 dc, \* 3 dc between last dc and next dc \*\*, skip next 3 dc; repeat from \* across, ending last repeat at \*\*, skip next 2 dc, dc in beg ch-3, change color (C2). Turn.

**Row 3:** Ch 3, 2 dc between first dc and next dc, \* skip next 3 dc, 3 dc between last dc and next dc; repeat from \* across, skip next 3 dc, 2 dc between last dc and beg ch-3, dc in beg ch-3, change color (C1). Turn.

**Rows 4–5:** Repeat Rows 2 and 3 for pattern. Fasten off.

## FINISHING

**Neck Edging:** With right side facing, attach yarn (C2) with a slip stitch in the first stitch of the back right side, sc in each dc across the top back edge, \* 3 sc in edge space; repeat from \* twice more, 1 sc in center space, 3 sc in edge space, repeat from \* 2 times more, slip stitch into beginning slip stitch. Fasten off.

Sew side seams from hem edge to sleeve cuff.

Weave in all ends and block as desired.



## MULLED WINE

*Designed by Alison Green*

### FINISHED MEASUREMENTS

Approximately 7½" / 21.5 cm across (cuff to cuff) x 3" / 9 cm high

### YARN

**BERROCO CAROUSEL** (100 grs): small amount #4438 Bingo

### NEEDLES and NOTIONS

Double-pointed needles (or preferred needles for small circumferences in the round), size 4 / 3.5 mm or size to obtain gauge

Stitch markers

### GAUGE

26 sts and 48 rows / rnds = 4" / 10 cm in Pattern Stitch using larger needle

*Gauge is measured after blocking. To save time and ensure accurate measurements, take time to check gauge.*

## CONSTRUCTION NOTES

Piece is worked from the top down in the round.

All slip stitches are slipped purlwise with yarn in back.

## YOKE

Cast on 24 sts. Divide sts evenly on dpns or preferred needles for working small circumferences. Place marker and join for working in the round. Knit 1 round. Work from written instructions below, or follow chart, working two repeats across each round.

**Rnd 1:** \* [Sl 1, p3] twice, sl 1, pm, p1, sl 1, p1, pm; rep from \* once more, omitting last pm.

**Rnd 2:** \* M1pL, [sl 1, p3] twice, M1pR, sm, p1, M1pL, sl 1, M1pR, p1, sm; rep from \* once more—32 sts.

**Rnd 3:** \* P1, [sl 1, p3] twice, sl 1, p1, sm, p2, sl 1, p2, sm; rep from \* once more.

**Rnd 4:** \* M1L, knit to marker, M1R, sm, k1, M1L, k3, M1R, k1, sm; rep from \* once more—40 sts.

**Rnd 5:** Knit.

**Rnd 6:** \* M1L, [sl 1, k3] 3 times, sl 1, M1R, sm, k1, M1L, sl 1, k3, sl 1, M1R, k1, sm; rep from \* once more—48 sts.

**Rnd 7:** \* P1, [sl 1, p3] 3 times, sl 1, p1, sm; rep from \* once more.

**Rnds 8 and 9:** Knit.

**Rnd 10:** \* M1L, [k3, sl] 3 times, k3, M1R, sm, k1, M1L, k3, sl 1, k3, M1R, k1; rep from \* once more—56 sts.

**Rnds 11, 12, and 13:** \* P4, [sl 1, p3] 3 times, p1, sm, p5, sl 1, p5; rep from \* once more.

**Rnd 14:** \* M1L, knit to marker, M1R, sm, knit to next marker (no incs), sm; rep from \* once more—60 sts.

**Rnd 15:** Knit.

**Rnd 16:** \* [K3, sl 1] 4 times, k3, sm, [k3, sl 1] twice, k3, sm; rep from \* once more.

**Divide for Body and Sleeves: Next Rnd:** \* [P3, sl 1] 4 times, p3, remove marker, using backward loop method, cast on 1 st, slip 11 sts to waste yarn for sleeve; rep from \* once more—40 sts.

**Body: Rnds 1 and 2:** Knit.

**Rnd 3:** K1, \* sl 1, k3; rep from \* to last 2 sts, k2.

**Rnds 4, 5, and 6:** P1, \* sl 1, p3; rep from \* to last 2 sts, p2.

**Rnds 7 and 8:** Knit.

**Rnd 9:** \* K3, sl 1; rep from \* to end.

**Rnd 10:** \* P3, sl 1; rep from \* to end.

**Rnds 11 and 12:** Knit.

**Rnd 13:** K1, \* sl 1, k3; rep from \* to last 2 sts, k2.

**Rnds 14, 15, and 16:** P1, \* [sl 1, p3]; rep from \* to last 2 sts, p2.

**Rnd 17:** Knit.

**Rnd 18:** Purl.

Rep Rnds 17 and 18 once more. Bind off knitwise.

## SLEEVES

Slip 11 sts from waste yarn to needle(s), dividing sts evenly. Join yarn in stitch cast on for underarm, pick up and knit 2 sts, [p3, sl 1] twice, p3, pick up and knit 1 st, place marker and join for working in the round—14 sts.

Rnds 1 and 2: Knit.

Rnd 3: \* K3, sl 1; rep from \* to last 2 sts, k2.

Rnds 4, 5, and 6: \* P3, sl 1; rep from \* to last 2 sts, p2.

Rnds 7 and 8: Knit.

Rnd 9: K1, sl 1, \* k3, sl 1; rep from \* to end.

Rnd 10: P1, sl 1, \* p3, sl 1; rep from \* to end.

Rnds 11 and 12: Knit.

Rnd 13: \* K3, sl 1; rep from \* to last 2 sts, k2.

Rnds 14, 15, and 16: \* P3, sl 1; rep from \* to last 2 sts, p2.

Rnds 17, 18, and 19: Knit.

Rnd 20: Purl.

Rnd 21: Knit.

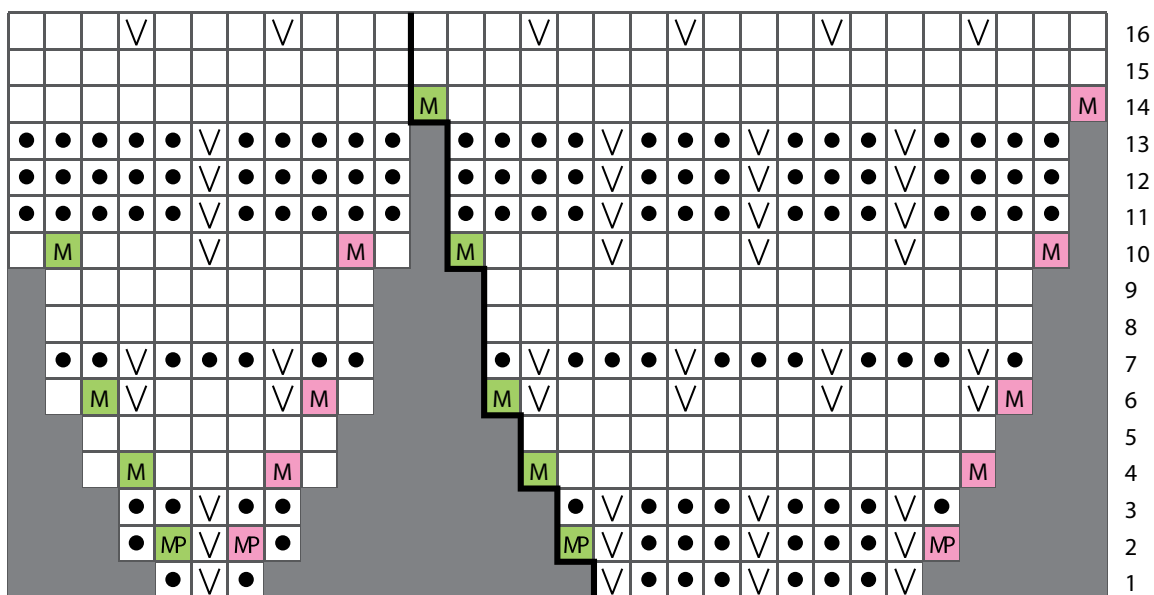
Rnd 22: Purl.

Bind off knitwise.

## FINISHING

Weave in all ends and block as desired.

## MULLED WINE CHART



### KEY TO CHART

- knit
- purl
- ▽ slip as if to purl, with yarn in back
- M M1L
- M M1R
- MP M1pL
- MP M1pR
- placeholder—no stitch

### CHART NOTES

Work from right to left on every round.  
 Work chart twice across each round.  
 Heavy black line indicates marker between body and sleeve stitches.



## IRISH COFFEE

Designed by Åsa Buchta

### FINISHED MEASUREMENTS

Approximately 7" / 18 cm across x 3" / 9 cm high

### YARN

**BERROCO LANAS LIGHT** (100 grs): small amount each #7800 Snow Day (MC) and #78136 Charcoal (CC)

### NEEDLES and NOTIONS

1 set double-pointed needles, or preferred needles for working small circumferences in the round, size 6 / 4 mm or size to obtain gauge

Stitch marker

Waste yarn to hold stitches

### GAUGE

23 sts and 36 rounds = 4" / 10 cm in St st

*Gauge is measured after blocking. To save time and ensure accurate measurements, take time to check gauge.*

### CONSTRUCTION NOTES

Sweater is knit from the neck down in the round.

### YOKE

With CC, cast on 20 sts. Place marker for BOR and knit 1 rnd.

**Inc Rnd:** \* K1, M1, k1; rep from \* around—30 sts.

**Next Rnd:** \* With CC, k1, with MC, k1, with CC, k1; rep from \* around.

Join MC.

**Inc Rnd:** \* With CC, M1, k1, with MC, k1, with CC, k1; rep from \* around—40 sts.

**Next Rnd:** \* With CC, k1, with MC, k3; rep from \* around.

**Next Rnd:** Knit all sts with MC.

**Next Rnd:** \* With CC, k1, with MC, k3; rep from \* around.

Break CC and continue with MC only.

**Inc Rnd:** \* k2, M1, k2; rep from \* around—50 sts.

**Next Rnd:** Knit.

**Inc Rnd:** \* K4, M1, k1; rep from \* around—60 sts.

Knit 3 rounds.

**Divide for Body and Sleeves: Next Rnd:** K9 for back, slip the next 12 sts to waste yarn for sleeve, k18 for front, slip the next 12 sts to waste yarn for sleeve, k9—36 sts.

**Body:** Work even in St st until body measures 1½" / 3.5 cm from underarm. Work 1 round in k1, p1 ribbing. Bind off in ribbing.

**Sleeves:** Slip sleeve stitches from waste yarn to needle.

Work even in St st until sleeve measures 1½" / 3.5 cm from underarm. Work 1 round in k1, p1 ribbing. Bind off in ribbing.

## FINISHING

Weave in all ends and block as desired.



## PEPPERMINT PATTY

Designed by Nadia Glaser

### FINISHED MEASUREMENTS

Approximately 6½" / 16.5 cm across (cuff to cuff) x 2¾" / 7 cm high

### YARN

**BERROCO ULTRA WOOL DK** (100 grs): small amount #83108 Frost (C1)

**BERROCO VINTAGE BABY** (50 grs): small amount #10020 Sunflower (C2) (optional for duplicate stitch design)

### NEEDLES and NOTIONS

1 set double-pointed needles, or preferred needles for working small circumferences in the round, size 6 / 4 mm or size to obtain gauge

### NEEDLES and NOTIONS

8 stitch markers, 1 different color for BOR

Tapestry needle

### GAUGE

22 sts and 32 rnds = 4" / 10 cm in St st

Gauge is measured after blocking. To save time and ensure accurate measurements, take time to check gauge.

## CONSTRUCTION NOTES

Sweater is worked in the round from the neck down.

### YOKE

With C1, cast on 16 sts. Place BOR marker and join for working in the round.

Work in k1, p1 ribbing for 2 rounds.

**Next Rnd:** Knit 2 (sleeve), pm, k1, pm, k4 (front), pm, k1, pm, k2 (sleeve), pm, k1, pm, k4 (back), pm, k1.

**Inc Rnd:** \* MIL, knit to marker, M1R, sm, k1, sm; repeat from \* 3 times more—8 sts inc'd.

**Next Rnd:** Knit, slipping markers.

Repeat the last 2 rounds 3 times more (48 sts – 10 for each sleeve, 12 each for front and back, 4 for raglan sts)

**Divide for Body and Sleeves: Next Rnd:** Place 10 sleeve stitches on waste yarn, next marker becomes new BOR, k1, remove marker, knit to next marker, remove marker, k1, remove marker, place 10 sleeve stitches on waste yarn, remove marker, k1, remove marker, knit to next marker, remove marker, k1—28 sts.

**Body:** Knit 9 rounds.

Work 2 rounds K1, p1 ribbing.

Bind off in ribbing.

**Sleeves:** Return 10 sleeve stitches to needles, pick up 1 st in underarm corner, k10, pick up 1 st in underarm corner—12 sts. Place marker and join for working in the round.

**Dec Rnd:** K2tog, knit to last 2 sts, SSK—10 sts.

Knit 11 rounds.

**Dec Rnd:** K2tog, [p1, k1] 3 times, p2tog—8 sts.

Bind off in ribbing.

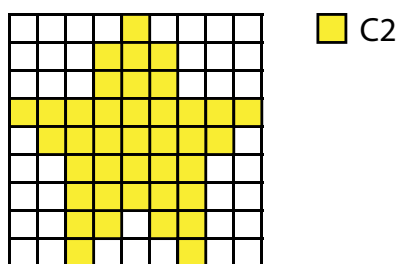
Repeat for second sleeve.

### FINISHING

Using tapestry needle threaded with C2, work duplicate stitch embroidery on front, following chart.

Weave in all ends and block as desired.

### PEPPERMINT PATTY CHART



## BAILEYS

Designed by Mel Kennelly

### FINISHED MEASUREMENTS

Approximately 3" / 9 cm across x 3" / 9 cm high

### YARN

**BERROCO PIMA SOFT** (50 grs): small amount each, C1 #4639 Basil, C2 #4645 Mint, C3 #4621 Fossil

### HOOKS and NOTIONS

Crochet hook, size 3.75 mm / F or size to obtain gauge

### GAUGE

16 fpdc and 16 rows = 4" / 10 cm in pattern

Gauge is measured after blocking. To save time and ensure accurate measurements, take time to check gauge.

## CONSTRUCTION NOTES

Back and front are worked flat, then sewn together.

## SPECIAL ABBREVIATIONS

**Fpdc (Front post dc):** Work dc around the front post of the row below.

**Bpdc (Back post dc):** Work dc around the back post of the row below.

## BACK

Using C1, ch 14.

Sc in 2nd ch from hook and in each ch across—13 sc. Turn.

**Row 1 (RS):** Ch 3, dc in each sc across. Turn.

**Row 2:** Ch 1, sc in each dc across. Turn.

**Row 3:** Ch 3 (counts as dc throughout), \* FPtc around dc below next sc, skip this sc, dc in next sc; rep from \* across. Turn.

Change to C2.

**Row 4:** Ch 1, sc in each st across. Turn.

**Row 5:** Ch 3, \* dc in next sc, FPtc around dc below next sc, skip this sc; rep from \* to last 2 sc, dc in each of last 2 sc. Turn.

**Shape Armholes: Next Row (WS):** Ch 1, sc in next st, sc2tog over next 2 sts, sc in each st to last 3 sts, sc2tog over next st, sc in last st—11 sc. Turn.

Change to C3.

**Next Row (RS):** Ch 3, \* dc in next sc, FPtc around dc below next sc, skip this sc; rep from \* to last 2 sc, dc in each of last 2 sc. Turn.

**Next Row (WS):** Ch 1, sc in each st across. Turn.

Change to C1.

**Next Row (RS):** Ch 3, \* FPtc around dc below next sc, skip this sc, dc in next sc; rep from \* across. Turn.

**Next Row (WS):** Ch 1, sc in each of the next 3 sts, sl st over the next 3 sts, sc in each of the next 4 sts. Fasten off.

## FRONT

Work as for back until Shape Armholes row has been worked—11 sc. Turn.

**Divide for Neck: Next Row (RS):** With C3, ch 3, [dc in next sc, FPtc around dc below next sc, skip this sc] twice, dc in next sc. Turn.

**Right Front: Next Row (WS):** Ch 1, sc in next st, sc2tog over next 2 sts, sc in each st to end of row. Turn.  
Change to C1.

**Next Row (RS):** Ch 3, [FPtc around dc below next sc, skip this sc, dc in next sc] twice. Turn.

**Next Row (WS):** Ch 1, in each st across. Fasten off.

**Left Front:** Reattach C3 to the end of row with WS facing.

**Next Row (WS):** Ch 3, [dc in next sc, BPtc around dc below next sc, skip this sc; rep from \* to last 2 sc, dc in each of last 2 sc] twice, dc. Turn.

**Next Row (RS):** Ch 1, sc in next st, sc2tog over next 2 sts, sc in each st to end of row. Turn.  
Change to C1.

**Next Row:** Ch3, [BPtc around dc below next sc, skip this sc, dc in next sc] twice. Turn.

**Next Row:** Ch 1, in each st across. Fasten off.

## FINISHING

Join shoulders and side seams.

**Neck Edging:** With RS facing, join C2 with a sl st to left shoulder seam. Sl st around entire neck edge, join with a sl st to beg sl st. Fasten off.



## SIX & TWENTY

*Designed by Casey Turgeon*

### FINISHED MEASUREMENTS

Approximately 8" / 20.5 cm wide (from cuff to cuff) x 3¾" / 9.5 cm high

### YARN

**BERROCO VINTAGE DK** (100 grs): small amount each #2170 Sapphire (MC) and #2100 Snow Day (CC)

### NEEDLES and NOTIONS

Knitting needles, size 6 / 4 mm *or size to obtain gauge*

Crochet hook, size 4 mm / G

Tapestry needle

### GAUGE

22 sts and 28 rows = 4" / 10 cm in St st

*Gauge is measured after blocking. To save time and ensure accurate measurements, take time to check gauge.*

### CONSTRUCTION NOTES

Body of sweater is made in one piece, starting at lower front edge and ending at lower back edge. Stitches for sleeves are picked up and worked down. Letter is added using the Duplicate Stitch method following desired chart.

### BODY

**Front:** With CC, cast on 19 sts. Knit 1 row on WS. Join MC and work in St st, following desired chart, until Row 26 has been completed, end on WS.

Work from here with MC only.

**Divide for Neck: Next Row (RS):** K6, bind off 7 sts, k6.

**Next Row (WS):** P6, cast on 7 sts, k6—19 sts.

**Back:** Work even in St st with MC for 26 rows, end on WS.

Change to C1 and purl 1 row. Bind off purlwise on WS.

Measure down 1¼" / 3 cm from neck on each side of back and front and mark for armholes.



## SLEEVES

**Stripe Sequence:** Work in St st, alternating 2 rows CC and 2 rows MC.

With RS facing, using CC, pick up and knit 15 sts between armhole markers.

With CC, purl 1 row. Join MC and work 2 rows St st.

**Dec Row (RS):** K1, k2tog, knit to the last 3 sts, SSK, k1—2 sts dec'd.

With CC, purl 1 row. Continuing to follow Stripe Sequence, rep Dec Row every 4th row twice more—9 sts.

Work even until 20 rows have been completed, end on RS. With CC, purl 1 row on RS, then bind off purlwise on WS.

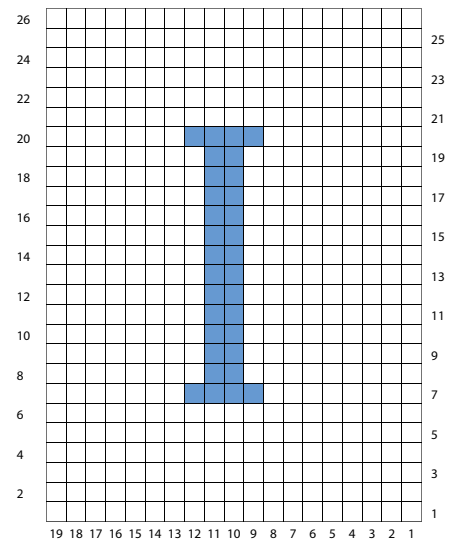
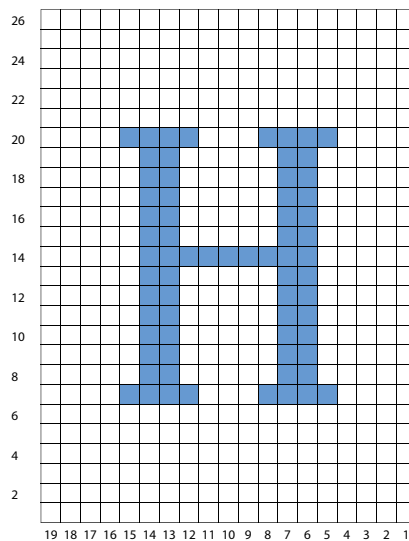
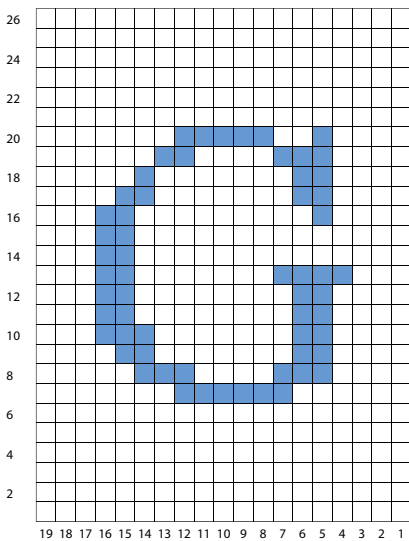
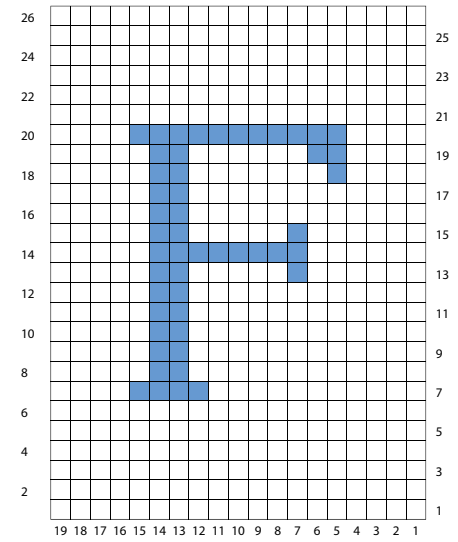
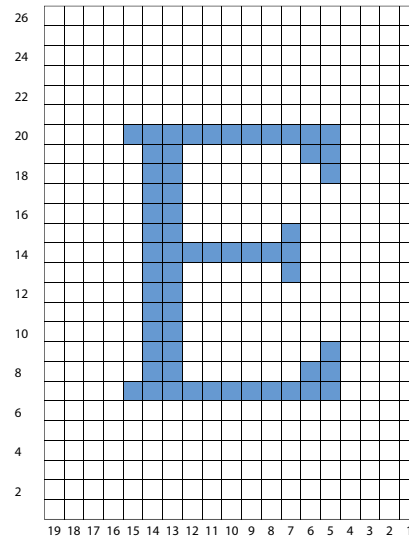
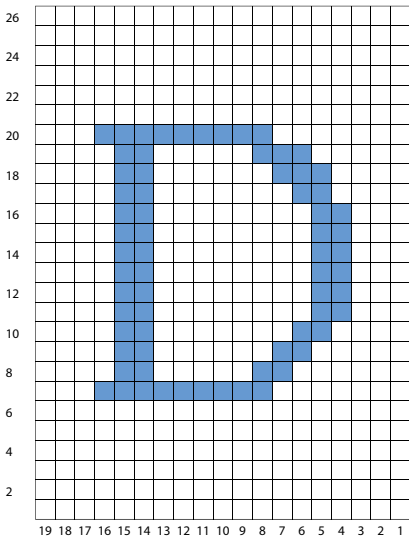
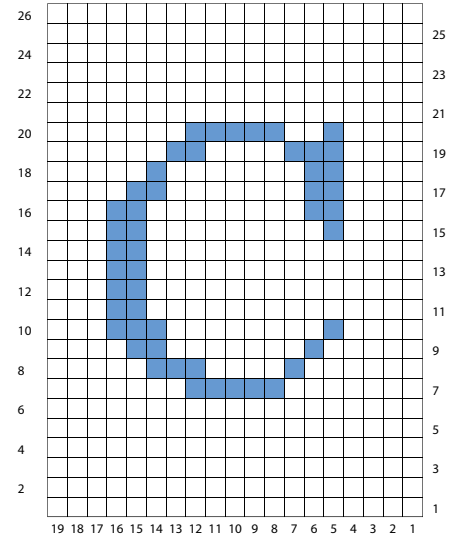
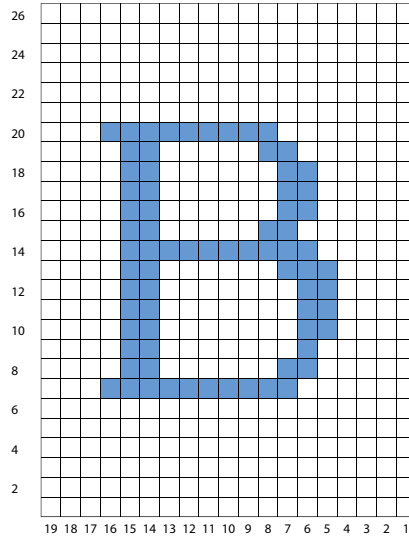
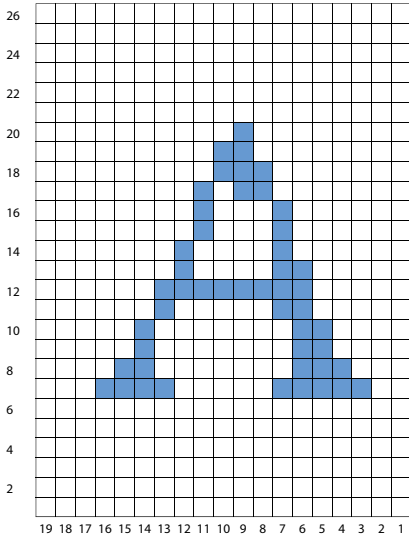
## FINISHING

**Neck Edging:** With RS facing, using crochet hook, join CC at either shoulder. Work in sc around entire neck edge, join with a sl st in beg sc. Fasten off.

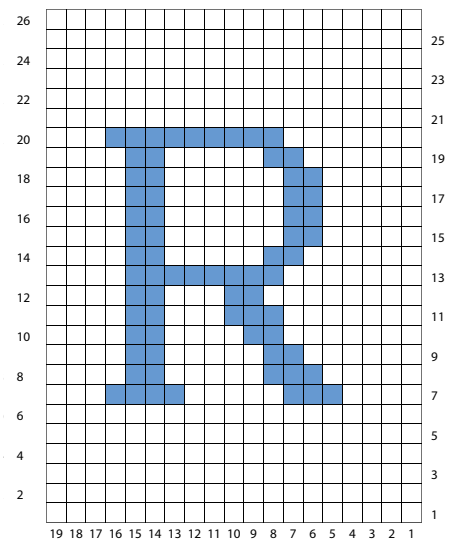
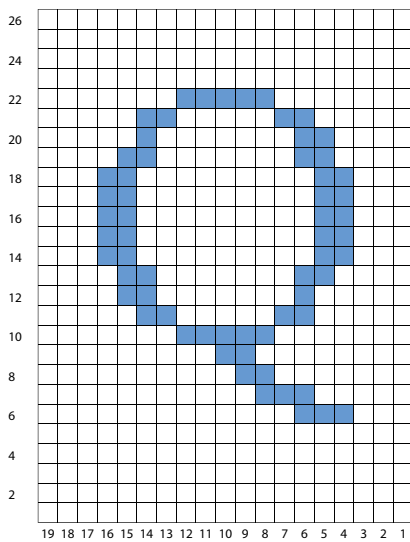
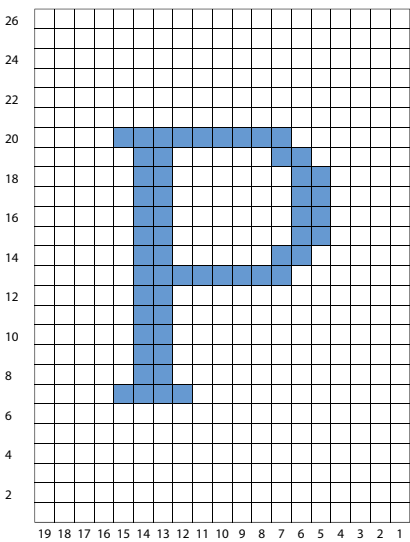
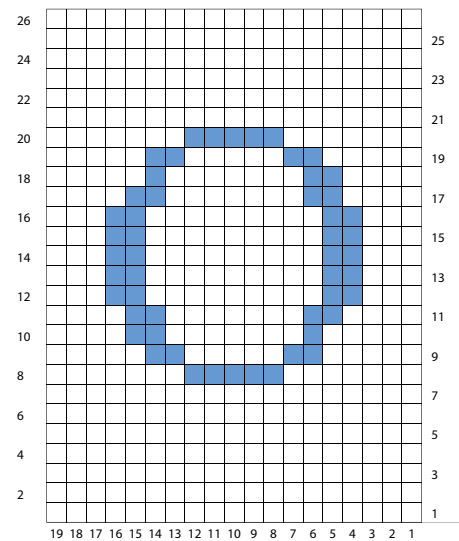
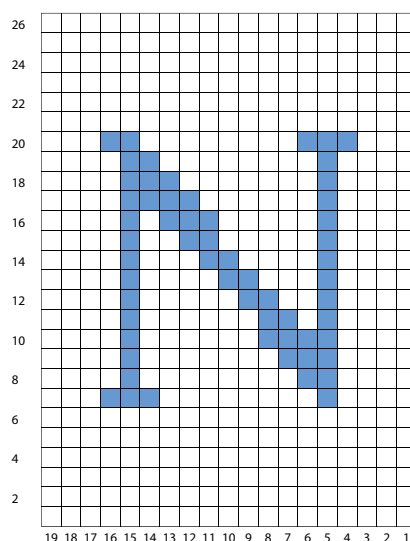
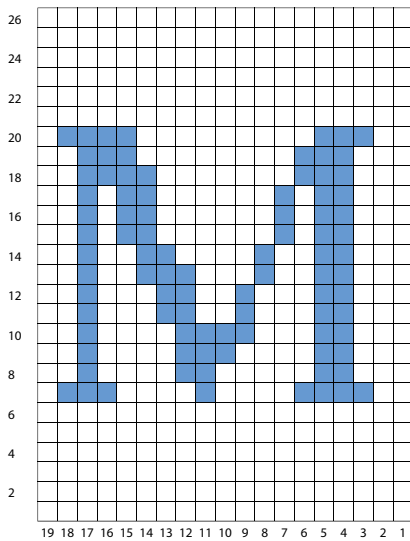
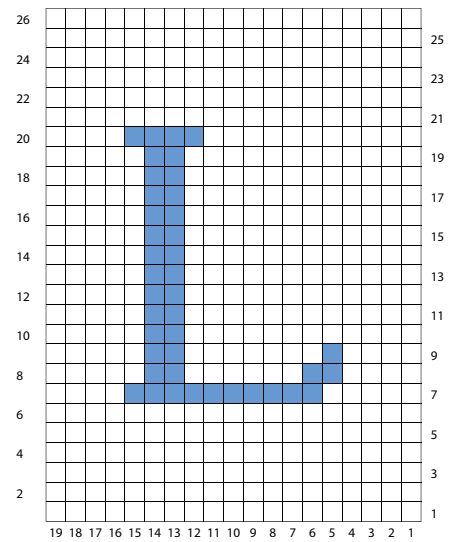
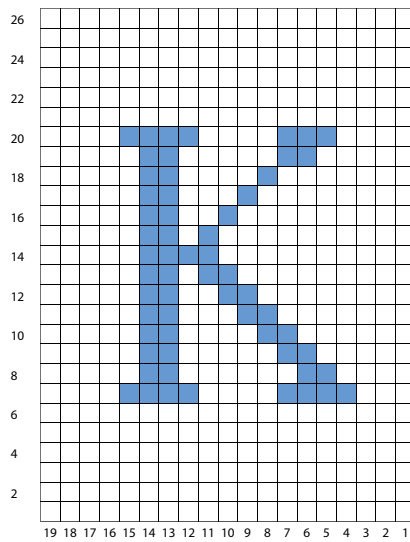
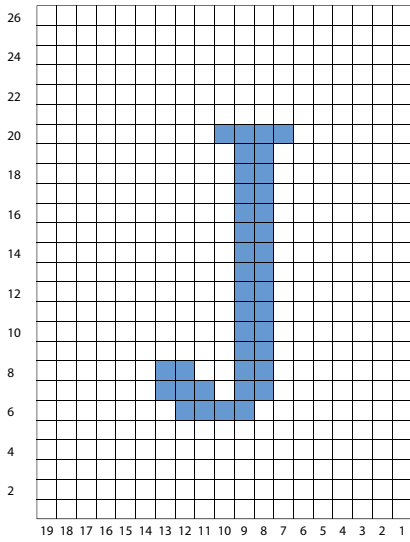
Use duplicate stitch to embroider letter of your choice on front of sweater using chart. Sew side and sleeve seams. Weave in all ends and block as desired



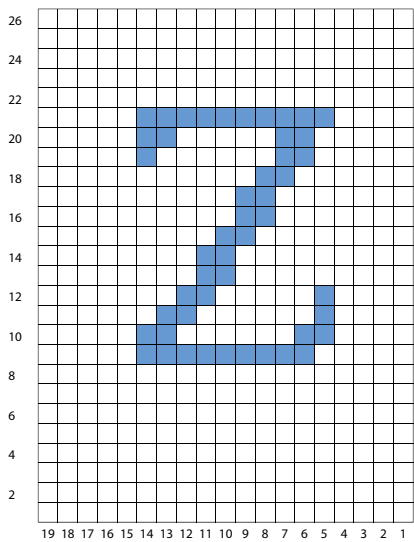
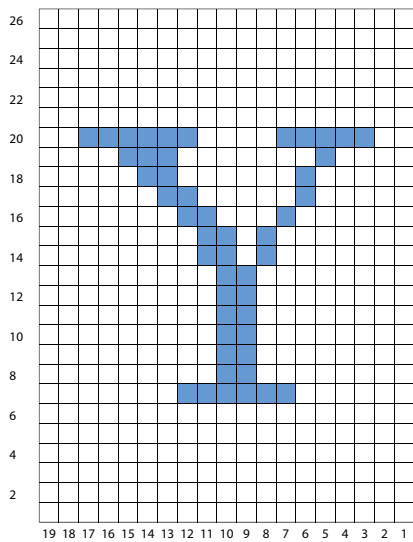
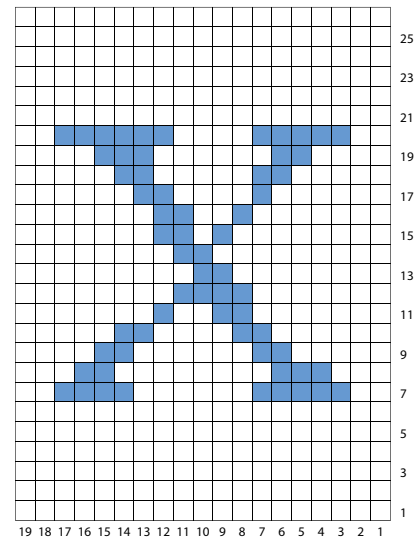
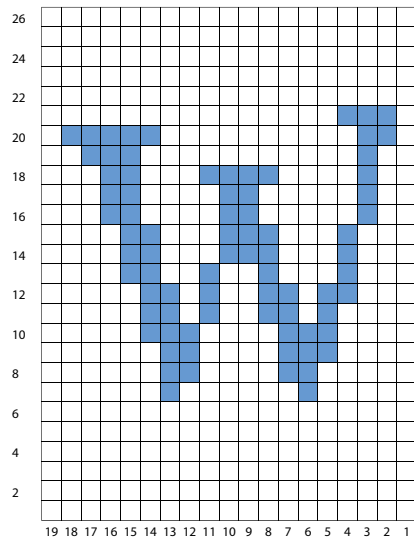
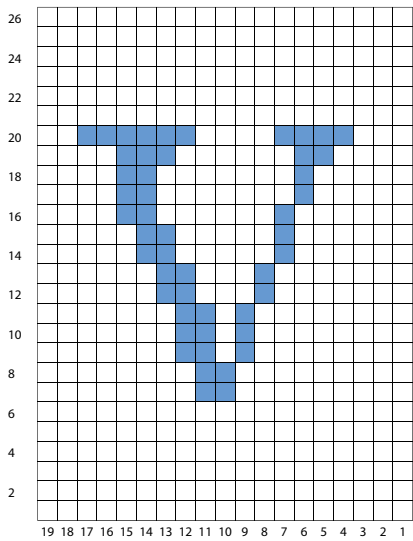
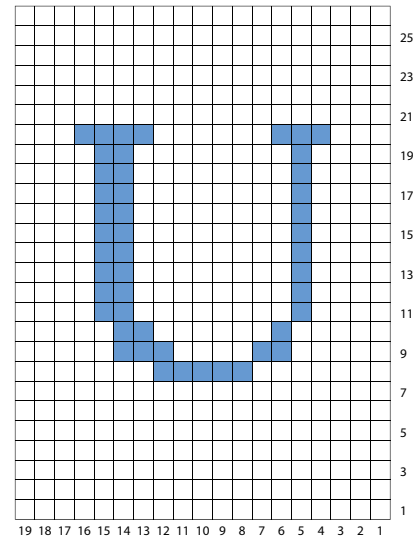
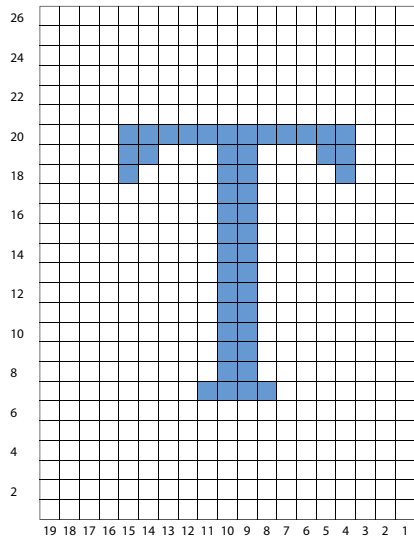
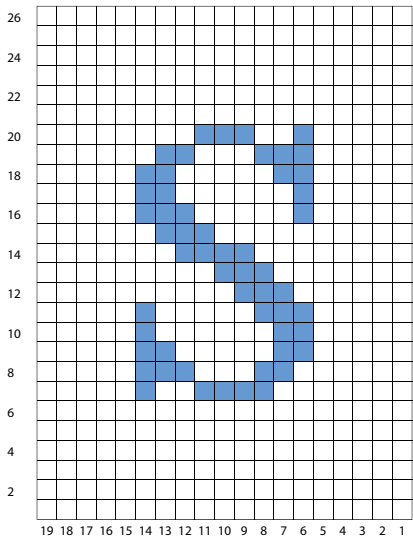
### SIX & TWENTY CHARTS



### SIX & TWENTY CHARTS



### SIX & TWENTY CHARTS



## STANDARD ABBREVIATIONS & TERMS

**beg:** beginning

**BOR:** beginning of round

**BPtc:** back post treble crochet

**CC:** contrasting color

**ch:** chain

**dc:** double crochet

**dec:** decrease

**dpn(s):** double pointed needle(s)

**end on WS:** end having just completed a Wrong Side row.

**end on RS:** end having just completed a Right Side row

**FPtc:** front post treble crochet

**Garter St:** Knit EVERY row when working back and forth in rows. Knit 1 round, purl 1 round when working in the round.

**inc:** increase

**k:** knit

**k2tog:** knit 2 stitches together

**M1:** Make 1—Pick up horizontal strand between stitch just worked and next stitch from front to back, place on left hand needle, knit this stitch through the back (1 stitch increased).

**M1L:** Make 1 Left—Work as for M1.

**M1pL:** Make 1 purl Left—Pick up horizontal strand between stitch just worked and next stitch from front to back, place on left hand needle, purl this stitch through the back (1 stitch increased).

**M1pR:** Make 1 purl Right—Pick up horizontal strand between stitch just worked and next stitch from back to front, place on left hand needle, purl this stitch through the front (1 stitch increased).

**M1R:** Make 1 Right—Pick up horizontal strand between stitch just worked and next stitch from back to front, place on left hand needle, knit this stitch through the front (1 stitch increased).

**MC:** main color

**p:** purl

**p2tog:** purl 2 stitches together

**pm:** place marker

**rep:** repeat

**rnd(s):** round(s)

**RS:** right side

**sc:** single crochet

**sc2tog:** single crochet 2 stitches together

**sl:** slip

**sm:** slip marker

**sp:** space

**SSK:** Slip 2 stitches knitwise, insert point of left hand needle through fronts of these 2 stitches and knit 2 together.

**st(s):** stitch(es)

**St st:** Stockinette Stitch—Knit 1 row, purl 1 row alternately when working back and forth in rows. The knit side is the right side of work. Knit EVERY round when working in the round.

**WS:** wrong side

### QUESTIONS?

Scan the QR code for the Berroco Learning Center where you will find our fit guide, how-to videos, the complete glossary and more.

