

Minutia '22

Designed by the Berroco Design Team



1 Fieval
Berroco Vento™

Find this Yarn 



2 Squeak
Berroco Lanás® Light

Find this Yarn 



3 Gadget
Berroco Lanás® Light

Find this Yarn 



BERROCO®

Yarn for all makers



www.berroco.com

We recommend using yarns called for in our instructions. Every effort has been made to ensure that directions contained in this book are accurate and complete, however errors do occur. We cannot be responsible for variance of individual knitters, human or typographical errors.

All pattern PDFs are updated when corrections are made. In the event of finding an error, please make sure you've downloaded the most recent version.



FIEVEL

Designed by Alison Green / Skill level: Intermediate

FINISHED MEASUREMENTS

Approximately 7" / 18 cm wide (across sleeves and body) x 3¼" / 8 cm long

YARN

BERROCO VENTO (50 grs): 1 ball #5656 Zephyr

NEEDLES and NOTIONS

1 set double-pointed needles, or preferred needles for working small circumferences, size 7 / 4.5 mm
Stitch markers (1 a different color for BOR)

GAUGE

22 sts and 30 rnds = 4" / 10 cm in St st

Gauge is measured after blocking. To save time and ensure accurate measurements, take time to check gauge.

CONSTRUCTION NOTES

Garment is worked in one piece in the round from the neck down.

YOKE

Cast on 14 sts. Place BOR marker and join for working in the round.

Rnds 1 and 2: * K1, p1; rep from * around.

Set Up Raglan: **Next Rnd:** K7, pm, M1, pm, p1, k2, M1, k3, p1, pm, M1—17 sts.

Establish Chart: **Next Rnd:** Knit to first marker, sm, k1, sm, work chart over 7 sts, sm, k1.

Raglan Inc Rnd 1: RLI, knit to first marker, LLI, sm, RLI, k1, LLI, sm, RLI, pm, work chart to marker, pm, LLI, sm, RLI, k1, LLI—25 sts.

Next Rnd: Knit to 3rd marker, sm, work chart to marker, sm, knit to end.

Raglan Inc Rnd 2: * RLI, knit to marker, LLI, sm; rep from * once more, RLI, knit to marker, sm, work chart to marker, sm, work to marker, LLI, sm, RLI, knit to marker, LLI—8 sts inc'd. Rep last 2 rounds 3 times more—57 sts.

Divide for Body and Sleeves: Knit to next marker, remove marker, slip 11 sts to waste yarn for sleeve, remove marker, knit to marker, sm, work chart to next marker, sm, knit to next marker, remove marker, slip 11 sts to waste yarn for sleeve—35 sts.

Body: Work even in pattern as established on 35 sts until body measures approximately 1½" / 4 cm from underarms, ending with Rnd 1 of chart.

Next Rnd: [P1, k1] 12 times, p1, k2tog, [p1, k1] to end—34 sts.

Next Rnd: [P1, k1] around.

Bind off in ribbing.

SLEEVES

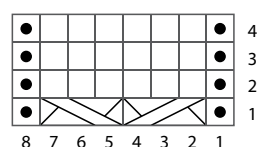
Return held sts for one sleeve to needle(s). Pick up and knit 1 st in underarm, knit 11 formerly held sts—12 sts.

Work in St st for 1¼" / 3 cm. Work 2 rnds in [k1, p1] ribbing. Bind off in ribbing.

FINISHING

Weave in all ends and block as desired.

FIEVEL CHART



KEY TO CHART

□ knit on RS; purl on WS

● purl on RS; knit on WS

⧻ sl 2 to cn and hold to BACK, k1, k2 from cn

⧻ sl 1 to cn and hold to FRONT, k2, k1 from cn

CHART NOTES

Work from right to left on RS rows and from left to right on WS rows.



SQUEAK

Designed by Åsa Buchta / Skill level: Intermediate

FINISHED MEASUREMENTS

Approximately 6" / 15 cm wide (across sleeves and body) x 3" / 7.5 cm high

YARN

BERROCO LANAS LIGHT (100 grs): 1 ball #7821 Sunny

NEEDLES and NOTIONS

1 set double-pointed needles, or preferred needles for working small circumferences, size 4 / 3.5 mm or size to obtain gauge

One 3/8" button

Waste yarn

Tapestry needle

GAUGE

24 sts and 32 rows = 4" / 10 cm in St st

Gauge is measured after blocking. To save time and ensure accurate measurements, take time to check gauge.

CONSTRUCTION NOTES

Garment is worked in one piece from the neck down.

YOKE

Cast on 26 sts.

Knit 2 rows.

Row 1 (RS Buttonhole Row): K3, [k2, yo, k1, yo, k2] 4 times, k1, yo, SSK—34 sts.

Row 2 and all WS rows: K3, purl to last 3 sts, k3.

Row 3: K3, [k2, yo, k3, yo, k2] 4 times, k3—42 sts.

Row 5: K3, [k2, yo, k5, yo, k2] 4 times, k3—50 sts.

Row 7: K3, [k5, yo, k1, yo, k5] 4 times, k3—58 sts.

Work 5 rows even, keeping 3 sts in Garter St at each front edge, end on WS.

Divide for Body and Sleeves: Next Row (RS): Knit 9, place the next 12 sts on waste yarn for sleeve, knit 16, place the next 12 sts on waste yarn for sleeve, knit 9—34 sts.

Body: Work even in St st, keeping 3 sts in Garter St at each front edge, until body measures 1½" / 4 cm from underarms, end on RS. Knit 2 rows. Bind off on WS.

Sleeves: Return 12 sts from waste yarn to DPNs. Join yarn at underarm and knit even in the round for 1½" / 4 cm. Purl 1 round, knit 1 round. Bind off purlwise.

FINISHING

Weave in all ends and block as desired. Sew on button opposite buttonhole. If desired, add a hanging loop to center back neck.



GADGET

Designed by Margaux Hufnagel / Skill level: Intermediate

FINISHED MEASUREMENTS

Approximately 9" / 23 cm wide (across sleeves and body) x 4½" / 11.5 cm long

YARN

BERROCO LANAS LIGHT (100 grs): 1 ball each #78140 Black Cherry (MC) and #78110 Grapefruit (CC)

NEEDLES and NOTIONS

1 set double-pointed needles, or preferred needles for working small circumferences, size 6 / 4 mm

Waste yarn to hold stitches

GAUGE

22 sts and 30 rows/rnds = 4" / 10 cm in St st

Gauge is measured after blocking. To save time and ensure accurate measurements, take time to check gauge.

CONSTRUCTION NOTES

Sleeves of garment are worked flat to underarms, then slipped to waste yarn. Body is worked in the round to underarms, then joined with sleeves to work yoke in the round.

SLEEVES (Make 2)

With CC, cast on 12 sts. Do not join. Work even in St st for 2" / 5 cm, end on WS. Break yarn and slip stitches to waste yarn for yoke.

BODY

With MC, cast on 40 sts. Place marker and join for working in the round.

Set Up Rib: Rnd 1: * K2, p2; rep from * around.

Rep this round 4 times more. Work even in St st until piece measures 2" / 5 cm from cast-on. Change to CC.

Yoke: Joining Rnd: [With CC, k20, k12 sts from waste yarn] twice—64 sts.

Dec Rnd: [SSK, k16, k2tog, SSK, k8, k2tog] twice—8 sts dec'd.

Knit 1 round.

Rep the last 2 rounds 5 times more—16 sts.

Knit 3 round.

Next Rnd: * K2tog; rep from * around—8 sts.

Work in k1, p1 ribbing for 4 rounds. Bind off in ribbing.

FINISHING

Sew sleeve seams. Weave in all ends and block as desired.

STANDARD ABBREVIATIONS & TERMS

beg: beginning
CC: contrasting color
CDD: Centered Double Decrease—Slip 2 together (as if to k2tog), knit 1, pass the 2 slipped stitches over
cn: cable needle
dec: decrease
dpn(s): double pointed needle(s)
end on WS: end having just completed a Wrong Side row.
end on RS: end having just completed a Right Side row
Garter St: Knit EVERY row when working back and forth in rows. Knit 1 round, purl 1 round when working in the round.
inc: increase
k: knit
k tbl: knit through the back loop(s)
k2tog: knit 2 stitches together
k3tog: knit 3 stitches together
kfb: knit in the front and back of the next st
LH: left hand
LLI: Left Lifted Increase—Insert LH needle into the purl bump one row below the st just worked on the RH needle and knit into this st (1 st inc'd)
M1: Make 1—Pick up horizontal strand between stitch just worked and next stitch from front to back, place on left hand needle, knit this stitch through the back (1 stitch increased).
M1L: Make 1 Left—Work as for M1.
M1p: Make 1 purl—Pick up horizontal strand between stitch just worked and next stitch from front to back, place on left hand needle, purl this stitch through the back (1 stitch increased).
M1pL: Make 1 purl Left—Work as for M1p.
M1pR: Make 1 purl Right—Pick up horizontal strand between stitch just worked and next stitch from back to front, place on left hand needle, purl this stitch through the front (1 stitch increased).
M1R: Make 1 Right—Pick up horizontal strand between stitch just worked and next stitch from back to front, place on left hand needle, knit this stitch through the front (1 stitch increased).
MC: main color
p: purl
p tbl: purl through the back loop(s)
p2tog: purl 2 stitches together
p3tog: purl 3 stitches together
pat(s): pattern(s)
pm: place marker

psso: pass slipped stitch over knit stitch
rep: repeat
Rev St st: Reverse Stockinette Stitch—Purl 1 row, knit 1 row alternately when working back and forth in rows. The purl side is the right side of the work. Purl EVERY round when working in the round.
RH: right hand
RLI: Right Lifted Increase—Insert RH needle into the purl bump of the next st on the LH needle and knit into this st (1 st inc'd)
rnd(s): round(s)
RS: right side
sl: slip
sm: slip marker
SSK: Slip 2 stitches knitwise, insert point of left hand needle through fronts of these 2 stitches and knit 2 together.
SSP: Slip 2 stitches knitwise, transfer these 2 stitches back to left hand needle, purl 2 together through the back loops.
SSSK: Slip 3 stitches knitwise, insert point of left hand needle through fronts of these 3 stitches and knit 3 together.
st(s): stitch(es)
St st: Stockinette Stitch—Knit 1 row, purl 1 row alternately when working back and forth in rows. The knit side is the right side of work. Knit EVERY round when working in the round.
tbl: through back loop(s)
w&t: wrap and turn, a method of concealing a hole created in short row shaping. On RS rows: With yarn held in front, slip next stitch purlwise, then bring yarn between needles to the back. Slip that same stitch back to the left needle. Turn your work. On WS Rows: With yarn held in back, slip next stitch purlwise, then bring yarn between needles to the front. Slip that same stitch back to the left needle. Turn your work. Unless otherwise indicated, each time you come to a wrapped stitch when working subsequent rows, slip the wrap back over stitch and onto needle, then work the wrap together with its accompanying stitch.
WS: wrong side
wyib: with yarn in back
wyif: with yarn in front
yo: yarn over

QUESTIONS?

Scan the QR code for the Berroco Learning Center where you will find our fit guide, how-to videos, the complete glossary and more.

