



BLOCKS BY MONTH/COLORS USED

Month	Skill/Type	Color(s)
January	Texture #1	C1
January	Texture #2	C4
February	Striped (6)	All colors
March	Texture #3	C5
March	Intarsia	C2, C3, C1
April	Lace #1	C5
April	Lace #2	C2
May	Cable #1	C1
May	Cable #2	C5
June	Cable #3	C2
June	Mosaic	C2, C3
July	Cable #4	C1
August	Stranded #1	C4, C3, C5
September	Stranded #2	C1, C2, C4
October	Cable/Lace	C4
November	Seaming	
December	Border & Finishing	C1, C3

FINISHED MEASUREMENTS

Completed Blanket: Approximately 52" x 64" /
132 cm x 163 cm

Each Block: Approximately 12" / 30.5 cm square

YARN

BERROCO VINTAGE (100 g): 6 hanks of C1, 4 hanks of C2, 3 hanks each of C3 and C4, and 2 hanks of C5.

Sample colors shown: #5101 Mochi (C1), #5172 Calico (C2), #51198 Acai (C3), #5105 Oats (C4), #51184 Twilight (C5)

NEEDLES

See individual block patterns for needle sizes; most blocks can be worked on straight or any length circular needles, sizes 7 / 4.5 mm (smaller needle) and 8 / 5 mm (larger needle) *or sizes to obtain gauge for each block; see below for general gauge guideline.*

A few blocks are made in the round, and require double-pointed needles (dpns), or preferred needles for working small circumferences.

Edgings will require a long circular needle (smaller size).

NOTIONS

Stitch markers, tapestry needle, cable needle (cn)

GAUGE

Each block has its own gauge. However, to determine which sizes to use for your smaller and larger size needles, use the ball band gauges for Vintage:

Gauge #1: 20 sts and 27 rows = 4" / 10 cm in St st using smaller needle

Gauge #2: 18 sts and 24 rows = 4" / 10 cm in St st using larger needle

Gauge is measured after blocking. To save time and ensure accurate measurements, take time to check gauge.

NOTE

Minor variations in block size—within about 1" / 2.5 cm in either direction—are okay. Once the blocks are all sewn together, these differences won't be noticeable.

Berroco Vintage®

Find this Yarn 

Block #14—Stranded

Designed by Mel Kennelly / Skill level: Intermediate



NEEDLES

Knitting needles, size 8 / 5 mm (larger needles) or size to obtain gauge

GAUGE

19 sts and 23 rows = 4" / 10 cm in Pattern St using larger needles

SKILLS USED

Cast on, knit stitch, purl stitch, following chart, stranded colorwork, binding off.

Note: Do not carry yarn across more than 3 sts without twisting on WS of work to secure floats. When changing colors, hold yarn to the left and pick up new color from underneath.

BLOCK #14 INSTRUCTIONS

Using C1, cast on 58 sts.

Working in St st, follow chart beginning with Row 1 (RS) until 69 rows have been completed. Piece should measure approximately 12" / 30 cm from cast-on. Bind off purlwise on WS.

FINISHING

Weave in all ends and block as desired.

STANDARD ABBREVIATIONS & TERMS

k: knit

p: purl

RS: right side

st(s): stitch(es)

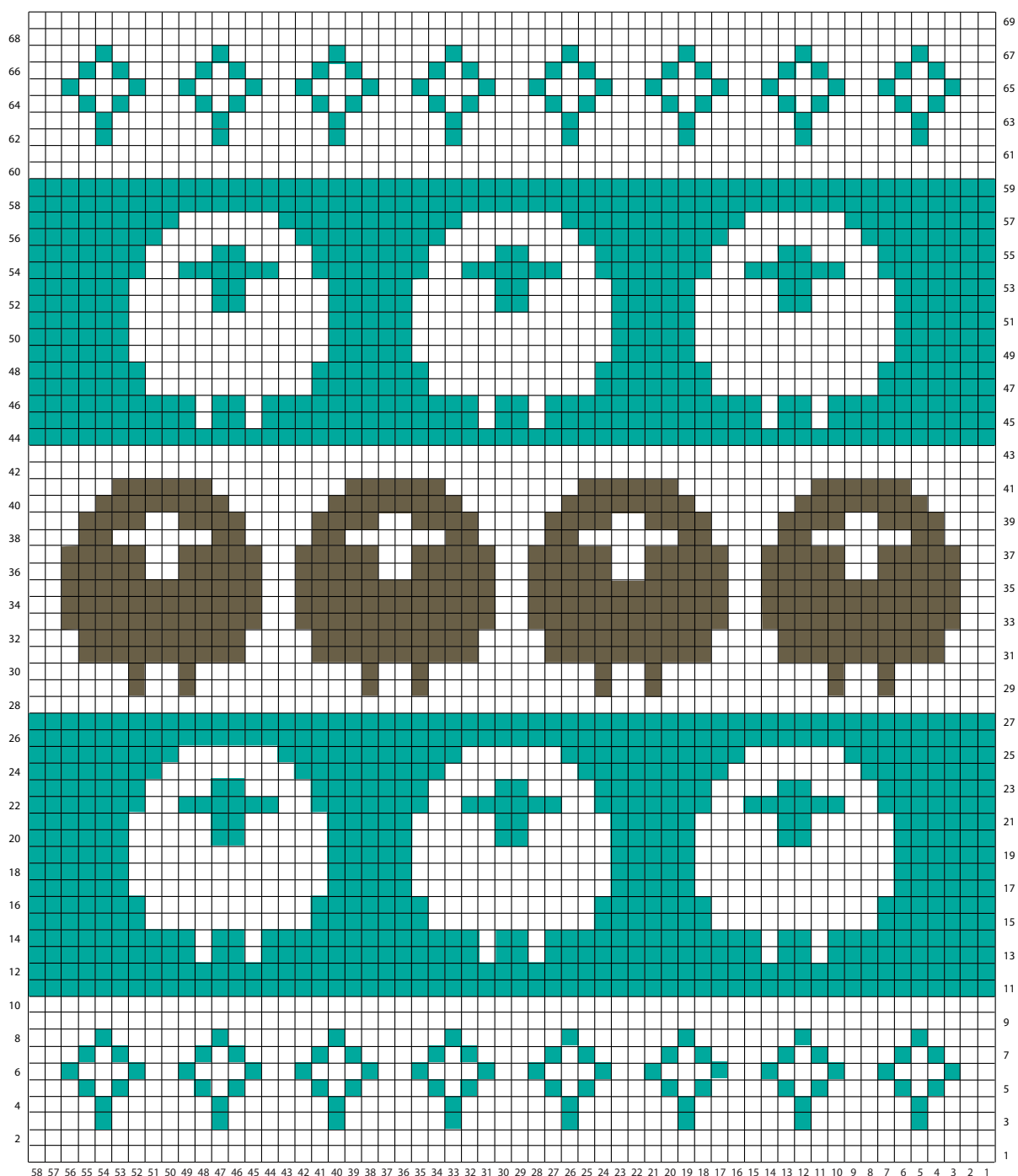
St st: Stockinette Stitch—Knit 1 row, purl 1 row alternately when working back and forth in rows. The knit side is the right side of work.

WS: wrong side

Learn to Catch Floats in Stranded Colorwork

Click here or scan the QR code to find a video explaining how to catch floats in stranded colorwork.





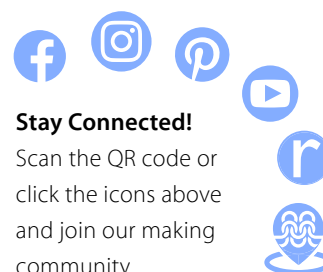
KEY TO CHART

- ☐ knit on RS; purl on WS
- ☐ C1
- ☒ C2
- ☒ C4

CHART NOTES

Work from right to left on RS rows and from left to right on WS rows.

Work entire chart in St st (knit on RS, purl on WS).



Stay Connected!

Scan the QR code or click the icons above and join our making community.



Share your project!

#berrocoyarn
#VintageMKAL25