

BLOCKS BY MONTH/COLORS USED

Month	Skill/Type	Color(s)
January	Texture #1	C1
January	Texture #2	C4
February	Striped (6)	All colors
March	Texture #3	C5
March	Intarsia	C2, C3, C1
April	Lace #1	C5
April	Lace #2	C2
May	Cable #1	C1
May	Cable #2	C5
June	Cable #3	C2
June	Mosaic	C2, C3
July	Cable #4	C1
August	Stranded #1	C4, C3, C5
September	Stranded #2	C1, C2, C4
October	Cable/Lace	C4
November	Seaming	
December	Border & Finishing	C1, C3

FINISHED MEASUREMENTS

Completed Blanket: Approximately 52" x 64" /
132 cm x 163 cm

Each Block: Approximately 12" / 30.5 cm square

YARN

BERROCO VINTAGE (100 g): 6 hanks of C1, 4 hanks of C2,
3 hanks each of C3 and C4, and 2 hanks of C5.

Sample colors shown: #5101 Mochi (C1), #5172 Calico
(C2), #51198 (C3), #5105 Oats (C4), #51184 Twilight (C5)

NEEDLES

See individual block patterns for needle sizes; most
blocks can be worked on straight or any length circular
needles, sizes 7 / 4.5 mm (smaller needle) and 8 / 5 mm
(larger needle) *or sizes to obtain gauge for each block; see
below for general gauge guideline.*

A few blocks are made in the round, and require double-
pointed needles (dpns), or preferred needles for working
small circumferences.

Edgings will require a long circular needle (smaller size).

NOTIONS

Stitch markers, tapestry needle, cable needle (cn)

GAUGE

Each block has its own gauge. However, to determine
which sizes to use for your smaller and larger size
needles, use the ball band gauges for Vintage:

Gauge #1: 20 sts and 27 rows = 4" / 10 cm in St st using
smaller needle

Gauge #2: 18 sts and 24 rows = 4" / 10 cm in St st using
larger needle

*Gauge is measured after blocking. To save time and ensure
accurate measurements, take time to check gauge.*

NOTE

Minor variations in block size—within about 1" / 2.5 cm
in either direction—are okay. Once the blocks are all
sewn together, these differences won't be noticeable.

Berroco Vintage®

Find this Yarn 

BLOCK #8–Cable

Designed by Nadia Glaser / Skill level: Intermediate



NEEDLES

Knitting needles, size 7 / 4.5 mm (smaller needles), or size to obtain gauge

NOTIONS

Cable needle (cn)

GAUGE

26 sts and 30 rows = 4" / 10 cm in Cable Pattern

SKILLS USED

Casting on, knit stitch, purl stitch, increases (M1R, M1L), decreases (k2tog, SSK), working cables (2/2 RC, 2/2 LC), binding off. Optional: reading charts.

SPECIAL ABBREVIATIONS

2/2 RC: Sl 2 sts to cn and hold in Back, k2, then k2 from cn.

2/2 LC: Sl 2 sts to cn and hold in Front, k2, then k2 from cn.

BLOCK #8 INSTRUCTIONS

With C1, cast on 66 sts.

Note: Pattern may be worked either by using directions below or by following chart.

Set Up:

Row 1 (WS): P1, k2, [p3, k2] 4 times, p9, k2, p9, k2, [p3, k2] 4 times, p1.

Row 2 (RS): K1, p2 [k1, M1L, k2, p2] 4 times, k7, M1L, k2, p2, k2, M1R, k7, p2 [k2, M1R, k1, p2] 4 times, k1. 76 sts.

Pattern Stitch:

Row 1 and all WS rows: P1, k2, [p4, k2] 4 times, [p10, k2] twice, [p4, k2] 4 times, p1.

Row 2 (RS): K1, p2, [2/2 RC, p2] 4 times, k6, 2/2 RC, p2, 2/2 LC, k6, [p2, 2/2 LC] 4 times, p2, k1.

Row 4: K1, p2, [k4, p2] 4 times, k4, 2/2 RC, k2, p2, k2, 2/2 LC, k4, [p2, k4] 4 times, p2, k1.

Row 6: K1, p2, [2/2 RC, p2] 4 times, k2, 2/2 RC, k4, p2, k4, 2/2 LC, k2, [p2, 2/2 LC] 4 times, p2, k1.

Row 8: K1, p2, [k4, p2] 4 times, 2/2 RC, k6, p2, k6, 2/2 LC, [p2, k4] 4 times, p2, k1.

Rep Rows 1–8 of pattern stitch until piece measures just under 12" / 30.5 cm, end after completing a WS row.

Note: Decreases are worked as you bind off to return stitch count to the cast on number.

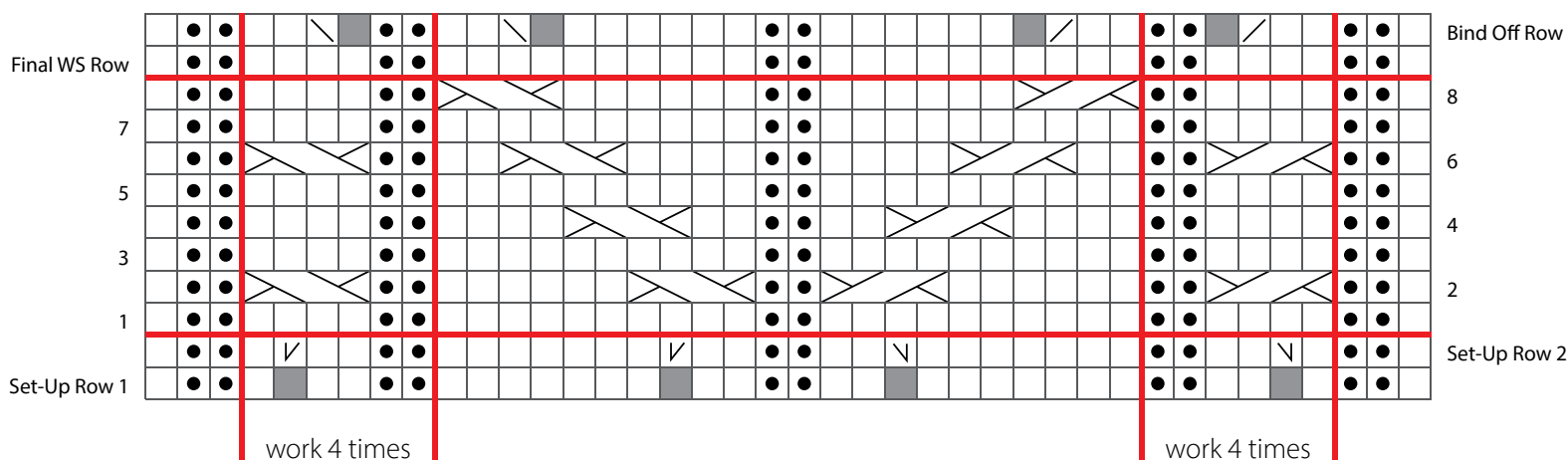
Decreasing Bind Off Row (RS): K1, p2, [k2, k2tog, p2] 4 times, k2, k2tog, k6, p2, k6, SSK, k2, [p2, SSK, k2] 4 times, p2, k1.

Let's Demystify 'No Stitch'!

Click here or scan the QR code to find a video explaining the reason behind 'no stitch' in charts.



BLOCK #8 CHART



KEY TO CHART

- ☐ knit on RS; purl on WS
- ☒ purl on RS; knit on WS
- 2/2 RC: sl 2 to cn and hold to BACK, k2, k2 from cn
- 2/2 LC: sl 2 to cn and hold to FRONT, k2, k2 from cn
- M1L
- M1R
- k2tog
- SSK
- placeholder—no stitch
- pattern repeat

CHART NOTES

Work from right to left on RS rows and from left to right on WS rows.

Repeat the pattern repeat on each side of chart 4 times each row.

Work Set-Up Rows 1 and 2 once only, then repeat Rows 1–8 for pattern and end with Final WS Row and Bind off Row.

M1L and M1R Increases

Click here or scan the QR code to find a video on how to work these common increases.



BLOCK #9—Cable

Designed by Åsa Buchta / Skill level: Intermediate



NEEDLES

Knitting needles, size 7 / 4.5 mm (smaller needles), or size to obtain gauge

NOTIONS

Cable needle (cn)

GAUGE

21 sts and 28 rows = 4" / 10 cm in Cable Pattern

SKILLS USED

Casting on, knit stitch, purl stitch, increasing (M1), working cables (3/3 RC, 3/3 LC), decreasing (k2tog), binding off.
Optional: reading charts.

SPECIAL ABBREVIATIONS

3/3 RC: Sl 3 sts to cn and hold in Back, k3, then k3 from cn.

3/3 LC: Sl 3 sts to cn and hold in Front, k3, then k3 from cn.

BLOCK #9 INSTRUCTIONS

With C5, cast on 57 sts.

Note: Pattern may be worked either by using directions below or by following chart.

Set Up:

Row 1 (WS): P8, * k1, p7; rep from * 4 more times, k1, p8.

Row 2 (RS): K8, * p1, k2, M1, k3, M1, k2, p1, k7; rep from * twice more, k1. 63 sts.

Row 3: P8, * k1, p9, k1, p7; rep from * twice more, p1.

Pattern St:

Row 4 (RS): K8, * p1, k9, p1, k7; rep from * twice more, k1.

Learn how to work cables!

Click here or scan the QR code to find a video breaking down basic cable crosses to help you master this skill!



Row 5 (WS): K9, * p9, k9; rep from * twice more.

Row 6: K8, * p1, 3/3 RC, k3, p1, k7; rep from * twice more, k1.

Row 7: P8, * k1, p9, k1, p7; rep from * twice more, p1.

Row 8: K8, * p1, k9, p1, k7; rep from * twice more, k1.

Row 9: K9, * p9, k9; rep from * twice more.

Row 10: K8, * p1, k3, 3/3 LC, p1, k7; rep from * twice more, k1.

Row 11: P8, * k1, p9, k1, p7; rep from * twice more, p1.

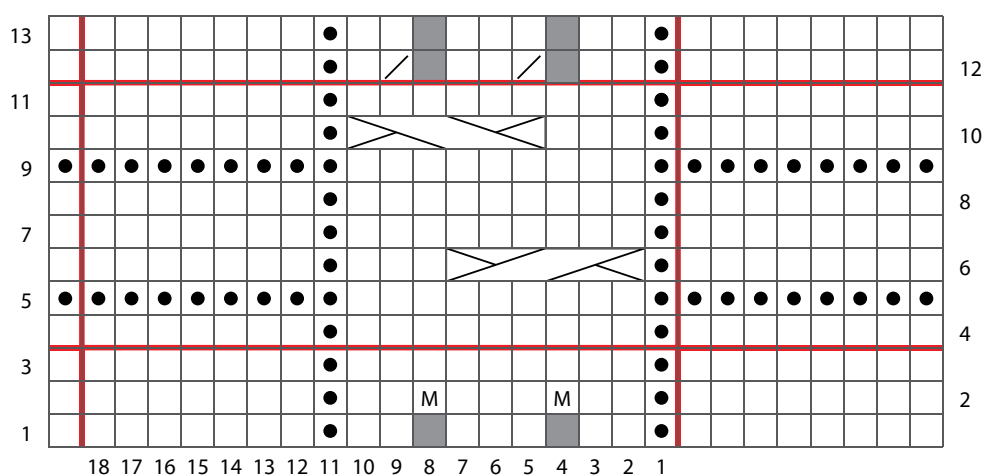
Work Rows 4–11 for pattern 10 times or until piece measures just short of 12" / 30 cm.

Row 12: Row 4: K8, * p1, [k2, k2tog] twice, k1, p1, k7; rep from * twice more, k1. 57 sts.

Row 13: P8, * k1, p7; rep from * 4 more times, p8.

Bind off.

BLOCK #9 CHART



KEY TO CHART

□ knit on RS; purl on WS

● purl on RS; knit on WS

■ placeholder—no stitch

M M1

3/3 RC: sl 3 to cn and hold to BACK, k3, k3 from

3/3 LC: sl 3 to cn and hold to FRONT, k3, k3

□ k2tog

□ pattern repeat

CHART NOTES

Work from right to left on RS rows and from left to right on WS rows.

STANDARD ABBREVIATIONS & TERMS

cn: cable needle

k: knit

k2tog: knit 2 stitches together

M1: Make 1—Pick up horizontal strand between stitch just worked and next stitch from front to back, place on left hand needle, knit this stitch through the back (1 stitch inc'd).

M1L: Make 1 Left—Pick up horizontal strand between stitch just worked and next stitch from front to back, place on left hand needle, knit this stitch through the back (1 stitch inc'd).

M1R: Make 1 Right—Pick up horizontal strand between stitch just worked and next stitch from back to front, place on left hand needle, knit this stitch through the front (1 stitch inc'd).

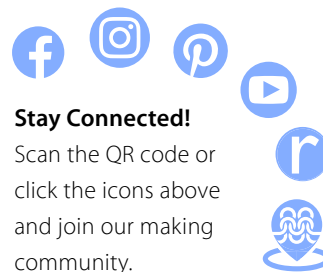
p: purl

rep: repeat

RS: right side

SSK: Slip 2 stitches knitwise, insert point of left-hand needle through fronts of these 2 stitches and knit 2 together.

WS: wrong side



Stay Connected!

Scan the QR code or click the icons above and join our making community.



Share your project!

#berrocoyarn

#VintageMKAL25