



FINISHED MEASUREMENTS

Completed Blanket: Approximately 52" x 64" /
132 cm x 163 cm

Each Block: Approximately 12" / 30.5 cm square

YARN

BERROCO VINTAGE (100 g): 6 hanks of C1, 4 hanks of C2,
3 hanks each of C3 and C4, and 2 hanks of C5.

Sample colors shown: #5101 Mochi (C1), #5172 Calico
(C2), #51198 Acai (C3), #5105 Oats (C4), #51184 Twilight
(C5)

NEEDLES

See individual block patterns for needle sizes; most
blocks can be worked on straight or any length circular
needles, sizes 7 / 4.5 mm (smaller needle) and 8 / 5 mm
(larger needle) *or sizes to obtain gauge for each block; see
below for general gauge guideline.*

A few blocks are made in the round, and require double-
pointed needles (dpns), or preferred needles for working
small circumferences.

Edgings will require a long circular needle (smaller size).

NOTIONS

Stitch markers, tapestry needle, cable needle (cn)

GAUGE

Each block has its own gauge. However, to determine
which sizes to use for your smaller and larger size
needles, use the ball band gauges for Vintage:

Gauge #1: 20 sts and 27 rows = 4" / 10 cm in St st using
smaller needle

Gauge #2: 18 sts and 24 rows = 4" / 10 cm in St st using
larger needle

*Gauge is measured after blocking. To save time and ensure
accurate measurements, take time to check gauge.*

NOTE

Minor variations in block size—within about 1" / 2.5 cm
in either direction—are okay. Once the blocks are all
sewn together, these differences won't be noticeable.

BLOCKS BY MONTH/COLORS USED

Month	Skill/Type	Color(s)
January	Texture #1	C1
January	Texture #2	C4
February	Striped (6)	All colors
March	Texture #3	C5
March	Intarsia	C2, C3, C1
April	Lace #1	C5
April	Lace #2	C2
May	Cable #1	C1
May	Cable #2	C5
June	Cable #3	C2
June	Mosaic	C2, C3
July	Cable #4	C1
August	Stranded #1	C4, C3, C5
September	Stranded #2	C1, C2, C4
October	Cable/Lace	C4
November	Seaming	
December	Border & Finishing	C1, C3

Berroco Vintage®

Find this Yarn 

BLOCK #10–Cable

Designed by Brenda York / Skill level: Intermediate



NEEDLES

Knitting needles, size 7 / 4.5 mm (smaller needles) *or size to obtain gauge*

NOTIONS

Cable needle (cn)

GAUGE

27 sts and 29 rows = 4" / 10 cm in Pattern St using smaller needles

SKILLS USED

Cast on, knit stitch, purl stitch, working cables, binding off.
Optional: reading charts.

SPECIAL ABBREVIATIONS

2/2 RC: Sl 2 sts to cn and hold in BACK, k2, k2 from cn

2/2 LC: Sl 2 sts to cn and hold in FRONT, k2, k2 from cn

2/2 RPC: Sl 2 st to cn and hold in BACK, k2, p2 from cn

2/2 LPC: Sl 2 sts to cn and hold in FRONT, p2, k2 from cn

BLOCK #10 INSTRUCTIONS

Note: Pattern may be worked by using directions below or by following chart.

Using C2, cast on 82 sts.

Row 1 (WS): K2, [p4, k2] twice, * p2, k4, p4, k4, p2, k2, p2, [k2, p4] twice, k2; rep from * once more.

Row 2 (RS): * P2, 2/2 RC, p2, 2/2 LC, p2, k2, p2, 2/2 LPC, p2, 2/2 RC, p4, k2; rep from * once more, p2, 2/2 RC, p2, 2/2 LC, p2.

Row 3: K2, [p4, k2] twice, * p2, k4, p4, k2, p2, k4, p2, k2, [p4, k2] twice; rep from * once more.

Row 4: * P2, [k4, p2] twice, k2, p4, k2, 2/2 RPC, 2/2 LPC, p2, k2; rep from * once more, p2, [k4, p2] twice.

Row 5: K2, [p4, k2] twice, * p2, k2, p2, k4, p4, k4, p2, k2, [p4, k2] twice; rep from * once more.

Row 6: * P2, 2/2 RC, p2, 2/2 LC, p2, k2, p4, 2/2 LC, p4, k2, p2, k2; rep from * once more, p2, 2/2 RC, p2, 2/2 LC, p2.

Row 7: K2, [p4, k2] twice, * p2, k2, p2, k4, p4, k4, p2, k2, [p4, k2] twice; rep from * once more.

Row 8: * P2, [k4, p2] twice, k2, p4, k4, p4, k2, p2, k2; rep from * once more, p2, [k4, p2] twice.

Row 9: Rep Row 7.

Row 10: Rep Row 6.

Row 11: Rep Row 7.

Row 12: Rep Row 8.

Row 13: Rep Row 7.

Row 14: * P2, 2/2 RC, p2, 2/2 LC, p2, k2, p4, 2/2 LC, p2, 2/2 RPC, p2, k2; rep from * once more, p2, 2/2 RC, p2, 2/2 LC, p2.

Row 15: K2, [p4, k2] twice, * p2, k4, p2, k2, p4, k4, p2, k2, [p4, k2] twice; rep from * once more.

Row 16: * P2, [k4, p2] twice, k2, p2, 2/2 RPC, 2/2 LPC, k2, p4, k2; rep from * once more, p2, [k4, p2] twice.

Row 17: K2, [p4, k2] twice, * p2, k4, p4, k4, [p2, k2] twice, [p4, k2] twice; rep from * once more.

Row 18: * P2, 2/2 RC, p2, 2/2 LC, [p2, k2] twice, p4, 2/2 RC, p4, k2; rep from * once more, p2, 2/2 RC, p2, 2/2 LC, p2.

Row 19: Rep Row 17.

Row 20: * P2, [k4, p2] twice, k2, p2, k2, p4, k4, p4, k2; rep from * once more, p2, [k4, p2] twice.

Row 21: Rep Row 17.

Row 22: Rep Row 18.

Row 23: Rep Row 17.

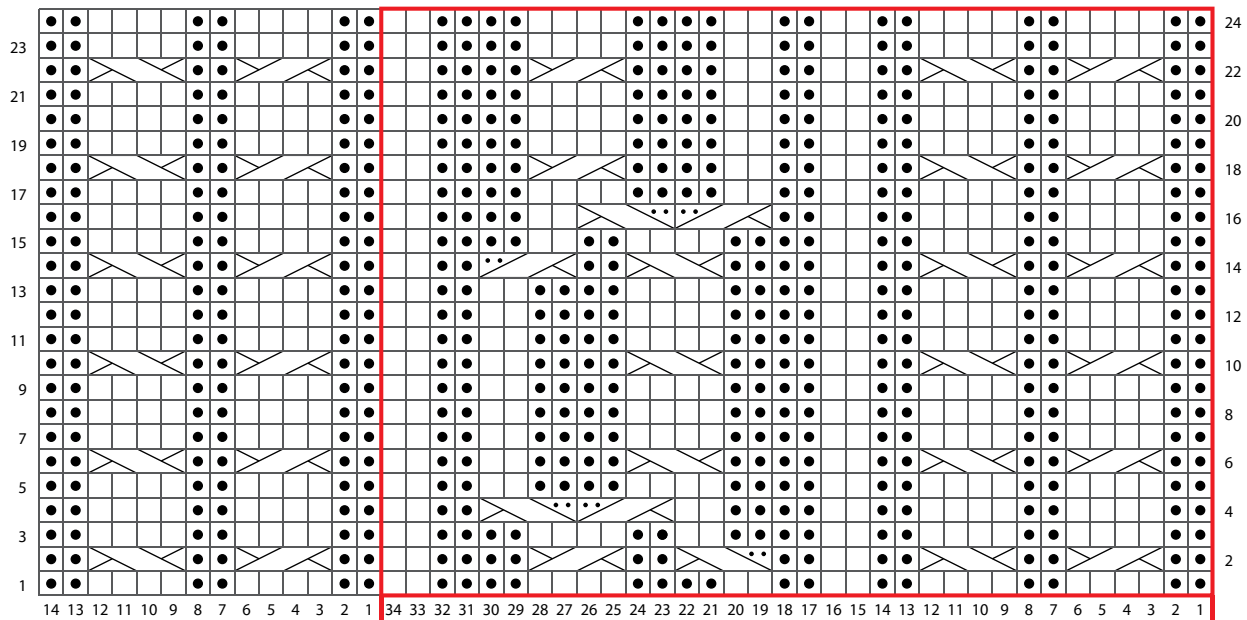
Row 24: Rep Row 20.

Repeat Rows 1–24 until piece measures 12" / 30.5 cm from cast-on, end after completing a WS row. Bind off.

FINISHING

Weave in all ends and block as desired.

BLOCK 10 CABLE CHART



KEY TO CHART

□ knit on RS; purl on WS

● purl on RS; knit on WS

⌞ 2/2 RC: sl 2 to cn and hold to BACK, k2, k2 from cn

⌞ 2/2 LC: sl 2 to cn and hold to FRONT, k2, k2 from cn

⌞ 2/2 LPC: sl 2 to cn and hold to FRONT, p2, k2 from cn

⌞ 2/2 RPC: sl 2 to cn and hold to BACK, k2, p2 from cn

□ pattern repeat

CHART NOTES

Work from right to left on RS rows and from left to right on WS rows.

Learn how to work cables!

Click here or scan the QR code to find a video breaking down basic cable crosses to help you master this skill!



BLOCK #11–Mosaic

Designed by Emily Sproul / Skill level: Intermediate



NEEDLES

Knitting needles, size 7 / 4.5 mm (smaller needles) *or size to obtain gauge*

GAUGE

21 sts and 30 rows = 4" / 10 cm in Mosaic Pattern

SKILLS USED

Casting on, knit stitch, slip stitch, binding off
Optional: reading charts.

Note: Slip stitches purlwise. Block may be worked either by using directions below or by following either Chart 1 or Chart 2. The two charts both represent the same pattern, but they present two different ways of depicting mosaic knitting. Use whichever one you prefer, or try them both!

BLOCK #11 INSTRUCTIONS

With C3, cast on 63 sts.

Row 1 (RS): With C3, knit.

Row 2 (WS): With C3, knit.

Row 3: With C2, k1, * sl 1 wyib, k1; rep from * across.

Row 4: With C2, k1, * sl 1 wyif, k1; rep from * across.

Row 5: With C3, k1, * k5, sl 1 wyib, k4; rep from * 4 times more, k5, sl 1 wyib, k6.

Row 6: With C3, k6, sl 1 wyif, k5, * k4, sl 1 wyif, k5; rep from * 4 times more, k1.

Row 7: With C2, k1, * [k1, sl 1 wyib] twice, k3, sl 1 wyib, k1, sl 1 wyib; rep from * 4 times more, [k1, sl 1 wyib] twice, k3, sl 1 wyib, k1, sl 1 wyib, k2.

Row 8: With C2, k2, sl 1 wyif, k1, sl 1 wyif, k3, [sl 1 wyif, k1] twice, * sl 1 wyif, k1, sl 1 wyif, k3, [sl 1 wyif, k1] twice; rep from * 4 times more, k1.

Row 9: With C3, k1, * k4, sl 1 wyib, k1, sl 1 wyib, k3; rep from * 4 times more, k4, sl 1 wyib, k1, sl 1 wyib, k5.

Learn Mosaic Knitting

Click here or scan the QR code to find a video explaining how to work mosaic stitch patterns and their different chart types!



Row 10: With C3, k5, sl 1 wyif, k1, sl 1 wyif, k4, * k3, sl 1 wyif, k1, sl 1 wyif, k4; rep from * 4 times more, k1.

Row 11: With C2, k1, * sl 1 wyib, k1, sl 1 wyib, k5, sl 1 wyib, k1; rep from * 4 times more, sl 1 wyib, k1, sl 1 wyib, k5, [sl 1 wyib, k1] twice.

Row 12: With C2, [k1, sl 1 wyif] twice, k5, sl 1 wyif, k1, sl 1 wyif, * k1, sl 1 wyif, k5, sl 1 wyif, k1, sl 1 wyif; rep from * 4 times more, k1.

Row 13: With C3, k1, * k3, sl 1 wyib, [k1, sl 1 wyib] twice, k2; rep from * 4 times more, k3, sl 1 wyib, [k1, sl 1 wyib] twice, k4.

Row 14: With C3, k4, sl 1 wyif, [k1, sl 1 wyif] twice, k3, * k2, sl 1 wyif, [k1, sl 1 wyif] twice, k3; rep from * 4 times more, k1.

Row 15: With C2, k1, * k1, sl 1 wyib, k7, sl 1 wyib; rep from * 4 times more, k1, sl 1 wyib, k7, sl 1 wyib, k2.

Row 16: With C2, k2, sl 1 wyif, k7, sl 1 wyif, k1, * sl 1 wyif, k7, sl 1 wyif, k1; rep from * 4 times more, k1.

Row 17: With C3, k1, * k2, [sl 1 wyib, k1] 4 times; rep from * 4 times more, k2, [sl 1 wyib, k1] 4 times, k2.

Row 18: With C3, k3, [sl 1 wyif, k1] 4 times, k1, * k1, [sl 1 wyif, k1] 4 times, k1; rep from * 4 times more, k1.

Row 19: With C2, k1, * sl 1 wyib, k9; rep from * 4 times more, sl 1 wyib, k9, sl 1 wyib, k1.

Row 20: With C2, k1, sl 1 wyif, k9, sl 1 wyif, * k9, sl 1 wyif; rep from * 4 times more, k1.

Row 21: With C3, k1, * [k1, sl 1 wyib] 5 times; rep from * 4 times more, [k1, sl 1 wyib] 5 times, k2.

Row 22: With C3, k2, [sl 1 wyif, k1] 5 times, * [sl 1 wyif, k1] 5 times; rep from * 4 times more, k1.

Rows 23 and 24: With C2, knit.

Row 25: Rep Row 21.

Row 26: Rep Row 22.

Row 27: Rep Row 19.

Row 28: Rep Row 20.

Row 29: Rep Row 17.

Row 30: Rep Row 18.

Row 31: Rep Row 15.

Row 32: Rep Row 16.

Row 33: Rep Row 13.

Row 34: Rep Row 14.

Row 35: Rep Row 11.

Row 36: Rep Row 12.

Row 37: Rep Row 9.

Row 38: Rep Row 10.

Row 39: Rep Row 7.

Row 40: Rep Row 8.

Row 41: Rep Row 5.

Row 42: Rep Row 6.

Row 43: Rep Row 3.

Row 44: Rep Row 4.

Rep Rows 1–44 twice more, then work Rows 1 and 2.
Bind off.

FINISHING

Weave in all ends and block as desired.

STANDARD ABBREVIATIONS & TERMS

cn: cable needle

k: knit

k2tog: knit 2 stitches together

p: purl

rep: repeat

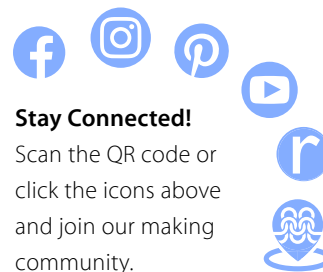
RS: right side

sl: slip

WS: wrong side

wyib: with yarn in back

wyif: with yarn in front



Stay Connected!

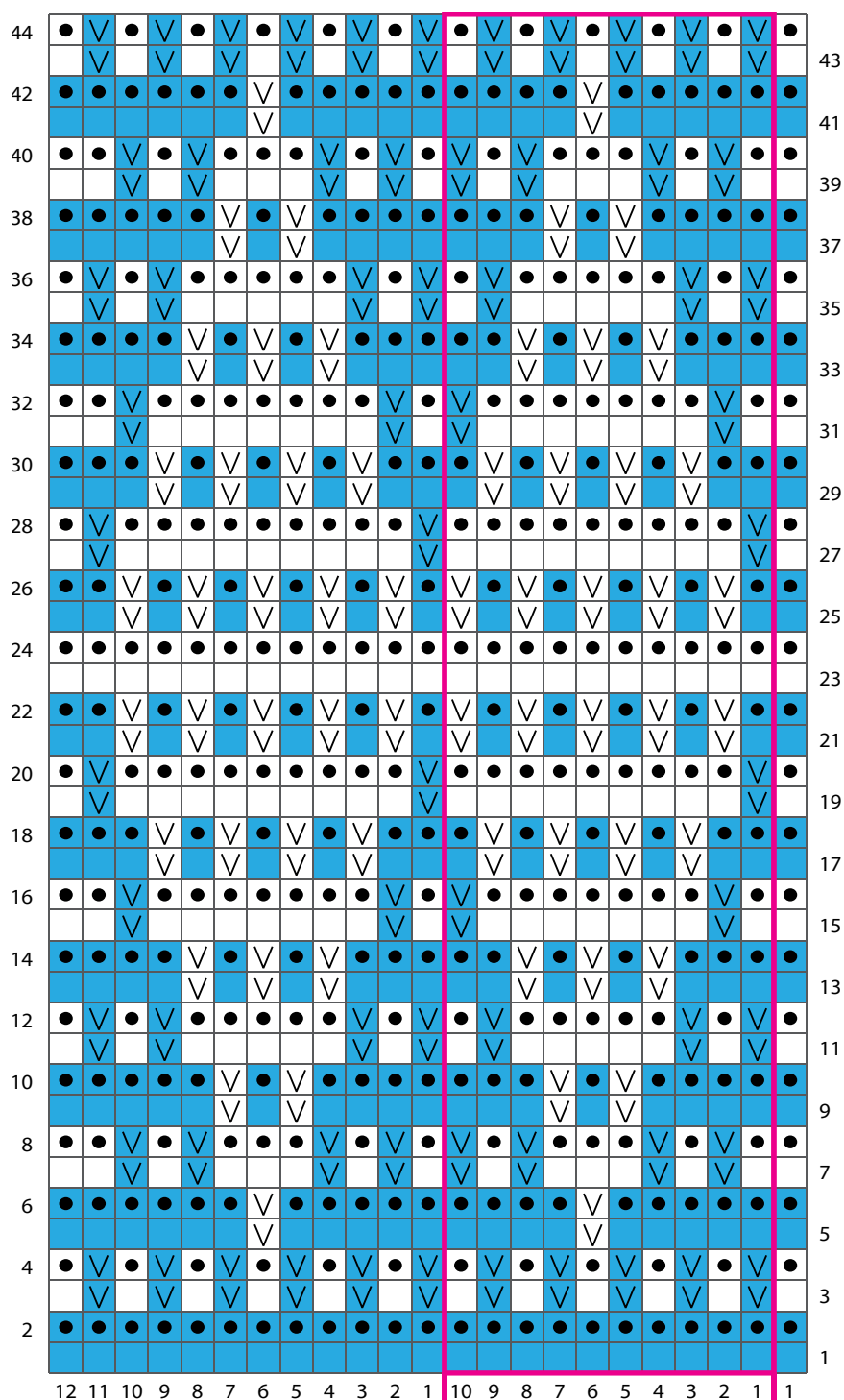
Scan the QR code or click the icons above and join our making community.



Share your project!

#berrocoyarn
#VintageMKAL25

BLOCK #11 CHART 1



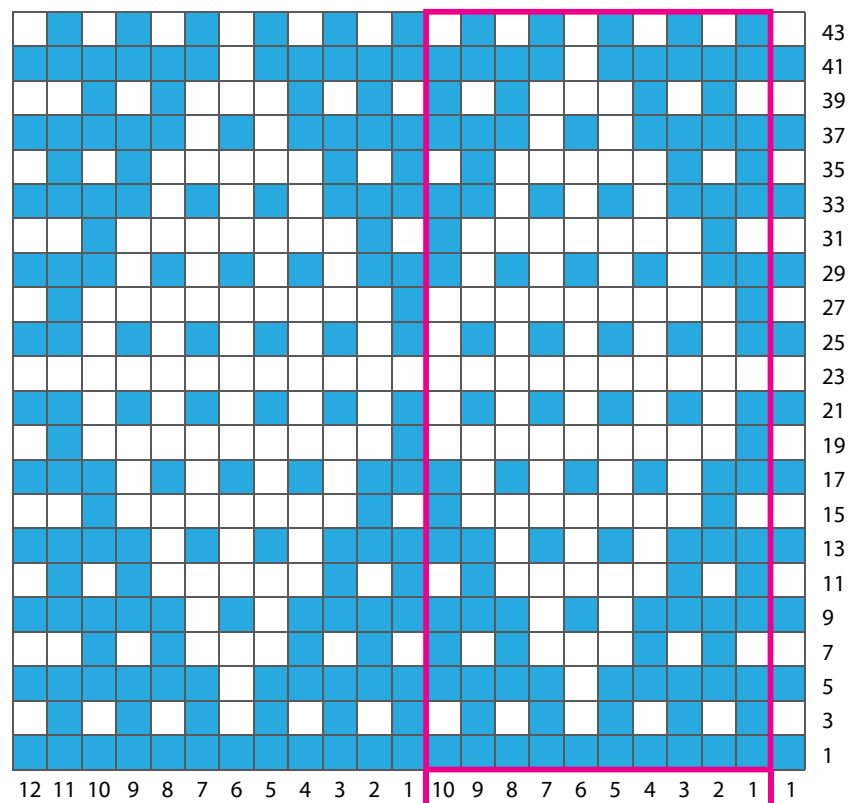
KEY TO CHART 1

- C3
- C2
- purl on RS; knit on WS
- RS: slip as if to purl, with yarn in back
WS: slip as if to purl, with yarn in front
- pattern repeat

CHART 1 NOTES

Work from right to left on RS rows
and from left to right on WS rows.

BLOCK #11 CHART 2



KEY TO CHART 2

- C3
- C2
- pattern repeat

CHART 2 NOTES

Each row of chart represents both RS and WS row.

First stitch of row indicates which color to work with for the row.

On RS rows, knit the sts that show the color that you're working with for that row, and slip wyib the sts that show the color you're not working with for that row.

On WS rows, knit the sts that are in the color you're working with, and slip wyif the sts that are in the color you're not working with for that row.